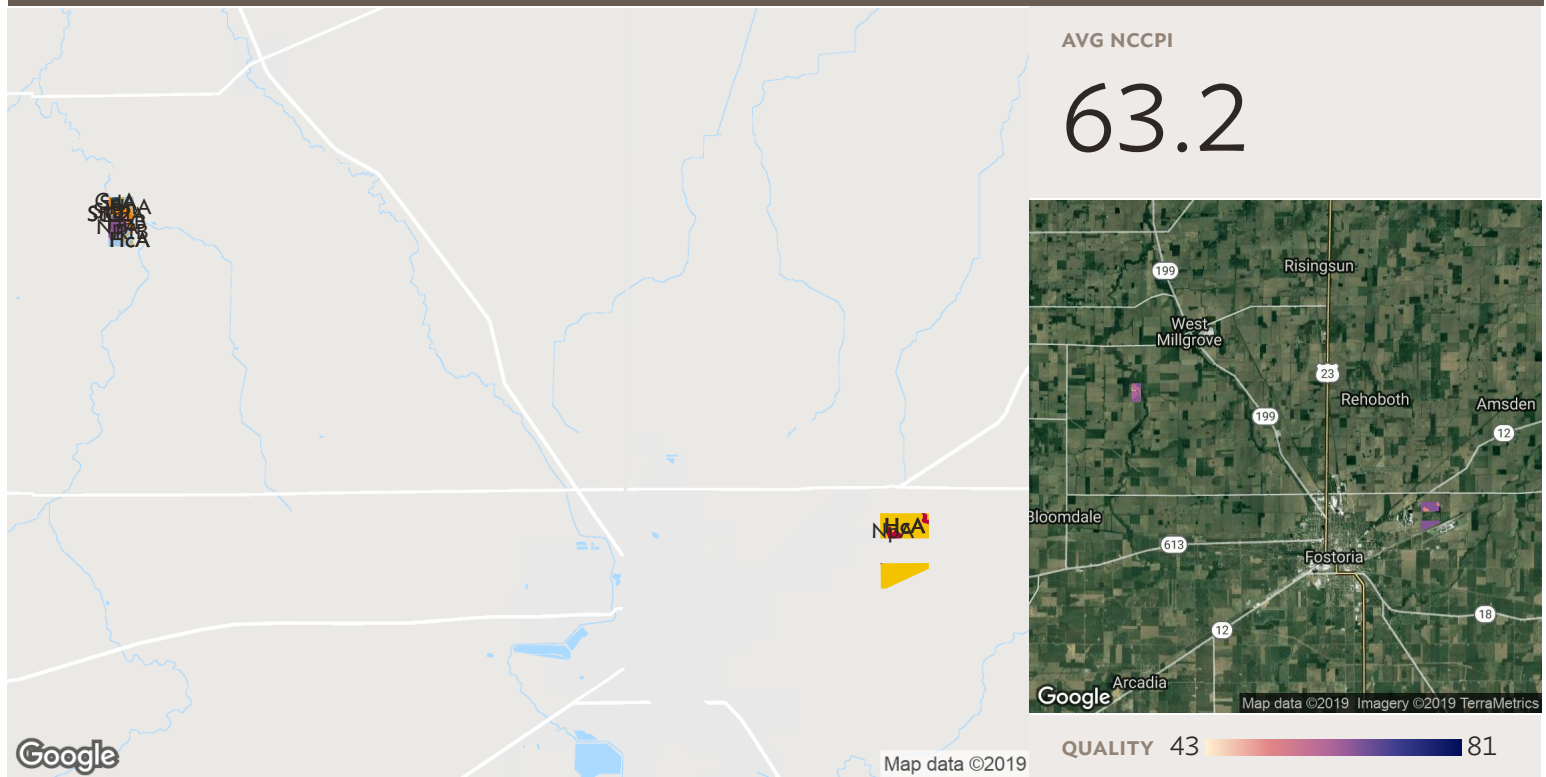


3 fields, 210 acres in Seneca and Wood Counties, OH



All fields

Source: NRCS Soil Survey

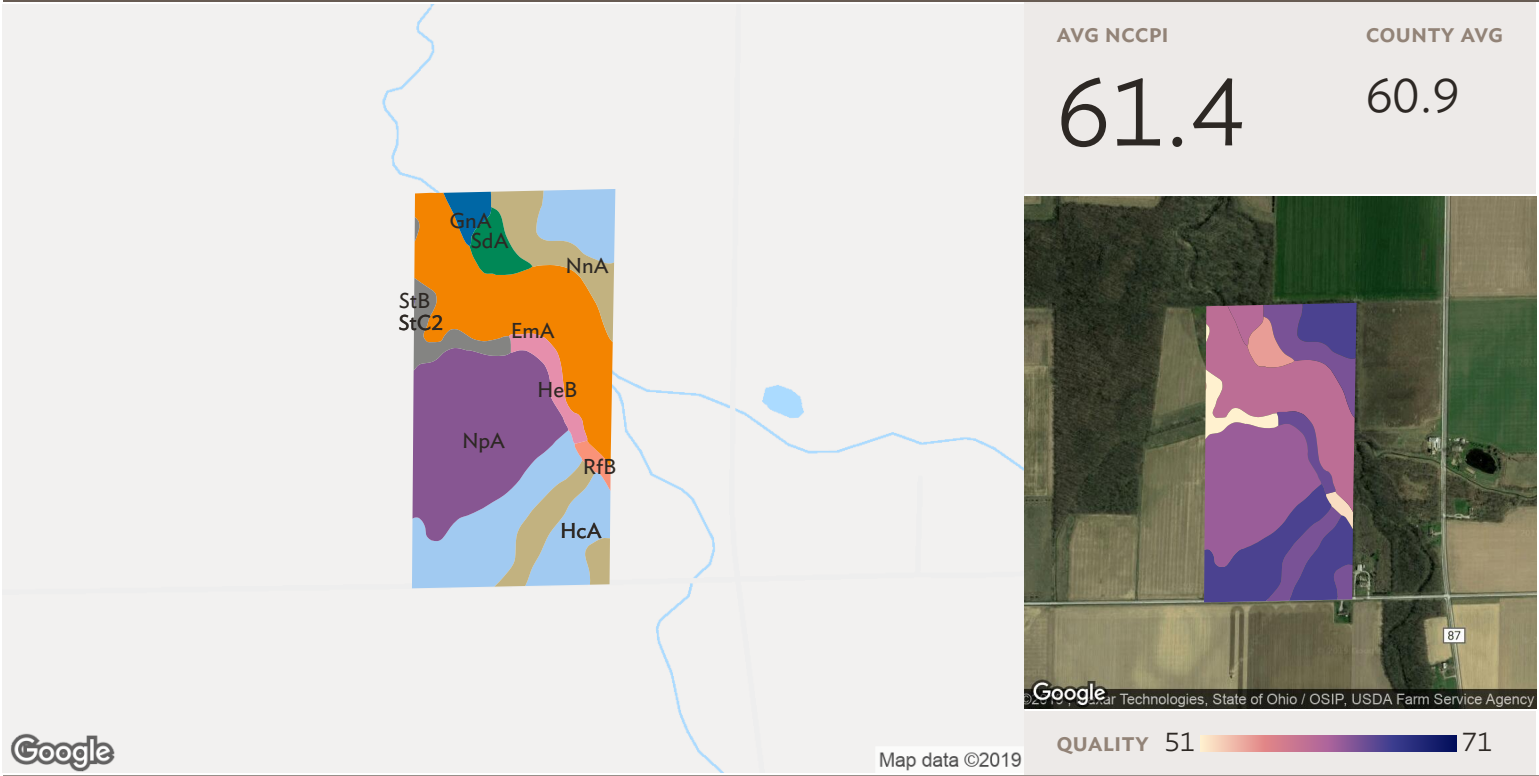
210 ac

SOIL CODE	SOIL DESCRIPTION	ACRES	PERCENTAGE OF FIELD	SOIL CLASS	NCCPI
HcA	Hoytville silty clay loam, 0 to 1 percent slopes	119.42	56.9%	2	65.3
NpA	Nappanee silty clay loam, 0 to 2 percent slopes	21.23	10.1%	3	61.8
EmA	Eel silt loam, 0 to 2 percent slopes, frequently flooded	19.72	9.4%	2	59.5
HcA	Hoytville silty clay loam, 0 to 1 percent slopes	19.25	9.2%	2	65.3
NpA	Nappanee silt loam, 0 to 2 percent slopes	11.44	5.4%	3	52.7
NnA	Nappanee loam, 0 to 2 percent slopes	9.45	4.5%	3	63.3
StC2	St. Clair loam, 6 to 12 percent slopes, eroded	2.89	1.4%	4	46.2
SdA	Seward and Ottokee, till substratum, loamy fine sands, 0 to 2 percent slopes	2.29	1.1%	2	54.9
HeB	Haskins and Digby, till substratum, fine sandy loams, 2 to 6 percent slopes	2.17	1.0%	2	64.0

3 fields, 210 acres in Seneca and Wood Counties, OH

■	GnA	Genesee silt loam, 0 to 2 percent slopes, frequently flooded	1.49	0.7%	2	60.1
■	RfB	Rimer and Tedrow, till substratum, loamy fine sands, 2 to 6 percent slopes	0.63	0.3%	2	51.9
■	StB	St. Clair loam, 2 to 6 percent slopes	0.03	0.0%	3	55.9
			210.00			63.2

3 fields, 210 acres in Seneca and Wood Counties, OH



Field 1

79 ac

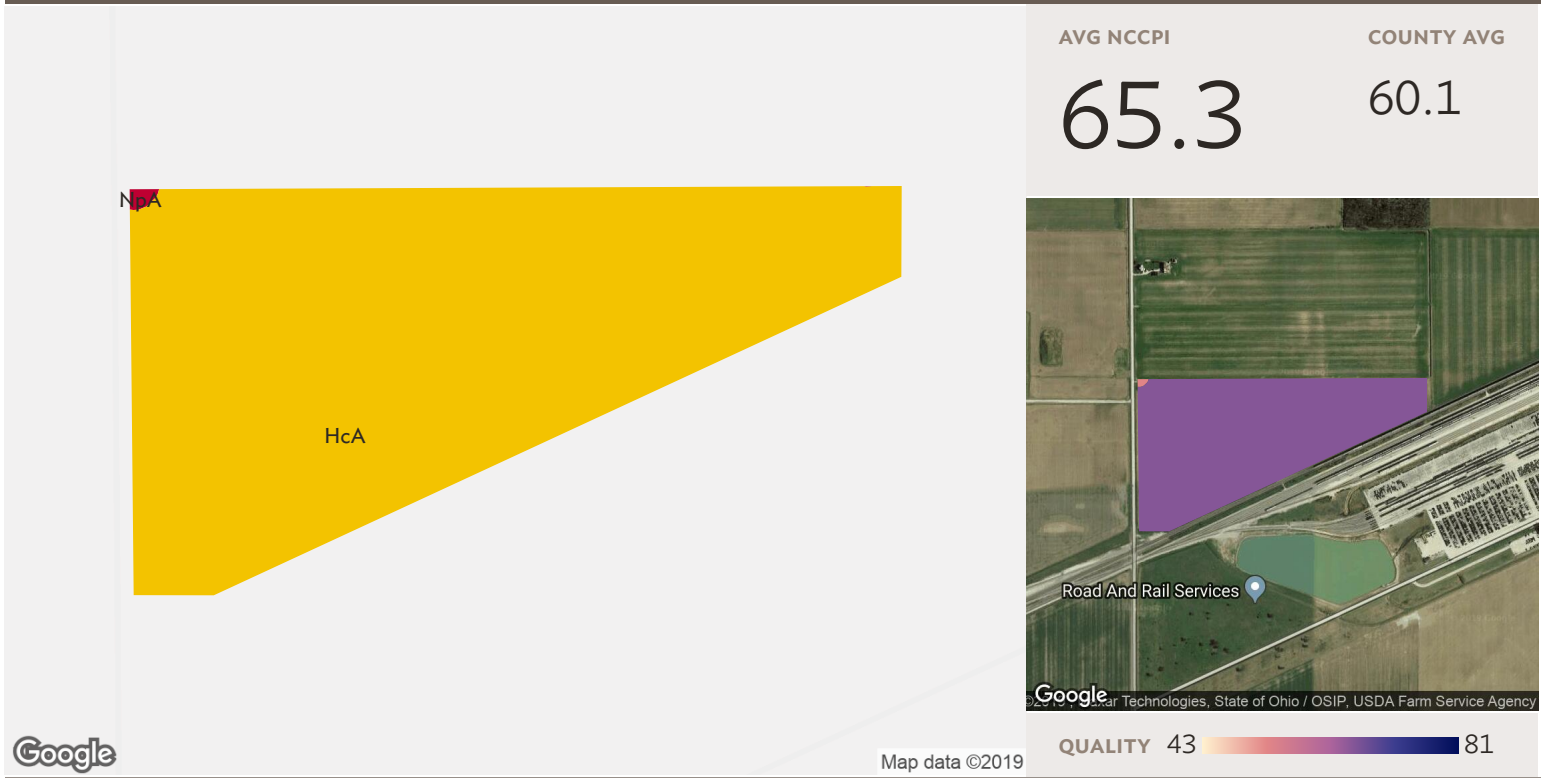
Source: NRCS Soil Survey

SOIL CODE	SOIL DESCRIPTION	ACRES	PERCENTAGE OF FIELD	SOIL CLASS	NCCPI
NpA	Nappanee silty clay loam, 0 to 2 percent slopes	21.23	26.8%	3	61.8
EmA	Eel silt loam, 0 to 2 percent slopes, frequently flooded	19.72	24.9%	2	59.5
HcA	Hoytville silty clay loam, 0 to 1 percent slopes	19.25	24.3%	2	65.3
NnA	Nappanee loam, 0 to 2 percent slopes	9.45	11.9%	3	63.3
StC2	St. Clair loam, 6 to 12 percent slopes, eroded	2.89	3.7%	4	46.2
SdA	Seward and Ottokee, till substratum, loamy fine sands, 0 to 2 percent slopes	2.29	2.9%	2	54.9
HeB	Haskins and Digby, till substratum, fine sandy loams, 2 to 6 percent slopes	2.17	2.7%	2	64.0
GnA	Genesee silt loam, 0 to 2 percent slopes, frequently flooded	1.49	1.9%	2	60.1

3 fields, 210 acres in Seneca and Wood Counties, OH

■	RfB	Rimer and Tedrow, till substratum, loamy fine sands, 2 to 6 percent slopes	0.63	0.8%	2	51.9
■	StB	St. Clair loam, 2 to 6 percent slopes	0.03	0.0%	3	55.9
			79.14			61.4

3 fields, 210 acres in Seneca and Wood Counties, OH



Field 2

Source: NRCS Soil Survey

52 ac

SOIL CODE	SOIL DESCRIPTION	ACRES	PERCENTAGE OF FIELD	SOIL CLASS	NCCPI
■ HcA	Hoytville silty clay loam, 0 to 1 percent slopes	51.40	99.6%	2	65.3
■ NpA	Nappanee silt loam, 0 to 2 percent slopes	0.20	0.4%	3	52.7
51.60					65.3

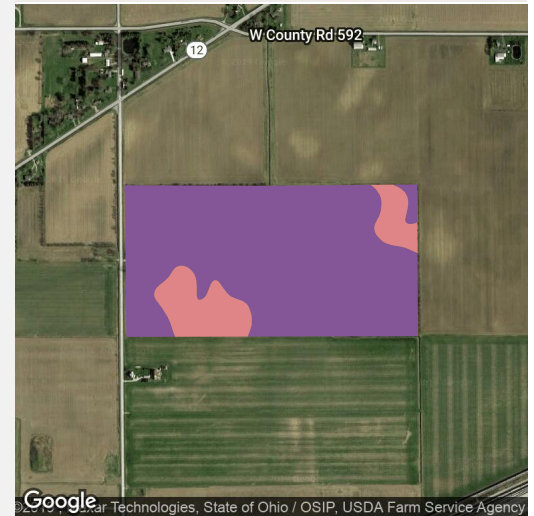
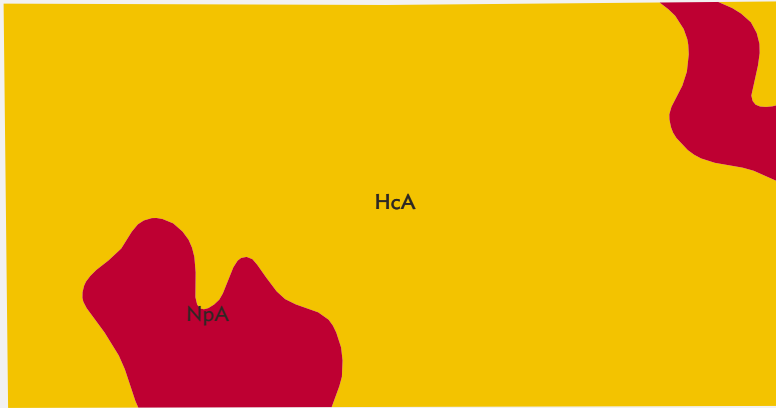
3 fields, 210 acres in Seneca and Wood Counties, OH

AVG NCCPI

63.5

COUNTY AVG

60.1



Google

Map data ©2019

QUALITY 43 81

Source: NRCS Soil Survey

Field 3

79 ac



SOIL CODE	SOIL DESCRIPTION	ACRES	PERCENTAGE OF FIELD	SOIL CLASS	NCCPI
■ HcA	Hoytville silty clay loam, 0 to 1 percent slopes	68.03	85.8%	2	65.3
■ NpA	Nappanee silt loam, 0 to 2 percent slopes	11.24	14.2%	3	52.7
					79.27
					63.5

3 fields, 210 acres in Seneca and Wood Counties, OH

Wood County, OH

FIELD	ACRES	LOCATION	OWNER (LAST UPDATED)	OWNER ADDRESS
1 	79.14	3N 12E - 7, 8, 17, 18 APN: N52312180000001000	KIRKVIEW ENTERPRISES LLC (05/15/2018)	1714 PEBBLESTONE DR, FINDLAY, OH 45840

Seneca County, OH

2 	51.60	3N 13E - 33, 34 APN: G25000406000000	KIRKVIEW ENTERPRISES LLC (02/28/2017)	1714 PEBBLESTONE DR, FINDLAY, OH 45840
3 	79.27	3N 13E - 33, 34 APN: G25000406040000	KIRKVIEW ENTERPRISES LLC (02/28/2017)	1714 PEBBLESTONE DR, FINDLAY, OH 45840
210.00				

3 fields, 210 acres in Seneca and Wood Counties, OH

