

Farmland Auction

39.181+/- ACRES

Pollock Rd., Grand Rapids, OH

Great Square all Tillable Farm

Wednesday November 9, 2022, 11AM

Auction held at
Whalen Auction Building
8020 Manore Rd, Neapolis OH
(GPS Grand Rapids OH 43522)



John Whalen

418.875.6317

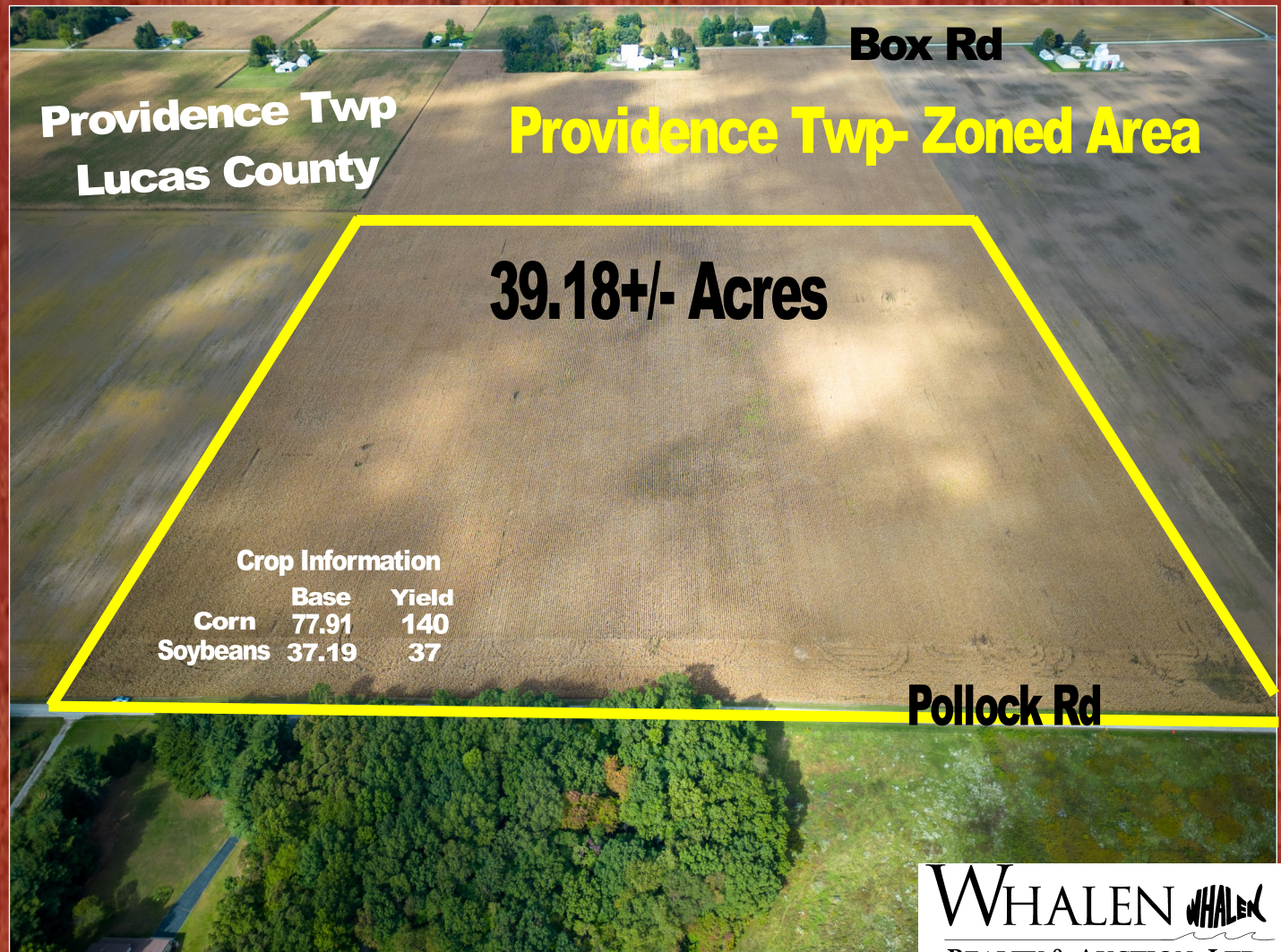


Jason Whalen

419.337.7653

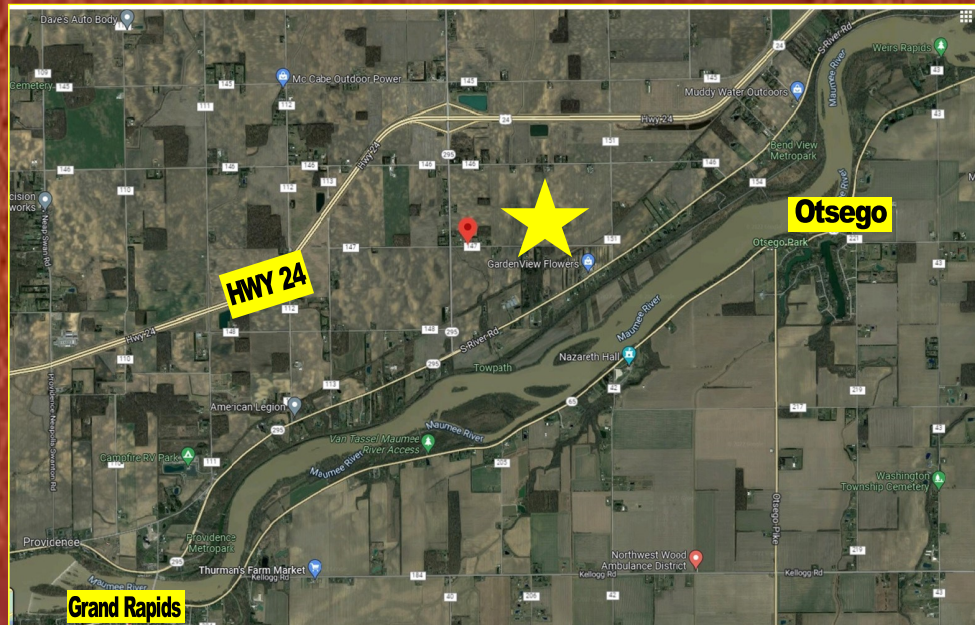


Michael Murry



WHALEN WHALEN
REALTY & AUCTION, LTD.

39.181+/- ACRES - FARMLAND AUCTION



Terms: \$7,000.00 down in certified funds (nonrefundable) w/balance at closing. Closing held on or before 40 days. Possession granted after the removal of fall crops with receipt of down payment for farming purposes only. Seller to retain the 2022 farm rent. Have finances ready, selling with immediate confirmation "as is where is." No Buyer's Premium. All information was derived from sources believed to be correct but not guaranteed. Dimensions are approximate. Buyers need to rely entirely on their own judgement and inspections of property records. Announcements made the day of the auction take precedence over printed materials.

Tax parcel 51-08378

Year Taxes \$743.76

Lucas County
Providence Township
Otsego Schools

Owner: Michael Dawe &
Michelle Drummond Co-Trustees



Scan For More Info

WHALEN WHALEN
REALTY & AUCTION, LTD.

WHALEN WHALEN
REALTY & AUCTION, LTD.
PO Box 550
Neapolis, OH 43547

Wednesday November 9, 2022 11AM

