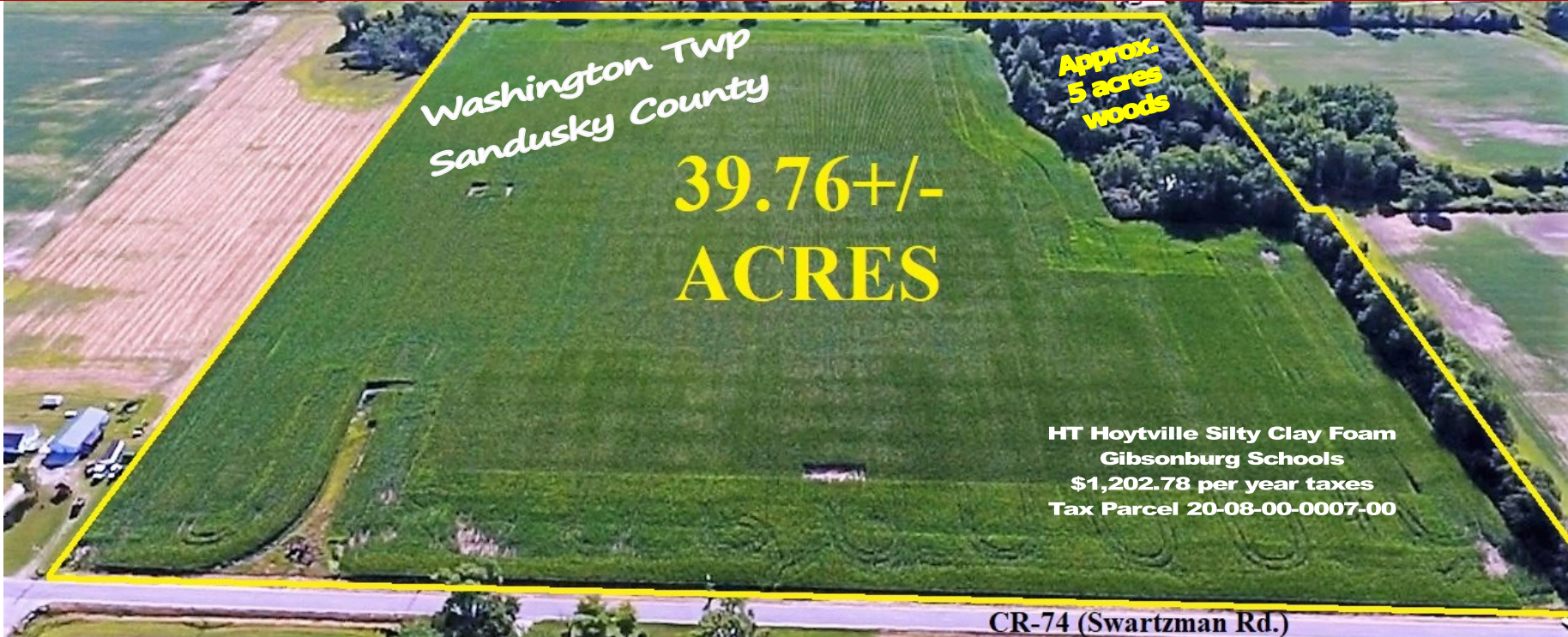


Real Estate Farmland Auction

County Road 74 (Swartzman Rd.) Dead end at County Road 95



Wheat 0.86 71
Corn 13.38 154
Soybean 14.53 44



Scan to
Learn More

Auction held at Gibsonburg American Legion Post 17
300 S. Main St., Gibsonburg, OH 43431



Real Estate Farmland Auction

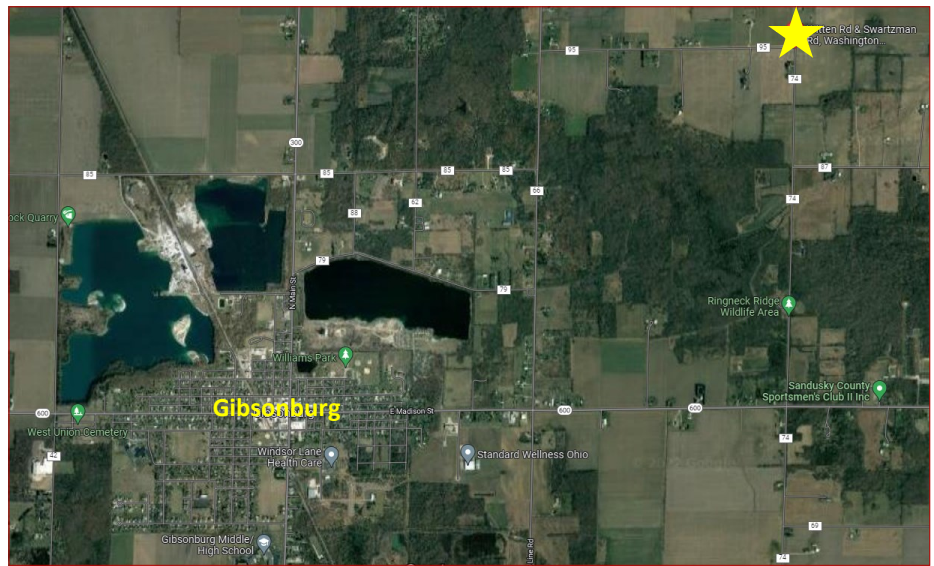
Wednesday, September 7, 2022 @ 10:00a.m.

WHALEN
REALTY & AUCTION, LTD.
PO Box 550
Neapolis, OH 43547

39.76+/- Acres!
Great productive
farm that is centrally
located between Rt
20 and Rt 600.

Washington Twp
Sandusky Co.

whalenauction.com



Owners: John Bondelier, Jerre Murray
& Cynthia Burnham

Terms: \$7,000.00 down in certified funds w/balance at closing. Closing held on or before December 1, 2022. Possession given after fall crops are removed. Have finances ready, selling with immediate confirmation "as is where is". No Buyer's Premium. All information was derived from sources believed to be correct but not guaranteed. Dimensions are approximate. Buyers need to rely entirely on their own judgement and inspections of property records. Announcements made the day of the auction take precedence over printed materials.



John Whalen 419-875-6317
Jason Whalen 419-265-2019
Mike Murry 419-262-6943

AUCTIONEERS—John & Jason Whalen, Michael Murry - Office 419-875-6317, 419-337-7653