

# Construction Equipment Auction- Retirement of Schoen Inc.

## Saturday December 11, 10:00am 3924 South Ave., Toledo OH 43615

Selling 1st @ 12noon



100. 2021 LeeBoy 8520B Track Asphalt Paver Like New! Only 600 hrs, 1 owner, 15' wide capacity, Kubota 106 hp, rubber track, 9 ton hopper, screed extension vibration. This Paver selling with seller confirmation.



106. 2014 Yanmar SV100-2B excavator, 1 Owner. Rubber track, back fill blade, C.A.H. 2700 hrs, quick coupler, auxiliary hydraulics.



107. 2004 Deere 200C LC Excavator, w/auxiliary hydraulics Geth quick coupler, 31 1/2" pad, 9570 hrs. Operates.



109. 1998 Fiat-Allis FG 65C Motor Grader, turbo, R.O.P.S. 11'10" cutting width, 3500 hours, 1 owner, 15-19.5 tires, hour meter unreadable.



101. 2020 Hamm HD 14i Compactor Roller 1 Owner! Vibratory 54" wide, 35" diameter smooth drum, only 700 hrs.



108. 2017 Mustang 2100RT track loader, 1600 hrs C.A.H., high flow, Power-A-Tach, joystick control.



103. 2013 Hamm HD 14 Compactor Roller, 3235 hrs, 54" wide; tandem vibratory smooth drum roller.



102. 2016 Hamm HD 10C Compactor Roller. 39" wide, 24" diameter; offset roller, smooth drum tandem vibratory roller, 1900 hours.



110. 2006 Deere 700J XLT crawler dozer. 6 way blade, 7254 hrs, 1 owner, C.A.H. 22" pads, 10' cutting width, G.P.S., poles will be removed. 1 Owner.



104. 2007 Kenworth T800 18' Quad Axle Dump Truck, 80,000 GVW, Eaton fuller 8 speed; CAT C13 ACERT, 385/65R 22.5 fronts, 11R 24.5 rears, 18' steel bed Godwin, electric tarp opener, 270,000 miles, LED lights, aluminum alloy rims, 1 owner.



114. 2003 Deere 624J Tool Carrier, 20.5 R25 tires, 6685 hrs, 1 owner with Pemberton wheel loader pallet forks, 5' forks, fit John Deere, 30 1/2" in between centers width, 16 1/2" in between centers vertical



126. 2004 Ford F450 diesel flat bed, engine has dead cylinder, w/14'3" stake box and side lift gate, 27,342 miles on tach, 225/70R 19.5 tires.



128. 2005 Ford F-350 crew cab diesel flatbed, 2wd; 8' bed, 132,000 miles, aluminum rims, LT275 x 65R 15.



130. 2015 Case 30" Asphalt Cold Planer Skid Mount. Hydraulic adjustment, tilt & angle and side shift. Clean



105. 1996 Ingersoll Rand DD-110 Compactor Roller. 6'6" wide x 53 1/2" smooth drum, 5230 Hours, Vibratory compactor.



118. Michigan L120 wheel loader, Volvo engine, transmission is out, has front coupler, Loadrite integrated load scale, 23.5R 25 tires, serial #LV120V60504; will move slowly

**Live auction starting @ 10am with tons of unlotted construction related smalls.**  
**12noon selling Live and Online Bidding with Catalogued Equipment & Vehicles.**



124. 2008 Chevy Silverado LT 2500 HD extended cab, long bed, 6.0L gas, 2 WD, 125,000 miles.



116. 1998 Ford T-91 tandem axle dump truck, with drop axle, 425/65R 22.5 fronts, 11R 22.5 rears, 16' dump bed, hand crank tarp, Eaton Fuller 8 speed, CAT diesel. 1 Owner



122. 2011 GMC 3500 4x4 service truck, Duramax 6.6 diesel, 235/80R 17 tires, 82,000 miles, automatic Allison has Stahl 9 1/2' service body & Stahl 4000 CRX 16' telescopic boom, rear stabilizer 90 gallon fuel tank.



154. 1992 Ford F800 w/Etnyre Asphalt Distributor topser series 2000, 12' spray boom, 2000 gallon tank, propane fired burner, spray wand, 5 speed w/2 speed rear, 11R 22.5 tires, 354,000 miles.



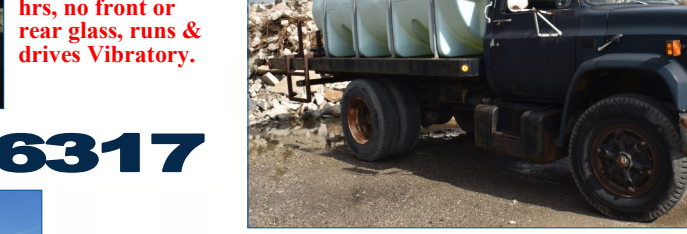
156. 1974 I.H. Loadstar 1700 water truck w/ Honda. 2 1/2" pump, V-8 gas 20" tires.



113. 1989 CAT CS-553 vibrating compactor, smooth drum, 7' wide x 60" drum, 5500 hrs, no front or rear glass, runs & drives Vibratory.



111. 1997 CAT D5C XL Series 3 Crawler Dozer, Hystat 7325 hrs w/rear ripper, 6 way blade, 20" pad. 1 Owner.



158. 1988 Chevy water truck, Big Block, gas, 2000 gallon tank, air brake, 29,860 GVW, 84,941 miles on odometer, w/Honda gas pump, 2 1/2" x 4" hook up.



140. 2016 Felling FT-15 IT-1 tandem tilt trailer. 18,000 lbs GVW, 8 lug 215/75R 17.5, 20" wide ramp, 5'11" in between



136. 2017 Felling FT-45-2LP tandem dual trailer, air brake, air flip up ramps, 235-75R 17.5 8 lug tires, rub rail & chain box, 22' + 6' beaver, 8'6" wide, 7'6" x 37" wide ramps. Used to haul LeeBoy 8520 B paver with, Hamm 14 roller.



138. 2007 Hudson 20 ton trailer 22' +6' Beaver Tail. Model HTD18A 48,640 GVW tandem dual 215/75R 17.5 tires, 8 lug, air brakes, 8'6" wide, 8'10" flip up ramps, rub rail, LED lights.



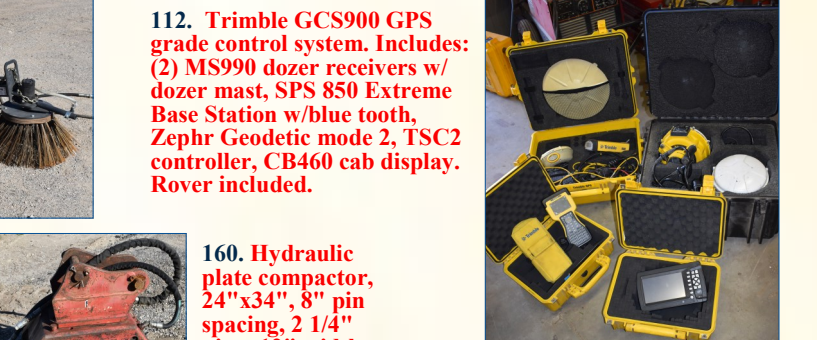
144. 2004 Haulmark 16' enclosed trailer. 7000 lb GVW, 5 lug tires, cargo door 72" door height, 6" door width.



146. 1999 20' Wells Cargo enclosed trailer. 8 lug. L235/85R 16, cargo doors, 75" tall door height, 82" width, 13,200 GVW.



132. Virnig 72 pick up broom skid mount attachment. 72" wide with hydraulic curb brush, 30 gallon water capacity, Clean!



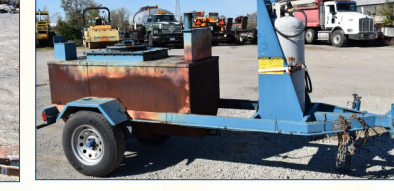
112. Trimble GCS900 GPS grade control system. Includes: (2) MS990 dozer receivers w/ dozer mast, SPS 850 Extreme Base Station w/blue tooth, Zephir Geodetic mode 2, TSC2 controller, CB460 cab display. Rover included.



142. 2003 Leland 18' tandem trailer w/4' beaver, 5' flip up ramps, LT 235/85R 16 tires, 8 lug, electric brake, 6'8" in between fenders.



148. Air Max 175 towable air compressor with 4 cylinder diesel works.



150. 2005 Marathon TRA/REM Hot Box. Towable L.P. fired. Used for direct fire hot pour sealant.



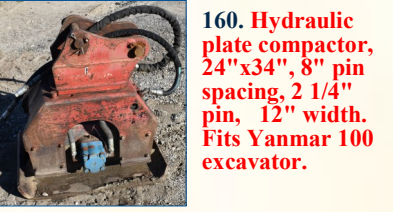
135. 2005 Solar Tech arrow board w/ control board, works.



134. Erskine skid mount broom, 7' wide, manual angle



159. Hudco excavator plate compactor, 33" x 39" plate size, 3 1/8" pine, 18 1/2" in between center, 12" spacing. Fits JD 200 Excavator



160. Hydraulic plate compactor, 24" x 34", 8" pin spacing, 2 1/4" pin, 12" width. Fits Yanmar 100 excavator.

**419-875-6317**

Online catalogue bidding starting @ 12noon

**See whalenauction.com for terms.**



# WHALEN WHALEN

## REALTY & AUCTION, LTD.

P.O. BOX 550  
NEAPOLIS, OH 43547  
whalenauction.com

### Retirement of Schoen Inc. Construction Equipment Auction



**100.** 2021 LeeBoy 8520B Track Asphalt Paver Like New! Only 600 hrs, 1 owner, 15' wide capacity, Kubota 106 hp, rubber track, 9 ton hopper, screed extension vibration. This paver selling with seller confirmation.



**104.** 2007 Kenworth T800 18' Quad Axle Dump Truck, 80,000 GVW, Eaton fuller 8 speed; CAT C13 ACERT, 385/65R 22.5 fronts, 11R 24.5 rears, 18' steel bed Godwin, electric tarp opener, 270,000 miles, LED lights, aluminum alloy rims, 1 owner.



**106.** 2014 Yanmar SV100-2B excavator, 1 Owner. Rubber track, back fill blade, C.A.H. 2700 hrs, quick coupler, auxillary hydraulics.

# Retirement of Schoen Inc. Construction Equipment Auction

December 2021						
Sun	Mon	Tue	Wed	Thu	Fri	Sat
			1	2	3	4
5	6	7	8	9	10	<b>11</b>
12	13	14	15	16	17	18
19	20	21	22	23	24	25
26	27	28	29	30	31	

**Like new Asphalt Paving Equipment,  
Dozers, Excavators, Trucks,  
Trailers, Compactors, Skid Mounts & more.**

**Saturday December 11, 2021**

**10:00a.m. Starting with live only on smalls.**

**12noon Selling equipment & vehicles with Live and Online bidding.**



**Preview:  
Friday December 10  
from 8am-4pm.**

Scan QR Code  
for internet bidding.



**Auctioneers: John & Jason Whalen, Mike Murry, George Bly, Jacob Ramos**

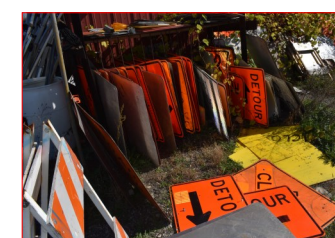


**210.** 9 Yard Pro-Tec stone mixer box

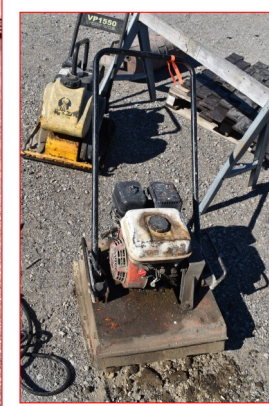


**208.** 7 Yard gravel box

**Saturday December 11, 2021  
10:00a.m. Starting on smalls  
12:00noon selling Equipment  
with online bidding.**



**WHALEN WHALEN**  
REALTY & AUCTION, LTD.  
**419-875-6317**



**120.** Wheel loader 4" pallet fork, 39 1/2" wide in between center, 24" spacing



**186.** Wrecking ball, 3" Tall x 2' x 2' 2 Ton



**188.** General 671 Hydraulic Auger Power head skid mount



**192.** 48" Pallet forks skid mount



**194.** GAR-BRO 3 yard concrete pouring bucket



**189.** 16" Auger bit



**162.** Amulet mounted Thumb, Fits Excavator/ Backhoe



**198.** 24' x 4' Pro-Tec trench box, with paperwork and OSHA Certification. 4" double wall



**164.** BK 12" trench bucket, 8" pin spacing, 2 1/4" pin, fits Yanmar Excavator



**172.** WB 36" Excavator bucket, 8" pin spacing, 2 1/4" pin, 12" width Fits Yanmar Excavator.



**170.** BK 30" Excavator bucket, 8" pin spacing, 2 1/4" pin, 12" width Fits Yanmar Excavator



**174.** WB 48" ditch bucket, 8" pin spacing, 2 1/4" pin, 12" width Fits Yanmar Excavator



**176.** BK 60" Ditch Bucket, 8" pin spacing, 2 1/4" pin, 12" width Fits Yanmar Excavator



**178.** 72" Ditch grading bucket, 3 1/8" pin, 18 1/2" in between centers, 12" spacing. Fits JD 200 Excavator.



**180.** BK Excavator bucket, 48" wide, 44" tall, 5' depth, 3 1/8" pin, 18 1/2" in between centers, 12" spacing



**182.** GP Excavator bucket, 30" wide, 44" tall, 5' depth, 3 1/8" pin, 18 1/2" in between centers, 12" spacing



**184.** WB Backhoe trench bucket, 2 1/8" front pin, 2" back pine, 12" in between centers, 8" spacing.



**168.** WB 18" Excavator bucket, 8" pin spacing, 2 1/4" pin, 12" width Fits Yanmar Excavator.



**190.** 6" Auger bit



**196.** 1 Yard homemade concrete pouring



**202.** 16' x 4' Pro-Tec trench box, with paperwork and OSHA Certification. 4" double wall.



**200.** 24' x 6' Pro-Tec trench box, w/paperwork & OSHA Certification. 4" double wall

**Auction Held at  
3924 South Ave.,  
Toledo OH 43615**



**204.** 12' x 8' Pro-Tec trench box with paperwork and OSHA Certification



**206.** 8' x 6' Efficiency Products trench box, aluminum sides, 3" double wall OSHA certification.

**10:00a.m. Starting on smalls  
12:00noon selling Equipment  
with online bidding.**



**Pick up dates:** Loader available Sun. Dec. 12 from 10am-2pm, Mon. & Tue. Dec. 13 & 14 from 8am-2pm. Any time after that is by appointment only. Everything must be removed within 30 days. Buyer responsible for items after the auction.



**WHALEN WHALEN**  
REALTY & AUCTION, LTD. **whalenauction.com**

**Terms:** Cash or check w/I.D., 3% processing fee on credit/debit cards. No items removed until paid in full. Buying at auction and in "as is" condition, no warranties or guarantees on items sold. No items being sold subject to financing. Lunch by Sandy's.

