



ALDERFER  
AUCTION

AUCTION | APPRAISAL | DOWNSIZING | REAL ESTATE

## FINE & DECORATIVE ARTS AUCTION

Thursday, June 6, 2019 | 10:00 AM ET



\$25



Front Cover: 3258 Japanese Bronze Tiger  
Inside Front Cover (Clockwise from top right): 3113, 3022, 3223, 3283, 3019, 3189, 3012, 3079

## AUCTION DETAILS

### Fine & Decorative Arts Preview

Saturday, June 1st from

9:00AM – 12:00Noon

Monday, June 3rd from

9:00AM – 4:00PM

Tuesday, June 4th from

9:00AM – 4:00PM

Wednesday, June 5th from

8:00AM – 4:00PM

Thursday, June 6th at 8:00AM

### Inquiries

[AlderferAuction.com](http://AlderferAuction.com)

[FineArt@AlderferAuction.com](mailto:FineArt@AlderferAuction.com)

[ConditionReport@AlderferAuction.com](mailto:ConditionReport@AlderferAuction.com)

[Online Absentee/Phone Bid Form AlderferAuction.com](http://AlderferAuction.com)

215.393.3000 Phone

❖ Indicates lot is pictured in catalog.

## INVITING FINE & DECORATIVE ART CONSIGNMENTS FOR FALL/WINTER 2019



Like Us at [@AlderferAuction](https://www.instagram.com/AlderferAuction)

Members of: NAA & PAA; Designations CAI, MPPA & CES; USPAP Compliant.

AY002260



Download our App

501 Fairgrounds Road | Hatfield, Pennsylvania 19440 | [AlderferAuction.com](http://AlderferAuction.com) | 215-393-3000



# COLLECTOR'S

Wednesday, June 5th **Live & Online** at 10:00 AM

**TWO** Auctions **ONE** Day

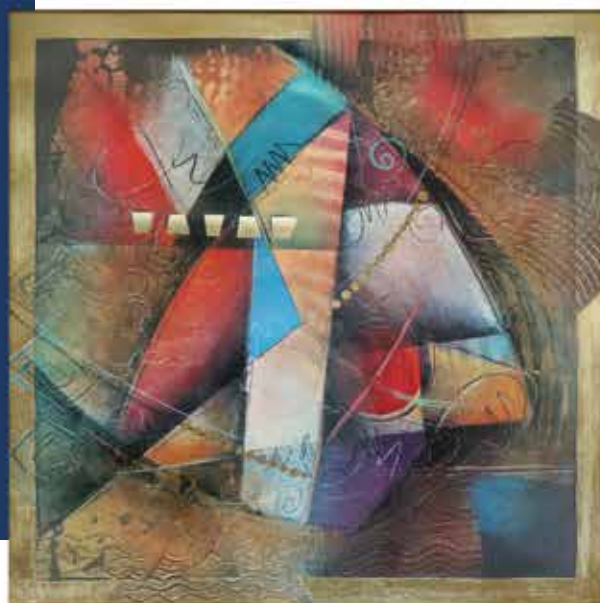


## DISCOVERY ART

Wednesday, June 5th

**LIVE at 9:00 AM**

Over 250+ Works of Art  
19th, 20th & 21st Century artists  
working in oil, watercolor, pastel  
& mixed media. Many works by  
listed lesser known artists, works  
needing definitive attribution &  
some in need of restoration or framing.





## AUTOMOBILES



❖ 3001

### 2017 Ford LFP 727 Mustang GT

VIN #: 1FA6P8CF7H5244558, Estate Owned. 2 door coupe passenger car with a V8, 5.0L supercharged engine, 6 speed manual transmission, 165 miles, 727HP, GT trim level, gasoline, RWD, Roush Ford Racing phase 2 supercharger # 20160309AL stamped on housing. Lebanon Ford Performance package from Lebanon, Ohio includes certificate. Grabber Blue Mustang Registry. Bottom splitter aero effects. Brembo brakes. Pirelli P-Zero 275/40ZR19 rear tires and 255/40ZR19 front tires. Original 5.0 engine cover, air intake system, Ford GT strut tower support brace and steering wheel included.

**25000 – 35000**



❖ 3002

### 1965 Ford Mustang 289

VIN #: 5F07C612806, Estate Owned. 2 door coupe passenger car, V8 engine with an automatic transmission. 50,093.7 miles, RWD, 289 Trim# 57 Body 65A trim level. Bright red with minor chips and touch ups. Edelbrock intake manifold and air cleaner. Aftermarket "Mustang powered by Ford" valve covers. American Racing aftermarket rims. P225/70R14 rear tires. P235/60R14 front tires. Sunpro aftermarket gauge cluster. Aftermarket Sony radio, aftermarket center console with cup holders. (Removable) New aftermarket Mustang steering wheel, wood/metal combination. Ford racing floor mats. Sick Speed aftermarket horn. Black and red interior.

**7000 – 10000**

## AUTOMOBILES



❖ 3003

### 1975 Pontiac Trans Am

VIN #: 2W87S5N570548, 2 door Coupe passenger car, V8 400 cu in. automatic transmission, 61,109.0 miles, RWD. Black with dark wine interior. Engine has been completely rebuilt. Four barrel Holley carburetor, Edelbrock intake manifold, hydraulic lifters. Moroso valve covers. All rebuild paperwork included. Transmission rebuilt, posi-rear. Shaker air scoop and hood. P235/70R15 tires front and rear.

**8000 – 12000**



❖ 3004

### 1969 Saab Sonett V4

VIN #: 97001654, Estate Owned. 2 door coupe passenger car, 1500cc V4 engine manual on the column transmission, 65 HP, 55,792 miles, FWD. Car is not currently in running condition. Missing ignition key. As is condition. Red with black interior. Interior roll cage.

**4000 – 8000**





❖ 3005

**1973 Mini 1000**

VIN #: XA2S1-N-1066329A, Estate Owned. 2 door coupe passenger car, inline 4cyl engine 4 speed automatic transmission, 24,797.8 miles, FWD. Right hand drive. Metallic green with olive green interior. White roof. Vent/heat. Aftermarket Sirius/XM hookup with added rear speakers. 10" rims.

**6000 – 10000**

❖ 3006

**1976 Moto Guzzi V1000 Convert Motorcycle**

VIN #:132141, Estate Owned. 949cc 2 speed manual with torque converter transmission, 30,653 miles, 71HP. Bike does not have an ignition key. AS-IS. Running condition unknown. Engine has a torque converter which fed engine power to a conventional clutch. The clutch shifts between two speeds but the torque converter allows the bike to stop and start in either gear. Shaft drive. Fully dressed bike with crash bars and hard saddle compartments.

**1000 – 3000**



❖ 3007

**1971 Harley Davidson Motorcycle**

VIN #: 3A31925H1, Estate Owned. V-Twin engine, 14,846 miles on odometer. Bike does not have a key. Running condition unknown. Bike is in need of maintenance and repair. Handlebars are loose. Custom, aftermarket parts.

**1000 – 3000**



## HISTORICAL



❖ 3008

### Japanese Armor From The Edo Period

Set of Japanese armor from the Edo period (1603-1868) consisting of helmet (kabuto) with 5-plate neck guard. Helmet measures 11" x 13". Set includes face guard (men yoroi) presenting facial features and horse hair facial hair. Armor further includes set of chain-mail covered armored sleeves (kote) with solid hand guards presenting chrysanthemum designs. Set also contains multi-plate design cuirass (both chest and back plates) as well as pieces of additional armor for shoulders and lower body. Lacquered metal exhibits some chipping with loss and mounting/supporting silk padded backings exhibit significant loss/degradation. Set is incomplete.

500 – 700

❖ 3009

### Japanese Katana Sword-Signed

Japanese katana sword with 26.25" blade and 5.75" tang. Tang (Nakago) presents 2-holes and exhibits a five kanji character signature. Sword presents floral menuki and kashira (end cap) with a rounded rectangular tsuba measuring 2.75" x 3". Blade presents wavy temper line (hamon) and exhibits some small spotting. Sword housed in leather covered wood scabbard (WWII mounts).

1500 – 3000



❖ 3010

### Japanese Katana Sword-Signed

Japanese katana sword with 28.5" blade and 6.5" tang. Tang (Nakago) presents 2-holes and exhibits a seven kanji character signature. Sword presents no menuki and a smooth kashira (end cap) with a rounded tsuba with cut-out geometric design measuring 3". Blade presents straight temper line (hamon) and exhibits some small spotting. Sword housed in lacquered wood scabbard.

1500 – 3000



❖ 3011

### Japanese Katana Sword

Japanese katana sword with 26" blade and 5" tang. Tang (Nakago) presents 1-hole. Sword presents floral menuki and a kashira (end cap) presenting a pole-arm design with a rounded tsuba measuring 2.75". Blade presents irregular temper line (hamon) and exhibits some small spotting. Sword presents silver blade collar (habaki). Sword housed in wood scabbard.

1000 – 2000



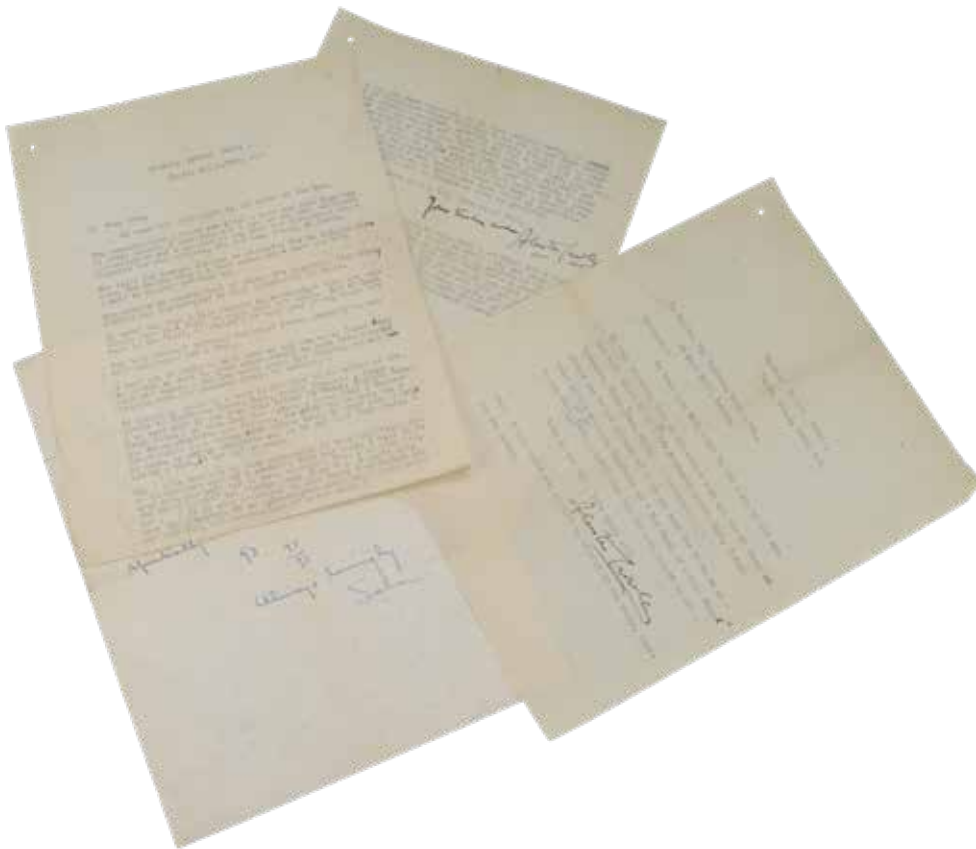


❖ 3012

**Imperial Japanese Katana Sword-Signed**

Japanese katana sword with 21.25" blade and 5.75" tang. Tang (Nakago) presents 2-holes and exhibits a eight kanji character signature with stamp of the 16-petal kiku-mon imperial family chrysanthemum on one side of the tang with other side displaying nine kanji character signature . Sword presents floral menuki and kashira (end cap) with a geometric tsuba measuring 3" x 3.5". Blade presents straight temper line (hamon) and exhibits some small spotting. Sword housed in lacquered wood scabbard. Sword presents silver plated copper blade collar (habaki). Sword housed in wood scabbard.

**4000 – 6000**



❖ 3013

**Archive Related to Aleister Crowley**

Five letter archive related to Aleister Crowley (1875-1947) English occultist, writer, magician, poet, painter, and mountaineer. Collection also includes letters from Leah Hirsig (1883-1975) mistress of Aleister Crowley and fellow occultist. Four of the letters are written to Alma Hirsig Bliss (1875-?), sister of Leah Hirsig, occultist and painter. Grouping includes; Two TLS (1pp and 2pp) dated Tunisia in 1923 signed by Aleister Crowley and three letters (2-ALS and 1-TLS) signed Sala (Leah Hirsig). Content of letters include family news, financial issues, and news related to Crowley. Please request detailed listing.

**1500 – 2500**

## JEWELRY

❖ 3014

### 14K White Gold Emerald and Diamond Ring

Features (1) 9 X 6mm emerald cut Emerald flanked by (2) 2.7mm round Diamonds, approx. .14ctw. Size 4. 2.5gtw.

200 – 400



❖ 3016

### Chopard 18KW Gold Heart Ring with Diamonds

12 X 11.5mm white gold Heart with Sapphire crystal glass center and perimeter of (25) 1.3mm round Diamonds, approx. .25ctw. Size 4 3/4. 7.4gtw.

400 – 600



❖ 3017

### 14K Rose Gold and Diamond Hoop Earrings

Each 1 3/8" long full oval, hinged hoop with post and locking mechanism, features (16) 2.5mm round Diamonds along front of hoop and (11) along inner line of hoop facing outward. Pair: approx. 3.24ctw. 12.0gtw.

1000 – 1500

❖ 3018

### 14KY Gold Carved Jade Necklace

19" long with 2 3/4" drop. Features (7) 18 X 11mm flat ended oval and (1) 38 X 22mm oval floral carved Jade. 31.1gtw.

400 – 600



❖ 3019

### 18K Gold Diamond and Ruby Violin Pin Pendant

2 1/4" X 1". 18K yellow gold Violin features Diamond accented tuning pegs, pavé-set Diamonds that encrust the body and chinrest and square cut channel-set Rubies that line the fingerboard under the strings. Approx. .40ctw Diamond. 12.0gtw.

400 – 600



❖ 3020

### 14KY Gold Citrine Pendant on Omega Necklace

17" long, 6mm wide yellow gold omega with safety catch. Enhancer pendant features (1) 13 X 11.5mm checkerboard top cushion cut Citrine in dangling knocker style setting with (4) 1.5mm round Diamond and (2) 2.5mm round Ruby cabochon accents. 45.4gtw.

800 – 1200

❖ 3021

### 14KW Gold Diamond Solitaire Ring. 3.19Ct

Features (1) 9.5 - 9.62 X 5.69mm round brilliant cut Diamond, 3.19ct, Colour: I, Clarity: SI2, Cut: Very Good, Polish and Symmetry: Good, Fluorescence: none. GIA Report Number: 5202132692. Size 6 1/2. 3.1gtw.

12000 – 18000



❖ 3022

### Platinum Filigree Diamond Brooch Pin. 5.25CTW

2 1/8" long. Features (1) 7.0mm round old cut Diamond, 1.25ct Clarity: VS, Colour: H1 with (4) 5.0mm round Diamonds, 2.00ctw and (4) 4.0mm round Diamonds, 1.00ctw Clarity: VS to I1 Colour: GHI. Brooch total Diamond weight: 5.25cts. 11.5gtw.

4000 – 5000







❖ 3025  
**Platinum Diamond Brooch.**  
**3.46CTW**  
 2 3/4" long platinum brooch with 14KY gold pin finding. Features (1) 6.0mm old cut Diamond, approx. 1.00ct, Clarity: VS Colour: G, (2) 4.50mm Diamonds, approx. 0.70ctw, and (44) round Diamonds, approx. 1.76ctw. 13.2gtw.  
**2000 – 3000**



❖ 3026  
**18KY Gold Ulysse Nardin Repeater Pocket Watch**  
 46.5mm. Open face. Single Sunk. Locle and Geneva. Serial #14003. 70.1gtw.  
**2000 – 4000**

❖ 3028  
**Azimuth Watch Co. Automatique Wrist Watch**  
 51.5mm lug end to lug end. Retrograde Minutes Jour et Nuit. Genuine Crocodile band with deployment buckle.  
**500 – 1000**



❖ 3023  
**18KY Gold Diamond Necklace**  
 16" long with 2" drop. Yellow gold with white gold end strips. Centerpiece is set with (12) 1.5mm round Diamond accents, approx. .18ctw. 59.2gtw.  
**1200 – 1800**



❖ 3029  
**Bettina 18KY Gold Swan Brooch with Diamond**  
 2 1/8" X 1 7/8". Textured and polished yellow gold. Features (1) 2mm round Diamond eye. 18.9gtw.  
**400 – 600**

❖ 3027  
**Perrelet Wrist Watch. Automatic Chronograph**  
 46mm lug end to lug end. Series No. 073/150 Limited.  
**400 – 600**



❖ 3024  
**14K Gold Omega with 10K Citrine Pendant Slide**  
 17" long, 4mm wide 14K reversible yellow to white gold omega necklace. 10K two-tone slide features (1) 15 X 10mm pear shape Citrine flanked by white gold illusion setting with (6) small round accent Diamonds. 14K Omega: 15.4gtw plus 10K Pendant Slide: 5.5gtw.  
**300 – 500**



## JEWELRY



❖ 3030

### 18KY Gold Equestrian Cufflinks

Pair of 23.5 X 17.5 X 7.5mm 3 dimensional textured yellow gold Horsehead with Crop cufflinks. 19.9gtw.

**300 – 500**



❖ 3031

### Platinum Diamond Ring. 3.2CTW

Features (1) 6.50mm round Diamond, 1.00ct, flanked by (2) 6.20mm round Diamonds, 1.80ctw. Clarity: VS Colour: GH, and accented by (10) round Diamonds, 0.40ctw, Clarity: VS Colour: G. Size 7. 7.4gtw.

**3000 – 6000**



❖ 3032

### Omega Seamaster Watch

40mm lug end to lug end. Waterproof. Dark blue rubber band with deployment buckle.

**800 – 1200**

❖ 3033

### Longines Wrist Watch

43mm lug end to lug end. Hinged rear cover. Glass dust cover. 21 Jewels. L614.2.

**300 – 600**



❖ 3034

### Omega Automatic Seamaster Wrist Watch

44mm lug end to lug end. Date register. Genuine Leather Hadley-Roma 20L 702 black band.

**800 – 1200**



❖ 3035

### Rolex 10KY Gold Oyster Perpetual Wrist Watch

39mm lug end to lug end. Officially certified chronometer. 6015 699993. Personalized on back case cover. Brown Speidel Lizard grain anti-allergic water resist 16 band.

**1000 – 2000**



❖ 3036

### Rolex Oyster Perpetual Air-King Precision

Steel wrist watch. 14010. 42mm lug end to lug end. Officially certified chronometer. Oyster Swimpruf. 557B 78350 19.

**1500 – 2500**



❖ 3037

### 18K Rose Gold Pocket Watch with Box

52.5mm. Open face. Monogrammed rear lid is marked 18K and bezel of front glass is gold. Pocket watch body frame is gold filled/plated. Watch bow shows wear. 3 single sunk registers. Transparent dust cover. A. Thommann. Locle. 112.3gtw.

**600 – 900**



❖ 3038

### 18K Rose Gold Elgin Nat'l Watch Co. Pocket Watch

55mm hunter case with two dust covers and monogrammed front cover. Triple sunk. Serial #807599. B.W. Raymond. 207.7gtw.

**1000 – 1500**





❖ 3039  
**14K Gold Diamond Tennis Bracelet**  
 7" long with safety catch and chain. Features (33) 4.4mm round Diamonds, approx. 13.2ctw, Clarity: I, color HI. 19.6gtw.  
**3000 – 6000**



❖ 3042  
**14KY Gold Brooch with Stick Pin Bouquet**  
 2 1/2" X 2 1/8". 14K yellow gold ribbon bow base holds (14) assorted stick pins including Diamond, Ruby, Garnet, Citrine, Turquoise, Seed Pearls, Snake carved Scarab, Amethyst, Micro Mosaic Butterfly, enameled Leaf, carved Insect with faceted Ruby eyes. 25.6gtw.  
**400 – 600**



❖ 3040  
**14KY Gold Link Bracelet**  
 8" long. 11.7mm wide with pressure tongue clasp and two safety catches. 26.8gtw.  
**500 – 700**



❖ 3043  
**Platinum, 14KY Gold, Citrine and Diamond Ring**  
 14K yellow gold shank. Platinum top features (1) 15.5 X 11.5mm emerald cut Citrine flanked by (2) 5 X 2.5mm marquise and (4) 2.6mm round Diamonds, approx. .56ctw. Fits size 5 1/2 with arthritic beads. 7.4gtw.  
**300 – 500**



❖ 3041  
**18KY Gold American Watch Co. Pocket Watch**  
 51mm hunter case. Single sunk. Key wind set. Serial #250,852. 122.8gtw.  
**1000 – 1500**

❖ 3044  
**Platinum Diamond Ring**  
 Features (1) 7.98 X 7.91 X 4.45mm round brilliant cut Diamond, approx. 1.70ct, Clarity: I1 Colour: LM, flanked by (8) round accent Diamonds, approx. .24ctw. Center Diamond has a chip on girdle that extends into pavilion. Size 7. 4.7gtw.  
**2000 – 3000**



❖ 3047  
**14KW Gold Diamond Ring Wedding Set**  
 Engagement ring features (1) 4.8mm round brilliant cut Diamond flanked by (2) 2.25mm round Diamonds. Band features (5) 2.0mm round Diamonds. Set: approx. .68ctw. Size 6. 4.5gtw.  
**300 – 500**



❖ 3045  
**Rhodium Plated Diamond and Pearl Brooch**  
 2" long. Features (1) 6.7mm Pearl with (2) 4mm and (8) 3.5mm round mine cut Diamonds, approx. 1.86+ ctw. 4.9gtw.  
**500 – 700**



❖ 3048  
**14KW Gold Filigree Diamond and Sapphire Pin**  
 3" long. Features (1) 3.5mm and (4) 2.0mm round Diamonds, approx. .30ctw with (4) rectangular blue Sapphire accents. 5.3gtw.  
**200 – 400**



❖ 3046  
**14KY Gold Imperial Precious Topaz Necklace**  
 15" long. Features (1) 7.5mm round flanked by (2) 6.5mm and (2) 5.5mm round faceted golden pink Topaz. 13.4gtw.  
**300 – 500**

❖ 3049  
**14K Gold Diamond and Sapphire Bracelet**  
 6 5/8" long white gold filigree bracelet with locking clasp features (3) 2.5mm round Diamonds, approx..18ctw and (6) 5 X 2.5mm rectangular blue Sapphires. 14.6gtw.  
**300 – 500**





## JEWELRY



❖ 3050

### 14K Gold Sapphire and Diamond Bracelet

6 7/8" long white gold filigree bracelet with locking clasp features (13) 2mm round single cut Diamonds, approx. .39ctw and (13) 5 X 3mm diamond shape blue Sapphires. 10.0gtw.

**300 – 500**

❖ 3052

### 14KY Gold Jos. Johnson Pocket Watch

47.5mm rosy yellow gold hunter case. Key wind/set. Lever escapement. Single sunk. Serial #15478. Comes with 2 keys. 78.9gtw.

**600 – 800**



❖ 3055

### Ladies Rolex Wrist Watch

Two Tone. 1993. Diamond Mother of Pearl dial with an aftermarket CZ bezel. 69173. S32323.

**1500 – 2000**



❖ 3056

### 14KY Gold Diamond and Enamel Pin Brooch

14K yellow components. Gold testing is inconclusive. Diamonds are set in white heads. Locking c- clasp needs adjusting. Features (1) 4.4mm (1) 4.3mm (1) 3.9mm (4) 2.5mm and (3) 1.5mm round Diamonds, approx. 1.0ctw. 7.1gtw.

**300 – 500**

❖ 3057

### 14K Rose Gold Opal and Diamond Ring

Features (1) 10 X 8mm oval Opal cabochon accented by (10) 2.3mm, (2) 3.0mm and (22) 1.5mm round Diamonds, approx. 1.0ctw. Size 6 3/4. 5.8gtw.

**400 – 600**



❖ 3058

### 14K Rose Gold Elgin Pocket Watch

42.5mm hunter case. Single sunk. Serial #2266124. 64.9gtw.

**500 – 700**



❖ 3051

### 14KW Gold Diamond and Sapphire Necklace

24" long "Y" design peanut chain necklace has a 2" drop to spring ring. 1 3/8" X 7/8" filigree pin pendant features (3) 3mm and (6) 2mm round Diamonds, approx. .50ctw and (8) rectangular blue Sapphires. 9.6gtw.

**300 – 500**

❖ 3053

### 14KY Gold Diamond Ring

Features (3) 4.0mm round mine cut Diamonds, approx. .75ctw. Center Diamond is set in square of white gold and flanked by two octagon shaped flush heads. Size 9 1/2. 5.0gtw.

**300 – 500**



❖ 3054

### Platinum Diamond Ring

Features (1) 4.5mm flanked by (2) 2.0mm round Diamonds, approx. .42ctw. Size 6 1/2. 3.5gtw.

**200 – 400**



❖ 3059

**14K Gold Watch Chain with Diamond Fob**

7" long 14K rose gold chain with rose and white gold spinner fob featuring (2) 3.5mm round Diamonds, approx. .34ctw. Spring ring is 10K. 27.1gtw.

**600 – 800**



❖ 3060

**Cartier Sterling Vermeil Tank Wrist Watch**

28mm lug end to lug end. Roman Tank type. Silver with Gold vermeil: Argent Plaque Or G 20 M. Shows wear. Comes with Certificate of Origin Worldwide Guarantee.

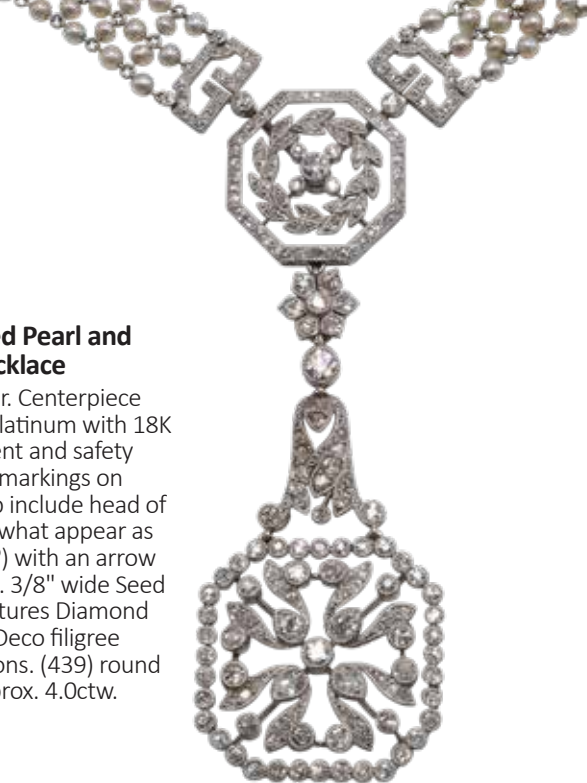
**200 – 400**

❖ 3061

**Platinum Seed Pearl and Diamond Necklace**

23" long sautoir. Centerpiece drops 2 3/4". Platinum with 18K clasp component and safety chain. Illegible markings on tongue of clasp include head of an animal and what appear as two letters (TJ?) with an arrow between them. 3/8" wide Seed Pearl mesh features Diamond encrusted Art Deco filigree clasp and stations. (439) round Diamonds, approx. 4.0ctw. 48.0gtw

**1000 – 1500**



❖ 3062

**14K Waltham Pocket Watch, Masonic Fob Chain**

42.2mm octagonal white gold case. Double sunk. 17 Jewels. Serial #24454598. 13 1/2" long fancy bar watch chain, with swivel and spring ring, features a knocker style hinged 32nd degree Masonic emblem fob. Chain with fob: 13.2gtw plus Watch: 55.8gtw.

**400 – 600**

❖ 3063

**English Gold Cigar Set**

Complementing set with match safe and gold rimmed Bakelite cigar tip and gold carrying case. All pieces are hallmarked and are 9 carat gold. Includes fitted case. Match safe is 1.75" round and the cigar case is 3" long. 21.4 dwt not including the tip.

**400 – 800**



## SILVER



3064



3066



3065



3067

❖ 3064

### Gorham Sterling Silver Bowl

With reticulated border and chased bowl. 22.6ozt. 2.5"h x 11.5"round.

**300 – 500**

❖ 3065

### Gorham Sterling Silver Nut Dish Grouping

(10) "Iris" pattern nut dishes with (10) figural salt spoons hallmarked Hollan. 10.38ozt. .75"h x 4.5"w and 2.75"l

**300 – 500**

❖ 3066

### Sterling Silver Serving Tray

Tortoise Shell design, hallmarked 925 sterling Made in Mexico. Approx. 95ozt. 2.5"h x 29"w x 17.5"d

**1000 – 2000**

❖ 3067

### 14k Gold Gentleman's Suite

14k solid gold match safe, 14k gold pen knife, and gold plated cigar cutter in original Bailey Banks and Biddle fitted case. Also includes original gifting letter to the original owner. Match safe is 14.5dw.

**500 – 800**





❖ 3068  
**14k Gold and Sapphire Cigarette Case**  
14k yellow gold case with sapphire button. Hallmarked 14k "WW 310". 40.6dwt. 3"h x 2.25"w  
**1500 – 2500**

❖ 3070  
**French Gold and Sapphire Cigar Holder**  
Bakelite cigar or cheroot holder with 14k (tested) yellow gold tip decorated with 3 sapphires. Includes original fitted case from Polak Aine Bijoutier Paris. Case is 4.75"l x 1.5"w  
**300 – 500**

❖ 3069  
**19th c. Russian Sterling and Enamel Shot Glass**  
Finely detailed floral decoration in traditional colors. Hallmarked with combined purity and city mark (Moscow) used between 1882-99. 2"h x 1.75"round  
**200 – 300**

❖ 3071  
**Dutch Silver Cow Creamer**  
Flip lid with fly handle marked with Dutch export stamp, ruby red glass eyes, multiple illegible hallmarks on the underside. Purity is believed to be .833. 4.5"h x 6.25"w x 2.25"d  
**500 – 800**

## SILVER



3072



3073



3074



3075

❖ 3072

### **Sterling Silver Center Bowl**

In the form of a flower with 6 reticulated lilies. Manufactured by the Watson Company, Attleboro, MA. 33.82 ozt. 3.5"h x 14"w x 14"d  
**500 – 800**

❖ 3073

### **Austrian 4 Ducat Gold Coin Pendant**

Dated 1915 and housed in a 14k yellow gold bezel. 13dw. 1.75"round  
**500 – 800**

❖ 3074

### **Iranian Gold Pahlavi Coin Pendant**

Dated 1355 on the Solar Hijari calendar, housed in an 18k yellow gold bezel. 1"round  
**300 – 500**

❖ 3075

### **Art Nouveau Sterling Silver Letter Opener**

Figural nude with sweeping blade, by Redlich & Company. 3.8ozt. 10.5"l  
**300 – 500**

3076



3077



❖ 3076

**German .800 Silver Dresser Box**

Decorated with frolicking Putti, decorated panels and borders. German hallmarks. 7.72ozt. 1.25"h x 5"w x 3.25"d

**300 – 500**

❖ 3077

**Sterling Silver Bowl**

Arts and crafts style with hammered rim, #6059. 12.14ozt. 2.75"h x 10.5"round

**300 – 500**

3078



❖ 3078

**Sterling Candlesticks**

German, foliate decoration and banding on square base. Hallmark appears to be Stuttgart. 11.18ozt. 9"h x 3"w x 3"d

**300 – 500**



## DECORATIVE

❖ 3079

### Louis Vuitton Custom Made Alzer Shoe Trunk

In orange, with 8 compartments in beige suede with signed brass and original interior label and serial number. Minor wear. 14.5"h x 27"w x 9"d

1000 – 2000



3079

❖ 3080

### Meissen Dessert Stand

Purple Indian pattern, 3 tier dessert or tea stand with figural finial. Signed. 22"h x 11"round

300 – 500



3080

❖ 3081

### Meissen Covered Tureen

Purple Indian pattern, with hand painted figural handle on lid and gilt decorated handles and trim on base. Signed. 12"h x 14.5"w x 9"d

300 – 500



❖ 3082

### Meissen Serving Platter Grouping

Purple Indian pattern 20.5"l x 15" w, 13.25"l x 9.25" w, 11.5" h x 7.75" w and 8.75" h x 6" w bowl.

300 – 500



3082

❖ 3083

### Meissen Serving Dish Grouping

Purple Indian pattern, all signed. 8.75" square serving bowl, 12" round serving bowl and 12.5" round cake plate.

300 – 500



3081



3083



3084



❖ 3084

**Meissen Serving Pieces**

Purple Indian pattern, all signed. Serving spoon, double salt, gravy boat with under plate, bell, and 9.5" square dish.

**300 – 500**

❖ 3085

**Sevres Cup and Saucer Grouping**

Service for 12, white ground with heavy gilt decoration. All signed. 4.25" h and 5.25" round

**300 – 500**



3085

❖ 3086

**Royal Doulton Fish Plates**

Gilt decorated borders, retailed by Bailey, Banks and Biddle, all signed by Samuel Wilson. Plates include trout, perch, carp, haddock, poa, braize, gray mullet, mackerel, smelt, salmon, pike and 1 illegible. 9" round

**500 – 800**

3086





## DECORATIVE



3087

❖ 3087  
**Royal Dux Flamingo Floor Vase**

Large pink flamingo resting against two large bamboo cane flower holders all on a base of earth and leaves. 37.5"h x 12"w x 12"d

**800 – 1200**

❖ 3088  
**Carved German Whistler**

Figural key wind whistler carving of a baseball player. 16"h x 5"w x 3"d

**500 – 800**



3088



3089

3090



❖ 3089  
**Carved German Whistler**

Figural key wind whistler of a gentleman leaning upon a lamppost. 20"h x 5"w x 3"d

**200 – 300**

❖ 3090  
**Congreve Rolling Ball Clock**

Under glass case, keeps time by counter balancing. 3 chronograph porcelain dials, museum quality replica. 20"h x 16"w x 16"d

**800 – 1200**

❖ 3091  
**Coiled Spring Fusee Clock**

Under glass, enamel face signed by maker William Smith. 16"h x 6"round

**300 – 500**

❖ 3092  
**Skeleton Clock**

Under glass, unsigned enamel dial. 21"h x 12"w x 7"d

**300 – 500**



3091

3092







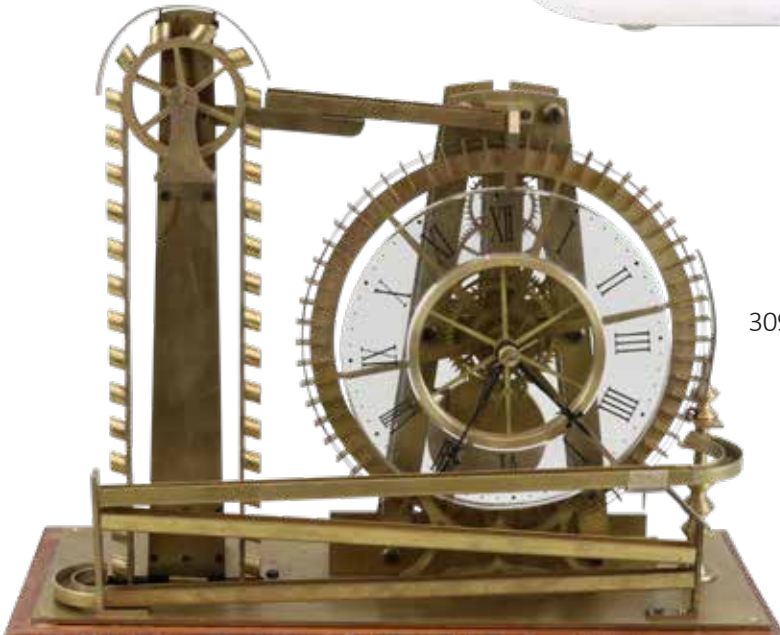
3093



3095



3096



3094



3097



3098

❖ 3093

**Skeleton Clock**

Under glass, enamel dial not marked. 20"h x 12"w x 7"d

**300 – 500**

❖ 3095

**Skeleton Clock**

Battle axe strike, dial is not signed. 18"h x 11"w x 7"d

**300 – 500**

❖ 3094

**Waterwheel Mystery Clock**

Constant force waterwheel timepiece, dial is not signed. 19"h x 18"w x 9"d

**600 – 900**

❖ 3096

**Cowden and Wilcox Salt-Glazed Stoneware Crock**

3 gallon, cobalt blue foliate decoration. Stamped "Cowden & Wilcox Harrisburg, PA" on front, 12"h x 10"round.

**200 – 300**

❖ 3097

**Cowden and Wilcox Salt-Glazed Lidded Stoneware Crock**

2 gallon, cobalt blue floral decoration. Stamped "Cowden & Wilcox Harrisburg". 12"h x 8"round.

**200 – 300**

❖ 3098

**Cowden and Wilcox Salt-Glazed Stoneware Crock**

2 gallon, cobalt blue center motif. Stamped, "Cowden & Wilcox Harrisburg, PA". 11.5"h x 8"round.

**200 – 300**

## DECORATIVE



3099



3102



3100



3103



3104



3101



❖ 3099

### **D.P. Shenfelder Salt-Glazed Jug**

2 gallon, with cobalt floral and leaf decoration. Stamped "D.P. Shenfelder Reading, PA". 13"h x 8"round

**200 – 300**

❖ 3100

### **Salt-Glazed Stoneware Pitcher**

Cobalt foliate and leaf decoration. 9"h x 6"w

**200 – 300**

❖ 3101

### **Lot of (2) Salt-Glazed Stoneware Cake Crocks**

Cobalt blue floral and foliate decoration. Largest 6"h x 10"round

**200 – 300**

❖ 3102

### **Lalique Crystal Vase**

"Bacchantes" vase in frosted crystal. Signed. 9.5"h x 8.5"round

**400 – 600**

❖ 3103

### **Chinese Brass and Porcelain Box**

Early porcelain box with cover decorated with foo lion and 5 children on interior. Base is decorated with scholars and cranes and the entirety of the box has a hallmarked brass overlay with dragon and phoenix design.

2.75"h x 3.25"square

**300 – 500**

❖ 3104

### **Chinese Longquan Bowl Grouping**

Pale blue glaze with ribbed exterior and wave form decoration to the interior. Ming Dynasty. 2.75"h x 5.5"round

**300 – 500**

❖ 3105

**Chinese Longquan Bowl Grouping**

Pair of pale blue celadon glazed bowls with black underglaze floral decoration. Ming Dynasty. 2.25"h x 4.5"round and 1.75"h x 6.5"round

**400 – 600**



3105

❖ 3106

**Chinese Swatow Bowl Grouping**

Pair of complementing blue and white floral decorated swatow bowls. Late Ming Dynasty. 2.25"h x 5"round

**300 – 500**



3106

❖ 3107

**Early Chinese Bowl Grouping**

Pair of complementing blue and white decorated bowls (1.5"h x 5.25"round), a dragon and phoenix decorated bowl (2.75"h x 5.75"round) and and black and white underglaze decorated bowl (2.25"h x 5"round). Ming Dynasty.

**400 – 600**



3107

❖ 3108

**19th century Cuckoo Clock by the American Cuckoo Clock Company**

Black Forest style hunter's clock with ornate carved walnut game species. Triple weight driven movement. 53"h x 31"w x 17"d

**600 – 900**



3108

❖ 3109

**Dutch Wall Clock**

Hand paint decorated dial with farmstead scene, Roman and Arabic numerals with mounted figural spandrels. Weight and pendulum driven. 45"h x 14"w

**300 – 500**



3109



## DECORATIVE

❖ 3110

### Ornate Enamel and Brass Mantel Clock Garniture

Floral and urn motif enameling with copper arched dentil molded tops. Copper and brass blossoming floral finials and pillars. 8 day time and strike movement with an enameled and copper floral and sprig dial. Clock. 16"h x 12"w x 7"d

500 – 800



3110

❖ 3111

### Seth Thomas Shelf Clock

Walnut case with weight driven 8 day movement, and Roman numeral dial. 27"h x 16"w x 6"d

200 – 300



3111

❖ 3112

### Seth Thomas Ship's Bell Clock

Brass with 8 day time and strike movement, 10"h x 6.5"w

200 – 300

❖ 3113

### KPM Porcelain Plaque - Carl Meinel

"Daphne", Signed, impressed KPM and scepter. Classical maiden in draped gown with a laurel crown. 13.25"h x 11"w and 17"h x 14"w framed.

3000 – 5000



3113

❖ 3114

### Painted Porcelain Plaque

Unsigned, Portrait of mother and children. 19th c. carved gilt wood frame. 6"round and 10"round framed.

300 – 500



3112



3114



3115



3118



3116



3119

3117



❖ 3115

**Painted Porcelain Plaque**

Signed en verso L.C. Masterman 1897. In period oval frame. 8.75"h x 6.75"w and 13"h x 10.5"w framed.

**300 – 500**

❖ 3116

**Painted Porcelain Plaque**

Unsigned, young female portrait. 19th c. carved gilt wood frame. 6"h x 4.5"w and 12"h x 8.75"w framed

**500 – 800**

❖ 3117

**Porcelain Plaque Grouping**

Pair of complementing plaques signed B. Gaillaux. 16"h x 12"w and 20.5"h x 16.5"w framed

**300 – 500**

❖ 3118

**Porcelain Plaque**

Signed German portrait titled "Flora" in giltwood frame which does have loss. 5.75"h x 4.25"w and 12.5"h x 6.25"w framed

**300 – 500**

❖ 3119

**Limoges Enamel Box**

Royal blue with gilt laurel decoration surrounding a central scene of children playing on a frozen stream, also has white enamel pearls throughout. Enclosure is snug and is signed on the interior. .75"h x 3.5"w x 2.25"d

**300 – 500**



## DECORATIVE



3120



3123



3121



3124



3125



3122

❖ 3120

### Sevres Enamel Potpourri

Hand painted lid with courting and landscape scenes, gilt bronze mounts and feet. Signed to the base. 6"h x 7"w x 5.5"d

500 – 800

❖ 3121

### Kalong Bowl

Thailand, Kalong kilns, black crow pattern. 16th c. 1.75"h x 9"round

1000 – 2000

❖ 3122

### Kalong Bowl

Thailand, Kalong kilns, Fish decoration. 16th c. 1.75"h x 8.75"round

1000 – 2000

❖ 3123

### Chinese Longquan Bowl Grouping

Longquan celadon bowl with impressed floral decoration on the interior and ribbed decoration on the exterior and the other also has impressed decoration but has considerable loss to exterior glaze. 2.75"h x 11.25"round and 2.5"h x 9.25"round

300 – 500

❖ 3124

### Turquoise Celadon Bowl

Hexagonal form, unsigned. 4"h x 8"round

300 – 500

❖ 3125

### Chinese Porcelain Serving Dish

With imperial yellow band and circling phoenix decoration. 2.75"h x 15.5"round

400 – 600



❖ 3126

**Chinese Carved Table Screen**

Hardwood panel carved in relief, depicting daily life in a village. Signed en verso. 22"h x 14"w x 8"d

**400 – 600**



3126

❖ 3127

**Miniature Satsuma Vase**

Finely decorated with scenes of harbor with Mt. Fuji. Signed. 3.5"h x 1.75"w

**300 – 500**



3127

❖ 3128

**G.W. Rufsell Philadelphia Regulator Clock**

Mahogany case with pendulum and weight driven 8 day movement. 42"h x 12.5"w x 7"d

**400 – 600**



3128

❖ 3129

**Louis XV Style Elephant Clock**

Gilt decorated harness adorned with porcelain flowers, some have loss. Dial marked J.E. Caldwell France. 20.5"h x 13.5"w x 6.25"d

**800 – 1200**



3129

❖ 3130

**Skeleton Clock**

Under glass, Dent Guys plaque on base. 16"h x 8"round

**300 – 500**



3130

❖ 3131

**Jaeger LeCoultre Atmos Clock**

Brass finish with signed white dial. 9"h x 8.5"w x 6"d

**300 – 500**



3131

DECORATIVE



3132



3134



3133



3135

❖ 3132

**Fusee Skeleton Clock**

Victorian Gothic style triple fusee clock with open face dial. 24"h x 18"w x 6"d

**400 – 600**

❖ 3134

**Skeleton Clock**

Under glass, brass skeleton clock with fusee movement. 16"h x 16"w x 12"d

**300 – 500**

❖ 3133

**Congreve Rolling Ball Clock**

Under glass, triple dials not marked. 18"h x 16"w x 16"d

**800 – 1200**

❖ 3135

**Miniature Tin "Heart in Hand" Cookie Cutter**

Tin Heart in Hand form cookie cutter soldered to perforated foundation, includes handle. 2.75"h x 1.75"w

**300 – 500**

❖ 3136

**Fritz Bermann Cold Painted Bronze**

Signed cold painted bronze of a cat with mice on a phonograph with a painted horn. 2.5"h

**300 – 500**

❖ 3138

**Fritz Bermann Cold Painted Bronze Grouping**

(4) signed cold painted bronze cats playing musical instruments including a guitar, banjo, accordion and xylophone. 2.25"h

**300 – 500**

❖ 3137

**Fritz Bermann Cold Painted Bronze Grouping**

Pair of signed cold painted bronze cats, the first with gardening tools and the second a cat with mouse drinking milk from a painted bucket. 1.25" - 2.25"h

**300 – 500**





3136



3137



3138





DECORATIVE

3139



3140

3141



3142



3143

❖ 3139  
**Fritz Bermann Cold Painted Bronze Grouping**  
 (4) signed cold painted bronze cats playing musical instruments including a conductor, cymbals, saxophone and trumpet. 2" h  
**300 – 500**

❖ 3140  
**Fritz Bermann Cold Painted Bronze**  
 Signed cold painted bronze of a cat playing a grand piano. 1.75" h x 2.75" d  
**300 – 500**



3144

❖ 3141  
**Fritz Bermann Cold Painted Bronze Grouping**  
 (4) signed cold painted bronze cats, a pair in chef hats cooking and a pair in chairs. 2-2.25" h  
**300 – 500**

❖ 3142  
**Fritz Bermann Cold Painted Bronze Grouping**  
 Pair of signed cold painted bronze cats, the first sewing on a Singer sewing machine and the second a kitten with a candelabra. 1.75"-2.25" h  
**300 – 500**

❖ 3143  
**Galle Cameo Glass Vase**  
 Green floral and vine decoration over a peach and white satin ground, signed. 5.5" h x 2.5" w  
**300 – 500**

❖ 3144  
**Swarovski Crystal Limited Edition "Eagle"**  
 1995 Commemorative 100th Anniversary edition, this is #00203/10000. Adi Stocker designer, sterling silver beak and talons, 9" h, with original stand, certificate, packing and case, approx. 9" h x 14.5" w x 9.5" d  
**500 – 800**



3145

❖ 3145  
**Swarovski Crystal "Soulmates: Panther"**  
 Clear crystal panther on black granite base. Includes original box and paperwork. 8.25" h x 7" w  
**300 – 500**



3146

❖ 3146  
**Whale Oil Lamp Clock Grouping**  
 19th c., the 15 hour clock is a Louis XV era design and the 14 hour is more continental in style. Both pewter, the latter is marked Etain on the base. 13.5" h and 14" h  
**300 – 500**

## DECORATIVE

❖ 3147

### 18hr Whale Oil Clock

Louis XV style pewter clock with Roman numeral meter. 13"h x 4.5"round

200 – 300



3147

❖ 3148

### Chinese Famille Rose Bottle Vase

Finely decorated with two scenes of young maidens, scholars, bats, insects and flora. Includes original cover which has minor loss. 14"h x 8.25"round

300 – 500



3148

❖ 3149

### Guangxu Porcelain Grouping

Set of (2) 7.5" under plates, (3) 5.5" saucers and (2) 2"h x 3.75" round teacups in yellow famille with dragons. All have Guangxu reign marks.

300 – 500



3149

❖ 3150

### Chinese Export Grouping

Stacking and covered bowls, all decorated with genre decoration. Largest 3.25"h x 3.5"round

200 – 300



3150

❖ 3151

### Chinese Snuff Bottle Grouping

Pair of cloisonne, mottled glass and carved hard stone. Tallest 3"h

200 – 300



3151





3152



3153



3154



3155



3156

❖ 3152  
**Chinese Snuff Bottle Grouping**

Pair of reverse painted, glass overlay and signed porcelain bottle. Tallest 4.5"h

**300 – 500**

❖ 3153  
**Chinese Porcelain Snuff Bottle Grouping**

Pair of blue and white porcelain snuff bottles. Tallest 3"

**200 – 300**

❖ 3154  
**Chinese Longquan Jarlet**

Compressed form with impressed floral decoration. 2.25"h

**300 – 500**

❖ 3155  
**Chinese Longquan Miniature Vase**

Double handled miniature vase, craquelure throughout. 2.5"h

**300 – 500**

❖ 3156  
**Chinese Porcelain and Enamel Bowl**

Enamel genre decoration, Ming dynasty 6 character mark. 3"h x 3.5"round

**400 – 600**

DECORATIVE



3157



3159



3162



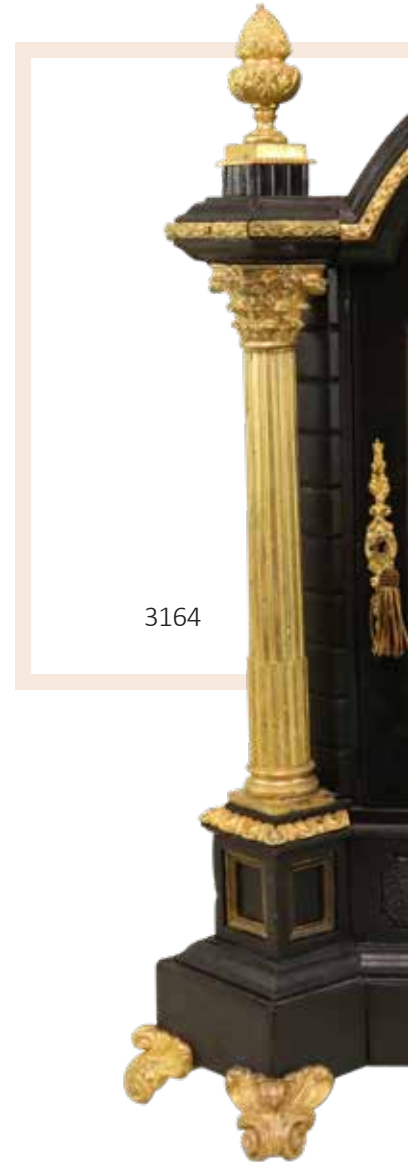
3158



3160



3161



3164





3163



❖ 3157

**German Carved Chiming Bracket Clock**

Winterhalder and Hoffmeier works in a carved mahogany case. 18" h x 12" w x 9" d

500 – 800

❖ 3158

**English Mantel Clock**

Chiming mantel clock with gilt figural decoration and pine cone finials. 25" h x 16" w x 10" d

300 – 500

❖ 3159

**Bronze Renaissance Revival Carriage Clock**

Case decorated with figural columns, nymphs, and winged dragons. 6" h x 4" w x 4" d

300 – 500

❖ 3160

**French Crystal Regulator Clock**

By Le Boutillier and Co. of Paris. Brass and bevel glass case. Painted decorated dial. 8 day time and strike movement with mercury pendulum. 11" h x 6" w x 5" d

200 – 400

❖ 3161

**Tiffany & Co. Mantle Clock**

Mahogany balloon clock with inlaid and bun feet. 12.5" h x 8.5" w x 4.5" d

200 – 300

❖ 3162

**French Mantel Clock**

Gilt decorated mantel clock with an enamel dial. Eight day time and strike movement, top mounted pendulum, and open escapement. Signed works. 14" h x 12" w x 5" d

400 – 600

❖ 3163

**Chelsea Brass Ship's Bell Clock**

By Riggs and Brother's Philadelphia, PA. 8 day movement, 7.25" round.

200 – 300

❖ 3164

**Webster Bracket Clock**

Cathedral form with gilt decorated finials, Corinthian columns, and feet. 31" h x 22" w x 12" d

2000 – 3000

❖ 3165

**French Figural Clock**

Roman numeral brass dial with male and female figural, bell flower sides. Inscribed, "CAVE-NE INDIGNUM!" on front and signed, "Laverqui" on side with marked works. 27" h x 18" w x 9" d

300 – 500



3165



DECORATIVE



3166



3168



3167



3169

❖ 3166  
**Tiffany Style Leaded Glass Lamp**

Blue wisteria form with trunk base. 33"h x 18"round  
**500 – 800**

❖ 3167  
**Tiffany Style Leaded Glass Lamp**

Floral shade with daisies and a reeded stem. 29"h x 22"round  
**400 – 600**

❖ 3168  
**Tiffany Style Leaded Glass Table Lamp**

Slag glass conforming to a scrolled tulip motif on a gilt metal base. 24"h x 18"w  
**400 – 600**

❖ 3169  
**Tiffany Style Leaded Glass Table Lamp**

Geometric floral domical shade with a cut-out edge on a urn shaped marble an carved rosewood base. 30"h x 20"round  
**400 – 600**

❖ 3170  
**Tiffany Style Leaded Glass Chandelier**

Octagonal floral shade. 4.5"h (40"h hanging) x 24"w  
**400 – 600**

❖ 3171  
**Tiffany Style Leaded Slag Glass Floor Lamp**

Floral and foliate shade, blown glass conforming base with brass rings on paw feet. 62"h x 20"round  
**600 – 900**



3170



3171

3172



3174



3173



3175



❖ 3172  
**Miniature Satsuma Vase and Plate**

Finely decorated with chrysanthemum and a vial decoration.  
3.5"h and 3.75"round  
**300 – 500**

❖ 3173  
**Chinese Porcelain Vase Grouping**

Signed baluster vase with scholars and brushpot with floral decoration.  
10"h x 4"round and 4.75"h x 3.5"round  
**300 – 500**

❖ 3175  
**Figural Guanyin Grouping**  
Pair of Guanyin porcelain figures in polychrome and blanc de chine. Tallest 8"h  
**300 – 500**

❖ 3174  
**Chinese Carved Jade Bottle**

Green jade with carved foo lion decoration. 7.5"h x 5"w x 3"d  
**300 – 500**



DECORATIVE

3176



3177



3178



3179



3180



3181



❖ 3176

**Chinese Export Tureen**

Blue and white decoration featuring a garden with cranes and dragon handles, lid is bordered with floral and geometric decoration and topped with a floral finial. Retains Elinor Gordon Villanova paper labels on both pieces. 9.25"h x 13.25"w x 9"d

**300 – 500**

❖ 3177

**Famille Verte Vase**

Genre decoration with 6 character signed base. 32.5"h x 14.5"w

**600 – 900**

❖ 3178

**Chinese Table Screen Clock**

Carved base and enamel dial, face decorated with bats. 19"h x 12"w x 10"d

**400 – 600**

❖ 3179

**Carved Chinese Table Screen Clock**

Carved base and back panel with enamel dial and bat decoration. 20"h x 12"w x 10"d

**400 – 600**

❖ 3180

**Aubusson Tapestry**

Bright medieval scene with floral border. 20th c. 64"h x 77"w

**1000 – 2000**

❖ 3181

**Inuit Whale Bone Carving**

Depicting a polar bear attacking a walrus. Not signed. 3.5"h x 12"w x 2.5"d

**200 – 300**

❖ 3182

**Wrought Iron Pricket Candle Stand**

Turned iron post on a spider leg base. 63"h x 18"w

**200 – 300**

❖ 3183

**Wrought Iron Candle Stand**

Two candlesticks with a twisted three spider legged base and a snuffer. 56"h x 16"w

**200 – 300**



3182



3183

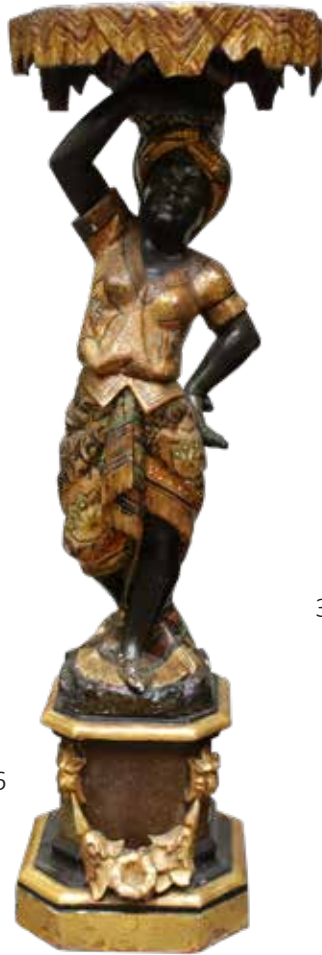
DECORATIVE



3184



3185



3186



3187



3188

❖ 3184  
**Wrought Iron Rush Light**  
Early English rush light on spider leg base. 47"h x 8"w  
**200 – 300**

❖ 3185  
**Wrought Iron Candlestick**  
Single candle holder with betty lamp on three splayed legs. 16"h x 8"w  
**200 – 300**

❖ 3186  
**Figural Torchere**  
Blackamoor style lamp stand. 41"h x 14.5"w  
**300 – 500**

❖ 3187  
**Chinese Polychrome Foo Lion Censer**  
Porcelain foo lion in the form of a censer with removable head. 10.5"h x 7.5"w x 11"d  
**300 – 500**

❖ 3188  
**French Regulator Clock**  
Bronze case decorated with Corinthian columns and festoons, signed works. 13.5"h x 9.5"w x 6"d  
**300 – 500**

❖ 3189  
**Pietro Floriani Violin**  
Label reads "Pietro Floriani 1858 Riva Benacense". 4/4 two-piece back with a high belly, newly strung, 23.5"l with hard case.  
**8000 – 12000**

❖ 3190  
**Majolica Vases**  
Figural vases of Moor children. 11.5"h x 4.5"w x 4"d  
**300 – 500**

❖ 3191  
**Marius Hammer Plique-a-Jour Bowl**  
Sterling silver and enamel bowl. Initialed. 3.5"h x 6.5"w x 4.5"d  
**300 – 500**

3189



3190



3191





## DECORATIVE

❖ 3192

### Chinese Craquel Glaze Vase

Black lotus flower overlay decoration on white ground. 5.5"h x 4"round

200 – 300



3192

❖ 3193

### Late 19th c. Regina Music Box

Mahogany case with brass plate marked, "Regina 63854". Single comb with one disc. In working condition. 10"h x 17"w x 15"d

500 – 800



3193

❖ 3194

### 1935-1943 WPA Hernando Cortes Sculpted Figure

WPA Museum Extension Project, NJ. Plaque reads, "Hernando Cortes (Spanish 1485-1547) Explorer of Mexico". Historically dressed figure with an oak glass case. 18"h

200 – 400

❖ 3195

### Eastman Kodak Century 7A Studio Camera

With an Eastman Kodak No. 1 Semi-Centennial Stand. Mahogany case with a cast iron base, and velvet pull over cover. Bellows movement and shutter are in working condition. Taylor-Hobson lens. 50"h x 33"w x 30.5"d

500 – 800

❖ 3196

### Leaded Stain Glass Window

Floral and fruit centerpiece. 32"h x 54.5"w

100 – 200

3194



3195

3196



## FURNITURE



❖ 3197

### David Rittenhouse Pennsylvania Tall Case Clock

Norriton, PA. Mahogany case with flat bonnet top, hood pillars over an arched door and base on ogee bracket feet. 8 day works with a convex medallion and a brass, figural and dolphin ormolu mounted, and moon phase dial with seconds hand. Inscribed in door. 94"h x 22"w x 12"d

20000 – 30000







3198

3199

3200

3201

3202

❖ 3198

**Jacob Godshalk Towamencin Pennsylvania Tall Case Clock**

Walnut case with a shell carved glass door on a dovetailed base with shaped feet. 30 hour movement with a brass ormolu mounted dial. 86"h x 23"w x 12"d

**4000 – 6000**

❖ 3199

**Regina Tall Case Chime Clock**

Mahogany case with urn, bell flower, and sprig marquetry. Reeded hood and quarter columns on a base with paw feet. 8 day works with a brass, ormolu mounted, and moon phase dial with a Regina music chime player playing six airs on each disc. 90"h x 24"w x 16"d

**3000 – 5000**

❖ 3200

**Henry Gotshalk Tall Case Clock**

Mahogany case with the bonnet having a broken arch pediment, flamed finials, shell and sprig carved motif, reeded quarter columns on a gadrooned base with ball and claw feet. 30 hour works with a brass and figural ormolu mounted dial. 91"h x 22"w x 13"d

**4000 – 6000**

❖ 3201

**Thomas Roberts Tall Case Clock**

Easton, PA. Cherry wood case with the bonnet having a broken arch pediment and urn finials, shell carved door on a plinth base and turned feet. 8 day works with a hand painted seascape dial with seconds hand. Signed "Tho Roberts Easton" on dial. 89"h x 20"w x 10"d

**1500 – 2500**

❖ 3202

**David Weatherly Philadelphia Tall Case Clock**

Mahogany case with a broken arch pediment, barley twist hood columns over a flamed mahogany door and base on turned legs. 8 day movement with a paint decorated floral motif dial. Marked, "David Weatherly Philada" on dial. 90"h x 20.5"w x 10"d

**1000 – 2000**

## FURNITURE



❖ 3203

### **Sarouk Hand Knotted Area Rug**

Geometric floral medallion flanked by two smaller medallions in a salmon field with a navy blue and floral main border. 4'3"w x 6'8"l

**300 – 500**



❖ 3205

### **Georgian Style Burl-Walnut Secretary**

Broken arch pediment with a brass urn finial, two doors over a slant front desk with an elmwood compartment fitted interior over two over two drawers on shaped feet, 95"h x 38"w x 33"d (open)

**800 – 1200**

❖ 3206

### **Afshar Hand Knotted Area Rug**

Large multi-Floral medallion with two smaller medallions in a floral cream field with a navy blue repeating diamond and foliate man border. 4'2"w x 6'4"l

**300 – 500**



❖ 3204

### **French Ormolu Mounted Bookcase**

Mahogany with a marble top, two festoon mounted drawers over two doors with fruit and foliate mounts, fluted apron on bun feet, 48"h x 55"w x 17"d

**500 – 700**







❖ 3207  
**Pennsylvania Dutch Cupboard**

Pine with a molded cornice, two glazed doors over two drawers over two doors on shaped bracket feet. 80"h x 56"w x 20"d  
**500 – 700**



❖ 3208  
**Mitchell and Rammelsberg Walnut Curio Corner Cabinet**

Two piece, with top section having two glazed doors with uneven bird's eye tiered bounded shelving over two glazed bar doors with carved urn and fluted columns. 78"h x 36"w x 23"d  
**800 – 1200**

❖ 3209  
**Victorian Center Table**

Mahogany with a marquetry musical motif centerpiece surrounded by four bird's eye maple veneered and sprig marquetry top. Inlay and ebonized frieze and base with swept legs conforming to block and turn stretchers. 29"h x 38"w x 24.5"d  
**1000 – 1500**



❖ 3210  
**New York Victorian Walnut Marble Top Occasional Table**

Serpentine ear top with carved frieze on c-scroll dolphin and acanthus legs on casters. 30"h x 38"w x 30"d  
**800 – 1200**



## FURNITURE



❖ 3211  
**Persian Hand  
Knotted Room Size  
Rug**

Double Geometric and shield medallion in a salmon and ivory field with directional spandrels in a repeating tribal pattern and light blue main border.  
7'10"w x 10'4"l

**300 – 500**

❖ 3213  
**Pennsylvania Chippendale  
Walnut Tall Chest**

Dovetail top with three over two over four graduated fan inlaid drawers on ogee bracket feet.  
61"h x 43.5"w x 22.5"d

**600 – 900**



❖ 3212  
**RJ Horner Carved  
Oak Serpentine  
Front China Cabinet**

Foliate and fan carved arched top with molded cornice. Capital and twisted columns with a shaped carved apron on scrolled feet and casters.  
76"h x 48"w x 18"d

**1500 – 2500**



❖ 3214  
**Trolley Bench**

Wrought iron frame with an oak pierced splat and seat. Swivel back for forward and rear facing.  
32"h x 81"w x 15"d

**300 – 500**



❖ 3215  
**Southampton Inlaid and Veneered Demilune Table**

Fan inlay with banded mahogany inlay with burl-wood veneer highlights with one drawer on tapered mahogany legs. 31"h x 45"w x 19"d

**100 – 300**



❖ 3217  
**Mahogany Veneered and Ormolu Mounted Sideboard**

Mirrored backsplash with a marble top, Lin's head and floral mounts, three drawers over three doors on tapered legs. 58"h x 47"w x 18"d

**400 – 600**

❖ 3216  
**Mahogany Veneered and Ormolu Mounted Wardrobe**

Sea scroll mounted top with a cornucopia and bell flower mounted mirrored center door flanked by two burl-wood veneer and mounted doors on turned tapered and mounted feet. 87"h x 77"w x 22"d

**400 – 600**



❖ 3218  
**Victorian Splayed Leg Piano Stool**

Elm with a burl crest, swivel seat, turned legs on mounted claw and glass ball feet. 34"h x 15"w x 16"d

**200 – 300**





## FURNITURE



❖ 3219  
**Isfahan Hand Knotted Area Rug**  
 Diamond floral central medallion in a blossoming floral and ivory field with multi-color shaped spandrels, and repeating floral navy blue man border.  
 4'4" w x 6'8" l  
**200 – 400**



❖ 3221  
**Victorian Eastlake Walnut Bookcase**  
 Twisted and molded backplash with abacus style and reeded columns, three sliding floral and foliate doors over three drawers on shaped feet.  
 67" h x 72" w x 16" d  
**1000 – 2000**



❖ 3222  
**Cast Iron Relief Fire Back**  
 Inscribed, "DAS BESSE NICH THOMAS POTS 1758" on front with star and tulip motifs.  
 23" h x 22.5" w  
**200 – 400**

❖ 3220  
**Persian Hand Knotted Palace Carpet**  
 Square rosette and vine medallion in a burgundy, floral and vine field with repeating floral borders.  
 12' w x 18' l  
**1200 – 1800**







❖ 3223

**George Nakashima Walnut Freeform Coffee Table**

Nakashima Studios, New Hope, PA. Retains original purchase receipt. Figural walnut top with one cut-out slab leg with two tapered legs. 16"h x 99"w x 36"d

**6000 – 9000**



❖ 3224

**T.H. Robsjohn-Gibbings for Saridis of Athens**

Trapeza Table. Olive wood with a circular top and three hooved legs. Labeled on underside. 25"h x 24"round

**1000 – 2000**

❖ 3225

**T.H. Robsjohn-Gibbings for Saridis of Athens**

(3) Klismos Chairs. Olive wood with leather mesh seats and saber legs. Labeled on underside. 35"h x 21"w x 18"d

**2000 – 4000**



## FURNITURE

❖ 3226

### Joseph J. Greenberg "Symbol of Progress" Coffee Table

The brass welded base of the coffee table represents Greenberg's steel sculpture "The Symbol of Progress", a large sculpture which stands in the plaza of the Bethlehem Public Library in Bethlehem, PA. The sculpture symbolizes the integration of nationalities within our American society. Glass top, 15"h x 48"w x 24"d

500 – 1000

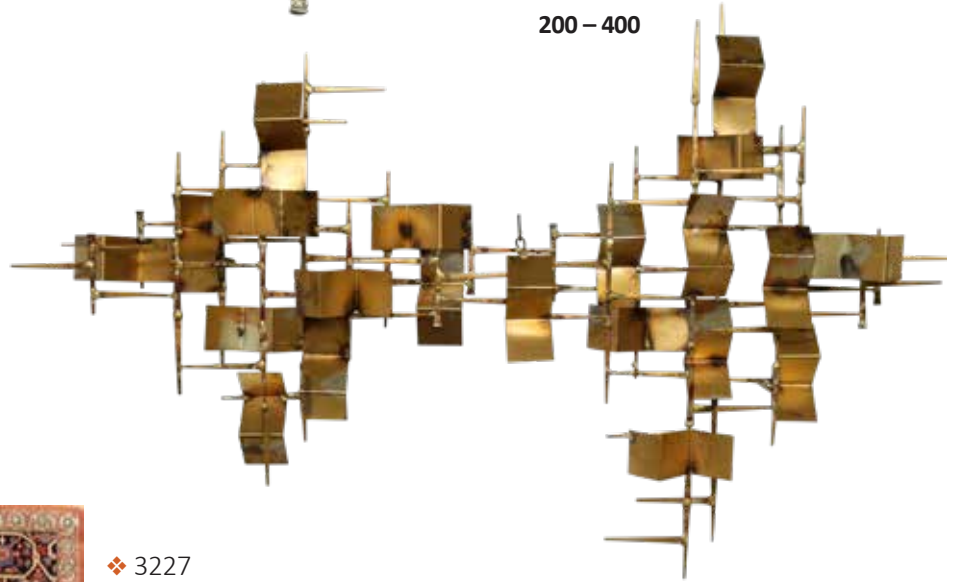


❖ 3228

### Mid-Century Modern William Bowie Sculpture

Signed. Gilt metal welded geometric pattern design. 48"h x 28"w

200 – 400



❖ 3227

### Heriz Hand Knotted Room Size Rug

Repeating tribal medallions in an orange field with a navy blue repeating floral and vine main border. 9'w x 11'9"l

300 – 500



❖ 3229

### Pair of Barcelona Chairs

Chrome frames with leather strap supports and faux leather back and seat. 30"h x 31"w x 20"d

400 – 600





❖ 3230  
**Paul McCobb for Lane  
 Mid-Century Modern  
 Chest**

Walnut with two drawers  
 over two doors with fitted  
 interior on straight legs.  
 45"h x 42"w x 18"d  
**300 – 500**



❖ 3233  
**Eames for Herman  
 Miller Wire Chair**

Plum faux leather seat and  
 back with splayed legs.  
 32"h x 19"w x 14"d  
**100 – 200**



❖ 3231  
**Modern Coffee Table  
 by Flair**

Walnut, circular top with  
 a wood slotted base.  
 16"h x 36"round  
**100 – 300**

❖ 3232  
**Paul McCobb for Lane Mid-Century Modern  
 Side Table**

Walnut, two tiered with a glass square top over  
 a wicker lattice shelf on oval legs. 22"h x 26"w  
**200 – 300**



❖ 3234  
**Tabriz Hand Knotted Room Size Rug**

Diamond floral medallion with a repeating pattern  
 in a burgundy field and a tribal pattern main border.  
 9'10"w x 13'l  
**500 – 700**

## FURNITURE



❖ 3235

### Sarouk Hand Knotted Area Rug

All over floral medallion and main border in a burgundy field with a repeating figural inner border. 6'4" w x 8'7" l

400 – 600

❖ 3236

### Mid-Century Modern Credenza

Walnut with four doors. 25" h x 66" w x 19" d

300 – 500



❖ 3237

### Pair of Charles Eames LCW Chairs

Calico ash molded plywood on tapered legs. 27" h x 22" w x 18" d

500 – 800

❖ 3238

### Abel Sorenson for Knoll Mid-Century Modern Chairs

Set of (4) chairs with birch frames and upholstered seats and backs. Labeled Knoll Associates on underside. (1) Armchair, 33" h x 24" w x 16" d, (3) Side Chairs, 33" h x 18" w x 16" d

400 – 800







❖ 3241

**Paul McCobb for Lane Mid-Century Etagere**

Walnut with four shelves over four drawers over six drawers flanked by two doors on straight legs. 78"h x 60"w x 16"d

**400 – 600**



❖ 3239

**Paul McCobb for Lane Mid-Century Modern Dresser**

Walnut with mirror, dovetailed joinery top over two doors flanked by four drawers on straight legs. Dresser 32"h x 72"w x 18"d, Mirror 39"h x 36"w

**400 – 600**



❖ 3240

**Paul McCobb for Lane Mid-Century Modern Bedroom Suite**

Walnut consisting of (1) Headboard, 36"h x 61"w. (2) Night stands, 24"h x 24"w x 21"d

**400 – 600**

## FURNITURE

❖ 3242

### Charles Eames for Herman Miller ESU Desk and Return

Birchwood tops with red,  
white and blue lacquered  
panels, five drawers  
on a chrome frame.

29"h x 60"w x 72"d

800 – 1200



❖ 3243

### Nordisk Andels-Eksport Danish Teak Dresser

Double dresser with two flanking sets of four  
drawers. 31"h x 72"w x 19"d

200 – 400



❖ 3244

### Mid-Century Modern Sideboard

Walnut with step-down four door  
shelved top over two drawers over five  
doors. 90"h x 74"w x 18"d

400 – 600







❖ 3245

**Dakota Jackson Desk**

Santos rosewood and sycamore lacquered veneers. Glass top with an arched center flanked by leather side tops with six drawers. 29"h x 72"w x 28"d

**600 – 900**



❖ 3246

**Mario Botta Quarta Chair**

Aluminum angular design with a polyurethane backrest. 29"h x 38"w x 24.5"d

**300 – 500**



❖ 3247

**Dakota Jackson Plum Leather Loveseat**

Armless with a rolled back and curvature seating. 36"h x 60"w x 32"d

**400 – 600**

FINE ART



3248



3249



3250



3251



3252

❖ 3248

**Aristide-Onesime Croisy (1840 - 1899)**

Bronze, "Le Nid - The Nest", Featured: Bronze Sculptors Founders, Vol. 4 by Harold Berman, pg 1153. 6.5"h x 5.25"square

**800 – 1200**

❖ 3249

**Paul Ludwig Kowalczewski (1865 - 1910)**

Bronze, "The Frog Prince" Signed. Figural bronze of a scene from the fairy tale. Featured: Bronze Sculptors & Founders, Vol. 4 by Harold Berman, pg 1018. 12.5"h x 3.75"w x 7.5"d

**400 – 600**

❖ 3250

**Spiro Schwatenberg (1898 - 1922)**

Bronze, "Balanced Ball" signed. Nude female with a ball. 12.25"h x 3.25"square including base

**400 – 600**

❖ 3251

**Figural Bronze Sculpture**

Bronze, "Fury" Featured: Bronze Sculptors Founders, Vol. 4 by Harold Berman, pg 989.

7.75"h x 4.75"w x 3.25"d

**200 – 300**



3253



3254



3255

❖ 3252

**Carl Kauba  
(1865 - 1922)**

Bronze, "Vide Poche",  
signed. Female nude standing  
over a pool of water.  
5.25"h x 7"w x 5"d

**300 – 500**

❖ 3253

**Charles Hargens  
(1893 - 1997)**

Oil on canvas, illustration for  
the cover of the book  
"Wes of Abilene" by Vinge Roe.  
Published 1951. SLL.

**2000 – 3000**

❖ 3254

**John Berninger  
(1897 - 1981)**

Oil on canvas board, "Road  
in the Parkway", SLL. Autumn  
landscape. 16"h x 20"w and  
23.5"h x 27.5"w framed

**1000 – 2000**

❖ 3255

**Franz Jozef  
(1927 - 2004)**

Oil on canvas, "23rd Century  
Abacus" (Pentamerous  
Version), SLR. Surreal still-life.  
24"h x 30"w and 27"h x 33"w  
framed

**800 – 1200**



FINE ART



3256



3257



3258

❖ 3256

**Carl Philipp Weber  
(1849 - 1922)**

Oil on canvas, SLR. Coastal landscape with rocky beach, fishing village and ships. 20" h x 36" w and 31" h x 48" w framed

**1000 – 2000**

❖ 3257

**Svend Danelund  
(born 1916)**

Oil on canvas, "Rum", signed, dated and titled en verso. Interior scene. 43" h x 34" w and 45" h x 35" w framed

**500 – 800**

❖ 3258

**Japanese Bronze Tiger**

Meiji period, signed, glass eyes. 16.25" h x 33" w x 9.5" d

**2000 – 3000**

❖ 3259

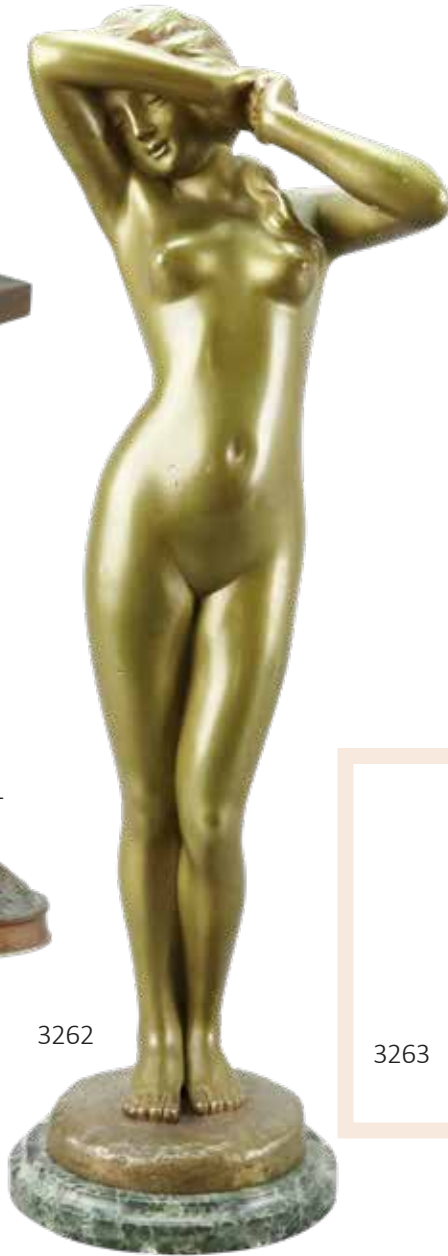
**Figural Bronze Sculpture**

Bronze, Urania – (Muse of Astronomy) Featured: Bronze Sculptors Founders, Vol. 4 by Harold Berman, pg 898. 7.5" h x 3.25" w x 4.25" d

**300 – 500**



3259



3262



3260



3261



3263

❖ 3260

**Wilhelm Barth  
(Early 20th c.)**

Bronze, "Three Wishes – for one small favor", Featured: Bronze Sculptors Founders, Vol. 4 by Harold Berman, pg 1011. 7.25"h x 9"w x 6.25"d

**300 – 500**

❖ 3261

**Hans Muller  
(1873 - 1937)**

Bronze, "Der Schwan Nacken" Featured: Bronze Sculptors Founders, Vol. 4 by Harold Berman, pg 990. 8.5"h x 9.5"w x 4.5"d

**500 – 800**

❖ 3262

**Figural Bronze Sculpture**

Bronze, "Trial of Phryne" signed H. Poirier. Featured: Bronze Sculptors Founders, Vol. 4 by Harold Berman, pg 1063. 10"h x 3.25"w x 2.75"d

**500 – 800**

❖ 3263

**Charles Hargens  
(1893 - 1997)**

Oil on canvas, illustration for the cover of the book "Six Gun Sheriff" by Roy Manning, 1946. 24.5"h x 20.5"w and 31.5"h x 27.5"w framed

**2000 – 3000**

## FINE ART



3264



3265



3266



3267

❖ 3264

**William Jachwak  
(born 1954)**

Oil on canvas, "Stover Mill, Pipersville, PA", SLR. Impressionist winter landscape. 16"h x 20"w and 21"h x 25"w framed

**400 – 600**

❖ 3265

**Harry Leith-Ross  
(1886 - 1973)**

Watercolor, Pastoral Landscape. Provenance: Estate of the artist through descent to his daughter Bunny. 18"h x 24"w and 21"h x 26"w framed

**500 – 800**

❖ 3266

**Frederick De Voll  
(1873 - 1941)**

Oil on canvas board, "The Dockworkers, NY Waterfront", SLR. Retains partial label for the Salmagundi Club en verso. 8"h x 10"w and 10.5"h x 12.5"w framed

**2000 – 3000**

❖ 3267

**Harry Leith-Ross  
(1886 - 1973)**

Watercolor, SLR. Harbor scene with lighthouse. 11.5"h x 17"w sight and 21"h x 26.5"w framed

**1000 – 2000**





3268



3269



3271

❖ 3268

**Eugène Laurent (1832 - 1898)**

Bronze, "Psyche".  
8.5"h x 6"w x 3.75"d

**500 – 800**

❖ 3269

**S. Schnalberg (20th c.)**

Bronze, "The Spinner",  
Featured: Bronze Sculptors  
Founders, Vol. 4  
by Harold Berman, pg 1088.  
7.75"h x 3.5"w x 3.5"d

**300 – 500**



3272

❖ 3270

**Figural Bronze Sculpture**

Bronze, depicts a sleeping  
Bacchus. 4"h x 8"w x 4.5"d

**400 – 600**

❖ 3271

**Andreas Ruff**

Bronze, "Shepherd Serenity"  
Featured: Bronze Sculptors  
Founders, Vol. 4 by Harold  
Berman, pg 1137.  
9.5"h x 4"w x 6"d

**300 – 500**

❖ 3272

**Figural Bronze Sculpture**

Bronze, "Icarus - Son of  
Daedalus" Featured: Bronze  
Sculptors Founders, Vol. 4  
by Harold Berman, pg 1108.  
8"h x 10.25"w x 9"d

**400 – 600**



3270

FINE ART



3273



3274



3275

❖ 3273

**Charles Hargens (1893 - 1997)**

Oil on board, illustration for the cover of the book "Long Lope to Lander" by Allan Vaughan Elston, 1954. 11.5"h x 15.5"w and 22"h x 25.5"w framed

**2000 – 3000**

❖ 3276

**Ranulph Bye (1916 - 2003)**

Watercolor, "Back Street, Frenchtown, NJ", SLR. Urban landscape. 9.5"h x 13.5"w and 18"h x 22"w framed

**300 – 500**

❖ 3274

**Mark King (1931 - 2014)**

Oil on canvas, "Rhododendron Way", SLR and titled en verso. 18"h x 24"w and 20"h x 26"w framed

**300 – 500**

❖ 3277

**Ranulph Bye (1916 - 2003)**

Watercolor, "Flower Barrel, Beech Glen, PA", SLR. Rural landscape. 13"h x 21"w and 22"h x 29.5"w

**300 – 500**

❖ 3275

**Ranulph Bye (1916 - 2003)**

Watercolor, "Old Bridge and Willow" Sheards Mill bridge Tohickon creek, near Thatcher. 1965. SLR. 20.5"h x 28"w and 29"h x 37.5"w framed

**500 – 800**



3276



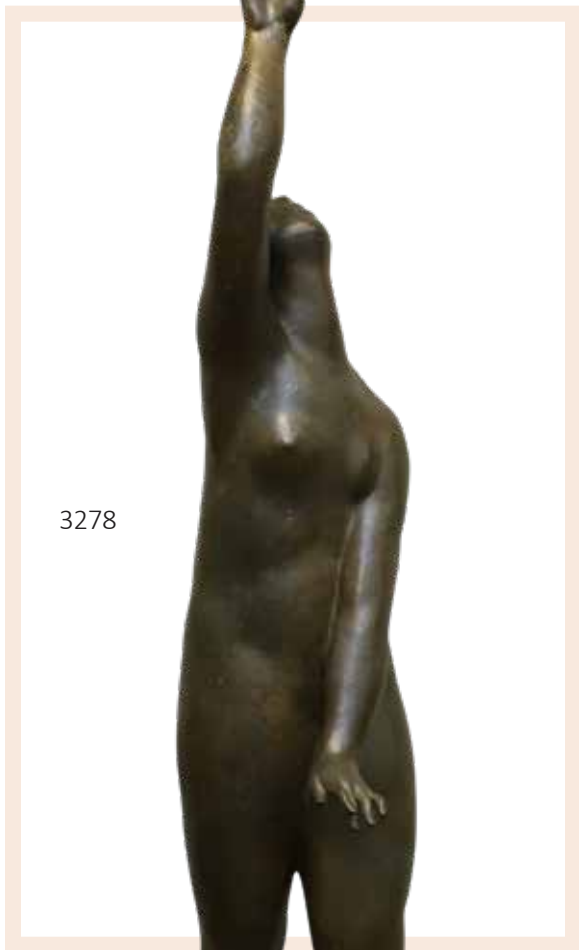
3277

**About Joseph Greenberg**

Figural forms, stone carvings of animals and abstract shapes make up the diverse catalogue of work by the prolific artist Joseph Greenberg of Philadelphia, PA. Though many of his pieces did not make their way to market, those that did are famously displayed in locations throughout Philadelphia and the surrounding area. His black granite bear with cub is a well-known fixture at the Philadelphia Zoo. But, according to the artist, his favorite sculpture is that of the 60 feet-high welded steel 'Symbol of Progress' created in 1967, located in the heart of Bethlehem, PA. This piece is meant to stand as a symbol of various ethnic groups on which the city is based, moving upward to show the integration of the people of Bethlehem, then progressing skyward as they are strengthened by their diverse beginnings and their subsequent meetings.



3279



3278



3280

❖ 3278

**Joseph J. Greenberg Jr. (1915 - 1991)**

Bronze, "Eve", signed and dated. Won 4th place in the 1951 Metropolitan Museum of Art Sculpture competition. 55.5"h x 15"w x 8"d

**2000 – 3000**

❖ 3280

**Joseph J. Greenberg Jr. (1915 - 1991)**

Fiberglass and epoxy, "Adam and Eve". 73.5"h x 20"w x 17"d

**800 – 1200**

❖ 3279

**Joseph J. Greenberg Jr. (1915 - 1991)**

Fiberglass and epoxy, reclining female nude. 20.5"h x 40"w x 14"d

**600 – 900**



## FINE ART



3281



3282

3283



3284



❖ 3281

**Joseph J. Greenberg Jr.  
(1915 - 1991)**

Fiberglass and Epoxy,  
"Pregnant Female".  
65.5"h x 10.5"w x 9"w

**500 – 800**

❖ 3282

**Joseph J. Greenberg Jr.  
(1915 - 1991)**

Fiberglass and epoxy,  
"Europa and the bull".  
7.75"h x 8.5"w x 5.25"d

**300 – 500**

❖ 3283

**Fern Isabel Kuns Coppedge  
(1883 - 1951)**

Oil on canvas, "First Snow", SLL.  
Winter landscape. Newman  
Galleries tag and restoration  
notes en verso. 14"h x 13"w  
and 20"h x 19"w framed

**15000 – 25000**

❖ 3284

**Bass Otis  
(1784 - 1861)**

Oil on poplar panel, "Benedict  
J. Heard", unsigned with pencil  
inscription en verso. Portrait of  
a gentleman. 12.5"h x 10.25"w  
and 15.5"h x 13.5"w framed

**1000 – 2000**

❖ 3285

**W.H. Newby  
(20th c.)**

Oil on board, "Restin" Line,  
SDLL. Landscape with Native  
Americans resting their horses.  
20"h x 30"w and  
31.5"h x 41.5"w framed

**300 – 500**

❖ 3286

**George Newman  
(1875 - 1965)**

Oil on board, "A Perkiomen  
Memory". Impressionist  
landscape of a covered bridge.  
18"h x 24"w and  
21.5H x 27.5"w framed

**300 – 500**

3285



3286

3289



3287



3288

3290



❖ 3287

**Bernard Badura  
(1896 - 1986)**

Hand carved and incised gold leaf frame. Signed and dated 1951. Rabbit 15"h x 21.25"w and 19.5"h x 26"w

**500 – 800**

❖ 3289

**Rudolf Kuchler  
(1867 - 1954)**

Bronze, "Barefoot Dancer". Featured: Bronze Sculptors Founders, Vol. 4 by Harold Berman, pg 1079. 12.5"h x 5"w x 4.25"d

**300 – 500**

❖ 3288

**Jean Garnier  
(1853 - 1910)**

Bronze, "Fortuna". 10.5"h x 5"w x 4"d

**400 – 600**

❖ 3290

**Figural Bronze Sculpture**

Bronze, art nouveau female nude. 9.5"h x 2.5"square

**300 – 500**

# FINE ART

❖ 3291

**Hermann Eichberg  
(19/20th c.)**

Bronze, depicts a seated Pan of Rohallion. 9.5"h x 5"square

**400 – 600**

❖ 3292

**Figural Bronze Sculpture**

Bronze, "Baby High", Signed J. Koca. Featured: Bronze Sculptors Founders, Vol. 4 by Harold Berman, pg 964-5. 9"h x 9.25"w x 4"d

**300 – 500**

❖ 3293

**Christopher Willett  
(born 1959)**

Oil on board, "N.Y. Flat Iron Building, NY City", SLR and en verso. 6"h x 5"w and 7.5"h x 6.5"w framed

**400 – 600**

❖ 3294

**Christopher Willett  
(born 1959)**

Oil on board, "NY", SLR. Winter urban landscape. 5"h x 5"w and 6.5"h x 6.5"w framed

**400 – 600**

❖ 3295

**Christopher Willett  
(born 1959)**

Oil on board, "Plumbstead Bucks County PA Studio", SLR and en verso. Winter evening landscape. 4"h x 5"w and 5.5"h x 6.5"w framed

**300 – 500**

3291



3292



3293



3294



3295



3296



3297



❖ 3296

**Christopher Willett (born 1959)**

Oil on board, "Sunset - Hilltown Bucks County PA", SLR and en verso. Pastoral landscape at sunset. 5"h x 6"w and 6.5"h x 7.5"w framed

400 – 600

❖ 3297

**Christopher Willett (born 1959)**

Oil on board, "Lower WH. Rd. Buckingham PA Bucks County", SLR and en verso. Evening winter landscape. 5"h x 5"w and 8.75"w x 8.75"h framed

400 – 600



3298



3300



3299

3301



3302

❖ 3298

**Wayne Forbes (20th c.)**

Wood carving, Surreal figural carving. 78.5"h x 25"w x 25"d

1000 – 2000

❖ 3299

**Wayne Forbes (20th c.)**

Wood carving, "Clonal triad" Surreal figural sculpture. 57"h x 24"w x 24"d

1000 – 2000

❖ 3300

**Wayne Forbes (20th c.)**

Wood carving, "Anima Genesis" Surreal figural sculpture. 29"h x 50"w x 40"d

1000 – 2000

❖ 3301

**Wayne Forbes (20th c.)**

Wood carving, "Transform 1" Surreal figural sculpture. 69.5"h x 23.5"w x 26.5"d

1000 – 2000

❖ 3302

**Wayne Forbes (20th c.)**

Latex and neon, "Reliquary". 32"h x 25"w x 14"d

500 – 800

**About Wayne Forbes**

Impacted largely by the journey of losing both of his kidneys, the renowned art of Wayne Forbes spans dimensions and mediums with works done in pen and ink, sculptures created from wood, metal, latex, ceramic and plaster, as well as, a few pieces produced in colored markers. An artist for as long as he can remember, Forbes went from carving pieces with his Grandfather's pocket knife to teaching sculpture at Illinois Central College, Peoria, Illinois. The process of dialysis brought him to a halt for 90 minutes, four times a day, creating a space for him to return his attention to his two-dimensional art. He created a drawing ritual for himself that was a part of his healing, as well as, creative process. The question of "What do you do with those that do not turn out properly?" is a theme that presents itself throughout many of his creations, as evidenced in their multiple limbs and other features not always correct in number or placement.

FINE ART

3303



❖ 3303

**William "Bill" Gollings  
(1878 - 1932)**

Oil on canvas, "The Fear of the Great Spirit", 1912. SDLR. A striking landscape of a chief restraining a warrior from ambushing a priest.

24"h x 34"w and 29.5"h x 39.5"w framed

**8000 – 12000**

3304



❖ 3304

**Thomas Sully  
(1783 - 1872)**

Oil on canvas, "Portrait of Mary Ann Heide Norris", 1830, initialed and dated en verso. Portrait of a young woman.

30"h x 24.5"w and 34.5"h x 28.5"w framed

**1000 – 2000**



3305



3306



3307



3309



3308



3310



3311

❖ 3305

**Adolf Sehring  
(born 1930)**

Oil on board. 30"h x 40"w  
and 48"h x 38"w framed

**400 – 600**

❖ 3306

**Adolf Sehring  
(born 1930)**

Oil on board, SLR. Landscape  
with a girl picking flowers  
by a stream. 40"h x 30"w and  
45"h x 34.5"w framed

**400 – 600**

❖ 3307

**Daniel Garber  
(1880 - 1958)**

Etching, "Heron", pencil signed.  
6.5"h x 7.5"w and 14.5"h x  
14.5"w framed

**500 – 800**

❖ 3308

**Paul Philippe  
(1870 - 1930)**

Mixed media, "Radha". Art  
deco cold painted bronze on  
onyx plinth. 15"h x 7"w x 6"d

**2000 – 3000**

❖ 3309

**Nogami Ryuki  
(1865-1932)**

Silver model of mirogame,  
the mythical turtle with a  
long, feathery tail, its head  
turned slightly to the left, the  
details finely cast, signed on  
the underside with chiseled  
characters and inscription  
"1st Lt. Robert I weil,  
Forget me Not, Chai".  
1"h x 4.5"w x 4"d

**3000 – 5000**

❖ 3310

**Frederic-Auguste Bartholdi  
(1834 - 1904)**

Bronze. 4.75"h x 1.75"w x 2.5"d

**300 – 500**

❖ 3311

**Theophile Somme  
(1871 - 1952)**

Bronze, "Julia" Featured:  
Bronze Sculptors Founders,  
Vol. 4 by Harold Berman,  
pg 985. 7"h x 6.5"w x 4.25"d

**500 – 800**



## FINE ART

❖ 3312

**Karl Kowalczewski  
(1876 - 1927)**

Bronze, "Eve and Snake"  
Featured: Bronze Sculptors  
Founders, Vol. 4 by Harold  
Berman, pg 1092. 14.75"h x  
7.5"w x 4.25"d including base  
**400 – 600**

❖ 3313

**John Fabian Carlson  
(1874/75 - 1945)**

Oil on canvas, "Silent Glades",  
SLR and en verso. Evening  
landscape. 16"h x 20"w and  
25.5"h x 29.5"w framed  
**5000 – 8000**

❖ 3314

**Anthony Michael Autorino  
(1937 - 2015)**

Oil on canvas, "Rainy Day Gray  
Canal" 2002. SLR and titled en  
verso. Landscape of a stream.  
34"h x 38"w and 42"h x 46"w  
framed  
**1000 – 2000**

❖ 3315

**Fred Carpenter  
(1882 - 1965)**

Oil on board, "Joy", SLL.  
17.5"h x 14"w sight and  
20.25"h x 17"w framed  
**400 – 600**

❖ 3316

**Oil on Canvas**

Unsigned, Victorian parlor  
scene. 36"h x 30"w and  
48"h x 41"w framed  
**300 – 500**

❖ 3317

**Walter Emerson Baum  
(1884 - 1956)**

24"h x 35"w 27"h x 38.5"w  
framed  
**1000 – 2000**

❖ 3318

**Salvatore Monaco  
(1909 - 1989)**

Bronze, "Nudo Femmine".  
52"h x 12"w x 12"d  
**800 – 1200**

❖ 3319

**Figural Bronze Sculpture**

Bronze, art nouveau style  
fairy with toadstools.  
18.75"h x 7.75"round  
**500 – 800**

❖ 3320

**Eugene Bourgoin  
(1880 - 1924)**

Bronze, "Femme a la colombe",  
cast by Susse Freres, Paris.  
6.25"h x 7.75"w x 3.25"d  
**300 – 500**



3312



3313



3314



3315



3318



3316



3319



3320



3317



FINE ART



3321



3324



3322



3325



3323

❖ 3321

**Otto Rasmussen (born 1845)**

Bronze, depicts an Amazon warrior on horseback. 11"h x 9.25"w x 3.5"d

**400 – 600**

❖ 3323

**Walter Emerson Baum (1884 - 1956)**

Oil on board, "Winter Afternoon", SLR. Winter landscape. 4"h x 6"w and 4.5"h x 6.5"w framed

**800 – 1200**

❖ 3325

**Hans Hogendoorn (born 1946)**

Oil on canvas, "The Musicians", SLR. Impressionist still life of musicians. 78"h x 64"w and 80"h x 66"w framed

**1000 – 2000**

❖ 3327

**Isabel Parke Branson Cartwright (1885 - 1966)**

Oil on canvas, SLL. European landscape. 30"h x 30"w and 34.5"h x 34.5"w framed

**500 – 800**

❖ 3322

**Figural Bronze Inkwell**

Bronze, "Dutch Fisherman". Featured: Bronze Sculptors Founders, Vol. 4 by Harold Berman, pg 864. 8"h x 11.75"w x 6.75"d

**300 – 500**

❖ 3324

**Romain (Erte) De Tirtoff (1892 - 1990)**

Serigraph, "Swept Away" pencil signed LR, 38/300. Art deco styled lady being swept by the wind. 27.5"h x 19"w sight, 41"h x 32"w framed

**300 – 500**

❖ 3326

**Harriette Bowdoin (1880 - 1947)**

Oil on canvas, SLR. Impressionist garden scene. 24"h x 20"w and 27"h x 23"w framed

**400 – 600**

❖ 3328

**Joseph J Greenberg Jr (1915 - 1991)**

Osage orange and ebony, figural mask. 18"h x 18"w x 8"d

**300 – 500**





3326



3327

❖ 3329  
**Joseph J Greenberg Jr (1915 - 1991)**  
Mahogany and ebony, spiked sculpture.  
18"h x 14"w x 10.25"d  
**300 – 500**

❖ 3330  
**Joseph J Greenberg Jr (1915 - 1991)**  
Osage orange, figural mask.  
12.5"h x 8"w x 6.5"d  
**300 – 500**

❖ 3331  
**Joseph J Greenberg Jr (1915 - 1991)**  
Mahogany, spire sculpture.  
14.5"h x 3"w x 7"d  
**300 – 500**

❖ 3332  
**Joseph J Greenberg Jr (1915 - 1991)**  
Lignum vitae, nude female torso.  
12.5"h x 5"w x 4"d  
**300 – 500**



3328

3330



3329



3331



3332

FINE ART

3333



3336

3334



3337

3335



❖ 3333

**Joseph J Greenberg Jr  
(1915 - 1991)**

Wood, eagle head carving.  
10"h x 15.5"w x 11"d

**300 – 500**

❖ 3335

**Peter Sculthorpe  
(born 1948)**

Watercolor. "A Long Wait for  
Spring", SDLR and en verso.  
Winter landscape. 16"h x  
24.5"w and 25.5"h x 33.5"w  
framed

**500 – 800**

❖ 3334

**Andrew Woehrel  
(born 1958)**

Oil on board, "For Cynthia" SLR  
and dated en verso. Pastoral  
landscape. 20"h x 16"w and  
25"h x 20"w framed

**1000 – 1500**

❖ 3336

**Helen Johnson  
(born 1906)**

Oil on canvas, SLR. Still life  
with semi nude male.  
40"h x 48"w and 41"h x 49"w  
framed

**600 – 900**





3339

3338



3340



3341



3342



3343



3344

❖ 3337  
**Will Barnett (1918 - 1992)**  
 Oil on canvas, SLL. Modernist still life. 50"h x 60"w and 51"h x 61"w framed  
**1000 – 2000**

❖ 3339  
**Figural Bronze Sculpture**  
 Bronze, "Le Caire - Lady of Cairo". Featured: Bronze Sculptors Founders, Vol. 4 by Harold Berman, pg 985. 21"h x 11"w x 7.5"d  
**1000 – 2000**

❖ 3341  
**Figural Bronze Sculpture**  
 Bronze, "Togetherness" Featured: Bronze Sculptors Founders, Vol. 4 by Harold Berman, pg 1020. 4.75"h x 2.75"round  
**300 – 500**

❖ 3343  
**Ernst Geier-Fecit (19th c.)**  
 Bronze, "Troubadour Toasting" Featured: Bronze Sculptors Founders, Vol. 4 by Harold Berman, pg 1081. 6"h x 4"w x 2.5"d  
**300 – 500**

❖ 3338  
**Jean Halter (1916 - 1981)**  
 Oil on canvas, SLR. Rural farm landscape. 24"h x 36"w and 31"h x 43"w framed  
**2000 – 3000**

❖ 3340  
**Figural Bronze Sculpture**  
 Bronze, Bust of a young boy, cast by Barbedienne Foundry and has reduction mecanique a collas brevete seal. 6.5"h x 3.25"w x 2.75"d  
**500 – 800**

❖ 3342  
**Figural Bronze Box**  
 Bronze, Austrian, art nouveau style with a satyr. 6"h x 5.5"w x 3.25"d  
**300 – 500**

❖ 3344  
**Figural Bronze Sculpture**  
 Bronze, depicts a Black Forest style bear with top hat and backpack. 5.5"h x 4.75"w x 3.5"d  
**300 – 500**



FINE ART

3345



3348



3349



3346



3350

3347



3351



3352



3353



3354

❖ 3345

**Figural Bronze Sculptures**

Bronze, "Court Musicians".  
Featured: Bronze Sculptors  
Founders, Vol. 4 by Harold  
Berman, pg 1081.  
6.25"h x 2.75"round

**300 – 500**

❖ 3346

**Figural Bronze Sculpture**

Silver plated bronze, art  
nouveau style reclining nude.  
4.5"h x 7.25"w x 3.5"d

**300 – 500**

❖ 3347

**Figural Bronze Sculpture**

Bronze, depicts a young  
mourning boy and his horse,  
cast by Aktien-Gesellschaft  
Gladenbeck Friedrichschlagen.  
5.25"h x 5.25"w x 2.25"d

**300 – 500**

❖ 3348

**Eugene Barillot  
(1841 - 1900)**

Bronze, depicts  
a young Bacchus.  
7.25"h x 2.75"w x 2.5"d

**300 – 500**

❖ 3349

**Christopher Willett  
(born 1959)**

"Ferry Road to River Point  
Pleasant, Bucks County, PA".  
4.25"h x 10"w and 6"h x 12"w  
framed

**400 – 600**

❖ 3350

**Christopher Willett  
(born 1959)**

Oil on board, "New Hope, PA  
Bucks County PA", SLL and  
en verso. Winter evening  
landscape. 4.25"h x 5"w and  
5.25"h x 6"w framed

**400 – 600**

❖ 3351

**Christopher Willett  
(born 1959)**

Oil on board, "Tincum Bucks  
County, PA", SLR and en verso.  
Evening winter landscape.  
4.25"h x 5"w and 5.75"h x  
6.75"w

**400 – 600**

❖ 3352

**Christopher Willett  
(born 1959)**

Oil on board, "River Road above  
New Hope PA, Bucks County",  
SLR and en verso. Winter  
landscape. 4.25"h x 10"w and  
5.75"h x 11.5"w framed

**500 – 800**

❖ 3353

**Christopher Willett  
(born 1959)**

Oil on board, "Tincum Bucks  
County Pa", SLR and en verso.  
Winter landscape.  
4.25"h x 10"w and  
5.75"h x 11.5"w framed

**500 – 800**

❖ 3354

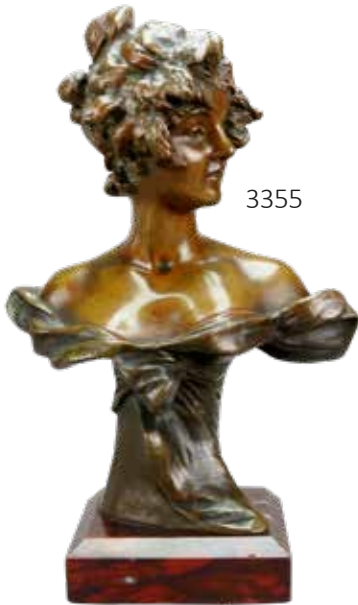
**Henri Godet  
(1863 - 1937)**

Bronze, "Femme-Fleur" or  
"Blossoming". Featured: Bronze  
Sculptors Founders, Vol. 3  
by Harold Berman, pg 609.  
8.75"h x 5.75"w x 3"d

**400 – 600**



FINE ART



3355



3358



3360



3359



3357



3356

❖ 3355  
**Georges van der Straeten (1856 - 1928)**  
 Bronze, "Betty", cast by Alberto Vignes, Buenos Aires.  
 8.75"h x 5.75"w x 3"d  
**300 – 500**

❖ 3357  
**Oscar Waldmann (1856 - 1937)**  
 Bronze, depicts a perched ram.  
 8.75"h x 5.5"w x 3.25"d  
**300 – 500**

❖ 3359  
**Jean Garnier (1853 - 1910)**  
 Bronze, bust of a young girl.  
 7"h x 4"w x 2.75"d  
**400 – 600**

❖ 3360  
**Figural Bronze Sculpture**  
 Bronze, "Enchanted Cobra"  
 Featured: Bronze Sculptors Founders, Vol. 4 by Harold Berman, pg 1083.  
 9"h x 1.5"w x 3.25"d  
**300 – 500**

❖ 3356  
**Animalier Bronze Inkwell**  
 Bronze, Rooster with twigs.  
 6.25"h x 7"w x 4.25"d  
**300 – 500**

❖ 3358  
**Josef Maratka (1874 - 1937)**  
 Bronze, "Eva".  
 4.25"h x 3.25"w x 3.5"d  
**300 – 500**





3361



3362



3364



3363



3365

❖ 3361  
**Gustav Heinrich Eberlein  
(1847 - 1926)**

Bronze, "Psych" Cast by Aktien-Gesellschaft Gladenbeck & Sonn.  
13.25"h x 4.5"w x 5.5"d  
**800 – 1200**

❖ 3363  
**Cold Painted Bronze Sculpture**

Bronze, diorama with birds, flora and lizard.  
12.5"h x 9"w x 12.5"d  
**300 – 500**

❖ 3364  
**Harold James Cleworth  
(born 1935)**

Oil on canvas, "Porsche 911SC" SCLR. Automobile still life.  
35"h x 47"w and 37"h x 49"w framed  
**2000 – 3000**

❖ 3365  
**James Sword  
(1839 - 1915)**

Watercolor, SLL. Coastal landscape.  
12.75"h x 18.5"w sight  
**300 – 500**

❖ 3362  
**Figural Bronze Sculpture**

Bronze, Art nouveau figural nude. 9.75"h x 3.5"w x 3"d  
**400 – 600**

## FINE ART

❖ 3366

**Ludwig Knaus  
(1829 - 1910)**

Oil on canvas, SLL. Portrait of a girl training a dog. 27"h x 34"w and 35"h x 42.5"w framed

**2000 – 4000**

❖ 3367

**Joseph Barrett  
(born 1936)**

Oil on canvas, "Winter Nocturn: Lamaska", SLR. Twilight landscape. 14"h x 16"w and 20.5"h x 22"w framed

**3000 – 5000**

❖ 3368

**Frank Swift Chase  
(1886 - 1958)**

Oil on canvas, SLL. Pastoral landscape with cows. 30"h x 32"w

**3000 – 5000**

❖ 3369

**Colin Barclay (20th c.)**

Oil on linen, "Round Mountain and Ripley's Neck". 20"h x 42"w and 29"h x 51"w framed

**600 – 900**

❖ 3370

**Jules Lafrance  
(1841 - 1881)**

Bronze, "Jean Baptiste - Enfant", cast by Susse Freres. Featured: Bronze Sculptors Founders, Vol. 3 by Harold Berman, pg 686. 10.5"h x 3.75"w x 4"w

**500 – 800**

❖ 3371

**Figural Bronze Sculpture**

Bronze, "Miss Piggyback" Signed. Featured: Bronze Sculptors Founders, Vol. 4 by Harold Berman, pg 963. 10.25"h x 3"w x 5.5"d

**300 – 500**

❖ 3372

**Figural Bronze Sculpture**

Bronze, "A fish is hooked", signed illegibly, Featured: Bronze Sculptors Founders, Vol. 4 by Harold Berman, pg 956. 13.5"h x 4.25"w x 4.5"d

**300 – 500**

❖ 3373

**Robert Tait McKenzie  
(1867 - 1938)**

Bronze, from the competitor series. 9.5"h x 4"w x 3.5"d

**3000 – 5000**

❖ 3374

**Marie Rolle  
(1865 - 1942)**

Bronze, "Bacchante", Foundry: HK Vrai Bronze in Paris. Featured: Bronze Sculptors Founders, Vol. 4 by Harold Berman, pg 985. 10.25"h x 5.5"w x 4"d

**500 – 800**

❖ 3375

**Auguste Puttemans  
(1866 - 1927)**

Bronze, depicts a semi-nude female. 10"h x 5.25"w x 5.5"d

**500 – 800**



3366



3367



3368



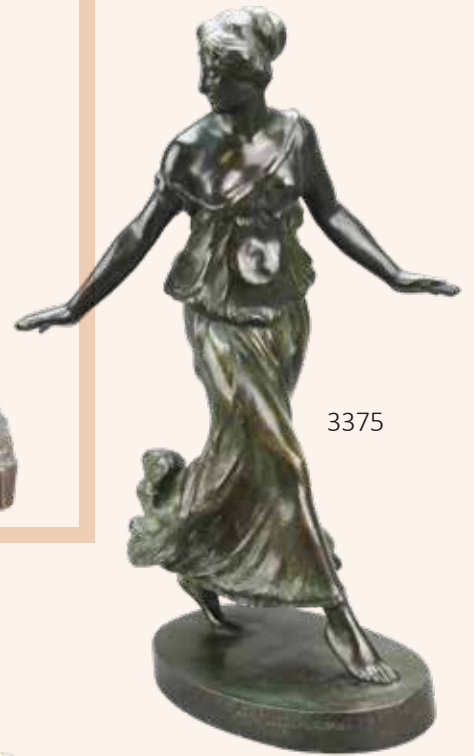
3369



3370



3373



3375



3371



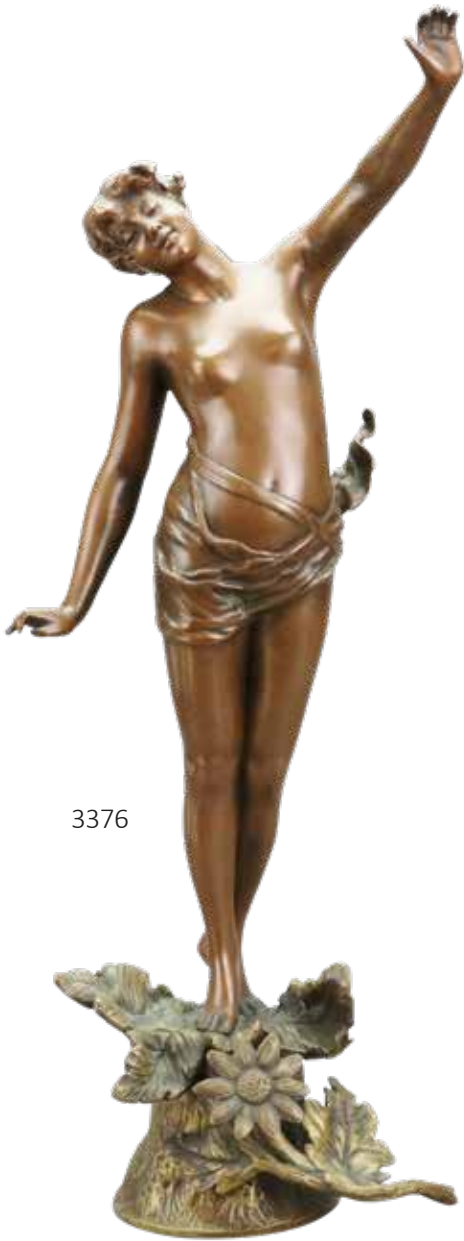
3372



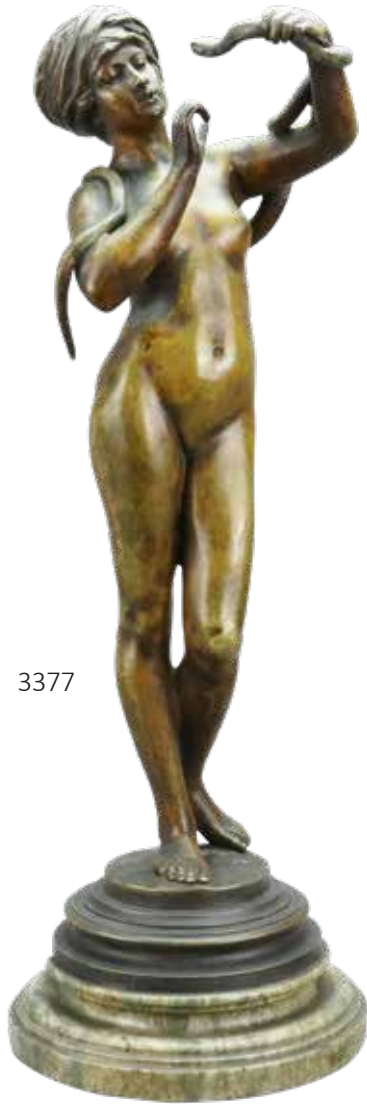
3374



FINE ART



3376



3377



3378



3379

❖ 3376

**Franz Rosse  
(1858 - 1900)**

Bronze, "Papillon" Featured:  
Bronze Sculptors Founders,  
Vol. 4 by Harold Berman,  
pg 1107. 13.5"h x 5.25"w x 5"d

**800 – 1200**

❖ 3377

**Figural Bronze Sculpture**

Bronze, depicts a nude  
female snake charmer.  
13.75"h x 4.75"round

**300 – 500**

❖ 3378

**Figural Bronze Sculpture**

Bronze, bust of a male in  
classical style, Italian.  
11.5"h x 4.5"w x 4"d

**300 – 500**

❖ 3379

**Walter Schulze-Thewis  
(born 1872)**

Bronze, "Athena".  
11.75"h x 9.75"w x 3.5"d

**500 – 800**



3380



3381



3382



3383

❖ 3380

**Hans Muller  
(1873 - 1937)**

Bronze, "Diana", Featured:  
Bronze Sculptors Founders, Vol.  
4 by Harold Berman, pg 984.  
10"h x 4.75"w x 2.75"d

**400 – 600**

❖ 3381

**Alfred Grevin  
(1827 - 1892)**

Bronze, "Calling Girl - Ho He"  
Featured: Bronze Sculptors  
Founders, Vol. 4 by Harold  
Berman, pg 1095.  
19.5"h x 6.5"w x 5"d

**500 – 800**

❖ 3382

**Figural Bronze Sculpture**

Bronze, art nouveau style  
female nude laying on stone.  
10.25"h x 17.5"w x 5.5"d

**300 – 500**

❖ 3383

**Ercole Drei  
(1886 - 1973)**

Bronze, Art nouveau  
style female nude.  
20"h x 23"w x 10"d

**600 – 900**

## FINE ART

❖ 3384

**Georges van der Straeten  
(1856 - 1928)**

Bronze, "Felicia" Cast by Societe des Bronzes des Paris. Bronze Sculptors Founders, Vol. 4 by Harold Berman, pg 991. 19"h x 9.5"w x 9"d

**500 – 800**

❖ 3385

**Georges Flamad  
(1895 - 1925)**

Bronze, "Sleeping Lily". Featured: Bronze Sculptors Founders, Vol. 4 by Harold Berman, pg 1014. 21"h x 10"w x 5.5"d

**300 – 500**

❖ 3386

**Victor Heinrich Seifert  
(1870 - 1953)**

Bronze, "Fisherwoman". 21"h x 6.25"w x 11"d

**500 – 800**

❖ 3387

**Francois Gaston Coudray  
(19th c.)**

Bronze, "Palace Guardian", Foundry: Societe des Bronzes de Paris. Featured: Bronze Sculptors Founders, Vol. 4 by Harold Berman, pg 949. 15.5"h x 5.5"w x 5"d

**500 – 800**

❖ 3388

**Figural Bronze Sculpture**

Bronze, depicts a farmer with a cow and haystack. 6"h x 9.5"w x 6"d

**300 – 500**

❖ 3389

**Figural Bronze Sculpture**

Bronze, "Ward". Featured: Bronze Sculptors Founders, Vol. 3 by Harold Berman, pg 763. 20.25"h x 9"w x 7"d

**600 – 900**

❖ 3390

**Figural Bronze Sculpture**

Bronze, depicts a mermaid on the shoulders of a merman. 8.25"h x 5.5"w x 4.25"d

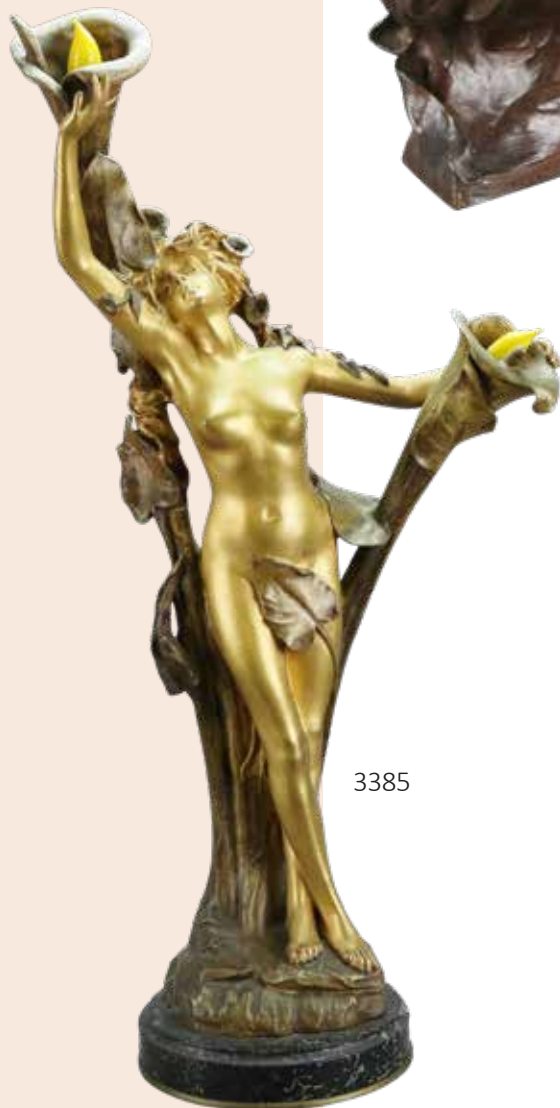
**300 – 500**

❖ 3391

**Figural Bronze Sculptures**

Bronze, grouping of (3) figural statues of children, one signed Grundmann. Tallest 5.75"h

**300 – 500**



3385



3384



3386





3387



3389



3390



3388



3391



# Terms & Conditions of Sale

Alderfer Auction, 501 Fairgrounds Road, Hatfield, PA 19440. 215.393.3000

Buyers must register for a bidding number by giving name, address, phone number, and identification acceptable to us. Please show your bidding number to the auctioneer after each purchase you make.

The highest bidder shall be the buyer, and if any dispute arises between two or more bidders, the auctioneer shall decide the buyer or immediately put the item up for sale again. In the event of a tie between online bidder and the floor bidder, the floor bidder will take precedence. The auctioneer's decision will be binding and final.

Some lots are offered subject to a reserve, which is a confidential minimum price below which such a lot will not be sold.

The record of sale, kept by the auctioneer and clerk, will be taken as absolute and final in all disputes.

Catalog Auctions will include a Buyer's Premium of 20% with a 3% discount if paid with cash or acceptable check. Acceptable forms of payment for all in-house purchases are cash, bank check, AmEx, Visa, MasterCard, Discover and PayPal. For online bidders, the Buyer's Premium is 25%. Discounts do not apply to online purchases regardless of the form of payment.

Items purchased may be removed once payment is made. All items purchased by in-house bidders should be removed on the day of the auction. Online buyers who wish to pick up their purchases shall not do so until the Monday following the day of the auction.

Storage fees for any items left at the Auction Center for more than two weeks following the auction date will incur storage fees at a rate of \$10.00 per lot, per week regardless of the size or value of the lot. Storage fees will begin on the 15th day regardless of payment status.

Abandoned merchandise of unpaid items still remaining at our Auction Center 30 calendar days after the auction date will be considered abandoned and will be consigned to a future auction without additional notice to the purchaser.

Announcements made day of Auction take precedence over printed, electronic and verbal communication.

## Absentee/Phone Bids

For those unable to attend the auction, Alderfer Auction offers the absentee and phone bid services as a convenience to our patrons.

- Everyone leaving an absentee/phone bid must be willing to leave their credit card number to assure payment of a successful bid(s) is received by the end of the next day following an auction.
- Minimum absentee bid is \$50.00. All bids will open at \$50.00.
- Phone bids will open at \$250 or half of published estimate.
- Illegible bid(s) will be disregarded.
- Applicable sales tax will be added to the sales total unless a tax-exempt number is on file in our office by the day of the auction.
- Applicable Buyer's Premium will be added to each purchase.
- All successful bid(s) requested to be shipped to the buyer will be sent by an in-house or third party shipper and billed by the shipper.
- Buyer is responsible to make shipping arrangements.

- Bids are executed in competition with the audience on an alternate basis. Due to uncertainties of bidding, a lot may sell to the

audience for the same amount authorized by the absentee bid. To avoid this possibility, the absentee bidder may authorize Alderfer Auction to increase their bid by one increment by placing a (+) sign beside the bid price.

- Merchandise is to be removed from the Auction Center within two weeks following the auction.
- **Storage fees:** Any items left at the auction center for more than two weeks following the auction date will incur storage fees at a rate of \$10.00 per lot, per week regardless of the size or value of the lot. Storage fees will begin on the 15th day regardless of payment status
- Alderfer Auction offers the absentee/phone bid service as a convenience to our patrons who are unable to attend the auction.
- Alderfer Auction will not be held responsible for error or failure to execute the bid.
- All items are sold as is without warranty or guarantee.

## Glossary of Terms

If we say "circa" a certain date, then it was made within 25 years of that date.

Measurements are given within 1" of actual size.

If we say "no defects observed", we mean that upon visual inspection we saw no defects.

## Authorship\*

Name of Artist – Indicates the work, in our best judgment, is by the named artist. \*There is no guarantee the work is by the named artist.

Attributed to\* - In our best judgment, the work may be by the artist.

Circle of \* - In our best judgment, the work may be by the artist and closely related to the artist's style.

School of \* - In our best judgment, a work by a pupil or follower of the artist.

In our best judgment, a copy of the known work of the artist.

In the manner of \* - This painting represents the style of the names artist but was painted at a later date; the authorship is unknown.

## Signature

The signature, inscriptions and dates are transcribed in print as they appear and are located as follows:

SLL: Signed Lower Left

SLR: Signed Lower Right

SUL: Signed Upper Left

SUR: Signed Upper Right

SLC: Signed Lower Corner

SUC: Signed Upper Corner

If we state "signed" in our opinion, the signature is of the named artist.

If we state "bears signature" in our opinion, the signature might be that of the artist, but we make no guarantee that work is by the named artist.

WAF = With All Faults

## For Furniture

If we say "Chippendale Mahogany Chest of Drawers," we represent that the piece was made during that period.

If we say "Chippendale Style Mahogany Chest of Drawers," we represent that the piece looks like the period mentioned, but it was crafted at a later date.

## Bid Increment Table

Minimum Dollar Amount Maximum Dollar Amount Bid Increment

from US \$0 to US \$49 US \$5

from US \$50 to US \$199 US \$10

from US \$200 to US \$499 US \$25

from US \$500 to US \$999 US \$50

from US \$1,000 to US \$1,999 US \$100

from US \$2,000 to US \$4,999 US \$250

from US \$5,000 to US \$9,999 US \$500

from US \$10,000 to US \$19,999 US \$1,000

from US \$20,000 to US \$49,999 US \$2,500

from US \$50,000 to US \$99,999 US \$5,000

from US \$100,000 to and above Auctioneer's Discretion

Variations from the bid Increment Table are at the discretion of the auctioneer.

## Directions & Lodging

Free shuttle service from Lansdale Train Station available. Call Alderfer's for details. 24 hour notice required.

## From PA Turnpike

Take Exit 31 "Lansdale" off 476. Left on Rt. 63 (Sumneytown Pike). Left at light (Forty Foot Rd). 3 miles to Clemens Rd. Left on Clemens Rd. Right on Fairgrounds Rd.

## From Philadelphia

Rt. 309 North to Montgomeryville. Left on Rt. 463 (Cowpath Rd). 4 miles to Fairgrounds Rd. Left on Fairgrounds Rd.

## From Allentown

Rt. 309 South to Souderton. Exit (Rt. 113). Right on Board Street. 3 miles to Cowpath Rd. Left on Cowpath Rd. approx. 2 miles to Fairgrounds Rd. Right on Fairgrounds Rd.

## Lodging:

Holiday Inn

1750 Sumneytown Pike

Route 63 & PA Turnpike

Kulpsville, PA 19443

215.368-3800

Marriot Courtyard

1737 Sumneytown Pike

Route 63 & PA Turnpike

Lansdale, PA 19446

Joseph Ambler Inn

Bed & Breakfast

105 Horsham Road

Montgomeryville, PA 18936

215-362-7500

**Absentee bids welcome and can be viewed & submitted at AlderferAuction.com**







3325

Hans Hogendoorn  
"The Musicians"

**[AlderferAuction.com](http://AlderferAuction.com)** | [FineArt@AlderferAuction.com](mailto:FineArt@AlderferAuction.com)  
501 Fairgrounds Road | Hatfield, Pennsylvania 19440 | 215-393-3000

