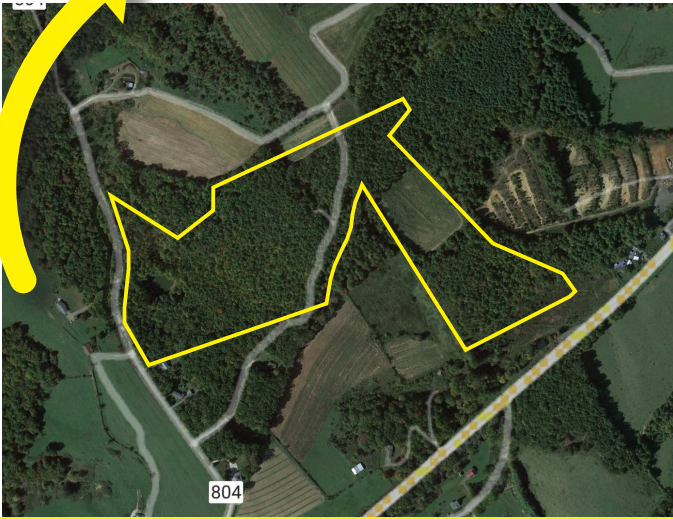


TWO AUCTIONS - ONE DAY

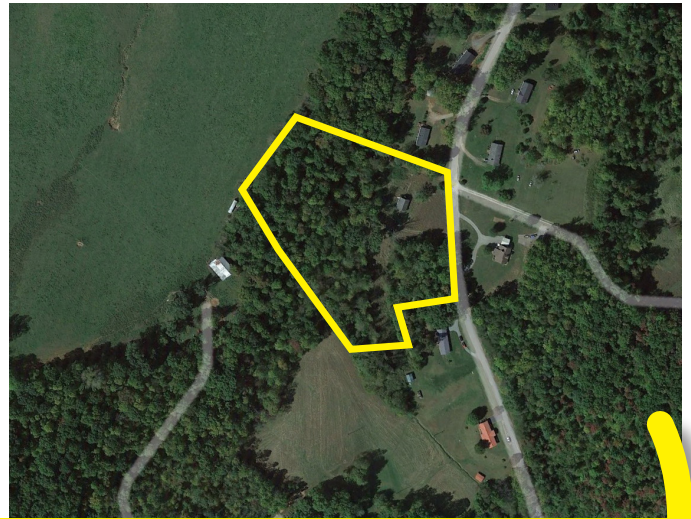
REAL ESTATE AUCTION

FRIDAY, MARCH 11TH

AUCTION 1 PROPERTY: 46± ACRES
LOGGY RIDGE RD, HILLSVILLE VA



AUCTION 1: FRI 3/11 @ 10AM



AUCTION 2: FRI 3/11 @ 1PM

AUCTION 2 PROPERTY: HOUSE ON 5± ACRES
268 HILLSIDE RD, WOOLWINE VA



THE
COUNTS

Realty & Auction Group

828 Main St, 15th Floor | Lynchburg VA 24504

Sale Managers
Pete Ramsey 434-258-6611 or
George McDaniel 434-546-9235

WWW.COUNTSAUCTION.COM



10% Buyer's Premium.

AUCTION LOCATIONS DIFFER FOR EACH AUCTION

AUCTION 1 (LOGGY RIDGE RD): Hampton Inn 90 Farmers Market Dr Hillsville VA 24343

AUCTION 2 (HILLSIDE RD) : Woolwine Fire Dept, 9912 Woolwine Hwy, Woolwine VA 24185

TWO AUCTIONS - ONE DAY **Friday March 11 @ 10AM** **REAL ESTATE AUCTION**

Auction Location : Hampton Inn 90 Farmers Market Dr Hillsville VA 24343

804

Preview Dates: Sat 2/26 and Sat 3/5 10AM - 12PM
Self-guided tours welcome

AUCTION 1: 46± ACRES
Loggy Ridge Rd Hillsville VA

Wooded with pond
Good established road
system

Ideal for
RECREATIONAL &
Multiple HOME SITES

Boundary lines are approximate

804



Terms: Buyer's Premium 10%. Also a deposit of 10% of contract price due on sale day with the balance due in about 30 days.
Directions to property: From the intersection of Rt 58 and Rt 52 in Hillsville, take Rt 52 South 3.9 miles to Loggy Ridge Rd (Rt 804). Turn right onto Loggy Ridge Rd, go 0.3 miles. The property will be on the right. Watch for the Auction signs.
Auction Location: Hampton Inn just off Rt 58 West of I-77, Exit 14

828 Main St, 15th Floor, Lynchburg VA 24504 | (434) 525-2991 | counts@countsauktion.com | VAAF93

TWO AUCTIONS - ONE DAY Friday March 11 @ 1PM ABSOLUTE TRUSTEE AUCTION

Auction Location : Woolwine Fire Dept. 9912 Woolwine Hwy, Woolwine VA 24185

Preview Dates: Sat 2/26 and Sat 3/5 1PM - 3PM

AUCTION 2: 5± ACRES + HOME
Hillside Rd Woolwine VA

3 Bedrooms

1 Bathroom

5.24± Acres

Living Room, Kitchen

Full Basement

Hardwood floors

Stream on property

Boundary lines are approximate



Terms: 10% Buyer's Premium added to the high bid. A deposit of \$5,000 in certified funds is due on sale day with the balance due in 30 days.

Directions to property: From the Woolwine Fire Dept. in Woolwine, go 1.7 miles on Rt 8 South (Woolwine Hwy) to Hillside Rd. Turn Left onto Hillside Rd, go 0.3 miles. The property will be on the right. Watch for the Auction Signs.

828 Main St, 15th Floor, Lynchburg VA 24504 | (434) 525-2991 | counts@countsauktion.com | VAAF93