

734

HAINES TWP

783

109

817

807

119

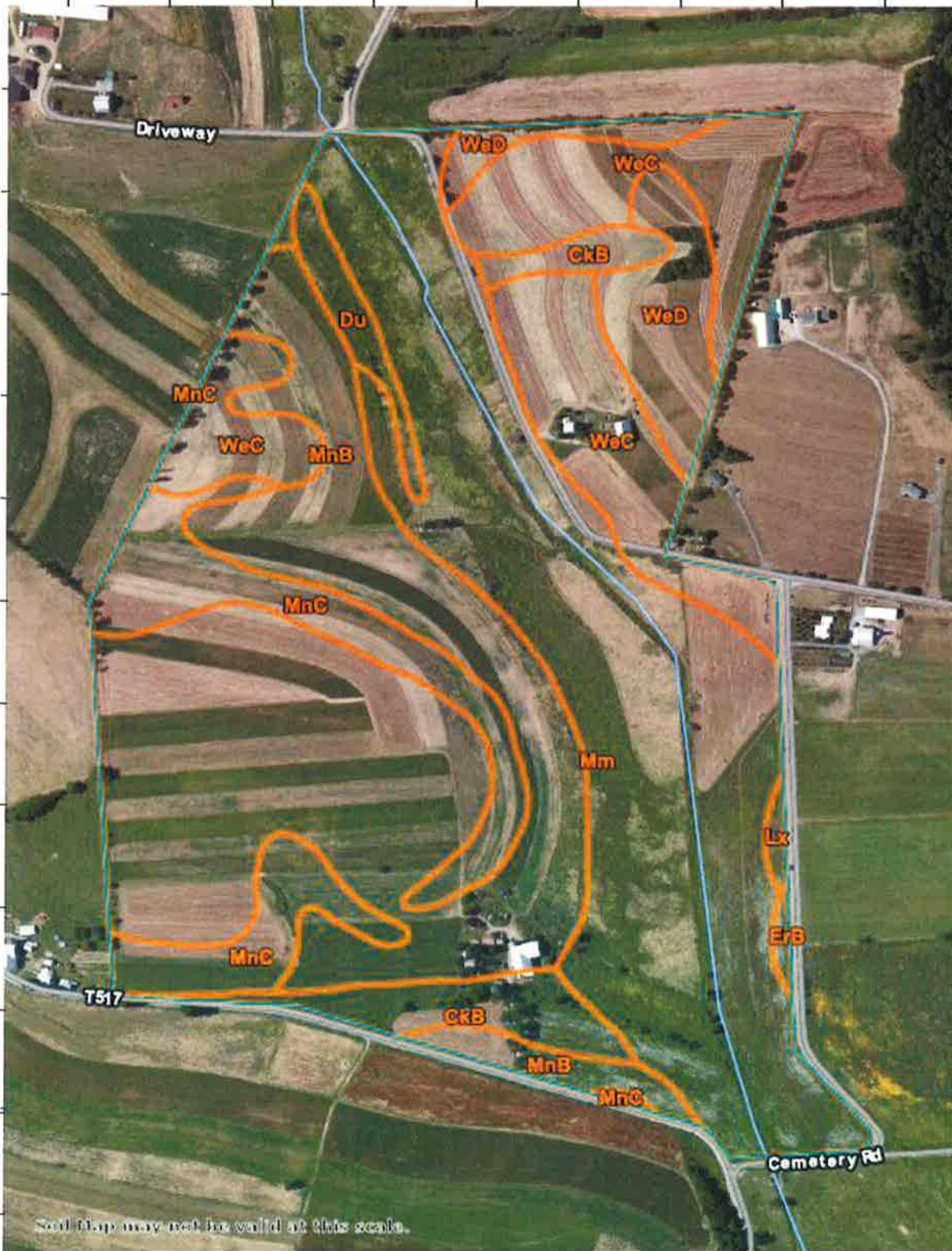
133-2

829

PARSONS LN

JACKSON HILL RD

CEMETERY RD



Soil map may not be valid at this scale.

Soil Map Legend

| Map Unit Symbol | Map Unit Name | Acres in AOI | Percent of AOI |
|------------------------------------|---|--------------|----------------|
| CkB | Clarksburg silt loam, 3 to 8 percent slopes | 5.6 | 4.1% |
| Du | Dunning silty clay loam | 2.1 | 1.5% |
| ErB | Ernest channery silt loam, 3 to 8 percent slopes | 0.3 | 0.3% |
| Lx | Lindsay soils | 0.4 | 0.3% |
| Mm | Melvin silt loam | 42.4 | 31.5% |
| MnB | Millheim silt loam, 2 to 8 percent slopes | 44.6 | 33.2% |
| MnC | Millheim silt loam, 8 to 15 percent slopes | 12.4 | 9.2% |
| WeC | Weikert shaly silt loam, 5 to 15 percent slopes | 19.7 | 14.7% |
| WeD | Weikert channery silt loam, 15 to 25 percent slopes | 7.0 | 5.2% |
| Totals for Area of Interest | | 134.4 | 100.0% |