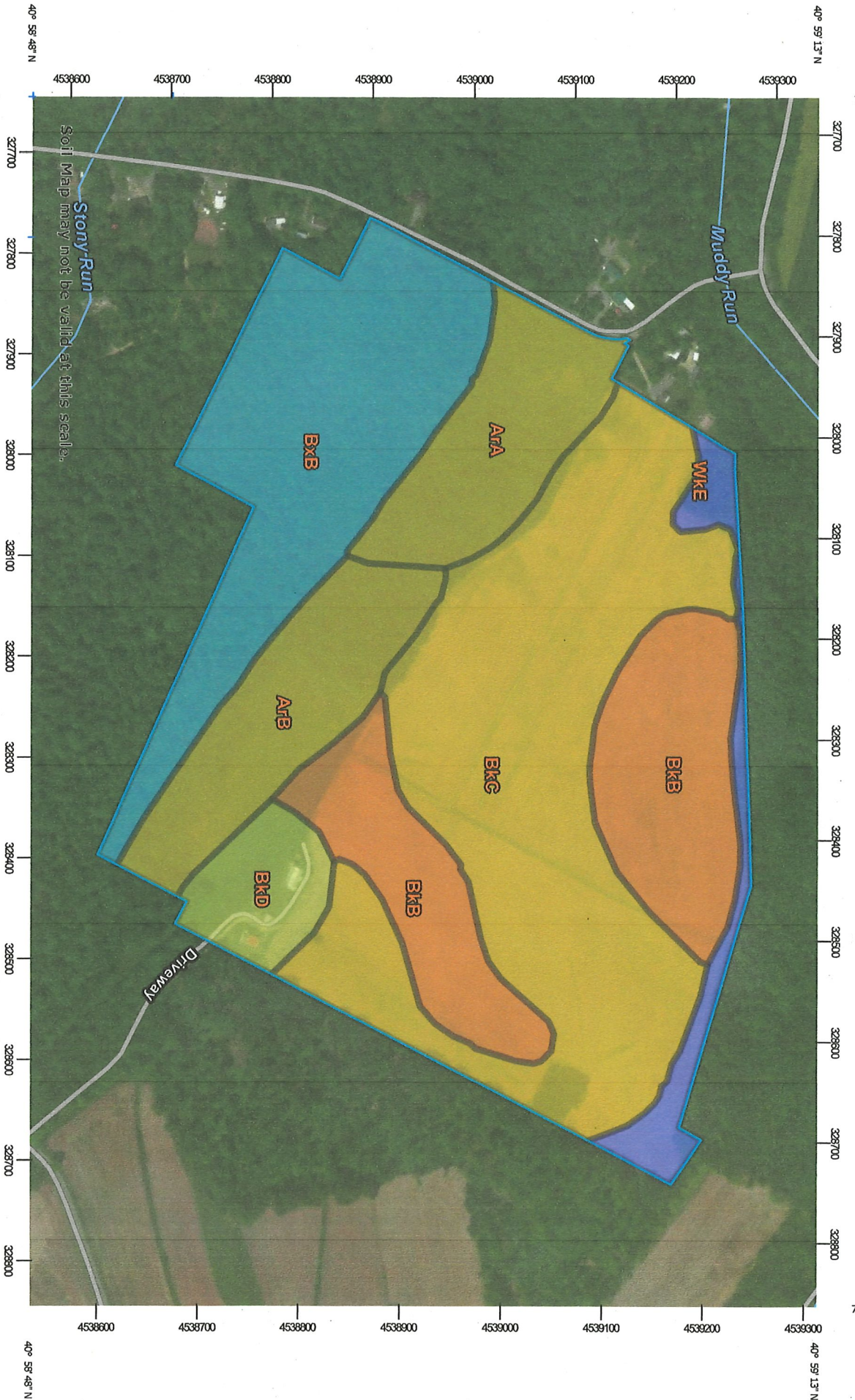


Nonirrigated Capability Class—Union County, Pennsylvania
(Hartman)



Map Scale: 1:5,490 if printed on A landscape (11" x 8.5") sheet.

0 50 100 200 300 500 1000 1500
Meters

0 250 500 1000 1500
Feet

Map projection: Web Mercator Corner coordinates: WGS84 Edge ticks: UTM Zone 18N WGS84

USDA
Natural Resources
Conservation Service

Web Soil Survey
National Cooperative Soil Survey

MAP LEGEND

- Area of Interest (AOI)
 - Area of Interest (AOI)
- Soils
 - Soil Rating Polygons**
 - Capability Class - I
 - Capability Class - II
 - Capability Class - III
 - Capability Class - IV
 - Capability Class - V
 - Capability Class - VI
 - Capability Class - VII
 - Capability Class - VIII
 - Not rated or not available
 - Soil Rating Lines**
 - Capability Class - I
 - Capability Class - II
 - Capability Class - III
 - Capability Class - IV
 - Capability Class - V
 - Capability Class - VI
 - Capability Class - VII
 - Capability Class - VIII
 - Not rated or not available
- Water Features
 - Streams and Canals
- Transportation
 - Interstate Highways
 - US Routes
 - Major Roads
 - Local Roads
 - Aerial Photography
- Background
 - Aerial Photography
- Soil Rating Points
 - Capability Class - I
 - Capability Class - II

MAP INFORMATION

The soil surveys that comprise your AOI were mapped at 1:20,000.

Warning: Soil Map may not be valid at this scale. Enlargement of maps beyond the scale of mapping can cause misunderstanding of the detail of mapping and accuracy of soil line placement. The maps do not show the small areas of contrasting soils that could have been shown at a more detailed scale.

Please rely on the bar scale on each map sheet for map measurements.

Source of Map: Natural Resources Conservation Service
 Web Soil Survey URL:
 Coordinate System: Web Mercator (EPSG:3857)

Maps from the Web Soil Survey are based on the Web Mercator projection, which preserves direction and shape but distorts distance and area. A projection that preserves area, such as the Albers equal-area conic projection, should be used if more accurate calculations of distance or area are required.

This product is generated from the USDA-NRCS certified data as of the version date(s) listed below.

Soil Survey Area: Union County, Pennsylvania
 Survey Area Data: Version 14, Jun 5, 2020

Soil map units are labeled (as space allows) for map scales 1:50,000 or larger.

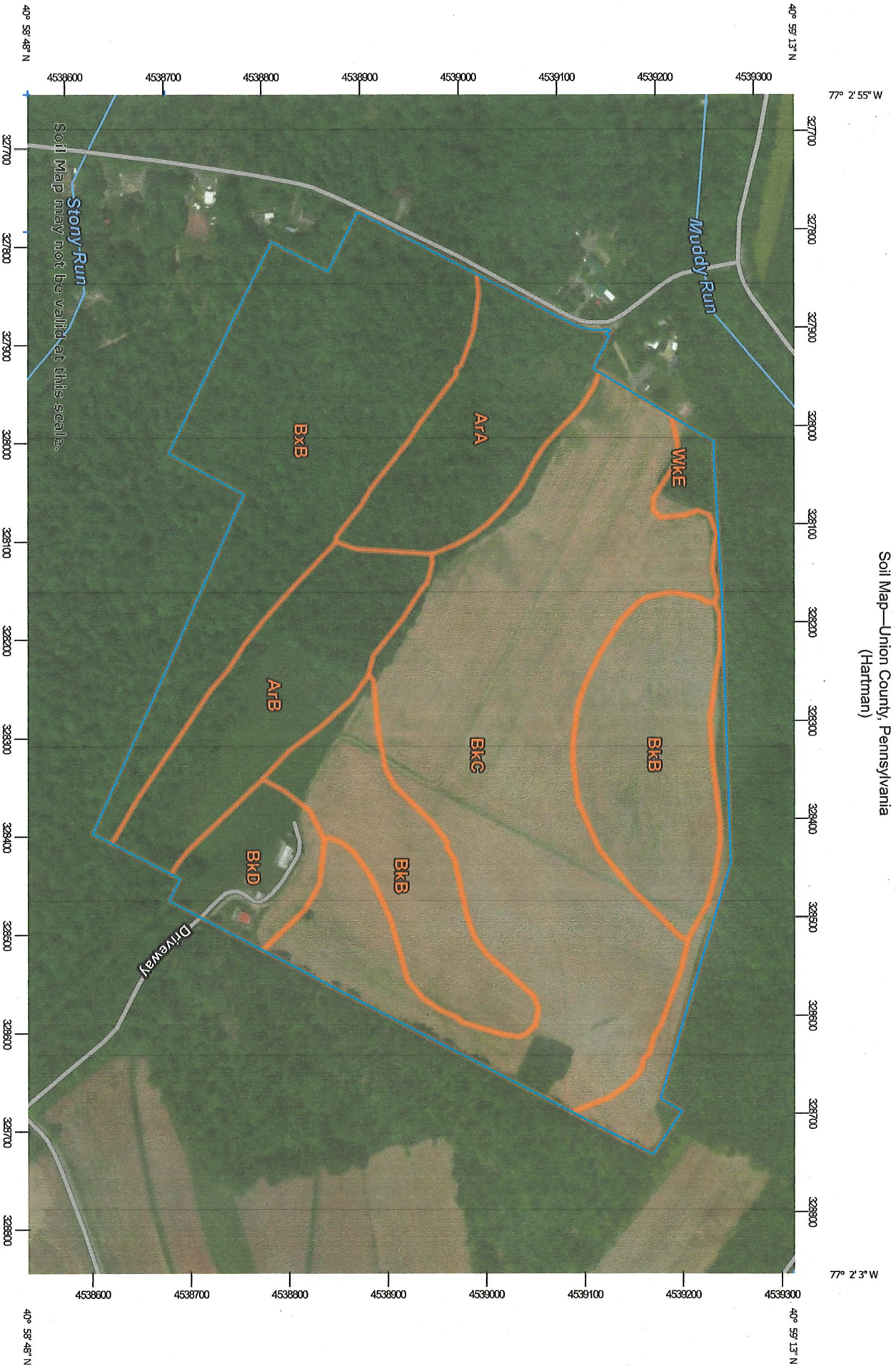
Date(s) aerial images were photographed: May 25, 2010—Nov 11, 2016

The orthophoto or other base map on which the soil lines were compiled and digitized probably differs from the background imagery displayed on these maps. As a result, some minor shifting of map unit boundaries may be evident.

Nonirrigated Capability Class

Map unit symbol	Map unit name	Rating	Acres in AOI	Percent of AOI
ARA	Alvira silt loam, 0 to 3 percent slopes	3	8.7	8.6%
ARB	Alvira silt loam, 3 to 8 percent slopes	3	9.7	9.6%
BKB	Berks channery silt loam, 3 to 8 percent slopes	2	17.6	17.4%
BKC	Berks channery silt loam, 8 to 15 percent slopes	3	36.6	36.2%
BKD	Berks channery silt loam, 15 to 25 percent slopes	4	4.2	4.2%
BXB	Buchanan channery loam, 0 to 8 percent slopes, extremely stony	6	20.3	20.1%
WKE	Weikert and Klinesville shaly silt loams, steep	7	4.0	4.0%
Totals for Area of Interest				100.0%
			101.2	

Soil Map—Union County, Pennsylvania
(Hartman)



Map Scale: 1:5,490 if printed on A landscape (11" x 8.5") sheet.

