

Saturday, September 25th at 8 a.m.

Located 1 Mile West of Lewisburg Along SR 45 Old Turnpike Rd. at 170 Salem Church Rd., Lewisburg, East Buffalo Twp., Union Co., Pa.

Tools:

Clarke HD Floor Tier Tool Box & Tools; 225 Lincoln Welder; Karcher Pressure Washer; DeWalt & B/D Elect. Palm Sander; DeWalt D51822 HD 1/2" Chargeable NIB Nail Gun; Makita LS1040 10" Skil Saw; Die Hard 1150 Portable Power 12 Volt Pack; Craftsman Reciprocating Saw; Ryobi 18V Chargeable Sawsall; Skil Router; Router Bits; Craftsman Socket Sets, Wrenches; Grinder; Elect. Drills; Milwaukee Cutter; Pittsburgh Wrenches; 2 – 21 pc. Socket/Wrench Sets; 300 amp. Schumacher Battery Charger; Stihl MM55C Rototiller; 12 gal. Charge Pro-Air Compressor; Tie Down Straps; Comealong; Dump Cart; DR Alum. Prof. Power 2 Wheel Cart; 4 – 20- Ton Hyd. Jacks; B/D Drill Bits; Mini Shop Vac; HD 5687 Skil Saw; Wrench Sets; Battery Tester; Jumper Cables; Levels; Clamps; Air Hoses; Handyman Jack; Extension Cords; Forged 24", 18", 15", 12" Adj. Wrenches; Various Hitches; Harley Davidson Screwdriver Set; Vise Grips; Handsaws; H.D. Adj. Wrenches; Hanging Pet Hanger; New Flex Air Hose Backpack Sprayer; Hammers; Hardware; #6 Duracraft Vise; 15W40 Oils; Sprayer; Fimco Sprayer; Tool Boxes; Michelin 20 Ton Jacks; Tie Down Trailer Hitches; 20+ Various Length Chain Binders & Chain; Vaughan Hatchet; Scalding Trough; Garden Cultivator; Wheelbarrow; Walnut Picker; Alum. Shovel; Cyclone Seeder; Ford & Oliver Clocks; Farmall Emblems; Dump Cart; Replacement Windows; 16' Werner Ladder; 34' Alum. Extension Ladder; 5' Alum Step Stool; 10' Gate; Oliver Modern Thermometer Tin & More.



Pedal Toy Tractors:

Farmall M NFE, 706 WFE, Farmall H NFE, Pedal City Fire Truck

Toro Zero Turn Mowers, Golf Carts & Trailers:



2020 – Toro Z-Master 6000 Series Zero Turn Mower, 72" Turbo Force Deck, 82 hrs., My Easy Ride; 2019 – Toro Z-Master 3000 Series Zero Turn Mower, 60" Turbo Force Deck, 188 hrs., My Easy Ride; **GOLF CARTS:** Yamaha Gas Golf Cart w/Rear Bench Seat & Roof; Yamaha Gas Golf Cart w/Lift Kit, Flame Design & Roof; Electric 2 Seat Golf Cart (needs new batteries); **TRAILERS:** 2020 H & H 24' Flat Bed Alum. Trailer w/Power Tilt; 2019 H & H 20' Flat Bed Alum. Trailer w/Power Tilt



Estate of: Dean Koch

Auctioneers Note: Saturday Sale Starting w/Tools. Followed w/Equipment, Tractors & Vehicles. Real Estates will be offered at 1:00 pm.



Attorney: Richard Scheib, 570-523-3200
Auctioneers: Lori Hess Lauver, AU-002854-L, 570-966-2512 & Daniel King, AA-019500-L

Complete Listings & Photo's Available at auctionzip.com ID# 2399 or GoToAuction.com ID#4215

Owners & Auctioneers Not Responsible for Accidents - Food Stand
All Verbal Information Day of Auction Takes Precedence Over Written Advertisement



TWO DAY Auction

3 PARCEL UNION COUNTY REAL ESTATE

Friday, September 24th at 9 a.m.

Located 1 Mile West of Lewisburg Along SR 45 Old Turnpike Rd. at 170 Salem Church Rd., Lewisburg, East Buffalo Twp., Union Co., Pa.

Household Goods & Collectibles (Selling Friday):

Frigidaire Air Conditioner; Microwave; Keurig Coffee Pot; Office Desk & Chair; Beige Loveseat Recliner; Green Recliner; New Brown Lift Chair; Brn. Recliner Sectional; Oak Glass Top Corner Cupboard; 9 pc. Table & Chairs; Oak Bar Stools; Beige Recliners; Hickory Bentwood Porch Rockers; Crib; Plank Bottom Rocker; 2 Pine End Stands; 3 pc. Living Rm. Suite; 3 pc. & 4 pc. Dbl. Bedroom Suites; 4 Drawer Wooden File Cabinet; 50+ Folding Chairs; Kitchen Items; Drink Cloverdale Soft Drink Chalk Board; 3 Adult & 1 Childs Bentwood Rockers; Butcher Kettle; 4 pc. & 8 pc. Wicker Patio Sets; Collapsible Picnic Tables; Bristol Conn Wall Clock; Modern Oak Corner Cupboard; 9 pc. Dinette Set; Coffee Table; Toshiba Flat Screen TV; Sectional Sofa; Coffee Table; Recliners; Maple Rocker; End Stands; 3 pc. Living Room Suite; Inlaid End Stands; Milk Pail; Dbl. Wooden Pine Bed; 2 Drawer End Stands; 4 pc. Bassett Bedroom Suite; Wind Tunnel Upright Sweeper; Milk Cans; Western Flyer Bike; Wedding Accessories; Adv. Boxes; Cabbage Slicer; Cheese Boxes; Childs Wagon; Metal Scooter; Barrels; Brass Clock, 8 Day Bristol, Conn. Wall Clock; Vintage Hibber Chicago Tricycle; Wire Bike Rack; Shutters; Pepsi & Cloverdale Thermometer, Signs & Wdn Boxes; Cloverdale Chalk Board Sign; Cloverdale Metal Storm Door Hand Sign; Ice Tongs; 2 Man Saw; Galv. Tubs; Stainless Steel Wheeled Shop Cart; Lawn & Garden Tools; Egg Basket; Bottles; Muncy Chief Hybrid Corn Seed Bag; Taltoe Backpack Sprayer; Hardware; Croquet Set; Bakeware; Kitchen Aid Cookware; Dinnerware; Lodge Cast Iron Fry Pan; Chicago Cutlery Knives; Rival Deep Fryer; Crock Pots; **COLLECTIBLE TOY VEHICLES:** Winross Koch's Trucking & Bastian; Penjoy Koch's Trucking; **FRANKLIN MINT:** 1925 Chevy, 1936 Ford Deluxe, 1934 Packard, 1931 Ford, 1932 Cadillac, 560 Cockshutt Diesel Tractor, 560 FFA Farmall, John Deere A & Much More.

Saturday, September 25th at 1 p.m.

Property located at 170 Salem Church Road, Lewisburg

62 ACRE UNION COUNTY FARM

3 Bedroom 2 Story Vinyl & Mountain Stone Front Farmhouse. Stunning Remodeled Wooden Pine Log Accenting Walls & Ceiling. Natural Stained Finished Beams throughout Creating a Breath-Taking Country Atmosphere. Modern State of the Art Kitchen w/Oak Legacy Cabinets & Granite Countertop/Island. Recessed Lighting. Selling w/Appliances. Mt. Stone Gas Fireplace in the Extraordinary Spacious Open Concept Living/Family Rm. Pleasant 3 Season Room Leading onto a Lg. Patio w/Brick Open Hearth & Built in Kettle Furnace for Picnics with a Im-



ESTATE OF DEAN KOCH

Auctioneers: Lori Hess Lauver, AU-002854-L, 570-966-2512 & Daniel King, AA-019500-L

Complete Listings & Photo's Available at auctionzip.com ID# 2399 or GoToAuction.com ID#4215

Saturday, September 25th at 1 p.m. cont...

pressive View of the Farm. Open Solid Oak Stairway. Home Office. 2 1/2 Baths. Laundry Rm. on the Second Floor. **Recent Improvements:** New Roof, Replacement Windows, Electric, Vinyl Sided, Furnace. Oil Hot Water Heat. **Well Maintained Move-In Condition Property.** Cement Basement. Well. Septic. Working Fire Hydrant. Well Maintained Vinyl Sided Cemented Floor Bank Barn w/Water. Various Agricultural Related Outbuildings. 2 Car Vinyl Sided Garage. 3 Bay Pole Shed; Tool Shed. **Custom 60'x105' Metal Insulated & Heated Building w/Epoxy Concrete Finished Floor (Dean's Toy Box).** Water, 200 amp. Electric. 4 - 14'x14' Overhead Elect. Doors. High Bay Lights. **An Attached Heated 18'x30' Office w/Bathroom. 18'x30' Extended Porch.** Full Macadam Driveway. Large Fenced in Pasture to the Rear of the Property. Taxes: \$6,949.20. **Terms:** \$25,000 down, balance in 60 days.



19 ACRE UNION COUNTY FARM

Property located at 4075 Old Turnpike Road, Lewisburg

5 Bedroom 2 Story Colonial Style House with a Lg. Front Porch & Peaceful Side Porch Nestled among the Ornamental Zen Garden & Gazebo. Modern Eat-In Kitchen w/Accenting Brick Wall & Selling w/Appliances. Formal Dining Rm. w/Finished Wooden Floors & Built-in Corner Cupboard, Carpet Living Rm., Lg. Family Rm. w/Fireplace. Grand Curved Spiral Stairway Leading to the Second Floor. Master Bedroom has Sliding Glass Door leading to Rear Balcony for Quiet Relaxing Time. 4 Baths. Laundry Area. Basement Family Room. Separate Electric Heat Zones. Septic. Well. Central House Fan. Lg. Bank Barn which was Converted into a Reception Venue. Beneath Bank Barn is Fully Cemented. Overhead Doors. An Appealing Macadam Driveway Entry thru Lined Pine Trees into the Private Property Setting. 2 Car Cemented Floor & Vinyl Sided Garage. Garage has Wooden Second Floor. Water Source. Taxes: \$4,036.00. **Terms:** \$20,000 down, balance in 60 days.



2 ACRE COUNTRY HOME

Property located at 506 Salem Church Road, Lewisburg

4 Bedroom 2 Story Vinyl Sided Farm House. Eat-In Kitchen w/Side Entrance onto the Enclosed Side Porch. Dining Rm. Living Rm. Family Rm. w/Lg. Fireplace & Finished Pine Ceiling & Walls which Leads to a Rear Patio. 1 1/2 Baths. Refinished Wooden Floors throughout. Wooden Stairway. **Recent Improvements:** New Roof, Vinyl Siding, Lg. Magnificent Mountain Stone Retaining Wall & Cemented Floor Patio to Enjoy Relaxing Evening Sunsets. Oil Hot Water Heat. Septic & Well. Replacement & Storm Windows. Newly Renovated Bank Barn w/Cement Floor, Stalls, Frost Free Hydrant. Utility Shed. Taxes: \$3,425.00. **Terms:** \$10,000 down, balance in 60 days.



All Three Properties Border Each Other! A Rare Find Situated in a Beautiful Country Setting Just Minutes from Downtown Lewisburg. Road Frontage on SR 45 Old Turnpike Road & Salem Church Road Provides Unlimited Opportunities. A Once in a lifetime opportunity for a Farmer, Entrepreneur or Investor.

For Inspection of these Properties Call 570-541-6293. Prospective Buyers may Conduct Various Property Testings at their own Expense Prior to Sale Day. No Buyers Premiums.

Saturday, September 25th at 8 a.m.

Located 1 Mile West of Lewisburg Along SR 45 Old Turnpike Rd. at 170 Salem Church Rd., Lewisburg, East Buffalo Twp., Union Co., Pa.

Tractors & Farm Equipment:



1939 Oliver 70, NFE Tractor; 1944 - Oliver Model 70 NFE Row Crop Gas Tractor; Oliver Model 60 Row Crop Tractor; Oliver Model 880 Diesel WFE Tractor; Oliver Model 88 NFE Row Crop Gas Tractor; Oliver Model 88 Diesel NFE Tractor; Ford New Holland "S" 3010 WFE Diesel Tractor, 352 miles; 35 Massey Ferguson Turf Special WFE, Gas Pedal Foot Feed, Oversize Tires, 6842 Hrs.; Ferguson Model 40 WFE Tractor; 1950 - Massey Ferguson Model 20 Tractor (needs work); 2 - Farmall H NFE Tractors; 1 Bottom Oliver Plow; Flat Bed Hay Wagon; Gas & Diesel Tanks; 7' Bush Hog; Titan 5106 Landscape Rake; 7' Titan 4507 Rear Blade; Bale Fork; Oliver Seed Box and More.

Classic Cars & Trucks:



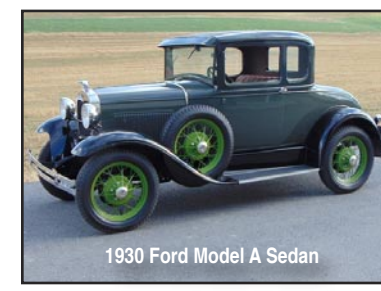
1952 Mercury Monterey

1952 Robin Egg Blue Mercury Monterey, Hardtop, V-8 Flat-head Engine, Restored, Uph., Frame, Paint, 8,632 miles



1956 Ford Coupe Fairlane Victoria

1956 White/Turquoise Ford Coupe Fairlane Victoria, Repainted, New Uph., (needs rebuilt, runs)



1930 Ford Model A Sedan

1930 - 2 Tone Olive Green/Black with Lime Rims Ford Model A Sedan, Excellent Condition, Mitchell Overdrive, Flat-head 4 Cylinder Engine, SS Exhaust, Completely Restored Engine, Interior, Body, New Vinyl Top, Alternator, 193 Miles



1953 Model 3100 Chevrolet Truck

1953 Cadet Blue Model 3100 Chevrolet Truck, V-8, PS, PB, Automatic, Disc Brakes, New Frame, 36,052 mls.



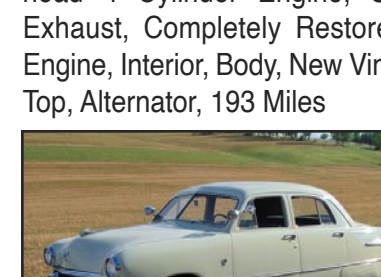
1940 Ford Mercury Eight Coupe

1940 Slate Blue Ford Mercury Eight Coupe, V-8, Flat-head 24 Studheads, New Interior, 52,166 miles (Received Various Awards)



1949 International Model KB.5 Truck

1949 Forest Green/Black International Model KB.5, Truck (Dump Box) International Green Diamond Flat-head Engine, 80 hp, 4 spd., pto Hydraulic, Completely Restored (1,800 mls.)



1951 Ford Custom Sedan

1951 Seafoam Light Green Ford Custom Sedan, Flathead V-8, Alternator, 30,823 miles



2000 Ford F-650XL Super Duty Dump Truck

2000 Ford F-650XL Super Duty Dump Truck w/Cummins Diesel, 60,548 mls.; Int'l. Dump Truck w/DT466 Diesel, run.