

Frey & Sons

PROFESSIONAL AUCTIONEERS
Box 7 • Archbold, Ohio 43502



Davenport Excavating
Wednesday, April 24 - 9:30 am
Coldwater, Michigan



PHC, Inc & Others
Thursday, May 2 - 9:30 am
Toledo, Ohio

ADDRESS SERVICE REQUESTED
FIRST CLASS AUTO

TWO UPCOMING AUCTIONS!

FIRST CLASS MAIL

Auction 1: Davenport Exc. Coldwater, Michigan

Wednesday, April 24, 2019 • 9:30 am



NOTICE: Davenport Excavating and Grading will be offering their excess equipment at auction. Other companies have also added a few items. Don't miss this auction!

Can't make it to the sale? Bid live, on-line with proxibid.com

LOCATION: 251 S Michigan Ave, Coldwater, Michigan. Just west of I-69 exit 13 at Coldwater, MI, take Michigan Ave south to auction site at former concrete plant / gravel pit. Watch for signs!

INSPECTION: Mon. & Tues, April 22 & 23 from 9:00 am to 4:00 pm.

TERMS FOR BOTH AUCTIONS: 10% Buyers Premium on each item selling for \$2500 and less, premium of 2% on items over \$2500. Photo ID to register. PAY IN FULL on SALE DAY by cash or guarantee funds! Company or Personal Checks MUST have current and positive bank letter of guarantee upon registration. Additional 3% fee for online bidding purchases. Auctioneers assume no liability for errors or omissions in this listing. Announcements sale day take precedence over printed matter. **ITEMS SOLD AS IS, WHERE IS, WITHOUT ANY WARRANTIES WHATSOEVER, WHETHER EXPRESS, IMPLIED OR STATUTORY.** Expressly excluded are warranties of merchantability, fitness for use and purpose and description. Complete terms posted at site.

Auction 2: PHC Inc, & Others Toledo, Ohio

Thursday, May 2, 2019 • 9:30 am



NOTICE: PHC Inc is discontinuing operations and offering its equipment at absolute auction, along with excess equipment from Crestline Paving. Don't miss the auction!

Can't make it to the sale? Bid live, on-line with proxibid.com

LOCATION: PHC Yard, 3611 King Rd, Toledo, Ohio. From I-475 / US 23 exit 13 take US 20 / Central Ave. west approx. 1.5 miles to King Road, then north 1/2 mile to sale site. Watch for signs!

Limited parking for trailers and large trucks.

INSPECTION: Tuesday, Apr. 30 & Weds. May 1, from 9:00 am to 4:00 pm.

UPCOMING AUCTION
Friday, May 31 - Columbus OH - The Shelly Co.

Frey & Sons

Robert G. Frey, Kevin Frey, Mark Frey, Auctioneers
Archbold, OH 43502 • Phone: (800) 886-3739
www.freyandsons.com



AUCTION 1 COLDWATER, MICHIGAN WEDNESDAY, APRIL 24 - 9:30 am

STONE SLINGER TRUCK

2005 Kenworth Dahms Stone Slinger Quad Axle Truck, SN:1NKDL00X34J071486, Cummins ISM385V, RT014908LL Trans, 2004 Dahms Super 18XL Slinger SN:040204, Heated Box, Hetronics Remote Control, Reads 295,904 miles.

EXCAVATORS

Hitachi EX200LC-5 Hydraulic Excavator, SN:14M83971, EROPS, Bucket, Thumb, 15675 hrs.

2005 Terex/Daewoo TXC175-1 Hydraulic Excavator, SN:30033, EROPS, 48" & 60" Ditch Buckets, Thumb, 5620 hrs.

2012 Terex TC37 Mini Excavator, SN:0859, EROPS w/ Heat, Aux. Hyd, Hyd. Thumb, Blade, 12" & Ditch Buckets, 3140 hrs.

3000# Frost / Drop Ball

LOADERS

John Deere 644E Rubber Tired Loader, EROPS, GP Bucket, 23.5x25 Tires, 13450 hrs.

John Deere 644E Rubber Tired Loader, SN:522262, EROPS, GP Bucket, 23.5x25 Tires.

Protech 16' Snow Pusher • 10' Loader Snow Blade

DOZERS • COMPACTOR • GRADER

2005 John Deere 450J LT Dozer, SN:116201, ROPS, 6 Way Blade, 4855 hrs.

1989 John Deere 550G Dozer, SN:762349, ROPS, 6 Way Blade, 12,442 hrs.

John Deere 750 Dozer, SN:267070, ROPS, Straight Blade w/ Tilt.

1997 Caterpillar D6R XL Dozer, SN:5LN0839, EROPS, Straight Blade w/ Tilt, 14000 hrs.

SuperPac 540C Smooth Vibratory Compactor, SN:J900461, Deutz Diesel (rebuilt 2015), 54" Drum, 13.5x16.1 Tires, Reads 3931 hrs.

Galion 102 Motor Grader, SN:MD8843, Detroit Diesel.

TLBS • BACKHOES • CRAWLER SKID LDR

2012 Caterpillar 430F 4x4 Tractor Loader Backhoe, SN:RDF0292, EROPS, 4wd, Extendahoe, Aux. Hyd., 4400 hrs.

John Deere 310D 4x4 Tractor Loader Backhoe, SN:031898822, EROPS, 4wd, Extendahoe. Buckets: 12", 24" Teeth, 24" Smooth, 28", Frost Tooth for 510 • Clip on Forks for TLB

2015 Bobcat T590 Crawler Skidloader, SN:ALJU15847, Enclosed Cab w/ Heat, Foot Controls, Radio, New Tracks, GP Bucket & Forks, Hyds, 2100 hrs. • Bobcat Power Broom w/ Power Angle.

DUMP TRUCKS

2005 Kenworth T800 Triaxle Dump Truck, SN:1NKDL00X55J100794, Cummins ISM385V, RT014908LL Trans, D46-170H 4.56 Rear Axle, 16' Steel Box (New Floor), Reads 304,712 miles, 16,328 hrs.

1997 Ford L9000 Triaxle Dump Truck, SN:1FDZS96T9VVA03820, Cat 3306 Diesel (rebuilt), 13 Speed, Airlift 3rd Axle, 15' Steel Box, 401,645 miles. (#20)

1997 Ford L9000 Tandem Dump Truck, SN:1FDYS86F8VVA43076, Reman Cat 3126, 8LL Trans, 14' Steel Box, Reads 484,000 miles.

1987 Ford L9000 Triaxle Cab & Chassis SN:HVA07027, Cummins, 8 Speed, with Dump Cylinder - no bed, 810,000 miles.



2005 Kenworth / Dahm Super 18XL Stone Slinger



2005 Terex TXC175-1 Hydraulic Excavator



2005 John Deere 450J LT Dozer



2005 Kenworth T800 Triaxle Dump Truck



2015 Bobcat T590 Crawler Skidloader

AUCTION 1

COLDWATER, MI
WEDNESDAY, APR. 24
9:30 am

TRACTOR • LOWBOY • DUMP

1997 Freightliner Tandem Truck Tractor, SN:1FUJ3MCB8VP575467, Cummins M11 330hp, 10 Speed, Wetline.

1990 Trail King Detachable Tandem Lowboy Trailer, SN:1TKH0432XLM077178, 102"x20' Deck, 7.5' Over Axles.

1980 Trailco 24' Triaxle Aluminum Dump Trailer, SN:AG4647 (Not road worthy)

PICKUPS • FLATBEDS

2016 Ford F350 S/A 4x4 Flatbed, Gas, Auto, 4wd, Knapheide 9' Flatbed w/ Gooseneck Ball, Toolboxes, Fuel Tank, 50,000 miles.

2012 Ford F250SD 4x4 Crew Cab Pickup, SN:CEA32055, V8 Gas, Lariat Pkg, Loaded, Leather Heat/Cool Seats, 133,500 miles.

2005 Ford F350 4x4 Crew Cab S/A Flatbed, SN:5EB31119, V10 Gas, Auto, Dually, Gooseneck Ball, 148,200 miles.

2005 Ford F250 4x4 Ext. Cab Pickup, SN:5EA31803, Gas, Auto, 4wd, Short Bed, Meyer Plow, Boss Salter, 192,900 miles.

2004 Interstate 10 Ton Tdm Tag Trailer, Tandem Dually, 20' Deck, 5' Beavertail.

76"x14' Tandem Tag Trailer, Ramps

2013 CornPro UT14H 7 Ton Tandem Tag Trailer, 80"x14' Deck, Ramps.

SUPPORT EQUIPMENT

LeRoi 150 Air Compressor, Detroit Diesel. Like New Hydrostatic Test Pump

(3) WB Plate Compactors; Lincoln Portable Welder; Sewer Rods; (2) Wheelbarrows; Misc. Sona Tubes; Misc. Construction Signs; Orange Snow Fence; Misc. Concrete Blocks.

Meyer 9' Straight Blade; Meyer 8' Straight Blade; (2) Pickup Transfer Tanks; (2) Pickup Toolboxes; Tommy Gate; (7+) Pallets of Salt

LB10 Rotary Laser; ProShot Laser w/ Grade; (5) Laser Tripods; (4) Grade Poles.

Air Op. Truck Floor Jack; Wheel Dolly; Engine Cherry Picker; 20 Ton Shop Press; 12 Spd Drill Press; 30g Parts Washer

Spare Slinger Belt; JD 265 Mower for Parts; 15' Dump Box Liner; JD 644E Cyl. Barrel; Misc. Wheels & Tires.

UPCOMING AUCTION

Fri. May 31 - Columbus OH - Shelly Co.

AUCTION 2

TOLEDO, OHIO
THURSDAY, MAY 2
9:30 am

EXCAVATORS & UNDERGROUND

2005 Caterpillar 315C-L Hydraulic Excavator, SN:0CJ2003, Cab w/ Air, Hyd. Quicktatch, 24", 22", 48" & 5' Ditch Bucket, **2497 hrs.**

Bodine 36" 5 Tooth Grapple, Fits Cat 315, Model: GLT21SDBLEAR

2006 Caterpillar 325C-L Hydraulic Excavator, SN:BFE01064, EROPS w/ Air, Quick Coupler, Bucket, Reads **7,255 Hrs.**

1997 Kobelco SK200-IV Hydraulic Excavator, SN:YQU3612, Cab / Air, Hyd. QT, 48" Bucket, 6520 hrs.

2004 Kobelco SK135SR Offset Boom Hydraulic Excavator, SN:YH02077, 8,174 Hrs

1998 John Deere 120 Hydraulic Excavator, SN:30988, Cab/Heat, AM/FM, Hyd. JRB QT, 24", 42" & 5' Ditch Buckets, 14845 hrs.

2007 Yanmar V1075 Mini Excavator, SN:12638, Yanmar Diesel, Cab / Air, Blade, Aux. Hyd. Hyd. QT 18, 24" & 48" Ditch Buckets, Rubber Tracks, 5994 hrs.

Trench Boxes: 10x16, 8x20, 4x20 Ext, 8x16, 8x12, (2) 6x16, 8x8 Manhole Box (No paperwork on boxes) **Spreaders:** 30"- 120" **Ast'd Street plates:** (15) 16x6 3/4", (7) 6x10 3/4", (4) 3x6 3/4"

Rammer S56 Hydraulic Breaker

COMPACTORS

Ingersoll Rand SP-56 Smooth Vibratory Compactor, SN:5034-5, Detroit Diesel, 84" Smooth Drum, 18.4x26 Tires.

Bomag BW-120 Tandem Vibratory Roller, SN:31973, Diesel, 48" Drums, 1895 hrs.

TRACTORS • BROOM SWEEPER

2014 John Deere 5045D Tractor, SN:B019983, Diesel, 2wd, Front Weights, 3pt, PTO, Hyd Outlets, Reads 115 hrs. • 3pt Brush Chopper

1997 Waldon Sweepmaster, SN:23883, Cab.

Massey-Ferguson 230 Broom Tractor, SN:8A30 6031, Front Broom, 3pt, PTO



LOADER • TLB • SKIDLOADER

1998 Case 621B-XT Rubber Tired Loader, SN:JG0056260, EROPS, ACS QT GP Bucket & Forks, 20.5x25 Tires, 12,495 hrs.

1995 Case 580SL Tractor Loader Backhoe, SN:JG0171526, EROPS, 2wd, Extendahoe QT, 12", 18", 24" 36" & 48" Ditch Bkts, 7115 hrs.

2005 Bobcat T190 Crawler Skidloader, SN:527716484, Hyds, GP Bkt & Forks, 2522 hr.

Cyclone Skidloader Concrete Drop Hammer Mr. Manhole Cutter

DOZERS & GRADER

1998 Cat D5C XL-III Dozer, SN:9D601994, ROPS, 6 Way Blade, Reads 4,741 Hrs

1995 Case 550G-LT Dozer, SN:JJG0215484, ROPS, 6 Way Blade, 16" Pads, 5276 hrs.

1989 Fiat Allis 65B Motor Grader, SN:68C04476, 6 Cyl. Diesel, Slide / Tilt, Scarifier, 4288 hrs.

DUMP TRUCKS

2004 Mack Quad Axle Dump Truck, SN:1M2 AG11C64M008323, E7 Mack Engine, Mack 10 Speed 310 Trans, Steel Box, Strobe Lights, Reads 336,734 Miles

1998 Kenworth T800B Triaxle Dump Truck, SN:1NKDX90X9WR778766, Cummins M11-370+, RT014908LL, Jake, Cruise, 16' Steel Box, Reads 351,529 miles.

1996 Volvo Quad Axle Dump Truck, SN:4V5 JCBFE9TR851899, 8LL Trans, Steel Box, Strobe Lights, Reads 364,500 Miles.

1995 Mack CH613 Tandem Axle Dump Truck, SN:1M2AA13Y15W055856, Mack E7-350, 9 Speed, Air Ride, 15' Steel Box, 1,132,569 mi.

1990 GMC Volvo Tandem Axle Dump Truck, SN:4V2JCBMDOLR803148, Cummins LTA10-240hp, 9 Speed, 14' Steel Box, 1,107,920 mi.

Aluminum Dump Box Water Tank

MECH TRUCKS • PICKUPS

2003 Ford F650 Mechanics Truck, SN:3FDNF 65H73MB03015, 7 Speed Manual Trans, 14' Mech Box, IMT Dominator II Model 6025 10,000# Crane, Reads 159,300 Miles.

2007 GMC 3500 HD Service Truck, SN:1GDHK 39697E562882, Duramax Diesel, Auto Trans, 187,528 Miles

1997 Ford F-250 Pickup, SN:VEB54481, Gas, Auto, Std Cab, Long Bed, 120,172 miles

TRAILERS

1994 Eager Beaver 20HALX 20 Ton Tandem Tag Trailer, SN:112H5V309RL043456, 102"x21' + 6' Beavertail, Ramps, Air Brakes.

1991 Eager Beaver 20HAL 20 Ton Tandem Tag Trailer, SN:112HSV302ML038057

2011 PJ 7 Ton Tandem Axle Trailer, SN:153623, 84"x18' Deck, 2' Beavertail, Ramps.

2006 Forest River 10' S/A Cargo Trailer, SN:47626, Model:HALS610SA, 6x10, Swing Rear & Side Doors.

1991 82"x12' Tandem Tag Trailer

2002 Prowler Lite 25' Travel Trailer, SN:63636



2005 Caterpillar 315CL Hydraulic Excavator



1998 Kenworth T800 Triaxle Dump Truck



2004 Mack Quad Axle Dump Truck



2004 Kobelco SK135SR Offset Boom Excavator

SMALL EQUIPMENT

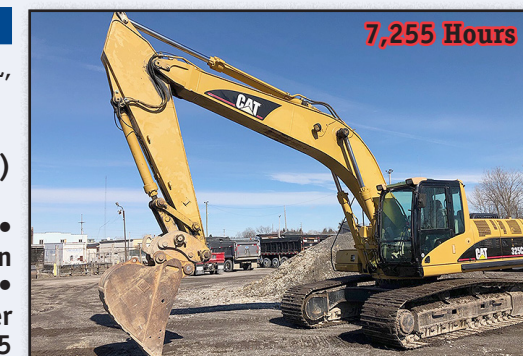
Sreco-Flexible Jetter, Model:HV2060TR/L, SN:WMTR-911314, Trailer Mtd.

Arrow Board • Davey 125 Air Compressor Miller Walk Behind Saw • Tar Kettle (portable) • Concrete Bucket • Concrete Chutes

Georgia Buggy • Landa Steam Cleaner • Lincoln SA200 Portable Welder • Lincoln Welder • Airco PCS100 Plasma Cutter • Clemco Sandblaster • Portable 1000g Water Tank Trailer • Construction Machine AS35 Hyd Pipe Pusher.

Guardian Fall Protection 3 Way Retractable Tripod, w/ harnesses; Cherne Air Test Equipment, ast'd test and plug balls; Cherne Manhole Vacuum Test Equip.; Homelite 7500 & Generac GP1880 Gen Sets; (2) 2" Diaphragm Pump; (3) 3" Centrifugal Pump; (1) 2" Centrifugal Pump; Sears Shallow Well Jet Pump; (2) 2" Electric Pumps; 2" Electric Trash Pump; 2" & 3" discharge hose; Homelite Manhole Blower; Ridgid Portable Air Compressor; Plate Compactor, Honda Engine; Dayton 2 Man Gas Auger; (2) Stihl TS410 Cut-off Saws; Stihl TS420 Cut-off Saw; Target Milwaukee Concrete Core Drill, w/Drill, (2) 4" bits & (1) 6" bit; Stihl 034 Chain Saw; Buddy 120k BTU Kerosene Heater; Pittsburgh 3 Ton Floor Jack; Hawke Hyd. Engine Hoist.

Survey: Leica Rugby 300 SG & Laser Alignment LB22 Rotary Lasers; Topcon TP-L4AV Pipe Laser; (2) SP Dialgrade Pipe Lasers; Bullseye Apache Machine Control Laser Receiver; (5) Survey Instruments and Levels with legs & sticks. Schonstedt GA-52Cx Magnetic Locator; Rycom Pathfinder Pipe/Cable Locator.



2006 Caterpillar 325CL Hydraulic Excavator



1998 Case 621B XT Rubber Tired Loader



2007 Yanmar V1075 Mini Excavator

Frey & Sons

Archbold, OH 43502 • Phone: (419) 445-3739
http://www.freyandsons.com

Can't Make it to the Auction? Register for this event on proxibid.com and bid from the comfort of your home or office. **BID LIVE ONLINE!**

proxibid
877-505-7770
www.proxibid.com

Can't Make it to the Auction? Register for this event on proxibid.com and bid from the comfort of your home or office. **BID LIVE ONLINE!**

proxibid
877-505-7770
www.proxibid.com