

Retirement Farm Equipment

ONLINE ONLY Auction!

Bidding Opens October 26

Bidding Begins Closing November 1

Location: 2044 590th St, Newell, IA 50568. From the east edge of Storm Lake, IA at the Hwy 71 and Hwy 7 intersection go 2 miles north on Hwy 71 then go 7 1/4 miles east on Blacktop C-49. OR from Newell, IA go 4 miles north on 210th Ave then 3/4 miles west on C-49. Auction sign will be **Between Storm Lake & Newell, IA** posted!



Tractors:

1. Case IH 7120 MFWD diesel tractor, 13,500 hours, with 3 hyd, 540 small/1000 PTO, 3pt, no quick hitch. Has 14 front suit case weights, LED lights and 380/85R46 rear rubber with axle duals. No monitors
2. 1979 John Deere 4440 WF diesel tractor, 13,516 hours, quad range transmission, 3 pt, dual hyd with LED lights and 18.4x38 rear rubber, SN027881R. Re-built starter
3. International 966 diesel tractor, 9880 hours, WF, rear fenders, 3 pt, dual hyd, 540 small/1000 PTO with 575 lb. rear wheel weights; with brackets for Miller loader. No step and torque is out

Excavator:

4. 2019 Yanmar ViO35 diesel track excavator has 579 hours with 69" blade and 18" tooth bucket with hydraulic thumb, SN AH518

Trailers:

5. 2014 Wilson aluminum 40' double deck livestock triple axle trailer, with 3-compartments on the bottom and 2 compartments on the top, has removable deck with rails
6. 2005 Great Dane spread axle step deck trailer, 53' long, aluminum floor, has new stainless steel boxes and tie-down straps, 255/70R22.5
7. PJ Triple axle 5th wheel 30' flatbed trailer with 5' beaver tail, has fold-up ramps on HD 8 bolt tires. Brakes need work
8. Wooden 18' flatbed with back on 6 bolt gear, 2" floor, 6x6 beams, 8' wide
9. Wooden flatbed on 5 bolt gear, 18'x8', "as is", needs rear boards replaced. Tank not included

Wagons:

10. Balzer 18' front unload silage wagon on HD gear with 8-bolt wheels, has tandem axles and metal sides and roof
11. Balzer 16' front unload silage wagon on HD gear with 8-bolt wheels, has tandem axles and metal sides and roof
12. Balzer 20' front unload silage wagon on HD gear with 8-bolt wheels, has tandem axles and metal sides and roof
13. Balzer 20' front unload silage wagon, tandem axle. For parts
14. Balzer 18' front unload silage wagon, tandem axle. Needs some work, for parts
15. Roorda rear unload double web wooden silage wagon on 8T gear with hyd latch on door. Will have tire on
16. Kory 250 bu gravity wagon on 8T Kory gear

Semi:

17. 2004 Kenworth T600 semi, with 72" aero cab sleeper, C-15 cat engine, Eaton Fuller 10-speed transmission, good tires, near new batteries, hyd 2 line wet kit. 1 million+ miles needs DOT inspection.

Skidloader:

18. New Holland L185 Superboom diesel 2-speed skid loader; 3500 hours, solid airless tires, has heat and AC and radio with rear weights and 6' bucket--good bolt on cutting edge

Zero-turn Mower:

26. Ferris IS 3100 Big Block Z zero-turn mower with 61" deck has Vanguard 30 hp engine, roll bar and 690 hrs

Attachments:

19. Miller HD P-12 hyd plate loader with quick-tach 7' bucket
20. Miller single quick-tach hay spear
21. Miller Quick-tach homemade 4-spear hay spear
22. Quick-tach 4-spear bale spear for skidloader
23. Quick-tach skidloader pallet forks with safety rack
24. Grab Tec 7' skidloader hyd grapple quick-tach bucket
25. Farmhand accumulator grapple quick-tach skidloader mount

Farm Equipment:

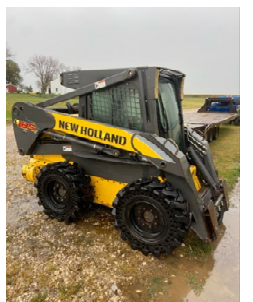
27. Supreme International 700T feeder wagon, small 1000 PTO, twin screw, has scale with read out, new unloading tray, 5/8" floor, stainless steel liner and knives ~2 years ago
28. Meyers VB750 twin twister vertical HD manure spreader. Double web, tandem axle with hyd slop gate, SN50VB750B
29. Gehl 1200 pull-type chopper with sharpener, small 1000 PTO, 3-row narrow corn head and hay pick-up
30. Kelly Ryan Big Bagger, 540 PTO has dual wheels and back stop. Works good
31. Kuhn pull-type tedder 540 PTO
32. New Idea 528 6' disk mower with 540 PTO, needs work
33. 30 gal 4-wheeler poly sprayer with boom-less nozzles and new wand
34. Teagle Tomahawk 8080WB bale shredder, 540 PTO
35. Kuhn GA 4220 TH Master Drive rotary pull-type rake, 540 PTO
36. Industrial American 10' box scraper w/ hyd tilt and lift
37. John Deere 466 square baler with Farmhand 8 pack accumulator. Has belt driven hyd pump, has good rubber, hyd lift cyl for head. Recently serviced by John Deere
38. John Deere 945 Moco 13.5' Discbine mower, small 1000 PTO and tongue hitch, needs work
39. International 490 hyd fold 19' tandem disc on wheels on wings and 9" spacing

Livestock Equipment:

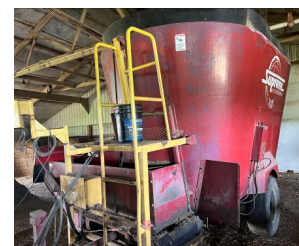
40. ElectroNet sheep netting, 14 rolls
41. 14) Lil Spring 2700 series double drink automatic poly waterers with heater kits
42. 8) Lil Spring 3000 series single drink automatic poly waterers with heater kits
45. 4) Sioux 65 gal poly 2-drink waterers
46. Sydel working chute with tub, 2-way sort and guillotine gate
47. Spin doctor chute
48. Arkfeld Instant-Way Manual scale
49. 2) large Stainless steel creep feeders
50. 8) small Stainless steel creep feeders
51. Panel gates
52. 11) Lambing jugs
53. Feed and water buckets
54. 12) Premier 1 heat lamps
55. Small wooden loading chute
56. 8) stainless steel double side feeders, 36"
57. 12) 48" wall fans with covers has 3) Grain Trac controllers, 5'x~180' curtain and poly louvers

Misc:

58. 1000 gal diesel fuel tank with like new Fil-Rite electric pump
59. 300 gal overhead gas tank on stand
60. Plastic septic tank, 5'x14' with 3 top lids-has censor for how full (unknown if works)
61. Posts and wooden RR ties
62. Various assorted lengths lumber, many 2x6, 2x12 and 2x18
63. Various assorted lengths lumber, many 2x6, 2x12 and 2x18
64. Ash planks 12"x3"x13'
65. Tongue and groove lumber 2x6 and 2x12, various lengths
66. Galvanized tubing for fencing
67. DR walk behind weed eater, 6.75 Exi Briggs & Stratton motor
68. Wooden insulated dog house
69. 150+) Large square straw bales 3x3x8
70. Approx. 60) small square straw bales
71. Ace Roto-Mold 200 gal poly water tank with frame
72. Galvanized corrugated tin of various lengths--most 9' long
73. 7x14 bulk bin to be moved, holds 5-6 tons



Pick up: November 3 from 10-4 ONLY



Showing!

Wednesday, October 25 from 4-6 PM.

If this is not convenient please contact Cory.

Stoney Creek Farm

Cory
507-220-1449

AUCTION COMPANY NOTE: Check out this retirement farm equipment online only auction between Storm Lake & Newell, Iowa. We are pleased to work with Cory and Valerie. This is a can't miss auction! Items will be open for bidding on October 26 and will begin to close on November 1st. View our website or check out the equipment on Auctiontime.com. Please reach out if you have any questions! 712-729-3264. Any questions regarding the equipment can be directed to Cory at 507-220-1449. Pick up and payment is scheduled for Friday, November 3 from 10-4 PM. Thanks for your interest and happy bidding! Todd, Rich, Shannon and Levi

TERMS & CONDITIONS: Vander Werff & Associates, Inc. appreciates your business and interest in this equipment up for auction. All pieces of equipment are sold "AS IS" "WHERE IS" with NO warranties. **5% buyer's premium.** Inspection day is Wed, Oct 25 from 4-6 PM CT. If these dates don't work for you in order to view the equipment before the auction end date please feel free to call and set up an appointment. It is your responsibility as buyer to do your due diligence before buying a piece of equipment. Vander Werff & Associates, Inc. WILL NOT be held accountable for purchases made. **MAKE CERTAIN** you look over all pictures BEFORE clicking the bid button. Bidding means you agree to the contract of our Terms and Conditions and are responsible for paying for the item(s) in full immediately after the winning bid. Payments for equipment are to be paid in full by WIRE TRANSFER ONLY within 48 hours of sale date and time. There will be a 5% buyer's premium added to each piece sold on Auction Time. This amount will be included on your invoice. **EQUIPMENT MUST BE PAID IN FULL BEFORE PICK UP.** Buyer shall be responsible for any and all shipping costs and shipping or delivery arrangements. Upon purchase of a titled piece of equipment, Vander Werff & Associates, Inc. will issue a Bill of Sale the day of pickup. The title for that piece of equipment will be available within 3-5 business days of the sale date. Vander Werff & Associates, Inc. will be happy to mail the title to you. **REMOVAL:** All items **MUST BE** removed from the yard within 15 days of November 1st, 2023. Buyer will also hold the Auction Company harmless from any injury or damage to the item caused by any other issue. All items are sold "as-is, where-is" with no warranty or guarantee expressed or implied for description, miles/hours, size, years, condition, or fitness for use. Conditional notes or descriptions are deemed an opinion only and in no way guaranteed. Condition notes are given as a guide only. Factual information on any lot sold is to be verified solely by the buyer/bidder. Inaccuracies in the catalog or on the internet will under no circumstances relieve the purchaser from the sale. Auction was written up as of August 25th, 2023; all hours/miles were as of then. Additional hours/miles may have accrued on some items. Once a bid is recorded it **CANNOT** or **WILL NOT** be changed or altered. It's solely the bidder's responsibility to be responsible for any bids posted by their bidder account. No buyer shall retract his bid. The buyer accepts the lot when he makes a bid. All sales are final. All opinions of condition are strictly to be used as guidelines. **INSPECT BEFORE YOU BID!** Vander Werff & Associates will be happy to answer any questions that you the buyer may have just give us a call 712-729-3264. Pick up: November 3rd from 10-4 PM ONLY!



www.vw72.com

AuctionTime.com



215 Main St.
Sanborn, IA 51248
712-729-3264
auctions@tcaexpress.net

Todd Hattermann
Paullina, IA
712-348-0111

Rich Vander Werff
Sanborn, IA
712-261-0298

Shannon Rydberg
Sanborn, IA
850-712-7041

Levi Mouw
Edgerton, MN
712-441-6898