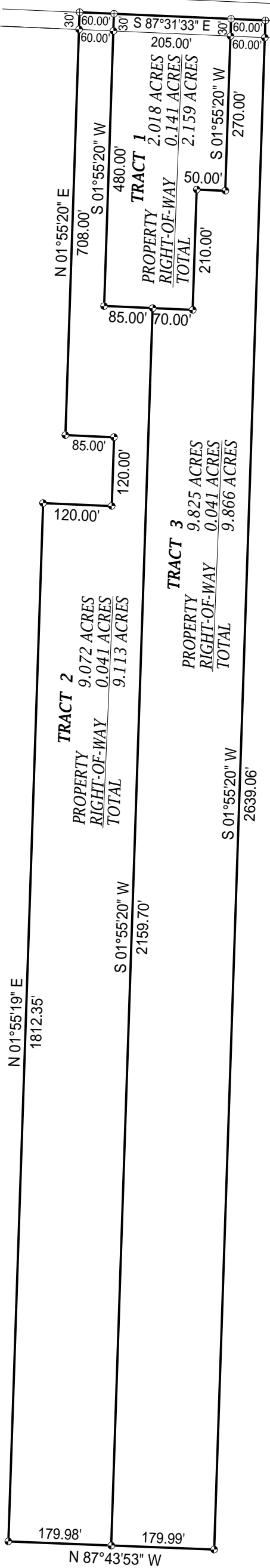


POINT OF COMMENCEMENT
 NW CORNER, SECTION 3,
 T-3-S, R-5-W, LIMESTONE
 COUNTY, ALABAMA

NEW CUT ROAD (60' RIGHT-OF-WAY)



NOTE: FINAL SURVEY SUBJECT
 TO MINOR CHANGES IN
 BEARINGS AND DISTANCES.

SPECIAL PURPOSE SKETCH FOR JOE CROW (AUCTION PLAT)
COFFMAN & BEDDOW LAND SURVEYORS LLC 18960 UPPER FORT HAMPTON ROAD ELKMONT, ALABAMA, 35620 PHONE (256) 732-4787 FAX (256) 732-4229
SCALE: 1" = 200'
DATE: 07/14/2018
APPROVED BY: RGC
DRAWN BY: RGC
REVISED:
DRAWING NO. 18-126