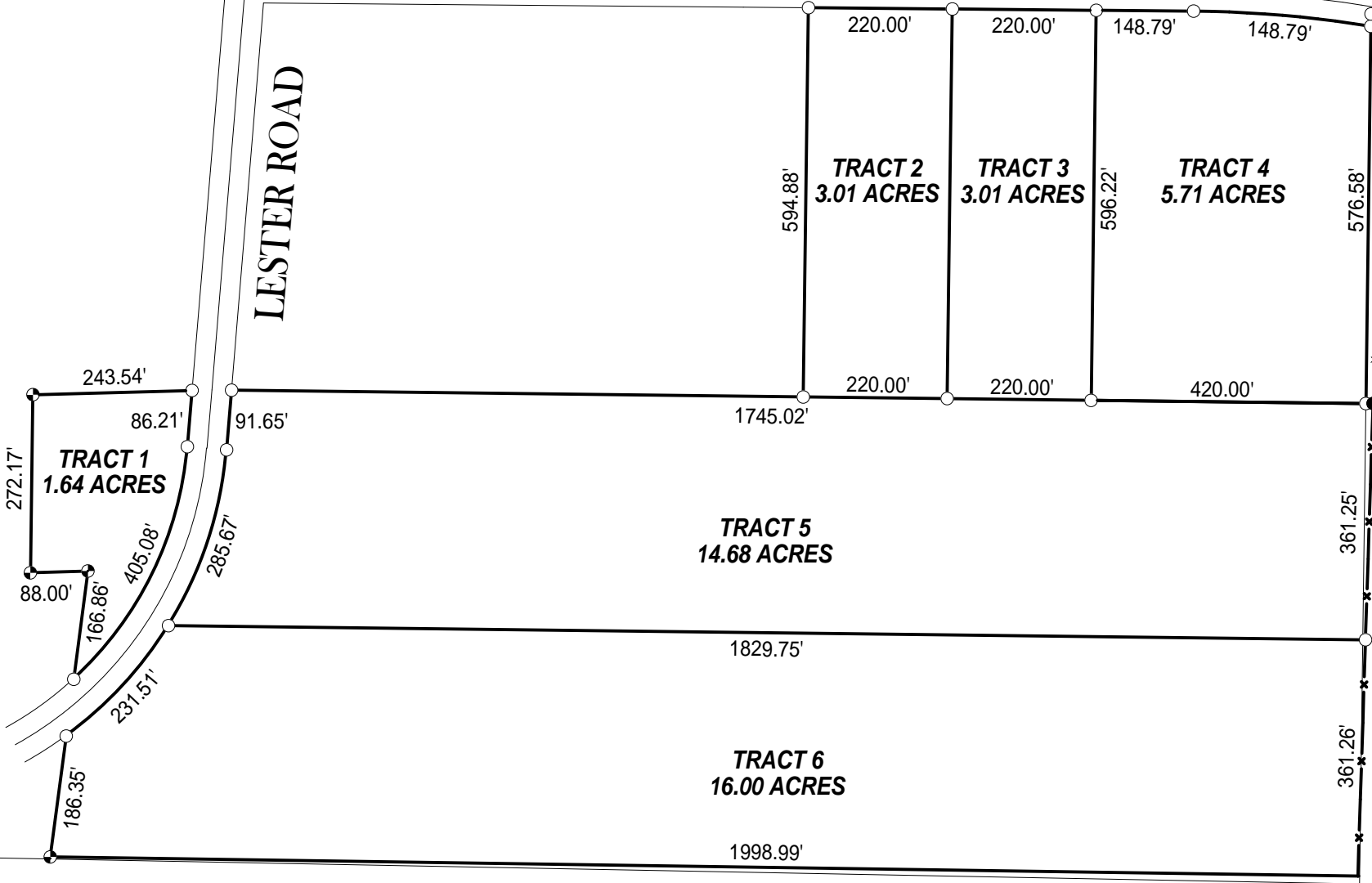


WEST LIMESTONE SCHOOL HOUSE ROAD

LESTER ROAD

N.E. CORNER
S.1/2, S.W. 1/4
SECTION 23
T-1-S, R-6-W
LIMESTONE
COUNTY, AL



S.W. CORNER, SECTION 23
T-1-S, R-6-W LIMESTONE
COUNTY, AL



**SPECIAL PURPOSE SKETCH
McCONNELL PROPERTY**

Coffman & Beddow Land Surveyor's LLC - 18960 Upper Fort Hampton Road			
Elkmont, Alabama, 35620		Phone (256) 732-4787	Fax (256) 732-4229
SCALE 1" = 240'	Date: 8/31/2017	Drawn by: CPB	Drawing No. 17-147