

AUCTION

SATURDAY, NOVEMBER 21st 10:00 A.M.

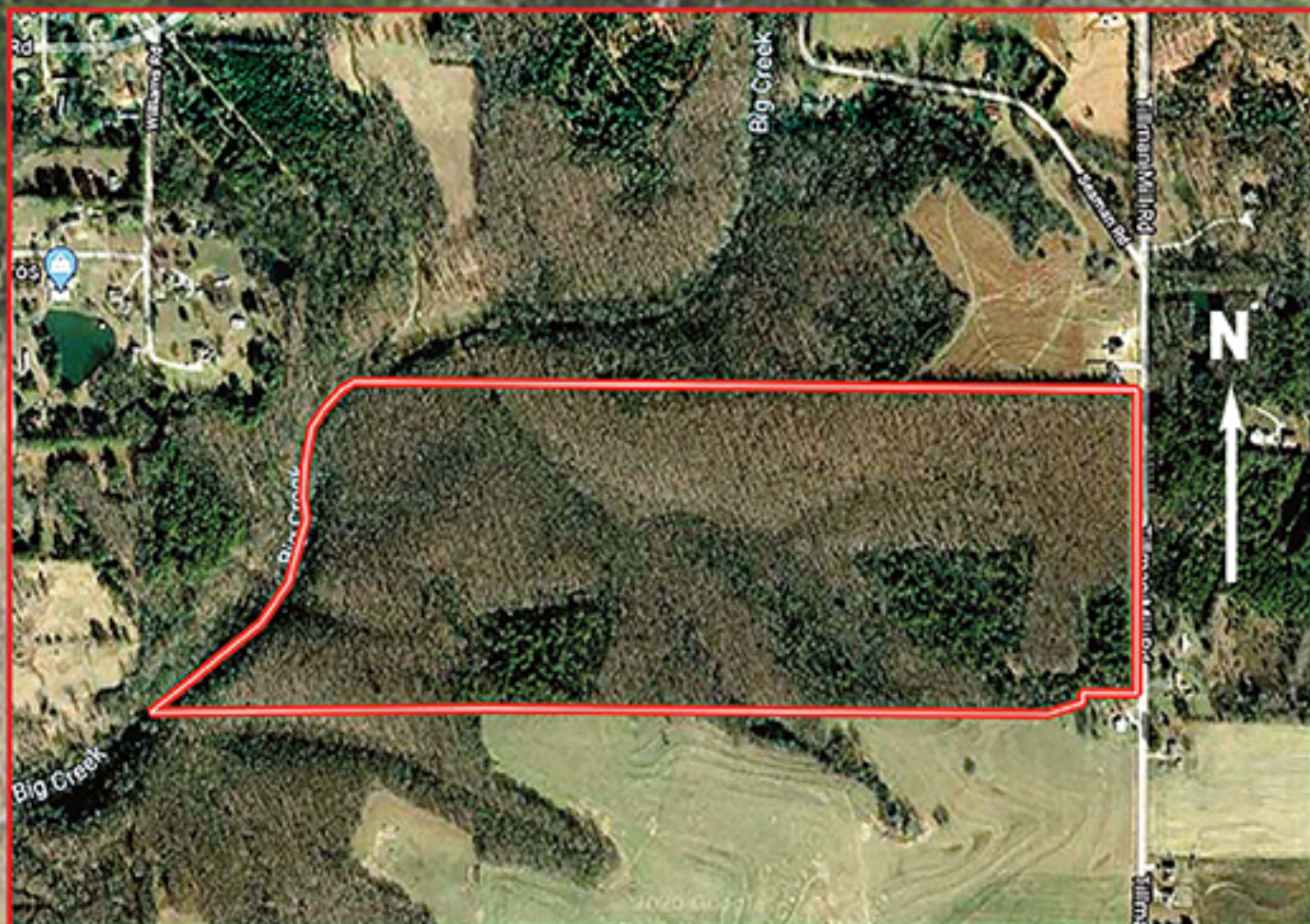
100± ACRES IN 4 TRACTS

19365 TILLMAN MILL ROAD • ATHENS, ALABAMA 35614

LOCATED IN THE OWENS COMMUNITY

EXCELLENT PROPERTY WITH ROAD FRONTAGE ON TILLMAN MILL ROAD

This Beautiful 100 +/- Acres features Wooded Tracts, Gently Rolling Land. Excellent Mini-Farms, Development Property or Build Your Dream Home with Room to Breathe. This Property was previously used as Pasture Land and the back of the property Borders Big Creek. Electricity & Public Water is available. Each Tract contains 25 +/- Acres. The Property will be offered in Individual Tracts, Combinations of Tracts and As A Whole. Don't Miss This Great Opportunity to Purchase some Large Tracts.



DICK CHITTAM, Broker
JOHN STEWART, Broker/Auctioneer
S.L. #364 256-431-7504
JUSTIN CHITTAM, Auctioneer S.L. #2700
MICHAEL STEWART, Auctioneer S.L. #5473
DONALD EVANS, Auctioneer A.A. #3034

DICK CHITTAM
REALTY
112 W. Washington St.
Athens, AL 35611
JOHN STEWART AUCTION CO.
"Let Us Plan An Auction For You"

Call Us For Information Phone:
(256) 232-6666 • Toll Free: 1-800-566-6605
Visit Us On The Web:
www.johnstewartauctions.com
email: johnstewart195@gmail.com
www.auctionzip.com #9084
www.gotoauction.com #3188