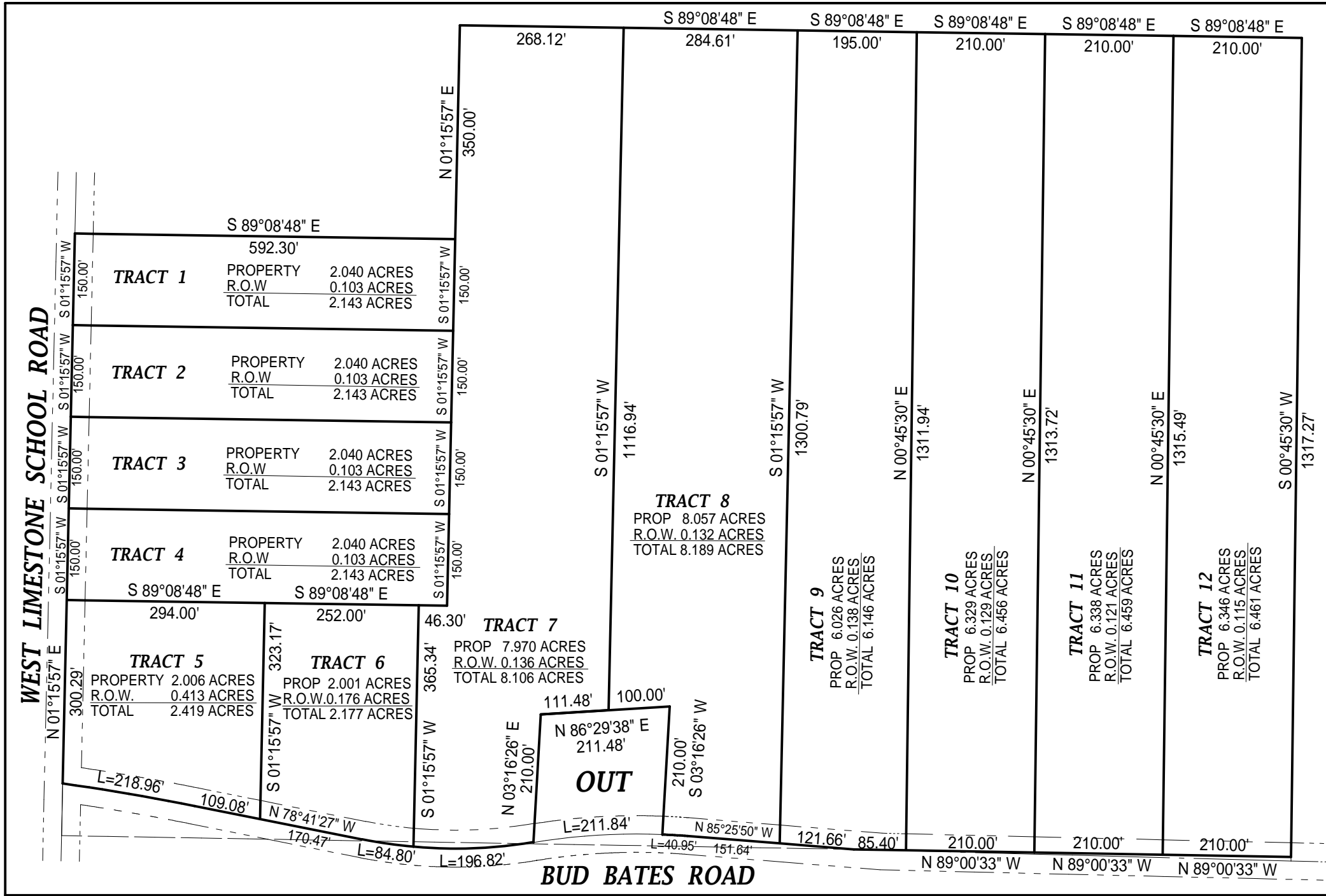


WEST LIMESTONE SCHOOL ROAD



**SPECIAL PURPOSE
AUCTION PLAT FOR
KEITH HARBIN**

**COFFMAN & BEDDOW
LAND SURVEYORS LLC
18960 UPPER FORT
HAMPTON ROAD
ELKMONT, ALABAMA, 35620
PHONE (256) 732-4787
FAX (256) 732-4229**

SCALE: 1" = 200'
DATE: 02/20/2019
APPROVED BY: RGC
DRAWN BY: RGC
REVISED: 3/06/2019
DRAWING NO. 19-35A

TRACT 1
S 89°08'48" E
592.30'
PROPERTY 2.040 ACRES
R.O.W. 0.103 ACRES
TOTAL 2.143 ACRES

TRACT 2
PROPERTY 2.040 ACRES
R.O.W. 0.103 ACRES
TOTAL 2.143 ACRES

TRACT 3
PROPERTY 2.040 ACRES
R.O.W. 0.103 ACRES
TOTAL 2.143 ACRES

TRACT 4
PROPERTY 2.040 ACRES
R.O.W. 0.103 ACRES
TOTAL 2.143 ACRES

TRACT 5
PROPERTY 2.006 ACRES
R.O.W. 0.413 ACRES
TOTAL 2.419 ACRES

TRACT 6
PROP 2.001 ACRES
R.O.W. 0.176 ACRES
TOTAL 2.177 ACRES

TRACT 7
PROP 7.970 ACRES
R.O.W. 0.136 ACRES
TOTAL 8.106 ACRES

OUT
N 86°29'38" E
211.48'
L=211.84'

TRACT 8
PROP 8.057 ACRES
R.O.W. 0.132 ACRES
TOTAL 8.189 ACRES

TRACT 9
PROP 6.026 ACRES
R.O.W. 0.138 ACRES
TOTAL 6.146 ACRES

TRACT 10
PROP 6.329 ACRES
R.O.W. 0.129 ACRES
TOTAL 6.456 ACRES

TRACT 11
PROP 6.338 ACRES
R.O.W. 0.121 ACRES
TOTAL 6.459 ACRES

TRACT 12
PROP 6.346 ACRES
R.O.W. 0.115 ACRES
TOTAL 6.461 ACRES

BUD BATES ROAD