



**2 BIG DAYS**

Auctioneers: Donnie W. Dean, MS Lic. # 733  
& Wes Dean, MS Lic. 1322  
PO Box 1248 - 1042 Holland Ave  
Philadelphia, Mississippi 39350

Presorted  
FIRST-CLASS MAIL  
US POSTAGE  
PAID  
BERNE IN 46711  
PERMIT # 43

RETURN SERVICE REQUESTED

**TIME SENSITIVE MATERIAL  
PLEASE DELIVER ON TIME**

# SELLING FOR MISSISSIPPI AND ALABAMA COUNTIES, RENTAL FLEETS, CONTRACTORS, CONSTRUCTION COMPANIES & OTHERS!

## HUGE 2-DAY PUBLIC AUCTION

(16) 2019 Kenworth T800 Tri-axle  
16K to 43K Miles (County-Owned)



Auctioneers: Donnie W. Dean, MS Lic. 733 & Wes Dean, MS Lic. 1322, MS Gallery Lic. 835F  
[www.deancoauction.com](http://www.deancoauction.com)

**19th ANNUAL CONTRACTORS' EQUIPMENT & TRUCK AUCTION**  
**Wednesday, March 25<sup>th</sup> & Thursday, March 26<sup>th</sup>, 2020 9am**  
**102 Holland Ave (Hwy 19 S) - Philadelphia, Mississippi 39350**  
Phone: 601-656-9768 Fax: 601-656-0192



(3 of 8) 2019 Mack GR64F Tri-axle  
44K to 58K Miles (County-Owned)

**19th Annual HUGE 2-Day Springtime  
Equipment & Truck Auction**  
**WEDNESDAY, MARCH 25<sup>th</sup> &  
THURSDAY, MAR. 26<sup>th</sup> 2020 9AM**  
**1042 Holland Ave (Highway 19 S)  
Philadelphia, Mississippi 39350**

Office Phone: 601-656-9768 Office Fax: 601-656-0192 [www.deancoauction.com](http://www.deancoauction.com)



(2) 2018 Mack CHU613 (115K & 130K Miles)



2012 John Deere 8235R MFWD  
w/ JD Firestar ITC GPS System

bid live  
ONLINE



(1 of 2) 2014 John Deere  
210GLC



(3) 2016 John Deere 310L AWD (1208 to 1955 Hours)



2015 Kenworth T800



2017 Western  
Star 4700SF  
(County-Owned)  
103K mi.



2005 Peterbilt 388  
(120K mi.)



2009 Kenworth W900L  
(32K mi.)



2015 Peterbilt 388



2017 Mack GU533  
(80K mi.)



2007 Kenworth W900



(3) 2019 Kenworth T800 Tandem-axle  
8K to 17K mi. (County-Owned)



2019 Kenworth  
T800 - 11K mi.  
(County-Owned)



226K mi.  
1993 International 4900 Flatbed, s/n 26489; S/A



(2) 2011 International ProStar, s/n 45573, 45572: Day Cab, 10-sp.



2009 Peterbilt 388 Truck Tractor, s/n 77339: T/A, Day Cab, 10-sp., 640K mi.



1996 Mack RD688S, s/n 27406: T/A, Day Cab, Eaton Fuller 8-sp., Headache Rack



2007 Freightliner M2-106 (95K mi.)  
(Owned by Alabama Power)

**Wednesday, March 25<sup>th</sup> & Thursday, March 26<sup>th</sup> 9AM**  
**1042 Holland Ave, Philadelphia, Mississippi 39350**  
Phone: 601-656-9768 Fax: 601-656-0192 [www.deancoauction.com](http://www.deancoauction.com)



Many more items will be added prior to auction. Check our website for a daily updated list of equipment.

**TRUCKS & TANDEM-AXLE DUMP TRUCKS - Day 1**  
(16) 2019 Kenworth T800 Tri-axle, s/n 17213, 17214, 17211, 17212, 17217, 17218, 17216, 17215, 04216, 04217, 04218, 04223, 04220, 04221, 04222. Cummins X15 Eng., Automatic, 18740# Front w/ 385/65R22.5 Tires, 46K Rears w/ 11R24.5 Tires, 20K Third Axle w/ 11R22.5 Tires, 4.10 Ratio, Ox Bodies 21-year Dump, Elec. Tarp, 11K to 43K mi. (County-Owned)  
2019 Kenworth T800 Tri-axle, s/n 04247: Cummins X15 500hp Eng., Allison Auto., 18740 Front w/ 385/65R22.5 Tires, 46K Rears w/ 11R24.5 Tires, 20K Third Axle w/ 11R22.5 Tires, Hendrickson Susp., 4.10 Ratio, Ox Bodies 16' 21-21-year Dump, Pintle Hitch, Rear Air, 11K mi. (County-Owned)  
(3) 2019 Kenworth T800 Tandem-axle, s/n 04248, 04246, 04249: Cummins X15 Eng., Allison Auto.

18740 Front w/ 385/65R22.5 Tires, 46K Rears w/ 11R24.5 Tires, Hendrickson Susp., 4.10 Ratio, Ox Bodies 16' 21-21-year Dump, 8K to 17K mi. (County-Owned)  
(8) 2019 Mack GR64F Tri-axle, s/n 09799, 09793, 09798, 09790, 09801, 09796, 09794, 09800: MP8-455M Eng., 455hp, 12.8L, Allison Auto., 20K Front w/ 65R22.5 on Alum. Discs, 46K Rears w/ 11R24.5 Tires on Alum. Discs, Air Lift 3rd Axle w/ 11R22.5 Tires on Steel Discs, Camelback Susp., Ox Bodies Stampede 16' 21-year Dump, High Lift Tailgate, Asphalt Extension, 44K to 58K mi. (County-Owned)  
2017 Mack GU533 Tandem-axle, s/n 11267: Cummins ISL 345hp Eng., Allison Auto., 46K Susp., 20K Front, SBA, Jake Brake, Locking Diff, Double Frame, P/S, A/C, 16' Body, Tarp, Air Tailgate, 80K mi.  
2017 Western Star 4700SF Tandem-axle, s/n A4673: Detroit DD13 12.8L 500hp Eng., E/F 8L, 18K Front, 44K Rears, Locking Diff & Axles, TruTrac Susp., Warren 16' 19-21 yard Bed, Asphalt Ext., High Lift Gate, 103K mi. (County-Owned)  
2013 Mack GU713 Tri-axle, s/n 16264: 10-sp., 18' Bed, 290K mi.  
2005 Western Star 4900SA Tri-axle, s/n 74791  
2001 Mack RD688S Tri-axle, s/n 58665: 12.0L Eng., Air Brakes, Ox Bodies Dump, 308K mi.  
(3) 2000 Mack RD690S Tandem-axle, s/n 31577, 31575, 31641: 12.0L Eng., 7-sp., Air Brakes, Ox Bodies 16' 17-19 yard Dump, 254K to 310K mi.  
1999 Mack RD688S Tri-axle, s/n 42767  
1999 International 4900 Tandem-axle, s/n 71795: DT466E Eng., Auto., Air Brakes, 13.5' 12-14 yard Ox Bodies Dump  
1998 International 4900 Tandem-axle, s/n 39770: DT466E Eng., Auto., Air Brakes, Ox Bodies 13.5' 12-14 yard Dump, 264K mi.

**TRUCK TRACTORS - Day 1**  
(2) 2018 Mack CHU613, s/n 27302 & 027300: Day Cab, MP8 415hp Eng., M Drive Trans., 38K Air Ride Susp., 14320# Front, Mack Rears, Sliding 5th Wheel, Jake Brake, Dual Line Wet Kit, 11.24.5 Tires, Alum. Wheels Front & Rear, P/S, A/C, 115K & 130K mi.  
2016 Mack CHU613, s/n 20849: MP8 445hp Eng., Mack 13-sp., Air Ride Susp., 11.24.5 Tires, P/S, A/C, Jake Brake, Locking Diff, Alum. Wheels Front, 213K mi.  
2015 Peterbilt 388, s/n 37915: 450 ISX Cummins Eng., 10-sp., 40K Rears, 262' WB, 265K mi.  
2015 Mack CHN613, s/n 17991: Day Cab, MP8 Eng., 13-sp., Air Ride Susp., 228K mi.  
2015 Mack CHU613, s/n 21272: Day Cab, Mack MP8 445hp Eng., 10-sp., 13.2K Front, 38K Rears, Camelback Susp., 250K mi.  
2015 Mack CHU613, s/n 20000: Day Cab, 13-sp., 332K mi.  
2015 Kenworth T800, s/n 42582: Tri-axle, Day Cab, 13-sp., 347K mi.  
2015 International ProStar, s/n 20952: Fuller 10-sp., Sleeper, All Alum. Rims, 471K mi.  
2014 Mack CXU613, s/n 40575: MP8 445hp Eng., M Drive Trans., 40K Air Ride Susp., 12K Front, Sliding 5th Wheel, Jake Brake, Locking Diff, 52" Mid Roof Sleeper, P/S, A/C, 391K mi.  
2014 Peterbilt 388, s/n 35633: 450 ISX Cummins Eng., 10-sp., Jake, 40K Rears, 262' WB, 275K mi.  
2013 Peterbilt 367, s/n 76435: Day Cab, Cummins ISX-15 450hp Eng., 10-sp., Air Leaf Susp., 236' WB, All Alum. Wheels  
(2) 2013 Freightliner Cascadia, s/n F4472, F4475: PK12506AT, T/A, Day Cab  
2012 Mack CXU613, s/n 23486: Day Cab, 10-sp., Wet Kit, 616K mi.  
2011 Mack CHU613, s/n 07590: Day Cab, 13-sp., 403K mi.  
2011 Western Star 4900FA, s/n A5840: Detroit DD15 505hp Eng., 10-sp., 14.7K Front, 40K Rears, Air Ride.

Dual Exhaust, Dual Breathers, 11R24.5 Tires, Alum. Wheels, 563K mi.  
(2) 2011 International ProStar, s/n 45573, 45572: Day Cab, 10-sp.  
2009 Peterbilt 388 Truck Tractor, s/n 77339: T/A, Day Cab, 10-sp., 640K mi.  
2009 Kenworth W900L: Tri-axle, Cummins 600hp Eng., 18-sp., 46K Rear, Double Locking, Double Frame, Dual Steer Sectors, Floats on Front, Verified 32K mi.  
2008 Peterbilt 367, s/n 40121: Sleeper, 15-sp.  
2007 Kenworth W900, s/n 73377: Heavy-haul Tri-axle, Day Cab, Cat C15 475hp Eng., 8LL, 46K Rears, 80000 lb. Ruffneck Winch  
2007 Kenworth T800, s/n 66929: T/A, Day Cab, 10-sp., 10-sp. Auto, 3.36 Rears, 235' WB, 72' Sleeper  
2007 Peterbilt 379, s/n 71490: 48" Flat Top Sleeper  
2007 Peterbilt 379, s/n 71495: 48" Flat Top Sleeper, 13-sp.  
2007 Peterbilt 379, s/n 73495: Sleeper, Cummins ISX475 Eng., 10-sp., 40K Rears, 3.70 Ratio  
2007 Volvo VNM430, s/n 81809: S/A, Sleeper, Volvo 12.1L 365hp Eng., Fuller 10-sp.  
2007 Volvo 780, s/n 41844: VE D12-465 Eng., Eaton Auto, Sleeper  
2005 Peterbilt 379, s/n 83855: T/A, Sleeper, 18-sp.  
2005 Peterbilt 379, s/n 58765: 550hp, 18-sp., Sleeper  
2005 Peterbilt 379, s/n 39642: Sleeper, Cat C15 Acert 475hp Eng., 10-sp., 40K Rears, 3.70 Ratio  
2005 Peterbilt 388, s/n 63290: Cummins Eng., 13-sp., 24.5 Tires, 120K mi.  
2005 Peterbilt 385, s/n 43847: S/A, 10-sp., 600K mi.  
2005 Kenworth T600, s/n 85229: Cat C15 475hp Eng., 10-sp., 3.36 Rears, 235' WB, 72' Sleeper  
2004 Peterbilt 379, s/n 23533: 10-sp., Unibilt Ultra Cab Sleeper  
2004 Kenworth W900L: Cat C13 Eng., 13-sp., Double Bunk Sleeper  
2000 Peterbilt 379, s/n 12261: Sleeper, 18-sp., Cat C15 Eng., 9-sp.  
1999 Freightliner FLD120, s/n 13216: Sleeper, Cummins N14 Eng., 9-sp.  
1999 Kenworth W900, s/n 17883: Sleeper, 10-sp.  
1997 Peterbilt 379, s/n 31355: Flat Top Sleeper, Cummins N14+ 460hp Eng., Eng. Rebuilt in 2018

1996 Peterbilt 379, s/n 97312: Sleeper, Cat 3406E Eng. w/ Platinum Rebuild by Empire w/ Warranty until 3/29/21, 12K Front, 40K Rears, 265' WB  
1996 Mack RD688S, s/n 27406: T/A, Day Cab, Eaton Fuller 8-sp., Headache Rack  
1995 Mack CH613, s/n 44939: Wet Kit, Headache Rack, Day Cab  
1995 White GMC, s/n 37109: D12 310hp Eng., 8-sp., Day Cab  
1994 Ford LN9000, s/n 00131: S/A  
1986 Kenworth W900, s/n 32236: Cummins 400 Eng., Fuller 15-sp., Flat Top Sleeper  
1986 International S2500, s/n 54389: Day Cab, Ramsey Winch, Cummins Eng., 10-sp., 138K mi. (Owned by MDOT)  
1983 Peterbilt 359, s/n 59197: Cummins 400 Eng., Fuller 15-sp., Flat Top Sleeper  
1980 Peterbilt, s/n 33728: Cummins Diesel, 50000 lb. Winch  
Military Truck, s/n 03258: T/A, 6x6, Diesel Eng., Auto, Canvas Top for Cab, 28K mi.

**Deanco Auction Text Alert System  
text JOIN to 601-656-2347**

**AUCTION INFORMATION**  
For Sale Information: Donnie W. Dean, Tim Harrison or Penny Eldard at 601-656-9768 or email sold@deancoauction.com  
Sale Site: 1042 Holland Ave, Philadelphia, MS 39350  
Hotels: Pearl River Resort, 866-447-3275, Hwy 16 W, Dancing Rabbit Inn, 601-386-6500, Hwy 16 W, Holiday Inn Express, 601-656-9484, Hwy 16 W, Delta Inn, 601-656-0352, Hwy 15 S, Super Inn, 601-656-3166, Hwy 16 W, Econo Lodge, 601-656-3553, Hwy 16 W, Western Motel, 601-656-1223, Hwy 19 S  
Aircraft: Commercial flights are available to Jackson, MS Intl Airport or Meridian, MS Municipal Airport. Private Aircraft may use Barrett Field - a 3.850 ft. paved strip adjacent to auction site. Call 601-656-9768 for conditions. MS96 - FREQ 123.00  
Auctioneers: Donnie W. Dean, Mississippi Auction Lic. 733; Wes Dean, Mississippi Auction Lic. 1322  
Terms: All purchases are to be paid for in American funds on sale day by cash or cashier's check. Personal/Company check must be accompanied with a current bank letter of guarantee made to Deanco Auction guaranteeing payment to Deanco Auction. We now accept select credit cards with a 3% fee. Credit Card Deposits May Not Be Refunded.  
NO EXCEPTIONS  
Registration: Anyone wishing to bid on items in the auction must register and obtain a bidder's card. Anyone bidding for an account other than their own must register as such.  
Warranty: Everything is sold "AS IS, WHERE IS, WITHOUT WARRANTY or guarantee of any sort, whether expressed or implied. DO NOT BID unless you have determined the condition of the lot from your own examination. All information was obtained from sources assumed to be correct but is not guaranteed by Deanco Auction.  
Catalogs: This brochure and the sale-day catalog are furnished by the Auctioneer as a guide only. No guarantee as to the accuracy of description is made.  
Sales Tax: All sales are subject to Mississippi sales tax unless you have proper re-sale exemption. Any dealer purchasing for resale must execute a Certificate of Resale and present your Sales Tax Permit No. Failure to furnish information will require payment of sales tax.  
Absentee Bids: Mailed absentee bids will be accepted only if received at least one day prior to sale day. The bid must be accompanied with a certified check or a company/personal check (with a current bank letter of guarantee made to Deanco Auction guaranteeing payment) in the amount of the bid. Failure to adhere to this procedure will nullify the bid. No telephoned or faxed bids.

**SINGLE-AXLE DUMP TRUCKS - Day 1**  
2008 GMC C7500, s/n 09114: Auto, 101K mi.  
2006 International 4400, s/n 36761: DT466, Auto, 8-yl Bed, 101K mi. (County-Owned)  
2005 Chevy C7500, s/n 17004: Gas Eng., Auto, 15' 2-tier Bed, 96K mi.  
1994 Mack Renault Midliner, s/n 00688: Diesel, 6-sp., GVWR 33000 lbs., 12' Steel Dump, 11R22.5 Tires.

**PLEASE NOTE: Buyers Fee is 10% on the first \$4500 then 1% on the remaining balance of each item.**



Kubota M5-111HDC  
MFWD



John Deere 9300 MFWD



(1 of 2) New Holland PowerStar  
T4.75 MFWD (less than 1000 hrs)



John Deere 7930  
MFWD



Mahindra 6530 MFWD (1022 hrs)

**DAY 1 CONTINUES  
ON BACK SIDE OF BROCHURE**





2006 John Deere 850J WLT (New Crate Engine)



1 of 2 of 2007 Peterbilt 379 Flat Top



2014 Peterbilt 388



2 of 3 of 2012-11 John Deere 200DLC



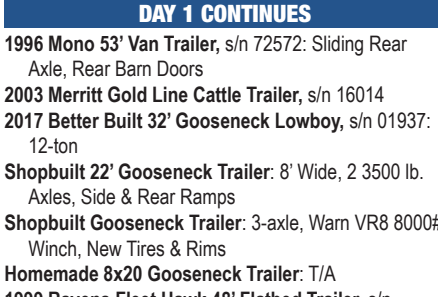
2016 Mack CHU613 (213K mi.)



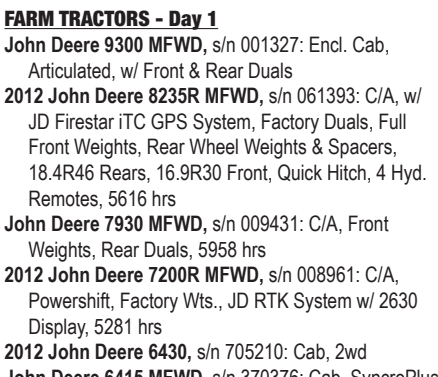
2005 Peterbilt 379



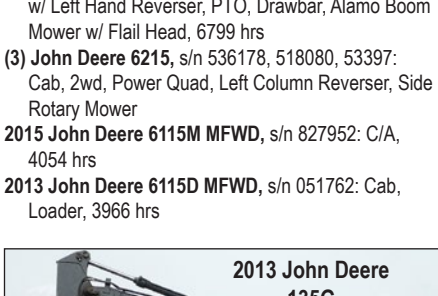
2018 Kubota SVL95-2S (687 hrs)



2014 John Deere 6105M MFWD



2012 John Deere 7200R MFWD



2013 John Deere 135G



2012 John Deere 8235R MFWD



2007 John Deere 700J LGP



2015 Cat 289D



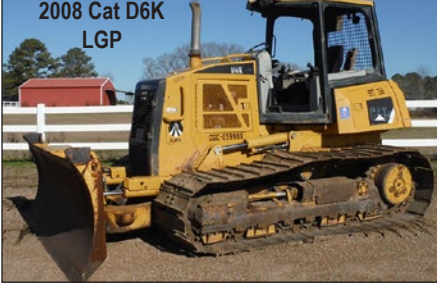
2012 Komatsu WA250-6



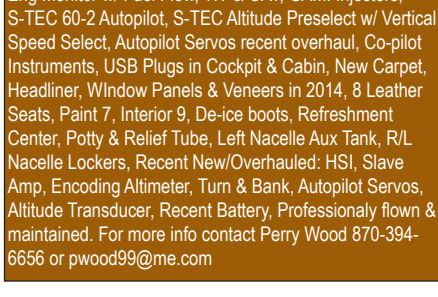
2010 Hitachi ZX85USBL3



2018 Case 580SN 4WD Extendahoe (County-Owned)



1976 Cessna 421C Golden Eagle, s/n 421C-0098 N149AF, 9770 TT, 1430.0 SMOH RE Ram, 595.8 SMOH LE Ram, Both Props 20 SMOH, Garmin GTN 650 w/ ads-b Traffic & Weather, King KX 155, Garmin 696 w/ Panel Dock, XM Weather & Approach Charts, Garmin GDL 88 provides ads-b in/out, Bendix red color Radar, Dual Garmin 320 Transponders, Audio Panel/Intercom, JPI 760 Eng Monitor w/ Fuel Flow, TIT & OAT, GAMI Injectors, S-TEC 60-2 Autopilot, S-TEC Altitude Presellect w/ Vertical Speed Select, Autopilot Servos recent overhaul, Co-pilot Instruments, USB Plugs in Cockpit & Cabin, New Carpet, Headliner, Window Panels & Veneers in 2014, 8 Leather Seats, Paint 7, Interior 9, De-ice boots, Refreshment Center, Poty & Relief Tube, Left Nacelle Aux Tank, R/L Nacelle Lockers, Recent New/Overhauled: HSI, Slave Amp, Encoded Altimeter, Turn & Bank, Autopilot Servos, Altitude Transducer, Recent Battery, Professionally flown & maintained. For more info contact Perry Wood 870-394-6656 or pwood99@me.com



2010 John Deere 650J LGP



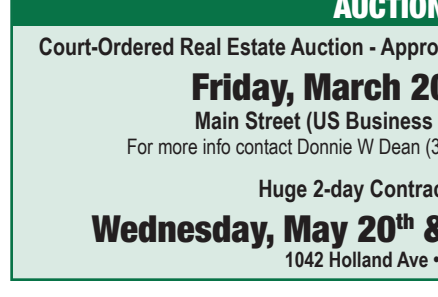
1997 Ford F800 w/ Pittman 40'



2012 John Deere 310SJ 4WD



2016 John Deere 317G (844 hrs)



2011 Manitou MT1840 4WD



2017 Kubota SSV75 (1002 hrs)

2010 John Deere 6115D MFWD, s/n 020618: Cab, 4260 hrs  
 2014 John Deere 6105M MFWD, s/n 811429: C/A, Eng. & Powertrain Warranty until 9/3/20 or 5000 hrs, 3805 hrs  
 John Deere 5400, s/n 643291: 2wd, Canopy, 5381 hrs  
 John Deere 5225 MFWD: Loader  
 2014 John Deere 5065E MFWD, s/n 116475: Plumbed for Front Loader, 1597 hrs  
 John Deere 5083E MFWD, s/n 160819: C/A  
 John Deere 5075E MFWD, s/n 001795: Cab, 2903 hrs  
 John Deere 4850 MFWD, s/n 013947: Cab, Front Weights, Rear Duals, 3PH, PTO, 3 Hyd. Remotes  
 John Deere 4755, s/n 007883: C/A, PS Trans., 3 Hyd. Remotes, Front Weights, 1795 hrs  
 John Deere 4310 MFWD, s/n 233934: Loader  
 John Deere 3032E, s/n 611311: 2249 hrs  
 John Deere 2305, s/n 223935: 529 hrs  
 John Deere 955 MFWD, s/n 203205: JD 70A Loader w/ Bkt., Hydrostat, 437 hrs  
 John Deere 870, s/n 001857: 2wd, 1068 hrs  
 John Deere 790 MFWD, s/n 291594: Loader  
 Kubota M108S MFWD, s/n 72484  
 Kubota M996HDC MFWD, s/n 56988: Encl. Cab, 1890 hrs  
 Kubota M7040 MFWD, s/n 87000: Roll Bar, Hyd. Shuttle, 3308 hrs  
 Kubota M5-111HDC, s/n 52323: Encl. Cab, 2 Hyd. Remotes, 1399 hrs  
 Kubota M4900, s/n 12873: Turf Tires, Canopy, 1811 hrs  
 Kubota L2501 MFWD, s/n 81121: LA525 Loader w/ Bkt., Hydrostat, 3PH, PTO, 53 hrs  
 Kubota L2500 MFWD, s/n 52023: 824 hrs  
 Kubota B3030HSDC MFWD, s/n 51206: C/A, Kubota LA403 Loader w/ Bkt., Turf Tires, 982 hrs  
 New Holland T6030 MFWD, s/n ZABD05189: Cab, 3407 hrs  
 (2) New Holland PowerStar T4.75 MFWD, s/n ZGAH50872, 02640: NH 655TL Loader w/ Bkt., 74hp, 634 & 972 hrs  
 New Holland Boomer 41 MFWD: Rollbar Canopy, 98 hrs  
 Case IH 5240A MFWD, s/n JUF1058969: Encl. Cab, 3rd Range not Working  
 2016 Massey Ferguson 1742, s/n GJ53639: DL125 Loader w/ QC Bkt., 101 hrs

Mahindra 6530 MFWD, s/n P30T1652: Rollbar Canopy, Front Loader w/ Hay Spear, Box Blade, 1022 hrs  
 Mahindra 4510 MFWD, s/n 00547: C/A, Heat, ML114 Loader w/ Bkt., 3PH, 3 Hyd. Remotes, 1032 hrs  
 Ford 6640S MFWD, s/n BD11774: Canopy, 3PH, PTO, Drawbar, 8-sp.  
 Ford 4630, s/n BC79238: Canopy, Side Boom Mower, Ditcher Attachment (Owned by MDO7)  
 Ford 4600, s/n 537355  
 Ford 3910: 1093 hrs  
 (3) Farnall A & Super A: Various Conditions, Lots of Parts

(2) 2006-05 GMC Sierra 2500HD 4WD: Diesel, Crew Cab  
 2005 Chevy 2500HD: Gas, Flatbed, 2wd, 161K mi.

**VEHICLES - Day 1**  
 2015 Maserati Ghibli: 4-door, 3.0L DOHC V6 Eng., Auto, Leather Seats, Sunroof, Loaded, 42K mi.  
 2008 Chevy Trailblazer: LT, 4-door, 4.2 6-cyl. Eng., Auto, 97K mi.  
 2008 Ford Crown Victoria  
 2004 Honda Accord  
 2000 Ford Excursion: Limited, V10 Gas Eng., Auto, Leather, 3rd Row Seats, New Wheels & Tires, New Tow Mirrors w/ Signal Lights, Chrome Bull Bar, 214K mi.  
 1997 Mercedes CL320 Convertible: w/ Hard & Soft Tops, 65K mi.  
 1985 Chevy K5 Blazer 4WD: Military, PS, PB, AT, 50K mi.

**ANTIQUE VEHICLES - Day 1**  
 1965 Buick Wildcat Convertible: 445 Eng., w/ 4 bbl Carb, Auto  
**MOTOR HOMES - Day 1**  
 2005 Gulf Stream Tour Master: Cat 350 Eng., 6-sp. Auto, 2 Slides, In Motion Satellite, On Board Generator, Full Size Fridge, Sleeps 4, 45K mi.  
**UTILITY VEHICLES, CARTS & ATVS - Day 1**  
 2015 Argo 8x8 Frontier EFI: 6 hrs  
 Kubota RTV900XTSA 4WD: Diesel, 2636 hrs  
 2015 John Deere XUV550S4 4WD: Crew Cab, Gas, Canopy, Dump Bed, 993 hrs  
 2015 Polaris Ranger 4WD: Crw Cab, Diesel, Dump Bed, Windshield  
 2013 Polaris Ranger RV 4WD: Electric, 34 hrs  
 Pack Mule Hucking Cart: 2 Bench Seats, Bumper-pull, 2-gun Racks  
 (2) 2010 Club Car Golf Carts: 48-volt, New Batteries  
 2010 EZGO Golf Cart: 48-volt, New Batteries

**MOWERS - Day 1**  
 Kubota ZD326P Zero-turn, s/n 15652: 60" Cut, Remaining Warranty, 505 hrs  
 (2) Kubota ZD1011 Zero-turn: 54" Cut, 190 hrs

(2) Kubota ZD221 Zero-turn: 54" Cut, 420 hrs  
 Kubota M726KXW Zero-turn: Kawasaki FX801V Gas Eng., 1310 hrs  
 Kubota ZD331 Zero-turn: Diesel, 72" Cut  
 Scag Cheetah Zero-turn: 61" Cut  
 John Deere Z925A Zero-turn: 27hp  
 Husqvarna RX4623 Zero-turn  
 Ferris Evolution Zero-turn: 52" Cut, 680 hrs

**RELATED ATTACHMENTS - Day 1**  
 BushHog 90 Hydraulic Grader Blade, s/n 12-00316  
 New John Deere 6' Bucket, s/n L051118 for Tractor  
 Silver Edge Finishing Mower  
 A&B 7' Box Blade  
 Land Pride FDR2572 6' Finish Mower, s/n 270771  
 King Kutter Dirt Scoop  
 King Kutter 6' Landscape Rake  
 (18) Bushwacker T180 15' Batwing Mowers  
 Various Antique Farm Implements: Horse-drawn

**MISCELLANEOUS ITEMS - Day 1**  
 2016 Valby LC600 Wood Chipper: PTO driven, 3PH, Hyd. Feed  
 Vermeer Hydraulic Power Unit: Deutz 47.5 Diesel, 1059 hrs  
 Numerous Concrete Water Troughs: Round & Square  
 Alkita Pressure Washer: w/ Burner, Wand & Hose (Owned by MDO7)  
 Scorpion Crash Attenuator  
 (12) Cressote Timbers  
 (5) 40' Shipping Containers  
 (4) 20' Shipping Containers

**SALVAGE ITEMS - Day 1**  
 2007 Freightliner Truck Tractor, s/n 64778: T/A, 10-sp., Sleeper, Engine Problem  
 2005 Freightliner Columbia Truck Tractor, s/n 28873: Sleeper, Needs Trans.  
 2006 International 4300 Van Truck, s/n 45747: DT466, 15' Bed, Needs Eng.



**Wednesday, March 25<sup>th</sup> & Thursday, March 26<sup>th</sup> 9am**  
**1042 Holland Ave, Philadelphia, Mississippi 39350**  
**Phone: 601-656-9768 Fax: 601-656-0192 www.deancoauction.com**

2 BIG DAYS  
 Many more items will be added prior to auction. Check our website for a daily updated list of equipment.

- DEANCO AUCTIONEERS** (Mississippi State Seal)
- MDOT**
- MCELA**
- MCELROY ELECTRIC**
- RIGGS TRUCKING**
- STATEN CONSTRUCTION**
- Alabama Power**

**Deanco Auction Text Alert System**  
 text JOIN to 601-656-2347

**KOMATSU** WA80, s/n H60444: C/A, 1580 hrs  
 2006 John Deere 444J, s/n 601761: Canopy, GP Bkt.  
 2014 John Deere 344K, s/n 035603: C/A, GP Bkt., Quick Connect, 4558 hrs  
 JCB 416B, s/n 529892  
 Cat 908, s/n 8B5943  
 Kramer-Allrad 320, s/n 972431  
 Kubota R520S, s/n 11294

**TRENCHERS - Day 2**  
 Astec RT960 4WD, s/n 60706: 6-way Blade, 4-wheel Steer, Counter Steer Capable, Off Setting, Counter Weights, Cummins Eng., less than 700 hrs  
 Ditchwitch 3527: Backhoe Attachment  
 2011 Ditch Witch RT110 Walk-behind: Honda Eng., 4598 hrs

**SITE DUMPERS - Day 2**  
 Terex 600SCTFA Skip Dumper, s/n FW050: 6-ton

**COMPACTION EQUIPMENT - Day 2**  
 JCB VM115 Vibratory Padfoot Compactor, s/n 1800366: Canopy, 84" Drum, 3727 hrs

**SWEEPERS - Day 2**  
 Rosco Challenger II 4840, s/n 45201: JD Eng., Encl. Cab  
 2000 International 4700 Vacuum Street Sweeper, s/n 28070: S/A

**CRANES - Day 2**  
 Galion 150F Series A Hydraulic Rough-terrain, s/n 07305  
 Broderson RT80 Carry Deck, s/n 726B: 1728 hrs  
 Broderson E228 Carry Deck

**FORKLIFTS - Day 2**  
 Skytrak 10054 Telescopic, s/n 15350: Hyd. Stabilizers, 48" Forks, Hyd. Leveling, Cummins 4-cyl. Eng., Canopy, 10000 lb. Cap.  
 2006 LULU 944E2 Telescopic, s/n 0160017577: 4x4x4, 9000 lb. Cap.  
 (3) 2008-05 Skytrak 8042 Telescopic, s/n 016003647, 0160036366, 09836: 4x4x4, 8000 lb. Cap.  
 2011 Manitou MT1840 4WD Telescopic: 57' Reach, 4-wheel Steer, 9000 lb. Cap., 1637 hrs  
 Ingersoll Rand VR843C Telescopic, s/n 180029  
 Case 585E Rough-terrain  
 Hyster H155X: 6' Forks, Side Shift, Hyd. Adj. Forks, 3 Stage Mast, Encl. Cab, Former Gov't Machine, 1596 hrs  
 Hyster 60XL.M, s/n A177B9487G  
 Windham WS-WSB 24LC, s/n 1609  
 Clark CGC25, s/n 9393FB: 3-stage Mast, Side Shift, 5000 lb. Cap.

**PERSONNEL LIFTS - Day 2**  
 JLG 80XH, s/n 0300017388: Boom-type, 80' Max Platform Hgt., 3511 hrs  
 2000 Terex TB80 Boom-type 4WD, s/n 00630121: Diesel  
 Grove Boom 4WD, s/n 2154100530: Boom-type, Deutz



New HT2650 Hydraulic Universal Thumb: fits Excavators up to 50000 lb.  
 (2) JCT Hydraulic 6' Brooms w/ Quick Attach  
 Unused Lowe 750 Hydraulic Auger w/ 12" Bit: Skid Steer Quick Attach  
 Unused Stout 66-9 Brush Grapple: Skid Steer Quick Attach  
 Unused Stout HD72-8 Brush Grapple: Skid Steer Quick Attach  
 Unused Stout HD72-FB Grapple Bucket: Skid Steer Quick Attach  
 (2) 70" Root Rakes for Skid Steer  
 (2) New Wolverine 6' Quick Attach Brush Cutters for Skid Steer  
 Esco ES45 Hydraulic Hammer, s/n 4503935 w/ Bit & Pins  
 Allied CS880 Hydraulic Hammer  
 Hensley 24" Excavator Rock Bucket  
 8' Root Rake  
 New Kubota Bucket, s/n A0427  
 (2) 72" Root Grapples  
 (10) Set of Forks

**SERVICE / MECHANIC TRUCKS - Day 2**  
 2015 Dodge 4500HD 4WD, s/n 24116: Crew Cab, Diesel, Stahl Utility Body, Welder, Generator, 69K mi.  
 2011 Ford F450 XL, s/n 20802: Super-duty, Ext. Cab, Auto, Rugged American V140 Cable Crank w/ Control, 30-gal Air Compressor, 184K mi.  
 2007 GMC Sierra 3500HD 4WD, s/n 06070: Diesel, Crew Cab, Utility-body, 250K mi.  
 2005 Ford F550, s/n 171364: 6.0 Powerstroke Diesel, Auto, Stellar 3315 Crane, Ingersoll Rand Air Compressor, 151K mi.

**WATER TRUCKS - Day 2**  
 2012 International 4300 M7: Maxxforce Diesel, Auto, Spring Susp., 254" WB, 2000-gal Steel Tank, Front/Side/Rear Discharge, 11R22.5 Tires  
 2005 Sterling L8500, s/n 44218: S/A, Cat C7 Eng., 7-sp., Air Brakes, Front/Side/Rear Discharge, 270K mi.  
 2001 Sterling L8500, s/n 50049: S/A, Cat C7 Eng., 7-sp., Air Ride Susp., 2000-gal Tank w/ Berkeley Pump, Front/Side/Rear Discharge  
 2000 International 4700, s/n 47343: T444E, 7-sp., 2000-gal Tank, Front & Rear Discharge  
 1996 Mack DM690, s/n 18682: T/A, EN7 275hp Eng., 7-sp., Camelback Susp., 44k Rears, 20K Front, P/S, A/C, 204" WB, 4000-gal Tank w/ Berkeley Pump, Front/Side/Rear Discharge, 101K mi.

**HYDROSEEDER TRUCKS - Day 2**  
 1992 International 4800, s/n 04092: S/A, 4x4, Int'l C170F Eng., 5-sp., Fmn 120SII Hydroseeder w/ Diesel Eng., 135K mi.

**BOOM TRUCKS - Day 2**  
 1997 Ford F800, s/n 31843: Crew Cab, 5.9 Cummins Eng., 6-sp., 2-sp Rear, Pitman 40' Boom w/ Slide Out, 16000 lb. Cap., Lincoln Ranger 8 Welder w/ Leads, 42K mi.

**UTILITY VEHICLES, CARTS & ATVS - Day 2**  
 2006 John Deere TX Gator  
 2009 Polaris Ranger XP700: Dump Bed, 1073 hrs  
 Polaris Ranger 6x6: 700 Twin EFT Gas Eng., A/C, Heat, Winch, 1148 hrs  
 Massimo MSU500 4WD: Winch  
 2014 Kubota RTV500: 1552 hrs

**RELATED ATTACHMENTS - Day 2**  
**TRUCKING QUOTES AVAILABLE**  
 Scrivner Farms: 601-692-5158  
 Freight Mgmt Logistics: 352-303-0561  
 Jones Towing & Recovery: 334-355-6060  
 B2B Transportation: 941-776-3450  
 Journey Logistics: 334-726-3090

**bid live ONLINE**  
**ONLINE BIDDING AVAILABLE**  
 A taxable 2.5% fee assessed on all internet purchases which is capped at \$750 per item.

**RAIN OR SHINE**

**MISCELLANEOUS ITEMS - Day 2**  
 Bandit Intimidator 1890 Chipper: Pintle Hitch (County-Owned)  
 Sullair 3700 Air Compressor: Electric, 3-phase, Variable Speed Drive  
 2006 Ingersoll Rand 185 Air Compressor: Towable, Diesel, 1446 hrs  
 2008 Sullair Air Compressor: 177cfm, Cat Diesel  
 Sullair 185DP02WJD Air Compressor: 4-cyl. Diesel, Portable, 575 hrs  
 Lincoln Vantage 240 Welder: 1507 hrs  
 Miller Bobcat 250 Welder Generator: Trailer-mtd, 10500-watt  
 (4) New Briggs & Stratton 3500W Portable Generators: 4375 Starting Watts, 208cc Gas Eng. m-5-gal. Metal Fuel Tank, 30 Amp, 120V  
 Northstar Pressure Washer on 2006 K-Bar 8' Trailer: Honda 18hp Eng., 200-gal. Tank, Burner  
 (12) Fuel/Oil Holding Tanks  
 1500-gallon Fuel Tank: Trailer-mounted on Skid, Pump 40KW Generator: Diesel  
 (2) 3000-gallon Round Fuel Tanks  
 (4) Wayne 66200 Fuel Pumps  
 (5) 40' & (6) 20' Shipping Containers

**SALVAGE ITEMS - Day 2**  
 1996 Elgin Pelican Street Sweeper, s/n P-21110: JD Diesel, Engine Runs  
 2013 Hyundai HL797-9 Rubber-tired Loader, s/n T000488: Encl. Cab, 20.5x25 Tires, GP Bkt.

**TRUCKING QUOTES AVAILABLE**  
 Scrivner Farms: 601-692-5158  
 Freight Mgmt Logistics: 352-303-0561  
 Jones Towing & Recovery: 334-355-6060  
 B2B Transportation: 941-776-3450  
 Journey Logistics: 334-726-3090

**2016 John Deere 317G (844 hrs)**

**2011 Manitou MT1840 4WD**

**2017 Kubota SSV75 (1002 hrs)**

**www.deancoauction.com**

**AUCTION CALENDAR**  
 Court-Ordered Real Estate Auction - Approx. 137.5 acres to be sold in parcels or as a whole  
**Friday, March 20<sup>th</sup> 2020 at 10:00am**  
 Main Street (US Business 431) - Headland, Alabama 36345  
 For more info contact Donnie W Dean (334) 714-3200 or Julian Morgan (229) 881-2779  
**Huge 2-day Contractors Eq. & Truck Auction**  
**Wednesday, May 20<sup>th</sup> & Thursday, May 21<sup>st</sup> 2020**  
 1042 Holland Ave • Philadelphia, Mississippi