

Absolute Estate Auction

35± Acres With Power & Water

American Auctioneers®

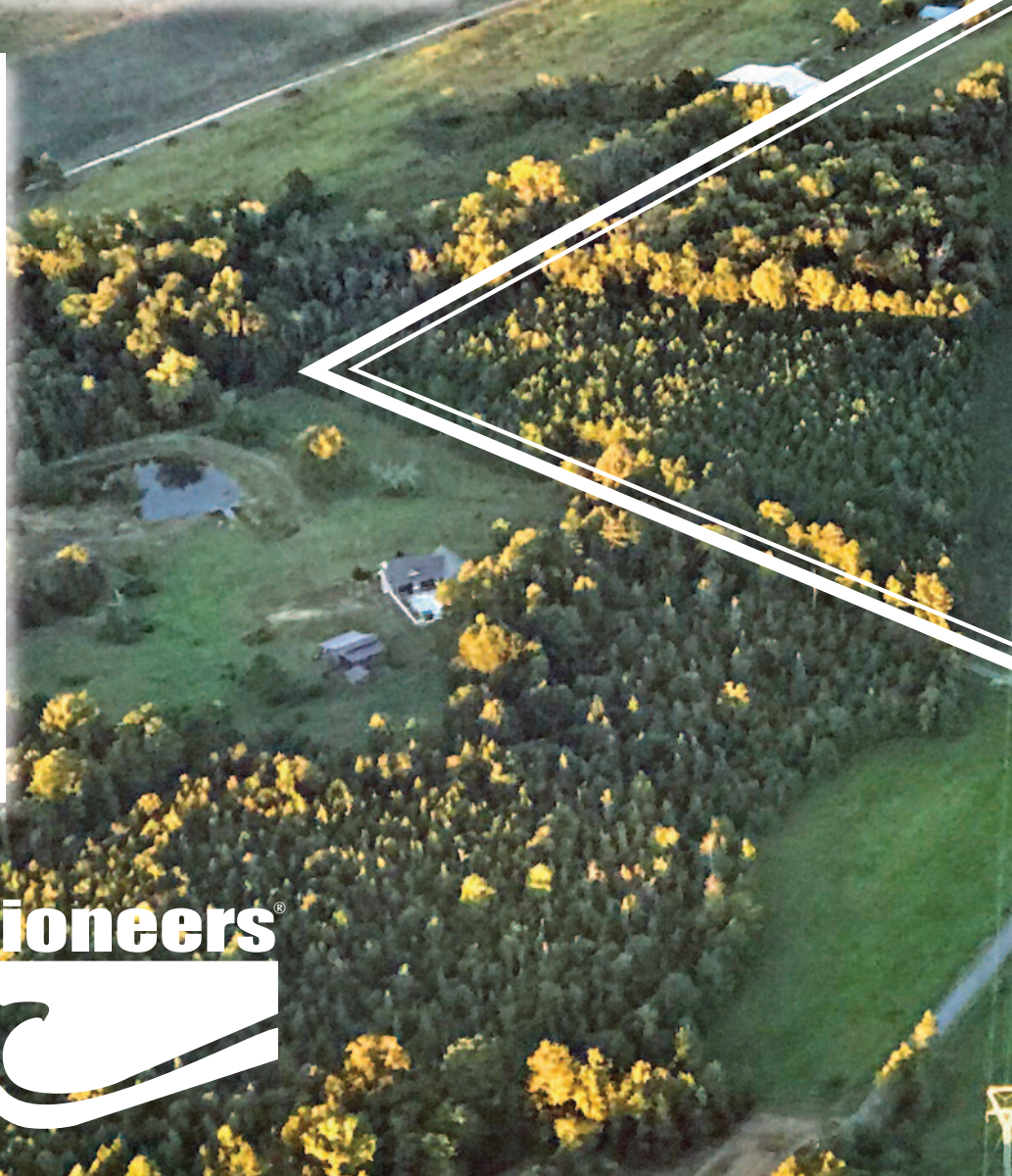
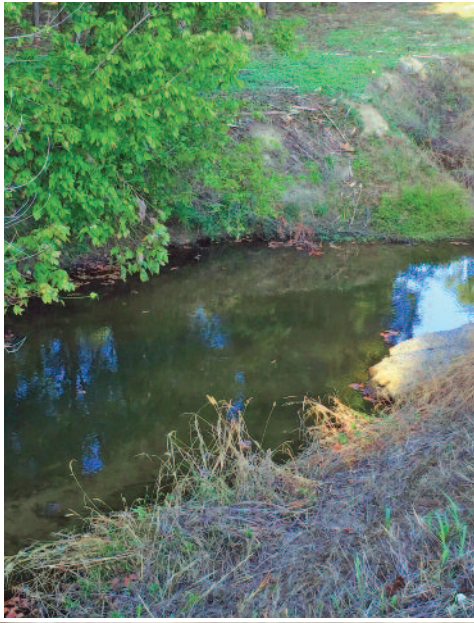
The
American
Way!

866-789-5169 • american-auctioneers.com

Saturday, October 27, 1 PM

The Lora Logan Patty Estate
Centre, Alabama

Absolute Estate Auction



- Abundant Road Frontage, Creek
- Excellent Building Sites, Perfect Mini Farm
- Conveniently Located Between Centre, Alabama and Cave Spring, Georgia
- To Be Offered in Tracts, Combinations of Tracts or as a Whole
- Auction to be held on site under the American Auctioneers tent
- Property can be viewed at any time. For a guided tour of the property, contact American Auctioneers

American Auctioneers®

The
American
Way!

Saturday, October 27, 1 PM



ROAD 45

Property Lines Are Approximate

COUNTY ROAD 162

35± Acres With Power & Water

www.american-auctioneers.com

American Auctioneers®

*The
American
Way!*

1033 West Main, Centre, AL 35960

866-789-5169

american-auctioneers.com



*Saturday,
October 27, 1 PM
35± Acres
With Power &
Water
Centre, AL*

Presorted
First Class
US Postage
PAID
Rome, GA
Permit No. 79



Keith Baldwin, CAI
AL 1416, ALRE 64960,
GAL AUNR2860, GARE 247207
Ron Baldwin, AL 800

Absolute Estate Auction



The Lora Logan Patty Estate

Located in the Friendship Community at the intersection of County Road 45 & County Road 162

Absolute Estate Auction

Saturday, October 27, 1 PM

*The Lora Logan Patty Estate
Centre, Alabama*

Located in the Friendship Community at the intersection of County Road 45 and County Road 162

DIRECTIONS: From Centre, Alabama, take US Highway 411 N approximately 10 miles to County Road 45, turn left on County Road 45, in approximately 1 mile property will be located on left and right side of road.

From Cave Spring, Georgia, take US Highway 411 S approximately 10 miles to County Road 45, turn right on County Road 45, in approximately 1 mile property will be located on left and right side of road.

REAL ESTATE TERMS: 10% Buyers Premium, 10% down day of auction with balance due at closing on or before November 27.

NOTE: All information provided by the seller. It is believed to be correct but not guaranteed by auction company — prospective bidders should rely upon their own inspection. Properties are selling subject to easements, leases, restrictions, covenants, conditions, zoning and all other matters revealed by a current survey or an inspection of the property or contained in public records. Property lines are approximate. Contact our office for precise survey. Broker participation welcome. American Auctioneers, LLC, Auctioneer/ Broker, is acting exclusively as agents for the seller. All announcements from auction stand take precedence over all verbal and printed material. Additional photos, survey and other information available at american-auctioneers.com.

866-789-5169 • american-auctioneers.com