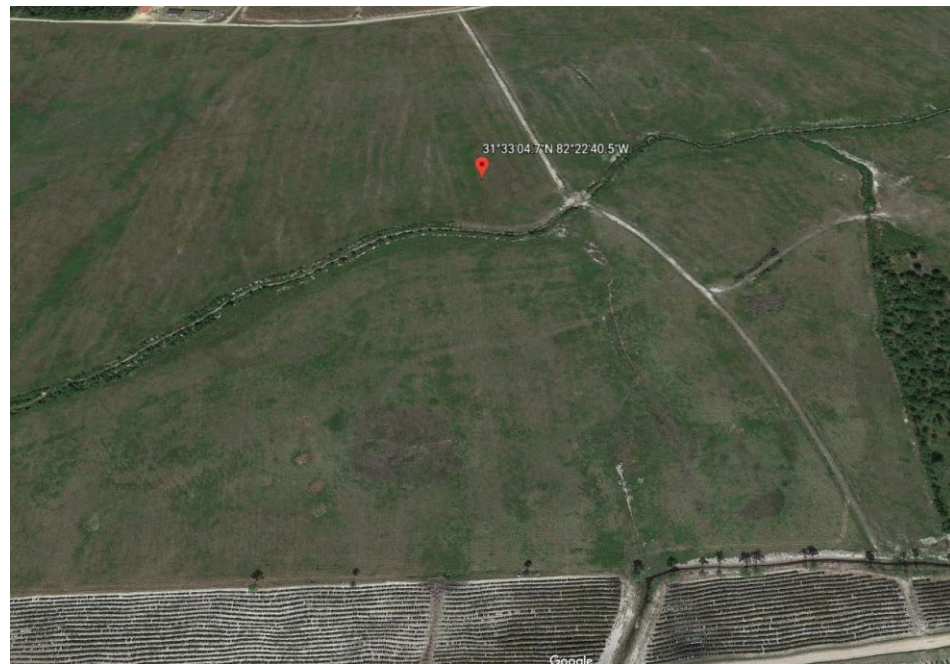


MULTIPLE PARCEL REAL ESTATE AUCTION

SATURDAY, OCTOBER 13, 2018, AT 10:00 AM EDT

AUCTION LOCATION: THE BLUEBERRY WAREHOUSE
199 TOBACCO LANE, ALMA, GA 31510

All Properties to be offered in Tracts, Combinations of Tracts or as a Whole

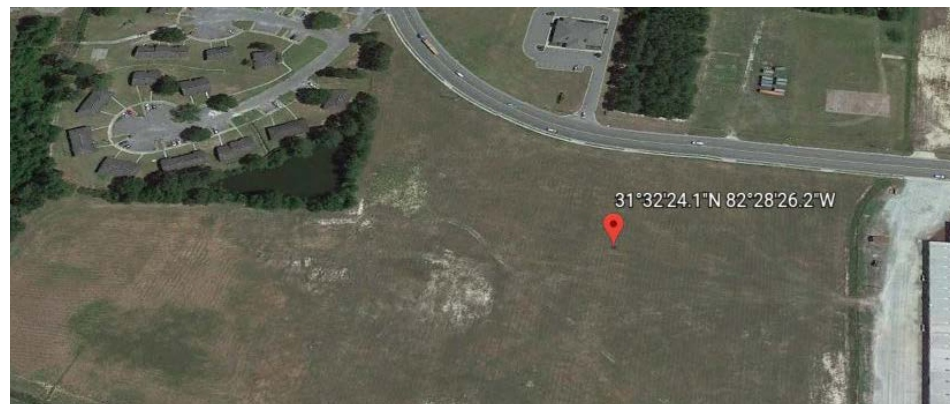


LOCATION 1

238 +/- Acre Blueberry farm
Located off GA Hwy. 32 with
frontage on Caraway Rd.
Alma (Bacon County), Georgia
Rockingham Community
GIS 31°33'01.65"N 82°22'40.49"W

- Located in the heart of blueberry country
- Bordered on the east and west sides by corporate and privately held blueberry farmers
- Three phase power
- Has been cleared and stumped in preparation of planting blueberries
- Will be offered in tracts, combinations of tracts & as a whole

Don't miss the rare opportunity to purchase this special tract of land at your price



LOCATION 2

24 +/- Acres
Located on GA Hwy. 32
Alma, Georgia
GIS 31°32'24.09"N 82°28'26.22"W

- Located within Alma city limits
- All utilities – power, water, sewer
- Abundant road frontage on GA Hwy. 32

This property has an unlimited amount of potential for commercial, agricultural or residential use.



LOCATION 3

31,000 +/- Sq. Ft. Industrial Building & 10 +/- Acres
216 Industrial Drive
Alma (Bacon County), Georgia
GIS 31°33'06.71"N 82°30'39.82"W

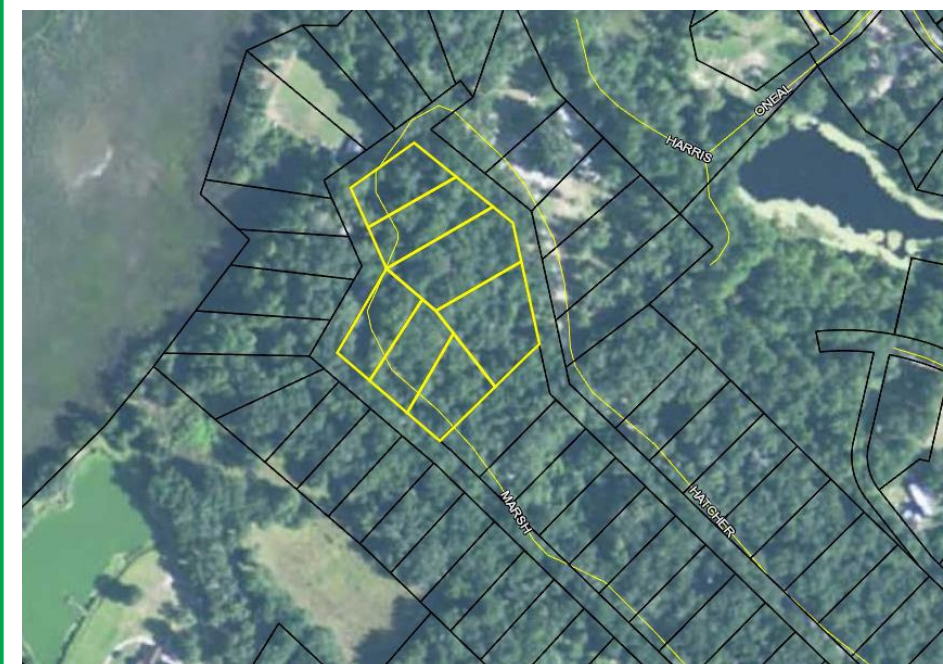
- Located in Bacon Industrial Park
- All utilities – power, water, sewer, natural gas
- Classed as I4 – Industrial
- Formerly United Hospital Laundry Service, an industrial hospital laundry facility
- Frontage on Industrial Dr. and Caribbean Rd.
- 2 miles from the Bacon County Airport

This property has great potential for Industrial/Commercial use.

Selling the Remaining Assets of United Hospital Service



- Several Large Industrial Washing Machines & Dryers
- Hopper Carts
- Tables
- Roller conveyors
- Office Furniture
- Platform Scales



LOCATION 4

7 Restricted Residential Building Lots in Sapelo Oaks Subdivision
Located on Marsh Drive off Johnson Road
Townsend (McIntosh County), Georgia
GIS 31°31'27.09"N 81°22'42.49"W

- Beautiful Residential Building Lots with Moss Covered Oaks Throughout
- Minutes from Sapelo River Public Boat Ramp Home to Some of Georgia's Best Salt Water Fishing
- Minutes from Historic Darien, Georgia
- Convenient to the Marsh, I-95, Fishing, Marinas, Dining and Shopping



ALL PROPERTIES SOLD AT ONE LOCATION

For More Information: Keith Baldwin 256-312-5480

Larry Davis 912-282-5725

GAL 2853 Keith Baldwin, CAI, GAL AUNR2860, GARE 247207

10% Buyers Premium
Financing Available

Call our office or visit our website for additional information!

800.533.0673 ★ rebelauction.net