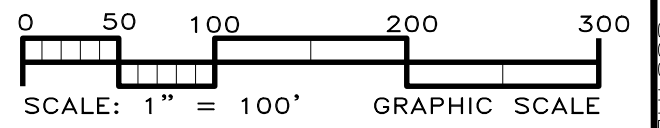


BOUNDARY RETRACEMENT SURVEY FOR:
FERGUSON ESTATE
 LOCATED IN LAND LOT 895, 896, 905, AND 906
 4th DISTRICT, 3rd SECTION
 CITY OF EMERSON, BARTOW COUNTY, GEORGIA

DATE: SEPT. 26, 2018 REV: JOB NO: 18132
 DATE OF FIELDWORK: SEPTEMBER 25, 2018
 DRAWN BY: KNC CHECKED BY: KNC APPROVED BY: KNC



General Notes

1. ALL PROPERTY CORNERS ARE 1/2" REBAR, EXCEPT AS SHOWN.
2. THE FIELD DATA UPON WHICH THIS PLAT IS BASED HAS A CLOSURE PRECISION OF 1" IN 18,888 FEET, AND AN ANGULAR ERROR OF 02" PER ANGLE POINT, AND WAS NOT ADJUSTED.
3. THIS PLAT HAS BEEN CALCULATED FOR CLOSURE AND IS FOUND TO BE ACCURATE WITHIN 1" IN 40,237 FEET.
4. EQUIPMENT USED: TOPCON 3005W, TOTAL STATION, WITH DATA COLLECTOR.
5. RIGHTS OF WAY ARE BASED UPON PINS FOUND AND/OR CENTERLINES OF PATHS OF TRAVEL.

Conformity Statement

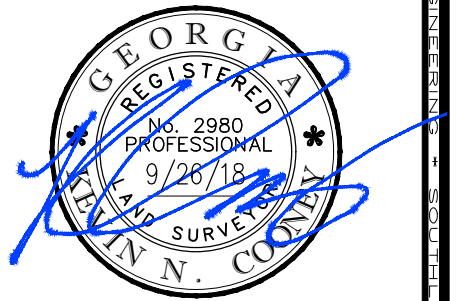
THIS SURVEY WAS PREPARED IN CONFORMITY WITH THE TECHNICAL STANDARDS FOR PROPERTY SURVEYS IN GEORGIA AS SET FORTH IN CHAPTER 180-7 OF THE RULES OF THE GEORGIA BOARD OF REGISTRATION FOR PROFESSIONAL ENGINEERS AND LAND SURVEYORS AND AS SET FORTH IN THE GEORGIA PLAT ACT O.C.G.A. 15-6-67.

KEVIN COONEY - GA PLS 2980

Recording Statement

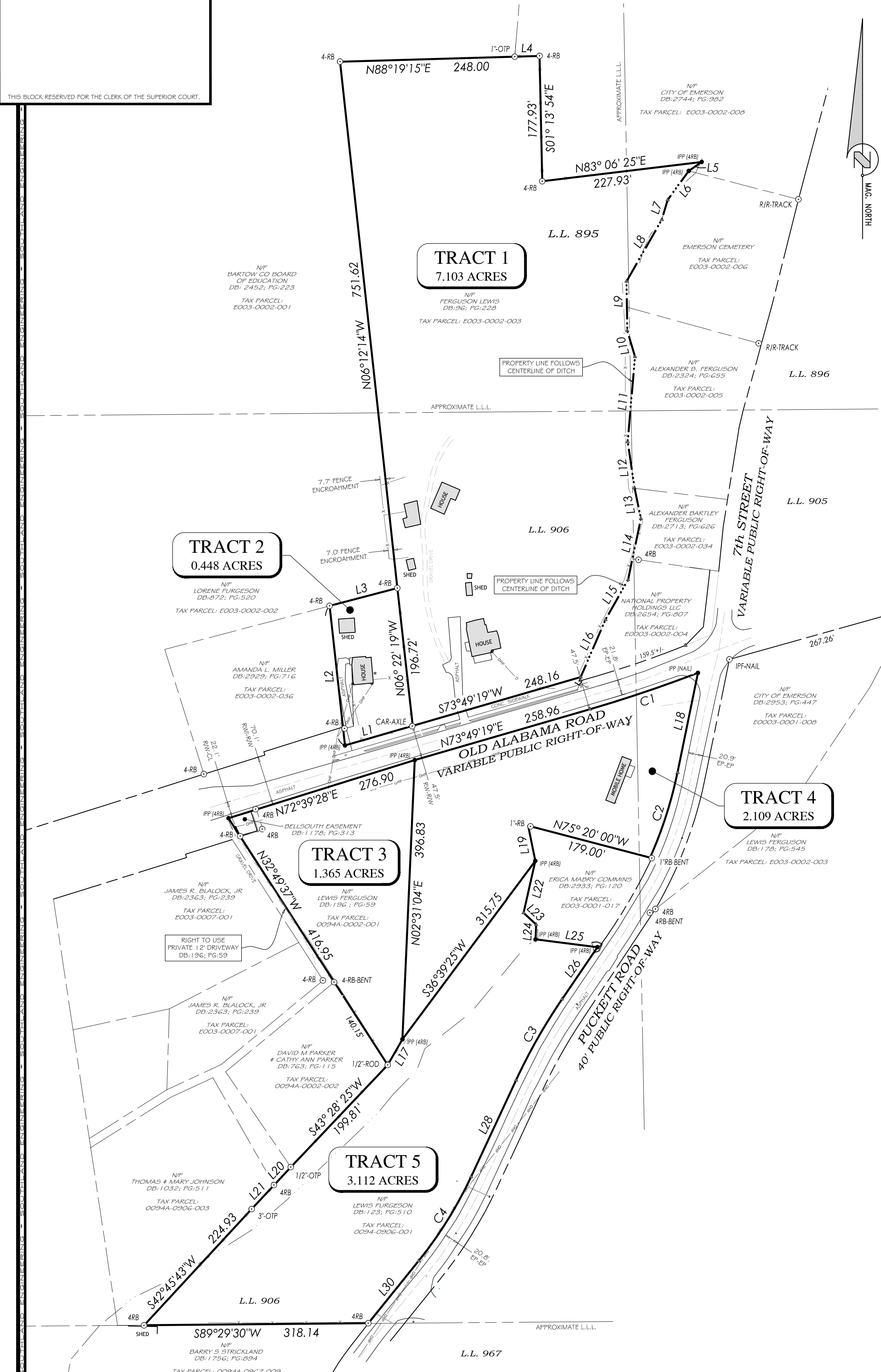
THIS PLAT IS NOT REQUIRED TO BE APPROVED BY A GOVERNING AUTHORITY, AND IS NOT SUBJECT TO GEORGIA CODE SECTION 15-6-67(d).

KEVIN COONEY - GA PLS 2980



○ = IRON PIN FOUND	△ = DOUBLE WING CATCH BASIN	⊕ = GAS VALVE	⊙ = SEWER MANHOLE	⊚ = POWER POLE
● = CONCRETE MON.FOUND	▽ = SINGLE WING CATCH BASIN	⊗ = GAS METER	○ = CLEAN OUT	⊙ = GUY WIRE
⊙ = IRON PIN PLACED	□ = JUNCTION BOX	⊕ = TELEPHONE MANHOLE	⊙ = WATER VALVE	⊙ = ELECTRIC METER
⊕ = BENCHMARK	⊕ = CURB INLET	⊕ = ELECTRIC MANHOLE	⊙ = WATER METER	⊕ = TRANSFORMER
⊕ = PHOTO REFERENCE	⊕ = YARD INLET	⊕ = TELEPHONE PEDESTAL	⊕ = FIRE HYDRANT	⊕ = LIGHT POLE
⊕ = EXCEPTIONS	⊕ = DROP INLET	⊕ = SIGN	⊕ = IRRIGATION CONT. VALVE	⊕ = FLOW ARROW
⊕ = PARKING BOLLARD	⊕ = HEADWALL		⊕ = WELL	⊕ = MAILBOX
— = STORM PIPE	— = OHP	— = OVERHEAD PWR.	— = WATER LINE	— = COMM. LINE
— = SEWER PIPE	— = FENCE LINE	— = GAS LINE	— = UGP	— = UNDERGROUND PWR.

THIS BLOCK RESERVED FOR THE CLERK OF THE SUPERIOR COURT.



LINE TABLE		
LINE	BEARING	LENGTH
L1	S73°49'19"W	100.00
L2	N06°19'34"W	199.36
L3	N75°17'50"E	99.43
L4	N88°19'16"E	35.19
L5	S55°16'08"W	22.21
L6	S36°05'28"W	51.10
L7	S16°17'35"W	29.28
L8	S29°48'23"W	100.83
L9	S00°54'58"E	69.74
L10	S16°25'52"E	38.81
L11	S04°56'19"W	121.19
L12	S08°28'20"E	66.32
L13	S11°42'24"E	44.40
L14	S11°50'14"W	88.67
L15	S29°26'58"W	65.11
L16	S23°25'20"W	88.88
L17	N29°45'21"E	42.00
L18	S11°33'17"W	144.28
L19	N11°30'00"W	50.93
L20	S43°05'40"W	35.00
L21	S43°05'41"W	46.22
L22	S12°42'46"W	75.57
L23	S46°55'15"E	24.51
L24	S02°20'38"W	20.98
L25	S82°48'43"E	88.52
L26	S34°13'19"W	89.28
L28	S24°58'02"W	151.31
L30	S38°52'29"W	113.85

CURVE TABLE				
CURVE	LENGTH	RADIUS	DIRECTION	CHORD
C1	161.72	1899.17	N71°22'57"E	161.67
C2	127.32	580.52	S17°50'17"W	127.07
C3	132.39	819.63	S29°35'40"W	132.24
C4	140.87	580.37	S31°55'15"W	140.53