



643 Kriner Road, Chambersburg, PA 17202  
 Phone: (717) 263-6512  
 (800) 315-3265,  
 Fax: (717) 263-0188  
 Email: bid@gatewayauction.com



Lot #  
147

**Model Trains**  
**Sat, April 27 at 10 AM**  
 Preview Fri, 3-5 PM

[www.GatewayAuction.com](http://www.GatewayAuction.com)

# GATEWAY GALLERY AUCTION

## Model Trains

### April 27 at 10 AM



Lot #  
55



Lot #  
6



Lot #  
173



Lot #  
106



Lot #  
147



Lot #  
151

**Preview Friday 3-5 PM**

[www.GatewayAuction.com](http://www.GatewayAuction.com)

Public Auction

## **Model Trains & Accessories**

Will sell from two estates at GATEWAY GALLERY AUCTION - 643 Kriner Rd, Chambersburg, PA on:

**Saturday – April 27 at 10:00 AM**  
**(395) Cataloged Lots**

**MODEL TRAINS:** HO scale, standard gauge, Prewar Lionel O/027 gauge. Highlights include; **Red Ball:** Brass Erie Built FM A-B-A Diesel Set; **Bowser:** Executive Line Baldwin PRR AS-616 #8972 w/Factory LOK Sound DCC Ready 21 Pin Plug w/Antenna; **Proto 2000:** NYC E8 Diesel #4070 w/(5) IHC NYC Passenger; **Broadway Limited:** Paragon 3 Rolling Thunder Sound PRR J1 2-10-4 #6470 Sound/DC/DCC; **Walthers:** 4 Door 86' Hi-Cube Boxcars; **Lionel Std Gauge:** Dark Green 380E Passenger Set; **Lionel Std Gauge:** 1835E 2-4-2 Locomotive and Tender; **Pride Lines:** (Ives) Glass Dome Station (Repro); **Lionel Classics STD G:** Brown State Set: 13107 (1-408E) Locomotive (Mailing Carton); 13221 (2412) California; 13422 (2413) Colorado; 13423 (2414) Illinois (Mailing Carton); 13424 (2416) California OB; **Lionel Std Gauge:** 116 Passenger Station; **Walthers:** (4) Heavyweights: C&O Diner and (3) C&O 70' Baggage; **Prewar Lionel:** Baby Blue Comet Set; 263/2263W Loco and Tender, 613 Pullman, 614 Observation, 615 Baggage; **Prewar Lionel:** Milwaukee Road Hiawatha Set: 250E/250W Loco and Tender (Tender Looks Restored), 782 Coach, 783 Coach, 784 Observation; **Prewar Lionel:** 227 (8976) PRR B6 Switcher w/2227B Tender (1 Red Marker Missing on Loco); **Walthers:** Proto USRA NKP 0-8-0 Steam Switcher #206 With Tsunami Sound and DCC; **Walthers:** (5) Amtrak Phase 2 Budd Passenger Cars; Grill Diner, 24-8 Slumber Coach, 10-6 Sleeper, 46 Seat Coach  
**UNCATALOGED:** Large selection of Lionel Standard Gauge, O and O27 Track, train accessories, standard gauge switches, ZW transformer, RR books, over (100) pieces of HO rolling stock, 1000s HO parts, transformers, railroad CDs, and more!

**AUCTIONEER'S NOTE:** Cataloged items begin promptly at 10 AM. Uncataloged traylots sold after catalog items - no online bidding for uncataloged traylots. Complete catalog online. Printed catalog upon request. Live online bidding available through Invaluable/AuctionZip. Absentee online bidding available on HiBid/our website.

**Preview Friday, April 26 from 3-5 PM**  
**and Sale Day from 8 AM.**

**TERMS:** Cash. Visa/MC/AMEX/Discover accepted. Live, in-house & absentee online bidding on HiBid - 13% buyer's premium discounted 3% for cash or approved check. Live online bidding on Invaluable or AuctionZip - 20% buyer's premium. Statements made day of sale take precedence.

# *Notes*

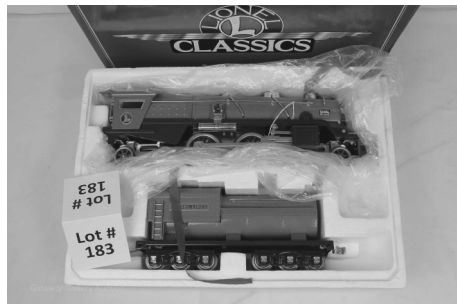
**GATEWAY GALLERY AUCTION INC**

Phone (717) 263-6512, (800) 315-3265, AY002190, AH002001

**Auctioneer John F. Kohler, Jr. AU000507L**

**Auctioneer Heather R. Kohler AU005651**

# Complete Photo Gallery at GatewayAuction.com



**SHIPPING POLICY:** We provide limited packing and shipping for small, easy to box items. Items packed by our staff will be shipped USPS Priority Mail, insured for bid price of item. **Minimum shipping and handling fee is \$20. Buyer is responsible for ALL packing and shipping costs.** See our terms and conditions on our website for further shipping information.

**All items sold AS IS with no warranty or guarantee. It is the responsibility of all bidders to satisfy themselves as to condition.**

**GATEWAY GALLERY AUCTION INC**

Phone (717) 263-6512, (800) 315-3265, AY002190, AH002001

**Auctioneer John F. Kohler, Jr. AU000507L**

**Auctioneer Heather R. Kohler AU005651**

## Lots 1-106 HO Scale & All Items Boxed Unless Noted, Many New

- |   |  |    |  |
|---|--|----|--|
| 1 | (HO Scale) Atlas: Master Series NYC GP-40 #3014 DCC Equipped; (10) Athearn NYC 2 Bay Hoppers Kadees & Metal Wheels   | 10 | Proto 2000 Reading Caboose All Kadees Metal Whls (HO Scale) Proto 2000: (8) 8000 Gal Tankers; GATX, (3) UTLX, (4) Undec: (3) J&L Decals, Tydol Veedol Decals Kadees Metal Whls |
| 2 | (HO Scale) Proto 2000: Erie E8 #827 Passenger Diesel; (6) IHC/AHM Coaches; Erie BPO, (2) Baggage, Erie Lack OBS, (2) Lackawanna Coaches  | 11 | (HO Scale) Bachmann: B&O FA2 and FB2 Diesel Set Both w/DCC/Sound   |
| 3 | (HO Scale) Stewart Hobbies: Undecorated U25B w/ Kadees; Roco (5) REA Track Cleaning Boxcars; 12 Whl Milw Flat All  | 12 | (HO Scale) Proto 2000: N&W/ NKP Coal Train; N&W GP-9 #622; (5) Athearn NKP 2 Bay Hoppers; Atlas NKP Caboose #770 Kadees Metal Wheels   |
| 4 | (HO Scale) Proto 2000: PRR Railway Express Train; PRR E7 Diesel #5841, Red Caboose (4) PRR REA Boxcars, Bowser PRR Caboose #476999 Kadees & Metal Wheels                                 | 13 | (HO Scale) Athearn: (5) C&O 2 Bay Hoppers; (5) L&N Composite Side 2 Bay Hoppers Kadees & Metal Whls  |
| 5 | (HO Scale) Athearn: NYC GP -38 #6126 Quick Plug Equipped; Lambert Associates Brass NYC Bay Window Caboose #21035 Kadees  | 14 | (HO Scale) Genesis: PRR Phase II GP9 #7138 w/ Tsunami Sound  |
| 6 | (HO Scale) Red Ball: Brass Erie Built FM A-B-A Diesel Set; Both A Units Powered, B Unit Unpowered  | 15 | (HO Scale) Proto 2000: SPSF GP30 Diesel w/Sound and Phase II DCC; (5) Athearn ATSF 2 Bay Hoppers   |
| 7 | (HO Scale) Bachmann: NYC Milk Train: NYC 2-6-0 #1904 DCC/Sound; Walther's RPO, (4) Roundhouse Milk Cars; (2) CV and (2) B&M  | 16 | (HO Scale) Kato: Undec RS-3 NOB; Athearn (5) Erie 2 Bay Hoppers; Erie B/W Caboose #C322 Kadees Metal Whls  |
| 8 | (HO Scale) Atlas: Undecorated RS-11 Diesel; (7) Front Range Rolling Stock: (2) RDG and PRR Grain Hoppers, (2) C&NW Boxcars, DT&I Boxcar, Undec Boxcar/SCL Decals All w/Kadees Metal Whls | 17 | (HO Scale) Athearn: B&O GP35 #3504 W/DCC Quick Plug; Atlas 2-Bay Hoppers (3 Pack B&O), (2) Tenn CTRL, Jersey CTRL, Athearn B&O B/W Caboose #C-3000 Kadees Mtl Whls             |
| 9 | (HO Scale) Atlas: Undecorated GP-7 Diesel; (6) Accurail Rdg 2-Bay Hoppers.   | 18 | (HO Scale) Athearn: Undec GP -35 Diesel, C&O Gon, Dia Chem Tanker, NYC Cov Hop, EL Mill Gon, Erie B/W Caboose #C-307   |
|   |  | 19 | (HO Scale) Athearn: Undec GP -35 Diesel, TPW Boxcar, C&O Gon, Dia Chem Tanker, NYC Cov Hop, EL Mill Gon Kadees Mtl Whls  |
|   |  | 20 | (HO Scale) Bachmann Plus: Undec GP-35 Diesel; Accurail 2 Bay Hoppers; (6) C&O; (6) DL&W Kadees Mtl Whls  |

21	(HO Scale) Bowser: Executive Line Baldwin PRR AS-616 #8972 With Factory LOK Sound DCC Ready 21 Pin Plug w/Antenna		POWER FRAME WARPED) E7 PRR B Unit Unpowered #5862B; Spectrum (2) PRR Edgar Allan Poe Pullmans, Coach #4585, Observation #180 Kadees		Hobbies PRR DS-4-4-2-1000 Diesel #9178;PRR Work Cabooses, Undec Brownhoist Crane and Tank Car, M/W Gon, (2) Hoppers, roundhouse M/W Disco Dump, AHM		Kits Both Powered; AHM Amtrak Sleeper; (2) Different Bowser Amtrak Cabooses #14011 and #14005 Kadees Mtl Whls
22	(HO Scale) Proto 2000: (8) 52'6" Drop End Mill Gons: EL, RI, Erie, SLSF, PM, NKP, NYC, Undec (DT&I Decals) Kadees Mtl Whls	31	(HO Scale) Proto 2000: NYC Passenger Train: NYC E7 Diesel #4009/DCC Plug Equipped; Spectrum (3) Coaches (1 P&LE); Diner Kadees		Snowplow/Gon, M/W Crane Tender, (2) Flats/Catenary Towers, Roco GN Crane, Kadees Mtl Whls	391	(HO Scale) Walthers: (5) Amtrak Phase 2 Budd Passenger Cars; Grill Diner, 24-8 Slumber Coach, 10-6 Sleeper, 46 Seat Coach
23	(HO Scale) Train Miniature: Swift, Armour, Wilson Stock Cars: Erie, Sou, Katy Stock Cars; Western Union, Sand Springs, (3) MMM Boxcars, Mich Alk Reefer (4) have Kadees Mtl Whls	32	(HO Scale) Red Cabooses: (10) PRR X-29 Boxcars Kadees Mtl Whls: (2) REA Circle Keystone, (2) Merch Service, (2) Shadow Keystone Calendar #'s, (4) Shadow Keystone	383	(HO Scale) Proto 2000: PRR FA2 Diesel #9623 and FB2 Diesel #9620B (Both Powered); Lehigh Valley FA2 Diesel #536 and FA2 Diesel #588 Both Unpowered; LV Cabooses # 95067 (NO BOXES)	392	(HO Scale) Atlas: PRR Passenger Train: FP-7 Diesels #9835 and #9865 In Brunswick Green; (5) Walthers Budd Passenger Cars: RPO, Baggage, Baggage/Dorm, Grill/Diner, Lounge Kadees
24	(HO Scale) Misc Kits: Gloor Craft PRR Hopper, (2) Auto Boxcars, Ambroid (2) Erie- Susq Hoppers, Quality Craft PRR Covered Hopper and NYC Deep Well Flat, Red Ball (2) PRR Reefers, CCS (2) REA/GARX Express Reefers, PRR Express Reefer	33	(HO Scale) Proto 2000: Southern Passenger Train: Sou E8 Diesel #6910; Walthers Budd Sou Diner, RPO, Sleeper Tagaloo River	384	(HO Scale) Proto 2000: Nickel Plate GP30 #909 w/(13) Accurail 2 Bay Hoppers; Burl, L&N, DT&I, (2) LV, (2) Mopac, (4) Wabash, Montour, NKP Kadees Mtl Whls	393	(HO Scale) Walthers: C&O Passenger Cars: (3) 52 Seat Coaches; (2) Fluted Without Skirts Coaches
25	(HO Scale) Proto 2000: PRR GP-9 Diesel #7160; (6) RBM PRR H25 Sawtooth Quad Hopper Kits/Decals Kadees Mtl Whls	34	(HO Scale) Athearn: PRR SD45 and PRR SD9 Diesels; (10) 86' Hi-Cube Boxcars All Undec w/(9) PRR Decals (1) BN Decal Cars w/Kadees Mtl Whls	385	(HO Scale) Broadway Limited: PRR Alco RSD-15 Diesel #8613 Paragon Series With Quantum QSI Equipped Sound and DC/DCC	394	(HO Scale) Proto 2000: C&O F7A Diesel #7001 and F7B Diesel #7500 Both With Factory Installed DCC and Sound
26	(HO Scale) Atlas: Trainman (10) 2 Bay Hoppers: (2) D&H, (2) Milw, (2) NKP, (2) South Buffalo, (2) P&E	35	(HO Scale) Proto 2000: (2) NYC GP-20 Diesels #2109 and #2112 Both w/DCC Plugs	386	(HO Scale) Red Cabooses: (7) US Army Flats, PRR M/W Gray Boxcar, PRR War Bonds Boxcar, NYC Boxcar, Undec Boxcar/PRR Decals	395	(HO Scale) Walthers: NYC 0-8 -0 Steam Switcher # 7815 w/ Tsunami Sound and DCC
27	(HO Scale) Atlas: RSD-12 NKP Diesel #326; RS-11 Seaboard Coast Line Diesel #1202 Kadees	36	(HO Scale) Accurail: (10) Rolling Stock: (9) Wood Reefers: (2) CN, NYC, GB&W, Milw, NY Despatch, Swift, LV, Cudahy; Proto 2000 MEC Cabooses NOB; Kadees and Mtl Whls	387	(HO Scale) Spring Mills Depot: B&O Wagon Top B/W Cabooses #C2406; Bachmann B&O H16-44 Diesel #928		
28	(HO Scale) Branchline Trains: (7) Blueprint Series Rolling Stock: (4) Reefers: C&NW, Milw, (2) Oscar Meyer: (3) Boxcars: LV, NC&ST L, P&WV Kadees Mtl Whls	37	(HO Scale) Atlas: Master Series Alaska Railroad GP40-2 Diesel #3003 w/Quantum System QSI Sound/ DC/DCC Mode	388	(HO Scale) Roundhouse: (12) Rolling Stock; B&O, EJ&E, C&NW, C&O REAX, (2) Undec With B&O, NP Decals Boxcars; (4) Shorty Hooker Tankers; (2) N&W Gons		
29	(HO Scale) Stewart Hobbies: (2) Undecorated GE U25B Phase IV Diesels Kadees	38	(HO Scale) Walthers: (7) Airslide Hoppers: (3) Golden Loaf, B&O, (3) Undec With Nat'l Biscuit, Wabash, and Burlington Decals Kadees and Mtl Whls	389	(HO Scale) Bachmann: P&LE S-4 Diesel #8662 w/DCC Sound On Board; Proto 2000 Alco/GE FA2 Diesel Demonstrator #1602D Unpowered NO BOX		
30	(HO Scale) Proto 2000: PRR Passenger Train: PRR E8 Diesel #5887 (CAB OK)	39	(HO Scale) Bowser: (6) PRR Rolling Stock: Round Roof Boxcar, H-21 Hopper, Turtle	390	(HO Scale) Stewart : (2) Amtrak RS-3 Alco's Both #123		

360	(HO Scale) Walthers: (3) 2-Packs of 46' USRA Gons: (2) NYC and W&LE		Train: AS-616 #8968 w/(8) Triple Hoppers		Roof Boxcar, K-9 Stock Car, 50' Flat, N-8 Caboose	50	(HO Scale) Magnuson Models: (8) Vehicle Kits: (5) Fords: 41 P/U, Stake Body, 56 Tractor, 53 Tanker, 56 Delivery: (3) Macks; (2) Model R, Tanker
361	(HO Scale) Walthers: (2) 2-Packs of PRR Express Reefers: June 1945-Aug 1945 Scheme and Post-War Paint Scheme Kadees and Mtl Whls	372	(HO Scale) McKean Models: (8) Undec Boxcars w/PRR, Rutland, Frisco, E&LS, L&N, C&NW, UP, Lancaster & Chester Decals	40	(HO Scale) Atlas: PRR S-4 #8434 and PRR S-2 #8073 Diesels Kadees		
362	(HO Scale) Bachmann: B&O Alco FA2 and (2) FB2 Diesels All Powered w/DCC/Sound on Board	373	(HO Scale) Atlas: Silver Series Virginian Trainmaster #67 DCC Ready With Plug; (3) VGN, (4) CCC&ST L, (3) Susq 2 Bay Hoppers Kadees Mtl Whls	41	(HO Scale) Red Caboose: (10) Boxcars: B&O, SBD, PRR, NYC, NKP, N&W, (4) Undec: B&M, RI, Sbd, MC, Erie Decals	51	(HO Scale) Magnuson Models: (6) '53 REA Delivery Trucks; DP Coal Conveyor and Cat Dozer; DJH PRR Test Car Kit w/Kadees Mtl Whls
363	(HO Scale) Walthers: 2 Pack of NYC and Erie Lackawanna Express Cars; 2 Pack of Monon Troop Kitchen Conversion Cars Kadees Mtl Whls	374	(HO Scale) Walthers: (4) 86' TTX TOFC Flats: (2) Milw, (2) NYC, (2) PRR Tructrain, (2) REAX 40' Trailers	42	(HO Scale) Proto 2000: SPSF GP30 #2752 and BN Hi-Nose GP20 #2014 Both w/ Factory Installed DCC and Sound	52	(HO Scale) Broadway Limited: Paragon 2 Series PRR E8A #5809 w/Paragon 2 Sound/DC/DCC
364	(HO Scale) Walthers: Proto USRA NKP 0-8-0 Steam Switcher #206 With Tsunami Sound and DCC	375	(HO Scale) Bowser: V-1000 Chassis w/Sound/DCC; (9) 2 Bay Hoppers: (3) Westmoreland, (6) Berwind Kadees Mtl Whls	43	(HO Scale) Front Range: (7) Boxcars: (2) GM&O, SCL/ L&N, (2) SF, MP, SOU Decals for Wabash, Seaboard Air Line, N&W, C&EI Kadees and Mtl Whls	53	(HO Scale) Walthers: 1953 Era PRR Broadway Limited Cars: Creek Series 12 Dplx DB Sleeper, RPO Baggage, View Series Buffet/Lounge/ OBS, Harbor Series 2 Bdrm Buffet/Lounge
365	(HO Scale) Walthers: (2) N&W Baggage; Per Marquette Baggage; B&O 10-5 Sleeper; NYC 64 Seat Coach Kadees Mtl Whls	376	(HO Scale) E&B Valley Railroad: (12) 65' Gondolas: Milw, WM, (2) N&W, Rdg, Lack, DRGW, SP, (2) P&LE, (2) Undec w/Rdg Decals	44	(HO Scale) Front Range: (10) Boxcars: CMO, SF Scout, C&O, C&EI, C&NW, DT&I, GTW, Lack, Erie, Rdg w/ Decals For Linde, C&IM, C&S, Buff CRK Kadees Mtl Whls	54	(HO Scale) Atlas: Master Series Gold Boston & Maine HH660 Diesel #1162 With Quantum System Sound and DC/DCC Operation
366	(HO Scale) Walthers: Proto (2) NYC USRA Gondolas; D&H, PRR B&O Gondolas Kadees Mtl Whls	377	(HO Scale) Bowser: V-1000 Chassis With Sound/DCC; (7) Hoppers: (2) LV 2 Bay, (2) WM 2 Bay, (3) PC: (2) Yellow, Black 4 Bay	45	(HO Scale) Atlas: Trainman (2) NYC RS-32 Diesels #8036 and #8040	55	(HO Scale) Proto 2000: NYC E8 Diesel #4070 With (5) IHC NYC Passenger Cars: (2) Diners, Coach, RPO/ Baggage, Maureen Valley 10-6 Sleeper
367	(HO Scale) Misc Kits: (4) Train Miniature: (2) Erie Boxcars; (2) Reading Boxcars; Branchline NKP Covered Gon, PPG Chem Tanker, Seaboard Boxcar NOB; Golden Spike Burlington Reefer; Front Range EJ&E Boxcar	378	(HO Scale) Atlas: Undec S-4 Diesel Switcher; (9) C&BT Shops Boxcars; B&O, Burlington, B&O Timesaver, PRR, (5) Undec; PRR, Rdg, GTW, NH, NC&ST L Decals	46	(HO Scale) Stewart Hobbies: (12) Triple Hoppers: (5) Erie Lackawanna: (7) New York Central Kadees Mtl Whls	56	(HO Scale) Atlas: Master Series Silver N&W C420 Diesel #415 With DCC 8 Pin Socket; N&W Caboose #530331 Kadees and Mtl Whls
368	(HO Scale) Misc Kits: (4) Model Power Parish Steel Flats/Auto Frames; (3) JJM Auto Frame Loads; IMWX (3) Undec Boxcars w/(2) IHB and NKP Decals	379	(HO Scale) Walthers: (4) Flats: (3) Wabash, TTX 75' TOFC Flats With (2) P I E, (2) I C X, (2) B&O, (2) SP 32' Trailers	47	(HO Scale) Bowser: Executive Line PRR Baldwin S-12 Switcher #8745 With Factory Equipped Loksound & 8 Pin Plug For DCC	57	(HO Scale) Walthers: C&O (4) Classic Heavyweight Baggage Cars
369	(HO Scale) Overland Models: Brass NYC "1900" Wood Sheathed Caboose #19044	380	(HO Scale) Bowser: Executive Line PRR Baldwin S-12 Switcher #8745 With Factory Equipped Loksound & 8 Pin Plug For DCC	48	(HO Scale) Stewart Hobbies: (12) C&O 12 Panel 3 Bay Hoppers Kadees Mtl Whls	58	(HO Scale) Bowser: Executive Line PRR Baldwin VO-1000 Diesel #5915 w/ LOKsound w/(9) Walthers PRR 70 Ton Hoppers and Bowser N-5 Caboose W/PRR Decals Kadees Mtl Whls
370	(HO Scale) Bachmann: Spectrum Undec SD45 Diesel and Santa Fe GE 44 Tonner #460 Kadees	381	(HO Scale) Con-Cor: Chessie Boxcar, Burlington and (3) Undec Hoppers; PRR Airslide Hopper; GN, (2) Undec 60' Boxcars (Rdg Decals) 4 NOB	49	(HO Scale) Magnuson Models: (5) Vehicle Kits: 48 Dia T, 56 Ford Tractor, GMC Step Van, 56 Ford Delivery, Mack Coal Truck: (3) Woodland Scenics; D-7 Dozer, Insley Backhoe, Cat Traxcavator		
371	(HO Scale) Stewart: PRR Coal	382	(HO Scale) Misc Kits: Stewart				

59	(HO Scale) Walthers: (6) Tankers: Dow, Deep Rock, UTLX, Phil 66, Conoco, Wyandotte (2) With USAX Decals: MP, (2)Undec Boxcars USAX Decals, GACX Airslide Hopper Kadees Mtl Whls	69	(HO Scale) Roundhouse: (10) TTX 62' Flats With Kadees Mtl Whls; (9) Boley Tank Loads; (3) Die-Cast Tank Loads; (6) Life-Like Tractor Loads	342	Digital Sound OB (O/027 Gauge) Prewar Lionel: (2) Type Z 250 Watt Transformers		<b>Lots 349-395</b> <b><u>HO Scale &amp; All Items Boxed Unless Noted, Many are New</u></b>
60	(HO Scale) Proto 1000: PRR C-Liner AB Diesel Set #9448A and #90448B	70	(HO Scale) Proto 2000: PRR RS27 Diesel #2408 With Factory Installed DCC and Sound	343	(O/027 Gauge) Louis Hertz Books: All 1st Editions: Collecting Model Trains; Messrs. Ives Of Bridgeport (Autographed); Riding The Tinplate Rails	349	
61	(HO Scale) Accurail: (12) 2 Bay Hoppers Kadees and Mtl Whls: (5) C&O, (3) P&WV, (2) Interstate, B&O, WM	71	(HO Scale) Atlas: Trainman (6) 2-Bay Hoppers: 3 Pack L&N, D&M, (2) P&LE: Southern 3 Bay	344	(O/027 Gauge) Railroad Books: Atlantic Coast Line Passenger Service; Hiawatha Story; British Main Line Services; Bells And Whistles In Old Perry; Wabash; Coach, Cabbage & Caboose; The 400 story	350	(HO Scale) Proto 2000: E6B Southern B Unit; (3) Undec E7B's; All Unpowered
62	(HO Scale) Atlas: Silver Series Norfolk And Western Trainmaster #171 With DCC 8 Pin Socket; (12) Roundhouse N&W 70 Ton Hoppers With Kadees and Mtl Whls	72	(HO Scale) Genesis: PRR GP-9 Diesel #7154 Phase II w/Tsunami Sound	345	(O/027 Gauge) Railroad Books: Locomotives in My Life; Eastern Steam Pictorial; The Soo Line; The Mohawk That Refused To Abdicate; The Nickel Plate Story; More Classic Trains; Texas & Pacific Railway	351	(HO Scale) E&B Valley Railroad: (3) Clinchfield Covered Hoppers; (2) PRR Covered Hoppers; (2) DL&W Covered Hoppers; (2)Eastern Car Works Mill Gons Undec With PRR Decals (2) E&B Gons; SOO and Undec
63	(HO Scale) Accurail: (5) Autoracks With Kadees Metal Whls: (2) PRR Bi-Level, PRR Tri-Level, DT&I Bi-Level, NYC Tri-Level	73	(HO Scale) Tichy Train Group: (10) Undec Boxcars With P&LE, C&WC, C ST P, Geo, RS&P, (2) DT&I, SLSF, Wab, CP Decals; Undec Tanker PRR Decals; Kadees Mtl Whls	346	(O/027 Gauge) Railroad Books: Lincoln Land Traction; Henry Huntington And The Pacific Electric; Traction Classics Vol 1 and Vol 2; Illinois Terminal Electric Years; Remember When Trolley Wires Spanned The Country	352	(HO Scale) Proto 1000: NYC Passenger Train: Proto 1000 Erie Built Diesel #4401 Kadees and With 8 Pin Plug; Walthers RPO, (3) 4-4-2 Sleepers; (2) 10-5 Sleepers
64	(HO Scale) Stewart Hobbies: PRR Baldwin DS-4-4-1000 Diesel With DCC Plug; (12) Walthers PRR H-21 4 Bay Hoppers; Walthers PRR N5c Caboose #477911 Kadees Mtl Whls	74	(HO Scale) Atlas: PRR Alco C-424 Diesel #8448 and PRR Alco RS-3 Diesel #8855	347	(O/027 Gauge) Railroad Books: The Trains We Rode Vol 1(Dust Jacket Severe Damage) and Vol 2; Coach Trains and Travel; Commuter Railroads; Steam Steel & Limited; The Last Of Steam; Wabash	353	(HO Scale) Red Caboose: (9) Undecorated X-29 Boxcars w/ Kadees Mtl Whls
65	(HO Scale) McKean Models: (7) Boxcars: Monon, (3) PRR, SCL, RI, NYC; SCL TOFC 2 Pack Flatcars/Athearn SCL Vans	75	(HO Scale) Athearn: (3) Covered Hoppers: PRR, United Carbon, CO-OP Fert: PRR 200 Ton Crane; PRR Derrick Car; EL Boxcar; NKP Flat/Airplane; (2) SP and L&N Bulkhead Flats (NOB); Kadees Mtl Whls	348	(O/027 Gauge) Railroad Books: The Pennsylvania Railroad 1940's - 1950's; The Diesel Builders; Otto Perry: Master Railroad Photographer; Steam Trains Of The Soo; Chesapeake And Ohio Streamliners Vol 1; Some Classic Trains	354	(HO Scale) Proto 2000: PRR Passenger Train: E8 #5797 Diesel; Walthers Budd Cars; (2) 52 Seat Coaches; (2) 10-6 Sleepers
66	(HO Scale) Broadway Limited: Paragon 3 Rolling Thunder Sound PRR J1 2-10-4 #6470 Sound/DC/DCC	76	(HO Scale) Proto 2000: Phase III B&O GP-9 Diesel #6573 And Athearn B&O C-3000 B/W Caboose	349	(O/027 Gauge) Railroad Books: The Pennsylvania Railroad 1940's - 1950's; The Diesel Builders; Otto Perry: Master Railroad Photographer; Steam Trains Of The Soo; Chesapeake And Ohio Streamliners Vol 1; Some Classic Trains	355	(HO Scale) Walthers: (6) NYC Budd Passenger Cars: RPO, Baggage, Baggage Dorm, 10-6 Sleeper, Lounge, Tavern/OBS
67	(HO Scale) McKean Models: (10) Boxcars: L&N, SBD, PRR, MP, Milw, Cen Geo, C&O, (2) Erie, B&O (VGN, RI, VR, B&O, S&A Decals) Kadees Mtl Whls	77	(HO Scale) Atlas: (6) Rolling Stock: (2) PRR, C&O and KCS Rebuilt Boxcars; (2) D&H 2 Bay Hoppers Kadees Mtl Whls	350	(O/027 Gauge) Railroad Books: The Pennsylvania Railroad 1940's - 1950's; The Diesel Builders; Otto Perry: Master Railroad Photographer; Steam Trains Of The Soo; Chesapeake And Ohio Streamliners Vol 1; Some Classic Trains	356	(HO Scale) Proto 2000: C&O E8 Diesels #4016 and #4021
68	(HO Scale) Roundhouse: Undecorated Box Cab Diesel Kit (Powered); Undec Steam Shovel Crane; Athearn Undec Rotary Snowplow	78	(HO Scale) Bowser: Executive Line Baldwin PRR AS 616 Diesel #8967 With Factory Equipped LOK Sound DCC Ready 21 Pin Plug	351	(O/027 Gauge) Railroad Books: The Pennsylvania Railroad 1940's - 1950's; The Diesel Builders; Otto Perry: Master Railroad Photographer; Steam Trains Of The Soo; Chesapeake And Ohio Streamliners Vol 1; Some Classic Trains	357	(HO Scale) Walthers: C&O Pere Marquette Proto 10-6 Sleeper; Lunch Counter/ Lounge Chessie Club; Diner
		79	(HO Scale) Proto 2000: PRR Local Freight: PRR GP9 Diesel #7221, PRR Stock Car, PRR Double Door Round	352	(O/027 Gauge) Railroad Books: The Pennsylvania Railroad 1940's - 1950's; The Diesel Builders; Otto Perry: Master Railroad Photographer; Steam Trains Of The Soo; Chesapeake And Ohio Streamliners Vol 1; Some Classic Trains	358	(HO Scale) Walthers: Heavyweights: B&O 28-1 Parlor; Soo Diner; UP 28-1 Parlor
				353	(O/027 Gauge) Railroad Books: The Pennsylvania Railroad 1940's - 1950's; The Diesel Builders; Otto Perry: Master Railroad Photographer; Steam Trains Of The Soo; Chesapeake And Ohio Streamliners Vol 1; Some Classic Trains	359	(HO Scale) Walthers: Union Pacific 8 Door 86' Hi-Cube 2 Pack; NYC 4 Door 86' Hi-Cube 2 Pack Kadees and Mtl Trks

322	(O/027 Gauge) Prewar Lionel: 068 Warning Signal; (6) 1569 Telegraph Poles, (2) Clocks, Semaphore, (2) Danger Crossing Signals		Lionel: 4 Car Set Pere Marquette Madison Style Passenger Cars: 19039 Baggage, 19040 Coach, 19041 Coach, 19042 Observation OB Mailing Carton		Roof Boxcar, D&H Covered Hopper, PRR N-5 Caboose (Decals) Kadees Mtl Whls (HO Scale) Walthers: Gold Line PRR 8 Door Hi-Cube Boxcar 2-Pack; Walthers NYC 8 Door Hi-Cube Boxcar 2-Pack	91	(HO Scale) Proto 2000: B&O E7 Diesels #66 and #78 Both w/DCC Plugs
323	(O/027 Gauge) Prewar Lionel: 092 Signal Tower (Refinished); 316 Trestle Bridge; American Flyer 586 Wayside Station OB, 760 Crossing Signal/Flagman Attached; 2020 Water Tower; Marx 416A 11 1/2" Floodlight Tower	333	(O/027 Gauge) Modern Lionel: 4 Car Set Lionel Lines Madison Style Passenger Cars: 19015 Irvington, 19016 Madison, 19017 Manhattan, 19018 Sager Place OB	80	(HO Scale) Walthers: (7) New York Central Passenger Cars; (6) Budd: Baggage, RPO, Grill-Diner, 52 Seat Coach, (2) 10-6 Sleepers, Pullman 64 Seat Coach (HO Scale) Proto 2000: NYC E8 Diesels #4040 and #4076	92	(HO Scale) Proto 2000: (9) 50 Ton War Emergency Hoppers: (7) C&O: (2) B&O; Kadees and Mtl Whls (HO Scale) Atlas: C&O Coal Train: C&O RSD-4 Diesel #5575; (8) Roundhouse C&O 3 Bay Hoppers; Walthers C&O Wood Caboose #90795 Kadees and Mtl Whls
324	(O/027 Gauge) Prewar Lionel: 184 Bungalow (Refinished); 189 Villa (Roof Repro)	334	(O/027 Gauge) Modern Lionel: 18045 #777 NYC Gray Commodore Vanderbilt Locomotive	81	(HO Scale) Walthers: (7) Reading Crusader Passenger Cars: (4) Coaches, Diner, (2) Diff OBS (HO Scale) Proto 2000: Reading F7A Diesel #270A and Reading F7B Diesel #270B Both w/Factory Installed DCC and Sound	93	(HO Scale) Atlas: C&O Coal Train: C&O RSD-4 Diesel #5575; (8) Roundhouse C&O 3 Bay Hoppers; Walthers C&O Wood Caboose #90795 Kadees and Mtl Whls (HO Scale) Proto 2000: (10) Rolling Stock: WM, ACL, (3) C&O, NKP Flatcars; (3) 50 Ton War Emerg Hoppers: (2) L&N, Wab; Union Tank Line Tanker Kadees Mtl Whls
325	(O/027 Gauge) Marx: 454 Automatic Signal; 404 3 Light Automatic Signal; 420A Circuit Breaker; Fergusson Wire Base Crossing Signal; Lionel 77N Crossing Gate (Tattered OB)	335	(O/027 Gauge) Modern Lionel: 19060 Commodore Vanderbilt Pullman Cars: 19056 Baggage, 19057 Pullman, 19058 Pullman, 19058 OB Observation OB and Mailing Carton	82	(HO Scale) Walthers: (7) Reading Crusader Passenger Cars: (4) Coaches, Diner, (2) Diff OBS (HO Scale) Proto 2000: Reading F7A Diesel #270A and Reading F7B Diesel #270B Both w/Factory Installed DCC and Sound	94	(HO Scale) Proto 2000: (10) Rolling Stock: WM, ACL, (3) C&O, NKP Flatcars; (3) 50 Ton War Emerg Hoppers: (2) L&N, Wab; Union Tank Line Tanker Kadees Mtl Whls (HO Scale) Stewart Hobbies: (2) PRR RS3 Diesel Kits (Powered) #8594 and #8605 (HO Scale) Eastern Car Works: (7) Rolling Stock Kits: (3) Undec Mill Gons With PRR and LV Decals; (2) Undecorated 70 Ton Hoppers; (2) Undec Covered Hoppers With International Minerals Decals Kadees and Mtl Whls
326	(O/027 Gauge) Modern Lionel: 12731 Station Platform OB; 12748 Ill Station Platform OB; 5121 LH Remote Control Switch; 2180 Road Signs; (2) Lefton Billboards; (2) 2283 Bumpers	336	(O/027 Gauge) Modern Lionel: 18002 Gray 785 NYC Hudson With Smoke, Sound Of Steam, Realistic Steam Whistle OB	83	(HO Scale) Walthers: (6) Budd Amtrak Phase 1 Passenger Cars: (2) Lounge, (3) 10-6 Sleepers, Grill-Diner (HO Scale) Proto 2000: Kansas City Southern GP7 II Diesel #157 w/Factory Installed DCC and Sound; Walthers KCS B/W Caboose #402 Kadees and Mtl Whls (HO Scale) Walthers : (5) PRR Passenger Cars: Baggage (Star), (2) 10-6 Sleepers Tioga and Octoraro Rapids, 4-4-2 Sleeper Imperial Trail, 10-5 Sleeper Cascade Knoll	95	(HO Scale) Stewart Hobbies: (2) PRR RS3 Diesel Kits (Powered) #8594 and #8605 (HO Scale) Eastern Car Works: (7) Rolling Stock Kits: (3) Undec Mill Gons With PRR and LV Decals; (2) Undecorated 70 Ton Hoppers; (2) Undec Covered Hoppers With International Minerals Decals Kadees and Mtl Whls
327	(O/027 Gauge) Frank Bowers Repro: (4) 189 Lionel Style Villas	337	(O/027 Gauge) Modern Lionel: 51201 4 Car Lionel Lines Rail Chief Set With Set Box and Mailing Carton	84	(HO Scale) Walthers: (6) Budd Amtrak Phase 1 Passenger Cars: (2) Lounge, (3) 10-6 Sleepers, Grill-Diner (HO Scale) Proto 2000: Kansas City Southern GP7 II Diesel #157 w/Factory Installed DCC and Sound; Walthers KCS B/W Caboose #402 Kadees and Mtl Whls (HO Scale) Walthers : (5) PRR Passenger Cars: Baggage (Star), (2) 10-6 Sleepers Tioga and Octoraro Rapids, 4-4-2 Sleeper Imperial Trail, 10-5 Sleeper Cascade Knoll	96	(HO Scale) Stewart Hobbies: (2) PRR RS3 Diesel Kits (Powered) #8594 and #8605 (HO Scale) Eastern Car Works: (7) Rolling Stock Kits: (3) Undec Mill Gons With PRR and LV Decals; (2) Undecorated 70 Ton Hoppers; (2) Undec Covered Hoppers With International Minerals Decals Kadees and Mtl Whls
328	(O/027 Gauge) Frank Bowers Repro: (5) 184 Lionel Style Bungalows; 189 Lionel Style Villa; Sherritt American Flag	338	(O/027 Gauge) Modern Lionel: 18005 NYC Hudson (700E) #5340 With Rail Sounds, Smoke, All Die-Cast Metal Construction OB; Includes Display Case and Mailing Carton	85	(HO Scale) Walthers: (6) Budd Amtrak Phase 1 Passenger Cars: (2) Lounge, (3) 10-6 Sleepers, Grill-Diner (HO Scale) Proto 2000: Kansas City Southern GP7 II Diesel #157 w/Factory Installed DCC and Sound; Walthers KCS B/W Caboose #402 Kadees and Mtl Whls (HO Scale) Walthers : (5) PRR Passenger Cars: Baggage (Star), (2) 10-6 Sleepers Tioga and Octoraro Rapids, 4-4-2 Sleeper Imperial Trail, 10-5 Sleeper Cascade Knoll	97	(HO Scale) Stewart Hobbies: Undec Baldwin VO-1000 Diesels Both w/DCC Sockets (HO Scale) Misc Kits: (4) Laser Kits Norfolk And Western CF Class Wood Cabooses; Northeastern Scale Models Riverside Insulated Tank Car; (3) Red Ball: PRR Express, PRR Well Flat, LCL Containers; Globe UTLX Tanker
329	(O/027 Gauge) MTH: 435 Lionel Power Station Terra Cotta/Cream; (3) 2 Lamp Sets 1019 #54 Maroon Lamp Posts OB	339	(O/027 Gauge) Lionel Classics: O gauge 51001 #44 Freight Special With 44E Electric, 8816 Hopper, 8814 Boxcar, 8820 Searchlight Car, 8817 Caboose in Set Box	86	(HO Scale) Walthers: (6) Budd Amtrak Phase 1 Passenger Cars: (2) Lounge, (3) 10-6 Sleepers, Grill-Diner (HO Scale) Proto 2000: Kansas City Southern GP7 II Diesel #157 w/Factory Installed DCC and Sound; Walthers KCS B/W Caboose #402 Kadees and Mtl Whls (HO Scale) Walthers : (5) PRR Passenger Cars: Baggage (Star), (2) 10-6 Sleepers Tioga and Octoraro Rapids, 4-4-2 Sleeper Imperial Trail, 10-5 Sleeper Cascade Knoll	98	(HO Scale) Stewart Hobbies: Undec Baldwin VO-1000 Diesels Both w/DCC Sockets (HO Scale) Misc Kits: (4) Laser Kits Norfolk And Western CF Class Wood Cabooses; Northeastern Scale Models Riverside Insulated Tank Car; (3) Red Ball: PRR Express, PRR Well Flat, LCL Containers; Globe UTLX Tanker
330	(O/027 Gauge) LGB: (8) 5050 Green Lamp Posts For Garden Railway 6 OB	340	(O/027 Gauge) Modern Lionel: 65166 072 LH Remote Control Switch	87	(HO Scale) Walthers: (6) Budd Amtrak Phase 1 Passenger Cars: (2) Lounge, (3) 10-6 Sleepers, Grill-Diner (HO Scale) Proto 2000: Kansas City Southern GP7 II Diesel #157 w/Factory Installed DCC and Sound; Walthers KCS B/W Caboose #402 Kadees and Mtl Whls (HO Scale) Walthers : (5) PRR Passenger Cars: Baggage (Star), (2) 10-6 Sleepers Tioga and Octoraro Rapids, 4-4-2 Sleeper Imperial Trail, 10-5 Sleeper Cascade Knoll	99	(HO Scale) Proto 2000: SPSF GP30 #2752 and BN Hi-Nose GP20 #2014 Both w/Factory Installed DCC and Sound (HO Scale) Proto 2000: (8) 52"6" Drop End Mill Gondolas; (4) NKP, (2) Erie, NYC, PM Kadees Mtl Whls
331	(O/027 Gauge) Modern Lionel: 18022 Pere Marquette Berkshire #1201 With Smoke, Liontech and Railsounds OB Mailing Carton	341	(O/027 Gauge) Rail King: MT- 1101 NYC Mohawk Locomotive #3000 w/Smoke, Whistle, Upgradeable to	88	(HO Scale) Walthers: (6) Budd Amtrak Phase 1 Passenger Cars: (2) Lounge, (3) 10-6 Sleepers, Grill-Diner (HO Scale) Proto 2000: Kansas City Southern GP7 II Diesel #157 w/Factory Installed DCC and Sound; Walthers KCS B/W Caboose #402 Kadees and Mtl Whls (HO Scale) Walthers : (5) PRR Passenger Cars: Baggage (Star), (2) 10-6 Sleepers Tioga and Octoraro Rapids, 4-4-2 Sleeper Imperial Trail, 10-5 Sleeper Cascade Knoll	100	(HO Scale) Proto 2000: (8) 52"6" Drop End Mill Gondolas; (4) NKP, (2) Erie, NYC, PM Kadees Mtl Whls
332	(O/027 Gauge) Modern			89	(HO Scale) Proto 2000: PRR E8 Diesel #5713A: Cal-Scale Nose Lift Rings and Antenna Support System (HO Scale) Proto 2000: (8) 52"6" Drop End Mill Gons: NKP, EL, PM, (2) DT&I, Erie, NYC, CR		

101	(HO Scale) Grandt Line: HOn3 GE 25 Ton End Cab Industrial Diesel; GE 23 Ton Box Cab Electric Loco, Both w/Power Units; HOn3 GE Box Cab Diesel Non-Powered; HO GE Box Cab Diesel Non- Powered	111	Peacock Gondola; 517 Green/Red Caboose (Dent in Roof)	301	and Tender, 3 Car Two Tone Red Passenger Cars: 2600 Pullman, 2601 Observation, 2602 Baggage (O/027 Gauge) RichArtReproduction: Orange New York Central Lines (2) 710 Pullmans, 712 New York Central Observation (O/027 Gauge) RichArtReproduction: Two- Tone Blue Passenger Set: (2) 710 Pullmans, 712 Observation (O/027 Gauge) Prewar Lionel : 263E/2263W Gunmetal Loco and Tender (Refinished) (O/027 Gauge) Ives: 1661E/1661T Loco and Tender, (2) 1690 Coaches, 1691 Observation (Roofs Repainted) (O/027 Gauge) Ives: Red/ Black 61 Chair Car, 72 Drawing Room, 73 Observation (O/027 Gauge) Ives: Green 3253 0-4-0 Electric, 66 Standard Oil Tanker, 641506 IC Boxcar, 65 NY &HR Cattle Car, 69 Flatcar/Lumber, 63 NYC Gondola, 67 Caboose (O/027 Gauge) Ives: Orange Passenger Set: 3255R Motor (Repaint), 129 Saratoga Coach, 130 Buffet, 132 Observation (O/027 Gauge) Marx: 597 Commodore Vanderbilt Loco/ Tender, 90171 B&LE Boxcar, 554 NP Coal Car, 552 RI Gondola, 553 Midstates Oil, PRR Boxcar, 550 NYC Wrecker (No Hook), 556 NYC Caboose (O/027 Gauge) Marx Trains: 3003 Canadian Pacific 2-4-2 Loco and Tender OB (O/027 Gauge) Marx Trains: 205 St Paul and Pacific Old Time Boxcar, 44 St Paul and Pacific Old Time Caboose	311	OB (O/027 Gauge) Marx Miami Fla: 5192 Canadian Pacific Old Time Passenger Cars in Set Box: 146 Victoria, 148 Banff, 150 Regina, 152 Saskatoon (O/027 Gauge) Prewar Lionel: 47 Automatic Crossing Gate (Box Remnant) Paint Wear on Crossing); 314 Plate Girder Bridge (Box Remnant); (2) 93 Water Towers (O/027 Gauge) Prewar Lionel: 98 Coal House (Paint Chips on Base); 1045 Flagman; 48W Whistle Station (O/027 Gauge) Prewar Lionel: 165 Remote Control Crane/Controller (O/027 Gauge) Postwar Lionel: (3) 154 Crossing Signals/154C Connectors; (3) 153 Automatic Block Signals (O/027 Gauge) Postwar Lionel: (2) 151 Semaphores (1 OB); 153 Automatic Block Signal (Base Painted Black); 156 Station Platform (1 Sign Missing) OB; (2) 167 Whistle Controllers; (1 OB Flaps Missing) (O/027 Gauge) Postwar Lionel: 313 Bascule Bridge (No Controller or Alignment Frame); (2) Prewar 025 Bumpers; UCS Uncoupling Section; 270 Prewar Bridge (O/027 Gauge)Prewar Lionel:126 Station (O/027 Gauge) Prewar Lionel: 126 Lioneltown Station in Crackle Red and Pea Green, (Rust on Base) (O/027 Gauge) Prewar Lionel: 436 Power Station; Ives 200 Freight Station (Refinished) (O/027 Gauge) Prewar Lionel: (6) 060 Telegraph Posts; 068 Warning Signal (Poor Repaint)
102	(HO Scale) Fox Valley Models: (3) B&O Wagon Top Boxcars; Tangent Scale Models PRR and Wabash Gondolas	112	(Standard Gauge) Lionel Std Gauge: Red 8E Passenger Set: 0-4-0 8E Electric; 337 Pullman; 338 Observation (Loco Rewheeled)	302	(Standard Gauge) Lionel Std Gauge: Blue/Silver 3 Car Passenger Set: 309 Pullman; 310 Railway Mail; 312 Observation (Refinished)	312	(Standard Gauge) Lionel Std Gauge: Restored Dark Green Passenger Set: 38 0-4-0 Elec; 32 RPO; 35 Pullman; 36 Observation
103	(HO Scale) Broadway Limited: Paragon 3 Rolling Thunder PRR I1 sa 2-10-0 #4499 w/ Long Tender and Paragon 3 Sound/DC/DCC	113	(Standard Gauge) Lionel Std Gauge: Restored Dark Green Passenger Set: 38 0-4-0 Elec; 32 RPO; 35 Pullman; 36 Observation	303	(Standard Gauge) Lionel Std Gauge: 385E/385W Gunmetal 2-4-2 Locomotive and Tender (Partially Restored)	313	(Standard Gauge) Lionel Std Gauge: Refinished Terra Cotta/Maroon Passenger Set: 1766 Pullman; 1767 Baggage/Mail; 1768 Observation
104	(HO Scale) Red Caboose: (10) Rolling Stock: (5) PRR M/ W Boxcars; (2) PRR Boxcars, CG and NH Boxcars, Swifts Reefer Kadees and Mtl Whls	114	(Standard Gauge) Lionel Std Gauge: Refinished Terra Cotta/Maroon Passenger Set: 1766 Pullman; 1767 Baggage/Mail; 1768 Observation	304	(Standard Gauge) Lionel Std Gauge: Mojave Passenger Set: 0-4-4-0 402 Electric (Paint Rubs); 418 Parlor Car; 419 Baggage/Parlor Roof Paint Rubbed Off); 490 Observation	314	(Standard Gauge) Lionel Std Gauge: (2) 513 Cattle Cars; Orange/Green Roof; Green/ Orange Roof (Spot On Roof) 2 Box Remnants
105	(HO Scale) Walthers: (12) Rolling Stock: (3) Gons: (2) L&N, C&O; (3) Covered Hoppers: (2) DRGW, Undec PRR Decals; GN Flat; NYC, Undec B&M Decals; Undec Deep Well Flat NOB; Erie and Penn Central Insulated Boxcars Kadees and Mtl Whls	114A	(Standard Gauge) Lionel Std Gauge: 514 Cream/Orange Boxcar; 511 Flatcar/Lumber Load 1 Box Remnant	305	(Standard Gauge) Lionel Std Gauge: 516 Red Hopper Car (Repro Load); 517 Pea Green/Red Caboose 1 Box Remnant	315	(Standard Gauge) Lionel Std Gauge: 516 Red Hopper Car (Standard Gauge) Lionel Std Gauge: 515 Terra Cotta Tank
106	(HO Scale) Walthers: (4) 4 Door 86' Hi-Cube Boxcars; (3) C&O; SF Ford Auto Parts Kadees and Mtl Whls	115	(Standard Gauge) Lionel Std Gauge: 516 Red Hopper Car (Standard Gauge) Lionel Std Gauge: 515 Terra Cotta Tank	306	(Standard Gauge) Lionel Std Gauge: 516 Red Hopper Car (Standard Gauge) Lionel Std Gauge: 515 Terra Cotta Tank	316	(Standard Gauge) Lionel Std Gauge: 516 Red Hopper Car (Standard Gauge) Lionel Std Gauge: 515 Terra Cotta Tank
<b>Lots 107-202 Standard Gauge</b>							
107	(Standard Gauge) Lionel Std Gauge: 0-4-4-0 NYC 42 Black Electric Repaint	117	(Standard Gauge) Lionel Std Gauge: 514 Cream/Orange Boxcar; 511 Flatcar/Lumber Load 1 Box Remnant	307	(Standard Gauge) Lionel Std Gauge: 516 Red Hopper Car (Repro Load); 517 Pea Green/Red Caboose 1 Box Remnant	317	(Standard Gauge) Lionel Std Gauge: 516 Red Hopper Car (Standard Gauge) Lionel Std Gauge: 515 Terra Cotta Tank
108	(Standard Gauge) Lionel Std Gauge: 116 Ballast Car; 11 PRR Flatcar With Lumber Load Repaint; 14 CM&ST P Boxcar; 17 NYC&HRR Caboose Refinished	118	(Standard Gauge) Lionel Std Gauge: 516 Red Hopper Car (Standard Gauge) Lionel Std Gauge: 515 Terra Cotta Tank	308	(Standard Gauge) Lionel Std Gauge: 516 Red Hopper Car (Standard Gauge) Lionel Std Gauge: 515 Terra Cotta Tank	318	(Standard Gauge) Lionel Std Gauge: 516 Red Hopper Car (Standard Gauge) Lionel Std Gauge: 515 Terra Cotta Tank
109	(Standard Gauge) Lionel Std Gauge: 38 0-4-0 NYC Maroon Electric Restored	119	(Standard Gauge) Lionel Std Gauge: 516 Red Hopper Car (Standard Gauge) Lionel Std Gauge: 515 Terra Cotta Tank	309	(Standard Gauge) Lionel Std Gauge: 516 Red Hopper Car (Standard Gauge) Lionel Std Gauge: 515 Terra Cotta Tank	319	(Standard Gauge) Lionel Std Gauge: 516 Red Hopper Car (Standard Gauge) Lionel Std Gauge: 515 Terra Cotta Tank
110	(Standard Gauge) Lionel Std Gauge: 515 Ivory Tanker; 514 Cream/Orange Boxcar; 512	120	(Standard Gauge) Lionel Std Gauge: 516 Red Hopper Car (Standard Gauge) Lionel Std Gauge: 515 Terra Cotta Tank	310	(Standard Gauge) Lionel Std Gauge: 516 Red Hopper Car (Standard Gauge) Lionel Std Gauge: 515 Terra Cotta Tank	320	(Standard Gauge) Lionel Std Gauge: 516 Red Hopper Car (Standard Gauge) Lionel Std Gauge: 515 Terra Cotta Tank



277	(O/027 Gauge) Prewar Lionel: 259 Loco and Tender		Looks Restored), 782 Coach, 783 Coach, 784 Observation	121	Car; 512 Gondola (Standard Gauge) Lionel Std Gauge: 511 Green Flatcar/ Lumber Load; 517 Pea Green/Red Caboose	133	(Standard Gauge) Ives STD Gauge: Green 196 Flatcar; Brown 193 Cattle Car; 195 Caboose (All Cars Have Scratched and Chipped Paint)
278	(O/027 Gauge) Prewar Lionel: 814 Boxcar (Number Plate Needs Attached), 3859 Dump Car, 813 Cattle Car, 817 Caboose	289	(O/027 Gauge) Prewar Lionel: Commodore Vanderbilt Set: 265-E/265WX Loco and Tender, 617 Coach, 618 Observation, 619 Combine Set Is Restored	122	(Standard Gauge) Lionel Std Gauge: 216 Green Hopper; 215 Green Tank Car (Corrosion and Paint Loss)	134	(Standard Gauge) Ives STD Gauge: Brown 3235 0-4-0 Electric (Restored)
279	(O/027 Gauge) Prewar Lionel: 816 Hopper (No Hopper Doors) Repaint, 814R Reefer, 811 Flatcar/Lumber	290	(O/027 Gauge) Prewar Lionel: Red Comet Passenger Set; 264E/261T Loco and Tender; (2) 603 Pullmans, 604 Observation	123	(Standard Gauge) Lionel Std Gauge: 218 Mojave Dump Car (Copper Journals) OB	135	(Standard Gauge) Lionel Std Gauge: Green/Orange Trim Passenger Set: 309 Pullman (Roof Dent); 310 Railway Mail; 312 Observation
280	(O/027 Gauge) Prewar Lionel: Gray/Chrome Flying Yankee Set: 619 Power Car (Top Of Cab Is Crazying), (2) 617 Coaches, 618 Tail Car (Repaint)	291	(O/027 Gauge) Prewar Lionel: 2956 B&O Semi-scale Hopper OB (OB has Repairs)	124	(Standard Gauge) Lionel Std Gauge: 112 Rock Island Gondola; 114 Orange Boxcar (Repaint); 113 Cattle Car (Repaint)	136	(Standard Gauge) Lionel Std Gauge: Dark Gray 318 0-4-0 Electric
281	(O/027 Gauge) Prewar Lionel: 229 Loco and Tender, 204 Loco and Tender, 655 Boxcar, 654 Sunoco Tanker, IVES 1679 Boxcar	292	(O/027 Gauge) Prewar Lionel: 2955 Shell Semi-scale Tanker Restored OB	125	(Standard Gauge) Lionel Std Gauge: 12 Rock Island Gondola; 16 PRR Ballast Car; 13 Green Cattle Car	137	(Standard Gauge) Lionel Std Gauge: Green 8 0-4-0 Electric (Restored)
282	(O/027 Gauge) Prewar Lionel: 251E 0-4-0 Electric (Refinished), 3 Car Set Gray/ Maroon Trim Passenger Cars: (2) 605 Pullmans, 606 Observation	293	(O/027 Gauge) Prewar Lionel: 2954 PRR Semi-scale Boxcar OB (Flaps Missing)	126	(Standard Gauge) Lionel Std Gauge: 10E Two Tone Brown Passenger Set: 10E 0-4-0 Electric Green Frame; 332 Railway Mail; 339 Pullman; 341 Observation	138	(Standard Gauge) Lionel Std Gauge: 10E 0-4-0 Passenger Set in Peacock: 10E (Rewheeled); 332 Railway Mail; 339 Pullman (Paint off 1 Truck); 341 Observation
283	(O/027 Gauge) Prewar Lionel: 1688/1689T Loco and Tender, 1668E/1689T Gunmetal Loco and Tender, 809 Dump Car, NYC Lines Hopper (Repaint)	294	(O/027 Gauge) Prewar Lionel: 2957 NYC Semi-scale Caboose w/Brakeman On Rear Platform OB (Repairs, Tears, Flaps Missing)	127	(Standard Gauge) Lionel Std Gauge: Maroon/Cream 309 Pullman; 312 Observation (Roofs Are Brown Repaints)	139	(Standard Gauge) Lionel Std Gauge: 520 Searchlight Car (Standard Gauge) Lionel Std Gauge: 514 Dark Pearl/ Peacock Refrigerator Car (Restored)
284	(O/027 Gauge) Prewar Lionel: Yellow/Brown Union Pacific M10000 Streamliner: 752W Power Car, (2) 753 Coaches, 754 Tail Car Set Is Restored	295	(O/027 Gauge) Prewar Lionel: 226E/2226W Loco and Tender	128	(Standard Gauge) Lionel Std Gauge: 384-E Locomotive and Tender (Rewheeled and Repaint)	140	(Standard Gauge) Lionel Std Gauge: 390-E/390T 2-4-2 Locomotive and Tender (Rewheeled)
285	(O/027 Gauge) Prewar Lionel: 260E/260T Loco and Tender	296	(O/027 Gauge) Prewar Lionel: 227 (8976) PRR B6 Switcher w/2227B Tender (1 Red Marker Missing on Loco)	129	(Standard Gauge) Ives STD Gauge: 3235 Green Passenger Set: 0-4-0 Electric; 184 Buffet Car; 186 Observation	142	(Standard Gauge) Lionel Std Gauge: 214 Cream/Orange Furniture Double Door Boxcar (Paint Chips); 211 Black Flatcar/Lumber Load
286	(O/027 Gauge) Prewar Lionel: 810 Crane, 812 Gondola (Repaint)	297	(O/027 Gauge) Prewar Lionel: 1684/2689T Loco and Tender, 651 Flatcar (Truck Needs Reattached) Repaint, Orange Tanker Repaint, 2672 PRR Caboose	130	(Standard Gauge) Ives STD Gauge: Restored 186 Light Green Observation Car	143	(Standard Gauge) Lionel Std Gauge: Brown 380 0-4-0 Electric (Restored and Scratch on Roof)
287	(O/027 Gauge) Prewar Lionel: 820 Searchlight (Repaint), 817 Caboose (Repaint)	298	(O/027 Gauge) Prewar Lionel: (2) 3659 Dump Car/ Bins, 3651 Log Dump/Bin, 2677 Gondola, 2652 Gondola/3 Barrels, 2657 Caboose, 206 1/2 Bag Coal	131	(Standard Gauge) Ives STD Gauge: Green 3243R 4-4-4 Electric (Repaint); Orange 187-3 Buffet; 188-3 Parlor Car (2 Doors Missing); 189-3 Observation (Rail Section Missing)	144	(Standard Gauge) Lionel Std Gauge: 220 Black/Terra Cotta Searchlight Car; 212 Maroon Gondola
288	(O/027 Gauge) Prewar Lionel: Milwaukee Road Hiawatha Set: 250E/250W Loco and Tender (Tender	299	(O/027 Gauge) Prewar Lionel: 2758 PRR Automobile Boxcar, 2680 Sunoco Tanker, 2757 PRR Caboose	132	(Standard Gauge) Ives STD Gauge: Green 3241 0-4-0 Electric With 171-3 Buffet and 173-3 Observation	145	(Standard Gauge) Lionel Std Gauge: 318E Green 0-4-0 Electric (Paint Worn on Roof and Rewheeled)
		300	(O/027 Gauge) Prewar Lionel: 238/265W PRR Loco				

146	(Standard Gauge) Lionel Std Gauge: 213 Mojave/Maroon Cattle Car; 217 Orange/Maroon Caboose (Repaint)		Block Signal (Amber and Green Lens Missing); 438 Signal Tower (Paint Missing/Chips)	253	(O/027 Gauge) Prewar Lionel: 1689E/1689T (Loco is Gunmetal, Tender is Black w/Whistle), 659 Dump Car, 652 Gon/3 Barrels, 655 Boxcar, 657 Caboose	265	Lumber, 657 Caboose (O/027 Gauge) Prewar Lionel: Yellow/Brown Union Pacific City Of Denver Set: 636W Power Car (No Whistle), (2) 637Coaches, 638 Observation (Restored)
147	(Standard Gauge) Lionel Std Gauge: Dark Green 380E Passenger Set: 380E 0-4-0 (Rewheeled); 428 Parlor Car; 429 Parlor/Baggage; 430 Observation	157	(Standard Gauge) Lionel Std Gauge: White and Mojave 76 Block Signals (1 Has a Mojave Lense); (2) White 79 Flashing Highway Signals (1 Has Paint Chipping and No Flashing Mechanism)	254	(O/027 Gauge) Prewar Lionel: 248 0-4-0 Electric (Very Small Dent in Top), 529 Pullman, 530 Observation	266	(O/027 Gauge) Prewar Lionel: 3 Car Set Red/Silver Passenger Cars: (2) 610 Pullmans, 612 Observation OB (Flaps Missing)
148	(Standard Gauge) Lionel Std Gauge: Two Tone Green Passenger Set: 9E 2-4-2 Electric; 309 Pullman; 310 Railway Mail; 312 Observation	158	(Standard Gauge) Lionel Std Gauge: 57 Orange Lamp Post (Broadway and Main) Tattered OB; 83 Traffic and Crossing Signal (Metal Base Damage)	255	(O/027 Gauge) Prewar Lionel: 1689E/1689W Loco/Tender in Gunmetal, 654 Sunoco Tanker, 653 Hopper, 657 Caboose	267	(O/027 Gauge) Prewar Lionel: 249E/265W Gunmetal Loco/Tender
149	(Standard Gauge) Lionel Std Gauge: 318E Baby State Passenger Set: Brown 318E 0-4-0 (Rewheeled); Two Tone Brown 309 Pullman; 310 Railway Mail; 312 Observation	159	(Standard Gauge) Lionel Std Gauge: 91 Circuit Breaker; 69 Warning Bell; 25 Illuminated Bumper (Restored With Paint Chips)	256	(O/027 Gauge) Prewar Lionel: 3 Car Set Blue/Silver Passenger Cars: (2) 2640 Pullmans, 2641 OBS	268	(O/027 Gauge) Prewar Lionel: 225E/2235W Loco/Tender
150	(Standard Gauge) Lionel Std Gauge: Two-Tone Blue Passenger Cars; 309 Pullman; 310 Railway Mail; 312 Observation (Restored)	160	(Standard Gauge) Lionel Std Gauge: 87 Railroad Crossing Signal (Metal Crazing Throughout); 78 Train Control Block Signal	257	(O/027 Gauge) Prewar Lionel: 224E/2224W Loco/Tender	269	(O/027 Gauge) Prewar Lionel: 2653 Hopper (Shoe Missing), 2654 Shell Tanker, 2657 Caboose
151	(Standard Gauge) Lionel Std Gauge: 1835E 2-4-2 Locomotive and Tender (Tender Has Copper Journals) Restored	161	(Standard Gauge) Lionel Std Gauge: (2) 58 Peacock Lamp Posts With Box Remnants (1 Loose Lamp)	258	(O/027 Gauge) Prewar Lionel: 2652 Gondola/Barrels, 2656 Cattle Car, 2659 Dump Car, 2657 Caboose	270	(O/027 Gauge) Prewar Lionel: 2656 Cattle Car, 2655 Boxcar, 3659 Dump Car (Shoe Missing)
152	(Standard Gauge) Lionel Std Gauge: 10 Electric 0-4-0 With (2) 337 Pullmans; 338 Observation All In Mojave (Restored Frame and Rewheeled)	162	(Standard Gauge) Lionel Std Gauge: (5) Peacock/Maroon 60 Telegraph Poles With Some Paint chips on Bases; 59 Olive Green Lamp Post	259	(O/027 Gauge) Prewar Lionel: 815 Sunoco Tanker, 813 Cattle Car, 817 Caboose	271	(O/027 Gauge) Prewar Lionel: 253 0-4-0 Electric (Restored), 804 Tanker, 807 Caboose
153	(Standard Gauge) Lionel Std Gauge: Restored 29 Day Coach With Passengers Added	163	(Standard Gauge) Lionel Std Gauge: (2) 80N Semaphores (1 Has Parts Missing, the Other Has Screws Missing From Back); 82 Train Control Semaphore (Base Painted Purple, Mechanism Missing w/Tattered Box; 66 Semaphore	260	(O/027 Gauge) Prewar Lionel: 3 Car Set Gray/Red Passenger Cars: 600 Pullman, 601 OBS, 602 Baggage OB (Flaps Missing)	272	(O/027 Gauge) Prewar Lionel: 261/262T Loco and Tender
154	(Standard Gauge) Lionel Std Gauge: 117 NYC&HRRR Brown/Black Caboose; Pride Lines Electric Rapid Transit No 1	164	(Standard Gauge) Lionel Std Gauge: 101 Bridge With Approaches; 280 Bridge	261	(O/027 Gauge) Prewar Lionel: 225/2235W Loco and Tender	273	(O/027 Gauge) Prewar Lionel: 262/262T Loco and Tender, 1719 Boxcar, 1717 Gon/Bag of Coal, 1722 Caboose
155	(Standard Gauge) Lionel Std Gauge: 219 Wrecking Crane In Peacock/Dark Green (1 Gear has Teeth Stripped)	165	(Standard Gauge) Lionel Std Gauge: (2) 80N Semaphores (1 Has Parts Missing, the Other Has Screws Missing From Back); 82 Train Control Semaphore (Base Painted Purple, Mechanism Missing w/Tattered Box; 66 Semaphore	262	(O/027 Gauge) Prewar Lionel: 1666/2666T Loco and Tender (1 Pilot Step Broken Off), 2620 Searchlight, 3651 Lumber/Logs/Tray, 2660 Crane, 2657 Caboose	274	(O/027 Gauge) Prewar Lionel: 3 Car Restored Terra Cotta/Maroon/Cream Passenger Set: (2) 613 Pullmans, 614 Observation (Roof Scratch)
156	(Standard Gauge) Lionel Std Gauge: 99 Blk/Cream/Red	166	(Standard Gauge) Lionel Std Gauge: 101 Bridge With Approaches; 280 Bridge	263	(O/027 Gauge) Prewar Lionel: Chrome/Red Lionel Junior Set: 1700E Loco, 1701 Coach, 1702 Observation	275	(O/027 Gauge) Prewar Lionel: 1681E/1661T Lionel Junior Loco/Tender, (2) 1690 Coaches, 1691 Observation 2 box Remnants
		167	(Standard Gauge) Lionel Std Gauge: 119 Tunnel; 120L Tunnel	264	(O/027 Gauge) Prewar Lionel: 259E With Whistle Tender, 656 Cattle Car, 654 Sunoco Tanker (Part of. Label Missing), 651 Flat/	276	(O/027 Gauge) Prewar Lionel: Baby Blue Comet Set; 263/2263W Loco and Tender, 613 Pullman, 614 Observation, 615 Baggage
			(Standard Gauge) Lionel Std Gauge: 119 Tunnel; 120L Tunnel				

232	(HO Scale) Bowser: PRR Aerotrain: Diesel and 4 Undec Cars (Unpowered)		Quantum System QSI Sound With DC/DCC Mode		Gauge: 124 Lionel City Station; (3) 23 Bumpers; (5) Logs; (7) Barrels; Bag Coal		Classics STD G: 13800 1115 Passenger Station OB
233	(HO Scale) Walthers: (3) Gold Line B&O Conversion Express Cars From C&O Style Troop Sleepers	244	(HO Scale) Funaro Camerlengo: (6) Kits: VGN Gon, CN Reefer, Cabot's Hopper, (2) NH or BAR Boxcars; Erie or B&M Milk Car: All w/Decals, Mtl Whls, Kadees	168	(Standard Gauge) Lionel Std Gauge: 155 Freight Station; 14 Figures	182	(Standard Gauge) Lionel Classics STD G: 13001 1-318 Freight Express Train: 318 Loco, 5130 Flatcar/Lumber, 5140 Refrigerator Car, 5150 Tanker, 5160 Caboose In Set Box
234	(HO Scale) Walthers: (4) Heavyweights: C&O Diner and (3) C&O 70' Baggage	245	(HO Scale) Proto 2000: B&O GP-7 Diesel #743 w/Steam Generator; B&O GP-9 Diesel #6598 w/Dynamic Brakes	169	(Standard Gauge) Lionel Std Gauge: 300 Hell Gate Bridge Green/Cream/Terra Cotta/ Brass Trim	183	(Standard Gauge) Lionel Classics STD G: 13103 1-400 -E Blue Comet Locomotive And Tender OB
235	(HO Scale) Genesis: C&O FP7 #8002 and F7B #8501 Passenger Diesels Both With Tsunami Sound (Incomplete Box Interiors)	246	(HO Scale) Proto 2000: (5) NYC Mill Gons; Kar-Line MSTL Boxcar; Intermountain Georgia RR Boxcar; (2) Atlas Rdg Stone Hoppers; Mtl Whls Kadees	170	(Standard Gauge) Ives STD Gauge: 115 Railroad Freight Station; 114 Railroad Passenger Station	184	(Standard Gauge) Lionel Classics STD G: (3) Blue Comet Passenger Cars; 13409 (1420) Faye; 13410 (1421) Westphal; 13411 (1422) Tempel OB
236	(HO Scale) Funaro Camerlengo: (3) 50' B&O Baggage Car Kits/Decals	247	(HO Scale) Proto 2000: PRR Diesels SD45 #6174 w/DCC Socket and RS27 #2405 w/ DCC Plug	171	(Standard Gauge) Ives STD Gauge: 113 Passenger Station		(Standard Gauge) Lionel Classics STD G: 13104 The "Old No. 7" Steam Locomotive Polished Brass Loco and Tender OB
237	(HO Scale) Proto 2000: Southern Pacific Passenger Train: SP E7 #6000 With DCC Plug; SP E7B Unpowered B Unit; Sunset Limited Baggage, (2) Passenger Cars; SP Corrugated Side Coach (1 Partial Box)	248	(HO Scale) Athearn: (12) Rolling Stock: PFE, CN, UTRX, NP Reefers; (2) Erie, EL, (2) SOO, B&O Hoppers; UP Flat; IC Bulkhead Flat; Kadees Mtl Whls	172	(Standard Gauge) Ives O Gauge: 201 Passenger Station OB; Hornby No. 1 Goods Platform OB	185	(Standard Gauge) Lionel Classics STD G: 13104 The "Old No. 7" Steam Locomotive Polished Brass Loco and Tender OB
238	(HO Scale) Stewart: (12) Hoppers: (10) Reading 2 Bay, (2) WM 2 Bay; Proto 2000 Reading Caboose #92835	249	(HO Scale) Stewart: (14) N&W 2-Bay Hoppers; Atlas N&W Caboose #557728; Kadees Mtl Whls	173	(Standard Gauge) Ives O Gauge: 201 Passenger Station OB; Hornby No. 1 Goods Platform OB	185	(Standard Gauge) Lionel Classics STD G: 13104 The "Old No. 7" Steam Locomotive Polished Brass Loco and Tender OB
239	(HO Scale) Stewart: NYC Coal Train: F3 Diesel; (7) 3 Bay Hoppers: (2) NOB: Kadees Metal Whls	250	(HO Scale) Atlas: Master Gold Series N&W C420 Diesel #414 With Quantum System w/QSI Sound and DC/DCC Mode	174	(Standard Gauge) Ives O Gauge: 201 Passenger Station OB; Hornby No. 1 Goods Platform OB	185	(Standard Gauge) Lionel Classics STD G: 13104 The "Old No. 7" Steam Locomotive Polished Brass Loco and Tender OB
240	(HO Scale) Funaro Camerlengo: (4) Boxcar Kits; Gondola Kit, Covered Hopper Kit Kadees Mtl Whls NOB			175	(Standard Gauge) Ives O Gauge: 201 Passenger Station OB; Hornby No. 1 Goods Platform OB	185	(Standard Gauge) Lionel Classics STD G: 13104 The "Old No. 7" Steam Locomotive Polished Brass Loco and Tender OB
241	(HO Scale) Broadway Limited: Paragon 2 PRR I1sa 2-10-0 Decapod #4591 With Long Tender; w/Sound and Dual Mode DC/DCC; Walthers PRR N6b Caboose #981793			176	(Standard Gauge) Ives O Gauge: 201 Passenger Station OB; Hornby No. 1 Goods Platform OB	185	(Standard Gauge) Lionel Classics STD G: 13104 The "Old No. 7" Steam Locomotive Polished Brass Loco and Tender OB
242	(HO Scale) Bowser: (5) 4-Bay PRR Hoppers; (3) Alcoa \$-Bay Hoppers; Kadees Mtl Whls			177	(Standard Gauge) Ives O Gauge: 201 Passenger Station OB; Hornby No. 1 Goods Platform OB	185	(Standard Gauge) Lionel Classics STD G: 13104 The "Old No. 7" Steam Locomotive Polished Brass Loco and Tender OB
243	(HO Scale) Atlas: Master Gold Series Georgia Railroad GP-40-2 Diesel #755 w/			178	(Standard Gauge) Ives O Gauge: 201 Passenger Station OB; Hornby No. 1 Goods Platform OB	185	(Standard Gauge) Lionel Classics STD G: 13104 The "Old No. 7" Steam Locomotive Polished Brass Loco and Tender OB
			<b>Lots 251-348</b>	179	(Standard Gauge) Ives O Gauge: 201 Passenger Station OB; Hornby No. 1 Goods Platform OB	185	(Standard Gauge) Lionel Classics STD G: 13104 The "Old No. 7" Steam Locomotive Polished Brass Loco and Tender OB
			<b><u>PreWar Lionel O/027 Gauge</u></b>	180	(Standard Gauge) Ives O Gauge: 201 Passenger Station OB; Hornby No. 1 Goods Platform OB	185	(Standard Gauge) Lionel Classics STD G: 13104 The "Old No. 7" Steam Locomotive Polished Brass Loco and Tender OB
			<b><u>Tinplate unless noted</u></b>	181	(Standard Gauge) Ives O Gauge: 201 Passenger Station OB; Hornby No. 1 Goods Platform OB	185	(Standard Gauge) Lionel Classics STD G: 13104 The "Old No. 7" Steam Locomotive Polished Brass Loco and Tender OB
		251	(O/027 Gauge) Prewar Lionel: 258/257T Loco/ Tender (Some Restoration), 831 Flat/Lumber, 805 Boxcar, 806 Cattle Car, 807 Caboose	179	(Standard Gauge) Ives O Gauge: 201 Passenger Station OB; Hornby No. 1 Goods Platform OB	185	(Standard Gauge) Lionel Classics STD G: 13104 The "Old No. 7" Steam Locomotive Polished Brass Loco and Tender OB
		252	(O/027 Gauge) Prewar Lionel: 1664 Loco and Tender (1 Marker Jewel Missing), 1679 Baby Ruth Boxcar, 2677 Gondola, 1682 Caboose	180	(Standard Gauge) Ives O Gauge: 201 Passenger Station OB; Hornby No. 1 Goods Platform OB	185	(Standard Gauge) Lionel Classics STD G: 13104 The "Old No. 7" Steam Locomotive Polished Brass Loco and Tender OB
				181	(Standard Gauge) Ives O Gauge: 201 Passenger Station OB; Hornby No. 1 Goods Platform OB	185	(Standard Gauge) Lionel Classics STD G: 13104 The "Old No. 7" Steam Locomotive Polished Brass Loco and Tender OB
				182	(Standard Gauge) Ives O Gauge: 201 Passenger Station OB; Hornby No. 1 Goods Platform OB	185	(Standard Gauge) Lionel Classics STD G: 13104 The "Old No. 7" Steam Locomotive Polished Brass Loco and Tender OB
				183	(Standard Gauge) Ives O Gauge: 201 Passenger Station OB; Hornby No. 1 Goods Platform OB	185	(Standard Gauge) Lionel Classics STD G: 13104 The "Old No. 7" Steam Locomotive Polished Brass Loco and Tender OB
				184	(Standard Gauge) Ives O Gauge: 201 Passenger Station OB; Hornby No. 1 Goods Platform OB	185	(Standard Gauge) Lionel Classics STD G: 13104 The "Old No. 7" Steam Locomotive Polished Brass Loco and Tender OB
				185	(Standard Gauge) Ives O Gauge: 201 Passenger Station OB; Hornby No. 1 Goods Platform OB	185	(Standard Gauge) Lionel Classics STD G: 13104 The "Old No. 7" Steam Locomotive Polished Brass Loco and Tender OB
				186	(Standard Gauge) Ives O Gauge: 201 Passenger Station OB; Hornby No. 1 Goods Platform OB	185	(Standard Gauge) Lionel Classics STD G: 13104 The "Old No. 7" Steam Locomotive Polished Brass Loco and Tender OB
				187	(Standard Gauge) Ives O Gauge: 201 Passenger Station OB; Hornby No. 1 Goods Platform OB	185	(Standard Gauge) Lionel Classics STD G: 13104 The "Old No. 7" Steam Locomotive Polished Brass Loco and Tender OB
				188	(Standard Gauge) Ives O Gauge: 201 Passenger Station OB; Hornby No. 1 Goods Platform OB	185	(Standard Gauge) Lionel Classics STD G: 13104 The "Old No. 7" Steam Locomotive Polished Brass Loco and Tender OB
				189	(Standard Gauge) Ives O Gauge: 201 Passenger Station OB; Hornby No. 1 Goods Platform OB	185	(Standard Gauge) Lionel Classics STD G: 13104 The "Old No. 7" Steam Locomotive Polished Brass Loco and Tender OB
				190	(Standard Gauge) Ives O Gauge: 201 Passenger Station OB; Hornby No. 1 Goods Platform OB	185	(Standard Gauge) Lionel Classics STD G: 13104 The "Old No. 7" Steam Locomotive Polished Brass Loco and Tender OB
				191	(Standard Gauge) Ives O Gauge: 201 Passenger Station OB; Hornby No. 1 Goods Platform OB	185	(Standard Gauge) Lionel Classics STD G: 13104 The "Old No. 7" Steam Locomotive Polished Brass Loco and Tender OB

		<b>Lots 203-250</b>			
192	(Standard Gauge) Ron Morris: (2) 914 Plots		<b><u>HO Scale &amp; All Items Boxed</u></b>	211	(HO Scale) Bowser: PRR Baldwin VO-1000 Diesel #5914 w/Factory Equipped LoK Sound and 8 Pin Plug For DCC
193	(Standard Gauge) Ron Morris: 928 Plot With 127 Lioneltown Station		<b><u>Unless Noted, Many are New</u></b>	212	(HO Scale) Roundhouse: (5) Gorre & Daphetid Rolling Stock: Cattle Car, Coach, Boxcar, Ventilated Boxcar, Ore Jenny (Trucks/Couplers Missing)
194	(Standard Gauge) Large Custom Plot: Home Made Plot With (2) 189 Lionel Villas; (2) 191 Lionel Villa Mansions (1 With Repro Roof); (4) 184 Lionel Bungalows; Lionel 442 Diner; (6) 37172 Black Lionel Lamp Posts ; 56 Lionel Lamp Post; 14 Trees (1 Trunk Broken)	203	(HO Scale) E&B Valley Railroad: (10) Rolling Stock: (2) Conrail, (2) SP Mill Gons; (2) NKP and (2) Clinchfield Covered Hoppers; (2) Undec Cov Hoppers; Kadees and Whls	222	(HO Scale) Genesis: PRR GP-9 Diesel #7109 w/ Tsunami Sound
195	(Standard Gauge) MTH Tinplate Trad: Lionel Black Brass 392 Loco/Tender OB and Mailing Carton	204	(HO Scale) Proto 2000: NYC S-1 Diesel Switcher #687 (Can Be Converted to DCC); B&O SW1200 Diesel Switcher #599	223	(HO Scale) Walthers: (8) Rolling Stock: PRR X-29 Boxcar, Celotex, (2) UTLX, BASF Tank Cars; Weyerhaeuser 50', (2) DT&I 60' Boxcars
196	(Standard Gauge) MTH Tinplate Trad: Lionel Stephen Girard Passenger Set: 424 Liberty Bell; 425 Stephen Girard; 426 Coral Isle OB & Mailing Carton	205	(HO Scale) Red Caboose: (10) Rolling Stock: Wilson, Armour, (2) Swift, Oscar Mayer, Sioux City, Libby's Reefers: Ambrose Wine Tanker; Bear Creek and Chateau Martin Wine Cars; Kadees and Mtl Whls	224	(HO Scale) Overland Models: Brass 19000 Series NYC Caboose #19189
197	(Standard Gauge) MTH Tinplate Trad: 10-205 214R Reefer Ivory/Peacock; 10-1101 500 Red Hopper OB	206	(HO Scale) Atlas: N&W Coal Train: C-425 Diesel #1003; (6) Bowser 2-Bay Hoppers; Bachmann Caboose #500832; Kadees and Mtl Whls	225	(HO Scale) Proto 2000: SPSF GP30 Diesel #2752: BN Hi-Hood GP20 Diesel #2014 Both w/Factory Installed Sound and DCC
198	(Standard Gauge) MTH Tinplate Trad: (2) 10-1048 99N Train Control Block Signals OB	207	(HO Scale) Con-Cor: (10) Rolling Stock: (3) PRR, Bond, Firestone Airslide Covered Hoppers; (2) BN, PFE, N&W Reefers, PRR 3 Bay Covered Hopper; Kadees and Mtl Whls NOB's	226	(HO Scale) Cannonball Car Shop: (7) Rolling Stock: Buffalo Creek, Monon, (2) LV , Undec (Erie Decals) Boxcars; UP and Undec Express Cars (Rutland Decals); Buffalo Creek Decal ; Kadees Mtl Whls
199	(Standard Gauge) MTH Tinplate Trad: 10-1046 79 Flashing Highway Signal; 92 Floodlight Tower OB	208	(HO Scale) Broadway Limited: N&W Paragon 3 Rolling Thunder 2-6-6-4 Loco /Tender #1238 w/Paragon Sound/DC/DCC Equipped	227	(HO Scale) Cannonball Car Shop: (7) Rolling Stock: Buffalo Creek, Monon, (2) LV , Undec (Erie Decals) Boxcars; UP and Undec Express Cars (Rutland Decals); Buffalo Creek Decal ; Kadees Mtl Whls
200	(Standard Gauge) MTH Tinplate Trad: Merchandise Containers: Station Accessories Set	209	(HO Scale) Athearn: (16) 2 Bay Hoppers: (6) NYC, MP, (3) B&LE, (2) DL&W, CNJ, SOO, P&S, Undec; Kadees And Mtl Whls	228	(HO Scale) Genesis: Penn Central GP9B Diesel w/ Tsunami Sound (Cabless Booster)
201	(Standard Gauge) MTH Tinplate Trad: 10-4001 and 10-4002 Pair Of STD Ga Remote Control Switches OB	210	(HO Scale) Bowser: (10) Rolling Stock: (9) PRR H-21 3 Bay Hoppers, PRR N5c Caboose #477943; Kadees, Mtl Whls	229	(HO Scale) Silver Sides: (8) Kits: PRR Coach, (2) 60' PRR Baggage, 70" PRR Baggage; Walthers 80' Diner and 75' Modern Coach; (2) Alco NYC Day Coaches; (2) (HO Scale) Atlas:Trainman NYC RS-32 Diesel #8036; NYC Caboose #17560
202	(Standard Gauge) MTH Tinplate Trad: 1043 Set of 3 94 High Tension Towers OB			230	(HO Scale) Rivarossi: (6) Passenger Cars: Undec Baggage; Undec 12-5 Sleeper; (3) Undec Roomette; Undec OBS
				231	(HO Scale) Atlas: Undec GP-7 and Undec RS-3 Diesels