

ONLINE-ONLY: Pocket Watch Auction 3/3/2021-4/21/2021

LOT #

**1 ELGIN POCKET WATCH - STERLING - 19J - 8/0s**

ELGIN POCKET WATCH - STERLING - 19j - 8/0s; Circa Year = n/a; Grade = 752; Size = 8/0s; Jewels = 19j; Mvmt Config = Openface; Mvmt Set = Pendant; Adj = n/a; Serial# n/a; Additional Notes = Sets, but does not wind or run. We could not obtain serial number. Elgin Sterling Silver Case. Star on the dial.



Quantity: 1

**2 GALLET PENDANT WATCH - STERLING - 17J - 8/0s**

GALLET PENDANT WATCH - STERLING - 17j - 8/0s; Circa Year = n/a; Grade = JXR; Size = 8/0s; Jewels = 17j; Mvmt Config = Openface; Mvmt Set = Pendant; Adj = N; Serial# n/a; Additional Notes = Movement markings "Gallet & Co, Unadjusted, JXR, Swiss Made, 17 Jewels, Seventeen". Dial marked "RACINE".



Runs. Gallet & Co Sterling Silver case. We were unable to "set" the time.

Quantity: 1

**3 ELGIN POCKET WATCH - 1894 - 11J - 0s**

ELGIN POCKET WATCH - 1894 - 11j - 0s; Circa Year = 1894; Grade = 113; Size = 0s; Jewels = 11j; Mvmt Config = Hunting; Mvmt Set = Pendant; Adj = N; Serial# 5397122; Additional Notes = Full ornate hunters case with small engraved initials on one side. 3/4 plate with gilt finish. Quick train. Plain regulator. Going barrel. Clean dial.



Quantity: 1

LOT #

**4 ELGIN POCKET WATCH - 1898 - 15J - 0s**

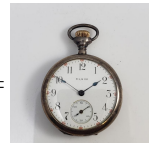
ELGIN POCKET WATCH - 1898 - 15j - 0s; Circa Year = 1898; Grade = 130; Size = 0s; Jewels = 15j; Mvmt Config = Hunting; Mvmt Set = Pendant; Adj = N; Serial# 7372957; Additional Notes = Hairline crack running from 12 to 6 on the single-sunk dial. Gold filled case. 3/4 plate. Nice ornate full case.



Quantity: 1

**5 ELGIN POCKET WATCH - STERLING - 1909 - 7J - 0s**

ELGIN POCKET WATCH - STERLING - 1909 - 7j - 0s; Circa Year = 1909; Grade = 324; Size = 0s; Jewels = 7j; Mvmt Config = Openface; Mvmt Set = Pendant; Adj = N; Serial# 13792558; Additional Notes = Sterling Silver Case. Winds and runs for a short time before stopping. Needs cleaned/oiled to be considered running condition. Small initials engraved on rear cover. Single sunk dial.



Quantity: 1

**6 ILLINOIS POCKET WATCH - STERLING - 1915 - 17J - 0s**

ILLINOIS POCKET WATCH - STERLING - 1915 - 17j - 0s; Circa Year = 1915; Grade = 204; Size = 0s; Jewels = 17j; Mvmt Config = Openface; Mvmt Set = Pendant; Adj = N; Serial# 2750576; Additional Notes = Sterling Silver Case. Several hairline cracks on the dial. Large initials engraved on the rear silver case.



Quantity: 1

ONLINE-ONLY: Pocket Watch Auction 3/3/2021-4/21/2021

**LOT #****7 NEW ENGLAND POCKET WATCH - 0s**

NEW ENGLAND POCKET WATCH - 1898-14 - 0s; Circa Year = 1898-14; Grade = Senator; Size = 0s; Jewels = n/a; Mvmt Config = Openface; Mvmt Set = Pendant; Adj = N; Serial# n/a; Additional Notes = Winds and runs for a short time before stopping. Needs cleaned/oiled to be considered running condition.



Quantity: 1

**8 ELGIN POCKET WATCH - 1888 - 7J - 6s**

ELGIN POCKET WATCH - 1888 - 7j - 6s; Circa Year = 1888; Grade = 95; Size = 6s; Jewels = 7j; Mvmt Config = Hunting; Mvmt Set = Lever; Adj = N; Serial# 2941429; Additional Notes = Full case with initials L.M. on one side. Single sunk dial with hairline cracks on the dial. 3/4 plate with gilt finish.



Quantity: 1

**9 ELGIN POCKET WATCH - 1897 - 16J - 6s**

ELGIN POCKET WATCH - 1897 - 16j - 6s; Circa Year = 1897; Grade = 168; Size = 6s; Jewels = 16j; Mvmt Config = Hunting; Mvmt Set = Pendant; Adj = Y; Serial# 6798481; Additional Notes = Adjusted. 3/4 plate with nickel finish and gilt inlay colors. Moseley regulator. Breguet hairspring. Single sunk dial. Crystal is loose in the case, but will not fall out.



Quantity: 1

**10 ELGIN POCKET WATCH - 1902 - 7J - 6s**

ELGIN POCKET WATCH - 1902 - 7j - 6s; Circa Year = 1902; Grade = 206; Size = 6s; Jewels = 7j; Mvmt Config = Hunting; Mvmt Set = Pendant; Adj = N; Serial# 9409167; Additional Notes = Ornate hunters 20yr case. Database calls it a 7j watch; Owners notes called a 15j.



Quantity: 1

**LOT #****11 ELGIN POCKET WATCH - 1904 - 7J - 6s**

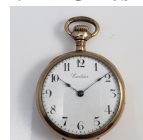
ELGIN POCKET WATCH - 1904 - 7j - 6s; Circa Year = 1904; Grade = 286; Size = 6s; Jewels = 7j; Mvmt Config = Hunting; Mvmt Set = Pendant; Adj = N; Serial# 10863451; Additional Notes = Full ornate 14K gold filled case. Dust cover engraved "Clara Kreke". 3/4 plate with nickel pattern finish. Single sunk dial. Breguet hairspring. Expansion balance type.



Quantity: 1

**12 EXCELSIOR POCKET WATCH - 1882? - 11J - 0s**

EXCELSIOR POCKET WATCH - 1882? - 11j - 0s; Circa Year = 1882?; Grade = n/a; Size = 0s; Jewels = 11j; Mvmt Config = Openface; Mvmt Set = Pendant; Adj = n/a; Serial# 20304; Additional Notes = 3/4 plate with nickel finish. "Excelsior" markings on the dial, the case and the movement. "W" engraved on the back cover and a few small dents. Two small holes at bottom of case to attach a pendant or fob.



Quantity: 1

**13 TRIBUNE POCKET WATCH - PARTS ONLY - 17J - 6s**

TRIBUNE POCKET WATCH - PARTS ONLY - 17J - 6s; Circa Year = n/a; Grade = n/a; Size = 6s; Jewels = 17J; Mvmt Config = Hunting; Mvmt Set = Pendant; Adj = N; Serial# CG007298; Additional Notes = Tribune Watch has no crystal or hands. Does not wind. Does not run. Does not set. Selling as parts only.



Quantity: 1

**14 WALTHAM POCKET WATCH - 1891 - 7J - 6s**

WALTHAM POCKET WATCH - 1891 - 7j - 6s; Circa Year = 1891; Grade = J; Size = 6s; Jewels = 7j; Mvmt Config = Hunting; Mvmt Set = Pendant; Adj = N; Serial# 4837444; Additional Notes = Cashier case. Dust cover engraved "Jennie Parker". 3/4 plate with gilt finish.



Quantity: 1

ONLINE-ONLY: Pocket Watch Auction 3/3/2021-4/21/2021

**LOT #****15 BUREN POCKET WATCH - 1912 - 21J - 12s**

BUREN POCKET WATCH - 1912 - 21j - 12s; Circa Year = 1912; Grade = Capitol; Size = 12s; Jewels = 21j; Mvmt Config = Openface; Mvmt Set = Pendant; Adj = Y; Serial# 2067791; Additional Notes =



"Swiss" marking on the dial along with "Capitol" and "21 Jewels". Has a jewel on the stem too. Outer track on the dial has individual minutes numbered 1 to 60, similar to a Montgomery dial. The Mead Special marking inside case. Engraved "Louise to Albert" inside cover.

Non-Magnetic marking on the 3-Finger movement with nickel finish. 2

Adjustments. Notes from the previous owner indicated year 1912.

Quantity: 1

**16 ELGIN POCKET WATCH - 1905 - 15J - 12s**

ELGIN POCKET WATCH - 1905 - 15j - 12s; Circa Year = 1905; Grade = 302; Size = 12s; Jewels = 15j; Mvmt Config = Hunting; Mvmt Set = Pendant; Adj = N; Serial# 11485382; Additional Notes = Fancy dial Elgin watch. It appears the end of the hour hand is missing. 3/4 plate nickel finish movement. Includes chain approximately 10" in length.



Quantity: 1

**17 ELGIN POCKET WATCH - 1924 - 15J - 12s**

ELGIN POCKET WATCH - 1924 - 15j - 12s; Circa Year = 1924; Grade = 315; Size = 12s; Jewels = 15j; Mvmt Config = Openface; Mvmt Set = Pendant; Adj = N; Serial# 26677242; Additional Notes = Double roller. 3/4 plate with nickel finish. Clean dial. Moseley regulator. Breguet hairspring. Ruby Balance Jewel.



Quantity: 1

**LOT #****18 ELGIN POCKET WATCH - 1927 - 17J - 12s**

ELGIN POCKET WATCH - 1927 - 17j - 12s; Circa Year = 1927; Grade = 345; Size = 12s; Jewels = 17j; Mvmt Config = Openface; Mvmt Set = Pendant; Adj = N; Serial# 29852576; Additional Notes = 14K gold filled case. 3/4 plate with nickel finish. Double roller. Moseley regulator. Breguet hairspring. Ruby Balance Jewel. Silver toned metal dial shows some wear.



Quantity: 1

**19 ILLINOIS POCKET WATCH - 1920 - 17J - 12s**

ILLINOIS POCKET WATCH - 1920 - 17j - 12s; Circa Year = 1920; Grade = The Autocrat; Size = 12s; Jewels = 17j; Mvmt Config = Openface; Mvmt Set = Pendant; Adj = Y; Serial# 3682279; Additional Notes = The Autocrat, Grade 405. Initials engraved on rear case cover. Year "1921" engraved inside case. Single sunk dial is heavily damaged near the 11. Double Roller. Adjusted 3 Positions and Temperature. Bridge plate with nickel finish and gilt inlay colors.



Quantity: 1

**20 ILLINOIS POCKET WATCH - 1930 - 17J - 12s**

ILLINOIS POCKET WATCH - 1930 - 17j - 12s; Circa Year = 1930; Grade = 127; Size = 12s; Jewels = 17j; Mvmt Config = Openface; Mvmt Set = Pendant; Adj = Y; Serial# 5370795; Additional Notes = 6-sided 14K gold filled case with HFM initials on rear cover. Inside cover engraved "12-25-33 with names". Very nice two-toned dial. Double roller. Adjusted to Temperature. Bridge plate.



Quantity: 1

ONLINE-ONLY: Pocket Watch Auction 3/3/2021-4/21/2021

**LOT #****21 ROCKFORD POCKET WATCH - 1912 - 15J - 12s**

ROCKFORD POCKET WATCH - 1912 - 15j - 12s; Circa Year = 1912; Grade = 365; Size = 12s; Jewels = 15j; Mvmt Config = Openface; Mvmt Set = Pendant; Adj = n/a; Serial# 893394; Additional Notes = 3-Finger bridge plate with a wavy pattern nickel finish. Reed regulator. Total production 5,000. Rear case engraved initials "EH". Minor scratches on the crystal.



Quantity: 1

**22 WALTHAM POCKET WATCH - 1919 - 15J - 12s**

WALTHAM POCKET WATCH - 1919 - 15j - 12s; Circa Year = 1919; Grade = 220; Size = 12s; Jewels = 15j; Mvmt Config = Openface; Mvmt Set = Pendant; Adj = N; Serial# 22897413; Additional Notes = Nickel case has 3 pin size dents on the rear cover. 3/4 plate with nickel finish. Crack on the dial runs from the 1 to the center to the sunken dial.



Quantity: 1

**23 WALTHAM POCKET WATCH - 1912 - 7J - 14s**

WALTHAM POCKET WATCH - 1912 - 7j - 14s; Circa Year = 1912; Grade = Export; Size = 14s; Jewels = 7j; Mvmt Config = Openface; Mvmt Set = Pendant; Adj = N; Serial# 18755545; Additional Notes = Does NOT wind. Ran for a short time, but stopped. Consider does NOT run because we are unable to wind it. Unable to set the pendant movement. Includes chain, but the clasp is incomplete. Large initials engraved on the rear case. Romona 20 yr Double Stock gold filled case. "Ensign" marking on the movement.



Quantity: 1

**LOT #****24 DRUSUS POCKET WATCH - 16s**

DRUSUS POCKET WATCH - 16s; Circa Year = n/a; Grade = n/a; Size = 16s; Jewels = n/a; Mvmt Config = Hunting; Mvmt Set = Pendant; Adj = n/a; Serial# n/a; Additional Notes = German watchmaker. Inside dust cover "Garantie 10 Jahre" translates to Guaranteed 10 years.



Movement has gilt finish.

Quantity: 1

**25 ELGIN POCKET WATCH - 1889 - 7J - 16s**

ELGIN POCKET WATCH - 1889 - 7j - 16s; Circa Year = 1889; Grade = 114; Size = 16s; Jewels = 7j; Mvmt Config = Hunting; Mvmt Set = Lever; Adj = N; Serial# 3335854; Additional Notes = Single sunk dial. 3/4 plate, gilt finish. "H.J." initials on outer case. Faint cracks on the dial. Hallmark on inside case is similar to a Maltese Cross. Unsure of hallmark meaning. The outer case has a soft gold feel to it (see photos), but we will list it as gold-filled because of our uncertainty. If you need better photos on this watch, give us a call.



Quantity: 1

**26 ELGIN POCKET WATCH - 1901 - 15J - 16s**

ELGIN POCKET WATCH - 1901 - 15j - 16s; Circa Year = 1901; Grade = 258; Size = 16s; Jewels = 15j; Mvmt Config = Openface; Mvmt Set = Pendant; Adj = N; Serial# 9282670; Additional Notes = 3/4 plate with nickel finish. Private label "C.D. Peacock" on the face.



Quantity: 1

**27 ELGIN POCKET WATCH - 1921 - 15J - 16s**

ELGIN POCKET WATCH - 1921 - 15j - 16s; Circa Year = 1921; Grade = 313; Size = 16s; Jewels = 15j; Mvmt Config = Openface; Mvmt Set = Pendant; Adj = N; Serial# 23853621; Additional Notes = Does NOT run. Does NOT wind. Diesel Locomotive engraved on the rear case cover. Moseley regulator. Breguet



ONLINE-ONLY: Pocket Watch Auction 3/3/2021-4/21/2021

**LOT #**

hairspring. Plastic crystal is amber tinted.  
Quantity: 1

**28 ELGIN POCKET WATCH - 1925 - 7J - 16s**

ELGIN POCKET WATCH - 1925 - 7j - 16s; Circa Year = 1925; Grade = 291; Size = 16s; Jewels = 7j; Mvmt Config = Openface; Mvmt Set = Pendant; Adj = N; Serial# 27416051; Additional Notes = Double sunk dial in good condition. Case needs a good polish, but overall in good shape. Crystal is messy around the seal.  
Quantity: 1

**29 HAMILTON POCKET WATCH - 1921 - 21J - 16s**

HAMILTON POCKET WATCH - 1921 - 21j - 16s; Circa Year = 1921; Grade = 992; Size = 16s; Jewels = 21j; Mvmt Config = Openface; Mvmt Set = Lever; Adj = Y; Serial# 1583624; Additional Notes = Railroad Grade. Adjusted to 5 Positions, Temperature and Isochronism. Montgomery dial. Double Roller. Breguet hairspring. Reed regulator. Gold center wheel material. 3/4 plate has a bar pattern nickel finish and gilt inlay colors. Double sunk dial has hairline crack from center to the 2 and also very faint damage around the 4 & 5.  
Quantity: 1

**30 HAMPDEN POCKET WATCH - 1902 - 15J - 16s**

HAMPDEN POCKET WATCH - 1902 - 15j - 16s; Circa Year = 1902; Grade = 109 D (in split flag); Size = 16s; Jewels = 15j; Mvmt Config = Openface; Mvmt Set = Lever; Adj = N; Serial# 1764897; Additional Notes = Amber tinted plastic acrylic crystal. Small dent on back case cover.  
Quantity: 1

**LOT #****31 ILLINOIS POCKET WATCH - 1899 - 17J - 16s**

ILLINOIS POCKET WATCH - 1899 - 17j - 16s; Circa Year = 1899; Grade = 187; Size = 16s; Jewels = 17j; Mvmt Config = Hunting; Mvmt Set = Lever; Adj = Y; Serial# 1478967; Additional Notes = Railroad Grade. Private label "Adams Street Extra" on the dial. Adjusted 5 positions and temperature. 3-finger plate with nickel finish. "17 Ruby Jewels" marking on the movement. Minute hand is broken near the end.  
Quantity: 1

**32 ILLINOIS POCKET WATCH - 1907 - 17J - 16s**

ILLINOIS POCKET WATCH - 1907 - 17j - 16s; Circa Year = 1907; Grade = 174; Size = 16s; Jewels = 17j; Mvmt Config = Hunting; Mvmt Set = Lever; Adj = N; Serial# 2010586; Additional Notes = Gold toned metal dial in excellent condition. 3/4 plate with nickel wavy pattern finish. Getty Model?  
Quantity: 1

**33 ILLINOIS POCKET WATCH - 1910 - 17J - 16s**

ILLINOIS POCKET WATCH - 1910 - 17j - 16s; Circa Year = 1910; Grade = 304; Size = 16s; Jewels = 17j; Mvmt Config = Openface; Mvmt Set = Pendant; Adj = N; Serial# 2233968; Additional Notes = Bridge plate with nickel finish. Double Roller. Double sunk dial with damage between 3 & 4. Visible crack between 7 & 8. Keystone Base Metal Case.  
Quantity: 1

**34 ILLINOIS POCKET WATCH - 1911 - 15J - 16s**

ILLINOIS POCKET WATCH - 1911 - 15j - 16s; Circa Year = 1911; Grade = 303; Size = 16s; Jewels = 15j; Mvmt Config = Hunting; Mvmt Set = Pendant; Adj = N; Serial# 2319211; Additional Notes = Private label "Chas. Kranich, Philadelphia" on the movement and the dial. There are a few hairline cracks on the double-sunk dial and some damage around the seconds dial.



**ONLINE-ONLY: Pocket Watch Auction 3/3/2021-4/21/2021****LOT #**

Bridge plate with nickel finish movement.  
Reed regulator. Double Roller.  
Quantity: 1

**35 ILLINOIS POCKET WATCH - 1916 - 17J - 16s**

ILLINOIS POCKET WATCH - 1916 - 17j - 16s; Circa Year = 1916; Grade = 304; Size = 16s; Jewels = 17j; Mvmt Config = Hunting; Mvmt Set = Pendant; Adj = N; Serial# 3027564; Additional Notes = Overextended hinge on the cover case and will need repair/replacement soon. Double sunk dial. Oxidation visible in many places on the case. Double Roller. Bridge plate with striped-pattern nickel finish.  
Quantity: 1

**36 ILLINOIS POCKET WATCH - 1923 - 17J - 16s**

ILLINOIS POCKET WATCH - 1923 - 17j - 16s; Circa Year = 1923; Grade = 305 - Capitol; Size = 16s; Jewels = 17j; Mvmt Config = Openface; Mvmt Set = Pendant; Adj = Y; Serial# 4424771; Additional Notes = "Capitol" marking on the bridge plate with nickel finish. Double Roller. Adjusted to Temperature. Double sunk dial has minor hairline cracks near the 12 and 4. Small dent on back case cover.  
Quantity: 1

**37 J.G. GRAVES SHEFFIELD POCKET WATCH - STERLING**

J.G. GRAVES SHEFFIELD POCKET WATCH - STERLING - 1900 - 16s; Circa Year = 1900; Grade = J.G. Graves; Size = 16s; Jewels = n/a; Mvmt Config = Openface; Mvmt Set = Key; Adj = n/a; Serial# 8800; Additional Notes = "The Express English Lever, J.G. Graves, Sheffield" markings on the dial. Swing out movement has dust proof 2nd case. Silver hallmarks decorate the dust cover and the inside case. Measures approx. 1.75" across the diameter (we listed it with other 16s). Crystal has a bevel in the center. Crystal and dial in good condition. No key, but runs. We don't sell enough English watches to be able to confidently provide you more information. Watch w/movement = 4.48 oz or 127 grams.

**LOT #**

Quantity: 1

**38 ROCKFORD POCKET WATCH - 1902 - 17J - 16s**

ROCKFORD POCKET WATCH - 1902 - 17j - 16s; Circa Year = 1902; Grade = 561; Size = 16s; Jewels = 17j; Mvmt Config = Hunting; Mvmt Set = Pendant; Adj = Y; Serial# 604097; Additional Notes = Very clean watch. Gold colored hands. Double sunk dial. Adjusted to Temperature. Rear case engraved initials "CM". Total production 5,000.  
Quantity: 1

**39 SOUTH BEND POCKET WATCH - 1913 - 17J - 16s**

SOUTH BEND POCKET WATCH - 1913 - 17j - 16s; Circa Year = 1913; Grade = 215; Size = 16s; Jewels = 17j; Mvmt Config = Openface; Mvmt Set = Pendant; Adj = Y; Serial# 764352; Additional Notes = Adjusted to Temperature and Isochronism. Swing out movement, 3/4 plate with nickel finish. Double Roller. Micrometric Regulator. Total Production 20,000. "215" marking on the movement. Hairline crack on the double-sunk dial near the 4. Some minor damage near the 12 & 1 on the dial. Minute hand slightly bent.  
Quantity: 1

**40 UNKNOWN SWISS POCKET WATCH - 16s**

UNKNOWN SWISS POCKET WATCH - 16s; Circa Year = n/a; Grade = n/a; Size = 16s; Jewels = n/a; Mvmt Config = Openface; Mvmt Set = Pin; Adj = n/a; Serial# n/a; Additional Notes = Beautiful porcelain dial with inner 24-hour markings, outer Seconds ticks and gold dots between the hour numerals. Coin Silver case. Inside case marked "Depose Argentan". Dust cover markings: "Horlogerie Soignee Qualite Superieure" translates to Careful Watchmaking Superior Quality. "Reglage Parfait" = Perfect Adjustment. "Repassee en second" = Ironed Second. We did not attempt to remove plate to view movement or find more information. Ornate back cover. Owner notes = came to US from WWI veteran.



## ONLINE-ONLY: Pocket Watch Auction 3/3/2021-4/21/2021

**LOT #**

Quantity: 1

**41 CALVERT POCKET WATCH - 17J - 18s**

CALVERT POCKET WATCH - 17j - 18s;  
 Circa Year = n/a; Grade = n/a; Size = 18s;  
 Jewels = 17j; Mvmt Config = Openface;  
 Mvmt Set = Pendant; Adj = N; Serial# n/a;  
 Additional Notes = "Swiss" and "AOH"  
 markings on the movement. Could not  
 locate SN. Jeweled pallets. Rear case cover  
 worn. "Switzerland" marking on the dial.  
 Quantity: 1

**42 ELGIN POCKET WATCH - 1887 - 11J - 18s**

ELGIN POCKET WATCH - 1887 - 11j -  
 18s; Circa Year = 1887; Grade = 88; Size  
 = 18s; Jewels = 11j; Mvmt Config =  
 Hunting; Mvmt Set = Lever; Adj = N;  
 Serial# 2151962; Additional Notes = Inner  
 dust cover is a clear acrylic crystal with  
 clear viewing of the half nickel movement.  
 Train: Quick. Barrel: Going. Regulator:  
 Plain. 44,000 Total Production. Rear case  
 cover is heavily worn. Raised crystal has  
 minor scratches.  
 Quantity: 1

**43 ELGIN POCKET WATCH - 1891 - 7J - 18s**

ELGIN POCKET WATCH - 1891 - 7j -  
 18s; Circa Year = 1891; Grade = 73; Size  
 = 18s; Jewels = 7j; Mvmt Config =  
 Openface; Mvmt Set = Pendant; Adj = N;  
 Serial# 4274810; Additional Notes =  
 Single sunk dial has hairline crack from 10  
 to 12...otherwise very clean dial. Full plate  
 with gilt finish. Case in good condition.  
 Quantity: 1

**44 ELGIN POCKET WATCH - 1894 - 15J - 18s**

ELGIN POCKET WATCH - 1894 - 15j -  
 18s; Circa Year = 1894; Grade = 82; Size  
 = 18s; Jewels = 15j; Mvmt Config =  
 Hunting; Mvmt Set = Lever; Adj = N;  
 Serial# 5011499; Additional Notes =  
 Original case paper accompanies the gold  
 filled case with matching serial numbers.  
 Dust cover engraved "J.T. Camerer, 1892"  
 on the 1894 movement. Does not wind.

**LOT #**

Does not run. Some wear on the outer case.

Quantity: 1

**45 ELGIN POCKET WATCH - 1896 - 17J - 18s**

ELGIN POCKET WATCH - 1896 - 17j -  
 18s; Circa Year = 1896; Grade = 147; Size  
 = 18s; Jewels = 17j; Mvmt Config =  
 Openface; Mvmt Set = Pendant; Adj = Y;  
 Serial# 6101648; Additional Notes = Does  
 NOT wind. Does NOT set. Swing out  
 movement. Runs for a short time, then  
 stops. Consider does NOT run unless it is  
 serviced.



Quantity: 1

**46 HAMILTON POCKET WATCH - 1911 - 17J - 18s**

HAMILTON POCKET WATCH - 1911 -  
 17j - 18s; Circa Year = 1911; Grade = 924;  
 Size = 18s; Jewels = 17j; Mvmt Config =  
 Openface; Mvmt Set = Lever; Adj = N;  
 Serial# 698683; Additional Notes =  
 Salesman case with visible movement.  
 Billie Boggs Special marking on the dial.  
 Visible cracks on the dial originate out  
 from the lever.



Quantity: 1

**47 ILLINOIS POCKET WATCH - 1894 - 17J - 18s**

ILLINOIS POCKET WATCH - 1894 - 17j  
 - 18s; Circa Year = 1894; Grade = Bunn;  
 Size = 18s; Jewels = 17j; Mvmt Config =  
 Hunting; Mvmt Set = Lever; Adj = Y;  
 Serial# 1248830; Additional Notes =  
 Railroad Grade. Adjusted. Chalmers  
 regulator. Safety Pinion. Full plate nickel  
 finish with gold engraved markings on the  
 movement. Very nice Hunters gold filled  
 case.



Quantity: 1

ONLINE-ONLY: Pocket Watch Auction 3/3/2021-4/21/2021

**LOT #****48 ILLINOIS POCKET WATCH - 1901 - 15J - 18s**

ILLINOIS POCKET WATCH - 1901 - 15j  
- 18s; Circa Year = 1901; Grade = 59; Size  
= 18s; Jewels = 15j; Mvmt Config =  
Hunting; Mvmt Set = Lever; Adj = N;  
Serial# 1581923; Additional Notes =  
Private label "Lockwood & Son, Chariton,  
Iowa" markings on the dial and movement.  
Coin Silver Case.  
Quantity: 1

**49 ILLINOIS POCKET WATCH - 1907 - 21J - 18s**

ILLINOIS POCKET WATCH - 1907 - 21j  
- 18s; Circa Year = 1907; Grade = Bunn  
Special; Size = 18s; Jewels = 21j; Mvmt  
Config = Openface; Mvmt Set = Lever; Adj  
= Y; Serial# 1921484; Additional Notes =  
Railroad Grade. Adjusted to 6 Positions,  
Isochronism and Temperature. Reed  
Regulator. Train Fast. Full plate with  
nickel finish. Double Roller. Old English  
font on the movement. 21 Ruby Jewels.  
Quantity: 1

**50 ILLINOIS POCKET WATCH - 1911 - 21J - 18s**

ILLINOIS POCKET WATCH - 1911 - 21j  
- 18s; Circa Year = 1911; Grade = Bunn  
Special; Size = 18s; Jewels = 21j; Mvmt  
Config = Openface; Mvmt Set = Lever; Adj  
= Y; Serial# 2392406; Additional Notes =  
Railroad Grade. Adjusted to 6 Positions,  
Isochronism and Temperature. Reed  
Regulator. Train Fast. Full plate with  
nickel finish. Double Roller. Old English  
font on the movement. 21 Ruby Jewels.  
Double sunk dial in very good condition.  
Ornate case with one very small dent on  
the rear cover. Needs a good shine.  
Quantity: 1

**LOT #****51 JOHN FORREST POCKET WATCH - STERLING - 18s**

JOHN FORREST POCKET WATCH -  
STERLING - 18s; Circa Year = n/a; Grade  
= n/a; Size = 18s; Jewels = n/a; Mvmt  
Config = Either; Mvmt Set = Key; Adj =  
n/a; Serial# 702616; Additional Notes =  
"John Forrest, London" and "Chronometer  
Maker To The Admiralty" markings on the  
dial and the movement. Dial in good  
condition. Very clean full plate in gilt  
finish. Has a dust cover with a clasp which  
also has the serial # marking. Runs good.  
Swing out movement. Ornate case has  
two-tone metal on the rear cover. Key  
set/wind. Key not included. Fusee  
movement? Sterling hallmarks on the stem  
as well as the case. Watch w/movement =  
5.3 oz or 150 grams.  
Quantity: 1

**52 NEW YORK STD POCKET WATCH - 1902 - 7J - 18s**

NEW YORK STD POCKET WATCH -  
1902 - 7j - 18s; Circa Year = 1902; Grade  
= 61; Size = 18s; Jewels = 7j; Mvmt Config  
= Openface; Mvmt Set = Lever; Adj = N;  
Serial# 1408751; Additional Notes = Case  
shows heavy wear and/or oxidation. 3/4  
plate with nickel finish. Damaged crystal.  
Quantity: 1

**53 ROCKFORD POCKET WATCH - STERLING - 15J - 18s**

ROCKFORD POCKET WATCH -  
STERLING - 1883 - 15j - 18s; Circa Year  
= 1883; Grade = n/a; Size = 18s; Jewels =  
15j; Mvmt Config = Openface; Mvmt Set =  
Lever; Adj = n/a; Serial# 164316;  
Additional Notes = American Waltham  
STERLING Silver Case with marking  
K398. Full plate movement with nickel  
finish. Very clean crystal and face with  
large sunken seconds dial. Watch  
w/movement = 6.6 oz or 188 grams.  
Quantity: 1





ONLINE-ONLY: Pocket Watch Auction 3/3/2021-4/21/2021

**LOT #****54 UNKNOWN FUSSE POCKET WATCH - PARTS ONLY**

UNKNOWN FUSSE POCKET WATCH - PARTS ONLY - n/a; Circa Year = n/a; Grade = n/a; Size = n/a; Jewels = n/a; Mvmt Config = Openface; Mvmt Set = n/a; Adj = n/a; Serial# n/a; Additional Notes = Porcelain dial with damage throughout. Does NOT run. Case appears to be silver ("LG" hallmark). Swing out movement. No key.



Quantity: 1

**LOT #****58 WALTHAM POCKET WATCH - 1904 - 15J - 18s**

WALTHAM POCKET WATCH - 1904 - 15j - 18s; Circa Year = 1904; Grade = 820; Size = 18s; Jewels = 15j; Mvmt Config = Hunting; Mvmt Set = Lever; Adj = N; Serial# 13876137; Additional Notes = Does NOT wind. Does NOT run. Full plate, nickel finish movement. Slight overextension on cover case hinge. JBoss 14K gold filled case.



Quantity: 1

**55 WALTHAM POCKET WATCH - 1877 - 7J - 18s**

WALTHAM POCKET WATCH - 1877 - 7j - 18s; Circa Year = 1877; Grade = Broadway; Size = 18s; Jewels = 7j; Mvmt Config = Adaptable; Mvmt Set = Key; Adj = N; Serial# 1706756; Additional Notes = Does not wind. Does not run. Full plate, gilt finish. We will include the temporary case with two-sided viewing.



Quantity: 1

**59 WALTHAM POCKET WATCH - 1904 - 17J - 18s**

WALTHAM POCKET WATCH - 1904 - 17j - 18s; Circa Year = 1904; Grade = 85; Size = 18s; Jewels = 17j; Mvmt Config = Openface; Mvmt Set = Pendant; Adj = Y; Serial# 14177109; Additional Notes = Full plate with gilt finish. Double Roller. Double sunk dial. Breguet hairspring. Hairline cracks on dial between 7 & 9. Rear case cover has small dent and needs a good shine.



Quantity: 1

**56 WALTHAM POCKET WATCH - 1883 - 11J - 18s**

WALTHAM POCKET WATCH - 1883 - 11j - 18s; Circa Year = 1883; Grade = 3; Size = 18s; Jewels = 11j; Mvmt Config = Hunting; Mvmt Set = Lever; Adj = N; Serial# 4814651; Additional Notes = Winds but does NOT run. Swing out movement. Dial has various cracks. Stem wind, lever set.



Quantity: 1

**60 ELGIN - 8 DAY WATCH - 1932 - 7J - 22s**

ELGIN - 8 DAY WATCH - 1932 - 7j - 22s; Circa Year = 1932; Grade = 490; Size = 22s; Jewels = 7j; Mvmt Config = Openface; Mvmt Set = Pendant; Adj = N; Serial# 33594692; Additional Notes = Large 8-day clock. Case measures approximately 2-3/4" diameter.



Quantity: 1

**57 WALTHAM POCKET WATCH - 1896 - 17J - 18s**

WALTHAM POCKET WATCH - 1896 - 17j - 18s; Circa Year = 1896; Grade = Royal; Size = 18s; Jewels = 17j; Mvmt Config = Openface; Mvmt Set = Pendant; Adj = Y; Serial# 7752700; Additional Notes = 10K Gold Filled Case. Full Plate with a two-tone finish. 4,500 total production. Adjusted. Double sunk dial has some blemishes. Crystal has a chip near the 10.



Quantity: 1

**61 POCKET WATCH CHAIN FOB**

Approximately 5" in length has ornate pendant with blue & white crystals and two engraved spheres hanging on individual chains.



Quantity: 1

**ONLINE-ONLY: Pocket Watch Auction 3/3/2021-4/21/2021****LOT #****62 POCKET WATCH CHAIN FOB**

Approximately 6" in length has ornate ball with one ruby-colored crystal.

Quantity: 1

**63 POCKET WATCH CHAIN FOB**

Approximately 8" in total length with ribbon and pendant. The clasp is missing a part but will still fit tightly on belt.

Underbelly of pendant has engraved initial(s). Ribbon is twisted and needs to be unraveled by a more patient person than me.

Quantity: 1

**64 POCKET WATCH CHAIN**

Approximately 10" in length with alternating long and short bars.

Quantity: 1

**65 POCKET WATCH CHAIN**

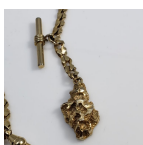
Approximately 12" length. This chain features alternating long textured & solid bars with short oval links.

Quantity: 1

**66 POCKET WATCH CHAIN**

Approximately 12" in length plus a 1" Gold Nugget pendant. This is NOT gold.

Quantity: 1

**67 POCKET WATCH CHAIN**

Hickok USA gold filled chain approximately 18" in total length. Includes key.

Quantity: 1

**LOT #****68 POCKET WATCH CHAIN**

Overall chain approximately 32" (16" loop). Tear-drop 12K gold filled pendant slides along the chain.

Quantity: 1

**69 POCKET WATCH CHAIN**

Overall chain approximately 52" (26" loop). Triangle shaped pendant slides along the chain.

Quantity: 1

**70 (3) POCKET WATCH CHAINS**

3 chains approximately 8" in length. Includes 2 keys.

Quantity: 1

**71 (5) POCKET WATCH CHAINS**

Three chains and 2 leather bands in varying lengths.

Quantity: 1

**72 VINTAGE PROTECTIVE METAL WATCH COVER**

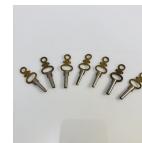
Measures approximately 1-1/4" square.

Quantity: 1

**73 (7) KEYS**

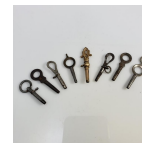
(7) KEYS

Quantity: 1

**74 (8) KEYS**

(8) KEYS

Quantity: 1



ONLINE-ONLY: Pocket Watch Auction 3/3/2021-4/21/2021

**LOT #**

---

**75 (2) SIZE 0s WATCH CASES**

Two Gold Filled pocket watch cases, size 0s. One is a full case. One is Openface.  
Quantity: 1



**76 (3) POCKET WATCH CASES**

Three pocket watch cases, various sizes.  
Quantity: 1



**77 (50) 2" x 3" Black Velvet Bags - NEW**

Can hold most 12s pocket watches or smaller. Qty 50.  
Quantity: 1



**78 (50) 2" x 3" Black Velvet Bags - NEW**

Can hold most 12s pocket watches or smaller. Qty 50.  
Quantity: 1

