

ONLINE-ONLY: Pocket Watch Auction 1/20/2021-5/5/2021

**LOT #**

**1 WALTHAM BROOCH WATCH - 14K GOLD - 1918 - 15j - 6/0**

WALTHAM BROOCH WATCH - 14K GOLD - 1918 - 15j - 6/0s; Grade = Sapphire; Size = 6/0s; Jewels = 15j; Mvmt Config = Openface; Mvmt Set = Pendant; Adj = Y; Serial# 22120005; Additional Notes = Wadsworth 14K case. There is a loop for the brooch, but missing brooch. Gold colored dial. Weight with movement = 0.56 oz or 15.96 grams.



Quantity: 1

**2 ELGIN POCKET WATCH - 14K GOLD - 1905 - 7j - 0s**

ELGIN POCKET WATCH - 14K GOLD - 1905 - 7j - 0s; Grade = 320; Size = 0s; Jewels = 7j; Mvmt Config = Hunting; Mvmt Set = Pendant; Adj = N; Serial# 11239986; Additional Notes = 14K Gold Case. Large initials engraved on both sides of case. Inside dust cover engraved "Hazel T. Kirk from Philip D. Armour, March 11th, 1896". 3/4 plate nickel finish. Double Roller. Case and dial in very good condition. Weight with movement = 1.52 oz or 43.15 grams.



Quantity: 1

**3 U.S. (WALTHAM, MASS) POCKET WATCH - 14K GOLD - 6s**

U.S. (WALTHAM, MASS) POCKET WATCH - 14K GOLD - 6s; Grade = n/a; Size = 6s; Jewels = n/a; Mvmt Config = Hunting; Mvmt Set = Lever; Adj = n/a; Serial# 123689; Additional Notes = Does NOT run. Does NOT wind. 14K Gold case. Inside case marking 14K, Warranted U.S. Assay. Inside dust cover marking 14K. Missing crystal. Beautiful, exquisite engraved case wrapped around a movement that doesn't work. Great opportunity to purchase a case for another movement. Weight with movement = 2.125 oz or



**LOT #**

60.24 grams.  
Quantity: 1

**4 WALTHAM POCKET WATCH - 14K GOLD - 1895 - 7j - 6s**

WALTHAM POCKET WATCH - 14K GOLD - 1895 - 7j - 6s; Grade = J; Size = 6s; Jewels = 7j; Mvmt Config = Hunting; Mvmt Set = Pendant; Adj = N; Serial# 6662641; Additional Notes = "14K Warranted" case marking. There is NO reference to year period under the 14K. Crown hallmark on case and dust cover. There is a bit of "flex" when pushing on the center of the dust cover...good indication of being gold. "CB" initials engraved on one side of case and scenic engraving on the other. Slight overextension on front hinge. Weight with movement = 2.165 oz or 61.38 grams.  
Quantity: 1



**5 WALTHAM POCKET WATCH - 1903 - 15j - 6s**

WALTHAM POCKET WATCH - 1903 - 15j - 6s; Grade = Seaside; Size = 6s; Jewels = 15j; Mvmt Config = Hunting; Mvmt Set = Pendant; Adj = N; Serial# 12755636; Additional Notes = Very good condition. Inside cover has Ships Wheel hallmark. Beautiful ornate case. Dust cover engraved "M.W. to Dena, Sept 3, 1895". Outer case also engraved "Dena Sommers". Dust cover will not prop open by itself. 3/4 plate in nickel pattern finish.  
Quantity: 1



ONLINE-ONLY: Pocket Watch Auction 1/20/2021-5/5/2021

**LOT #****6 ILLINOIS POCKET WATCH - A. LINCOLN - 1918 - 21j**

ILLINOIS POCKET WATCH - A. LINCOLN - 1918 - 21j - 12s; Grade = A. Lincoln; Size = 12s; Jewels = 21j; Mvmt Config = Openface; Mvmt Set = Pendant; Adj = Y; Serial# 3301000; Additional Notes = Bridge Plate. Nickel Finish. Double Roller. Adjusted 5 Positions, Temperature and Isochronism. Case warranted 25 years. Excellent condition. Quantity: 1

**7 ILLINOIS POCKET WATCH - 1920 - 17j - 12s**

ILLINOIS POCKET WATCH - 1920 - 17j - 12s; Grade = The Autocrat; Size = 12s; Jewels = 17j; Mvmt Config = Openface; Mvmt Set = Pendant; Adj = Y; Serial# 3748583; Additional Notes = Double sunk gold colored metal dial. Grade 405 - The Autocrat. Model 3. Double Roller. Adjusted 3 Positions and Temperature. Quantity: 1

**8 ILLINOIS POCKET WATCH - 1922 - 19j - 12s**

ILLINOIS POCKET WATCH - 1922 - 19j - 12s; Grade = 406; Size = 12s; Jewels = 19j; Mvmt Config = Openface; Mvmt Set = Pendant; Adj = Y; Serial# 4114133; Additional Notes = 10K rolled gold plate case. Adjusted 3 Positions and Temperature. Double Roller. Some tarnish is evident on the movement. Quantity: 1

**9 SOUTH BEND POCKET WATCH - 1916 - 19j - 12s**

SOUTH BEND POCKET WATCH - 1916 - 19j - 12s; Grade = 429; Size = 12s; Jewels = 19j; Mvmt Config = Openface; Mvmt Set = Pendant; Adj = Y; Serial# 858200; Additional Notes = Does NOT run continuously. Winds and runs for a short time and then stops. May just need cleaned/oiled. Adjusted 4 Positions, Temperature and Isochronism. Double roller. Bridge plate with nickel finish. Quantity: 1

**LOT #****10 TIFFANY POCKET WATCH - INCLUDES BOX - 1910 - 16j**

TIFFANY POCKET WATCH - INCLUDES BOX - 1910 - 16j - 12s; Grade = n/a; Size = 12s; Jewels = 16j; Mvmt Config = Hunting; Mvmt Set = Lever; Adj = Y; Serial# 2380330; Additional Notes = Manufactured by the Longines Watch Co for Tiffany & Co. Includes 2-1/2" x 3-1/4" Blue Box with debossed gold lettered "Tiffany & Co" on the box. Very clean dial and case in good condition. Some scratches on the dust cover from being poorly opened in the past. Pendant wind. Movement can be set by Lever or Key. No key included. Adjusted 3 Positions. Marking on the movement = "Made for Tiffany & Co. By The Longines Watch Co. Switzerland". Quantity: 1

**11 BALL POCKET WATCH - OFFICIAL RR STANDARD - 19j**

BALL POCKET WATCH - OFFICIAL RR STANDARD - 1905 - 19j - 16s; Grade = Official RR Standard; Size = 16s; Jewels = 19j; Mvmt Config = Openface; Mvmt Set = Lever; Adj = Y; Serial# B212267; Additional Notes = Dial and movement markings "Official RR Standard". 3/4 plate with nickel circle pattern finish and gilt inlay colors. "Ball Watch Co, Cleveland, O" and "Sapphire Pallets" markings on the movement. Sapphire pallet movement material. Hairline crack on the dial from Center to 11. Adjusted. Dueber Warranted 20 Year Case. Movement manufactured by Waltham. Quantity: 1

**12 E. HOWARD POCKET WATCH - 1913 - 21j - 16s**

E. HOWARD POCKET WATCH - 1913 - 21j - 16s; Grade = Series 10; Size = 16s; Jewels = 21j; Mvmt Config = Openface; Mvmt Set = Lever; Adj = Y; Serial# 1239206; Additional Notes = Railroad Grade. Adjusted 5 Positions, Temperature and Isochronism. Arrow and Star marking on movement. Bridge plate. Double Roller. Reed regulator. Bruguet hairspring. Double



**ONLINE-ONLY: Pocket Watch Auction 1/20/2021-5/5/2021****LOT #**

sunk dial. Damage on the dial near the lever.

Quantity: 1

**13 ELGIN POCKET WATCH - 1906 - 21j - 16s**

ELGIN POCKET WATCH - 1906 - 21j - 16s; Grade = Veritas; Size = 16s; Jewels = 21j; Mvmt Config = Openface; Mvmt Set = Lever; Adj = Y; Serial# 12318771; Additional Notes = Railroad Grade. 10K gold filled case. Model 9. Veritas. 3-Finger Bridge Plate with a nickel finish and gilt inlay color. Adjusted 5 Positions, Temperature and Isochronism. Double sink dial is in poor condition showing various cracks and needs cleaning. Amber tint crystal.



Quantity: 1

**14 ELGIN POCKET WATCH - 1922 - 21j - 16s**

ELGIN POCKET WATCH - 1922 - 21j - 16s; Grade = Father Time; Size = 16s; Jewels = 21j; Mvmt Config = Openface; Mvmt Set = Lever; Adj = Y; Serial# 24464501; Additional Notes = Grade 454 - Father Time. Adjusted 5 Positions. Data shows wind indicator is available but is not present on this watch. Various small dents on rear case. Crystal spins in the case, but does not fall out.



Quantity: 1

**15 HAMILTON POCKET WATCH - MILITARY - 1942-43 - 21j**

HAMILTON POCKET WATCH - MILITARY - 1942-43 - 21j - 16s; Grade = 992B; Size = 16s; Jewels = 21j; Mvmt Config = Openface; Mvmt Set = Lever; Adj = Y; Serial# C42464; Additional Notes = "US GOVT" and "992B" markings on the movement. Railroad Grade. This is a lever set and stem wind open faced watch and one of the finest watches ever made for use on the railroad. So revered were these watches that they were commissioned by the US Government who brought the 992B into service for the military in WWII. Adjusted 6 Positions & Temperature. 3/4 plate with nickel damascened finish. Montgomery dial 10K rolled gold plate

**LOT #**

case.

Quantity: 1

**16 HAMPDEN POCKET WATCH - 1915 - 19j - 16s**

HAMPDEN POCKET WATCH - 1915 - 19j - 16s; Grade = Railway; Size = 16s; Jewels = 19j; Mvmt Config = Openface; Mvmt Set = Lever; Adj = Y; Serial# 3325516; Additional Notes = Railroad Grade. 19 Jewel. "Dueber" marking on dial, large numerals. Movement markings include: HWC, Canton, O., Railway, 19 Jewels, Adjusted To Five Positions, Double Roller, Safety Pinion.



Quantity: 1

**17 ILLINOIS POCKET WATCH - BURLINGTON - 1909 - 19j**

ILLINOIS POCKET WATCH - BURLINGTON - 1909 - 19j - 16s; Grade = 185; Size = 16s; Jewels = 19j; Mvmt Config = Openface; Mvmt Set = Lever; Adj = Y; Serial# 2210994; Additional Notes = Private Label Movement markings include: Burlington Watch Co, Chicago USA, Double Roller, 19 Jewels, Adjusted to Temperature and Position, Safety Pinion. 3-Finger Bridge plate in nickel finish. Adjusted 3 Positions. Burlington marking on the dial. Warranted 20 Yr case.



Quantity: 1

**18 ILLINOIS POCKET WATCH - A. LINCOLN - 1914 - 21j**

ILLINOIS POCKET WATCH - A. LINCOLN - 1914 - 21j - 16s; Grade = A. Lincoln; Size = 16s; Jewels = 21j; Mvmt Config = Openface; Mvmt Set = Lever; Adj = Y; Serial# 2655313; Additional Notes = "A. Lincoln" marking on movement. Montgomery Double Sunk Dial. Railroad Grade. Adjusted 5 Positions, Temperature & Isochronism. Model 9. 10K gold filled case. Nice!



Quantity: 1

ONLINE-ONLY: Pocket Watch Auction 1/20/2021-5/5/2021

**LOT #****19 ILLINOIS POCKET WATCH - BUNN SPECIAL - 1923 - 21j**

ILLINOIS POCKET WATCH - BUNN SPECIAL - 1923 - 21j - 16s; Grade = Bunn Special; Size = 16s; Jewels = 21j; Mvmt Config = Openface; Mvmt Set = Lever; Adj = Y; Serial# 4458916; Additional Notes = "Bunn Special" markings on inside back case cover and movement. 10K Gold Filled Case. Model 9. Adjusted 6 Positions and Temperature. Double Roller. Movement has nickel finish with "Ray" Pattern. Ruby jewels. Overall in very good condition. If you are the winning bidder, please promise us that you will replace the green/amber acrylic plastic crystal with a new clear glass crystal. :)

Quantity: 1

**20 SOUTH BEND POCKET WATCH - STUDEBAKER - 1927 - 21j**

SOUTH BEND POCKET WATCH - STUDEBAKER - 1927 - 21j - 16s; Grade = Studebaker; Size = 16s; Jewels = 21j; Mvmt Config = Openface; Mvmt Set = Pendant; Adj = Y; Serial# 1200841; Additional Notes = Studebaker marking on the movement. Model 2. Beautiful Montgomery dial. Some scratches on the dust cover. 8 Total Adjustments including 5 Positions. Bridge plate. Double Roller.

Quantity: 1

**21 WALTHAM POCKET WATCH - 1913 - 21j - 16s**

WALTHAM POCKET WATCH - 1913 - 21j - 16s; Grade = Crescent St; Size = 16s; Jewels = 21j; Mvmt Config = Hunting; Mvmt Set = Lever; Adj = Y; Serial# 19096357; Additional Notes = Adjusted to 5 Positions. Movement markings include: Crescent St, Waltham, Mass, 21 Jewels, Adjusted, 5 Positions. Fahys Montauk case in good condition with initials engraved on one side. Clean double sunk dial has a faint crack running from the lever to the 8. Case cover hinge is slightly overextended.

Quantity: 1

**LOT #****22 WASHINGTON POCKET WATCH - 1908 - 21j - 16s**

WASHINGTON POCKET WATCH - 1908 - 21j - 16s; Grade = Army and Navy; Size = 16s; Jewels = 21j; Mvmt Config = Hunting; Mvmt Set = Lever; Adj = Y; Serial# 2032642; Additional Notes = 21 Jewel watch from the Washington Watch Co. Movement made by Illinois Watch Co. 3/4 plate with nickel finish. "Army and Navy" marking on the movement. Small hairline crack near the 1. Initials engraved on one side of case.

Quantity: 1

**23 ELGIN POCKET WATCH - 1888 - 15j - 18s**

ELGIN POCKET WATCH - 1888 - 15j - 18s; Grade = B.W. Raymond; Size = 18s; Jewels = 15j; Mvmt Config = Openface; Mvmt Set = Pendant; Adj = Y; Serial# 2837452; Additional Notes = Railroad Grade. Case in very good condition. Hairline crack at the 11, otherwise dial in very good condition. Crystal is scratch free but there is a small chip near the bead at the 7. See photos. Very clean.

Quantity: 1

**24 ELGIN POCKET WATCH - 1896 - 17j - 18s**

ELGIN POCKET WATCH - 1896 - 17j - 18s; Grade = G.M. Wheeler; Size = 18s; Jewels = 17j; Mvmt Config = Openface; Mvmt Set = Pendant; Adj = Y; Serial# 6100947; Additional Notes = Excellent Condition. 10K Gold Filled Case. Adjusted to Temperature. Full plate, gilt finish. Moseley regulator. Bruguet hairspring.

Quantity: 1

**25 ELGIN POCKET WATCH - STERLING - 1908 - 15j - 18s**

ELGIN POCKET WATCH - STERLING - 1908 - 15j - 18s; Grade = 316; Size = 18s; Jewels = 15j; Mvmt Config = Hunting; Mvmt Set = Lever; Adj = N; Serial# 13493158; Additional Notes = Sterling Silver Case. Moseley regulator, Bruguet hairspring. Very nice ornate case on both sides. Weight with movement = 4.11 oz or





ONLINE-ONLY: Pocket Watch Auction 1/20/2021-5/5/2021

**LOT #**

116.53 grams.

Quantity: 1

**26 FREDONIA POCKET WATCH - PVT LABEL JOLIET,****IL - 11j**

FREDONIA POCKET WATCH - PVT LABEL JOLIET, IL - 11j - 18s; Grade = Private Label; Size = 18s; Jewels = 11j; Mvmt Config = Hunting; Mvmt Set = Lever; Adj = Y; Serial# 20131; Additional Notes = Salesman Case with clear view of movement. Private Label movement markings "T.W. Martin, Joliet, Ill". Other markings include Special and Anti-Magnetic Spring, Adjusted, Safety Pinion. Fredonia, NY marking on the face.

Quantity: 1

**27 HAMILTON POCKET WATCH - 1904 - 21j - 18s**

HAMILTON POCKET WATCH - 1904 - 21j - 18s; Grade = 940; Size = 18s; Jewels = 21j; Mvmt Config = Openface; Mvmt Set = Lever; Adj = Y; Serial# 411243; Additional Notes = Railroad Grade. Adjusted 5 Positions, Temperature and Isochronism. Full plate with nickel finish and gilt inlay colors. Goldthwait regulator. Bruguet hairspring. Patent Motor Barrel. Double sunk dial has several hairline cracks.

Quantity: 1

**28 HAMILTON POCKET WATCH - 1907 - 19j - 18s**

HAMILTON POCKET WATCH - 1907 - 19j - 18s; Grade = 944; Size = 18s; Jewels = 19j; Mvmt Config = Openface; Mvmt Set = Lever; Adj = Y; Serial# 494438; Additional Notes = Railroad Grade. Adjusted 5 Positions, Temperature and Isochronism. Full plate with nickel finish and gilt inlay colors. Goldthwait regulator. Bruguet hairspring. Patent Motor Barrel. Double sunk dial with gold colored second hand.

Quantity: 1

**LOT #****29 ILLINOIS POCKET WATCH - 1876 - 15j - 18s**

ILLINOIS POCKET WATCH - 1876 - 15j - 18s; Grade = Miller; Size = 18s; Jewels = 15j; Mvmt Config = Either; Mvmt Set = Key; Adj = Y; Serial# 67685; Additional Notes = Beautiful Coin Silver case. Includes key. Very clean inside and out. Two very small pin holes on back case.

Quantity: 1

**30 ILLINOIS POCKET WATCH - 1887 - 11j - 18s**

ILLINOIS POCKET WATCH - 1887 - 11j - 18s; Grade = Railroader Grade 4; Size = 18s; Jewels = 11j; Mvmt Config = Hunting; Mvmt Set = Lever; Adj = N; Serial# 705266; Additional Notes = Rare model, only 4,500 were made. Engraved Locomotive on the movement. Chalmers regulator. Porcelain enamel Canadian-style dial with roman numerals 1-12 paired with smaller fancy Arabic-style numbers 13-24. Case shows some wear on both sides, but no major dents. Case marking "R.W. Sears" = Richard Warren Sears...the founder of Sears, Roebuck & Co.

Quantity: 1

**31 ROCKFORD POCKET WATCH - 1876 - 9j - 18s**

ROCKFORD POCKET WATCH - 1876 - 9j - 18s; Grade = n/a; Size = 18s; Jewels = 9j; Mvmt Config = Either; Mvmt Set = Key; Adj = N; Serial# 20576; Additional Notes = Private Label movement marking "D.I. Seifert, Phillipsburg NJ". Coin Silver Case. Includes key. Raised crystal. "Rockford" marking on the dial.

Quantity: 1

**32 ROCKFORD POCKET WATCH - 1876 - 9j - 18s**

ROCKFORD POCKET WATCH - 1876 - 9j - 18s; Grade = n/a; Size = 18s; Jewels = 9j; Mvmt Config = Either; Mvmt Set = Key; Adj = N; Serial# 57104; Additional Notes = Coin Silver case. Includes key. Crystal has scratches and dial shows edge damage at 8 & 11.

Quantity: 1



ONLINE-ONLY: Pocket Watch Auction 1/20/2021-5/5/2021

**LOT #****33 ROCKFORD POCKET WATCH - 1885 - 15j - 18s**

ROCKFORD POCKET WATCH - 1885 - 15j - 18s; Grade = 43; Size = 18s; Jewels = 15j; Mvmt Config = Hunting; Mvmt Set = Lever; Adj = Y; Serial# 235468;

Additional Notes = Full nickel plate movement. Adjusted to Temp.

Quantity: 1

**34 SETH THOMAS POCKET WATCH - 1888-1898 - 15j - 18s**

SETH THOMAS POCKET WATCH - 1888-1898 - 15j - 18s; Grade = 70; Size = 18s; Jewels = 15j; Mvmt Config =

Openface; Mvmt Set = Lever; Adj = N; Serial# 25671; Additional Notes = Coin Silver case. Pendant wind, Lever set.

Model 3. Gilt finish. Raised crystal. Nice, clean watch. Info from [seththomasresearch.com](http://seththomasresearch.com). Check out their website.

Quantity: 1

**35 SETH THOMAS POCKET WATCH - 1888-1900 - 15j - 18s**

SETH THOMAS POCKET WATCH - 1888-1900 - 15j - 18s; Grade = Earle; Size = 18s; Jewels = 15j; Mvmt Config = Either; Mvmt Set = Lever; Adj = n/a; Serial# 68050; Additional Notes = 10-sided Decagon Coin Silver Case. Model 2. Grade 52. Very clean. Case in very good condition. PW/LS.

Quantity: 1

**36 WALTHAM POCKET WATCH - 1866 - 7j - 18s**

WALTHAM POCKET WATCH - 1866 - 7j - 18s; Grade = P.S. Bartlett; Size = 18s; Jewels = 7j; Mvmt Config = Either; Mvmt Set = Key; Adj = Y; Serial# 208039; Additional Notes = Includes key.

Quantity: 1

**LOT #****37 WALTHAM POCKET WATCH - 1867 - 11j - 18s**

WALTHAM POCKET WATCH - 1867 - 11j - 18s; Grade = Home Watch Co; Size = 18s; Jewels = 11j; Mvmt Config = Either; Mvmt Set = Key; Adj = Y; Serial# 315566; Additional Notes = Coin Silver case.

Includes key. "Home Watch Co" marking on the movement. Very faint crack on the dial near the 6 & 7. Otherwise, clean watch.

Quantity: 1

**38 WALTHAM POCKET WATCH - 1872 - 7j - 18s**

WALTHAM POCKET WATCH - 1872 - 7j - 18s; Grade = Wm. Ellery; Size = 18s; Jewels = 7j; Mvmt Config = Either; Mvmt Set = Key; Adj = Y; Serial# 612285; Additional Notes = Coin Silver Case. No key. Overextension on cover hinge. Case shows wear on both sides.

Quantity: 1

**39 WALTHAM POCKET WATCH - 1873 - 11j - 18s**

WALTHAM POCKET WATCH - 1873 - 11j - 18s; Grade = P.S. Bartlett; Size = 18s; Jewels = 11j; Mvmt Config = Either; Mvmt Set = Key; Adj = Y; Serial# 699930; Additional Notes = Does NOT run.

10-sided Decagon Coin Silver Case. Was fully wound when inspected. No key. Minor small dents on back case.

Quantity: 1

**40 WALTHAM POCKET WATCH - 1873 - 11j - 18s**

WALTHAM POCKET WATCH - 1873 - 11j - 18s; Grade = P.S. Bartlett; Size = 18s; Jewels = 11j; Mvmt Config = Either; Mvmt Set = Key; Adj = Y; Serial# 706944; Additional Notes = Coin Silver case. Full plate with gilt finish. Adjusted. Clean dial.

Case has a few dents but nothing major. Movement feels slightly loose in the case.

Quantity: 1



ONLINE-ONLY: Pocket Watch Auction 1/20/2021-5/5/2021

**LOT #****41 WALTHAM POCKET WATCH - 1875 - 15j - 18s**

WALTHAM POCKET WATCH - 1875 - 15j - 18s; Grade = W.W.Co.; Size = 18s; Jewels = 15j; Mvmt Config = Either; Mvmt Set = Key; Adj = Y; Serial# 776149; Additional Notes = Adjusted to position. Includes key. Raised crystal with minor scratches. There are cracks on the dial and it doesn't fit snug in the case (however, still runs good).



Quantity: 1

**42 WALTHAM POCKET WATCH - 1881 - 15j - 18s**

WALTHAM POCKET WATCH - 1881 - 15j - 18s; Grade = Appleton Tracy & Co; Size = 18s; Jewels = 15j; Mvmt Config = Openface; Mvmt Set = Lever; Adj = Y; Serial# 1555348; Additional Notes = Coin Silver case. Adjusted to Position. Pendant wind, Lever Set.



Quantity: 1

**43 WALTHAM POCKET WATCH - 1904 - 21j - 18s**

WALTHAM POCKET WATCH - 1904 - 21j - 18s; Grade = 845; Size = 18s; Jewels = 21j; Mvmt Config = Openface; Mvmt Set = Lever; Adj = Y; Serial# 14154501; Additional Notes = 21 Jewel. Adjusted 5 Positions, Temperature & Isochronism. Double Roller. Full plate, nickel finish. Bruguet hairspring. Ruby & Sapphire jewel material. Sapphire pallet movement material. Dial has cracks between 10 & 1. Raised crystal and case in good condition.



Quantity: 1

**44 WALTHAM POCKET WATCH - 1907 - 17j - 18s**

WALTHAM POCKET WATCH - 1907 - 17j - 18s; Grade = 825; Size = 18s; Jewels = 17j; Mvmt Config = Hunting; Mvmt Set = Lever; Adj = N; Serial# 15657719; Additional Notes = Full plate with nickel finish. Bruguet hairspring. Double sunk dial in good condition. Large full case in fair condition. Slight overextension on case cover hinge. A few small dents on dust cover.

**LOT #**

Quantity: 1

**45 ROCKFORD 8 DAY DESK/TRAVEL CLOCK**

ROCKFORD 8 DAY DESK/TRAVEL CLOCK; Grade = ; Size = 37s; Jewels = 6j; Mvmt Config = Openface; Mvmt Set = Pendant; Adj = Y; Serial# 124017; Additional Notes = Movement markings: "Rockford Watch Co, Two 2 Adjustments, Six 6 Jewels, Swiss". Numbers on the movement 124017 do not relate to any pertinent Rockford Database Info. The stand also has a marking 2774177. Swiss made watch with Rockford markings on the dial and movement. Dial markings include: Rockford, 8 Day, Swiss. Inside case marking "EAM" with an arrow through it.



Quantity: 1

**46 GIRARD PERREGAUX WRISTWATCH - VINTAGE**

GIRARD PERREGAUX WRISTWATCH - VINTAGE; Grade = 285; Size = n/a; Jewels = 17j; Mvmt Config = Hunting; Mvmt Set = Pendant; Adj = n/a; Serial# n/a; Additional Notes = Mechanical wristwatch. Includes the original felt lined baby blue box. 10K gold filled top caps, Stainless Steel bottom caps. Movement markings include: Girard Perregaux & Co, Seventeen 17 Jewels, 285, Swiss, GXM. Numerals on dial glow in the dark. 34-36 mm movement. 30 Minute Register at 3, Constant Seconds at 9 and 12 Hour Recorder at 6. Inside case signed Girard-Perregaux Switzerland with the GP logo and is also stamped ENVERSTEEL. Runs and is just simply...awesome!



Quantity: 1

**47 LONGINES WRISTWATCH IN ORIGINAL BOX**

LONGINES WRISTWATCH IN ORIGINAL BOX; Grade = 9L; Size = n/a; Jewels = 17j; Mvmt Config = Hunting; Mvmt Set = Pendant; Adj = n/a; Serial# 6799576; Additional Notes = Includes matching original vintage Longines wood box, leather pamphlet and cardboard outer box. 10K gold filled case. 1/20 10K gold filled tops on Speidel band. Curvex crystal



**ONLINE-ONLY: Pocket Watch Auction 1/20/2021-5/5/2021****LOT #**

and the dial shows wear. MXT, 9L markings on movement.

Quantity: 1

**48 MARC NICOLET WRISTWATCH CASE - (no watch)**

MARC NICOLET WRISTWATCH CASE (no watch); Grade = ; Size = ; Jewels = ; Mvmt Config = ; Mvmt Set = ; Adj = ; Serial# ; Additional Notes = CASE ONLY. Blue case with felt inside. Inside cover reads "Marc Nicolet - World Famous Since 1886 - Unbreakable Mainspring Guaranteed for Life". Measures 4-1/2" x 3-1/2" x 1-1/2".



Quantity: 1

**49 Brotherhood of Railroad Trainmen Watch Fob Chain**

18K gold filled chain 12" in length.

Quantity: 1

**50 Chain Ribbon Watch Fob with Clip**

5" with pendant and clip. Very nice. Clip functions properly.

Quantity: 1

**51 Knights of Pythias Pendant - no chain**

This Knights of Pythias pendant was mixed in with the other chains and we thought we would offer it as a stand alone. The medieval armor at the top of the pendant toggles forward and back. Measurements 1-5/8" x 7/8".



Quantity: 1

**52 Mesh Ribbon Watch Fob with Clip**

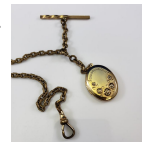
4" length with pendant. Clip functions.

Quantity: 1

**LOT #****53 Watch Fob Locket - ornate**

12" length. Very clean locket, no scratches.

Quantity: 1

**54 Watch Fob with Sphere & Cube**

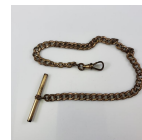
9" length. The cube can move independently along the chain. The cube has a ruby-like jewel on the one side but is missing the jewel on the other.

Quantity: 1

**55 Pocket Watch Chain with T-bar**

11" length.

Quantity: 1

**56 Pocket Watch Chain**

12" length. This chain features alternating long textured bars in an attractive pattern.

Quantity: 1

**57 Pocket Watch Chain**

12" length. This chain features alternating long textured & solid bars with short oval links.

Quantity: 1

**58 (2) Pocket Watch Chains**

14" full length. 16" full length. One stationary clasp, one swivel.

Quantity: 1





ONLINE-ONLY: Pocket Watch Auction 1/20/2021-5/5/2021

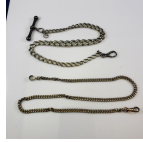
**LOT #**

---

**59 (2) Pocket Watch Chains**

One is 12" length with T-bar and weighs 0.85 oz. The other chain is 16" in length.

Quantity: 1



**60 (3) Pocket Watch Chains**

11", 12" and 13".

Quantity: 1



**61 (2) T-bars (or clips) with Chain**

One has a pendant with the seal of the United States the size of a dime.

Quantity: 1



**62 (3) Clips with Chain**

Each is 5-1/2" in length and the clips function properly.

Quantity: 1

