

NATIONAL TRAILER REPAIR

RETIREMENT AUCTION — COMPLETE TRAILER REPAIR SHOP & MOBILE SERVICE FOR OVER 41 YEARS

Thursday, November 5, 2020 at 10:00 AM

Address: 110 Anton Drive, Romeoville, IL 60446 — Parking at 131 Anton Drive.

Directions: From I-55/IL-53 [Exit 267] in Bolingbrook, head south on IL-53/Bolingbrook Dr for 1 mile and turn right onto Marquette Drive at the McDonalds, continue for approx ½ mile to Anton Dr, turn right and there is ample parking at 131 Anton Dr (2nd left on Anton). Trailers are welcome.

National Trailer Repair has been in business over 41 years. This retirement auction will be held inside their 6-bay building. Forklifts available to load your items. Everything in good working condition.



TRUCKS:

2005 GMC W4500 14' FRP BOX SERVICE TRUCK, 57k mi, 5.2L L4 Turbo Diesel, completely stocked and ready-for-work, gas welder, Ingersoll Rand 2475 Air Compressor w/Honda GX390 elec start, parts bins included. VIN INFO ON WEBSITE.

1997 OTTAWA YT-30 COMMANDO SPOTTER TRUCK, 46k mi, 16001 hrs, 5.9L Diesel.

2001 CHEVY SILVERADO 2500HD PICKUP, 4WD, w/V-Plow, 49k mi, 6.0L V8 Gas, 2-Door.

SKID STEER: 1999 CASE 1845C, 1042 hrs, Loader Bucket. 10' Snow Blade sold separately. SN: JAF0252512.

TRAILERS: (2) 53' 2004 Great Dane Box Trailers; 57' Great Dane Rail Storage Trailer.

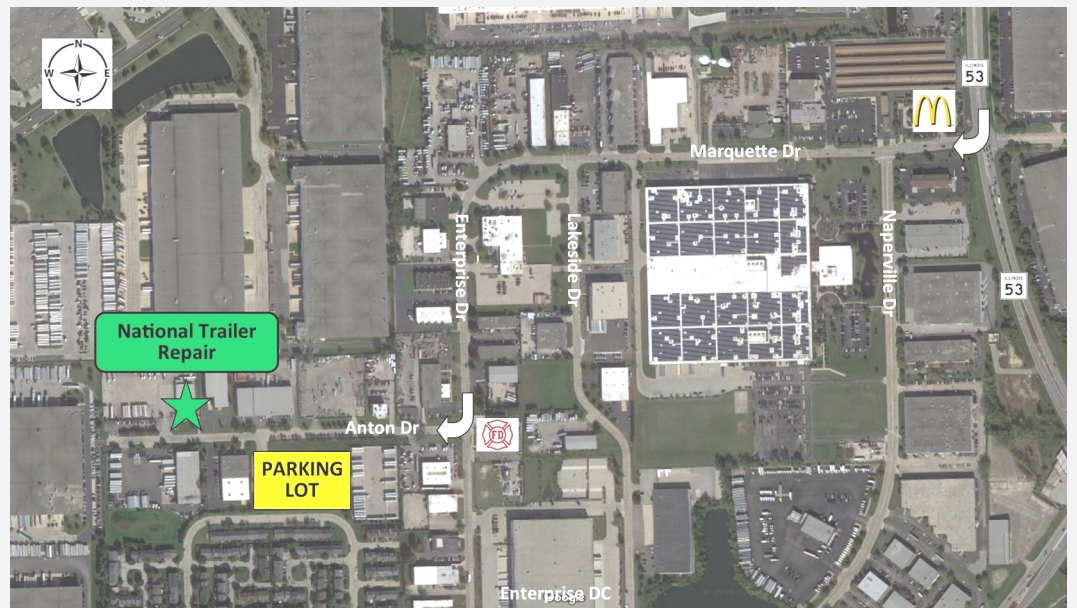
HD EQUIPMENT: Famco 652 Foot Shear – 16ga capacity, 52" blade, extra new foot pedal; (2) Gray TNT-550 7-ton Air Lift Bumper Jacks; Millermatic 200 CV-DC Welder; Millermatic 250 CV -DC Welder; Miller Dialarc 250-A AC-DC Welder; Miller Shopmaster 300 AC-DC Welder w/S-21E wire feeder; Millermatic Bluestar Gas Engine Driven Welder; Lincoln Idealarc Welder; Dayton Pedestal Industrial Grinder.

TOOLS & EQUIPMENT: Several ½", ¾" and 1" Air Impacts Wrenches including ½" Chicago Pneumatic CP-7750 Turbo Impact Wrench; Various Percussive Tools; Air Pop Rivet Guns; Circular Saws; Reciprocating Saws; Chicago Pneumatic Angle & Vertical Grinders; Air Shears & Chisels; Rivet Hammers & Squeezers; Air Sanders & Polishers; Various Air Hose; Asst Wrench Sets; Snap-On Ratchets & Extensions; Impact Socket Sets ½" to 1"; Impact Socket Sets; Milw Sawzall; Chisels; Files; Hammers; Vise Grips; Nut Drivers; Screwdrivers; Snips; Sledges; Assorted Shop Supplies; Drop Cords; DeWalt Cordless Tools (18v/20v); Lincoln 12V Grease Gun; Air Greasers; HVLP Spray Guns; Hand Punches; Tap & Die & Rethreading Sets; Battery Chargers; 3/4-ton to 1-1/2-ton Lever Chain Hoists & Chain Binders; Bottle Jacks; Trailer Load Straps; (2) WARN Industries 4700 DC 12V Elec Winches; C-Clamps; Hitachi C10FCH 10" Compound Miter Saw w/Laser; Fluke 374 Clamp Meter; Kent Moore Nexiq MPSI Pro-Link 9000 J38500-1 Computer Diagnostic Code Reader; Nexiq USB Link Vehicle Interface; Hurricane Pro Plus Blower.

LANDSCAPE EQUIPMENT: Western 2500 Tailgate Salt Spreader; John Deere 345 Lawn Tractor, 44" Piranha Mulching Deck, 18HP, 862 hrs, PS; Craftsman 24" Elec Start Snow Blower, 6-spd FWD 2-REV; Brooms; Rakes; Shovels; ATV Salt Spreader; (2) Gas Push 21" Mowers; Tow-Behind Dethatcher; RoundUp 4-gal Sprayer w/shoulder straps; Diamond Plate Aluminum Truck Tool Box; 200-gal Poly Tank w/Sotera 825 Digital Meter; Goodyear 12-16.5NHS tire, new.

15+ Shelves full of Trailer Repair Parts – various mfg (rivets, trailer bolts, door hardware, hinges, latches, marker lights, wire harnesses, pigtails, butts, handles, keepers and more); (3) Bolt Bins with contents.

20+ Steel Racking, Shelves and Pipe Racks – Rolling Wood Bins; (3) 3-Locker Sets, clean; Craftsman Tool Chest; Barrel Carts; (3) Dollies; (2) Furniture Dollies; (6) Torch Carts; HD Portable Trailer Jack; Several Service Carts; (3) Steel Work Benches; (12) Assorted Werner Ladders; 12"x12' Werner Alum Plank; (4) 12' Scaffold Units; Wright Self Dumping Hopper; 2-ton Foldable Shop Crane; 20-ton Railroad Jacks; Lincoln 10-ton Jack Stands; Several 6-ton Jack Stands; Trailer Hand Cranks; Trailer Post Jacks; Spreader Bars.



Richard A. Olson & Associates, Inc
531 W Bedford Rd, Morris IL 60450

Richard A. Olson IL License #440.000585
815-942-4266 (o) 815-258-3003 (c)

Erik C. Olson IL License #441.001909
815-942-4266 (o) 815-931-0699 (c)



Terms: Cash, Check or Credit Card with proper ID on day of sale. 5% Fee applied to Credit Card Payments. Nothing removed until settled. All items are being sold as is with no stated or implied warranty. Sale day announcements take precedence over printed material. Buyers are responsible for all items after sold. This is a **LIVE** auction, must be present to bid. **NO BUYERS PREMIUM!**

OVER 250 PHOTOS ON WEBSITE!

www.richardaolson.com

