

Pocket Watch Auction (online-only) 8/18/2020-9/1/2020

LOT #

---

**1 WALTHAM POCKET WATCH - 14K - 1911 - 17j - 6/0s**

WALTHAM POCKET WATCH - 14K - 1911 - 17j - 6/0s; Grade = Ruby; Size = 6/0s; Jewels = 17j; Mvmt Config = Openface; Mvmt Set = Pendant; Adj = Y; Serial# 18160261; Addt'l Notes = 14K Waltham case. Does not run. Hinge pin missing. Initials on the back case cover. 0.6 oz w/movement.



**2 WALTHAM PENDANT WATCH - 14K - 1923 - 7j - 6/0s**

WALTHAM PENDANT WATCH - 14K - 1923 - 7j - 6/0s; Grade = 510; Size = 6/0s; Jewels = 7j; Mvmt Config = Openface; Mvmt Set = Pendant; Adj = Y; Serial# 24309585; Addt'l Notes = 14K Fine 585/1000 octagon case with ROY marking. "AAF" initials on outside case. Scratches on crystal. Pendant wind/set. 0.8 oz w/movement.



**3 HAMPDEN POCKET WATCH - 1904 - 15j - 3/0s**

HAMPDEN POCKET WATCH - 1904 - 15j - 3/0s; Grade = Diadem; Size = 3/0s; Jewels = 15j; Mvmt Config = Hunting; Mvmt Set = Lever; Adj = N; Serial# 2008071; Addt'l Notes = Does not run. Pendant wind/Lever set. Dueber Special case. 1.1 oz w/movement.



**4 ELGIN POCKET WATCH - 1894 - 11j - 0s**

ELGIN POCKET WATCH - 1894 - 11j - 0s; Grade = 110; Size = 0s; Jewels = 11j; Mvmt Config = Hunting; Mvmt Set = Pendant; Adj = N; Serial# 5130250; Addt'l Notes = Watch shows some wear around the crystal. 1.2 oz w/movement.



LOT #

---

**5 ELGIN POCKET WATCH - 1911 - 7j - 0s**

ELGIN POCKET WATCH - 1911 - 7j - 0s; Grade = 320; Size = 0s; Jewels = 7j; Mvmt Config = Hunting; Mvmt Set = Pendant; Adj = N; Serial# 15035658; Addt'l Notes = 3/4 plate. Double-Roller. Full ornate case. 14K gold filled case with several dents. 1.0 oz w/movement.



**6 ILLINOIS POCKET WATCH - STERLING - 11j - 0s**

ILLINOIS POCKET WATCH - STERLING - 1905 - 11j - 0s; Grade = 33; Size = 0s; Jewels = 11j; Mvmt Config = Hunting; Mvmt Set = Pendant; Adj = N; Serial# 1795111; Addt'l Notes = Private label "Washington Watch Co" marking on movement and dial. Full Sterling case. Made for retailer Montgomery Ward & Co. 1.4 oz w/movement.



**7 UNKNOWN POCKET WATCH - SILVER - 0s**

UNKNOWN POCKET WATCH - SILVER - 0s; Grade = n/a; Size = 0s; Jewels = n/a; Mvmt Config = Openface; Mvmt Set = Key; Adj = n/a; Serial# 113602; Addt'l Notes = 0.800 silver case and dust cover. Ran for a short time, then stopped. Consider does not run until cleaned/oiled. Fancy dial. Engraved case. Key wind/Key Set, no key. Guivre marking on dust cover. 1.6 oz w/movement.



**Pocket Watch Auction (online-only) 8/18/2020-9/1/2020****LOT #****8 ELGIN POCKET WATCH - 1892 - 7j - 6s**

ELGIN POCKET WATCH - 1892 - 7j - 6s;  
Grade = 117; Size = 6s; Jewels = 7j; Mvmt  
Config = Hunting; Mvmt Set = Pendant; Adj =  
N; Serial# 4449825; Addt'l Notes = Full  
engraved case. Dust cover engraved "Anna  
Parrish". 2.2 oz w/movement.

**9 ELGIN POCKET WATCH - 14K - 1905 - 7j - 6s**

ELGIN POCKET WATCH - 14K - 1905 - 7j -  
6s; Grade = 286; Size = 6s; Jewels = 7j; Mvmt  
Config = Hunting; Mvmt Set = Pendant; Adj =  
N; Serial# 11512503; Addt'l Notes = 14K gold  
case. 14K marking inside cover. Indian head  
marking inside dust cover. Full ornate case. 2.1  
oz w/movement.

**10 WALTHAM POCKET WATCH - 1893 - 7j - 6s**

WALTHAM POCKET WATCH - 1893 - 7j -  
6s; Grade = J; Size = 6s; Jewels = 7j; Mvmt  
Config = Hunting; Mvmt Set = Pendant; Adj =  
N; Serial# 5609428; Addt'l Notes = Does not  
wind. Does not run. 2.0 oz w/movement.

**11 WALTHAM POCKET WATCH - 1907 - 16j - 6s**

WALTHAM POCKET WATCH - 1907 - 16j -  
6s; Grade = Lady Waltham; Size = 6s; Jewels =  
16j; Mvmt Config = Hunting; Mvmt Set =  
Pendant; Adj = Y; Serial# 16077395; Addt'l  
Notes = Full gold filled case. Inside case  
engraved "M Aurare Paquette"? 2.0 oz  
w/movement.

**LOT #****12 ELGIN POCKET WATCH - 1904 - 7j - 12s**

ELGIN POCKET WATCH - 1904 - 7j - 12s;  
Grade = 234; Size = 12s; Jewels = 7j; Mvmt  
Config = Openface; Mvmt Set = Pendant; Adj =  
N; Serial# 10406134; Addt'l Notes = Cracks on  
the dial. Small initials on back case. 3/4 plate.  
2.5 oz w/movement.

**13 ELGIN POCKET WATCH - 1912 - 7j - 12s**

ELGIN POCKET WATCH - 1912 - 7j - 12s;  
Grade = 301; Size = 12s; Jewels = 7j; Mvmt  
Config = Hunting; Mvmt Set = Pendant; Adj =  
N; Serial# 16791958; Addt'l Notes = Full ornate  
case. Initials engraved on dust cover with date  
July 1913. Cover lid has slight overextension.  
Back lid does not clasp shut. Double roller.  
Dueber special case. 2.5 oz w/movement.

**14 ELGIN POCKET WATCH - 1921 - 7j - 12s**

ELGIN POCKET WATCH - 1921 - 7j - 12s;  
Grade = 303; Size = 12s; Jewels = 7j; Mvmt  
Config = Openface; Mvmt Set = Pendant; Adj =  
N; Serial# 23765925; Addt'l Notes = Dial is  
dirty in places. Double Roller. Movement flips  
out. Blemish on back case. 2.0 oz w/movement.

**15 HAMILTON POCKET WATCH - 1913 - 19j - 12s**

HAMILTON POCKET WATCH - 1913 - 19j -  
12s; Grade = 900; Size = 12s; Jewels = 19j;  
Mvmt Config = Openface; Mvmt Set = Pendant;  
Adj = Y; Serial# 1757127; Addt'l Notes = 14K  
gold filled Hamilton case. Adjusted to 5  
Positions, Temperature and Isochronism. See  
hallmark photo. Other info from  
pocketwatchdatabase.com include: Only Sold  
Cased by Hamilton. Jewel Material: Ruby &  
Sapphire. Jewel Setting: Raised Gold Settings  
(Screw-Set). Barrel: Patent Motor. Train  
Material: Gold. Center Wheel Material: Gold.  
Regulator: Micrometer. Hairspring: Breguet.  
Pallet Jewel Material: Sapphire. 2.2 oz  
w/movement.



## Pocket Watch Auction (online-only) 8/18/2020-9/1/2020

**LOT #****16 HAMILTON POCKET WATCH - 1929 - 17j - 12s**

HAMILTON POCKET WATCH - 1929 - 17j - 12s; Grade = 912; Size = 12s; Jewels = 17j; Mvmt Config = Openface; Mvmt Set = Pendant; Adj = Y; Serial# 3414353; Addt'l Notes = First year of the rotating seconds dial, known as the "Secometer" by Hamilton. Clean dial and case. 2.1 oz w/movement.

**17 HAMPDEN POCKET WATCH - 1906 - 15j - 12s**

HAMPDEN POCKET WATCH - 1906 - 15j - 12s; Grade = General Stark; Size = 12s; Jewels = 15j; Mvmt Config = Openface; Mvmt Set = Pendant; Adj = n/a; Serial# 2205714; Addt'l Notes = Fancy dial. Dueber Special case. Bridge plate. 2.4 oz w/movement.

**18 ILLINOIS POCKET WATCH - 1919 - 19j - 12s**

ILLINOIS POCKET WATCH - 1919 - 19j - 12s; Grade = Penn Special; Size = 12s; Jewels = 19j; Mvmt Config = Openface; Mvmt Set = Pendant; Adj = Y; Serial# 3580385; Addt'l Notes = Damage on the dial between 7 & 8. Pendant wind/set. One of the hands needs adjusting, they are sticking. Adjusted to 3 positions and temperature. 2.1 oz w/movement.

**19 ILLINOIS POCKET WATCH - 1927 - 17j - 12s**

ILLINOIS POCKET WATCH - 1927 - 17j - 12s; Grade = 525; Size = 12s; Jewels = 17j; Mvmt Config = Openface; Mvmt Set = Pendant; Adj = Y; Serial# 4855992; Addt'l Notes = "The Marquis Autocrat" making on the movement. Motor Barrel. Adjusted 3 Positions. 3/4 Plate. Beautiful dial with shiny gold numbers. 1.6 oz w/movement.

**LOT #****20 KNICKERBOCKER POCKET WATCH - 12s**

KNICKERBOCKER POCKET WATCH - 12s; Grade = n/a; Size = 12s; Jewels = n/a; Mvmt Config = Openface; Mvmt Set = Pendant; Adj = N; Serial# n/a; Addt'l Notes = SWISS. "Dollar Watch" company. White dial with tinted plastic crystal. Dust cover engraved "Earl Hall From Mother Jan 11, 1925". 2.0 oz w/movement.

**21 UNKNOWN POCKET WATCH - 1880s - 12s**

UNKNOWN POCKET WATCH - 1880s - 12s; Grade = n/a; Size = 12s; Jewels = n/a; Mvmt Config = Openface; Mvmt Set = Key; Adj = n/a; Serial# n/a; Addt'l Notes = The only visible marking on the movement is a Reptile/Lizard and initials J.F.F. Key wind/set. Key included. 3.0 oz w/movement.

**22 WALTHAM POCKET WATCH - 1925 - 19j - 12s**

WALTHAM POCKET WATCH - 1925 - 19j - 12s; Grade = 239; Size = 12s; Jewels = 19j; Mvmt Config = Openface; Mvmt Set = Pendant; Adj = Y; Serial# 25028984; Addt'l Notes = Stem doesn't stay down. "M.S." engraved on back cover. Gold colored dial. Adjusted to Temp. 2.1 oz w/movement.

**23 AGASSIZ POCKET WATCH - 16s**

AGASSIZ POCKET WATCH - 16s; Grade = n/a; Size = 16s; Jewels = n/a; Mvmt Config = Openface; Mvmt Set = Lever; Adj = Y; Serial# 135565; Addt'l Notes = Pendant wind/Lever set. Keystone Star case. Superior Grade Agassiz markings on the movement. Year unknown. 3.6 oz w/movement.



## Pocket Watch Auction (online-only) 8/18/2020-9/1/2020

**LOT #****24 E. HOWARD POCKET WATCH - 1911 - 19j - 16s**

E. HOWARD POCKET WATCH - 1911 - 19j - 16s; Grade = Series O?; Size = 16s; Jewels = 19j; Mvmt Config = Openface; Mvmt Set = Pendant; Adj = Y; Serial# 1005078; Addt'l Notes = Pendant wind/Lever Set. Crack between 1 & 2. Small dent on back. 3.5 oz w/movement.

**LOT #****28 HAMILTON POCKET WATCH - 1917 - 17j - 16s**

HAMILTON POCKET WATCH - 1917 - 17j - 16s; Grade = 956; Size = 16s; Jewels = 17j; Mvmt Config = Openface; Mvmt Set = Pendant; Adj = Y; Serial# 1285771; Addt'l Notes = Roman numerals on dial. Clean dial & crystal. 3.5 oz w/movement.

**25 ELGIN POCKET WATCH - 1884 - 11j - 16s**

ELGIN POCKET WATCH - 1884 - 11j - 16s; Grade = 93; Size = 16s; Jewels = 11j; Mvmt Config = Hunting; Mvmt Set = Lever; Adj = N; Serial# 1497958; Addt'l Notes = Full Dueber engraved case with anchor hallmark. 3/4 plate. Beautiful movement for being 136 yrs old. 4.3 oz w/movement.

**29 HAMPDEN POCKET WATCH - 1901 - 17j - 16s**

HAMPDEN POCKET WATCH - 1901 - 17j - 16s; Grade = General Stark; Size = 16s; Jewels = 17j; Mvmt Config = Hunting; Mvmt Set = Lever; Adj = N; Serial# 1582020; Addt'l Notes = Dueber Special case is in rough shape. Missing crystal. Various cracks on dial. 3.6 oz w/movement.

**26 ELGIN POCKET WATCH - 1902 - 17j - 16s**

ELGIN POCKET WATCH - 1902 - 17j - 16s; Grade = 242; Size = 16s; Jewels = 17j; Mvmt Config = Hunting; Mvmt Set = Pendant; Adj = Y; Serial# 9350784; Addt'l Notes = Adjusted to Temperature. 3-Finger straight bridge plate. 2.9 oz w/movement.

**30 HAMPDEN POCKET WATCH - 1912 - 17j - 16s**

HAMPDEN POCKET WATCH - 1912 - 17j - 16s; Grade = Wm. McKinley; Size = 16s; Jewels = 17j; Mvmt Config = Openface; Mvmt Set = Pendant; Adj = Y; Serial# 3023923; Addt'l Notes = Bridge plate. "Wm. McKinley" marking on the movement. Some damage on the dial. 3.1 oz w/movement.

**27 ELGIN POCKET WATCH - 1925 - 21j - 16s**

ELGIN POCKET WATCH - 1925 - 21j - 16s; Grade = B.W. Raymond; Size = 16s; Jewels = 21j; Mvmt Config = Openface; Mvmt Set = Lever; Adj = Y; Serial# 28028793; Addt'l Notes = Railroad Grade. Adjusted to 5 Positions. Slight discoloration on the hands. 2.9 oz w/movement.

**31 INGERSOLL RELIANCE POCKET WATCH - 7j - 16s**

INGERSOLL RELIANCE POCKET WATCH - 1895-1900 - 7j - 16s; Grade = n/a; Size = 16s; Jewels = 7j; Mvmt Config = Openface; Mvmt Set = Pendant; Adj = n/a; Serial# 873174; Addt'l Notes = Does not run. Missing crystal. Heavy damage to the dial. "Robt. H. Ingersoll & Bro." marking on the movement. 2.3 oz w/movement.



**Pocket Watch Auction (online-only) 8/18/2020-9/1/2020****LOT #****32 LACKAWANNA POCKET WATCH - 17j - 16s**

LACKAWANNA POCKET WATCH - 17j - 16s; Grade = n/a; Size = 16s; Jewels = 17j; Mvmt Config = Openface; Mvmt Set = Pendant; Adj = n/a; Serial# 229680; Addt'l Notes = Does not run/wind. Embossed (high relief) locomotive on back case. 3.4 oz w/movement.

**33 NATIONAL WATCH CO - CHAUX-DE-FONDS - 18K - 16s**

NATIONAL WATCH CO - CHAUX-DE-FONDS - 18K - 16s; Grade = n/a; Size = 16s; Jewels = n/a; Mvmt Config = Openface; Mvmt Set = Pendant; Adj = n/a; Serial# n/a; Addt'l Notes = 18K marking on the inside cover. National Watch Co, Chaux-De-Fonds marking on the dust cover and dial. Several dents on the soft metal case. Bridge plate. 2.2 oz w/movement.

**34 NEW YORK STD POCKET WATCH - 7j - 16s**

NEW YORK STD POCKET WATCH - 1885-1929 - 7j - 16s; Grade = n/a; Size = 16s; Jewels = 7j; Mvmt Config = Openface; Mvmt Set = Pendant; Adj = N; Serial# GCO24728; Addt'l Notes = Unfamiliar with the s/n. It runs for a short time and then stops. Needs clean/oil. Consider this not in running condition. 2.9 oz w/movement.

**35 ROCKFORD POCKET WATCH - 1891 - 17j - 16s**

ROCKFORD POCKET WATCH - 1891 - 17j - 16s; Grade = 100; Size = 16s; Jewels = 17j; Mvmt Config = Hunting; Mvmt Set = Lever; Adj = Y; Serial# 384411; Addt'l Notes = Pendant wind/Lever set. Two-tone finish. Plastic crystal has some blemishes/wear. 4.5 oz w/movement.

**LOT #****36 ROCKFORD POCKET WATCH - 1908 - 15j - 16s**

ROCKFORD POCKET WATCH - 1908 - 15j - 16s; Grade = 587; Size = 16s; Jewels = 15j; Mvmt Config = Openface; Mvmt Set = Pendant; Adj = N; Serial# 751518; Addt'l Notes = We were unable to set the time. Movement flips up. Several cracks on the dial. Case shows wear. 3.4 oz w/movement.

**37 UNKNOWN POCKET WATCH - SILVER - 16s**

UNKNOWN POCKET WATCH - SILVER - 16s; Grade = n/a; Size = 16s; Jewels = n/a; Mvmt Config = Openface; Mvmt Set = Key; Adj = n/a; Serial# n/a; Addt'l Notes = Does not wind. Does not run. Beautiful case & fancy silver dial. Hallmarks on the case include a lion passant or walking lion, initial "C" in a shield, a animal face in a shield and the sponsor's initials "W.H.". There are no markings on the movement. 4.8 oz w/movement.

**38 WALTHAM POCKET WATCH - 1901 - 17j - 16s**

WALTHAM POCKET WATCH - 1901 - 17j - 16s; Grade = Riverside; Size = 16s; Jewels = 17j; Mvmt Config = Openface; Mvmt Set = Lever; Adj = Y; Serial# 10513164; Addt'l Notes = Crack on the dial. Majestic case. Adjusted to Position. Bridge plate. 3.0 pz w/movement.

**39 WALTHAM POCKET WATCH - STERLING - 7j - 16s**

WALTHAM POCKET WATCH - STERLING - 1904 - 7j - 16s; Grade = 610; Size = 16s; Jewels = 7j; Mvmt Config = Hunting; Mvmt Set = Pendant; Adj = N; Serial# 13554276; Addt'l Notes = Sterling case. Winds but does not run. 3.9 oz w/movement.



## Pocket Watch Auction (online-only) 8/18/2020-9/1/2020

**LOT #****40 WATERBURY CHARLES BENEDICT POCKET WATCH**

WATERBURY CHARLES BENEDICT  
POCKET WATCH - 1879-1898 - 16s; Grade =  
Series K; Size = 16s; Jewels = n/a; Mvmt  
Config = Openface; Mvmt Set = ; Adj = N;  
Serial# n/a; Addt'l Notes = Series K. Waterbury  
Watch Company. 3/4 plate. Pendant wind. Runs  
well. 3.7 oz w/movement.

**LOT #****44 COLUMBUS POCKET WATCH - 1892 - 11j or 15j - 18s**

COLUMBUS POCKET WATCH - 1892 - 11j  
or 15j - 18s; Grade = North Star; Size = 18s;  
Jewels = 11j or 15j; Mvmt Config = Openface;  
Mvmt Set = Pendant; Adj = n/a; Serial#  
241907; Addt'l Notes = Needs cleaning, runs for  
a short time, then stops. Pendant wind/set. Full  
plate. 5.1 oz w/movement.

**41 AURORA POCKET WATCH - 1886 - 15j - 18s**

AURORA POCKET WATCH - 1886 - 15j -  
18s; Grade = n/a; Size = 18s; Jewels = 15j;  
Mvmt Config = Hunting; Mvmt Set = Lever;  
Adj = n/a; Serial# 93343; Addt'l Notes =  
Pendant wind, Lever Set. 4.3 oz w/movement.

**45 COLUMBUS POCKET WATCH - 1902 - 15j - 18s**

COLUMBUS POCKET WATCH - 1902 - 15j -  
18s; Grade = n/a; Size = 18s; Jewels = 15j;  
Mvmt Config = Openface; Mvmt Set = Lever;  
Adj = N; Serial# 383625; Addt'l Notes = Does  
not run. Cracks and chips on the dial. Missing  
hour hand. Raised crystal. 5.8 oz w/movement.

**42 CALIFORNIA POCKET WATCH - SILVER - 18s**

CALIFORNIA POCKET WATCH - SILVER -  
1876-77 - 18s; Grade = n/a; Size = 18s; Jewels  
= n/a; Mvmt Config = Either; Mvmt Set = Key;  
Adj = n/a; Serial# n/a; Addt'l Notes = LFB Fine  
Silver hallmark inside case. "California Watch"  
engraved on dust cover. Plastic case. Key  
wind/set. Very few California watches were  
made. Includes key. 4.4 oz w/movement.

**46 ELGIN POCKET WATCH - 1869 - 7j - 18s**

ELGIN POCKET WATCH - 1869 - 7j - 18s;  
Grade = J.T. Ryerson; Size = 18s; Jewels = 7j;  
Mvmt Config = Either; Mvmt Set = Key; Adj =  
N; Serial# 27471; Addt'l Notes = Nice ornate  
Coin Silver case with an intital on the back.  
Key wind/set. Key not included. 5.4 oz  
w/movement.

**43 COLUMBUS POCKET WATCH - 1884 - 15j - 18s**

COLUMBUS POCKET WATCH - 1884 - 15j -  
18s; Grade = J.P. Stevens; Size = 18s; Jewels =  
15j; Mvmt Config = Hunting; Mvmt Set =  
Lever; Adj = Y; Serial# 34948; Addt'l Notes =  
Fahys No.1 Coin Silver case. Private label "J.P.  
Stevens, New Model, Atlanta GA" on the dial  
and the movement. Pendant wind/Lever set. 5.4  
oz w/movement.

**47 ELGIN POCKET WATCH - 1871 - 15j - 18s**

ELGIN POCKET WATCH - 1871 - 15j - 18s;  
Grade = H.H. Taylor; Size = 18s; Jewels = 15j;  
Mvmt Config = Either; Mvmt Set = Key; Adj =  
N; Serial# 143068; Addt'l Notes = Railroad  
Grade. Needs cleaning, runs for a short time,  
then stops. No key. 5.2 oz w/movement.



**Pocket Watch Auction (online-only) 8/18/2020-9/1/2020****LOT #****48 ELGIN POCKET WATCH - 1888 - 11j - 18s**

ELGIN POCKET WATCH - 1888 - 11j - 18s;  
Grade = 10; Size = 18s; Jewels = 11j; Mvmt  
Config = Hunting; Mvmt Set = Lever; Adj = N;  
Serial# 2605252; Addt'l Notes = Stem pulls out.  
Crystal has a scratch and dial has crack.  
Locomotive engraved on back. 4.6 oz  
w/movement.

**49 ELGIN POCKET WATCH - 1894 - 15j - 18s**

ELGIN POCKET WATCH - 1894 - 15j - 18s;  
Grade = B.W. Raymond; Size = 18s; Jewels =  
15j; Mvmt Config = Hunting; Mvmt Set =  
Lever; Adj = Y; Serial# 5414997; Addt'l Notes  
= Coin Silver case. Railroad Grade. Adjusted to  
Position, Temperature and Isochronism. Full  
plate with nickel finish. 4.0 oz w/movement.

**50 ELGIN POCKET WATCH - 1900 - 21j - 18s**

ELGIN POCKET WATCH - 1900 - 21j - 18s;  
Grade = Veritas; Size = 18s; Jewels = 21j;  
Mvmt Config = Openface; Mvmt Set = Lever;  
Adj = Y; Serial# 8575776; Addt'l Notes =  
Hands have a blue tint. Ruby Jewels. Gold  
raised (Screw-Set) settings. Motor Barrel.  
Double Roller. Balance Jewel Material:  
Diamond. Train and Center Wheel Material:  
Gold. Pallet Jewel Material: Sapphire.  
Traveling Nut (spring) Regulator. Adjusted to 5  
Positions, Temperature & Isochronism. Railroad  
Grade. Pendant wind/Lever set. 4.1 oz  
w/movement.

**51 ELGIN POCKET WATCH - 1908 - 7j - 18s**

ELGIN POCKET WATCH - 1908 - 7j - 18s;  
Grade = 309; Size = 18s; Jewels = 7j; Mvmt  
Config = Hunting; Mvmt Set = Pendant; Adj =  
N; Serial# 13312203; Addt'l Notes = J.Boss  
gold filled case. Clean full plate movement. 4.1  
oz w/movement.

**LOT #****52 ELGIN POCKET WATCH - 1913 - 17j - 18s**

ELGIN POCKET WATCH - 1913 - 17j - 18s;  
Grade = 336; Size = 18s; Jewels = 17j; Mvmt  
Config = Openface; Mvmt Set = Pendant; Adj =  
N; Serial# 17265288; Addt'l Notes = Full plate.  
4.0 oz w/movement.

**53 HAMILTON POCKET WATCH - 1903 - 21j - 18s**

HAMILTON POCKET WATCH - 1903 - 21j -  
18s; Grade = 940; Size = 18s; Jewels = 21j;  
Mvmt Config = Openface; Mvmt Set = Lever;  
Adj = Y; Serial# 296269; Addt'l Notes = J.Boss  
14K gold filled case. Yoke is missing.  
Damaskened movement. Adjusted to 5  
Positions, Temperature & Isochronism. Railroad  
Grade. 4.2 oz w/movement.

**54 HAMPDEN POCKET WATCH - 1880 - 11j - 18s**

HAMPDEN POCKET WATCH - 1880 - 11j -  
18s; Grade = Hayward; Size = 18s; Jewels =  
11j; Mvmt Config = Either; Mvmt Set = Key;  
Adj = N; Serial# 175542; Addt'l Notes = Coin  
Silver case. Key set/wind. Key not included.  
Clean, raised crystal. Blemishes on case cover.  
5.6 oz w/movement.

**55 HAMPDEN POCKET WATCH - 1891 - 15j - 18s**

HAMPDEN POCKET WATCH - 1891 - 15j -  
18s; Grade = John C. Dueber; Size = 18s;  
Jewels = 15j; Mvmt Config = Hunting; Mvmt  
Set = Lever; Adj = Y; Serial# 671711; Addt'l  
Notes = Railroad Grade. Beautiful ornate case.  
Private label "R.C. Eldridge" on the dial.  
"Alphonse Winkel" engraved on inside cover.  
"John C. Dueber" on the movement. Pendant  
wind/Lever set. Adjusted to Temp. 4.8 oz  
w/movement.



**Pocket Watch Auction (online-only) 8/18/2020-9/1/2020****LOT #****56 HAMPDEN POCKET WATCH - 1904 - 17j - 18s**

HAMPDEN POCKET WATCH - 1904 - 17j - 18s; Grade = Menlo Park; Size = 18s; Jewels = 17j; Mvmt Config = Hunting; Mvmt Set = Lever; Adj = Y; Serial# 1991606; Addt'l Notes = Does not run. Crystal is not attached. Pendant wind. Dueber Special case. Dust cover has initials engraved with date 2-21-07. 4.4 oz w/movement.

**57 ILLINOIS POCKET WATCH - 1881 - 11j - 18s**

ILLINOIS POCKET WATCH - 1881 - 11j - 18s; Grade = Dauntless; Size = 18s; Jewels = 11j; Mvmt Config = Hunting; Mvmt Set = Lever; Adj = N; Serial# 199365; Addt'l Notes = Coin Silver case. Pendant wind/Lever set. Minor fractures on the dial. 6.3 oz w/movement.

**58 ILLINOIS POCKET WATCH - 1882 - 11j or 13j - 18s**

ILLINOIS POCKET WATCH - 1882 - 11j or 13j - 18s; Grade = Currier; Size = 18s; Jewels = 11j or 13j; Mvmt Config = Hunting; Mvmt Set = Lever; Adj = N; Serial# 313877; Addt'l Notes = Pendant wind, Lever Set. Full plate. Small cracks on bottom of dial. 4.1 oz w/movement.

**59 ILLINOIS POCKET WATCH - 1900 - 21j - 18s**

ILLINOIS POCKET WATCH - 1900 - 21j - 18s; Grade = Bunn Special; Size = 18s; Jewels = 21j; Mvmt Config = Openface; Mvmt Set = Lever; Adj = Y; Serial# 1536146; Addt'l Notes = Pendant wind/Lever set. "21 Ruby Jewels" and "Bunn Special" markings on the movement. Two-tone movement finish. 4.3 oz w/movement.

**LOT #****60 ILLINOIS POCKET WATCH - 1916 - 17j - 18s**

ILLINOIS POCKET WATCH - 1916 - 17j - 18s; Grade = 69; Size = 18s; Jewels = 17j; Mvmt Config = Openface; Mvmt Set = Lever; Adj = N; Serial# 2877613; Addt'l Notes = Pendant wind/Lever set. Full plate. Some blemishes on back case. Dial has a small chip next to the three. 5.7 oz w/movement.

**61 LANCASTER POCKET WATCH - 1886 - 18s**

LANCASTER POCKET WATCH - 1886 - 18s; Grade = n/a; Size = 18s; Jewels = n/a; Mvmt Config = Either; Mvmt Set = Lever; Adj = N; Serial# 416083; Addt'l Notes = Full case. Pendant wind/Lever set. A few dents on dust cover. Clean dial w/ plastic crystal. 4.4 oz w/movement.

**62 NEW YORK STD POCKET WATCH - 18s**

NEW YORK STD POCKET WATCH - 1885-1929 - 18s; Grade = n/a; Size = 18s; Jewels = n/a; Mvmt Config = Openface; Mvmt Set = Lever; Adj = n/a; Serial# 94052; Addt'l Notes = Very interesting plate/movement. Pendant wind/Lever set. Ran for a short time, then stopped. It may just need a little oil and to be run. 5.1 oz w/movement.

**63 OMEGA POCKET WATCH - SILVER - 1915 - 18s**

OMEGA POCKET WATCH - SILVER - 1915 - 18s; Grade = n/a; Size = 18s; Jewels = n/a; Mvmt Config = Openface; Mvmt Set = Pendant; Adj = n/a; Serial# 4973351; Addt'l Notes = 0.800 Silver Omega Case. The watch runs, but the minute hand is loose under the crystal. It will need reattached. 4.3 pz w/movement.





## Pocket Watch Auction (online-only) 8/18/2020-9/1/2020

**LOT #****64 ROCKFORD POCKET WATCH - 1876 - 11j - 18s**

ROCKFORD POCKET WATCH - 1876 - 11j - 18s; Grade = n/a; Size = 18s; Jewels = 11j; Mvmt Config = Hunting; Mvmt Set = Key; Adj = n/a; Serial# 22653; Addt'l Notes = Coin Silver case. Dial & crystal in good condition. Key set/wind. Does not include key. 6.2 oz w/movement.

**65 ROCKFORD POCKET WATCH - 1883 - 18s**

ROCKFORD POCKET WATCH - 1883 - 18s; Grade = n/a; Size = 18s; Jewels = n/a; Mvmt Config = Hunting; Mvmt Set = Key; Adj = n/a; Serial# 168791; Addt'l Notes = Gold filled case. Full plate. Key wind/set. Key not included. Name "J.Rees" is engraved on the cover. 5.5 oz w/movement.

**66 ROCKFORD POCKET WATCH - 1889 - 11j - 18s**

ROCKFORD POCKET WATCH - 1889 - 11j - 18s; Grade = 68; Size = 18s; Jewels = 11j; Mvmt Config = Hunting; Mvmt Set = Lever; Adj = N; Serial# 331161; Addt'l Notes = Does not wind. Does not run. 5.6 oz w/movement.

**67 ROCKFORD POCKET WATCH - 1900 - 17j - 18s**

ROCKFORD POCKET WATCH - 1900 - 17j - 18s; Grade = 835; Size = 18s; Jewels = 17j; Mvmt Config = Hunting; Mvmt Set = Lever; Adj = n/a; Serial# 561932; Addt'l Notes = Full case. Pendant wind/Lever set. Full plate. Some wear evident on case. 5.1 oz w/movement.

**LOT #****68 SETH THOMAS POCKET WATCH - 7j - 18s**

SETH THOMAS POCKET WATCH - 1888-1900 - 7j - 18s; Grade = 34; Size = 18s; Jewels = 7j; Mvmt Config = Hunting; Mvmt Set = Lever; Adj = N; Serial# 72580; Addt'l Notes = Model 2. Full case. 3/4 plate. 4.7 oz w/movement.

**69 SETH THOMAS POCKET WATCH - 1909 - 7j - 18s**

SETH THOMAS POCKET WATCH - 1909 - 7j - 18s; Grade = 36; Size = 18s; Jewels = 7j; Mvmt Config = Openface; Mvmt Set = Pendant; Adj = N; Serial# 2547131; Addt'l Notes = Model 8. Known as the New Eagle Series. 5.3 oz w/movement.

**70 WALTHAM POCKET WATCH - 1859 - 7j - 18s**

WALTHAM POCKET WATCH - 1859 - 7j - 18s; Grade = P.S. Bartlett; Size = 18s; Jewels = 7j; Mvmt Config = Either; Mvmt Set = Key; Adj = Y; Serial# 15996; Addt'l Notes = Includes key. Adjusted to Position. Full case. Dial marking "Appleton, Tracy & Co". Inside case markings "S.H.H.P." 5.8 oz w/movement.

**71 WALTHAM POCKET WATCH - 1864 - 7j - 18s**

WALTHAM POCKET WATCH - 1864 - 7j - 18s; Grade = P.S. Bartlett; Size = 18s; Jewels = 7j; Mvmt Config = Either; Mvmt Set = Key; Adj = Y; Serial# 131458; Addt'l Notes = Needs cleaning, runs for a short time, then stops. Consider does not run. Fully wound. No key. "S. Daco" stamped on inside cover lid and Eagle inside back lid. Sterling? 4.4 oz w/movement.



**Pocket Watch Auction (online-only) 8/18/2020-9/1/2020****LOT #****72 WALTHAM POCKET WATCH - 1866 - 11j - 18s**

WALTHAM POCKET WATCH - 1866 - 11j - 18s; Grade = Wm. Ellery; Size = 18s; Jewels = 11j; Mvmt Config = Either; Mvmt Set = Key; Adj = Y; Serial# 244390; Addt'l Notes = Heavy wear on the case. Key wind/set. Key not included. 5.1 oz w/movement.

**LOT #****76 WALTHAM POCKET WATCH - 1875 - 7j - 18s**

WALTHAM POCKET WATCH - 1875 - 7j - 18s; Grade = Home Watch Co; Size = 18s; Jewels = 7j; Mvmt Config = Either; Mvmt Set = Key; Adj = Y; Serial# 822203; Addt'l Notes = Coin Silver case. Key wind/set. Key included. Full plate. 7.1 oz w/movement.

**73 WALTHAM POCKET WATCH - 1871 - 15j - 18s**

WALTHAM POCKET WATCH - 1871 - 15j - 18s; Grade = Appleton, Tracy & Co.; Size = 18s; Jewels = 15j; Mvmt Config = Hunting; Mvmt Set = Key; Adj = Y; Serial# 499337; Addt'l Notes = Key set/key wind. Very nice key is included. "GWL" initials inside cover. Very nice ornate case. Adjusted to Position. 4.4 oz w/movement

**77 WALTHAM POCKET WATCH - 1887 - 15j - 18s**

WALTHAM POCKET WATCH - 1887 - 15j - 18s; Grade = 25; Size = 18s; Jewels = 15j; Mvmt Config = Openface; Mvmt Set = Pendant; Adj = Y; Serial# 3363485; Addt'l Notes = Adjusted 3 Positions and to Temperature and Isochronism. Leader Coin Silver case. Raised crystal. Full plate. 5.4 oz w/movement.

**74 WALTHAM POCKET WATCH - 1871 - 11j - 18s**

WALTHAM POCKET WATCH - 1871 - 11j - 18s; Grade = P.S. Bartlett; Size = 18s; Jewels = 11j; Mvmt Config = Either; Mvmt Set = Key; Adj = Y; Serial# 536853; Addt'l Notes = Coin Silver case. Key wind/set. Key included. Full plate. Dial & crystal in very good condition. 7.4 oz w/movement.

**78 WALTHAM POCKET WATCH - 1891 - 15j - 18s**

WALTHAM POCKET WATCH - 1891 - 15j - 18s; Grade = Appleton, Tracy & Co.; Size = 18s; Jewels = 15j; Mvmt Config = Hunting; Mvmt Set = Lever; Adj = Y; Serial# 4528107; Addt'l Notes = Large viewing window on back cover displaying the damaskeened movement. Both crystals are plastic. Adjusted to Position.

**75 WALTHAM POCKET WATCH - 1872 - 11j - 18s**

WALTHAM POCKET WATCH - 1872 - 11j - 18s; Grade = Wm. Ellery; Size = 18s; Jewels = 11j; Mvmt Config = Either; Mvmt Set = Key; Adj = Y; Serial# 603280; Addt'l Notes = Raised crystal case. Scratches near the lid seam. Key wind/set. Includes the key. 5.6 oz w/movement.

**79 WALTHAM POCKET WATCH - 1900 - 17j - 18s**

WALTHAM POCKET WATCH - 1900 - 17j - 18s; Grade = Appleton, Tracy & Co.; Size = 18s; Jewels = 17j; Mvmt Config = Openface; Mvmt Set = Lever; Adj = Y; Serial# 10032272; Addt'l Notes = Pendant wind, Lever set. Adjusted to Position. Very nice movement. 4.5 oz w/movement.



Pocket Watch Auction (online-only) 8/18/2020-9/1/2020

**LOT #**

**80 WALTHAM POCKET WATCH - 1908 - 17j - 18s**

WALTHAM POCKET WATCH - 1908 - 17j - 18s; Grade = 625; Size = 18s; Jewels = 17j; Mvmt Config = Openface; Mvmt Set = Pendant; Adj = N; Serial# 16923637; Addt'l Notes = Large initials engraved on back cover. 3/4 plate. Flip out movement. Clean dial and crystal. 3.7 oz w/movement.



**81 CROTON NIVADA GRENCHEM ANTARTIC WATCH**

CROTON NIVADA GRENCHEM ANTARTIC WATCH; Addt'l Notes = Croton Nivada Grenchen Antarctic Wrist Watch. Speidel band. Runs. Various scratches on crystal. Case# 61L33024.



**82 GRUEN CURVEX WRIST WATCH**

GRUEN CURVEX WRIST WATCH; Addt'l Notes = Crystal has a crack. Ran for a short time and stopped. 10K gold filled.



**83 ILLINOIS WRIST WATCH - STERLING - 1906 - 17j - 0s**

ILLINOIS WRIST WATCH - STERLING - 1906 - 17j - 0s; Grade = 37; Size = 0s; Jewels = 17j; Mvmt Config = Hunting; Mvmt Set = Pendant; Adj = N; Serial# 1868592; Addt'l Notes = Sterling case. 0s watch with a wrist watch case. Local connections = Jeweler "Carl Oesterle, Joliet IL" marking on the movement. Back case engraved "Good Luck to Cassius A. Mills from G.B. Employees, Joliet Ill, Aug 17, 1918." The G.B. business might be Gerlach-Barklow? 0.8 oz w/movement.



**LOT #**

**84 LONGINES WRIST WATCH**

LONGINES WRIST WATCH; Addt'l Notes = 10K gold filled case. Does not run.



**85 OMEGA AUTOMATIC WRIST WATCH**

OMEGA AUTOMATIC WRIST WATCH; Addt'l Notes = 14K gold filled. Band not included. Runs.



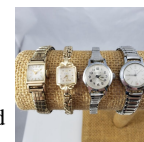
**86 SEIKO WRIST WATCHES**

SEIKO WRIST WATCHES; Addt'l Notes = Pair of Seiko watches. The 360 Datomatic functions, 25 jewels. The Electra runs too but is missing the outer rings and crystal.



**87 4 WOMENS WRIST WATCHES**

4 WOMENS WRIST WATCHES; Addt'l Notes = Includes: Wittnauer 10K gold filled, Elgin DeLuxe 10K gold filled, Westclox 17 jewel and Elgin Durapower. The Wittnauer was the only watch not in working condition at time of inspection. The Wittnauer had an engraving on the back case "Bessie Tripp in appreciation of loyal service. The Formfit Company, June 30, 1952".



**88 3 WRIST WATCHES - NOT RUNNING**

3 WRIST WATCHES DO NOT RUN; Addt'l Notes = Does not run. Includes: Orvin 21 jewel, LeCoultre 10K gold filled with Lizard band and Bulova Accutron 14K gold filled.



**Pocket Watch Auction (online-only) 8/18/2020-9/1/2020****LOT #****89 3 WRIST WATCHES - NOT RUNNING**

3 WRIST WATCHES DO NOT RUN; Addt'l Notes = Does not run. Includes: Woldman Electra, Jules Jurgensen with Day/Date/Moon Phase and Benrus pocket watches.

**LOT #****94 WESTCLOX CLOCK**

WESTCLOX CLOCK; Addt'l Notes = Adjustable hinge. It ran for a short time and then stopped. Consider "does not run" condition. It was fully wound at inspection.

**90 ELGIN TRAVEL CLOCK/RADIO - 1980**

ELGIN TRAVEL CLOCK/RADIO - 1980; Addt'l Notes = Elgin Model# 8411LES8. Leather case. Battery connection has corrosion. Condition unknown. Selling as-is. Manufactured date January 22, 1980.

**95 BULOVA WATCH CASE**

BULOVA WATCH CASE; Addt'l Notes = 3-1/2" W x 5" L x 1-1/4" H.

**91 FLORN TRAVEL WATCH**

FLORN TRAVEL WATCH; Addt'l Notes = West Germany. Illuminated hands. Plastic crystal has a crack. Runs and Alarm works.

**92 MOVADO ERMETO TRAVEL CLOCK**

MOVADO ERMETO TRAVEL CLOCK501146; Addt'l Notes = We could set the time, but would not wind. Does not run, as-is. Metal eye on one bottom corner for watch chain. Built-in nightstand prop on the rear of its case. 17 jewel. Swiss Made. Stainless Steel case? 3.3 oz.

**93 WALTHAM TRAVELER WATCH - 1916 - 7j - 16s**

WALTHAM TRAVELER WATCH - 1916 - 7j - 16s; Grade = Traveler; Size = 16s; Jewels = 7j; Mvmt Config = Openface; Mvmt Set = Pendant; Adj = N; Serial# 20893937; Addt'l Notes = Case measures 3-1/2" x 4". The watch has torn away from the leather. Watch lays loose in the case. Runs.

