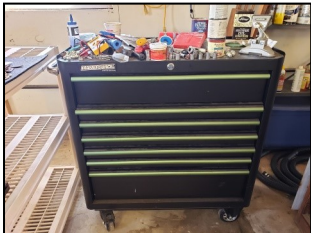


# PUBLIC ESTATE AUCTION

**Sunday, August 23, 2020 at 9:00 AM**

**Location: 116 Canal St, Lisbon, IL 60541**  
**Directions: Located on Lisbon Rd (Canal St) in downtown Lisbon.**



**Van:**  
 2008 Chrysler Town & Country Van—  
 Touring Signature Series, V6, FWD, Seats  
 7, Leather Stow 'n Go Seats, Auto, 95k mi,  
 DVD, VIN# 2A8HR54P68R822342.

**Antiques & Vintage Items:**  
 Local Advertising Pieces;  
 Dick Tracy Cap Gun; Misc Cap Guns;  
 Lead Military Figures; Lighters;  
**Tom Thumb** Cash Register & Typewriter;  
 Vintage Children Toys;  
 Diecast Trucks, new-in-box;  
**Hubley** Cast Toys; Car Models & Toys;  
 Poosh-M-Up Big 5 Pinball Game;  
**Sunbeam Original Embossed Bread Push  
 Bar & Grocery Store Screen Door;**  
 Campbell's Soup Display;  
 Kitchen Canisters/Spice Tins;  
 Pyrex Mixing Bowls;  
 Vintage Stoneware Water Dispenser;  
 Vintage Kitchen Sm Appliances;  
 Several Pieces of **Shawnee** Pottery;  
 Several Pieces of **Fiestaware**;  
 Wooden Milk Box; Coca-Cola Items;  
 Vintage Cameras; Vintage Glassware;  
 American Flyer Prewar **O-Scale** Tin Litho 3  
 Oriental Limited Train Set in orig box;  
 Williams Pennsylvania O-Scale Elec Train;  
 Misc Elec Trains, various sizes & models;  
 1940's Washing-Lubrication-Parking  
 and Keystone Service Station Toys;  
 Train Model Accessories;  
 Various Vintage Radios and Record Players;  
 Zenith Floor Model Radio;  
 Webcor Vintage Record Player;  
 RCA Victor Radio; 45 Records;  
 Atwater Kent Model E Speaker;  
 Silvertone Radio; Philco Radio;  
 Victrola; Radio Parts;  
 Raytheon Tube Caddy Case;  
 Some Jewelry; Mens/Womens Rings;

**Over 150 Zenith, GE, Sylvania  
 Electronic Tubes;**  
 Mid-Century Radio Table;  
 US Army Frequency Meter BC-221-M;  
 Coleman Lanterns;  
 Pair of Schlitz Lights;  
 Antique Stomberg-Carlson Telephone;  
 Antique Waterbury Mantle Clock;  
 United & Seth Thomas Mantle Clocks;  
 Cuckoo Clock, white;  
 C.M. Bardwell School 1948 Cookbook;  
 Model Planes, as-is;  
 Vintage Step-Ladders;  
 Vintage Kitchen Step-Stool/Chair;  
 (2) Lady Mannequins;  
 Printer's H.B. Rouse Lead Type Bevel  
 Miter Cutter;  
**Everhot Purina Poultry Chows Electric  
 Clock & Timer;**  
 Neon Lights: Miller Genuine Draft Light,  
 Bitcoin, Miller Light;  
 Lorus Quartz Watch Rotating Display;  
 Vintage Fire Hose;  
 LC Smith & Corona Typewriter 8 10;  
 Brass Fire Extinguishers;  
 Vintage Natural Light Sign;  
 Art Deco Lamps;  
 Vintage Floor Lamps;  
 Bell Clock Co Quartz Ship's Clock;  
 Vintage Insurance Company Signs;  
 Antique Sundstrand Speed Cash Register  
 Drawer;  
 National Cash Register;  
 Schwinn Tandem Bicycle;  
**Bicycles & Many, Many Bike Parts &  
 Accessories;**  
 Vintage Electric Fireplace;  
 Laundry Drying Rack – umbrella style;  
 Vintage Rocking Horse, spring mechanism;  
 Atwater Kent Gasoline Gauge;  
 Typewriter Ribbon Tin Collection;  
 Laundry Cart;  
**1953 Buick Parts.**

**Eight Glass Showcases:**  
 (3) 8' x 26" with oak trim  
 (1) 8' x 20", (2) 5' x 22", (2) 4' x 22"

**Furniture and Household:**  
 Bass Drum Coffee Table;  
**Hoosier Cabinet** in Ex Cond;  
 Small Hutch, glass sliding doors;  
 Small Hutch with Bubble Glass;  
 Upright Oak Display Cabinet;  
 Vintage Kitchen Cabinets;  
**Mahogany Dining Table & Chairs;**  
 Oak Dropleaf Table;  
 Entire Kitchen full of pots/pans/utensils;  
**Ice Cream Parlor Table & 4 Chairs,**  
 wood top;  
 Antique Wardrobe;  
 Antique 4-Drawer Oak Dresser;  
 Antique Oak Bed Head/Foot Boards;  
 Hope Chest;  
 5-Drawer Dresser;  
 Vintage Chairs & End Tables;  
 Knee-Hole Desk, nice shape;  
 Large Vintage Wood Desk;  
 (3) 4-Drawer Letter File Cabinets;  
 10' Wooden Bar Top;  
 Antique Sofa & Cane Side/Back Rocker;  
 Recliner & Footstool;  
 Vinyl Sofa;  
 Several Flatscreen TVs;  
 Area Rugs;  
 Banister Bookshelf;  
 Several Bookshelves;  
 Glass Curio Cabinet;  
 Polly Chase numbered Safari Prints;  
 Salt & Pepper Collection;  
 Stereo Equip, some vintage.

**Tools & Garage Items:**  
 Troy-Bilt Bronco Riding Mower, 42" Deck,  
 17HP, #13WV78KS011;  
**Masterforce 7 Drawer Tool Chest,**  
 like new;  
 Large Collection of Hand Tools including:  
 Ratchets; Pliers; Sockets; Wrenches & more  
**Stihl** Power Trimmer;  
 Remington Electric Chainsaw;  
 Craftsman Band Saw;  
 Craftsman Table Saw;  
 McCulloch Chop Saw;  
 Vintage Shoppersmith;  
 Extension Ladder;  
 Schauer Battery Charger;  
 Large Bench Vice;  
 Wood Turning Chisels;  
 Wood Planes;  
 Sentinel Gun Cabinets w/keys;  
 Vintage Generator;  
 Vintage Evrinate Outboard;  
**John Deere Hit and Miss Engine,** Type E,  
 1.5HP, 600RPM, Ser#286201.

This is a partial list of items! Most of the auction to be held outdoors. Phase 4 Restore IL Guidelines may be in order. Face Coverings & Social Distancing encouraged.



**Owner: Estate of William "Bill" Fielder**

**Richard A. Olson & Associates, Inc**  
 531 W Bedford Rd, Morris IL 60450

**Richard A. Olson** IL License #440.000585  
 815-942-4266 (o) 815-258-3003 (c)  
**Erik C. Olson** IL License #441.001909  
 815-942-4266 (o) 815-931-0699 (c)



**Terms:** Cash or good check with proper ID on day of sale. Nothing removed until settled. All items are being sold as is with no stated or implied warranty. Sale day announcements take precedence over printed material. Buyers are responsible for all items after sold. This is a **LIVE** auction, must be present to bid. **NO BUYERS PREMIUM!**

**OVER 200 PHOTOS ON WEBSITE!**

[www.richardaolson.com](http://www.richardaolson.com)

