

Pocket Watch Auction (online-only) 7/2/2020-7/21/2020

LOT #

1 WALTHAM POCKET WATCH - 14K - 1913 - 15j - 6/0s

WALTHAM POCKET WATCH - 14K - 1913 - 15j - 6/0s; Grade = Sapphire; Size = 6/0s; Jewels = 15j; Mvmt Config = Openface; Mvmt Set = Pendant; Adj = Y; Serial# 19032448; Addt'l Notes = 14K Fine 585/1000 Keystone "Jewel" case. Large initials engraved on back. 3/4 Split Nickel Plate. 0.6 oz w/movement.
Quantity: 1



2 UNKNOWN POCKET WATCH - 6/0s

UNKNOWN POCKET WATCH - 6/0s; Grade = n/a; Size = 6/0s; Jewels = n/a; Mvmt Config = Openface; Mvmt Set = Pin; Adj = n/a; Serial# n/a; Addt'l Notes = Small Pin set watch. Bridge plate. Pendant wind/Pin set. Fully wound when we received. See marking signature inside case. 1.2 oz w/movement.
Quantity: 1



3 WALTHAM POCKET WATCH - 1899 - 7j - 3/0s

WALTHAM POCKET WATCH - 1899 - 7j - 3/0s; Grade = 60; Size = 3/0s; Jewels = 7j; Mvmt Config = Hunting; Mvmt Set = Pendant; Adj = N; Serial# 6881754; Addt'l Notes = Full case. Pendant wind/set. 1.2 oz w/movement.
Quantity: 1



4 ELGIN PENDANT WATCH - 1910 - 7j - 0s

ELGIN PENDANT WATCH - 1910 - 7j - 0s; Grade = 320; Size = 0s; Jewels = 7j; Mvmt Config = Hunting; Mvmt Set = Pendant; Adj = N; Serial# 14974639; Addt'l Notes = Eyelet on the bottom for Pendant use. Double-Roller. 3/4 plate. 1.4 oz w/movement.
Quantity: 1



LOT #

5 ELGIN POCKET WATCH - 1912 - 7j - 0s

ELGIN POCKET WATCH - 1912 - 7j - 0s; Grade = 320; Size = 0s; Jewels = 7j; Mvmt Config = Hunting; Mvmt Set = Pendant; Adj = N; Serial# 16084751; Addt'l Notes = Does not run. Crystal is not set, it's loose. Birds on both sides of case. Pendant wind/set. 1.4 oz w/movement.
Quantity: 1



6 SOUTH BEND POCKET WATCH - 1910 - 7j - 0s

SOUTH BEND POCKET WATCH - 1910 - 7j - 0s; Grade = n/a; Size = 0s; Jewels = 7j; Mvmt Config = Hunting; Mvmt Set = Pendant; Adj = n/a; Serial# 651807; Addt'l Notes = Fancy dial. Crystal is loose and not attached to frame. Feb 2, 1912 engraved on dust cover.
Quantity: 1



7 UNKNOWN POCKET WATCH - SILVER - 0s

UNKNOWN POCKET WATCH - SILVER - 0s; Grade = n/a; Size = 0s; Jewels = n/a; Mvmt Config = Openface; Mvmt Set = Key; Adj = n/a; Serial# n/a; Addt'l Notes = 0.800 silver case and dust cover. Fancy dial. Engraved case. Key wind/Key Set, no key. Bridge plate. 1.5 oz w/movement.
Quantity: 1



8 ELGIN POCKET WATCH - 1900 - 15j - 6s

ELGIN POCKET WATCH - 1900 - 15j - 6s; Grade = 216; Size = 6s; Jewels = 15j; Mvmt Config = Hunting; Mvmt Set = Pendant; Adj = N; Serial# 8615433; Addt'l Notes = Small initials on case cover. Full ornate case. 3/4 plate. Pendant wind/set. 2.0 oz w/movement.
Quantity: 1



Pocket Watch Auction (online-only) 7/2/2020-7/21/2020

LOT #**9 HAMPDEN POCKET WATCH - 1889 - 15j - 6s**

HAMPDEN POCKET WATCH - 1889 - 15j - 6s; Grade = 213; Size = 6s; Jewels = 15j; Mvmt Config = Hunting; Mvmt Set = Lever; Adj = N; Serial# 569189; Addt'l Notes = Fancy dial. Very nice ornate 14K gold filled case. Pendant wind/Lever set. Dueber Watch Co marking on the movement. 2.2 oz w/movement.



Quantity: 1

10 WALTHAM POCKET WATCH - 1901 - 7j - 6s

WALTHAM POCKET WATCH - 1901 - 7j - 6s; Grade = Seaside; Size = 6s; Jewels = 7j; Mvmt Config = Hunting; Mvmt Set = Pendant; Adj = N; Serial# 10336895; Addt'l Notes = Pendant wind/set, but we were unable to set the time. The stem may need to be reset. Full ornate case. 2.1 oz w/movement.



Quantity: 1

11 ELGIN POCKET WATCH - 1903 - 7j - 12s

ELGIN POCKET WATCH - 1903 - 7j - 12s; Grade = 234; Size = 12s; Jewels = 7j; Mvmt Config = Openface; Mvmt Set = Pendant; Adj = N; Serial# 10001557; Addt'l Notes = Dial has blemishes. Clean crystal. Yoke included, but is detached from stem base. 2.2 oz w/movement.



Quantity: 1

12 ELGIN POCKET WATCH - 1912 - 15j - 12s

ELGIN POCKET WATCH - 1912 - 15j - 12s; Grade = 315; Size = 12s; Jewels = 15j; Mvmt Config = Openface; Mvmt Set = Pendant; Adj = N; Serial# 16560134; Addt'l Notes = Octagon case. Large initials engraved on the back. 3/4 plate. Double roller. 2.2 oz w/movement.



Quantity: 1

LOT #**13 ELGIN POCKET WATCH - 1913 - 19j - 12s**

ELGIN POCKET WATCH - 1913 - 19j - 12s; Grade = B.W. Raymond; Size = 12s; Jewels = 19j; Mvmt Config = Openface; Mvmt Set = Pendant; Adj = Y; Serial# 17190195; Addt'l Notes = 10K gold filled case. "Vernon from Helen" engraving inside cover. Adjusted to 5 Positions, Temperature and Isochronism. Other info from pocketwatchdatabase.com include: Jewel Material: Ruby. Jewel Setting: Raised Gold Settings (Screw-Set). Barrel: Jewelled Motor. Train: Quick. Train Material: Gold. Center Wheel Material: Gold. Regulator: Moseley. Hairspring: Breguet. 2.1 oz w/movement.



Quantity: 1

14 GIRARD PERREGAUX SKELETON WATCH - SHELL OIL

GIRARD PERREGAUX SKELETON POCKET WATCH - SHELL OIL - 1939 - 7j - 12s; Grade = n/a; Size = 12s; Jewels = 7j; Mvmt Config = Openface; Mvmt Set = Pendant; Adj = N; Serial# n/a; Addt'l Notes = Shell Oil Company wanted to prove that its Gold Shell motor oil was of such high quality that it could be used to oil fine Swiss watches. Shell commissioned Girard-Perregaux to make 30,000 of these see-through "skeletonized" watches in November, 1939. 1.4 oz w/movement.



Quantity: 1

15 HAMILTON POCKET WATCH - 1929 - 19j - 12s

HAMILTON POCKET WATCH - 1929 - 19j - 12s; Grade = 918; Size = 12s; Jewels = 19j; Mvmt Config = Openface; Mvmt Set = Pendant; Adj = Y; Serial# 3143818; Addt'l Notes = Adjusted to 3 Positions and Temperature Full plate. 1.9 oz w/movement.



Quantity: 1

Pocket Watch Auction (online-only) 7/2/2020-7/21/2020**LOT #****16 HAMPDEN POCKET WATCH - 1899 - 15j - 12s**

HAMPDEN POCKET WATCH - 1899 - 15j - 12s; Grade = General Stark; Size = 12s; Jewels = 15j; Mvmt Config = Hunting; Mvmt Set = Lever; Adj = N; Serial# 1365753; Add'l Notes = Dust cover engraved "Louis Roberts, Marine City, Mich". Dueber Special case with various small dents. Full case. 2.8 oz w/movement.



Quantity: 1

17 HAMPDEN POCKET WATCH - 1913 - 15j - 12s

HAMPDEN POCKET WATCH - 1913 - 15j - 12s; Grade = 304; Size = 12s; Jewels = 15j; Mvmt Config = Hunting; Mvmt Set = Pendant; Adj = N; Serial# 3046661; Add'l Notes = Bridge plate. Full ornate case. Some scratches on the plastic crystal. 2.5 oz w/movement.



Quantity: 1

18 ILLINOIS POCKET WATCH - 1923 - 19j - 12s

ILLINOIS POCKET WATCH - 1923 - 19j - 12s; Grade = A. Lincoln; Size = 12s; Jewels = 19j; Mvmt Config = Openface; Mvmt Set = Lever; Adj = Y; Serial# 4422596; Add'l Notes = 14K gold filled case. Silver and Gold colored dial. Adjusted to 5 Positions and Temperature. Stem pulled out and we were unable to set the time. Motor Barrel. 1.7 oz w/movement.



Quantity: 1

19 JUNGHANS POCKET WATCH - 1930s - 12s

JUNGHANS POCKET WATCH - 1930s - 12s; Grade = 38a; Size = 12s; Jewels = n/a; Mvmt Config = Openface; Mvmt Set = Pin; Adj = n/a; Serial# n/a; Add'l Notes = Ran for a short time, then stopped. Pendant is fully wound. Pin Set. Blemishes on dial. Plastic crystal. Could not locate serial number. 2.4 oz w/movement.



Quantity: 1

LOT #**20 SOUTH BEND POCKET WATCH - 1915 - 19j - 12s**

SOUTH BEND POCKET WATCH - 1915 - 19j - 12s; Grade = 429; Size = 12s; Jewels = 19j; Mvmt Config = Openface; Mvmt Set = Pendant; Adj = Y; Serial# 817274; Add'l Notes = Large initials engraved on back cover. Bridge plate. Double-Roller. Adjusted to 4 Positions, Temperature and Isochronism. 2.1 oz w/movement.



Quantity: 1

21 VACHERON CONSTANTIN POCKET WATCH - 17j - 12s

VACHERON CONSTANTIN POCKET WATCH - c1915 - 17j - 12s; Grade = Henry Korf on the mvmt.; Size = 12s; Jewels = 17j; Mvmt Config = Openface; Mvmt Set = Pendant; Adj = Y; Serial# 360318; Add'l Notes = Small chip on crystal. Private label "Henry Korf, Cincinnati" on dial and the movement. J.Boss 14K gold filled case. Geneve Swiss markings on movement. Beautiful movement. 2.3 oz w/movement.



Quantity: 1

22 WESTCLOX SCOTTY POCKET WATCH - 1970s - 12s

WESTCLOX SCOTTY POCKET WATCH - 1970s - 12s; Grade = Style 4; Size = 12s; Jewels = n/a; Mvmt Config = Openface; Mvmt Set = Pendant; Adj = N; Serial# n/a; Add'l Notes = Locomotive engraved on back cover. Made in the USA. White plain dial. 1.5 oz w/movement.



Quantity: 1

23 ANSONIA POCKET WATCH - 1896-1929 - 16s

ANSONIA POCKET WATCH - 1896-1929 - 16s; Grade = n/a; Size = 16s; Jewels = n/a; Mvmt Config = Openface; Mvmt Set = Pendant; Adj = n/a; Serial# n/a; Add'l Notes = Does not run. Ansonia "Dollar" Watch. We did not remove the dust cover to inspect the movement. 3.7 oz w/movement.



Quantity: 1

Pocket Watch Auction (online-only) 7/2/2020-7/21/2020

LOT #**24 ELGIN POCKET WATCH - 1884 - 15j - 16s**

ELGIN POCKET WATCH - 1884 - 15j - 16s;
Grade = 49; Size = 16s; Jewels = 15j; Mvmt
Config = Convertible; Mvmt Set = Lever; Adj =
Y; Serial# 1466995; Addt'l Notes = Ran for a
short time, then stopped. Pendant is fully
wound. Consider does not run. Railroad Grade.
3.1 oz w/movement.



Quantity: 1

25 ELGIN POCKET WATCH - 1889 - 11j - 16s

ELGIN POCKET WATCH - 1889 - 11j - 16s;
Grade = 105; Size = 16s; Jewels = 11j; Mvmt
Config = Openface; Mvmt Set = Pendant; Adj =
N; Serial# 3207478; Addt'l Notes = Coin Silver
case. Pendant wind/set. Cracks on the dial. 4.6
oz w/movement.



Quantity: 1

26 ELGIN POCKET WATCH - 1920 - 7j - 16s

ELGIN POCKET WATCH - 1920 - 7j - 16s;
Grade = 291; Size = 16s; Jewels = 7j; Mvmt
Config = Openface; Mvmt Set = Pendant; Adj =
N; Serial# 22650517; Addt'l Notes = Case has
some wear. 3.1 oz w/movement.



Quantity: 1

27 HAMILTON POCKET WATCH - 1913 - 17j - 16s

HAMILTON POCKET WATCH - 1913 - 17j -
16s; Grade = 972; Size = 16s; Jewels = 17j;
Mvmt Config = Openface; Mvmt Set = Pendant;
Adj = Y; Serial# 1052296; Addt'l Notes = Full
visible crystal on the back case to show
movement. Adjusted to 5 Positions,
Temperature & Isochronism. Double Roller.
Dial has a few cracks. 3.3 oz w/movement.
Quantity: 1

**LOT #****28 HAMILTON POCKET WATCH - 1924 - 21j - 16s**

HAMILTON POCKET WATCH - 1924 - 21j -
16s; Grade = 992; Size = 16s; Jewels = 21j;
Mvmt Config = Openface; Mvmt Set = Lever;
Adj = Y; Serial# 2304408; Addt'l Notes = 10K
gold filled case. Adjusted to 5 Positions,
Temperature & Isochronism. Double Roller.
Jewel Material: Ruby & Sapphire. Jewel
Setting: Gold Setting (Screw-Set). Movement
has nickel finish with 2nd Pattern (bar). Small
dents on back case.



Quantity: 1

29 HAMPDEN POCKET WATCH - 1912 - 17j - 16s

HAMPDEN POCKET WATCH - 1912 - 17j -
16s; Grade = 108; Size = 16s; Jewels = 17j;
Mvmt Config = Openface; Mvmt Set = Pendant;
Adj = Y; Serial# 3020270; Addt'l Notes =
Bridge plate. Steel Escape Wheel marking on
the movement. 3.1 oz w/movement.



Quantity: 1

30 ILLINOIS POCKET WATCH - 1917 - 21j - 16s

ILLINOIS POCKET WATCH - 1917 - 21j - 16s;
Grade = Hopkins; Size = 16s; Jewels = 21j;
Mvmt Config = Openface; Mvmt Set = Pendant;
Adj = Y; Serial# 3146477; Addt'l Notes =
Private label "Hopkins" marking on the dial and
the movement. J.Boss gold filled case. Double
Roller. Adjusted to 3 Positions. Dial has a few
cracks. 2.7 oz w/movement.



Quantity: 1

31 JUNGHANS POCKET WATCH - SILVER - 1930s - 16s

JUNGHANS POCKET WATCH - SILVER -
1930s - 16s; Grade = 33; Size = 16s; Jewels =
n/a; Mvmt Config = Openface; Mvmt Set =
Pendant; Adj = n/a; Serial# 13049; Addt'l Notes
= 0.800 Silver Junghans case. Tarnish visible.
Junghans marking on the movement. 3.0 oz
w/movement.



Quantity: 1

Pocket Watch Auction (online-only) 7/2/2020-7/21/2020

LOT #

- 32 MANHATTAN POCKET WATCH - 16s**
 MANHATTAN POCKET WATCH - 1883-1891 - 16s; Grade = n/a; Size = 16s; Jewels = n/a; Mvmt Config = Openface; Mvmt Set = Pin; Adj = N; Serial# 141557; Addt'l Notes = Does not wind. Does not run. Pull pin on top of case to set time. Pendant wind/Pin set. Movement markings include: "Manhattan Watch Co. Patented United States & Great Britain". 4.2 oz w/movement.
 Quantity: 1



- 33 NEW YORK STD POCKET WATCH - 16s**
 NEW YORK STD POCKET WATCH - 1885-1929 - 16s; Grade = Perfection; Size = 16s; Jewels = n/a; Mvmt Config = Openface; Mvmt Set = Pendant; Adj = n/a; Serial# AD227004; Addt'l Notes = Perfection was used as a trade name used on pocket watch movements manufactured by New York Standard Watch Co. Missing the seconds hand. 2.7 oz w/movement.
 Quantity: 1



- 34 NEW YORK STD POCKET WATCH - TIMER - 16s**
 NEW YORK STD POCKET WATCH - TIMER - 1885-1929 - 16s; Grade = n/a; Size = 16s; Jewels = n/a; Mvmt Config = Openface; Mvmt Set = Lever; Adj = n/a; Serial# 5534724; Addt'l Notes = Stopwatch timer works. Nice dial & crystal. 3.7 oz w/movement.
 Quantity: 1



- 35 ROCKFORD POCKET WATCH - 1906 - 11j - 16s**
 ROCKFORD POCKET WATCH - 1906 - 11j - 16s; Grade = 605; Size = 16s; Jewels = 11j; Mvmt Config = Openface; Mvmt Set = Pendant; Adj = N; Serial# 683616; Addt'l Notes = Private label "J.A. Hesselbom, Chicago" on the dial. Pendant wind/set. 3.1 oz w/movement.
 Quantity: 1

**LOT #**

- 36 TIFFANY POCKET WATCH - 16s**
 TIFFANY POCKET WATCH - 16s; Grade = n/a; Size = 16s; Jewels = n/a; Mvmt Config = Openface; Mvmt Set = Pendant; Adj = n/a; Serial# 86481; Addt'l Notes = J.Boss gold filled case. "Suisse" marking on the movement. "Tiffany & Co, New York" markings on the dial and movement. 3.0 oz w/movement.
 Quantity: 1



- 37 WALTHAM POCKET WATCH - 1897 - 7j - 16s**
 WALTHAM POCKET WATCH - 1897 - 7j - 16s; Grade = 20; Size = 16s; Jewels = 7j; Mvmt Config = Openface; Mvmt Set = Pendant; Adj = N; Serial# 6989102; Addt'l Notes = Very ornate case. 3.7 oz w/movement.
 Quantity: 1



- 38 WALTHAM POCKET WATCH - 1902 - 17j - 16s**
 WALTHAM POCKET WATCH - 1902 - 17j - 16s; Grade = Riverside; Size = 16s; Jewels = 17j; Mvmt Config = Hunting; Mvmt Set = Pendant; Adj = Y; Serial# 12014078; Addt'l Notes = Does not run. Missing crystal. Heavy damage to the dial. Large initials engraved on the back cover. Adjusted to position. 3/4 plate with nickel finish. 3.0 oz w/movement.
 Quantity: 1



- 39 WALTHAM POCKET WATCH - 1912 - 17j - 16s**
 WALTHAM POCKET WATCH - 1912 - 17j - 16s; Grade = 625; Size = 16s; Jewels = 17j; Mvmt Config = Hunting; Mvmt Set = Pendant; Adj = N; Serial# 18294129; Addt'l Notes = Dust cover engraved "From Mother & Father, Dec 25, '14". There is a dent and initials on the outer case. 3.6 oz w/movement.
 Quantity: 1



Pocket Watch Auction (online-only) 7/2/2020-7/21/2020

LOT #**40 AURORA POCKET WATCH - 1885 - 11j - 18s**

AURORA POCKET WATCH - 1885 - 11j - 18s; Grade = n/a; Size = 18s; Jewels = 11j; Mvmt Config = Hunting; Mvmt Set = Pendant; Adj = N; Serial# 41367; Addt'l Notes = Pendant wind/Lever Set. Single Sunk dial with minor blemishes. Raised crystal in exc condition. 5.6 oz w/movement.



Quantity: 1

41 AURORA POCKET WATCH - 1887 - 18s

AURORA POCKET WATCH - 1887 - 18s; Grade = n/a; Size = 18s; Jewels = n/a; Mvmt Config = Openface; Mvmt Set = Pendant; Adj = n/a; Serial# 123674; Addt'l Notes = Pendant wind/set. Very clean dial, crystal and movement. 5.3 oz w/movement.



Quantity: 1

42 COLUMBUS POCKET WATCH - 1884 - 11j - 18s

COLUMBUS POCKET WATCH - 1884 - 11j - 18s; Grade = n/a; Size = 18s; Jewels = 11j; Mvmt Config = Openface; Mvmt Set = Key; Adj = n/a; Serial# 23592; Addt'l Notes = KW/KS. No key. Stem pulls out. Needs cleaning, ran for a few minutes, then stopped. Baystate Imperial Coin Silver case. 5.6 oz w/movement.



Quantity: 1

43 COLUMBUS POCKET WATCH - 1886 - 18s

COLUMBUS POCKET WATCH - 1886 - 18s; Grade = n/a; Size = 18s; Jewels = n/a; Mvmt Config = Hunting; Mvmt Set = Lever; Adj = n/a; Serial# 77563; Addt'l Notes = Full case. Crown hallmark inside lid. Private label jeweler "J.F. Hornberger, Lawrenceburgh, Ind" on the dial.



Quantity: 1

LOT #**44 COLUMBUS POCKET WATCH - 1900 - 16j - 18s**

COLUMBUS POCKET WATCH - 1900 - 16j - 18s; Grade = n/a; Size = 18s; Jewels = 16j; Mvmt Config = Either; Mvmt Set = Lever; Adj = N; Serial# 365133; Addt'l Notes = Coin Silver case. "New Columbus" marking on the movement. "Columbus Watch Co" on the dial. Pendant wind/Lever set. Full plate with nickel finish. Small chip between 7 & 8 near the edge. 5.2 oz w/movement.



Quantity: 1

45 ELGIN POCKET WATCH - 1867 - 11j - 18s

ELGIN POCKET WATCH - 1867 - 11j - 18s; Grade = G.M. Wheeler; Size = 18s; Jewels = 11j; Mvmt Config = Either; Mvmt Set = Key; Adj = N; Serial# 8995; Addt'l Notes = Coin Silver case. Very early Elgin. Key set/wind. Includes key. Full plate. Minute hand appears slightly bent. 6.8 oz w/movement.



Quantity: 1

46 ELGIN POCKET WATCH - 1869 - 7j - 18s

ELGIN POCKET WATCH - 1869 - 7j - 18s; Grade = Mat. Laflin; Size = 18s; Jewels = 7j; Mvmt Config = Either; Mvmt Set = Key; Adj = N; Serial# 81265; Addt'l Notes = KS/KW. No key. Hairline crack on dial. 5.4 oz w/movement.



Quantity: 1

47 ELGIN POCKET WATCH - 18K - 1872 - 11j - 18s

ELGIN POCKET WATCH - 18K - 1872 - 11j - 18s; Grade = G.M. Wheeler; Size = 18s; Jewels = 11j; Mvmt Config = Either; Mvmt Set = Key; Adj = N; Serial# 196622; Addt'l Notes = 18K Case. Crown hallmark with 18 inside lid. Key wind/set. Key not included. National Watch Co marking on the dial. There is also some hand-painted initials and flower on the dial. 3.9 oz w/movement.



Quantity: 1

Pocket Watch Auction (online-only) 7/2/2020-7/21/2020

LOT #**48 ELGIN POCKET WATCH - 1893 - 17j - 18s**

ELGIN POCKET WATCH - 1893 - 17j - 18s;
Grade = 124; Size = 18s; Jewels = 17j; Mvmt
Config = Openface; Mvmt Set = Pendant; Adj =
Y; Serial# 4988532; Addt'l Notes = Full plate.
Clean case & dial. 4.2 oz w/movement.



Quantity: 1

49 ELGIN POCKET WATCH - 1896 - 17j - 18s

ELGIN POCKET WATCH - 1896 - 17j - 18s;
Grade = 163; Size = 18s; Jewels = 17j; Mvmt
Config = Hunting; Mvmt Set = Lever; Adj = Y;
Serial# 6478695; Addt'l Notes = Coin Silver
case. Railroad Grade. Adjusted. Case shows
wear. 5.8 oz w/movement.



Quantity: 1

50 ELGIN POCKET WATCH - 1905 - 15j - 18s

ELGIN POCKET WATCH - 1905 - 15j - 18s;
Grade = 297; Size = 18s; Jewels = 15j; Mvmt
Config = Openface; Mvmt Set = Pendant; Adj =
N; Serial# 11453558; Addt'l Notes = Does not
run. Does not wind. Nickel movement finish.
Plastic, tinted crystal is not attached. 3.7 oz
w/movement.



Quantity: 1

51 ELGIN POCKET WATCH - 1911 - 17j - 18s

ELGIN POCKET WATCH - 1911 - 17j - 18s;
Grade = 335; Size = 18s; Jewels = 17j; Mvmt
Config = Hunting; Mvmt Set = Lever; Adj = N;
Serial# 15418761; Addt'l Notes = Coin Silver
case. Nice ornate case. Pendant wind/Lever set.
4.8 oz w/movement.



Quantity: 1

52 HAMILTON POCKET WATCH - 1901 - 17j - 18s

HAMILTON POCKET WATCH - 1901 - 17j -
18s; Grade = 927; Size = 18s; Jewels = 17j;
Mvmt Config = Hunting; Mvmt Set = Lever;
Adj = Y; Serial# 137587; Addt'l Notes = Dial
shows cracks and a chip between 6 & 7.
Pendant wind/Lever set. Full nickel plate.
Adjusted to Temperature. 4.0 oz w/movement.

**LOT #**

Quantity: 1

53 HAMILTON POCKET WATCH - 1906 - 17j - 18s

HAMILTON POCKET WATCH - 1906 - 17j -
18s; Grade = 1925; Size = 18s; Jewels = 17j;
Mvmt Config = Hunting; Mvmt Set = Lever;
Adj = N; Serial# 519316; Addt'l Notes = Small
chip on crystal. Some blemishes on dial. Full
Plate. 4.9 oz w/movement.



Quantity: 1

54 HAMPDEN POCKET WATCH - 1884 - 7j - 18s

HAMPDEN POCKET WATCH - 1884 - 7j -
18s; Grade = Springfield; Size = 18s; Jewels =
7j; Mvmt Config = Either; Mvmt Set = Key;
Adj = N; Serial# 303565; Addt'l Notes = It
winds and runs, but stopped running after a few
minutes. It may only need cleaned/oiled. Key
wind/set. Key not included. Nice clean
movement. Dueber Watch Case paper
advertising inside cover. 5.6 oz w/movement.



Quantity: 1

55 HAMPDEN POCKET WATCH - 1893 - 9j - 18s

HAMPDEN POCKET WATCH - 1893 - 9j -
18s; Grade = Gladiator; Size = 18s; Jewels = 9j;
Mvmt Config = Hunting; Mvmt Set = Lever;
Adj = N; Serial# 785730; Addt'l Notes = Runs
for a short time, then stops. Pendant fully
wound. Visible crack at 12. 5.4oz w/movement.



Quantity: 1

56 ILLINOIS POCKET WATCH - 1872 - 11j - 18s

ILLINOIS POCKET WATCH - 1872 - 11j - 18s;
Grade = Currier; Size = 18s; Jewels = 11j;
Mvmt Config = Either; Mvmt Set = Key; Adj =
N; Serial# 5374; Addt'l Notes = Very early
Illinois Watch in a coin silver case with some
wear. Key wind/set. Key included. Dial
marking "Illinois Springfield Watch Co". 6.4 oz
w/movement.



Quantity: 1

Pocket Watch Auction (online-only) 7/2/2020-7/21/2020

LOT

57 ILLINOIS POCKET WATCH - 1881 - 11j - 18s

ILLINOIS POCKET WATCH - 1881 - 11j - 18s;

Grade = Vanderbilt; Size = 18s; Jewels = 11j;

Mvmt Config = Hunting; Mvmt Set = Lever;

Adj = Y; Serial# 227693; Addt'l Notes =

Pendant wind/Lever set. Vanderbilt marking on the movement. 4.6 oz w/movement.

Quantity: 1

**58 ILLINOIS POCKET WATCH - 1886 - 11j - 18s**

ILLINOIS POCKET WATCH - 1886 - 11j - 18s;

Grade = 2; Size = 18s; Jewels = 11j; Mvmt

Config = Hunting; Mvmt Set = Lever; Adj = N;

Serial# 610903; Addt'l Notes = Very nice case with a hallmark of a Flag with one star. 4.6 oz w/movement.

Quantity: 1

**59 ILLINOIS POCKET WATCH - 1913 - 21j - 18s**

ILLINOIS POCKET WATCH - 1913 - 21j - 18s;

Grade = A. Lincoln; Size = 18s; Jewels = 21j;

Mvmt Config = Openface; Mvmt Set = Lever;

Adj = Y; Serial# 2502607; Addt'l Notes =

American Bald Eagle engraved on case.

Railroad Grade. Adjusted to 5 Positions and Temperature. The plastic crystal is not attached, it is loose. Double Roller. The dial has areas of damage. 4.1 oz w/movement.

Quantity: 1

**60 INDEPENDENT POCKET WATCH - 18s**

INDEPENDENT POCKET WATCH -

1875-1881 - 18s; Grade = n/a; Size = 18s;

Jewels = n/a; Mvmt Config = Hunting; Mvmt

Set = Key; Adj = N; Serial# 180427; Addt'l

Notes = Coin Silver case. Black dial. Movement markings: Independent Watch Co., Fredonia N.Y., Improved April 10. 1879. Key wind/set.

Key included. Pin size dent on case. 5.6 oz w/movement

Quantity: 1



LOT

61 LONGINES POCKET WATCH - 1876 - 18s

LONGINES POCKET WATCH - 1876 - 18s;

Grade = n/a; Size = 18s; Jewels = n/a; Mvmt

Config = Hunting; Mvmt Set = Lever; Adj =

n/a; Serial# n/a; Addt'l Notes = Unmarked

Silver case? "PM" hallmark inside case lid.

Inside lid engraved "to George - 1876". Patent

Stem Winder. Minute hand is slightly bent.

Early Longines. 5.2 oz w/movement.

Quantity: 1

**62 OMEGA POCKET WATCH - 17j - 18s**

OMEGA POCKET WATCH - 1895-1902 - 17j -

18s; Grade = n/a; Size = 18s; Jewels = 17j;

Mvmt Config = Openface; Mvmt Set = Pendant;

Adj = Y; Serial# 1834754; Addt'l Notes = 3/4

plate. Dial and crystal in good shape. 4.0 oz w/movement.

Quantity: 1

**63 PEERLESS POCKET WATCH - 1890s - 18s**

PEERLESS POCKET WATCH - 1890s - 18s;

Grade = n/a; Size = 18s; Jewels = n/a; Mvmt

Config = Openface; Mvmt Set = Lever; Adj =

N; Serial# 816462; Addt'l Notes = 3/4 plate.

Pendant wind, Lever set. Very ornate case. 3.8 oz w/movement.

Quantity: 1

**64 ROCKFORD POCKET WATCH - 1883 - 18s**

ROCKFORD POCKET WATCH - 1883 - 18s;

Grade = n/a; Size = 18s; Jewels = n/a; Mvmt

Config = Hunting; Mvmt Set = Lever; Adj =

n/a; Serial# 165222; Addt'l Notes = Pendant

wind/Lever set. Some chips around the dial

edge. Locomotive engraved on back case. 5.5 oz w/movement.

Quantity: 1



Pocket Watch Auction (online-only) 7/2/2020-7/21/2020

LOT #**65 ROCKFORD POCKET WATCH - 1887 - 11j - 18s**

ROCKFORD POCKET WATCH - 1887 - 11j - 18s; Grade = 69; Size = 18s; Jewels = 11j; Mvmt Config = Hunting; Mvmt Set = Lever; Adj = N; Serial# 264674; Addt'l Notes = Labrador holding a dove engraved on case. Dueber case with anchor hallmarks on all 3 lids. Pendant wind/Lever set. 5.3 oz w/movement.
Quantity: 1

**66 ROCKFORD POCKET WATCH - 1893 - 17j - 18s**

ROCKFORD POCKET WATCH - 1893 - 17j - 18s; Grade = 80; Size = 18s; Jewels = 17j; Mvmt Config = Hunting; Mvmt Set = Lever; Adj = Y; Serial# 415521; Addt'l Notes = Moon shaped jewels on the case. Fancy dial & two-tone movement. Ruby jewels with Gold Screw-Set. Adjusted to Position, Temperature and Isochronism. 5.0 oz w/movement.
Quantity: 1

**67 ROCKFORD POCKET WATCH - 1902 - 17j - 18s**

ROCKFORD POCKET WATCH - 1902 - 17j - 18s; Grade = 930; Size = 18s; Jewels = 17j; Mvmt Config = Openface; Mvmt Set = Lever; Adj = Y; Serial# 580882; Addt'l Notes = Full plate. 4.2 oz w/movement.
Quantity: 1

**68 SETH THOMAS POCKET WATCH - 1909 - 7j - 18s**

SETH THOMAS POCKET WATCH - 1909 - 7j - 18s; Grade = n/a; Size = 18s; Jewels = 7j; Mvmt Config = Openface; Mvmt Set = Pendant; Adj = n/a; Serial# 2536704; Addt'l Notes = Model 8. Train engraved on case. Very clean dial and crystal. Pendant wind/set. Known as the New Eagle Series. 5.3 oz w/movement.
Quantity: 1

**LOT #****69 U.S. (WALTHAM, MA) POCKET WATCH - 15j - 18s**

U.S. (WALTHAM, MA) POCKET WATCH - 1885-1903 - 15j - 18s; Grade = n/a; Size = 18s; Jewels = 15j; Mvmt Config = Openface; Mvmt Set = Lever; Adj = n/a; Serial# 613308; Addt'l Notes = U.S. Watch Co (Waltham, Mass) on the movement. Tarnish/blemish on rear case. 4.0 oz w/movement.
Quantity: 1

**70 WALTHAM POCKET WATCH - 1864 - 11j - 18s**

WALTHAM POCKET WATCH - 1864 - 11j - 18s; Grade = Wm. Ellery; Size = 18s; Jewels = 11j; Mvmt Config = Either; Mvmt Set = Key; Adj = Y; Serial# 129567; Addt'l Notes = Waltham case with an Eagle hallmark. Gold? Key set/wind. Key not included. Partial portrait of a woman on the dial. 4.2 oz w/movement.
Quantity: 1

**71 WALTHAM POCKET WATCH - 1866 - 15j - 18s**

WALTHAM POCKET WATCH - 1866 - 15j - 18s; Grade = Home Watch Co; Size = 18s; Jewels = 15j; Mvmt Config = Openface; Mvmt Set = Key; Adj = n/a; Serial# 242041; Addt'l Notes = Key set/key wind. Key not included. Raised crystal. No markings on dial. Full plate. 5.5 oz w/movement.
Quantity: 1

**72 WALTHAM POCKET WATCH - 1867 - 11j - 18s**

WALTHAM POCKET WATCH - 1867 - 11j - 18s; Grade = P.S. Bartlett; Size = 18s; Jewels = 11j; Mvmt Config = Either; Mvmt Set = Key; Adj = Y; Serial# 308621; Addt'l Notes = It was fully wound at inspection. Does not run. Scratches on the raised crystal. Full plate. Key set/wind. Key included. 5.8 oz w/movement.
Quantity: 1



Pocket Watch Auction (online-only) 7/2/2020-7/21/2020

LOT #**73 WALTHAM POCKET WATCH - 1871 - 11j - 18s**

WALTHAM POCKET WATCH - 1871 - 11j - 18s; Grade = P.S. Bartlett; Size = 18s; Jewels = 11j; Mvmt Config = Either; Mvmt Set = Key; Adj = Y; Serial# 536516; Addt'l Notes = Coin Silver case. Key wind/set. Key included. Full plate. Dial & crystal in very good condition. 5.0 oz w/movement.



Quantity: 1

74 WALTHAM POCKET WATCH - 1871 - 15j - 18s

WALTHAM POCKET WATCH - 1871 - 15j - 18s; Grade = Crescent St; Size = 18s; Jewels = 15j; Mvmt Config = Either; Mvmt Set = Key; Adj = Y; Serial# 550528; Addt'l Notes = Coin Silver case. Railroad Grade. Adjusted to Position. Key wind/set. Key not included. Full plate. 7.9 oz w/movement.



Quantity: 1

75 WALTHAM POCKET WATCH - 1872 - 11j - 18s

WALTHAM POCKET WATCH - 1872 - 11j - 18s; Grade = P.S. Bartlett; Size = 18s; Jewels = 11j; Mvmt Config = Either; Mvmt Set = Key; Adj = Y; Serial# 615743; Addt'l Notes = Coin Silver case. Key set/wind. Key not included. Clean. 8.2 oz w/movement.



Quantity: 1

76 WALTHAM POCKET WATCH - 1877 - 11j - 18s

WALTHAM POCKET WATCH - 1877 - 11j - 18s; Grade = P.S. Bartlett; Size = 18s; Jewels = 11j; Mvmt Config = Either; Mvmt Set = Key; Adj = Y; Serial# 952945; Addt'l Notes = Coin Silver case. Key set/wind. Includes key. Missing the crystal. 5.1 oz w/movement.



Quantity: 1

LOT #**77 WALTHAM POCKET WATCH - 1887 - 11j - 18s**

WALTHAM POCKET WATCH - 1887 - 11j - 18s; Grade = 3; Size = 18s; Jewels = 11j; Mvmt Config = Either; Mvmt Set = Key; Adj = N; Serial# 3384089; Addt'l Notes = Needs cleaning, runs for a short time, then stops. Consider does not run. Fully wound. Key Wind/Key Set. Full plate. Cover does not clasp tightly. 4.8 oz w/movement.



Quantity: 1

78 WALTHAM POCKET WATCH - 1893 - 11j - 18s

WALTHAM POCKET WATCH - 1893 - 11j - 18s; Grade = 3; Size = 18s; Jewels = 11j; Mvmt Config = Openface; Mvmt Set = Pendant; Adj = N; Serial# 5622237; Addt'l Notes = Shows a lot of wear, but runs. 5.2 oz w/movement.



Quantity: 1

79 WALTHAM POCKET WATCH - 1902 - 21j - 18s

WALTHAM POCKET WATCH - 1902 - 21j - 18s; Grade = Crescent St; Size = 18s; Jewels = 21j; Mvmt Config = Openface; Mvmt Set = Lever; Adj = Y; Serial# 12052866; Addt'l Notes = Montgomery Dial. Adjusted to Position. Clean dial & crystal. 6.2 oz w/movement.



Quantity: 1

80 6 ASSORTED DIALS

Various sizes. Elgin, Hampden and South Bend. Quantity: 1

**81 11 ASSORTED CASES**

11 ASSORTED CASES; Addt'l Notes = Eleven assorted cases. Various sizes. As-is condition. Some are damaged.



Quantity: 1

Pocket Watch Auction (online-only) 7/2/2020-7/21/2020

LOT #**82 POCKET WATCH CHAIN**

POCKET WATCH CHAIN; Addt'l Notes = 12"
long. Includes a #4 key.
Quantity: 1

**83 POCKET WATCH CHAIN**

POCKET WATCH CHAIN; Addt'l Notes = 10"
long.
Quantity: 1

**84 POCKET WATCH CHAIN**

POCKET WATCH CHAIN; Addt'l Notes = 12"
long.
Quantity: 1

**85 POCKET WATCH CHAIN**

POCKET WATCH CHAIN; Addt'l Notes = 12"
long.
Quantity: 1

**86 POCKET WATCH CHAIN**

POCKET WATCH CHAIN; Addt'l Notes = 13"
long.
Quantity: 1

**87 POCKET WATCH FOB & CHAIN**

POCKET WATCH FOB & CHAIN; Addt'l
Notes = 14" long. Modern Woodsmen of
America watch fob.
Quantity: 1

**LOT #****88 POCKET WATCH FOB & CHAIN**

POCKET WATCH FOB & CHAIN; Addt'l
Notes = 5" long. Clasp.
Quantity: 1

**89 ELGIN PARTS CASE**

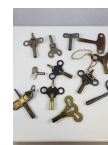
ELGIN PARTS CASE; Addt'l Notes = We're not
sure what these are used for but they both have
"Elgin National Watch Co" markings on the
case. Qty 2.
Quantity: 1

**90 12 ASSORTED CLOCK KEYS**

12 ASSORTED CLOCK KEYS
Quantity: 1

**91 12 ASSORTED CLOCK KEYS**

12 ASSORTED CLOCK KEYS
Quantity: 1

**92 12 ASSORTED CLOCK KEYS**

12 ASSORTED CLOCK KEYS
Quantity: 1

**93 12 ASSORTED CLOCK KEYS**

12 ASSORTED CLOCK KEYS
Quantity: 1

**94 12 ASSORTED CLOCK KEYS**

12 ASSORTED CLOCK KEYS
Quantity: 1

