

Pocket Watch Auction - (online-only) 5/16/2020-5/31/2020

LOT #

1 WALTHAM POCKET WATCH - 1898 - 7j - 6/0s

WALTHAM POCKET WATCH - 1898 - 7j - 6/0s; Grade=Seaside; Size=6/0s; Jewels=7j; Mvmt Config=Hunting; Mvmt Set=Pendant; Adj=N; Serial# 8594991; Add'l Notes=Fancy dial. Sterling Silver Case. Pendant feels loose. Runs for a short time, then stops.



Quantity: 1

2 HAMPDEN POCKET WATCH - 1909 - 7j - 3/0s

HAMPDEN POCKET WATCH - 1909 - 7j - 3/0s; Grade=Molly Stark; Size=3/0s; Jewels=7j; Mvmt Config=Hunting; Mvmt Set=Lever; Adj=N; Serial# 2633226; Add'l Notes=Runs for a short amount of time and then stops. May just need cleaned & oiled. We will mark this as does NOT run. "Molly Stark" marking on the movement.



Quantity: 1

3 ELGIN POCKET WATCH - 1895 - 7j - 0s

ELGIN POCKET WATCH - 1895 - 7j - 0s; Grade=109; Size=0s; Jewels=7j; Mvmt Config=Hunting; Mvmt Set=Pendant; Adj=N; Serial# 5613950; Add'l Notes=3/4 plate. Slight overextension on the cover hinge. Ornate case on both sides.



Quantity: 1

4 ELGIN POCKET WATCH - 1897 - 7j - 0s

ELGIN POCKET WATCH - 1897 - 7j - 0s; Grade=109; Size=0s; Jewels=7j; Mvmt Config=Hunting; Mvmt Set=Pendant; Adj=N; Serial# 6686380; Add'l Notes=3/4 plate. Slight overextension on the cover hinge. Ornate case on both sides.



Quantity: 1

LOT #

5 ELGIN POCKET WATCH - 1907 - 7j - 0s

ELGIN POCKET WATCH - 1907 - 7j - 0s; Grade=320; Size=0s; Jewels=7j; Mvmt Config=Hunting; Mvmt Set=Pendant; Adj=N; Serial# 12900662; Add'l Notes=Double roller. Dust cover and both outer case covers hinges are overextended. Blemishes on both sides of case.



Quantity: 1

6 ELGIN POCKET WATCH - 1908 - 7j - 0s

ELGIN POCKET WATCH - 1908 - 7j - 0s; Grade=320; Size=0s; Jewels=7j; Mvmt Config=Hunting; Mvmt Set=Pendant; Adj=N; Serial# 13244288; Add'l Notes=Fancy Dial. Ornate case.



Quantity: 1

7 NEW ENGLAND W.C. POCKET WATCH - 0s

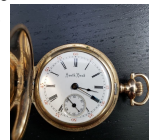
NEW ENGLAND W.C. POCKET WATCH - 0s; Grade=?; Size=0s; Jewels=?; Mvmt Config=Hunting; Mvmt Set=Pendant; Adj=N; Serial# N/A; Add'l Notes=Does NOT run. 10K gold filled case. Missing crystal. Dust cover engraved "Mar-20-'04; Mrs E. O. Sheiber from F.S.". Movement markings include "Queen xxxx - N.E.W.C. - USA". Manufactured date 1898-1914.



Quantity: 1

8 SOUTH BEND POCKET WATCH - 1911 - 7j - 0s

SOUTH BEND POCKET WATCH - 1911 - 7j - 0s; Grade=100; Size=0s; Jewels=7j; Mvmt Config=Hunting; Mvmt Set=Pendant; Adj=N; Serial# 665020; Add'l Notes=Beautiful case. Bridge Plate.



Quantity: 1

Pocket Watch Auction - (online-only) 5/16/2020-5/31/2020

LOT #**9 U.S. (WALTHAM, MA) POCKET WATCH - 11j - 0s**

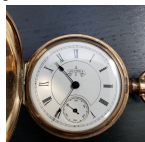
U.S. (WALTHAM, MA) POCKET WATCH - 11j - 0s; Grade=?; Size=0s; Jewels=11j; Mvmt Config=Hunting; Mvmt Set=Lever; Adj=?; Serial# 714782; Addt'l Notes="A New Watch Company at Waltham, Est'd 1885" marking on the movement. Manufactured date 1885-1903. Quantity: 1

**10 COLUMBIA POCKET WATCH - 6s**

COLUMBIA POCKET WATCH - 6s; Grade=?; Size=6s; Jewels=?; Mvmt Config=Hunting; Mvmt Set=Lever; Adj=N; Serial# 6495207; Addt'l Notes=Light blue ring on dial. Runs, but needs cleaning & oil. There is a dove engraved on cover. Columbia marking on movement but it appears to be a SWISS fake. Quantity: 1

**11 COLUMBUS POCKET WATCH - 1888 - 11j - 6s**

COLUMBUS POCKET WATCH - 1888 - 11j - 6s; Grade=?; Size=6s; Jewels=11j; Mvmt Config=Hunting; Mvmt Set=Lever; Adj=N; Serial# 127737; Addt'l Notes=Nice ornate case with a dove engraved on one side and initials on the other. Quantity: 1

**12 ELGIN POCKET WATCH - 1888 - 7j - 6s**

ELGIN POCKET WATCH - 1888 - 7j - 6s; Grade=95; Size=6s; Jewels=7j; Mvmt Config=Hunting; Mvmt Set=Lever; Adj=N; Serial# 2516199; Addt'l Notes=Has a tinted crystal. Quantity: 1

**LOT #****13 ELGIN POCKET WATCH - 1889 - 11j - 6s**

ELGIN POCKET WATCH - 1889 - 11j - 6s; Grade=101; Size=6s; Jewels=11j; Mvmt Config=Hunting; Mvmt Set=Lever; Adj=N; Serial# 3096596; Addt'l Notes=Very nice Brooklyn Watch Case Co case. Dove with ribbon "Elgin" on dial. Small hairline crack near the 5. Quantity: 1

**14 ELGIN POCKET WATCH - 1890 - 7j - 6s**

ELGIN POCKET WATCH - 1890 - 7j - 6s; Grade=95; Size=6s; Jewels=7j; Mvmt Config=Hunting; Mvmt Set=Lever; Adj=N; Serial# 3946403; Addt'l Notes=When setting the time, we noticed the hands would run into one another. Quantity: 1

**15 ELGIN POCKET WATCH - 1895 - 7j - 6s**

ELGIN POCKET WATCH - 1895 - 7j - 6s; Grade=117; Size=6s; Jewels=7j; Mvmt Config=Hunting; Mvmt Set=Pendant; Adj=N; Serial# 5843224; Addt'l Notes=Ran for a short time and then stopped. As-is. May just need cleaned & oiled. It was already fully wound when we inspected. Quantity: 1

**16 ELGIN POCKET WATCH - 1896 - 7j - 6s**

ELGIN POCKET WATCH - 1896 - 7j - 6s; Grade=117; Size=6s; Jewels=7j; Mvmt Config=Hunting; Mvmt Set=Pendant; Adj=N; Serial# 6422189; Addt'l Notes=Over-extended cover hinge. Small crack on the dial between 7 & 8. Quantity: 1



Pocket Watch Auction - (online-only) 5/16/2020-5/31/2020

LOT #**17 ROCKFORD POCKET WATCH - 1892 - 11j - 6s**

ROCKFORD POCKET WATCH - 1892 - 11j - 6s; Grade=L1; Size=6s; Jewels=11j; Mvmt Config=Hunting; Mvmt Set=Lever; Adj=N; Serial# 398135; Add'l Notes=3/4 plate.
Quantity: 1

**LOT #****22 WALTHAM POCKET WATCH - 1906 - 15j - 6s**

WALTHAM POCKET WATCH - 1906 - 15j - 6s; Grade=Seaside; Size=6s; Jewels=15j; Mvmt Config=Hunting; Mvmt Set=Pendant; Adj=N; Serial# 14923949; Add'l Notes=Inside dust cover engraved "E. Champion. Dec 25, 08". 3/4 Split Plate. Gilt Movement Finish. Ornate case.
Quantity: 1

**18 TRENTON POCKET WATCH - 6s**

TRENTON POCKET WATCH - 6s; Grade=?; Size=6s; Jewels=?; Mvmt Config=Hunting; Mvmt Set=Lever; Adj=N; Serial# 500479; Add'l Notes=Nice ornate case. Manufactured date 1887-1908.
Quantity: 1

**23 ELGIN POCKET WATCH - 1883 - 11j - 8s**

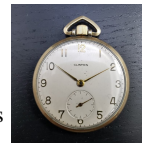
ELGIN POCKET WATCH - 1883 - 11j - 8s; Grade=94; Size=8s; Jewels=11j; Mvmt Config=Hunting; Mvmt Set=Lever; Adj=N; Serial# 1193177; Add'l Notes=Initials M.B. on the cover.
Quantity: 1

**19 U.S. (WALTHAM, MA) POCKET WATCH - 6s**

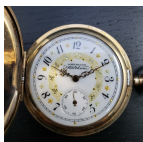
U.S. (WALTHAM, MA) POCKET WATCH - 6s; Grade=?; Size=6s; Jewels=?; Mvmt Config=Hunting; Mvmt Set=Lever; Adj=?; Serial# 78264; Add'l Notes="U.S. Watch Co - Waltham, Mass" markings on the movement. Manufactured date 1885-1903.
Quantity: 1

**24 HELBROS POCKET WATCH - 17j - 8s**

HELBROS POCKET WATCH - 17j - 8s; Grade=93; Size=8s; Jewels=17j; Mvmt Config=Openface; Mvmt Set=Pendant; Adj=N; Serial# N/A; Add'l Notes=Does NOT run. Does NOT wind. SWISS marking on the dial. "Clinton" marking on the dial. Thin case.
Quantity: 1

**20 WALTHAM POCKET WATCH - 1892 - 7j - 6s**

WALTHAM POCKET WATCH - 1892 - 7j - 6s; Grade=J; Size=6s; Jewels=7j; Mvmt Config=Hunting; Mvmt Set=Pendant; Adj=N; Serial# 5615039; Add'l Notes=Fancy Dial. Hairline cracks on the dial. 3/4 plate. Initials "C.E." on one of the outside covers.
Quantity: 1

**25 WALTHAM POCKET WATCH - 1882 - 7j - 8s**

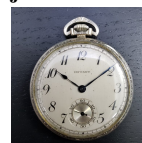
WALTHAM POCKET WATCH - 1882 - 7j - 8s; Grade=Royal; Size=8s; Jewels=7j; Mvmt Config=Hunting; Mvmt Set=Lever; Adj=Y; Serial# 1742468; Add'l Notes=3/4 plate. Slight overextension on the cover hinge. Ornate case on both sides.
Quantity: 1

**21 WALTHAM POCKET WATCH - 1895 - 11j - 6s**

WALTHAM POCKET WATCH - 1895 - 11j - 6s; Grade=L; Size=6s; Jewels=11j; Mvmt Config=Hunting; Mvmt Set=Pendant; Adj=N; Serial# 6434038; Add'l Notes=Nice ornate case. Initials "AS" on the cover.
Quantity: 1

**26 E. HOWARD POCKET WATCH - 1921 - 17j - 10s**

E. HOWARD POCKET WATCH - 1921 - 17j - 10s; Grade=Series 12; Size=10s; Jewels=17j; Mvmt Config=Openface; Mvmt Set=Pendant; Adj=Y; Serial# 24684; Add'l Notes=Bridge plate with nickel finish. Adj 3 Pos, Temp and Isochronism. Inside back cover engraved "Presented to B.H. White by Liberty Bank of Buffalo, NY". An initial "W" is engraved on the



Pocket Watch Auction - (online-only) 5/16/2020-5/31/2020

LOT #

back cover.
Quantity: 1

27 ELGIN POCKET WATCH - 1871 - 15j - 10s

ELGIN POCKET WATCH - 1871 - 15j - 10s;
Grade=29 - Lady Elgin; Size=10s; Jewels=15j;
Mvmt Config=Either; Mvmt Set=Key; Adj=N;
Serial# 132173; Addt'l Notes=Coin silver case.
3/4 Plate. Includes a #5 key.
Quantity: 1

**28 ELGIN POCKET WATCH - 1882 - 11j - 10s**

ELGIN POCKET WATCH - 1882 - 11j - 10s;
Grade=Gail Borden; Size=10s; Jewels=11j;
Mvmt Config=Either; Mvmt Set=Key; Adj=N;
Serial# 949686; Addt'l Notes=Key wind and set,
but there is no key. Ornate case with a sailboat
engraved on one cover.
Quantity: 1

**29 GRUEN VERI-THIN POCKET WATCH - 15j - 10s**

GRUEN VERI-THIN POCKET WATCH - 15j -
10s; Grade=Veri-Thin; Size=10s; Jewels=15j;
Mvmt Config=Openface; Mvmt Set=Pendant;
Adj=N; Serial# 4-137117; Addt'l Notes=10K
gold filled case. Back cover shows some wear.
Switzerland, Conoruma and Veri-Thin markings
on movement.
Quantity: 1

**30 ELGIN POCKET WATCH - 1917 - 17j - 12s**

ELGIN POCKET WATCH - 1917 - 17j - 12s;
Grade=345; Size=12s; Jewels=17j; Mvmt
Config=Openface; Mvmt Set=Pendant; Adj=Y;
Serial# 19456446; Addt'l Notes=Does NOT run.
When winding, the pendulum seems to click.
Double roller. 3/4 plate. "G.O. 1920" engraved
on the back cover.
Quantity: 1

**LOT #****31 ILLINOIS POCKET WATCH - 1917 - 17j - 12s**

ILLINOIS POCKET WATCH - 1917 - 17j - 12s;
Grade=404 - Illinois Central; Size=12s;
Jewels=17j; Mvmt Config=Openface; Mvmt
Set=Pendant; Adj=N; Serial# 3110202; Addt'l
Notes=14K gold filled case. Double Roller.
"F.F.C." initials engraved on back cover.
"Illinois Central" marking on the movement.
Quantity: 1

**32 ILLINOIS POCKET WATCH - 1919 - 17j - 12s**

ILLINOIS POCKET WATCH - 1919 - 17j - 12s;
Grade=405 - The Autocrat; Size=12s;
Jewels=17j; Mvmt Config=Openface; Mvmt
Set=Pendant; Adj=Y; Serial# 3461712; Addt'l
Notes=Thin case with HAH initials on back
cover. Inside back cover initials F.B. to H.H.
Adjusted 3 Positions and Temp. Double Roller.
"The Autocrat" marking on the movement.
Quantity: 1

**33 ILLINOIS POCKET WATCH - 1926 - 21j - 12s**

ILLINOIS POCKET WATCH - 1926 - 21j - 12s;
Grade=274 - Diplomat; Size=12s; Jewels=21j;
Mvmt Config=Openface; Mvmt Set=Pendant;
Adj=Y; Serial# 4769803; Addt'l Notes=Very
nice IL watch. Adjusted 3 positions and temp.
Double Roller. "Diplomat" marking on the
movement.
Quantity: 1

**34 BALL W.C. POCKET WATCH - 1919 - 17j - 16s**

BALL W.C. POCKET WATCH - 1919 - 17j -
16s; Grade=Commercial Standard; Size=16s;
Jewels=17j; Mvmt Config=Openface; Mvmt
Set=Pendant; Adj=Y; Serial# B265565; Addt'l
Notes=Manufactured by Waltham, Commercial
Standard. Adjusted to 5 positions and temp. The
crystal is completely loose.
Quantity: 1



Pocket Watch Auction - (online-only) 5/16/2020-5/31/2020

LOT #**35 DAN PATCH 1:55 POCKET WATCH & CHRONOGRAPH - 7j - 1**

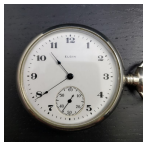
DAN PATCH 1:55 POCKET WATCH & CHRONOGRAPH - 7j - 16s; Grade=New York Std Model; Size=16s; Jewels=7j; Mvmt Config=Openface; Mvmt Set=Pendant; Adj=?; Serial# GC007258; Addt'l Notes=The stopwatch function was not working but the watch winds & runs. "Dan Patch 1:55" and horse head engraved on back (reference to World Record Harness Race). Manufactured by New York Standard.

Quantity: 1

**36 ELGIN POCKET WATCH - 1899 - 15j - 16s**

ELGIN POCKET WATCH - 1899 - 15j - 16s; Grade=152; Size=16s; Jewels=15j; Mvmt Config=Hunting; Mvmt Set=Pendant; Adj=N; Serial# 7683001; Addt'l Notes=3/4 plate. Clean dial and crystal.

Quantity: 1

**37 ELGIN POCKET WATCH - 1907 - 15j - 16s**

ELGIN POCKET WATCH - 1907 - 15j - 16s; Grade=312; Size=16s; Jewels=15j; Mvmt Config=Hunting; Mvmt Set=Pendant; Adj=N; Serial# 12529045; Addt'l Notes=Eagle engraved on back cover. 3/4 plate.

Quantity: 1

**38 ELGIN POCKET WATCH - 1915 - 7j - 16s**

ELGIN POCKET WATCH - 1915 - 7j - 16s; Grade=290; Size=16s; Jewels=7j; Mvmt Config=Hunting; Mvmt Set=Pendant; Adj=N; Serial# 18129457; Addt'l Notes="H.F.R." initials engraved on dust cover. 3/4 plate with nickel finish.

Quantity: 1

**LOT #****39 ELGIN POCKET WATCH - 1924 - 7j - 16s**

ELGIN POCKET WATCH - 1924 - 7j - 16s; Grade=291; Size=16s; Jewels=7j; Mvmt Config=Openface; Mvmt Set=Pendant; Adj=N; Serial# 26095718; Addt'l Notes=3/4 plate. Small crack on the dial at 7.

Quantity: 1

**40 ELGIN POCKET WATCH - 1931 - 17j - 16s**

ELGIN POCKET WATCH - 1931 - 17j - 16s; Grade=387; Size=16s; Jewels=17j; Mvmt Config=Openface; Mvmt Set=Pendant; Adj=N; Serial# 32746948; Addt'l Notes=Winds, but DOES NOT RUN. 10K gold filled case.

Double-Roller. 3/4 Plate with nickel finish.

Quantity: 1

**41 EQUITY POCKET WATCH - 7j - 16s**

EQUITY POCKET WATCH - 7j - 16s; Grade=?; Size=16s; Jewels=7j; Mvmt Config=Openface; Mvmt Set=Pendant; Adj=N; Serial# 40251; Addt'l Notes=Equity was used as a trade name used on pocket watch movements manufactured by Waltham. There are many scratches on the crystal.

Quantity: 1

**42 HAMPDEN POCKET WATCH - 1913 - 15j - 16s**

HAMPDEN POCKET WATCH - 1913 - 15j - 16s; Grade=No. 99; Size=16s; Jewels=15j; Mvmt Config=Hunting; Mvmt Set=Pendant; Adj=N; Serial# 3074331; Addt'l Notes=14K Gold Filled Case and inside cover has original Dueber Watch Case paper with serial#. Bridge plate with nickel finish. Runs for a short time and then stops. It may only need cleaning and oiled.

Quantity: 1



Pocket Watch Auction - (online-only) 5/16/2020-5/31/2020

LOT #**43 HAMPDEN POCKET WATCH - 1915 - 17j - 16s**

HAMPDEN POCKET WATCH - 1915 - 17j - 16s; Grade=108; Size=16s; Jewels=17j; Mvmt Config=Openface; Mvmt Set=Pendant; Adj=N; Serial# 3414266; Addt'l Notes=Does NOT wind, does NOT run. 3/4 plate. Tinted crystal. Quantity: 1

**LOT #****47 SOUTH BEND POCKET WATCH - 1928 - 17j - 16s**

SOUTH BEND POCKET WATCH - 1928 - 17j - 16s; Grade=211; Size=16s; Jewels=17j; Mvmt Config=Openface; Mvmt Set=Pendant; Adj=Y; Serial# 1203692; Addt'l Notes=Very nice dial and crystal. 3/4 plate. Double Roller. Quantity: 1

**44 HOWARD POCKET WATCH - 1908 - 17j - 16s**

HOWARD POCKET WATCH - 1908 - 17j - 16s; Grade=Series 3; Size=16s; Jewels=17j; Mvmt Config=Openface; Mvmt Set=Pendant; Adj=Y; Serial# 900665; Addt'l Notes="Montgomery Dial" with the 6 inside the seconds bit. Initials engraved on back cover. Quantity: 1

**48 WASHINGTON POCKET WATCH - 1872-4 - 17j - 16s**

WASHINGTON POCKET WATCH - 1872-4 - 17j - 16s; Grade=?; Size=16s; Jewels=17j; Mvmt Config=Openface; Mvmt Set=Pendant; Adj=?; Serial# 8099855; Addt'l Notes=3/4 plate. Very nice dial. Some small dents on back cover. Quantity: 1

**45 ILLINOIS POCKET WATCH - 1913 - 17j - 16s**

ILLINOIS POCKET WATCH - 1913 - 17j - 16s; Grade=605; Size=16s; Jewels=17j; Mvmt Config=Openface; Mvmt Set=Pendant; Adj=Y; Serial# 2565240; Addt'l Notes=Full viewing window on back cover to display working movement. Some case wear along rim. Adjusted to 3 Positions and Temp. Quantity: 1

**49 UNKNOWN FRENCH/SWISS POCKET WATCH - 15j - 18.5****Lig**

UNKNOWN FRENCH/SWISS POCKET WATCH - 15j - 18.5 Ligne; Grade=?; Size=18.5 Ligne; Jewels=15j; Mvmt Config=Openface; Mvmt Set=Pendant; Adj=?; Serial# N/A; Addt'l Notes=FRENCH or SWISS. Dial reads "CHRONOMETRE -- A. Baronheid -- ANVERS". 24 clock numerals. Runs, but there are blemishes on the dial and the pendant is loose. We were unable to "set" the time. Quantity: 1

**46 NON-MAGNETIC POCKET WATCH - 1885-95 - 16s**

NON-MAGNETIC POCKET WATCH - 1885-95 - 16s; Grade=?; Size=16s; Jewels=?; Mvmt Config=Openface; Mvmt Set=Pendant; Adj=Y; Serial# 57267; Addt'l Notes=Initials WG engraved on back cover. Movement markings include "Paillard's Patent" and "Balance & Spring". Manufactured date 1885-95. Quantity: 1

**50 ELGIN POCKET WATCH - 1875 - 7j - 17s**

ELGIN POCKET WATCH - 1875 - 7j - 17s; Grade=T.M. Avery; Size=17s; Jewels=7j; Mvmt Config=Either; Mvmt Set=Key; Adj=N; Serial# 405075; Addt'l Notes=The database marked this as a size 17. Coin silver case. Over-extended cover. "R" engraved on dust cover and outer cover. Full plate. Back case does not clasp fully due to small dent on side of case. Quantity: 1



Pocket Watch Auction - (online-only) 5/16/2020-5/31/2020

LOT #**51 AURORA POCKET WATCH - 1885 - 11j - 18s**

AURORA POCKET WATCH - 1885 - 11j - 18s; Grade=?; Size=18s; Jewels=11j; Mvmt Config=Hunting; Mvmt Set=Lever; Adj=N; Serial# 23352; Add'l Notes=Dust cover has SWISS marking on inside.



Quantity: 1

52 AURORA POCKET WATCH - 1886 - 15j - 18s

AURORA POCKET WATCH - 1886 - 15j - 18s; Grade=?; Size=18s; Jewels=15j; Mvmt Config=Openface; Mvmt Set=Pendant; Adj=?; Serial# 91573; Add'l Notes=Private label "A. Wagner & Bro. Monroe, Mich" marking on the dial. Full plate nickel finish movement.



Quantity: 1

53 COLUMBIA POCKET WATCH - 1896 - 7j - 18s

COLUMBIA POCKET WATCH - 1896 - 7j - 18s; Grade=?; Size=18s; Jewels=7j; Mvmt Config=Openface; Mvmt Set=Key; Adj=N; Serial# 149436; Add'l Notes=DOES NOT WIND. DOES NOT RUN. Movement does not sit tight in the case, it feels loose. Front cover does not snap tight. No key. Dust cover has owner name scratched off. Consider this a PARTS-ONLY watch.



Quantity: 1

54 COLUMBUS POCKET WATCH - 1890 - 18s

COLUMBUS POCKET WATCH - 1890 - 18s; Grade=?; Size=18s; Jewels=?; Mvmt Config=Hunting; Mvmt Set=Lever; Adj=?; Serial# 171881; Add'l Notes=Nice ornate case with a bird on one side. Full plate. Dirty crystal.



Quantity: 1

LOT #**55 COLUMBUS POCKET WATCH - 1902 - 16j - 18s**

COLUMBUS POCKET WATCH - 1902 - 16j - 18s; Grade=Railway King; Size=18s; Jewels=16j; Mvmt Config=Openface; Mvmt Set=Lever; Adj=Y; Serial# 356228; Add'l Notes=Full plate. Railway King marking on the dial and movement. We were unable to "set" the time using the lever.



Quantity: 1

56 ELGIN POCKET WATCH - 1867 - 15j - 18s

ELGIN POCKET WATCH - 1867 - 15j - 18s; Grade=B.W. Raymond; Size=18s; Jewels=15j; Mvmt Config=Either; Mvmt Set=Key; Adj=Y; Serial# 4855; Add'l Notes=VERY EARLY ELGIN. Railroad Grade. Coin silver case. Dial in excellent condition with "National Watch Co" marking. No key.



Quantity: 1

57 ELGIN POCKET WATCH - 1869 - 18s

ELGIN POCKET WATCH - 1869 - 18s; Grade=H.S. Abbey; Size=18s; Jewels=?; Mvmt Config=Either; Mvmt Set=Key; Adj=?; Serial# 30025; Add'l Notes=Coin silver case. "H.S. Abbey" marking on the movement and the dial. Large seconds dial. Akron, Ohio marking on the movement. No key. We could not find any info regarding H.S. Abbey from Elgin.



Quantity: 1

58 ELGIN POCKET WATCH - 1871 - 7j - 18s

ELGIN POCKET WATCH - 1871 - 7j - 18s; Grade=Mat. Laflin; Size=18s; Jewels=7j; Mvmt Config=Either; Mvmt Set=Key; Adj=N; Serial# 63639; Add'l Notes=Does NOT run. Key wind, but does not include a key. Coin silver case.



Quantity: 1

Pocket Watch Auction - (online-only) 5/16/2020-5/31/2020

LOT #**59 ELGIN POCKET WATCH - 1871 - 11j - 18s**

ELGIN POCKET WATCH - 1871 - 11j - 18s;
Grade=M.A. Kinnie; Size=18s; Jewels=11j;
Mvmt Config=Either; Mvmt Set=Key; Adj=N;
Serial# 150663; Addt'l Notes=Coin silver case
in very nice shape. Private label Elgin with
"M.A. Kinnie" and "Joliet, IL" marking on the
movement and "National Watch Co" on the dial.
Some surface damage on dial. No key.
Quantity: 1

**LOT #****64 ELGIN POCKET WATCH - 1889 - 7j - 18s**

ELGIN POCKET WATCH - 1889 - 7j - 18s;
Grade=73; Size=18s; Jewels=7j; Mvmt
Config=Openface; Mvmt Set=Pendant; Adj=N;
Serial# 3145134; Addt'l Notes=Coin silver case
with minor dents on the back cover. Dust cover
and back cover do not snap closed. Very nice
raised crystal. Dial has a crack.
Quantity: 1

**60 ELGIN POCKET WATCH - 1878 - 11j - 18s**

ELGIN POCKET WATCH - 1878 - 11j - 18s;
Grade=13; Size=18s; Jewels=11j; Mvmt
Config=Either; Mvmt Set=Key; Adj=N; Serial#
524693; Addt'l Notes=Coin silver case. No key.
Quantity: 1

**65 ELGIN POCKET WATCH - 1891 - 15j - 18s**

ELGIN POCKET WATCH - 1891 - 15j - 18s;
Grade=92; Size=18s; Jewels=15j; Mvmt
Config=Hunting; Mvmt Set=Lever; Adj=N;
Serial# 4072090; Addt'l Notes=3/4 plate.
Porcelain dial with Roman numerals in
excellent condition.
Quantity: 1

**61 ELGIN POCKET WATCH - 1881 - 7j - 18s**

ELGIN POCKET WATCH - 1881 - 7j - 18s;
Grade=6; Size=18s; Jewels=7j; Mvmt
Config=Hunting; Mvmt Set=Lever; Adj=N;
Serial# 821059; Addt'l Notes=Winds, but
DOES NOT RUN. Swing-out movement. Clean
dial and case.
Quantity: 1

**66 ELGIN POCKET WATCH - 1894 - 7j - 18s**

ELGIN POCKET WATCH - 1894 - 7j - 18s;
Grade=97; Size=18s; Jewels=7j; Mvmt
Config=Either; Mvmt Set=Key; Adj=N; Serial#
5431337; Addt'l Notes=Full plate. Ran for a
short time and then stopped. We will consider it
does NOT run. Pendant appeared loose or
broken. No key.
Quantity: 1

**62 ELGIN POCKET WATCH - 1882 - 11j - 18s**

ELGIN POCKET WATCH - 1882 - 11j - 18s;
Grade=13; Size=18s; Jewels=11j; Mvmt
Config=Either; Mvmt Set=Key; Adj=N; Serial#
965723; Addt'l Notes=Coin silver case. Minor
dents and scratches in case. No key.
Quantity: 1

**67 ELGIN POCKET WATCH - 1899 - 7j - 18s**

ELGIN POCKET WATCH - 1899 - 7j - 18s;
Grade=207; Size=18s; Jewels=7j; Mvmt
Config=Hunting; Mvmt Set=Lever; Adj=N;
Serial# 7984203; Addt'l Notes=Full plate,
damaskeened finish. Full ornate case with dust
cover.
Quantity: 1

**63 ELGIN POCKET WATCH - 1887 - 15j - 18s**

ELGIN POCKET WATCH - 1887 - 15j - 18s;
Grade=100; Size=18s; Jewels=15j; Mvmt
Config=Convertible; Mvmt Set=Pendant;
Adj=N; Serial# 2226863; Addt'l Notes=3/4
plate. Hairline cracks on the dial
Quantity: 1



Pocket Watch Auction - (online-only) 5/16/2020-5/31/2020

LOT

68 ELGIN POCKET WATCH - 1903 - 17j - 18s

ELGIN POCKET WATCH - 1903 - 17j - 18s;
Grade=B.W. Raymond; Size=18s; Jewels=17j;
Mvmt Config=Openface; Mvmt Set=Pendant;
Adj=Y; Serial# 9863826; Addt'l Notes=Fancy
dial. Gibraltar gold filled case. Railroad Grade.
Adjusted to position and isochronism.



Quantity: 1

69 HAMILTON POCKET WATCH - 1926 - 17j - 18s

HAMILTON POCKET WATCH - 1926 - 17j -
18s; Grade=974; Size=18s; Jewels=17j; Mvmt
Config=Openface; Mvmt Set=Pendant; Adj=Y;
Serial# 2442016; Addt'l Notes=Dull back cover,
some blemish to seconds dial. 3/4 plate.



Quantity: 1

70 HAMPDEN POCKET WATCH - 1878 - 7j - 18s

HAMPDEN POCKET WATCH - 1878 - 7j -
18s; Grade=Springfield; Size=18s; Jewels=7j;
Mvmt Config=Either; Mvmt Set=Key; Adj=N;
Serial# 118241; Addt'l Notes=DOES NOT
WIND. DOES NOT RUN. No key. Full plate,
raised crystal, nice shape.



Quantity: 1

71 HAMPDEN POCKET WATCH - 1891 - 11j - 18s

HAMPDEN POCKET WATCH - 1891 - 11j -
18s; Grade=Dueber Watch Co; Size=18s;
Jewels=11j; Mvmt Config=Openface; Mvmt
Set=Lever; Adj=N; Serial# 706062; Addt'l
Notes=Full plate. "Canton, Ohio" marking on
the movement. "The Dueber Watch Co" on the
dial. Locomotive engraved on back cover.



Quantity: 1

72 HAMPDEN POCKET WATCH - 1897 - 15j - 18s

HAMPDEN POCKET WATCH - 1897 - 15j -
18s; Grade=Dueber Watch Co; Size=18s;
Jewels=15j; Mvmt Config=Hunting; Mvmt
Set=Lever; Adj=N; Serial# 1007572; Addt'l
Notes=Cracks on the dial. Full plate.



Quantity: 1

LOT

73 HAMPDEN POCKET WATCH - 1908 - 17j - 18s

HAMPDEN POCKET WATCH - 1908 - 17j -
18s; Grade=Dueber Grand; Size=18s;
Jewels=17j; Mvmt Config=Openface; Mvmt
Set=Pendant; Adj=Y; Serial# 2455462; Addt'l
Notes=Does NOT wind. Does NOT run. Cracks
and chips on the dial. Hinge in broke on the
swing-out case. Eagle on the back cover.



Quantity: 1

74 ILLINOIS POCKET WATCH - 1874 - 7j - 18s

ILLINOIS POCKET WATCH - 1874 - 7j - 18s;
Grade=Mason; Size=18s; Jewels=7j; Mvmt
Config=Either; Mvmt Set=Key; Adj=N; Serial#
33259; Addt'l Notes="Illinois Springfield Watch
Co" on the dial. No key. Crystal has scratches
and some damage around the rim.



Quantity: 1

75 ILLINOIS POCKET WATCH - 1881 - 11j - 18s

ILLINOIS POCKET WATCH - 1881 - 11j - 18s;
Grade=101 - 5th Pinion; Size=18s; Jewels=11j;
Mvmt Config=Openface; Mvmt Set=Lever;
Adj=Y; Serial# 230524; Addt'l Notes=Adjusted
to Temp. Includes a #2 key.



Quantity: 1

76 ILLINOIS POCKET WATCH - 1882 - 17j - 18s

ILLINOIS POCKET WATCH - 1882 - 17j - 18s;
Grade=Miller; Size=18s; Jewels=17j; Mvmt
Config=Openface; Mvmt Set=Lever; Adj=?;
Serial# 327430; Addt'l Notes=Very Large Case.
Railroad Grade. 5th Pinion.



Quantity: 1

77 ILLINOIS POCKET WATCH - 1882 - 11j - 18s

ILLINOIS POCKET WATCH - 1882 - 11j - 18s;
Grade=2; Size=18s; Jewels=11j; Mvmt
Config=Hunting; Mvmt Set=Lever; Adj=N;
Serial# 364737; Addt'l Notes=Pendant cap is
loose. Minute hand is bent but functioning.
Swing-out movement. Includes key.



Quantity: 1

Pocket Watch Auction - (online-only) 5/16/2020-5/31/2020

LOT #**78 ILLINOIS POCKET WATCH - 1893 - 15j - 18s**

ILLINOIS POCKET WATCH - 1893 - 15j - 18s;

Grade=60; Size=18s; Jewels=15j; Mvmt

Config=Openface; Mvmt Set=Pendant; Adj=?;

Serial# 1185291; Addt'l Notes=Heavy watch.

Large Elk engraved on the back. Private Label

"Josephson - Moline, Illinois" marking on the

dial. It winds and runs for a brief time, then

stops. We will consider this does NOT run.

Quantity: 1

**79 ILLINOIS POCKET WATCH - 1900 - 11j - 18s**

ILLINOIS POCKET WATCH - 1900 - 11j - 18s;

Grade=99; Size=18s; Jewels=11j; Mvmt

Config=Openface; Mvmt Set=Lever; Adj=Y;

Serial# 1512346; Addt'l Notes=American Flag

engraved and painted on back cover. There are

scratches on the case and dent near the crystal

at the 1. Adjusted to temp. Pendant wind.

Quantity: 1

**80 ILLINOIS POCKET WATCH - 1915 - 17j - 18s**

ILLINOIS POCKET WATCH - 1915 - 17j - 18s;

Grade=69; Size=18s; Jewels=17j; Mvmt

Config=Openface; Mvmt Set=Lever; Adj=N;

Serial# 2767714; Addt'l Notes=Very nice nickel

movement.

Quantity: 1

**81 KEYSTONE POCKET WATCH - 1890 - 15j - 18s**

KEYSTONE POCKET WATCH - 1890 - 15j -

18s; Grade=180; Size=18s; Jewels=15j; Mvmt

Config=Hunting; Mvmt Set=Lever; Adj=Y;

Serial# 368393; Addt'l Notes=Raised crystal.

Patented dust cover on the movement.

Quantity: 1

**LOT #****82 LANCASTER POCKET WATCH - 1882 - 13j - 18s**

LANCASTER POCKET WATCH - 1882 - 13j -

18s; Grade=West End; Size=18s; Jewels=13j;

Mvmt Config=Hunting; Mvmt Set=Key; Adj=N;

Serial# 34132; Addt'l Notes=Coin Silver Case.

No key. Watch weighs 6.1oz. Date provided by

seller. Could not lookup actual date.

Quantity: 1

**83 LANCASTER POCKET WATCH - 1886 - 7j - 18s**

LANCASTER POCKET WATCH - 1886 - 7j -

18s; Grade=New Era; Size=18s; Jewels=7j;

Mvmt Config=Hunting; Mvmt Set=Key; Adj=N;

Serial# 95798; Addt'l Notes=Coin silver case.

3/4 plate. No key. Not original case. Back cover

does not clasp tight.

Quantity: 1

**84 NEW YORK STANDARD POCKET WATCH - 1887-94 - 18s**

NEW YORK STANDARD POCKET WATCH -

1887-94 - 18s; Grade=?; Size=18s; Jewels=?;

Mvmt Config=Openface; Mvmt Set=Lever;

Adj=?; Serial# 58923; Addt'l Notes=Raised

crystal, some scratches.

Quantity: 1

**85 OHIO WATCH CO POCKET WATCH - 18s**

OHIO WATCH CO POCKET WATCH - 18s;

Grade=?; Size=18s; Jewels=?; Mvmt

Config=Either; Mvmt Set=Key; Adj=?; Serial#

952406; Addt'l Notes=Coin silver case. No key.

Ohio Watch Co were known to be SWISS fakes

and the serial #s are meaningless.

Quantity: 1

**86 OMEGA POCKET WATCH - 1915 - 18s**

OMEGA POCKET WATCH - 1915 - 18s;

Grade=?; Size=18s; Jewels=?; Mvmt

Config=Openface; Mvmt Set=Pendant; Adj=?;

Serial# 4973351; Addt'l Notes=0.800 Silver

Omega Case.

Quantity: 1



Pocket Watch Auction - (online-only) 5/16/2020-5/31/2020

LOT #**87 PEORIA POCKET WATCH - 1885-95 - 15j - 18s**

PEORIA POCKET WATCH - 1885-95 - 15j -

18s; Grade=Railroad Grade; Size=18s;

Jewels=15j; Mvmt Config=Hunting; Mvmt

Set=Lever; Adj=Y; Serial# 17449; Addt'l

Notes=Fully wound, does NOT run. Crystal is

loose. Visable damage on the dial.

"Non-Magnetic" and "For Railway Service"

markings on the movement. Grid pattern in

middle of movement.

Quantity: 1

**88 ROCKFORD POCKET WATCH - 1876 - 9j - 18s**

ROCKFORD POCKET WATCH - 1876 - 9j -

18s; Grade=?; Size=18s; Jewels=9j; Mvmt

Config=Either; Mvmt Set=Key; Adj=N; Serial#

6835; Addt'l Notes=VERY EARLY

ROCKFORD. "P.Tindolph" and "Vincennes,

Ind" markings on movement.

Quantity: 1

**89 ROCKFORD POCKET WATCH - 1879 - 15j - 18s**

ROCKFORD POCKET WATCH - 1879 - 15j -

18s; Grade=?; Size=18s; Jewels=15j; Mvmt

Config=Either; Mvmt Set=Key; Adj=N; Serial#

57272; Addt'l Notes=Key wind, includes key.

Damage on the dial at 11. Raised crystal with

minor scratches.

Quantity: 1

**90 ROCKFORD POCKET WATCH - 1881 - 11j - 18s**

ROCKFORD POCKET WATCH - 1881 - 11j -

18s; Grade=2; Size=18s; Jewels=11j; Mvmt

Config=Either; Mvmt Set=Lever; Adj=N;

Serial# 117657; Addt'l Notes=Back cover does

not snap closed. Damage to crystal and the dial

but still runs.

Quantity: 1

**LOT #****91 ROCKFORD POCKET WATCH - 1881 - 11j - 18s**

ROCKFORD POCKET WATCH - 1881 - 11j -

18s; Grade=?; Size=18s; Jewels=11j; Mvmt

Config=Either; Mvmt Set=Lever; Adj=N;

Serial# 123937; Addt'l Notes=Nice shape.

Quantity: 1

**92 ROCKFORD POCKET WATCH - 1886 - 11j - 18s**

ROCKFORD POCKET WATCH - 1886 - 11j -

18s; Grade=46; Size=18s; Jewels=11j; Mvmt

Config=Openface; Mvmt Set=Lever; Adj=N;

Serial# 240927; Addt'l Notes=Small chip on the

dial near the lever.

Quantity: 1

**93 ROCKFORD POCKET WATCH - 1887 - 11j - 18s**

ROCKFORD POCKET WATCH - 1887 - 11j -

18s; Grade=67; Size=18s; Jewels=11j; Mvmt

Config=Openface; Mvmt Set=Lever; Adj=N;

Serial# 269044; Addt'l Notes="B. Braunworth --

West Bend, Wis" marking on the dial. Back

cover shows some wear.

Quantity: 1

**94 ROCKFORD POCKET WATCH - 1887 - 9j - 18s**

ROCKFORD POCKET WATCH - 1887 - 9j -

18s; Grade=93; Size=18s; Jewels=9j; Mvmt

Config=Hunting; Mvmt Set=Lever; Adj=N;

Serial# 294707; Addt'l Notes=Full plate gilt

finish movement. Private label "W.J. Wisa &

Son, Chicago" marking on the dial. Wisa was a

watchmaker/jeweler located on 381 West 18th

Street, Chicago, IL.

Quantity: 1

**95 ROCKFORD POCKET WATCH - 1888 - 15j - 18s**

ROCKFORD POCKET WATCH - 1888 - 15j -

18s; Grade=Smelz & Hobbs; Size=18s;

Jewels=15j; Mvmt Config=Hunting; Mvmt

Set=Lever; Adj=Y; Serial# 323406; Addt'l

Notes=Private label "Smelz & Hobbs, Maroa,

Ill" marking on the dial and the movement.

"Extra" marking on the movement. Hairline

crack on dial between 3 & 4. Small dent on



Pocket Watch Auction - (online-only) 5/16/2020-5/31/2020

LOT #

back cover.
Quantity: 1

96 ROCKFORD POCKET WATCH - 1892 - 15j - 18s

ROCKFORD POCKET WATCH - 1892 - 15j - 18s; Grade=85; Size=18s; Jewels=15j; Mvmt Config=Hunting; Mvmt Set=Lever; Adj=?; Serial# 407833; Addt'l Notes=A nice clean Rockford in good running condition with a full plate.



Quantity: 1

97 ROCKFORD POCKET WATCH - 1906 - 17j - 18s

ROCKFORD POCKET WATCH - 1906 - 17j - 18s; Grade=835; Size=18s; Jewels=17j; Mvmt Config=Hunting; Mvmt Set=Lever; Adj=?; Serial# 673667; Addt'l Notes="C.A. McGregor & Sons, Pontiac, Ill." marking on the dial.



Blemish on the seconds dial.

Quantity: 1

98 SETH THOMAS POCKET WATCH - 1888 - 7j - 18s

SETH THOMAS POCKET WATCH - 1888 - 7j - 18s; Grade=11; Size=18s; Jewels=7j; Mvmt Config=Either; Mvmt Set=Key; Adj=N; Serial# 44913; Addt'l Notes=Grade 11, Model 4. Early Seth Thomas. 3/4 plate. Includes key. Hairline cracks on dial. Inside back cover has a sticker stating 10/1/1902 the watch was repaired by Thom. Bruhy, Jeweler, West Bend, Wis.



Quantity: 1

99 SETH THOMAS POCKET WATCH - 7j - 18s

SETH THOMAS POCKET WATCH - 7j - 18s; Grade=Old Eagle; Size=18s; Jewels=7j; Mvmt Config=Hunting; Mvmt Set=Lever; Adj=N; Serial# 564526; Addt'l Notes=DOES NOT WIND, DOES NOT RUN. Missing pin for outer case hinge and will not close, however the dust cover is secure. Manufactured date 1896-1904.



Quantity: 1

LOT #**100 SETH THOMAS POCKET WATCH - 1896 - 7j - 18s**

SETH THOMAS POCKET WATCH - 1896 - 7j - 18s; Grade=36 - New Eagle; Size=18s; Jewels=7j; Mvmt Config=Openface; Mvmt Set=Lever; Adj=N; Serial# 701423; Addt'l Notes=STERLING swing out case. Scratches are evident on the dial. Back case cover shows wear. The production year was provided by seller.



Quantity: 1

101 SETH THOMAS POCKET WATCH - 1896 - 7j - 18s

SETH THOMAS POCKET WATCH - 1896 - 7j - 18s; Grade=37 - New Eagle; Size=18s; Jewels=7j; Mvmt Config=Hunting; Mvmt Set=Lever; Adj=N; Serial# 802729; Addt'l Notes="Thomaston, Conn" marking on the movement.



Quantity: 1

102 TREMONT POCKET WATCH - 1864-66 - 18s

TREMONT POCKET WATCH - 1864-66 - 18s; Grade=?; Size=18s; Jewels=?; Mvmt Config=Hunting; Mvmt Set=Key; Adj=N; Serial# 1634; Addt'l Notes=Coin silver case. Full plate. Includes a #7 key.



Quantity: 1

103 TRENTON POCKET WATCH - 18s

TRENTON POCKET WATCH - 18s; Grade=?; Size=18s; Jewels=?; Mvmt Config=Hunting; Mvmt Set=Lever; Adj=N; Serial# 327865; Addt'l Notes=Full plate. Trenton NJ marking on the movement. Manufactured date 1887-1908



Quantity: 1

104 UNKNOWN POCKET WATCH - 23j - 18s

UNKNOWN POCKET WATCH - 23j - 18s; Grade=?; Size=18s; Jewels=23j; Mvmt Config=Openface; Mvmt Set=Lever; Adj=N; Serial# N/A; Addt'l Notes=This is a FAKE watch with a locomotive on the dial and the movement. 23 Jewel marking on the movement and "Engine Special". It runs good and looks



Pocket Watch Auction - (online-only) 5/16/2020-5/31/2020

LOT #

good, but it lighter than an original.

Quantity: 1

105 WALTHAM POCKET WATCH - 1865 - 7j - 18s

WALTHAM POCKET WATCH - 1865 - 7j - 18s; Grade=Wm. Ellery; Size=18s; Jewels=7j; Mvmt Config=Either; Mvmt Set=Key; Adj=N; Serial# 179946; Addt'l Notes=Includes key.

Back cover has a dent. Two hairline cracks near top of dial.

Quantity: 1

**106 WALTHAM POCKET WATCH - 1867 - 11j - 18s**

WALTHAM POCKET WATCH - 1867 - 11j - 18s; Grade=P.S. Bartlett; Size=18s; Jewels=11j; Mvmt Config=Either; Mvmt Set=Key; Adj=N; Serial# 293802; Addt'l Notes=No key. Chip on the dial at the 12.

Quantity: 1

**107 WALTHAM POCKET WATCH - 1867 - 11j - 18s**

WALTHAM POCKET WATCH - 1867 - 11j - 18s; Grade=P.S. Bartlett; Size=18s; Jewels=11j; Mvmt Config=Either; Mvmt Set=Key; Adj=Y; Serial# 318957; Addt'l Notes=Raised crystal.

No key.

Quantity: 1

**108 WALTHAM POCKET WATCH - 1873 - 11j - 18s**

WALTHAM POCKET WATCH - 1873 - 11j - 18s; Grade=Home Watch Co; Size=18s; Jewels=11j; Mvmt Config=Either; Mvmt Set=Key; Adj=Y; Serial# 675012; Addt'l Notes=No key. Home Watch Co and Boston MA marking on the full plate movement.

Quantity: 1

**LOT #****109 WALTHAM POCKET WATCH - 1873 - 11j - 18s**

WALTHAM POCKET WATCH - 1873 - 11j - 18s; Grade=P.S. Bartlett; Size=18s; Jewels=11j; Mvmt Config=Either; Mvmt Set=Key; Adj=Y; Serial# 683636; Addt'l Notes=Ore silver case.

Very nice raised crystal and dial. The movement is not completely secure in the case.

Quantity: 1

**110 WALTHAM POCKET WATCH - 1873 - 7j - 18s**

WALTHAM POCKET WATCH - 1873 - 7j - 18s; Grade=Home Watch Co; Size=18s; Jewels=7j; Mvmt Config=Either; Mvmt Set=Key; Adj=Y; Serial# 713854; Addt'l Notes=Coin Silver Case. No key. Home Watch Co and Boston MA marking on movement.

Quantity: 1

**111 WALTHAM POCKET WATCH - 1873 - 7j - 18s**

WALTHAM POCKET WATCH - 1873 - 7j - 18s; Grade=Home Watch Co; Size=18s; Jewels=7j; Mvmt Config=Either; Mvmt Set=Key; Adj=Y; Serial# 722004; Addt'l Notes=Coin Silver Case. Includes #5 key. Home Watch Co and Boston MA marking on movement.

Quantity: 1

**112 WALTHAM POCKET WATCH - 1877 - 11j - 18s**

WALTHAM POCKET WATCH - 1877 - 11j - 18s; Grade=Wm. Ellery; Size=18s; Jewels=11j; Mvmt Config=Hunting; Mvmt Set=Lever; Adj=Y; Serial# 1005038; Addt'l Notes=Full plate. American Watch Co marking on the dial.

Quantity: 1

**113 WALTHAM POCKET WATCH - 1881 - 7j - 18s**

WALTHAM POCKET WATCH - 1881 - 7j - 18s; Grade=Broadway; Size=18s; Jewels=7j; Mvmt Config=Either; Mvmt Set=Key; Adj=Y; Serial# 1516358; Addt'l Notes=Coin silver case. Full plate. Includes a #5 key.

Quantity: 1



Pocket Watch Auction - (online-only) 5/16/2020-5/31/2020

LOT #**114 WALTHAM POCKET WATCH - 1883 - 11j - 18s**

WALTHAM POCKET WATCH - 1883 - 11j - 18s; Grade=P.S. Bartlett; Size=18s; Jewels=11j; Mvmt Config=Either; Mvmt Set=Key; Adj=Y; Serial# 2155881; Addt'l Notes=Fully wound, does NOT run. No key. Coin silver case. Back cover does not snap closed.



Quantity: 1

115 WALTHAM POCKET WATCH - 1883 - 7j - 18s

WALTHAM POCKET WATCH - 1883 - 7j - 18s; Grade=1; Size=18s; Jewels=7j; Mvmt Config=Hunting; Mvmt Set=Lever; Adj=N; Serial# 5667970; Addt'l Notes=Very nice ornate coin silver case. There are initials on one side of the case. Very clean full plate movement.



Quantity: 1

116 WALTHAM POCKET WATCH - 1892 - 17j - 18s

WALTHAM POCKET WATCH - 1892 - 17j - 18s; Grade=Appleton, Tracy & Co; Size=18s; Jewels=17j; Mvmt Config=Hunting; Mvmt Set=Lever; Adj=Y; Serial# 5748382; Addt'l Notes=STERLING case shows some wear. Small chips on dial at 5 & 10 along edge. Pendant shows some damage. Nickel finish on movement. Adjusted to Position.



Quantity: 1

117 WALTHAM POCKET WATCH - 1899 - 7j - 18s

WALTHAM POCKET WATCH - 1899 - 7j - 18s; Grade=18; Size=18s; Jewels=7j; Mvmt Config=Hunting; Mvmt Set=Lever; Adj=N; Serial# 9184358; Addt'l Notes=Very clean dial, but missing the seconds hand.



Quantity: 1

LOT #**118 WALTHAM POCKET WATCH - 1900 - 11j - 18s**

WALTHAM POCKET WATCH - 1900 - 11j - 18s; Grade=3; Size=18s; Jewels=11j; Mvmt Config=Openface; Mvmt Set=Pendant; Adj=N; Serial# 9945785; Addt'l Notes=Large viewing window on back cover displaying the damaskeened movement. Crack along the bottom dial from 8 across to the 5 (probably a result of pressing the movement into the case).



Quantity: 1

119 WALTHAM POCKET WATCH - 1906 - 17j - 18s

WALTHAM POCKET WATCH - 1906 - 17j - 18s; Grade=Royal; Size=18s; Jewels=17j; Mvmt Config=Openface; Mvmt Set=Pendant; Adj=Y; Serial# 15046201; Addt'l Notes=Some damage to the bottom of the dial. Swing-out movement. 3/4 plate.



Quantity: 1

120 WALTHAM POCKET WATCH - 1906 - 7j - 18s

WALTHAM POCKET WATCH - 1906 - 7j - 18s; Grade=18; Size=18s; Jewels=7j; Mvmt Config=Hunting; Mvmt Set=Lever; Adj=N; Serial# 15412895; Addt'l Notes=Full plate. Small dent on dust cover. There is a bird engraved on the cover.



Quantity: 1

121 WALTHAM POCKET WATCH - 1913 - 7j - 18s

WALTHAM POCKET WATCH - 1913 - 7j - 18s; Grade=18; Size=18s; Jewels=7j; Mvmt Config=Openface; Mvmt Set=Pendant; Adj=N; Serial# 19198963; Addt'l Notes=Full plate with damaskeened finish.



Quantity: 1

Pocket Watch Auction - (online-only) 5/16/2020-5/31/2020

LOT #**122 ELGIN 8 DAY CLOCK - 1925 - 7j - 37s**

ELGIN 8 DAY CLOCK - 1925 - 7j - 37s;
Grade=8 DAY; Size=37s; Jewels=7j; Mvmt
Config=Openface; Mvmt Set=Pendant; Adj=N;
Serial# 27112444; Addt'l Notes=Does NOT
wind. Does NOT run. Missing seconds hand.
Quantity: 1

**123 ELGIN 8 DAY CLOCK - 1927 - 7j - 37s**

ELGIN 8 DAY CLOCK - 1927 - 7j - 37s;
Grade=8 DAY; Size=37s; Jewels=7j; Mvmt
Config=Openface; Mvmt Set=Pendant; Adj=N;
Serial# 29187093; Addt'l Notes=Ran for a short
time, then stopped. Unable to wind because the
knob is missing from the pendant. Crack on the
crystal near the 5. Consider this As-Is.
Quantity: 1

**124 WALTHAM 8 DAY CLOCK - 7j - 37s**

WALTHAM 8 DAY CLOCK - 7j - 37s;
Grade=8 DAY; Size=37s; Jewels=7j; Mvmt
Config=Openface; Mvmt Set=Pendant; Adj=N;
Serial# 186694; Addt'l Notes=We're a little
confused on this one. The serial# on the
movement is 186,694 which would not be
accurate. Missing the seconds hand on the dial.
Ran for a short time and then stopped. Consider
this As-Is.
Quantity: 1

**125 WALTHAM 8 DAY CLOCK - 1916 - 7j - 37s**

WALTHAM 8 DAY CLOCK - 1916 - 7j - 37s;
Grade=8 DAY; Size=37s; Jewels=7j; Mvmt
Config=Openface; Mvmt Set=Pendant; Adj=N;
Serial# 20674131; Addt'l Notes=Ran for a short
time, then stopped. Unable to wind because the
knob is missing from the pendant. Consider this
As-Is.
Quantity: 1

**LOT #****126 WALTHAM 8 DAY CLOCK - 1917 - 7j - 37s**

WALTHAM 8 DAY CLOCK - 1917 - 7j - 37s;
Grade=8 DAY; Size=37s; Jewels=7j; Mvmt
Config=Openface; Mvmt Set=Pendant; Adj=N;
Serial# 21567654; Addt'l Notes=Crystal is set
in the frame, but does not screw into base.
Crystal is loose. Runs good.
Quantity: 1

**127 WALTHAM 8 DAY CLOCK - 1919 - 7j - 37s**

WALTHAM 8 DAY CLOCK - 1919 - 7j - 37s;
Grade=8 DAY; Size=37s; Jewels=7j; Mvmt
Config=Openface; Mvmt Set=Pendant; Adj=N;
Serial# 22547654; Addt'l Notes=Waltham
Watch Co 8 Days markings on the movement.
Quantity: 1

**128 WALTHAM 8 DAY CLOCK - 1919 - 15j - 37s**

WALTHAM 8 DAY CLOCK - 1919 - 15j - 37s;
Grade=8 DAY; Size=37s; Jewels=15j; Mvmt
Config=Openface; Mvmt Set=Pendant; Adj=Y;
Serial# 23292182; Addt'l Notes=15 Jewels,
Adjusted. Very large dial. Runs good. Crystal
has a chip near the 10. Dial has various
blemishes/chips. Ran for a short time and then
stopped. Consider this As-Is.
Quantity: 1

**129 WALTHAM 8 DAY CLOCK - 1920 - 7j - 37s**

WALTHAM 8 DAY CLOCK - 1920 - 7j - 37s;
Grade=8 DAY; Size=37s; Jewels=7j; Mvmt
Config=Openface; Mvmt Set=Pendant; Adj=N;
Serial# 23886811; Addt'l Notes=Winds, but
won't stay running. We will consider this does
NOT run. As-Is. Waltham Watch Co U.S.A. 8
Days markings on the movement.
Quantity: 1



Pocket Watch Auction - (online-only) 5/16/2020-5/31/2020

LOT #**130 BALL OFFICIAL RR STANDARD WRIST WATCH**

BALL OFFICIAL RR STANDARD WRIST WATCH - Addt'l Notes=Does not run. Case #494906. Case engraving "Frank L. Zelko in appreciation of 45 years of loyal service. E.J. & E. RY. Co. 1965". c Leather strap is partially torn.



Quantity: 1

131 BULOVA 30 JEWELS WRIST WATCH

BULOVA 30 JEWELS WRIST WATCH - Addt'l Notes=Bulova 30 Jewels Self Winding Wristwatch. Runs. Stainless steel case marking #D30144. We did NOT remove the case to inspect the movement.



Quantity: 1

132 GRUEN PRECISION WRIST WATCHES

PAIR OF GRUEN PRECISION WRIST WATCHES - Addt'l Notes=Pair of Gruen Precision Wrist Watches. The 17 Jewels Autowind with the date dial runs. The other watch with the seconds dial does NOT run. We did NOT remove the cases to inspect the movements.



Quantity: 1

133 PHINNEY-WALKER TRAVEL ALARM CLOCK

PHINNEY-WALKER TRAVEL ALARM CLOCK - Addt'l Notes=Works. 3"x3" Brass & leather casing doesn't fully close. Missing parts include: outer crystal, two dials on the rear to set the alarm and time. Inside back of clock reads "Made Exclusively for Phinney Walker In Germany".



Quantity: 1

LOT #**134 3 - SIZE 0s POCKET WATCH CASES**

Qty 3 - SIZE 0s POCKET WATCH CASES
Quantity: 1

**135 5 - SIZE 16s POCKET WATCH CASES**

Qty 5 - SIZE 16s POCKET WATCH CASES
Quantity: 1

**136 8 - SIZE 18s POCKET WATCH CASES**

Qty 8 - SIZE 18s POCKET WATCH CASES
Quantity: 1

**LOCAL PICK UP AND SHIPPING AVAILABLE.**

Everything is sold "AS IS/WHERE IS" with no warranties, representation or guarantees expressed, implied or otherwise given. All sales are final. Conditions of Items Sold: a) All information is believed to be accurate, but the auction company shall not be responsible for the correct description, authenticity, genuineness of or defect in any lot, and makes no warranty in connection therewith. No allowance will be made or sale set aside on account of any incorrectness, error in cataloging or any imperfection not noted. No deduction will be allowed on damaged articles as all goods being exposed for public exhibition are sold "as is" and without recourse.

Richard A. Olson & Associates retains the right to govern goods and services sold to clients and to maintain the level and integrity of our business. RO & Assoc has the right to terminate the auction at any time; withdrawal from sale of any item; to sell at this auction items not listed; to group one of more lots into one or more selling lots or to subdivide into two lots or more selling lots. The auction company also reserves the right to sell all of the items listed in bulk.

Payment:

- 1) All payments will be required to be paid for with the credit card on file after auction is complete.
- 2) 10% Buyer's Premium rate will be charged to all winning bids in this auction.
- 3) Buyer specifically waves the right to dispute or deny payment for any purchases made with a credit card.
- 4) No items will be removed until they have been paid for. Purchaser is responsible for removal of all purchased goods.
- 5) All items must be picked up in the allotted time following the

Pocket Watch Auction - (online-only) 5/16/2020-5/31/2020

auction unless arrangements were made with the auction company prior to bidding. If items are not removed by this time they will be forfeited and/or sold for storage. This does not apply if the buyer chooses to have the items shipped.

Loading & Removal: RO & Assoc does not lend, lease, or borrow any equipment, nor deliver sold goods. Buyer is responsible for their own removal of all items. Please bring any packing material and boxes that you may need. Please bring assistance to move heavy items to your vehicle and any tools for dismantling. Persons removing goods assume all risks of damage or loss to person and property and specifically release and indemnify the Auction Company from liability therefore. Neither the Auction Company nor his principal or seller shall be liable by reason of any defect in or condition of the premises in which the sale is held.

Delinquent Accounts: The bidder that has not paid for, or has not removed their items from the auction site, will be subject to the cost of storage, trucking, re-sale, deficiency balances, collection fees, and any legal fees for recouping a loss due to the bidder's negligence.

Reserves: Any and all items that RO & Assoc agrees to sell are subject to a reserve as per Illinois State Auction Law.

Requiring a credit card to register ensures that you are not bidding against people who have no intention of purchasing the items. We are fully PCI complaint and have monthly security scans through our provider, First Data, and our auction software company as well. Our software company provides the back-end to more auction companies than any other provider. We are also licensed with the State of Illinois Department of Business and Professional Regulation under Auction Business License #444.000512, Auctioneers Richard A. Olson License #440.000585 and Erik C. Olson License #441.001909. Providing the highest level of Professional Auctioneering Service for the past 50 years.
