

# ONLINE ONLY LAWN SERVICE AUCTION

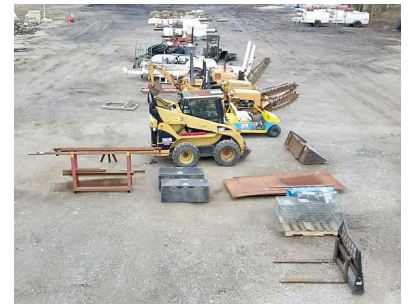
LAWN MOWERS - GOLF CART -  
DUMP TRUCKS - LAWN ACCESSORIES  
AND EQUIPMENT - IRRIGATION EQUIPMENT



*Lawn Service Company Is Located At*

*7450 Hill Avenue, Holland, Ohio 43528*

**BIDDING ENDS: WEDNESDAY, APRIL 22, 2020 at 11:00 am**



**REGISTER AND BID ONLINE AT  
[www.PamelaRoseAuction.com](http://www.PamelaRoseAuction.com)**



# Inventory List

ONLINE BIDDING ENDS:  
WEDNESDAY, APRIL 22, 2020 AT 11:00 AM

#	Title	Description
820	GCV 190 Honda Lawn Mower.....	Working Condition
821	HRX 217 Honda Lawn Mower.....	Working Condition, 2 Bags
822	18 HP 36" Twin Blade Bunton Stand Behind Mower.....	Working Condition
823	Kawasaki 900 Hydrostatic Bed Shaper.....	Working Condition
824	Honda HRX217 Mower.....	Working Condition
825	Honda GVC 190 Mower.....	Working Condition
826	Kawasaki 36" Twin Blade Walk Behind Mower.....	Working Condition
827	Lesco Commercial Slice Seeder.....	Kawasaki FE250 8.0 HP, Working Condition
828	Honda GX 270 Billy Goat Blower.....	Working Condition
829	Honda GX 270 Billy Goat Blower.....	Working Condition
830	Honda GX 390 Force 13 Billy Goat Blower.....	Working Condition
831	Extension Cords.....	Not Tested
832	Floor Jack.....	Stuck In Up Position
833	Honda FRC 100 Roto-Tiller.....	Working Condition
834	Wright Stander Quad Leveler.....	Stand On, Working Condition, Kawasaki 751V 27.0
835	Wright Stander WS 52.....	Kawasaki Engine FH 680 V, Extra Used Starter
836	Lot of Various Hard Hats with Jumbo Yard Pan	
837	Sears Craftsman Drill Press.....	Working Condition
838	Cat Pump with Briggs and Stratton Engine Power Washer.....	SF30GH, 5HP, Working condition
839	(3) Igloo Beverage Coolers.....	5 Gallon
840	(3) Igloo Beverage Dispensers.....	5 Gallon
841	Gridiron Custom Tool Storage with Miscellaneous	
842	IMER Masonry 350 Cutter on Stand.....	Gas Powered Honda GX 160, Working Condition, No Blade.
843	Pittsburgh Automotive 2 Ton Engine Hoist.....	Working Condition
844	COATS Rim Clamp 5050AX.....	Working Condition
845	Trasmission Differential Jack.....	750 Capacity
846	Tall Metal Jack Stand	
847	Milwaukee 14" Abrasive Cut-Off Machine.....	Working Condition
848	Honda HRX 217 Mower.....	Parts Only
849	Tanaka TLE-600 Edger.....	Working Condition
850	7.25" Skilsaw Prazi Beam Cutter.....	Working Condition
851	750 Pound Engine Stand.....	360 Degree Turning
852	Walk Behind Mower Steel Grass Catcher	
853	Walk Behind Mower Steel Grass Catcher	
854	Walk Behind Mower Steel Grass Catcher	
855	Walk Behind Mower Steel Grass Catcher	
856	Walk Behind Mower Steel Grass Catcher	
857	Walk Behind Mower Steel Grass Catcher	
858	Walk Behind Mower Steel Grass Catcher	
859	Walk Behind Mower Steel Grass Catcher	
860	Pallet of Miscellaneous Snow Plow Parts.....	Includes Salt Spreader with Vibrator Kit
861	Snow Plow Controller with (3) Motors.....	New
862	LED Mini Light Bar and LED Light Bar.....	New
863	(3) Jumper Cables.....	(2) 16'
864	Stihl Trimmer Blades.....	Different Sizes, New and Used
865	Lot of Prebent Pipe	
866	Box of Beacons and Strobes.....	Working Condition
867	(2) Spare Tire Carrier, (1) Hitch Extender.....	New
868	(18) Boxes of 2" Muffler Clamps.....	Includes U-Bolts and Miscellaneous Size Clamps
869	HVAC Hoses	
870	Fire Extinguisher, First Aid Kits, Case of Saline, (2) Cases of Foam Ear Plugs.....	1" Vinyl Blind Included
871	Stihl Backpack Magnum BR600 Blower.....	Parts Only
872	Stihl Magnum BR600 Backpack Blower.....	Parts Only
873	Stihl Magnum BR600 Backpack Blower.....	Parts Only
874	Stihl Magnum BR600 Backpack Blower.....	Parts Only
875	Stihl Magnum BR600 Backpack Blower.....	Parts Only
876	Pallet of Blower Parts.....	Containing (2) Stihl Magnum BR600 Blowers and Miscellaneous
877	(4) Handi-Trays	
878	(2) Rain Bird ESPLXD Controller Stations.....	(1) New, (1) Used
879	I-CORE Station Controller.....	New
880	Pick Axes, Axes, Sledge Hammer	
881	Toro Vision II Plus Controller.....	New
882	Hunter Pro C Controller.....	New
883	(2) Fish Tapes.....	Gardner Bender
884	Coke Vending Machine.....	Model C7-392, Working Condition, Outdoor Unit, Includes Spare Coin Changer
885	325D Grasshopper Mower.....	Working condition, 4362.5 Hours, Diesel
886	322D Grasshopper Mower.....	Diesel, Working Condition, 8,438 Hours
887	725D Grasshopper Mower.....	Diesel, Working Condition, 1,991 Hours
888	725D Grasshopper Mower.....	Diesel, Working Condition, 1,436 Hours
889	Heated Electronic Controller for Blower, Grasshopper Snowblower Hood.....	Fits 725D Grasshopper
890	42" Snowblower for 725D Grasshopper.....	2 Tires Included

# Inventory List

ONLINE BIDDING ENDS:  
WEDNESDAY, APRIL 22, 2020 AT 11:00 AM

891	UDOR Kappa 43 GR200 Gallon Sprayer with Electric Reel.....	Honda GX 160 Pull Start Engine, Working Condition
892	Tractor Supply Pick-Up Utility Box.....	41" Wide
893	RD 7 Wacker Vibrating Roller .....	Working Condition
894	(4) Steel Spades	
895	(3) Steel Spades	
896	(4) Push Brooms	
897	(3) Stompers	
898	Large Lot of Shovels	
899	Large Lot of Spades	
900	Post Hole Digger	
901	Lot of Trench Diggers	
902	Plastic Pitch Forks and Shovels	
903	Log Roller	
904	(5) Steel Rakes	
905	Hoes, Edgers, Shovels	
906	Steel Shovels, Steel Spades	
907	(5) Steel Spades	
908	Concrete Smoothers with Plastic Shelf Unit	
909	Large Lot of Snow Shovels	
910	Stihl PS 90R Weed Wacker .....	Working
911	Stihl FS 90R Weed Wacker .....	Working
912	Stihl PS 90R Weed Wacker .....	Working
913	Stihl PS 90R Weed Wacker .....	Working
914	Stihl Edger .....	Working
915	Stihl Magnum BR600 Backpack Blower.....	Working
916	Stihl Magnum BR600 Backpack Blower.....	Working
917	Stihl Magnum BR600 Backpack Blower.....	Working
918	Stihl Gas 24" Hedge Trimmer.....	Working
919	Stihl Gas 20" Hedge Trimmer.....	Working
920	Pallet of Tires, Rims	
921	(5) Diesel Cans	
922	(14) Gas Cans	
923	55 Gal. Drum Roller	
924	(5) Cases Rainbird Controllers .....	4 In Each Case, ESP4ME, New
925	(23) Rain Bird Controllers .....	New, #ESP4ME
926	Water Sprinklers with Detachable Spine .....	In Ground and Above Ground Sprinklers
927	Blazing Self-Tapping Saddle Tees.....	#BS 9000, Approximately (5) Cases, New
928	Rain Bird and Toro Nozzles.....	(6) Boxes
929	Toro Precision Soil Moisture System.....	(6) Total, New.
930	¾ Swing Joints	
931	3" PVC Tees, Couplers, Bushings.....	40's, 45's
932	4" PVC Elbows, Coupling	
933	PVC Valves, Connectors	
934	2.5" PVC, Elbows, Ball Valves, Connectors	
935	1.25" PVC Connectors	
936	2" PVC Connectors, Reducing Tees, Pipe Fittings	
937	1.5" PVC Connectors, Tee Sockets	
938	1" Tee Sockets, Elbow Sockets, Coupling Socket, Male Adaptor	
939	1" PVC Tees, Couplers, Bushing, Threaded Couplers, Adaptors .....	90, 45 Degrees, Caps
940	1" Poly Fitting Assortment	
941	1.25 Poly Coupling / Fittings	
942	(3) Boxes of Assorted Poly.....	Assortment of Sizes and Shapes
943	1.5" Assorted Poly Fittings, Tees.....	Miscellaneous Fittings
944	Tractor PTO's, Screw Driver	
945	(4) Boxes Poly, PVC Fittings, Elbows, Tees.....	Miscellaneous Sizes and Shapes
946	(7) Boxes Miscellaneous PVC, Poly Fittings.....	SBE 050, SBE 075, Poly Slip Fittings, Drip Fittings, Drip T, PVC Slip Fit, Box of Miscellaneous
947	(3) Wood Shelving .....	Contents NOT INCLUDED
948	Large Lot of Lopers	
949	Lot of Hedge Trimmers	
950	(3) Lopers	
951	2000 Ford F-450 Super Duty Dump Truck .....	Crew Cab, Dumper, 11,000 Pounds Rear Capacity, GVWR 15,000 Pounds, Power Stroke Diesel V8, 175,268 Miles, Rust And Minor Body Damage Present, Tandem Back Wheels
952	2000 Ford F-450 Super Duty Dump Truck .....	Crew Cab, Dumper, 11,000 Pounds Rear Capacity, GVWR 15,000 Pounds, Power Stroke Diesel V8, 156,036 Miles, Rust And Minor Body Damage Present, Side Access Cargo Area In Dumper, Tandem Back Wheels
953	2004 Ford F-550 XLT Super Duty Dump Truck.....	Power Stroke V8 Turbo Diesel, 2 Door, GVWR 17,500 Pounds, Rear GAWR 13,500 Pounds, 10' The Boss Foldable Snow Plow, Light Bars, Tandem Rear Wheels, 55,000 Miles, Wear Present
954	2008 F250 XL Super Duty Pick Up Truck .....	4x4, 261,500 Miles, Bed Protector, 2 Door, Wear Present
955	2009 F250 XL Super Duty Pick Up Truck.....	180,462 Miles, Extended Cab, 4x4, Wear Present
956	2005 F250 XLT Super Duty Pick Up Truck .....	Beacon, Diamond Plate Utility Boxes, 243,329 Miles, Extended Cab, Protector Steel Grating Across Back Window, Bed Protector, Wear Present
957	2003 ISUZU NPR HR Box Truck.....	18' Box, 221,320 Miles, Crew Cab, Tandem Wheels, Box Complete With Shelving, Great For Carpentry, Wear Present
958	2014 22' Millennium Enclosed Car Trailer .....	Swing Down Back Door, Side Entrance Door, Model CH820

# Inventory List

ONLINE BIDDING ENDS:  
WEDNESDAY, APRIL 22, 2020 AT 11:00 AM

959	2007 24' Haulmark Enclosed Trailer .....	Swing Down Back Door, Side Entrance Door, Wear Present
960	2014 22' Millennium Enclosed Trailer .....	Swing Down Back Door, Side Entrance Door, Wear Present, Model CH820
961	Forks for Skid Steer .....	Fork 4' In Length
962	Lot of Live Animal Traps .....	(9) Traps, Various Sizes
963	Steel Mesh Sheets And Sheet Steel .....	Various Sizes
964	(2) Tractor Supply Pick Up Bed Boxes .....	Damage and Rust Present
965	Steel Rack with Steel .....	Mesh, Bars and Rods
966	CAT 262B Two Speed Front Loader.....	83 Hours, Working Condition
967	Two Seat Golf Cart.....	Needs Batteries, Working Condition, Charger Included
968	CASE Trencher.....	Model MAXI-C, Includes P75 Maxi Plow, 902 Hours
969	CASE Trencher.....	Model MAXI, 2,861 Hours, Includes P75 Maxi Plow
970	CASE 360 Trencher .....	SD 100 Backhoe, 1,168 Hours, Working
971	25' Keller Fiberglass Extension Ladder.....	Wear Present
972	Werner 8' Foldable Ladder.....	Wear Present
973	Werner 12' Fiberglass Ladder and 10' Metal Ladder.....	Wear Present
974	20' Skid Steer Trailer .....	(2) Swing Down Car Ramps, Metal With Wood Deck, Wear Present
975	Pallet of Pulling Blades	
976	(2) Jackson Pro Metal Wheel Barrows .....	Wear Present
977	(3) Jackson Pro Metal Wheel Barrows .....	Wear Present
978	55 Gallon Drum Dolly / Ball Cart .....	Wear Present
979	55 Gallon Drum Dolly / Ball Cart .....	Wear Present
980	12' Aluminum Rowboat .....	Paddles and Anchor
981	Lot of PVC and Poly Irrigation Supplies.....	Tubing and Connectors
982	Lot of Pond Equipment.....	Working Condition
983	Metal Drum Roller .....	18" Diameter
984	Weld Tester .....	Incomplete
985	ROPS with Wire Holder .....	Fit Most Trenchers, Spool Holder
986	(2) Trailer Hitches.....	2.5" Balls, One Marked 8 Ton
987	(4) Trailer Hitches.....	2.5" Balls
988	(2) Trailer Hitches and (2) Balls.....	(3) 2.5", (1) 2" Balls
989	(2) Curt Receiver, (3) Hiches, (3) 4-Way Tire Iron, Bulldog.....	2", 2.5" Balls
990	(2) Jack Hammers with Accessories	
991	Trailer Hitch Side Drop Gate For Riding Lawnmower	
992	PTO Driven Pull Behind Mower .....	Working Condition
993	Woods PTO Driven Power Rake Pulverizer .....	Model TPR7200, Working Condition
994	Lot of Vinyl Rubber Hoses	
995	Lot of Sign Posts	
996	550 Gal. Upright Tank	
997	(2) Plastic Storage Tanks .....	100 and 30 Gallon
998	Large Fiberglass Dry Box	
999	Tractor Supply Pick Up Storage Bin	
1000	Lot of Irrigation Tubing, Mat, Caution Hoses	
1001	Pallet of Chicken Wire	
1002	Large Metal and Concrete Drain .....	Marked "Drains to Waterways", Metal Top 25" x 25"
1003	Metal Drain Pipe .....	3"
1004	(2) Pallets Standing Sprinklers with Hoses	
1005	(10) Hazard / Caution Cones	
1006	Large Lot 1" PVC Tubing .....	Approximately 20' Each
1007	Large Lot 1.5" PVC Tubing .....	Approximately 20' Each
1008	Pallet Stone	
1009	(2) Pallet Patio Concrete Squares	
1010	Pallet Pavers	
1011	Pallet Concrete / Stone Squares	
1012	Pallet of Stone	
1013	Pallet of Stone	
1014	Pallet of Stone	
1015	Pallet of Stone	
1016	Pallet of Stone	
1017	Pallet of Stone	
1018	Pallet of Stone	
1019	Pallet of Stone	
1020	Pallet of Stone	
1021	Pallet of Stone	
1022	Pallet of Stone	
1023	(3) Pallet of Pavers	
1024	(2) Pallets of Pavers	
1025	Yard Snow Plow Poles	
2000	Wire Tracer.....	Working Condition
2001	Wire Tracer.....	Working Condition
2002	Wire Tracer.....	Working Condition
2003	Wire Tracer.....	Working Condition
2004	Spot Welder .....	Like New
2005	Skid Steer Bucket	



# Inventory List

ONLINE BIDDING ENDS:  
WEDNESDAY, APRIL 22, 2020 AT 11:00 AM



## QUESTIONS? CALL 419-865-1224

**Preview and Removal: If under any restrictive Health Order, please visit our website for updates.**

### PREVIEW:

Saturday, April 18, 2020 from 10:00 am - 2:00 pm.

*By Appointment Only; Contact Carson Helminiak at 419-349-4854; carson@pamelaroseauction.com.*

### REMOVAL:

Friday, April 24, 2020 and Saturday, April 25, 2020 from 9:00 am - 5:00 pm.

*By Appointment Only; Contact Carson Helminiak at 419-349-4854; carson@pamelaroseauction.com.*

### TERMS AND CONDITIONS:

Terms: Payment via Credit Card.

13% Buyer's Premium will be added to the final hammer price.

View the Complete Terms and Conditions Online.



**Pamela Rose**  
AUCTION COMPANY, LLC

Carson Helminiak, Auctioneer, SRS  
Pamela Rose, Auctioneer, CAI, AARE

[www.PamelaRoseAuction.com](http://www.PamelaRoseAuction.com)

STAY UP-TO-DATE ON SOCIAL MEDIA!



©2020 Pamela Rose Auction Company, LLC