

**REAL ESTATE PHOTOS**



# 119+/- ACRE OPERATING GOLF COURSE AUCTION

**Sleepy Hollow Golf Course**

6029 East State Route 101, Clyde, Ohio 43410

**Saturday, November 16, 2019**

REAL ESTATE SELLS AT 11:00 AM | PREVIEW AND REGISTRATION BEGINS AT 9:30 AM

GOLF COURSE EQUIPMENT, PRO SHOP, AND KITCHEN SELLS IN BULK AT 11:30 AM

**OPERATING GOLF COURSE FOR THE PAST 58 YEARS IS SELLING AT**

# AUCTION



Live Onsite Auction at 11:00 am of the Sleepy Hollow Golf Course that has been in operation since 1961. Property has 119+/- acres with pro shop, maintenance buildings, (2) houses (1 used for storage), and (2) barns believed to be from the 1860's. Other possible uses include farm, nature preserve, and possible home sites.



## PROPERTY FEATURES

Operating Golf Course with Clubhouse  
Several Outbuildings  
(2) Barns - May Have Valuable Timber  
Pro Shop

## PARCEL INFORMATION

01-03-00-0006-00 - Half Year Tax: \$1,027.12  
01-04-00-0008-00 - Half Year Tax: \$4,692.33  
01-04-00-0008-01 - Half Year Tax: \$999.03  
01-04-00-0015-00 - Half Year Tax: \$3,504.70



**REAL ESTATE TERMS and CONDITIONS:** \$10,000 Deposit must be presented at time of registration for auction in form of cashier's check or personal check made payable to Greater Metropolitan Title. Balance due at closing by Friday, December 27, 2019. If registrant is last bidder, the check will be deposited into Greater Metropolitan Title's escrow account and credited to Buyer at closing. If Buyer fails to close per terms of contract, the deposit is non-refundable. A 10% Buyers Premium will be added to the last bid to establish the final contract price. Seller will furnish a guaranteed certificate of title at closing at title company. Taxes pro-rated. All information in this brochure was derived from sources believed correct, but is not guaranteed. All property dimensions are only approximations. Buyers shall rely entirely on their own information, judgment, and inspection of property and record. Buyer may bring a home inspector to inspect the property during the preview time. Auctioneer and assistants are seller's agent. Auction will be conducted, rain or shine. Any other terms or conditions will be announced the day of the auction and will take precedence over printed matter. **Privacy Policy and User Agreement:** To view our complete Privacy Policy and User Agreement, please visit our website at [www.PamelaRoseAuction.com](http://www.PamelaRoseAuction.com).

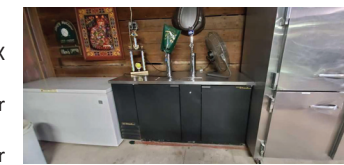
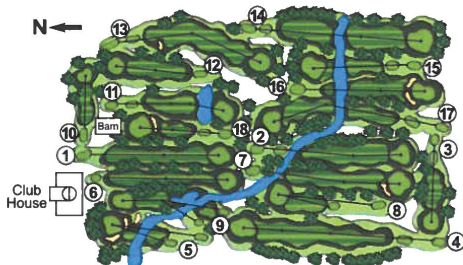
**Live Onsite on Saturday, November 16, 2019  
6029 East State Route 101, Clyde, Ohio 43410**

**GOLF COURSE PERSONAL PROPERTY TO BE SOLD IN BULK AT**

# AUCTION

Personal Property selling at 11:30 am includes the golf course equipment, pro shop, and the kitchen to be sold in bulk.

- |   |                                     |  |   |
|---|-------------------------------------|--|---|
| Ford 4110 Tractor                               | Oil Drums                           | Coil Wire  | Jacobsen Turfcut T423D                      |
| Progressive 7 Blade Mower                       | Walk In Cooler                      | Fairway Gangs  | Jacobsen Greens King 4 Verticutter          |
| Jacobsen HR-5111 4WD                            | True Refrigerator                   | Toro Sandpro Model 14                                      | Foley Relief Grinder Model 388              |
| Ford Backhoe And Front Loader                   | Push Brooms                         | Billy Goat Push Behind Blower                              | Ideal Model 900 Grinder                     |
| Jacobsen LF-100 Diesel                          | Lockers                             | Snapper Mower  | Hand Push Greens Mower                      |
| Countryline 28 Ton Log Splitter                 | Picnic Tables                       | Ryan GA-30 Plugger   | Jacobsen LF-100                             |
| Scott's Push Mower                              | True Portable Coolers               | Red Rider  | Extra Reels For Jacobsen Tee Mowers         |
| Shop Vac 16 Gallon                              | 3 Keg Cooler                        | Wheel Barrow   | Greens King Extra Reels                     |
| Scott's Professional Seeder                     | Whirlpool Chest Freezer             | Ryan Jr Sod Cutter   | Jacobsen Sand Reel Mower                    |
| Toro Electric Snowblower                        | Heavy Duty Work Tables              | Ryan 10 HP Overseeder                                      | Jacobsen T Mower                            |
| 2 Ton Hydraulic Foldable Shop Crane             | Lasko 32" Heavy Duty Pedestal Fan   | Ariens Rototiller  | Huskee 17 Cu Foot Cart                      |
| Jacobsen Greens Kings 4 (4)                     | Large Grills                        | Sprayer  | Scott's Fertilizer Drop Spreader            |
| Bearings / Seals / Weed Whips / Hydraulic Press | Bar And Barstools                   | Meter Mati Top Dresser Self Propelled                      | Cushman Jr 4 Wheel Truckster                |
| Hand Saws / Protective Helmets                  | True Sliding Glass Door Fridge      | Graden De-thatchers  | Fairway Plugger                             |
| Chains / Blades / Portable Generator            | Ice-O-Matic Ice Machine             | Woven Wire Fence Stretcher                                 | Jacobsen F10 Fairway Mowers                 |
| Wrenches / Vicegrip / Grinders                  | Superior 3 Keg Draft Beer Cooler    | SDI 150 Gallon Tank  | Top Dressing Brooms                         |
| Craftsman Lights                                | Black True Cooler                   | Cushman Jr Turf-Truckster Cab                              | Drainage Supplies                           |
| Craftsman Toolboxes Filled with Tools           | Cash Register                       | Turfco Top Dresser Model 12F12D                            | Loadster 1600 Dump Truck (Not Street Legal) |
| Cabinets Filled with Equipment Parts            | Golf Club Bunk Rack                 | Cushman Truckster Jr. No Cab                               | Whirlpool Freezer                           |
| Mower Tires                                     | Robertshaw Griddle                  | Drum Aerator   | Kenmore Freezer                             |
| Manual Tire Changer                             | Deep Fryer                          | Ferguson TO30  | Jacobsen LF 1440 Fairway Mower              |
| 5 HP Air Compressor                             | Cushman Truckster with Sprayer      | Toro Irrigation Supplies                                   |   |
| Lincoln Electric Welder SP-170-T                | Broan Hood                          | Stihl T5460 Chopsaw  |   |
| Wood Burning Stove                              | Superior Refrigerator               | Delta 12" Mittersaw 36-230                                 |   |
| Craftsman 15" Drill Press 1 HP                  | McCall Refrigerator                 | Honda Water Pump Model WP30X                               |   |
| Mower Reel Holders Portable Rack                | McCall Freezer (Does Not Work)      | 12 Gallon Shop Vac   |   |
| Nearly Reel Mower Grinder                       | Bunn Coffee Maker                   | 40 HP Sandusky Electric Motor Centrifugal Motor 3 Phase    |   |
| Model 50 Ideal Bed Knife Grinder                | Hoshizaki Refrigerator              | 25 HP Sandusky Electric Motor Backup For Main Pump Station |   |
| Delonghi Heater                                 | Whirlpool Stove                     | Work Benches   |   |
| Miscellaneous Hand Tools                        | Hobart Meat Slicer                  | Spare Ball Washers   |   |
| Parts Washer                                    | (2) Whirlpool Washers And Dryers    | Stihl Chainsaws  |   |
| Yamaha Golf Carts                               | Two Door True Freezer               | Irrigation Hoses   |   |
| Bag Boy Push Carts                              | 3 Well Sink                         | Sanders  |   |
| Cushman Jr Turf Truckster                       | Lely Fertilizer Spreader Tow Behind | Toro Irrigation Pedestal                                   |   |
| Husqvarna Mower / Heaters / Weed Whip           | Jacobsen B-40 Blower PTO Driven     | Cart Seat Cushions   |   |
| Fuel Tanks                                      | Irrigation Supplies And Drainage    | Golf Cart Parts / Frames                                   |   |
|   | Clay Drainage Tile                  | Electric Pressure Washer                                   |   |
|   | Blackhawk Floor Jack                | Land Maintenance Supplies                                  |   |
|   | Rear Blade Soil and Stone Leveler   | Plastic Roller   |   |
|   | Jacobsen Seeder                     |  |   |
|   | Post Hole Digger                    |  |   |
|   | Cushman Core Harvester              |  |   |



## PERSONAL PROPERTY TERMS AND CONDITIONS:

**TERMS:** \$7,500 down day of auction with check or cash and balance within 5 business days. View the complete terms online. List is subject to change.  
**BUYERS PREMIUM:** 10% buyers premium will be added to establish the final price.  
**REMOVAL:** Removal upon payment in full. Buyer to make appointment with owner within 15 days of auction.

VIEW MORE DETAILS ONLINE AT [WWW.PAMELAROSEAUCTION.COM](http://WWW.PAMELAROSEAUCTION.COM)

**OFFICE: 419-865-1224 | 877-462-7673**