

BROWN

-Honda-



ONLINE AUCTION

LIFTS, AUTO EQUIPMENT, METAL SHELVING, HEATING SYSTEM

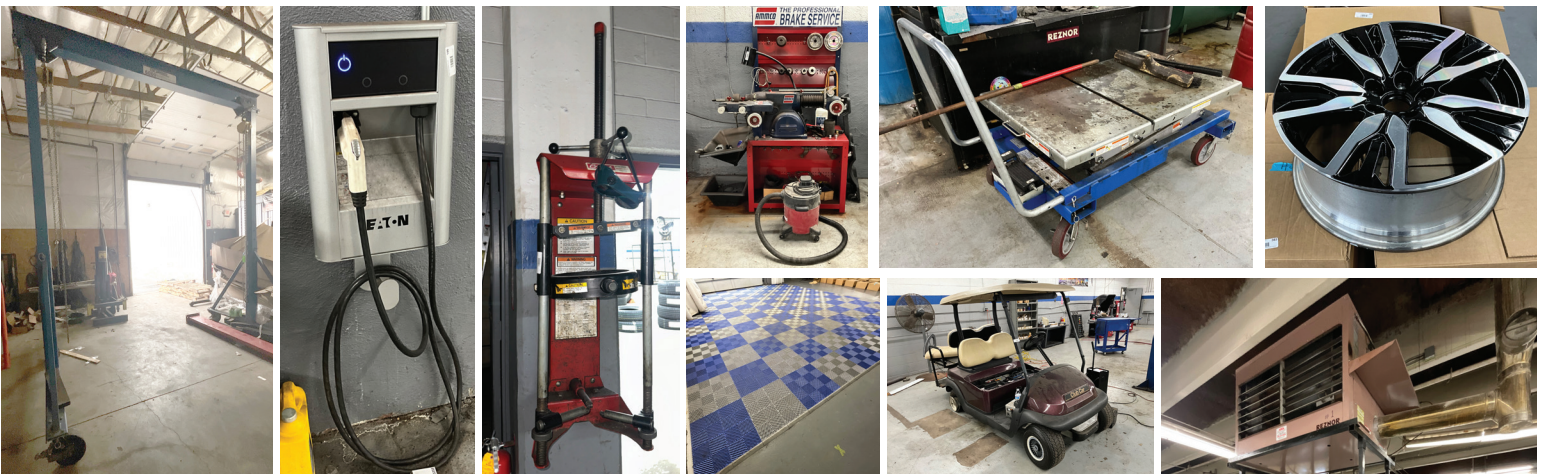
Auto Dealership Is Relocating To Their New Facility



LOCATION: 5625 Central Avenue, Toledo, Ohio 43615

PREVIEW DATES AND TIMES:

Tuesday, February 27, 2024 from 11 am - 1 pm and Wednesday, February 28, 2024 from 11 am - 1 pm



Online Bidding Ends: **Monday, March 4, 2024 at 10:00 am**

Inventory List

ONLINE BIDDING ENDS:
MONDAY, MARCH 4, 2024 AT 10:00 AM

#	Title	Description
1.....	Building 1 Showroom 1 B1SR1- (3) Sections of Office Partitions.....	Total length: 124 ft, Section Dimensions: 124"X72"X2.5", 75"X72"X2.5", 75"X72"X2.5", 28"X72"X2.5
2.....	B1SR1- (2) Rolling Office Chairs.....	(1) seat back is ripped
3.....	B1SR1- 2 Drawer Filing Cabinet	
4.....	B1SR1- 2 Drawer Filing Cabinet	
5.....	B1SR1- Trash Can.....	Top does not close
7.....	B1SR1- Hon 2 Drawer Filing Cabinet	
8.....	B1SR1- Hon 2 Drawer Filing Cabinet With Key	
9.....	B1SR1- Plastic Trash Can	
10.....	B1SR1- (3) Stationary Office Chairs	
11.....	B1SR1- (2) Stationary Office Chairs	
12.....	B1SR1- (3) Rolling Office Chairs	
13.....	B1SR1- Sharp 38" Television.....	Bring socket/screwdriver set for removal
14.....	B1SR1- 2-Piece Desk, Rolling Office Chair, Keyboard, and Mouse.....	66"X30", 48"X24"
15.....	B1SR1- 2-Piece Desk, Stationary Office Chair, Monitor, Keyboard, and Mouse	66"X30", 48"X24"
16.....	B1SR1- 2-Piece Desk, Rolling Office Chair, Monitor, Keyboard, and Mouse	66"X30", 48"X24"
17.....	B1SR1- 2-Piece Desk, Rolling Office Chair, Pair of Computer Speakers, and 2 Drawer Filing Cabinet	66"X30", 48"X24"
18.....	B1SR1- 36" Round Table.....	41" Tall
19.....	B1SR1- Vacuum Cleaner, (2) Computer Monitors, Roof Rack for a Vehicle	
20.....	B1SR1- 2-Piece Desk, Rolling Office Chair, Monitor, and 2 Drawer Filing Cabinet	66"X30", 48"X24"
21.....	B1SR1- 2-Piece Desk, Stationary Office Chair, 2 Drawer Lateral Filing Cabinet, Floor Mat, and Coffee Maker	66"X30", 48"X24"
22.....	B1SR1- Glass Office Door	36"X79", buyer responsible for removal
23.....	B1SR1- (2) Bag Chairs	No bags
24.....	B1SR1- Hisense 42" Television	Socket/Screwdriver needed for removal
25.....	B1SR1- (2) Stationary Office Chairs	
26.....	B1SR1- Upholstered Sofa (Pleather).....	71" wide, 30" deep
27.....	B1SR1- 8' Artificial Christmas Tree and Decorations	
28.....	Building 1 Showroom 2-B1S2- 9' Artificial Christmas Tree	
29.....	B1SR2-(4) Stationary Office Chairs	
30.....	B1SR2- (4) Wood and Metal Stools	Seat Height: 30"
31.....	B1SR2- (4) Wood and Metal Stools	Seat Height: 30"
32.....	B1SR2- (4) Plastic and Metal Stackable Chairs	
33.....	B1SR2- (5) Plastic and Metal Stackable Chairs	
34.....	B1SR2- (6) Pleather Stationary Office Chairs.....	Wear present
35.....	B1SR2- (4) Stationary Office Chairs	Wear present
36.....	B1SR2- Pleather Loveseat.....	Wear present, 68"X38"
37.....	B1SR2- Glass Office Door	36"X79", buyer responsible for removal
38.....	B1SR2- 2-Piece Desk.....	66"X30", 48"X24"
39.....	B1SR2- Glass and Wood Door	36"X80", plus frame
40.....	B1SR2- 2-Piece Desk.....	66"X30", 48"X24"
41.....	B1SR2- 1-Piece Desk.....	66"X30"
42.....	B1SR2- 2-Piece Desk and Rolling Office Chair	66"X30", 48"X24"
44.....	B1SR2- (4) Fire Extinguishers	
45.....	B1SR2- (14) Cree LED Track Lights.....	Buyer guarantees they have insurance, must remove from ceiling, will need lift/scaffolding
46.....	B1SR1- (24) Cree LED Track Lights.....	Buyer guarantees they have insurance, must remove from ceiling, will need lift/scaffolding
47.....	B1SR1- Metal Railing	42' length in total, bring tools to removal
48.....	B1SR1- Metal Railing	42' length in total, bring tools to removal
49.....	B1 Office B1O- (2) Folding Tables	
50.....	B1O- Tote of Assorted Keys	
51.....	B1O- (5) Sets of Wood Shudders.....	22"X72"X1", and 34"X88"X1, bring tools to removal
52.....	B1O- Sterling and Noble Clock Co. Wall Clock.....	Reg. Serial Number: 2055787, 28" diameter
53.....	B1O- HON 5-Piece Office Set, Rolling Office Chair, Floor Mat, and Trashcan.....	72"X29"X24", 72"X36"X29", 42"X24"X29", top section 78"X37"X15",
54.....	B1O- Sony 30" Television With A Wall Mount.....	Bring tools to removal
55.....	B1O- Sony 40" Television.....	Bring tools to removal
56.....	B1O- Wall Mounted Whiteboard	Closed: 52"X49"X6", bring tools to removal
57.....	B1O- Contents of Closet	Pegboard, clock
58.....	B1O- Black Stand, Toaster Oven, and HP Printer.....	Stand: 32"X48"X22"

Inventory List

ONLINE BIDDING ENDS:
MONDAY, MARCH 4, 2024 AT 10:00 AM

#	Title	Description
59.....	B10- Contents Of Bathroom	Removal: Saturday, March 9, 2024 at 10:00 am only
60.....	B10- (8) Hollow Office Doors	Bring tools to removal, (3) 36"X79",(2) 30"X79" (3) 24"X79"
61.....	B10- Glass Office Door	36"X79", buyer responsible for removal
62.....	B10- Desk, 2 Drawer Lateral Filing Cabinet, and Wood Shelf	Desk: 71"X30"36", 35"X23"36", Bookshelf: 36"X60"X12", no contents included
63.....	B10- HON and Unmarked 2 Drawer Filing Cabinets	
64.....	B10- Thomas Leung Framed Picture and Esque Framed Picture	Leung: 35"X28"X1", Esque: 40"X16"X1"
65.....	B10- Glass and Wood Door.....	32"X80", bring tools to removal
66.....	B10- Table and Rolling Office Chair.....	48"X28"X33", wear and damage present
67.....	B10- (6) Office Max Fold-A-Way Easels.....	(5) new in boxes
68.....	B10- Glass and Wood Door.....	35.5"X79", bring tools to removal
69.....	B10- Glass and Wood Door.....	35.5X79", bring tools to removal
70.....	B10- Glass and Wood Door.....	28"X79", bring tools to removal
71.....	B10- Glass and Wood Door.....	35.5X79", bring tools to removal
72.....	B10- Glass and Wood Door.....	35.5X79", bring tools to removal
73.....	B10- (2) Stationary Office Chairs	
74.....	B10- 2-Piece Desk, Rolling Office Chair, Keyboard, and Mouse	60"X29"X23.5", 36"X19.5"X23.5"
75.....	B10- Desk and Rolling Office Chair	47.5"X28.5"X26"
76.....	B10- 2 Door Cabinet	44"X29"X19"
77.....	B10- (2) 4 Drawer Filing Cabinets	
78.....	B10- (2) Stationary Office Chairs	
79.....	B10- 2 Drawer Lateral Filing Cabinet	
80.....	B10- 2-Piece Desk, Rolling Office Chair, Keyboard, Mouse, and Floor Mat	65.5"X30"X30", 48"X24"X30"
81.....	B10- Welcome Desk.....	Wear present, 83"X42"X37"
82.....	B10- Pleather Chair, Small End Table, and Stationary Office Chair	Wear and damage present
83.....	B10- Metal Trash Can	
84.....	B10- Table and Contents.....	Coffee pot and accessories, table: 47.5"X29"X15.5"
85.....	B10- 36" Round Table	42" tall
86.....	B10- Pleather Sofa, End Table, and Chair.....	Wear present, Sofa: 72"X30"
87.....	B10- Contents Of Mens Bathroom	Removal: Saturday, March 9, 2024 at 10:00 am only
88.....	B10- Contents Of Women's Bathroom.....	Removal: Saturday, March 9, 2024 at 10:00 am only
89.....	B10- Desk, 2 Drawer Lateral Filing Cabinet, Rolling Office Chair, Monitor, Keyboard, and Calculator	Desk: 60"X29"X36"
90.....	B10- Elkay Drinking Fountain.....	Bring tools to removal, must turn off valve
91.....	B10- Desk, 2 Drawer Filing Cabinet, Monitor, and Floor Mat	Desk: 60"X29.5"X30"
92.....	B10- Desk and 2 Drawer Filing Cabinet.....	Desk: 60"X30"X36"
93.....	B10- (4) Cubicle Dividers.....	Bring tools to removal
94.....	B10- Glass Office Door.....	36"X79", bring tools to removal
95.....	B10- 2-Piece Desk, Rolling Office Chair, Stationary Office Chair, 2 Drawer Filing Cabinet, and Trash Can	66"X30"X30", 48"X24"X30"
96.....	B10- 4 Door Lateral Filing Cabinet	
97.....	B10- (2) Small Desks and Trash Cans	
98.....	B10- (3) Pictures	35"X19", 24"X13"
99.....	B10- Table and Contents.....	Table: 60"X28"X30", calculators, coffee pot, paper punch, and other assorted items
100.....	B10- (2) 2 Drawer Filing Cabinets and Paper Cutter	
101.....	B10- Paper Shredder	
102.....	B10- (2) Stationary Office Chairs	
103.....	B10- Desk and Contents on Top.....	72"X30"X36, calculator, fan, electric stapler, power strip
104.....	B10- 2 Door Lateral Filing Cabinet and Stationary Office Chair	
105.....	B10- 4 Drawer Filing Cabinet	
106.....	S10- Side Section of Desk	48"X30"X24", wear present
107.....	B10- (2) 2 Drawer Filing Cabinets	
108.....	B10- Desk, 2 Drawer Lateral Filing Cabinet, and Rolling Hanging File Cart	60"X30"X30"
109.....	B10- Glass and Aluminum Door.....	35"X81", bring tools for removal
110.....	Building 1 Drive Thru B1DT- Glass and Metal Door	35.5"X83.5", bring tools to removal
111.....	B1DT- Commercial Slat Wall	Bring ladder and tools to removal
112.....	B1DT- Dayton Radiant Gas Heater.....	Will be on ground at time of removal
113.....	B1DT- Radiant Gas Heater	Will be on ground at time of removal
114.....	B1DT- Dayton Radiant Gas Heater.....	Will be on ground at time of removal
115.....	B1DT- Radiant Gas Heater	Will be on ground at time of removal
116.....	B1DT- Dayton Radiant Gas Heater.....	Will be on ground at time of removal

Inventory List

ONLINE BIDDING ENDS:
MONDAY, MARCH 4, 2024 AT 10:00 AM

#	Title	Description
117.....	B1DT- Eaton Electric Car Charger	Buyer must have insurance, must cap off electrical, bring tools to removal
118.....	B1DT- (3) Service Desks, (2) Stools, (1) Filing Cabinet, Monitor, Keyboard, and Telephone	Each section: 48"X42"X24", wear present
119.....	B1DT- Small Oval Table.....	47"X20"X19.5"
121.....	B1DT- (4) Stationary Office Chairs	
122.....	B1DT- (4) Stationary Office Chairs	
123.....	B1DT- Dry Erase Board	72"X48"
124.....	B1DT- Vizio 42" Television	Bring tools to removal
125.....	B1DT- Metal Trash Can	
126.....	B1DT- Mirror and Coat Stand	Mirror: 31"X43.5"
127.....	B1DT- Sofa Table and (4) Lights	Wear present, 47.5"X20"X16"
128.....	B1DT- (2) Pleather Chairs	Wear and damage present
129.....	B1DT- Metal Magazine Rack.....	10"X65.5"X4", bring tools to removal
130.....	B1DT- Countertop and Cabinets.....	Countertop: 85", 44" length, 22" deep, 30" tall
131.....	B1DT- Vendor's Cabinet and Microwave	Cabinet: 27"X72"X23"
132.....	Building 1 Service 1 B1S1- Rotary Lift.....	All lift purchases require \$550 surcharge per lift plus the buyers premium and sales tax. Rigger is taking down lifts and putting on pallets. This surcharge includes loading only on Friday March 8, 2024 from 8:30 AM - 3:30 PM. A Buyer can remove on regular removal days if they bring their own fork lift and have proof of their own insurance. 7,000 Lb. Car lift, 89" clearance, Model: SPOA7, works
133.....	B1S1- Benwil Lift.....	All lift purchases require \$550 surcharge per lift plus the buyers premium and sales tax. Rigger is taking down lifts and putting on pallets. This surcharge includes loading only on Friday March 8, 2024 from 8:30 AM - 3:30 PM. A Buyer can remove on regular removal days if they bring their own fork lift and have proof of their own insurance. 7,000 Lb. Car lift, 91" clearance, Model: GPOA-7, works
134.....	B1S1- Benwil Lift.....	All lift purchases require \$550 surcharge per lift plus the buyers premium and sales tax. Rigger is taking down lifts and putting on pallets. This surcharge includes loading only on Friday March 8, 2024 from 8:30 AM - 3:30 PM. A Buyer can remove on regular removal days if they bring their own fork lift and have proof of their own insurance. 7,000 Lb. Car lift, 91" clearance, Model: GPOA-7, works
135.....	B1S1- Rotary Lift.....	All lift purchases require \$550 surcharge per lift plus the buyers premium and sales tax. Rigger is taking down lifts and putting on pallets. This surcharge includes loading only on Friday March 8, 2024 from 8:30 AM - 3:30 PM. A Buyer can remove on regular removal days if they bring their own fork lift and have proof of their own insurance. 7,000 Lb. Car lift, 89" clearance, Model: SPOA7, works
136.....	B1S1- Rotary Lift.....	All lift purchases require \$550 surcharge per lift plus the buyers premium and sales tax. Rigger is taking down lifts and putting on pallets. This surcharge includes loading only on Friday March 8, 2024 from 8:30 AM - 3:30 PM. A Buyer can remove on regular removal days if they bring their own fork lift and have proof of their own insurance. 7,000 Lb. Car lift, 90" clearance, Model: SPOA7, works
137.....	B1S1- Rotary Lift.....	All lift purchases require \$550 surcharge per lift plus the buyers premium and sales tax. Rigger is taking down lifts and putting on pallets. This surcharge includes loading only on Friday March 8, 2024 from 8:30 AM - 3:30 PM. A Buyer can remove on regular removal days if they bring their own fork lift and have proof of their own insurance. 7,000 Lb. Car lift, 90" clearance, Model: SPOA7-100, works
138.....	B1S1- Hunter (4) Pole Heavy Duty Wheel Alignment Machine	All lift purchases require \$550 surcharge per lift plus the buyers premium and sales tax. Rigger is taking down lifts and putting on pallets. This surcharge includes loading only on Friday March 8, 2024 from 8:30 AM - 3:30 PM. A Buyer can remove on regular removal days if they bring their own fork lift and have proof of their own insurance. 18,000 Lb. Truck lift, Model: L441, works
139.....	B1S1- Rotarty Lift.....	All lift purchases require \$550 surcharge per lift plus the buyers premium and sales tax. Rigger is taking down lifts and putting on pallets. This surcharge includes loading only on Friday March 8, 2024 from 8:30 AM - 3:30 PM. A Buyer can remove on regular removal days if they bring their own fork lift and have proof of their own insurance. 7,000 Lb. Car lift, 90" clearance, Model: SPOA7-100, works

Inventory List

ONLINE BIDDING ENDS:
MONDAY, MARCH 4, 2024 AT 10:00 AM

#	Title	Description
140.....	B1S1- Rotary Lift.....	All lift purchases require \$550 surcharge per lift plus the buyers premium and sales tax. Rigger is taking down lifts and putting on pallets. This surcharge includes loading only on Friday March 8, 2024 from 8:30 AM - 3:30 PM. A Buyer can remove on regular removal days if they bring their own fork lift and have proof of their own insurance. 7,000 Lb. Car lift, 90" clearance, Model: unknown (sticker missing), works
141.....	B1S1- Rotary Lift.....	All lift purchases require \$550 surcharge per lift plus the buyers premium and sales tax. Rigger is taking down lifts and putting on pallets. This surcharge includes loading only on Friday March 8, 2024 from 8:30 AM - 3:30 PM. A Buyer can remove on regular removal days if they bring their own fork lift and have proof of their own insurance. 9,000 Lb. Car lift, 95" clearance, Model: SPOA9-200, works
142.....	B1S1- Rotarty Lift.....	All lift purchases require \$550 surcharge per lift plus the buyers premium and sales tax. Rigger is taking down lifts and putting on pallets. This surcharge includes loading only on Friday March 8, 2024 from 8:30 AM - 3:30 PM. A Buyer can remove on regular removal days if they bring their own fork lift and have proof of their own insurance. 9,000 Lb. Car lift, 95" clearance, Model: SPOA9-200, works
143.....	B1S1- Rotarty Lift.....	All lift purchases require \$550 surcharge per lift plus the buyers premium and sales tax. Rigger is taking down lifts and putting on pallets. This surcharge includes loading only on Friday March 8, 2024 from 8:30 AM - 3:30 PM. A Buyer can remove on regular removal days if they bring their own fork lift and have proof of their own insurance. 7,000 Lb. Car lift, 90" clearance, Model: SPOA7-100, works
144.....	B1S1- (3) 4 Drawer File Cabinets.....	Wear present
145.....	B1S1- Lasko Industrial Fan.....	
146.....	B1S1- Eaton Pow-R Station for Electric Vehicles.....	Buyer must have insurance, must cap off electrical, bring tools to removal
147.....	B1S1- Rolling Cart.....	
148.....	B1S1- Desk.....	Wear present
149.....	B1S1- Industrial Work Table.....	Wear present, bring tools to removal
150.....	B1S1- Shure Work Table.....	Wear present, bring tools to removal
151.....	B1S1- Shure Work Table and Columbia Viae.....	Wear present, bring tools to removal
152.....	B1S1- Metal Storage Cabinet and Contents.....	
153.....	B1S1- Barrel Cart and Spout.....	
154.....	B1S1- Ammco Brake Service Machine.....	No. 6950, Twin Facing Tool, vacuum and creeper not included
155.....	B1S1- Industrial Fan.....	
156.....	B1S1- Columbian 2060 Vise.....	Table not included, bring tools to remove from table
157.....	B1S1- Work Stand.....	
158.....	B1S1- Shure Work Table.....	Vise not included, bring tools to removal, wear present
159.....	B1S1- Rolling Industrial Cart.....	Wear present
160.....	B1S1- Metal Storage Cabinet.....	Wear present
161.....	B1S1- Metal Rag Bin.....	Wear present
162.....	B1S1- Shure Work Table.....	Wear present, bring tools to removal
163.....	B1S1- Industrial Storage Shelf and Contents.....	Wear present
164.....	B1S1- Shure Work Table.....	Wear present, bring tools to removal
165.....	B1S1- GE Washer and Dryer.....	
166.....	B1S1- Lyden Oil Co. Antifreeze Barrel Pump.....	
167.....	B1S1- Reznor Heating System.....	Will need to unhook electrical and oil lines, bring or rent own forklift to remove. Empty Barrel, full barrel of used oil included, very heavy, oil still in tank
168.....	B1S1- Hons 52200 Lift Table.....	Max weight 1760 Lbs., air driven
169.....	B1S1- Heavy Duty Industrial Hoist.....	3 Ton capacity, Model: LRC3A
170.....	B1S1- Homelite 22" Trim Weed Wacker.....	160cc
171.....	B1S1- Industrial Work Table.....	Wear present
172.....	B1S1- Vise.....	Table not included, bring tools to removal
173.....	B1S1- Industrial Work Table.....	Vise not included, bring tools to removal, wear present, 1 door off hinge
174.....	B1S1- Motorvac BrakeVac II System Machine.....	
175.....	B1S1- Industrial Work Table.....	Wear present, bring tools to removal
176.....	B1S1- Troy Oil Recovery Unit.....	
177.....	B1S1- Vise.....	Table not included, bring tools to removal
178.....	B1S1- Shure Work Table.....	Vise not included, bring tools to removal, wear present
179.....	B1S1- Gulf Select Brake System Machine.....	
181.....	B1S1- OTC Transmission Jack.....	
182.....	B1S1- (2) Safety Stands.....	

Inventory List

ONLINE BIDDING ENDS:
MONDAY, MARCH 4, 2024 AT 10:00 AM

#	Title	Description
183.....	B1S1- (2) Drawer Filing Cabinet, Bin, Stationary Office Chair.....	Wear and damage present
184.....	B1S1- 165 Gallon Plastic Fluid Container and Pump	
185.....	B1S1- Vidmar Rolling Tool Chest With Hyundai Specialty Tools Inside	
186.....	B1S1- Columbian Vise	Table not included, bring tools to removal
187.....	B1S1- Shure Industrial Table	Wear present, bring tools to removal, 60"X24"X27"
188.....	B1S1- Hein Car Jack	No label present with specs.
189.....	B1S1- Industrial Floor Fan	
190.....	B1S1- Athol 614 Vise	Table not included, bring tools to removal
191.....	B1S1- Shure Industrial Work Table	Vise not included, bring tools to removal, wear present, 60"X24"X27"
192.....	B1S1- Shure Industrial Work Table	Bring tools to removal, wear present, 60"X24"X27"
193.....	B1S1- Yellow Rolling Industrial Cart	Wear present
194.....	B1S1- Metal Shelf	
195.....	B1S1- Branick Model 7200 Strut Spring Compressor	Buyer must disconnect electrical and cap electrical, bring tools to removal, wear present, 60"X24"X27"
196.....	B1S1- Contents of Closet.....	(2) stands, (2) stools, mop, snow shovels, used hydraulic pump with oil container
197.....	B1S1- Columbian No. 503 1/2 Vise	Table not included, bring tools to removal
198.....	B1S1- Shure Industrial Work Table	Vise not included, wear present, bring tools to removal, 60"X24"X27"
199.....	B1S1- Barrel Pump, 5 Gallon Shop Vac., and Duralast Creeper	
200.....	B1S1- Industrial Work Table	Wear present, 60"X27.5"X24"
201.....	B1S1- Rolling Office Chair, Empty Barrel, and Step Stool	Wear and damage present
202.....	B1S1- Computer Stand, Keyboard, Monitor, and Printer	
203.....	B1S1- Wood Table	Wear present, 42"X30"X28"
204.....	B1S1- 4 Drawer Lateral Filing Cabinet	
205.....	B1S1- 5 Drawer Lateral Filing Cabinet	
206.....	B1S1- 5 Drawer Lateral Filing Cabinet	
207.....	B1S1- Natural Gas Radiant Heater	Will be on ground at time of removal
208.....	B1S1- Balcrank Oil Reel Dispenser.....	\$50 Surcharge plus buyers premium and tax to disconnect from ceiling. Will be on ground at time of removal
209.....	B1S1- Balcrank Oil Reel Dispenser.....	\$50 Surcharge plus buyers premium and tax to disconnect from ceiling. Will be on ground at time of removal
210.....	B1S1- Natural Gas Radiant Heater	Will be on ground at time of removal
211.....	B1S1-Dayton Natural Gas Radiant Heater	Will be on ground at time of removal
212.....	B1S1- Balcrank Oil Reel Dispenser.....	\$50 Surcharge plus buyers premium and tax to disconnect from ceiling. Will be on ground at time of removal
213.....	B1S1- Balcrank Oil Reel Dispenser.....	\$50 Surcharge plus buyers premium and tax to disconnect from ceiling. Will be on ground at time of removal
214.....	B1S1- Balcrank Oil Reel Dispenser.....	\$50 Surcharge plus buyers premium and tax to disconnect from ceiling. Will be on ground at time of removal
215.....	B1S1- Balcrank Oil Reel Dispenser.....	\$50 Surcharge plus buyers premium and tax to disconnect from ceiling. Will be on ground at time of removal
216.....	B1S1- Natural Gas Radiant Heater	Will be on ground at time of removal
217.....	B1S1- Extension Cord Reel	Must bring ladder/tools to removal
218.....	B1S1- Natural Gas Radiant Heater	Will be on ground at time of removal
219.....	B1S1- Natural Gas Radiant Heater	Will be on ground at time of removal
220.....	B1S1- Natural Gas Radiant Heater	Will be on ground at time of removal
221.....	B1S1- Balcrank Oil Reel Dispenser.....	\$50 Surcharge plus buyers premium and tax to disconnect from ceiling. Will be on ground at time of removal
222.....	B1S1- Balcrank Oil Reel Dispenser.....	\$50 Surcharge plus buyers premium and tax to disconnect from ceiling. Will be on ground at time of removal
223.....	B1S1- Natural Gas Radiant Heater	Will be on ground at time of removal
224.....	B1S1- Balcrank Oil Reel Dispenser.....	\$50 Surcharge plus buyers premium and tax to disconnect from ceiling. Will be on ground at time of removal
225.....	B1S1- Balcrank Oil Reel Dispenser.....	\$50 Surcharge plus buyers premium and tax to disconnect from ceiling. Will be on ground at time of removal
226.....	B1S1- Natural Gas Radiant Heater	Will be on ground at time of removal
227.....	B1S1- Balcrank Oil Reel Dispenser.....	\$50 Surcharge plus buyers premium and tax to disconnect from ceiling. Will be on ground at time of removal
228.....	B1S1- Alemite Oil Reel Dispenser.....	\$50 Surcharge plus buyers premium and tax to disconnect from ceiling. Will be on ground at time of removal
229.....	B1S1- Natural Gas Radiant Heater	Will be on ground at time of removal
230.....	B1S1- Balcrank Oil Reel Dispenser.....	\$50 Surcharge plus buyers premium and tax to disconnect from ceiling. Will be on ground at time of removal

Inventory List

ONLINE BIDDING ENDS:
MONDAY, MARCH 4, 2024 AT 10:00 AM

#	Title	Description
231.....	B1S1- Dayton Natural Gas Radiant Heater	Will be on ground at time of removal
232.....	B1S1- Natural Gas Radiant Heater	Will be on ground at time of removal
233.....	B1S1- Fire Extinguisher	
234.....	B1S1- Fire Extinguisher	
235.....	B1S1- Fire Extinguisher	
236.....	B1S1- Fire Extinguisher	
237.....	B1S1- Fire Extinguisher	
238.....	B1S1- (2) Fire Extinguishers	
239.....	B1SO- Fire Extinguisher	No contents
240.....	Building 1 Service Office B1SO- First Aid Hanging Kit	
241.....	B1SO- 2 Drawer Filing Cabinet	Wear present
242.....	B1SO- 5 Drawer Lateral Filing Cabinet.....	Wear present
243.....	B1SO- 4 Drawer Wood Lateral Filing Cabinet	Wear present
244.....	B1SO- Stand Alone Whiteboard	
245.....	B1SO- 4 Drawer Lateral Filing Cabinet.....	Wear present
246.....	B1SO- (2) HP Printers, Credit Card Machine, and Telephone	
247.....	B1SO- (3) Keyboards, Monitor, Telephone, Pair of Computer Speakers, and Paper Organizer	
248.....	B1SO- (3) Rolling Office Chairs	Wear present
249.....	Building 1 Parts B1P- Wiper Blade Display (2) Parts	
250.....	B1P- (1) Section of Heavy Duty Shelving	37.5"X84"X18.5"
251.....	B1P- (1) Section of Heavy Duty Shelving	37.5"X84"X18.5"
252.....	B1P- (2) Sections of Heavy Duty Shelving.....	Each section measures: 37.5"X84"X18.5"
253.....	B1P- (1) Section of Heavy Duty Shelving	37.5"X84"X18.5"
254.....	B1P- Double Sided Metal Shelf.....	38"X84"X12" (each section)
255.....	B1P- Metal Shelf.....	38"X84"X12"
256.....	B1P- Metal Shelf.....	38"X84"X12"
257.....	B1P- Metal Shelf.....	38"X84"X12"
258.....	B1P- Double Sided Metal Shelf.....	38"X84"X12" (each section)
259.....	B1P- Double Sided Metal Shelf.....	38"X84"X12" (each section)
260.....	B1P- Metal Shelf.....	38"X84"X12"
261.....	B1P- Metal Shelf.....	38"X84"X12"
262.....	B1P- Metal Shelf.....	38"X84"X12"
263.....	B1P- Metal Shelf.....	38"X84"X12"
264.....	B1P- Metal Shelf.....	38"X84"X12"
265.....	B1P- Metal Shelf.....	38"X84"X12"
266.....	B1P- Metal Shelf.....	38"X84"X12"
267.....	B1P- Metal Shelf.....	38"X84"X12"
268.....	B1P- Metal Shelf.....	38"X84"X12"
269.....	B1P- Metal Shelf.....	38"X84"X12"
270.....	B1P- Metal Shelf.....	38"X84"X12"
271.....	B1P- Metal Shelf.....	38"X84"X12"
272.....	B1P- Metal Shelf.....	38"X84"X12"
273.....	B1P- Metal Shelf.....	38"X84"X12"
275.....	B1P- (6) Sections of Heavy Duty Shelving.....	37.5"X84"X18.5" (each section)
276.....	B1P- Metal Shelf.....	38"X84"X12"
277.....	B1P- Double Sided Metal Shelf.....	38"X84"X12" (each section)
278.....	B1P- Metal Shelf.....	38"X84"X12"
279.....	B1P- Double Sided Metal Shelf.....	38"X84"X12" (each section)
280.....	B1P- (2) Metal Shelves Connected	38"X84"X12" (each section)
281.....	B1P- Metal Shelf.....	38"X84"X12"
282.....	B1P- Metal Shelf.....	38"X84"X12"
283.....	B1P- (4) Metal Shelves Connected	38"X84"X12" (each section)
284.....	B1P- Metal Shelf.....	38"X84"X12"
285.....	B1P- Metal Shelf.....	38"X84"X12"
286.....	B1P- Metal Shelf.....	38"X84"X12"
287.....	B1P- Metal Shelf.....	38"X84"X12"
288.....	B1P- (8) Metal Shelves Connected	38"X84"X12" (each section)
289.....	B1P- (8) Metal Shelves Connected	38"X84"X12" (each section)
290.....	B1P- Metal Shelf.....	38"X84"X12"
291.....	B1P- (2) Metal Shelves Connected	38"X84"X12" (each section)
292.....	B1P- Metal Shelf (With Bins)	38"X84"X12"
293.....	B1P- (2) Metal Shelves Connected	38"X84"X12" (each section)

Inventory List

ONLINE BIDDING ENDS:
MONDAY, MARCH 4, 2024 AT 10:00 AM

#	Title	Description
294.....	B1P- Metal Shelf	38"X84"X12"
295.....	B1P- Metal Shelf	38"X84"X12"
296.....	B1P- (3) Metal Shelves Connected	38"X84"X12" (each section)
297.....	B1P- (2) Metal Shelves Connected	38"X84"X12" (each section)
298.....	B1P- Metal Shelf	38"X84"X12"
299.....	B1P- Metal Shelf	38"X84"X12"
300.....	B1P- Metal Shelf	38"X84"X12"
301.....	B1P- Metal Shelf	38"X84"X12"
302.....	B1P- Metal Shelf	38"X84"X12"
303.....	B1P- Metal Shelf	38"X84"X12"
304.....	B1P- Metal Shelf	38"X84"X12"
305.....	B1P- Metal Shelf	38"X84"X12"
306.....	B1P- Metal Shelf	38"X84"X12"
307.....	B1P- Metal Shelf	38"X84"X12"
308.....	B1P- (4) Metal Shelves Connected	38"X84"X12" (each section)
309.....	B1P- Metal Shelf and Extra Shelves	38"X84"X12"
310.....	B1P- Metal Shelf	38"X84"X12"
311.....	B1P- Metal Shelf and Extra Shelves	38"X84"X12"
312.....	B1P- Section of Cabinets, Drawers, and Countertop	127"X36"X25.5", wear present
313.....	B1P- Wood Desk and Chair	55.5"X42"X24", wear present
314.....	B1P- Set of (4) Goodyear Tires and Jeep Rims	P245 70R17
315.....	B1P- Metal Garage Table	59"X35"X27.5", wear present, contents on top not included
316.....	B1P- (4) Cooper Tires and Ram Rims	275 65R18
317.....	B1P- (4) Firestone Tires and Dodge Ram Rims	275 65R18
318.....	B1P- (4) Firestone Tires and Dodge Ram Rims	275 60R20
319.....	B1P- Single Room Divider	46" wide, 72" tall
320.....	B1P- GF 2 Drawer Filing Cabinet	Wear present
321.....	B1P- Fire Extinguisher	
322.....	B1P- Reznor Natural Gas Garage Heater (Vented)	Will be on ground at time of removal
323.....	B1P- Assorted Locking Lug Nut Keys	
324.....	B1P- Headlight Adjustment Kit	
325.....	B1P- Hyundai Air Bag Deployment Tool and Assorted Electric Connectors	
326.....	B1P- Wood Desk	Wear present, 66"X29"X30", items on top not included
327.....	B1P- 4 Drawer Filing Cabinet	Wear present
328.....	B1P- Kent-Moore EVAP Tester Kit	J44680
329.....	B1P- United Technologies Hamilton Test Systems	
330.....	B1P- Storage Kit With Electrical Connectors Inside	
331.....	B1P- Kent-Moore Integrated HomeLink Tester	J-41540
332.....	B1P- Kent-Moore Integrated HomeLink Tester	J-41540
333.....	B1P- Kent-Moore Hyundai Piston Pin Remover & Replacer Set	J36074
334.....	B1P- Kent-Moore Sir Load Tool Case	J-38715-Case
335.....	B1P- Kent-Moore Cruise Control Tester Assorted Testers With Box Of Wire Connectors	J24958
336.....	B1P- (2) Balcrank Control Switches	
337.....	B1P- Work Station	48"X48"X24"
338.....	B1P-(1) Section of Lockers	24.5"X84.5"X21"
339.....	B1P-(1) Section of Lockers	24.5"X84.5"X21"
340.....	B1P-(1) Section of Lockers	24.5"X84.5"X21"
341.....	B1P- Lot of Single Shelves	
342.....	B1P Upper- (4) Goodyear Tires	205 55R16
343.....	B1PU- (4) Toyo Tires	205 45R16
344.....	B1PU- (4) Altimax Artic Tires	205 55R16
345.....	B1PU- (3) Douglas Tires and (1) Dunlop Tire	195 60R15, P225 45R19
346.....	B1PU- (3) Metal Shelves	(2) 37.5"X84"X18.5", (1) 36"X70.5"X15.5"
347.....	B1PU- (8) Black Upholstery and Steel Framed Stackable Chairs	
348.....	B1PU- Metal Shelf and Car Manuals	Mazda, Mitsubishi
349.....	B1PU- Metal Shelf and Car Manuals	Mazda, Mitsubishi
350.....	B1PU- Metal Shelf and Car Manuals	Mazda, Mitsubishi
351.....	B1PU- Metal Shelf and Car Manuals	Mazda, Mitsubishi
352.....	B1PU- Metal Shelf and Car Manuals	Mazda, Mitsubishi
353.....	B1PU- Metal Shelf and Car Manuals	Mazda, Mitsubishi
354.....	B1PU- Metal Shelf and Car Manuals	Mazda, Mitsubishi
355.....	B1PU-Phone System Located On Wall	Commercial system

Inventory List

ONLINE BIDDING ENDS:
MONDAY, MARCH 4, 2024 AT 10:00 AM

#	Title	Description
356.....	B1PU- Media Cart, and Television	
357.....	B1PU- Table	96"X29"X48"
358.....	B1PU-Table	95.5"X29"X43.5"
359.....	B1PU- (3) Rolling Office Chairs	(1) base is broken
360.....	B1PU- Media Cabinet	
361.....	B1PU- Round Table and Yellow Chair	29" diameter, wear present
363.....	B1PU- Drinking Fountain	Bring tools to removal, must turn off valve
364.....	B1PU- (2) Small Desks	
365.....	B1PU- (4) Black Upholstered Chairs	
366.....	B1PU- (5) Black Upholstered Chairs	
367.....	B1PU- (5) Black Upholstered Chairs	
368.....	B1PU- (5) Chairs	
369.....	B1PU- (2) Small Wood Desks	
370.....	B1PU- Desk.....	60"X29"X24"
371.....	B1PU- 2 Drawer Filing Cabinet	
372.....	B1PU- Desk.....	60"X29"X30"
373.....	B1PU- Desk.....	60"X29"X30"
374.....	B1PU- Desk.....	60"X29"X30"
375.....	B1PU- Desk.....	60"X29"X30"
376.....	B1PU- Meilink Steel Safe Co. Safe	Inner bottom door is missing, located upstairs, extremely heavy, must have help for removal
377.....	B1S2- Round Table.....	48" diameter, 29" tall
378.....	B1S2- (3) Chairs and Stool	
379.....	B1S2- Round Table.....	48" diameter, 29" tall
380.....	B1S2- Vinyl Curtain With Track.....	Must bring ladder/tools to remove track from ceiling
381.....	B1S2- Garage Flooring.....	Each square is 12"X12', 588 total pieces
382.....	B1S2- Industrial Floor Fan	
383.....	B1S2- (4) Honda Aluminum Rims	
384.....	B1S2- (2) Honda Aluminum Rims	
385.....	B1S2- (1) Honda Aluminum Rim	
386.....	B1S2- (1) Honda Aluminum Rim	
387.....	B1S2- (4) Honda Steel Rims	
388.....	B1S2- (2) Honda Aluminum Rims	
389.....	B1S2- (2) Honda Steel Rims	
390.....	B1S2- (2) Honda Aluminum Rims	
391.....	B1S2- (4) Aluminum Rims	
392.....	B1S2- (3) Honda Aluminum Rims	(1) bent
393.....	B1S2- (4) Honda Aluminum Rims	
394.....	B1S2- (4) Honda Steel Rims	
395.....	B1S2- (3) Honda Steel Rims	
396.....	B1S2- (2) Honda Aluminum Rim	
397.....	B1S2- (3) Honda Aluminum Rims	
398.....	B1S2- (3) Honda Aluminum Rims	
399.....	B1S2- (3) Honda Aluminum Rims	
400.....	B1S2- (5) Honda Aluminum Rims	
401.....	B1S2- (4) Honda Aluminum Rims	
402.....	B1S2- (7) Assorted Honda Rims.....	(2) Metal, (5) Aluminum
403.....	B1S2- Honda Hood Painted Blue (In box)	
404.....	B1S2- (4) Dunlop Tires.....	P225 45R19
405.....	B1S2- Perfect Hofman Brake Center.....	True Cut 401
406.....	B1S2- Industrial Work Table	60"X28"X24", wear present, brings tools to removal
407.....	B1S2- Husqvarna LC 121P Mower	
408.....	B1S2- Craftsman 675 Series Vacuum	
409.....	B1S2- Husqvarna HU775BBC Mower	
410.....	B1S2- (4) Trail Guide HLT Tires.....	275 65R18
411.....	B1S2- Troy Built Horse Hydrostatic Drive	20 HP, 597 cc, gas
412.....	B1S2- Tool Box and Flat Bed Cart	
413.....	B1S2- Gulf Select Coolant System	
414.....	B1S2- Engine Stand	
415.....	B1S2- (4) Goodyear Tires on Ram Rims.....	275 65R18
416.....	B1S2- Cooper Tire on Ram Rim	275 65R18
417.....	B1S2- Oil Catcher	
418.....	B1S2- Troy Oil Catcher	

Inventory List

ONLINE BIDDING ENDS:
MONDAY, MARCH 4, 2024 AT 10:00 AM

#	Title	Description
419.....	B1S2- Balcrank Oil Catcher	
420.....	B1S2- Balcrank Oil Catcher	
421.....	B1S2- Balcrank Oil Catcher	
422.....	B1S2- Plastic Storage Container With Attached Pump	
424.....	B1S2- Gas Caddy	
425.....	B1S2- Reznor Used Oil Heating System	Will need to unhook electrical and oil lines, bring or rent own forklift to remove.
426.....	B1S2- Steel Work Table	70"X34"X28", wear present
427.....	B1S2- Rotary Car Lift.....	All lift purchases require \$550 surcharge per lift plus the buyers premium and sales tax. Rigger is taking down lifts and putting on pallets. This surcharge includes loading only on Friday March 8, 2024 from 8:30 AM - 3:30 PM. A Buyer can remove on regular removal days if they bring their own fork lift and have proof of their own insurance. Model: SPOA7, 91" span, works
428.....	B1S2- Rotary Car Lift.....	All lift purchases require \$550 surcharge per lift plus the buyers premium and sales tax. Rigger is taking down lifts and putting on pallets. This surcharge includes loading only on Friday March 8, 2024 from 8:30 AM - 3:30 PM. A Buyer can remove on regular removal days if they bring their own fork lift and have proof of their own insurance. Model: SPOA7-100, 91" span, works
429.....	B1S2- Rotary Car Lift.....	All lift purchases require \$550 surcharge per lift plus the buyers premium and sales tax. Rigger is taking down lifts and putting on pallets. This surcharge includes loading only on Friday March 8, 2024 from 8:30 AM - 3:30 PM. A Buyer can remove on regular removal days if they bring their own fork lift and have proof of their own insurance. Model: SPOA7-100, 91" span, works
430.....	B1S2- Rotary Car Lift.....	All lift purchases require \$550 surcharge per lift plus the buyers premium and sales tax. Rigger is taking down lifts and putting on pallets. This surcharge includes loading only on Friday March 8, 2024 from 8:30 AM - 3:30 PM. A Buyer can remove on regular removal days if they bring their own fork lift and have proof of their own insurance. Model: SPOA7, 91" span, works
431.....	B1S2- Tire, Barrel Pump, and (3) Catch Pans	
432.....	B1S2- (4) Barrels of Gear Oil and (2) Dispensers	75W90, 80W80, MP2
433.....	B1S2- C4 Pneumatic Oil Filter Crusher	
434.....	B1S2- (1) Barrel of Valveline All Purpose Grease	
435.....	B1S2- Chicago Electric Cut Off Saw	
436.....	B1S2- Industrial Work Table	Wear present, 60"X27"X24, bring tools to removal, saw not included
437.....	B1S2- Mach030 Industrial Fan	
438.....	B1S2- Frigidaire Refrigerator	Model: FRT18S6AWU
439.....	B1S2- Jeep Parts	Wear present and damage
440.....	B1S2- (4) Metal Shelves.....	38"X84"X12" each section, contents not included
441.....	B1S2- Semi Bumper	
442.....	B1S2- Holland Fifth Wheel Plate	Model: XA-351-A-L-P, Serial: 90143420153
443.....	B1S2- Bucket of Bolts, Air Tank, and Aluminum	
444.....	B1S2- Club Car Golf Cart.....	Serial:PQ1136-225072, (1) flat tire
445.....	B1S2- Industrial Floor Fan	
446.....	B1S2- Metal Shelf	38"X84"X12"
447.....	B1S2- Industrial Work Table	60"X27"34"
448.....	B1S2- Blue Metal Rolling Tool Cart (Kobalt)	
449.....	B1S2- Drinking Fountain.....	Bring tools to removal, must turn off valve
450.....	B1S2- Dayton Gas Radiant Heater.....	Will be on ground at time of removal
451.....	B1S2- (1) Aluminum Rim	
452.....	B1S2- Natural Gas Radiant Heater	Will be on ground at time of removal
453.....	B1S2- Dayton Natural Gas Radiant Heater	Will be on ground at time of removal
454.....	B1S2- Oil Reel Dispenser	\$50 Surcharge plus buyers premium and tax to disconnect from ceiling. Will be on ground at time of removal
455.....	B1S2- Balcrank Oil Reel Dispenser.....	\$50 Surcharge plus buyers premium and tax to disconnect from ceiling. Will be on ground at time of removal
456.....	B1S2- Dayton Gas Radiant Heater.....	Will be on ground at time of removal
457.....	B1S2- Balcrank Oil Reel Dispenser.....	\$50 Surcharge plus buyers premium and tax to disconnect from ceiling. Will be on ground at time of removal
458.....	B1S2- Balcrank Oil Reel Dispenser.....	\$50 Surcharge plus buyers premium and tax to disconnect from ceiling. Will be on ground at time of removal
459.....	B1S2- Dayton Gas Radiant Heater.....	Will be on ground at time of removal
460.....	B1S2- Dayton Gas Radiant Heater.....	Will be on ground at time of removal
461.....	B1S2- Dayton Gas Radiant Heater.....	Will be on ground at time of removal

Inventory List

ONLINE BIDDING ENDS:
MONDAY, MARCH 4, 2024 AT 10:00 AM

#	Title	Description
462.....	B1S2- Oil Reel Dispenser	\$50 Surcharge plus buyers premium and tax to disconnect from ceiling. Will be on ground at time of removal
463.....	B1S2- Oil Reel Dispenser	\$50 Surcharge plus buyers premium and tax to disconnect from ceiling. Will be on ground at time of removal
464.....	B1S2- Dayton Gas Radiant Heater	Will be on ground at time of removal
465.....	B1S2- Oil Reel Dispenser	\$50 Surcharge plus buyers premium and tax to disconnect from ceiling. Will be on ground at time of removal
466.....	B1S2- Oil Reel Dispenser	\$50 Surcharge plus buyers premium and tax to disconnect from ceiling. Will be on ground at time of removal
467.....	B1S2- Balcrank Oil Reel Dispenser.....	\$50 Surcharge plus buyers premium and tax to disconnect from ceiling. Will be on ground at time of removal, catch clicker broke
468.....	B1S2- Balcrank Oil Reel Dispenser.....	\$50 Surcharge plus buyers premium and tax to disconnect from ceiling. Will be on ground at time of removal
469.....	B1S2- Natural Gas Radiant Heater	Will be on ground at time of removal
470.....	B1S2- Balcrank Oil Reel Dispenser.....	\$50 Surcharge plus buyers premium and tax to disconnect from ceiling. Will be on ground at time of removal
471.....	B1S2- Balcrank Oil Reel Dispenser.....	\$50 Surcharge plus buyers premium and tax to disconnect from ceiling. Will be on ground at time of removal
472.....	B1S2- Fire Extinguisher	
473.....	B1S2- Fire Extinguisher	
474.....	B1S2- Fire Extinguisher	
475.....	B1S2- Fire Extinguisher	
476.....	B1S2- Fire Extinguisher	
477.....	B1S2- Fire Extinguisher	
478.....	B1S2- Fire Extinguisher	
479.....	B1S2- Fire Extinguisher	
480.....	B1S2- Fume / Exhaust System	Being sold subject to confirmation, proof of insurance, must use electrician
481.....	B2SR- Display Box and Stand	
482.....	B2SR- Desk, Filing Cabinet, (2) Monitors, (2) Keyboards, Telephone	
483.....	B2SR- 2 Drawer Filing Cabinet	
484.....	B2SR- Desk and Stationary Office Chair	
485.....	B2SR- Drinking Fountain.....	Bring tools to removal
486.....	Desk, Cabinet, 2 Drawer Filing Cabinet, Monitor, and Keyboard	
487.....	B2SR- Desk, Monitor, Printer, and Calculator	
488.....	B2SR- 4 Drawer Filing Cabinet, 2 Drawer Lateral Filing Cabinet, (2) Metal Shelves, Storage Cabinet, (2) Monitors, and Desk Chair	
489.....	B2SR- Black Hood for a Vehicle	
490.....	B2SR- 2 Drawer Filing Cabinet.....	No key
491.....	B2SR- Faux Tree	
492.....	B2SR- (9) Upholstered Black Chairs	
493.....	B2SR- Round Table and (4) Chairs	
494.....	B2SR- Fire Extinguisher	
495.....	B2SR- (20) Blue Upholstered Chairs	Wear and damage present
496.....	B2SR- Miev Sign.....	Bring ladder/tools to removal
497.....	B2 Service B2S- Contents of Room	Chairs, tiki torches
498.....	B2S- Contents of Room	Plastic chair, paint bucket, sign holders
499.....	B2S- Fire Extinguisher	
501.....	B2S- Advanced Natural Gas Heater	Will be on ground at time of removal
502.....	B2S- Plastic Floor Matting	
503.....	B2S- Car Wash	Being sold subject to confirmation, proof of insurance, must use electrical, must cap off and have proper removal equipment
504.....	B2S- Advanced Natural Gas Heater	Will be on ground at time of removal
506.....	B2S- Contents of Room	
508.....	B2S- (1) Hot Water Tanks	
510.....	B2S- Draco Hastings Gas Forced Air Heater.....	Will be on ground at time of removal
511.....	B2S- Modine Natural Gas Heater	Will be on ground at time of removal
512.....	B2S- Contents of Bathroom.....	Removal: Saturday, March 9, 2024 at 10:00 am only
513.....	B2S- Rotary Lift Car Lift.....	All lift purchases require \$550 surcharge per lift plus the buyers premium and sales tax. Rigger is taking down lifts and putting on pallets. This surcharge includes loading only on Friday March 8, 2024 from 8:30 AM - 3:30 PM. A Buyer can remove on regular removal days if they bring their own fork lift and have proof of their own insurance. Works

Inventory List

ONLINE BIDDING ENDS:
MONDAY, MARCH 4, 2024 AT 10:00 AM

#	Title	Description
514.....	B2S- Rotary Lift Car Lift.....	All lift purchases require \$550 surcharge per lift plus the buyers premium and sales tax. Rigger is taking down lifts and putting on pallets. This surcharge includes loading only on Friday March 8, 2024 from 8:30 AM - 3:30 PM. A Buyer can remove on regular removal days if they bring their own fork lift and have proof of their own insurance. Works
516.....	B2S- (3) Metal Shelves and Extra Shelf Pieces	
517.....	B2S- (4) Glass Office Doors	
518.....	B2S- Heating and Air Conditioning System of Building	
519.....	B2S- Fire Extinguisher	
520.....	Building 3 B3 Garage 1 B3G1- Kysor Air Conditioning Unit (Parts Only.....	Pallet not included
521.....	B3G1- Metal Shelf	38"X84"X12"
522.....	B3G1- Metal Shelf	34.5"X78"X13.5"
523.....	B3G1- Trusted Clean Galaxy Machine	
524.....	B3G1- Spyder Wet/Dry Vac. With Cleaning Attachmwnenta	
525.....	B3G1- XTreem Car Products USA Machine.....	38"X84"X12"
526.....	B3G1- (6) Metal Shelves.....	38"X84"X12", each section
527.....	B3G1- (6) Metal Shelves.....	38"X84"X12", each section
528.....	B3G1- (7) Metal Shelves.....	38"X84"X12", each section
529.....	B3G1- (4) Metal Shelves.....	38"X84"X12", each section
530.....	B3G1- (4) Metal Shelves.....	38"X84"X12", each section
531.....	B3G1- (10) Metal Shelves.....	38"X84"X12", each section
532.....	Outside- Blue and White Brown Honda Pre-Owned Sign In Parking Lot	Buyer responsible to disconnect electrical, cap electrical and must provide proof of insurance, bring proper tools/equipment to removal, blow torch to cut even with the ground
533.....	O- Brown Honda Digital Advertising Sign In Parking Lot	Buyer responsible to disconnect electrical, cap electrical and must provide proof of insurance, bring proper tools/equipment to removal, large socket set recommended
534.....	O- BROWN Pre-Owned Aluminum/Plastic Letters on Front of Building.....	Buyer responsible to disconnect electrical, cap electrical and must provide proof of insurance, Bring proper tools/ equipment to remove
535.....	O- Handrails on Building 1 (Set on North Entrance).....	Bring proper tools/ equipment to remove
536.....	O- Handrails on Building 1 (Set on Northwest Entrance)	Bring proper tools/ equipment to remove
537.....	O- Handrails (Small) On Building 1 (West Entrance).....	Bring proper tools / equipment to remove
538.....	O- Handrails On Building 1 (Set on Northeast Entrance).....	Bring proper tools/ equipment to remove
539.....	O- Handrails on Building 1 (Doube Stair Railing) (East Entrance).....	Bring proper tools/ equipment to remove
540.....	O- (3) Pieces of Black Railing On Building 2.....	Bring proper tools/ equipment to remove
541.....	O- Eaton Electric Car Charger	Buyer must have insurance, must cap off electrical, bring tools to removal
542.....	O- Brown Pre-Owned Sign With Lightbulbs Surrounding It.....	Buyer responsible to disconnect electrical, cap electrical and must provide proof of insurance, bring proper tools/equipment to removal
543.....	O- Service Sign On Building 1	Buyer responsible to disconnect electrical, cap electrical and must provide proof of insurance, bring proper tools/equipment to removal
544.....	O- Sign With Lights (No Writing) on Building 1	Buyer responsible to disconnect electrical, cap electrical and must provide proof of insurance, bring proper tools/equipment to removal
545.....	O- Allied Incorporated Quincy Compressor Division Compressor	\$200 surcharge per compressor plus the buyers premium and sales tax. This surcharge includes disconnection of electrical and loading only on Friday March 8 , 2024 from 8:30 AM - 3:30 PM. A Buyer can remove on regular removal days if they bring their own fork lift and have proof of their own insurance. Bring proper tools/equipment to removal
547.....	O- Kaiser AS20 Sigma Control Basic Compressor and Kaiser Compressor With Holding Tank	\$200 surcharge per compressor plus the buyers premium and sales tax. This surcharge includes disconnection of electrical and loading only on Friday March 8 , 2024 from 8:30 AM - 3:30 PM. A Buyer can remove on regular removal days if they bring their own fork lift and have proof of their own insurance. Bring proper tools/equipment to removal
548.....	B3 Garage 2 B3G2- Oil Pan Catcher for Large Truck	
549.....	B3G2- Oil Pan Catcher for Large Truck	
550.....	B3G2- Meyer Hydraulic Engine Lift.....	Max. Capacity 3,000-6,000 LBS.
552.....	B3G2- Floor Jack.....	Tag missing with specs.
553.....	B3G2- Continental Shophoist 4000	8 ton capacity
554.....	B3G2- Floor Jack.....	Handwritten: 3 ton capacity, marked 93665
555.....	B3G2- Lincoln 225 AMP Arc Welder	
556.....	B3G2- Transmission Jack	
557.....	B3G2- Transmission Jack	
558.....	B3G2- OTC Clutch Handler	Model 5018A
559.....	B3G2- Lincoln Longarm Hydraulic Jack.....	8 Ton capacity, model: LRC8A

Inventory List

ONLINE BIDDING ENDS:
MONDAY, MARCH 4, 2024 AT 10:00 AM

#	Title	Description
560.....	B3G2- Hein-Werner Automotive 10 Ton Air Operated 10 Ton Lift	Model: HW93690, flat tire
561.....	B3G2- Gorbelt 6,000 Lb. Capacity Gantry Crane	
562.....	B3G2- Snap-On MT 1552 12 Volt Starting and Charging Systems Tester	
563.....	B3G2- Dewalt Cut-Off Saw	
564.....	B3G2- OTC Stinger Dual Wheel Dolly	1,500 Lb. Cap., Model: 1769A
565.....	B3G2- Air Compressor Reel With Hose	\$50 Surcharge plus buyers premium and tax to disconnect from ceiling. Will be on ground at time of removal
566.....	B3G2- Central Hydraulics 50 Ton Shop Press.....	Item: 46768, 70-100 PSI, Max. Capacity: 50 Tons
567.....	B3G2- Ammco The Professional Brake Service Alignment System	
568.....	B3G2- Balcrank Oil Reel Dispenser	\$50 Surcharge plus buyers premium and tax to disconnect from ceiling. Will be on ground at time of removal
569.....	B3G2- Oil Pan Catcher for Large Truck	
570.....	B3G2- Work Table, Bench Grinder, Vise, Drill, and Assorted Specialty Tools	
571.....	B3G2- Metal Shelf and Contents	38"X84"X12"
572.....	B3G2- Martins Industries MIC-3	
573.....	B3G2- 4 Drawer Filing Cabinet	Wear present
574.....	B3G2- Contents of Wall	
575.....	B3G2- Meyer Snow Plow.....	Part: 09102
576.....	B3G2- (5) Office Chairs	Heavy wear and dirt present
577.....	B3G2- U1St. Metal Clothing Hamper	
578.....	B3G2- Storage Lockers	
579.....	B3G2- Storage Lockers	
580.....	B3G2- Shelf, Desk, and Adjustable Stool	Wear present
581.....	B3G2- Reelworks Air Compressor Reel.....	\$50 Surcharge plus buyers premium and tax to disconnect from ceiling. Will be on ground at time of removal
582.....	B3G2- Balcrank Oil Reel Dispenser	\$50 Surcharge plus buyers premium and tax to disconnect from ceiling. Will be on ground at time of removal
583.....	B3G2- Industrial Work Table and Contents	
584.....	B3G2- Reelworks Air Compressor Reel.....	\$50 Surcharge plus buyers premium and tax to disconnect from ceiling. Will be on ground at time of removal. Hose is cut
585.....	B3G2- (6) Jack Stands	
586.....	B3G2- (8) Jack Stands	
587.....	B3G2- Forward Truck Lift.....	All lift purchases require \$550 surcharge per lift plus the buyers premium and sales tax. Rigger is taking down lifts and putting on pallets. This surcharge includes loading only on Friday March 8, 2024 from 8:30 AM - 3:30 PM. A Buyer can remove on regular removal days if they bring their own fork lift and have proof of their own insurance. Model: CR14N100Y
588.....	B3G2- Quincy Air Compressor.....	\$200 surcharge per compressor plus the buyers premium and sales tax. This surcharge includes disconnection of electrical and loading only on Friday March 8, 2024 from 8:30 AM - 3:30 PM. A Buyer can remove on regular removal days if they bring their own fork lift and have proof of their own insurance. Bring proper tools/equipment to removal. Model: QT-15
589.....	B3G2- ProGuard Motor Oil Container	Buyer must provide proof of insurance, must cap off, and have proper equipment for removal, this item is subject to withdraw from auction, half full of oil
590.....	B3G2- Jack With No Arm and Stinger 22 Ton Hydraulic Jack	
591.....	B3G1- Extra Shelves for Metal Shelf	
592.....	B3G1- 4 Drawer and 2 Drawer Filing Cabinet	
593.....	B3G1- (5) Metal Shelves	38"X84"X12"
594.....	B3G1- Metal Shelf	73.5"X84"X18.5"
595.....	B3G1- Safety Stand	
596.....	B3G1- (5) Metal Shelves, Steel Bar in Boxes, Empty Barrel	38"X84"X12"
597.....	B3G1- Storage Shelf and Scrap Shelving Pieces.....	52"X42"X20"
598.....	B3G1- (3) Desks	
599.....	B3G1- Primo Water Cooler	
600.....	B3G1- Heavy Duty PW-36 Aluminum Pipe Wrench	
601.....	O- Truck Box and Contents Of Truck Box	Truck tires, (Bridgestone, Firestone, Goodyear- 255-70R19) clutch assembly, plywood, skateboard, scooters, transmission, floor mats, box truck doors, radiator, metal, turning lights, aluminum steps, emergency triangle, (2) metal shelves
602.....	O- Truck Box and Contents of Truck Box With Aluminum Ramp	(3) Empty barrels, plastic barrel, acetylene torch cart, (2) drawer filing cabinet, semi truck seat, shop vac.
603.....	B1SR1- Viz-Pro Rolling Whiteboard	

Inventory List

ONLINE BIDDING ENDS:
MONDAY, MARCH 4, 2024 AT 10:00 AM

#	Title	Description
604.....	Oil Barrel and Antifreeze Barrel	
605.....	(13) Outdoor Parking Lot Lights	Buyer must have insurance, must cap off electrical, bring tools to removal, this item is subject to withdraw from auction
606.....	(5) Outdoor Parking Lot Lights	Buyer must have insurance, must cap off electrical, bring tools to removal, this item is subject to withdraw from auction
607.....	Computer Wheel Balancer	
608.....	Floor Scrubber	
609.....	Lasko Fan	
610.....	Rotary Lift	All lift purchases require \$550 surcharge per lift plus the buyers premium and sales tax. Rigger is taking down lifts and putting on pallets. This surcharge includes loading only on Friday March 8, 2024 from 8:30 AM - 3:30 PM. A Buyer can remove on regular removal days if they bring their own fork lift and have proof of their own insurance. 10,000 Lb. Model: SPOA10N5G0, works
611.....	ALM Lift	All lift purchases require \$550 surcharge per lift plus the buyers premium and sales tax. Rigger is taking down lifts and putting on pallets. This surcharge includes loading only on Friday March 8, 2024 from 8:30 AM - 3:30 PM. A Buyer can remove on regular removal days if they bring their own fork lift and have proof of their own insurance. 7,000 Lb. Car lift, 89" clearance, Model: 7002A, works
612.....	B1S1- Contents Of Bathroom	Removal: Saturday, March 9, 2024 at 10:00 am only
613.....	B1S1- Castrol Syntec Banner	Bring tools to remove
614.....	B1S1- Michelin Banner	Bring tools to remove
615.....	B1S1- Yokohama Banner	Bring tools to remove
616.....	B1S2- Multi-Mile Tire Headquarters Banner	Bring tools to remove
617.....	B1S2- Bridgestone Banner	Bring tools to remove
618.....	B2S- Wood Railing with 3 Metal Posts	
619.....	B2S- (39) Sets Of Floor Mats	
620.....	B2S- Box Full of Great Lakes Performance Series Keychain and Fender Badges	Approximately 30

Bid Now Online at www.PamelaRoseAuction.com or Download Our App!

TERMS:

Payment via Credit Card. **15% Buyer's Premium** will be added to the final hammer price **and 7.75% Sales Tax will be added.** View the Complete Terms and Conditions Posted Online.

AUTO LIFTS: Buyer of lift(s) is required to pay a surcharge of \$XXX per lift to Pamela Rose Auction. The surcharge pays for the dismantling and loading of lift(s) onto your trailer or hauler. Lifts must be removed before 4:00 pm on XXX.

LOCATION:

Brown Honda - 5625 Central Avenue, Toledo, Ohio 43615

PREVIEW:

Tuesday, February 27, 2024 from 11:00 am - 1:00 pm
Wednesday, February 28, 2024 from 11:00 am - 1:00 pm

REMOVAL via APPOINTMENT:

Wednesday, February 6, 2024 from 10:00 am - 6:00 pm
Thursday, February 7, 2024 from 10:00 am - 4:00 pm
Friday, February 8, 2024 from 10:00 am - 3:00 pm



STAY UP-TO-DATE ON SOCIAL MEDIA!



Michael Murray, Auctioneer, Cody Lewis, Auctioneer, and Pamela Rose, Auctioneer

©2024 Pamela Rose Auction Company, LLC