

2.84+/- ACRE WOODED LOT IN MONCLOVA

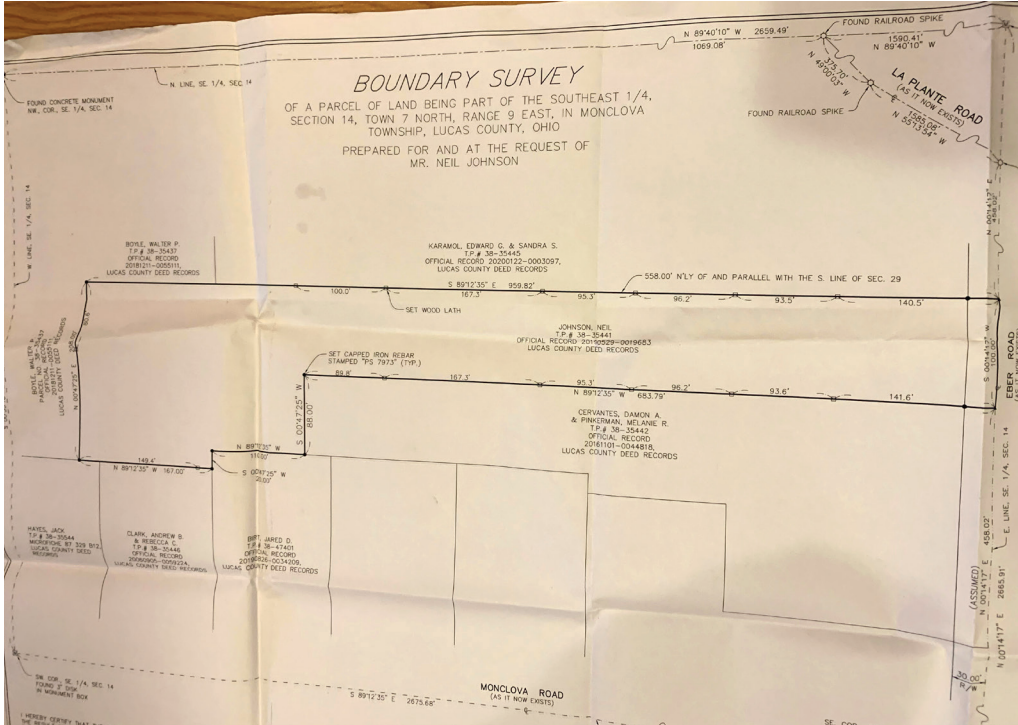
ONLINE LAND AUCTION

Bidding Ends: Thursday, January 6, 2022 at 12:00 pm



4316 EBER ROAD, MONCLOVA, OHIO 43542

2.84+/- ACRE WOODED LOT IN MONCLOVA ONLINE LAND AUCTION



Online Land Auction! Wooded lot in Monclova on 2.84+/- acres in park like setting! Hard to find land in this location. Located just 2.4 miles from Oak Openings MetroPark with biking, hiking, and horse trails.

School District:	Anthony Wayne	Township:	Monclova	Water:	Public
Elementary:	Monclova	Lot Size:	100 x 959		
Half Year Taxes:	\$468.55	Acres:	2.84+/-	Directions:	Between Monclova and Laplante
TD Parcel No.	38-35441	Trees:	Mixed		

ONLINE BIDDING ENDS: THURSDAY, JANUARY 6, 2022 AT 12:00 PM

TERMS & CONDITIONS: AUCTION REGISTRATION: The online registration is available at www.PamelaRoseAuction.com or on our Mobile App and will need to be completed. Next you'll receive an email indicating you **must provide proof of funds** from your bank that you have sufficient funds to cover the required earnest money down payment before online bidding is enabled and you receive a bid number. This may be accomplished by emailing to info@pamelaroseauction.com prior to the auction. Proof of funds consists of a copy or original of a current bank statement or brokerage statement in bidder's name showing sufficient funds for a **\$3,000 earnest money deposit**.

EARNEST MONEY REQUIREMENT: Winning online bidders must deliver earnest money via wire transfer or cashier's check to Midland Title & Escrow, immediately following the auction, in the amount of **\$3,000**. The successful online bidder will be notified immediately following the closing of the auction and Purchaser needs to sign and return purchase contracts as soon as possible and no later than 24 hours post auction via electronic signature or in person. Balance will be paid in full at closing on or before **45 Days** after acceptance.

TITLE: A guaranteed certificate of title will be provided at Seller's expense giving marketable title subject to existing easements and restrictions. The Escrow Agent will be Midland Title; 3355 Briarfield Boulevard, Maumee, Ohio 43537; Office: 419-259-5403.

DOCUMENTS AVAILABLE: A bidder's packet will be available online and will include Purchase Agreement, Agency Disclosure, Consumer Guide, and the Earnest Money Deposit Agreement.

BROKER PARTICIPATION: Broker participation is welcomed - call for registration forms and guidelines at 419-865-1224 or obtain online under Resources.

BUYER'S PREMIUM: Properties will be sold with a ten (10%) percent buyer's premium. The bid amount plus buyer's premium equals the final purchase price.

EXTENDED BIDDING: This online only auction has an extended bidding feature. The closing time of a property is automatically extended 5 minutes whenever a bid is placed in the last 5 minutes of the properties closing time. The bidding for the property will close when a period of 5 minutes has expired without an additional bid.

AGENCY: Auctioneer is a seller's agent.

WEBSITE UPDATES: Please refer to the website for updated information on occupancy, rents, or changes at www.pamelaroseauction.com.

DISCLAIMER: Announcements made day of auction take precedence over printed materials. All information in this brochure was derived from sources believed to be correct, but is not guaranteed. All property dimensions are only approximations. Buyers shall rely entirely on their own judgment and inspection of property and records.

View More Details and **BID NOW** Online At www.PamelaRoseAuction.com Or On Our App!



Pamela Rose Auction Company, LLC
REAL ESTATE | AUCTIONEERS | CONSULTANTS

Pamela Rose, REALTOR®, Auctioneer, AARE, CAI
Office: 419-865-1224

STAY UP-TO-DATE ON SOCIAL MEDIA!



©2021
Pamela Rose
Auction
Company, LLC