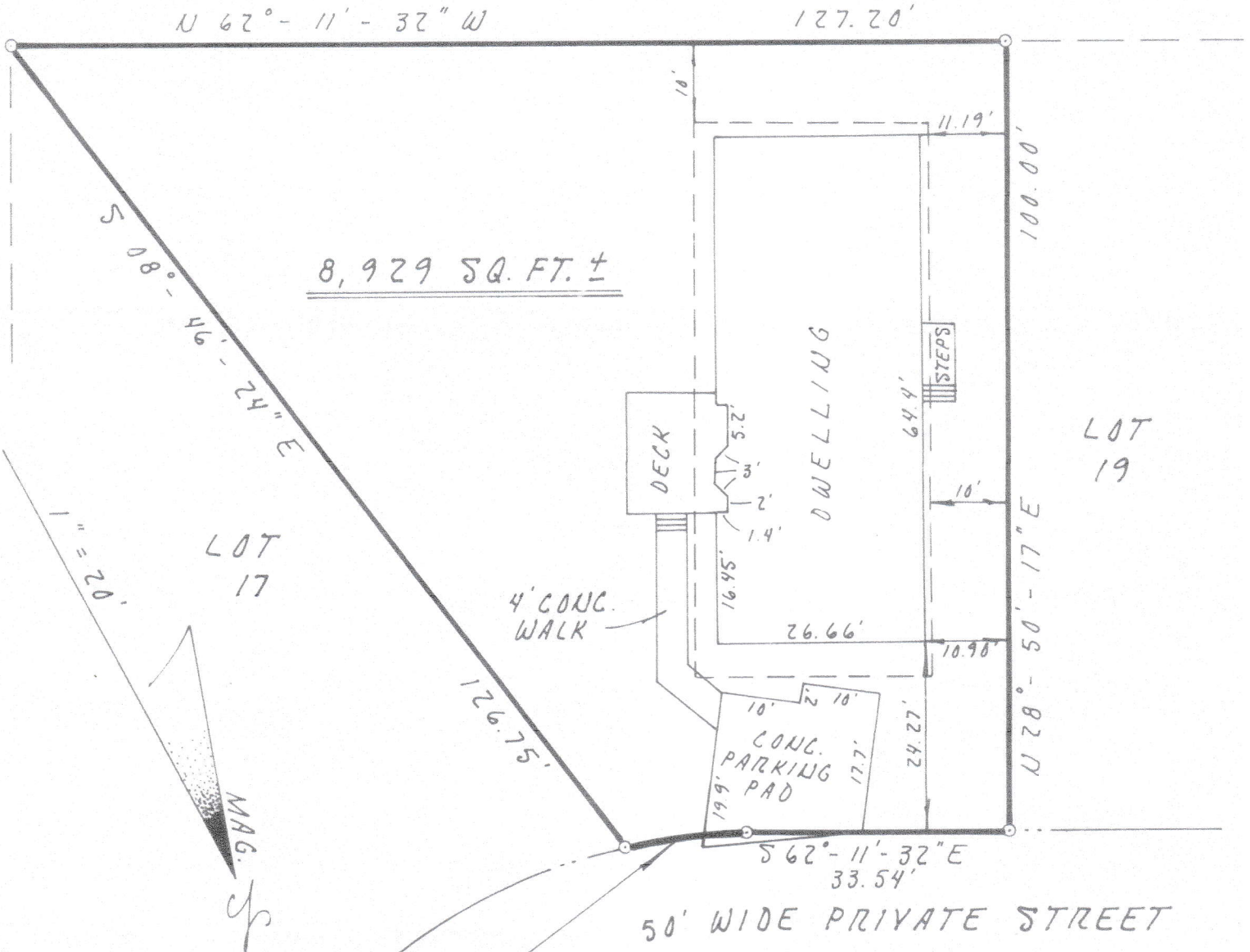


CONDOMINIUM UNIT

BUFFER ZONE

POINT



8,929 SQ. FT. ±

LOT 19

LOT 17

4' CONG. WALK

50' WIDE PRIVATE STREET

$r = 75.00'$
 $\Delta = 12^\circ - 34' - 31''$
 $A = 16.46'$
 $C = 16.42'$
 $BRG = S 68^\circ - 28' - 10'' E$

PLAT OF
LOT #18

"LONG NECK VILLAGE" DEVELOPMENT
 INDIAN RIVER RD. SUSSEX COUNTY
 STATE OF DELAWARE

SURVEYED/PREPARED BY: MILLER LEWIS, INC.
 NOVEMBER 6, 1992 SEAFORD, DE.
 DRAWN BY: D. A. MORRIS

Donald K. Miller