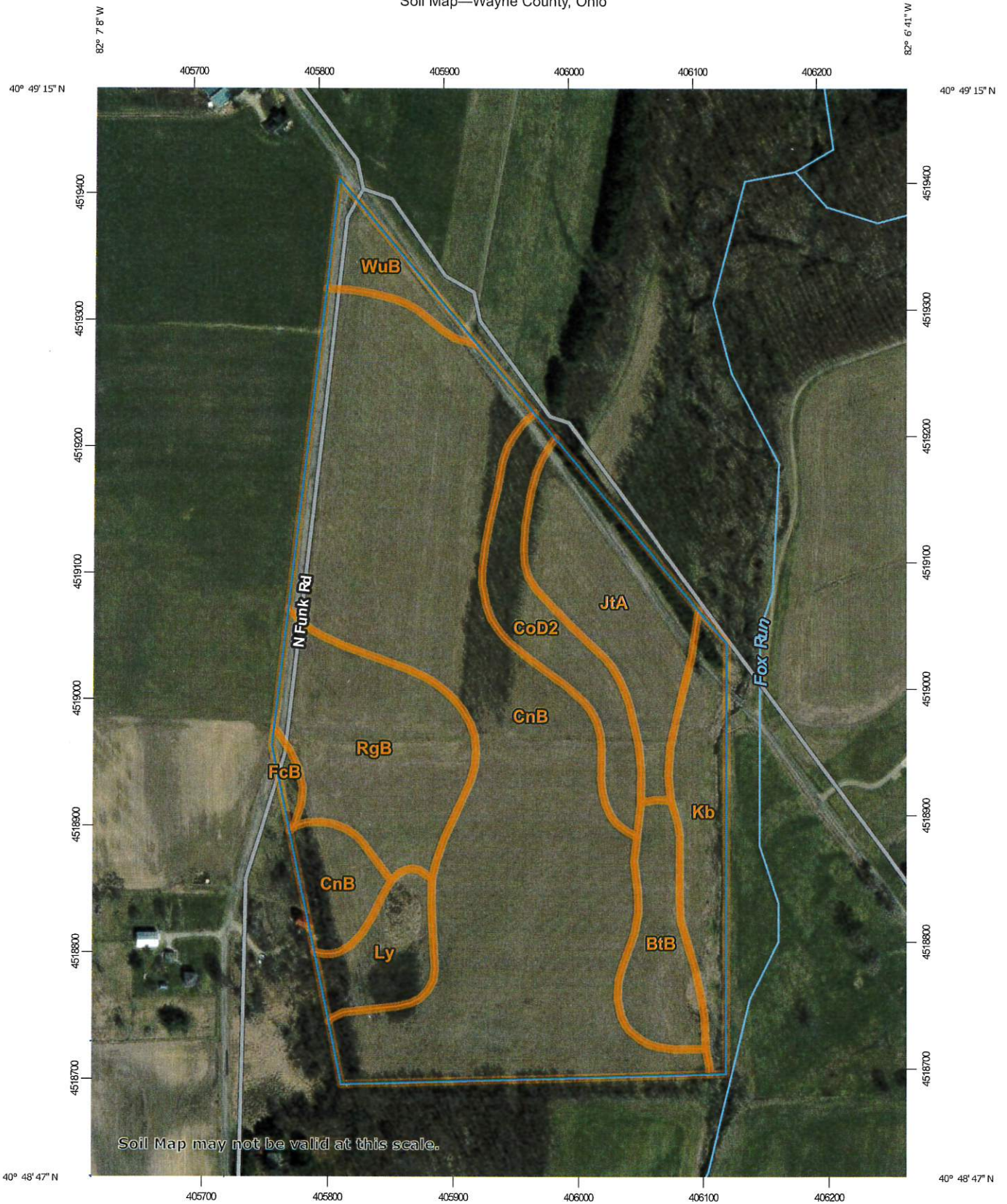
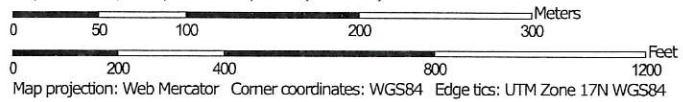


Soil Map—Wayne County, Ohio



Map Scale: 1:4,190 if printed on A portrait (8.5" x 11") sheet.



## Map Unit Legend

Map Unit Symbol	Map Unit Name	Acres in AOI	Percent of AOI
BiB	Bogart loam, 2 to 6 percent slopes	2.2	4.9%
CnB	Chili loam, 2 to 6 percent slopes	24.4	54.1%
CoD2	Chili gravelly loam, 12 to 25 percent slopes, eroded	2.9	6.5%
FcB	Fitchville silt loam, 2 to 6 percent slopes	0.2	0.5%
JtA	Jimtown loam, 0 to 2 percent slopes	4.4	9.7%
Kb	Killbuck silt loam, frequently flooded	2.9	6.3%
Ly	Luray silty clay loam, 0 to 2 percent slopes	1.7	3.8%
RgB	Rawson silt loam, 2 to 6 percent slopes	5.2	11.6%
WuB	Wooster-Riddles silt loams, 2 to 6 percent slopes	1.2	2.6%
<b>Totals for Area of Interest</b>		<b>45.2</b>	<b>100.0%</b>