

ABSOLUTE LAND AUCTION

Near Dalton, Ohio

60± Acres

Wayne County

Offered in 9 Parcels



Tillable Ground
Building Lots
Road Frontage
Great Location

FRIDAY, APRIL 24TH AT 6:00PM



(833) SOLD RES (833-765-3737)
www.RES.bid

FRIDAY, APRIL 24TH - 6PM

(833) SOLD RES (833-765-3737)



Real Estate & Equipment Specialists
www.RES.bid

ABSOLUTE LAND AUCTION

60± Acres

Wayne County

Near Dalton, Ohio

(833) SOLD RES (833-765-3737)
www.RES.bid



Joseph Mast - Andy White
Seth Andrews, Broker

375 Fry Road
Wooster, Ohio 44691

ABSOLUTE LAND AUCTION

60± Acres

Wayne County

Near Dalton, Ohio



Real Estate & Equipment Specialists

ABSOLUTE LAND AUCTION

60± Acres

Near Dalton, Ohio

Wayne County

Offered in 9 Parcels

FRIDAY, APRIL 24TH AT 6:00PM

Property is located on Burkhart and Tannerville Road, just North West of Dalton. Auction will be held on location, watch for RES signs.

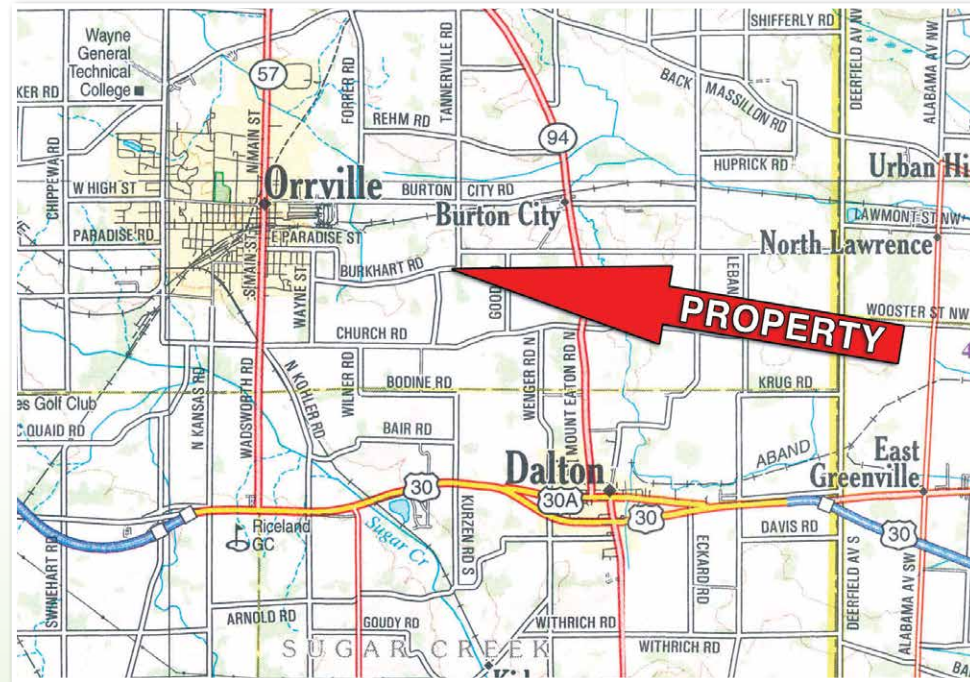
REAL ESTATE: Selling to the highest bidder regardless of price is 60+/- acres in Wayne County. This property offers a great location and just enough acreage to build your own gentleman's farm, add acreage to your portfolio or would be excellent building lots for a new home. Do not let this once in a lifetime opportunity pass you by.

Sale Order: Parcels will be offered by the acre with the winning bidder having choice on desired parcels. Once an individual is established on each parcel, we will then offer a combo of parcels 1 thorough 5 and parcels 6 through 9 and then offer in it's entirety.

- Parcel 1:** 6.5 Acres with frontage on Tannerville Rd.
- Parcel 2:** 6.5 Acres with frontage on Tannerville Rd.
- Parcel 3:** 6.5 Acres with frontage on Tannerville Rd.
- Parcel 4:** 6.5 Acres with frontage on Tannerville Rd.
- Parcel 5:** 6.2 Acres with frontage on Tannerville and Burkhart Rd.
- Parcel 6:** 8.9 Acres with frontage on Burkhart Rd.
- Parcel 7:** 7.0 Acres with frontage on Burkhart Rd.
- Parcel 8:** 5.8 Acres with frontage on Tannerville and Burkhart Rd.
- Parcel 9:** 5.7 Acres with frontage on Tannerville Rd.

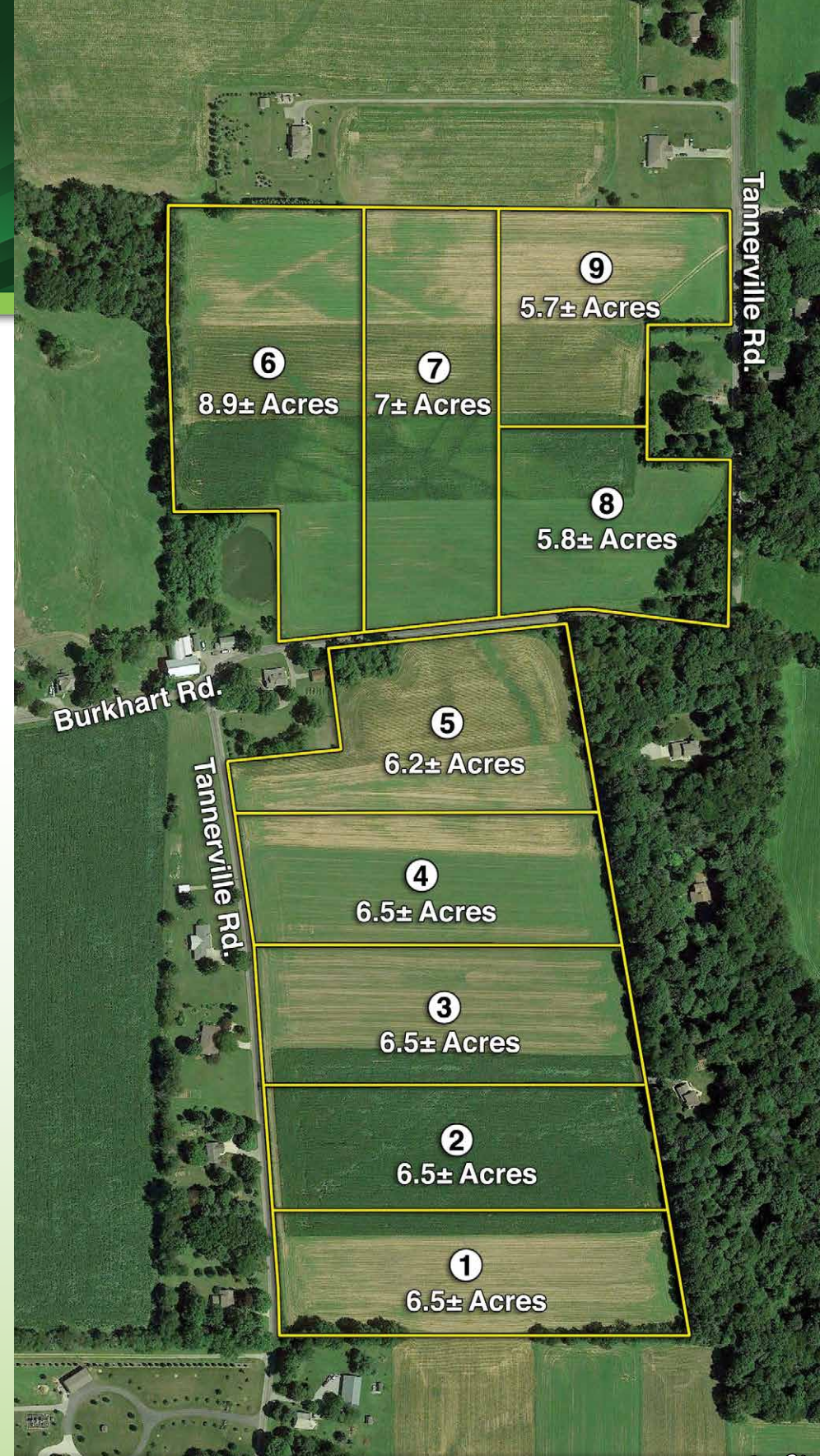
Terms: A non-refundable down payment of 10% of the purchase price is due at auction with the balance due at closing within 45 days or at the completion of the survey. A 10% Buyer's Premium will be added to the final bid to determine the purchase price. If sold separately there will be \$400/per parcel added to the price for the survey. You will be permitted to plant crops with down payment. All desired inspections need to be completed prior to bidding.

Mineral Rights: All mineral rights transfer subject to leases of record.



INSPECTION:

You may also pick up a brochure in the info box on the property and walk the land at your leisure.



Once in a Lifetime Opportunity!



RES AUCTION SERVICES

Real Estate & Equipment Specialists

Auction by order of: Larry and Mary Louise Hostetler
Joseph Mast - Andy White - Seth Andrews, Broker

(833) SOLD RES (833-765-3737) • www.RES.bid

Full Details & Pictures are Available at www.res.bid