



**LIVE AUCTION WITH
ONLINE BIDDING
@RES.BID
833.SOLD.RES**

Auction will be held on location on 7212 State Route 241 Millersburg,
3 miles west of Mount Hope and just over half a mile east of Benton.
Watch for RES signs.
Andy White • Joseph Mast • Drew Turner
Jake White • Seth Andrews, Broker
LIC# 2022000271 | 10% BUYER'S PREMIUM

SATURDAY, NOVEMBER 2ND @ 11AM



Real Estate: We present to you the "Wooded Peaks" subdivision. Situated in the heart of one of East Holmes most desirable locations, this 106 acre property offers unmatched privacy while also providing easy accessibility. The land is open and rolling surrounded by beautiful, wooded Holmes County hillsides. The property will be offered in 23 parcels, ranging in size from 1.8 to 11.9 acres with a good variety of acreages between. Whether you desire to build your retirement home on a manageable lot or need the space for pasture

and children, you will appreciate the options this property presents. The private engineered road will be completed to county regulations allowing each lot to be "shovel ready" for the new owners to start building their dream home right away. The location also presents the opportunity for commercial and business ventures capitalizing on Holmes County's vibrant economy. Regardless of your interests, this property deserves your time and attention and will sell to the highest bidder(s) with No minimums or reserves.

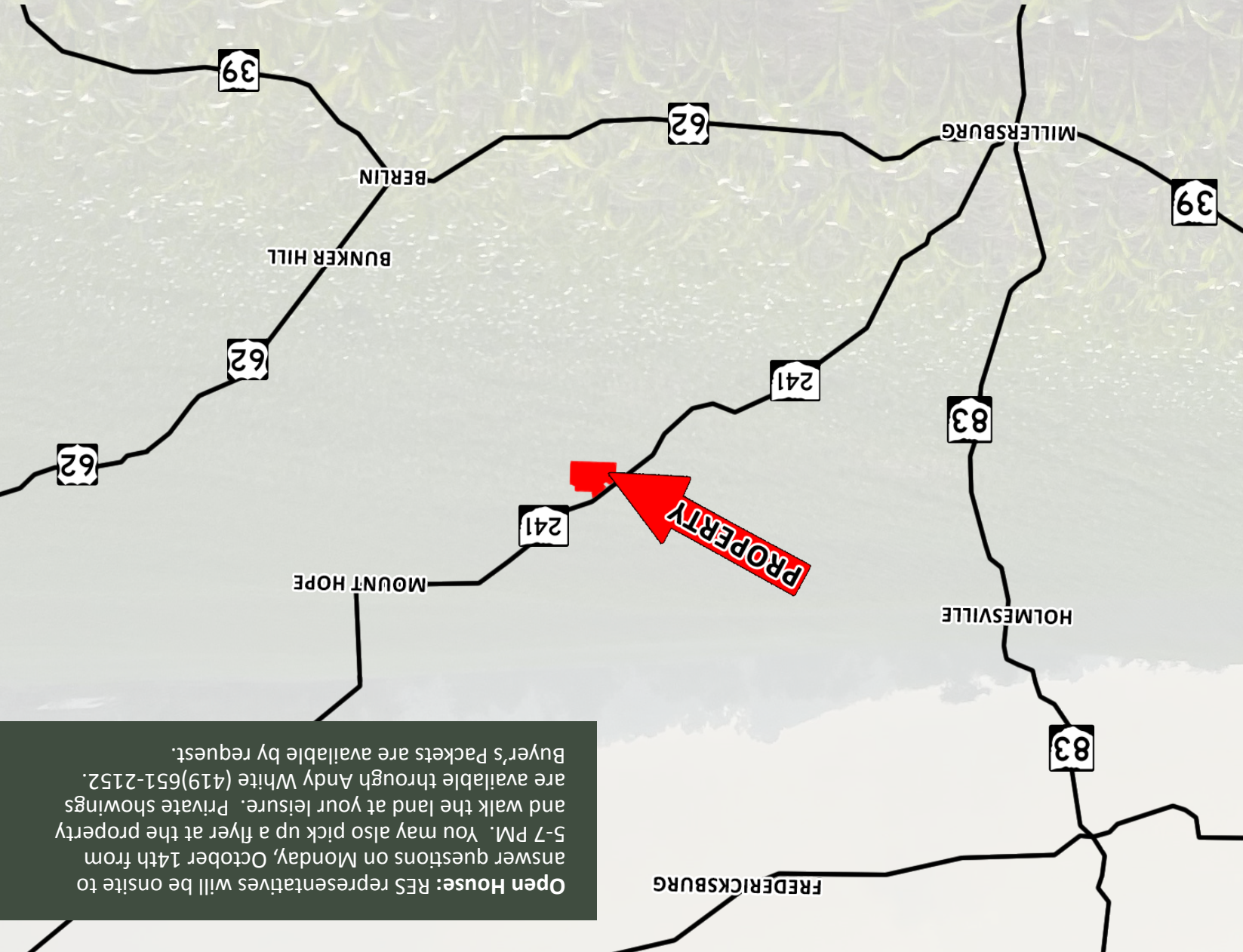
106± ACRES OFFERED IN 23 PARCELS

EAST HOLMES - HOLMES COUNTY, OH

ABSOLUTE LAND AUCTION

Mineral Rights: Oil and gas rights are held by production and retained by a previous seller.
Terms: The successful purchaser(s) will be required a non-refundable down payment of 10% at the auction with the balance due at closing after completion of final survey. A 10% buyer's premium will be added to the final bid to determine the final purchase price. Any county required septic design and plot plans will be at the buyer's expense. The owner is a licensed real estate agent.

Selling Order: We will sell each parcel by the acre with the winning bidder having the choice of whichever parcel(s) they desire. Once each parcel has a winning bidder, we will then offer the property in the following combinations:
Combination 1: Parcels 1-7
Combination 2: Parcels 8-13
Combination 3: Parcels 14-16 & 23
Combination 4: 17-22
The last offering will be the entire property together.



Open House: RES representatives will be onsite to answer questions on Monday, October 14th from 5-7 PM. You may also pick up a flyer at the property and walk the land at your leisure. Private showings are available through Andy White (419) 651-2152. Buyer's Packets are available by request.

**LIVE AUCTION WITH
ONLINE BIDDING
@RES.BID
833.SOLD.RES**

SATURDAY, NOVEMBER 2ND @ 11AM

ABSOLUTE LAND AUCTION

EAST HOLMES - HOLMES COUNTY, OH

- 23 PARCELS
- BUILDING LOTS
- EXCELLENT LOCATION

ABSOLUTE LAND AUCTION

EAST HOLMES - HOLMES COUNTY, OH

106± ACRES
OFFERED IN 23 PARCELS

- 23 PARCELS
- BUILDING LOTS
- EXCELLENT LOCATION



SATURDAY, NOVEMBER 2ND @ 11AM

RES AUCTION SERVICES LIVE & ONLINE
**LIVE AUCTION WITH
ONLINE BIDDING
@RES.BID
833.SOLD.RES** **106± ACRES
OFFERED IN 23 PARCELS**

Auction will be held on location on 7212 State Route 241 Millersburg, 3 miles west of Mount Hope and just over half a mile east of Benton. Watch for RES signs.
Andy White • Joseph Mast • Drew Turner • Jake White • Seth Andrews, Broker

LIC# 2022000271 | 10% BUYER'S PREMIUM



**LIVE AUCTION WITH
ONLINE BIDDING
@RES.BID
833.SOLD.RES**
The RES Yard
375 Fry Road
Wooster, OH 44691
LIC# 2022000271

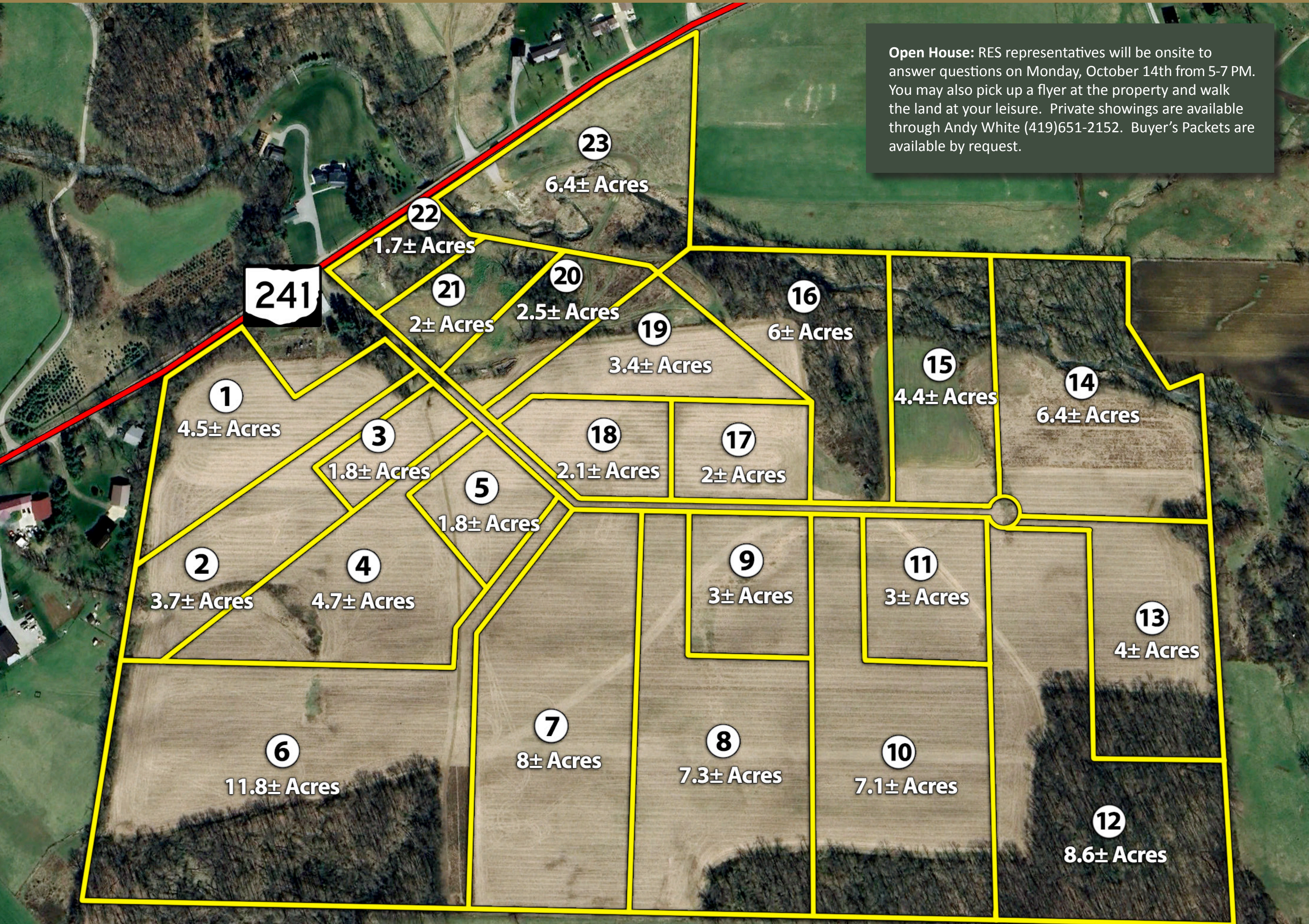


ABSOLUTE LAND AUCTION

EAST HOLMES - HOLMES COUNTY, OH

106± ACRES OFFERED IN 23 PARCELS

- 23 PARCELS
- BUILDING LOTS
- EXCELLENT LOCATION



PARCEL	ACRES	PRICE PER AC.	PARCEL	ACRES	PRICE PER AC.	PARCEL	ACRES	PRICE PER AC.
1	4.5		9	3		17	2	
2	3.7		10	7.1		18	2.1	
3	1.8		11	3		19	3.4	
4	4.7		12	8.6		20	2.5	
5	1.8		13	4		21	2	
6	11.8		14	6.4		22	1.7	
7	8		15	4.4		23	6.4	
8	7.3		16	6		-	-	

Combination 1: Parcels 1-7

Combination 2: Parcels 8-13

Combination 3: Parcels 14-16 & 23

Combination 4: 17-22

The last offering will be the entire property together.



SATURDAY, NOVEMBER 2ND @11AM



LIVE AUCTION WITH ONLINE BIDDING @RES.BID 833.SOLD.RES

Auction will be held on location on 7212 State Route 241 Millersburg, 3 miles west of Mount Hope and just over half a mile east of Benton. Watch for RES signs.

Andy White • Joseph Mast • Drew Turner • Jake White • Seth Andrews, Broker

LIC# 2022000271 | 10% BUYER'S PREMIUM