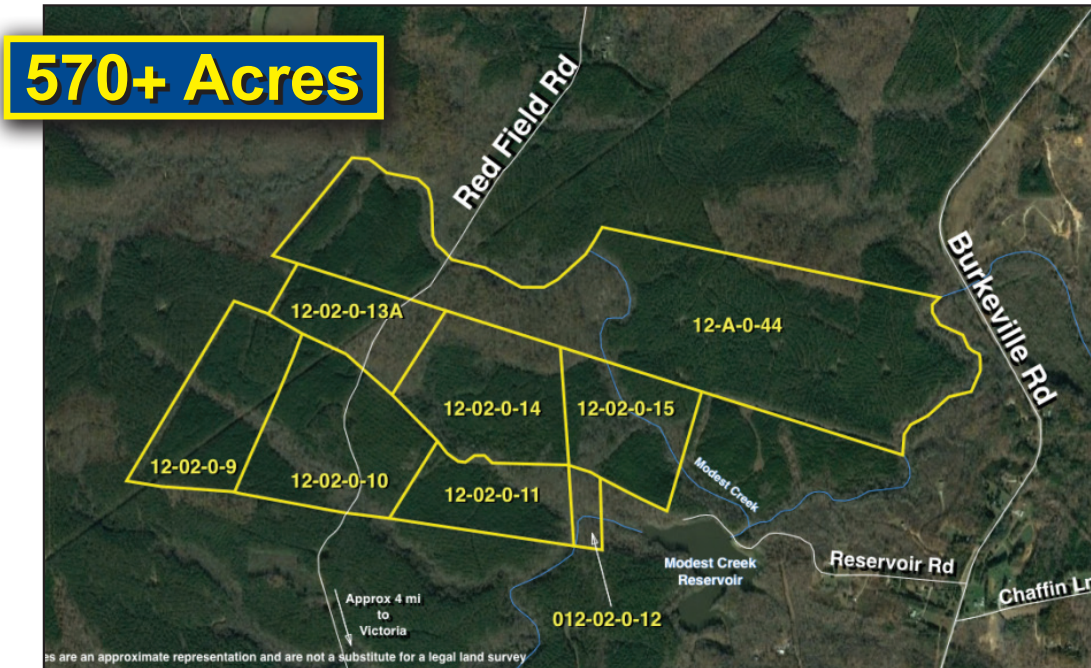


# 570 +/- ACRES of PRIME TIMBER LAND in LUNENBURG COUNTY, VA

## REAL ESTATE AUCTION

Wednesday, April 26, 2017 @ 3:45pm

Red Field Rd. – Victoria, VA 23974



From the Elma J. Watson Trust (Raymond O. Watson, Trustee): We have been contracted to market and sell this valuable timber tract at public auction. A recent timber cruise shows the desirability and value of this great land, and we look forward to entrusting it to the care of a new owner when you Bid Your Price!!

**NOTE: Auction will be conducted off site at 1900 9th St., Victoria, VA**

- 570 +/- acres of timber land in Lunenburg County, VA
- \$720,000 in timber value!!
- Tax Map: 012-0A-0-44; 570.29 Acres +/- Modest Creek 12(2)9,10,11,12,13A,14,15; Deed Book 245/523; Zoned: 6; Land Use: Agricultural

**Only \$250,000 Starting Bid!!**

Please preview the property at your leisure

**Please contact Sid Smyth at 434-955-0708 with all inquiries**



**NICHOLLS**  
Auction Marketing Group  
PREMIER SERVICE SINCE 1968  
VAAF 729  
[www.nichollsauction.com](http://www.nichollsauction.com)

ATTN REALTORS:  
Pre-register (by 5 pm 4/25/17)  
broker participation is compensated!!