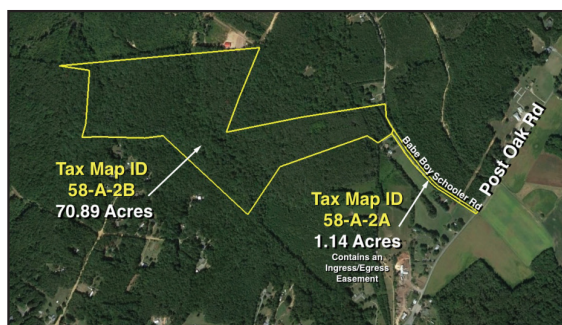


# FOUR RAW LAND AND WOODED TRACTS in SPOTSYLVANIA COUNTY, VA

## REAL ESTATE AUCTION Friday, April 21, 2017 at 10:00am 6901 Meeting St. – Spotsylvania, VA 22551

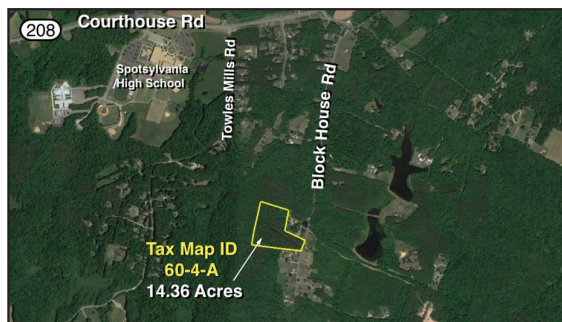


### Babe Boy Schooler Rd., Spotsylvania, VA 22551

NOTE: Auction conducted off site at the Lodge at Stevenson Ridge, 6901 Meeting St., Spotsylvania, VA

- 72.03 +/- acres sold as one tract
- Deeded easement off of Post Oak Rd onto Babe Boy Schooler Rd to large tract on left
- Tax Maps: 58-A-2A & 2B; Zoned: A-3

**Only \$25,000 Starting Bid!!**

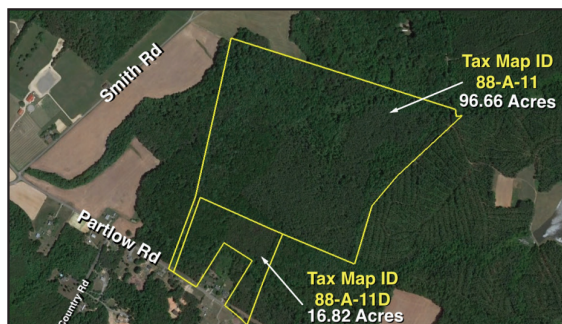


### 7000 Block House Rd., Spotsylvania, VA 22551

NOTE: Auction conducted off site at the Lodge at Stevenson Ridge, 6901 Meeting St., Spotsylvania, VA

- 14.36 +/- acre timber tract
- This property fronts Block House Rd. and is only minutes from Spotsylvania High School
- Tax Map: 60-4-A; Zoned: A-3

**Only \$10,000 Starting Bid!!**

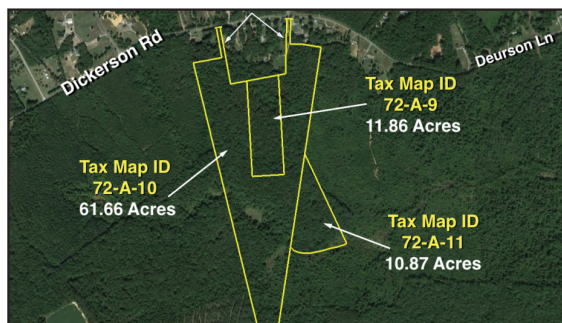


### 2301 Partlow Rd., Beaverdam, VA 23015

NOTE: Auction conducted off site at the Lodge at Stevenson Ridge, 6901 Meeting St., Spotsylvania, VA

- 113.48 +/- acres of timber land on Partlow Rd. (2 parcels) sold as one tract
- 2 areas of frontage on Partlow Rd. provide good ingress and egress
- Tax Maps: 88-A-11 & 11D; Zoned: A-3

**Only \$25,000 Starting Bid!!**



### 5223 Dickerson Rd., Partlow, VA 22534

NOTE: Auction conducted off site at the Lodge at Stevenson Ridge, 6901 Meeting St., Spotsylvania, VA

- 84.39 +/- acres (3 parcels) sold as one tract
- Two ingress and egress easements on Dickerson Rd.
- Tax Maps: 72-A-9, 10 & 11; Zoned: A-3

**Only \$25,000 Starting Bid!!**



[www.nichollsauction.com](http://www.nichollsauction.com)

ATTN REALTORS:  
Pre-register  
(by 5 pm 4/20/17)  
broker participation  
is compensated!!

**Need Financing for this purchase??**  
**Please contact Kelly Strauss**  
**at 540-226-1279**  
**with all inquiries**