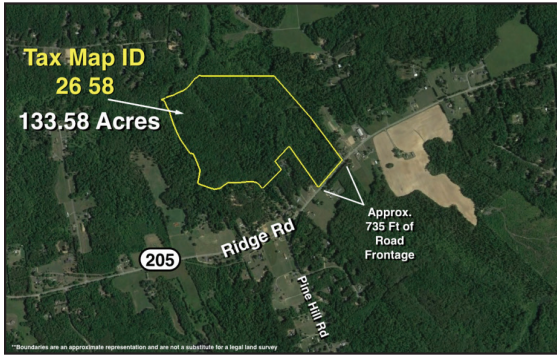


# REAL ESTATE AUCTIONS



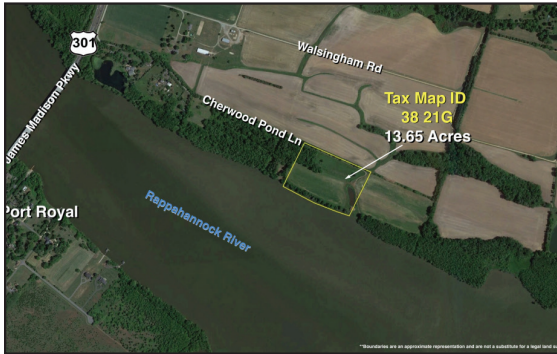
**FRIDAY, APRIL 28, 2017 – 9:00AM**  
**133 +/- ACRES w/700+' of FRONTAGE**  
**on RT. 205 in KING GEORGE COUNTY,**  
**VA—ZONED A-2**

**14182 Ridge Rd., King George, VA 22485**

- 133.58 +/- acres of well located raw timber land fronting Rt. 205 (Ridge Rd.)

- Approx. 735' of road frontage on Rt. 205
- This property is located only 10 miles from Naval Surface Warfare Center Dahlgren, and the by right zoning makes this a potential filled opportunity!!
- Tax Map: 26-58; Zoned: A-2, some by right uses single family homes, raising of animals, plant nursery/greenhouse, public use, riding stable, storage buildings, and more!!

**Only \$100,000 Starting Bid!!** *Please preview this property at your leisure*



**FRIDAY, APRIL 28, 2017 – 10:30AM**  
**2 GORGEOUS 13 & 18 ACRE**  
**RAPPAHANNOCK RIVER FRONT LOTS**  
**in KING GEORGE COUNTY, VA**

**Cherwood Pond Ln.,**  
**King George, VA 22485**

- 13.65 +/- acre Rappahannock River front lot w/a pond on the property
- 18.0 +/- acre Rappahannock River front lot
- These lots will be sold individually and have a total of approx. 1,800' of Rappahannock River frontage!!
- Only minutes from Rt. 301 and Rt. 17, these lots will be the perfect foundation for your River Front Home!!
- Tax Maps: 38-21G & 21H; Zoned: A-2

**Only \$50,000 Starting Bid!!** *Please preview these lots at your leisure*



**NICHOLLS**  
Auction Marketing Group  
PREMIER SERVICE SINCE 1968  
VAAF 729  
[www.nichollsauction.com](http://www.nichollsauction.com)

ATTN REALTORS:  
Pre-register  
(by 5 pm 4/27/17)  
broker participation  
is compensated!!

**Need Financing for this purchase??**  
**Please contact Kelly Strauss**  
**at 540-226-1279**  
**with all inquiries**