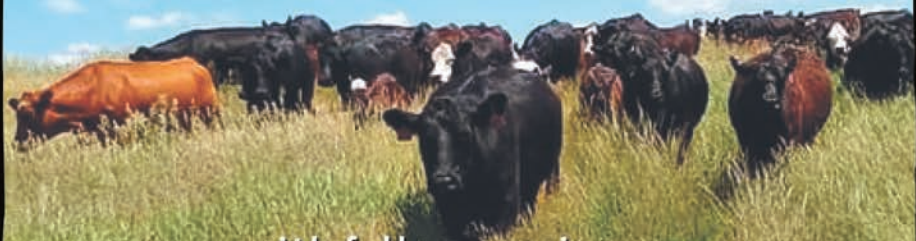


THYEN *Simmmentals*

FIRST ANNUAL PRODUCTION SALE



with fellow consignor:

SOLSAA ANGUS

FEBRUARY 20, 2021 @ 1:00

45142 183RD STREET
HAYTI, SOUTH DAKOTA

THYEN *Simmentals*

FIRST ANNUAL PRODUCTION SALE

with fellow consignor:

SOLSAA ANGUS

FEBRUARY 20, 2021 @ 1:00

LIVE VIDEO AUCTION

45142 183rd Street - Hayti, South Dakota
{3.5 miles West of Kones Korner}

CALL IN BIDS

MIKE 605-520-0575

ERIC 605-237-0984

TOM 605-881-5255

SKYLER 605-237-8820

NATHAN 605-881-0693

AUCTIONEER

Jim Thorpe

Bid Online!

If you are unable to attend the sale, you can register to watch or bid online through The Livestock Link. Details in pages to follow.

The **Livestock**™
Link

Livestock Videoing • Video Sales
• Bid-by-Click Online Sales

To view events go to
www.TheLivestockLink.com

WELCOME

On behalf of Thyen Simmentals and Solsaa Angus, we would like to extend an invitation to our First Annual Production Sale. We would like to say a huge thank you to our families and friends for all of the support and help they provided to make this sale a reality. Also a huge thank you to all our past customers and all who have shown interest in our programs. Please feel free to come look at the bulls anytime and contact us with any questions. Bulls can be seen at Thyen Simmentals, 3.5 miles West of Kones Korner, and Solsaa Angus, 4 miles South and a 1/2 mile East of Kones Korner.

We are excited for the future of the cattle industry and we look forward to talking cattle with you! We have a nice set of Simmental and Angus genetics that we feel will do a lot of things right. We are humbled and thankful for your interest and confidence in our programs.

We will see you sale day Saturday, February 20th, 2021.

Selling 36 Simmental, SimAngus, and PB Angus Bulls.

Guarantees and sale conditions will be announced sale day. We will have insurance available and we can keep the bulls until you need them.

SCHEDULE

Friday, February 19

All day viewing of cattle at both sites.

Saturday, February 20

9:00-1:00 Viewing of bulls at Thyen Simmentals

11:00-1:00 Complimentary Lunch

1:00 Sale

Thyen Simmentals & Solsaa Angus are not responsible for accidents.

THYEN *Simmentals*

45142 183rd St. - Hayti, SD
(3.5 miles West of Kones Korner)



Thyen Simmentals Sires:

Lock n Load
Harvie Wallbanger
True Justice
Dream On
TL Hi Lite
TSA Mr Uprising
Built Right

MIKE THYEN
605-520-0575

SOLSAA ANGUS

45417 186th St. - Hayti, SD
(4 miles South of Kones Korner)

Solsaa Angus Sires:

Musgrave Stunner 316

LD Capitalist 316

SAV President 6847

Koupals B&B Ft Knox 4122



ERIC SOLSAA
605-237-0984

1**TSA MR REBEL H020**

Black - 3/4 SM - ASA # 3797689

BD: 2/27/20**BW:** 100**WW:** 744

| CE | BW | WW | YW | MILK | MWW | DOC | REA | API | TI |
|-----|-----|------|-------|------|------|------|------|-------|------|
| 6.3 | 5.6 | 83.3 | 132.3 | 20.6 | 62.2 | 11.3 | 0.77 | 109.5 | 75.7 |

LLSF UPRISING Z925

TSA MR UPRISING E792

CNS-HFS ANTOINETTE X403

SSR BULL U33

TSA MISS U33 Y1053
U8061*The cattleman kind. Bigger frame bull with excellent docility. 8th calf by 1053.***2****TSA MR PILGRIM H021**

Black - PB SM - ASA # 3793927

BD: 2/28/20**BW:** 90**WW:** 749

| CE | BW | WW | YW | MILK | MWW | DOC | REA | API | TI |
|-----|-----|------|-------|------|------|------|------|-------|------|
| 8.6 | 3.0 | 77.3 | 109.8 | 22.0 | 60.6 | 10.4 | 0.84 | 112.4 | 71.6 |

WS PILGRIM H182U

TSA MR. PILGRIM E7112

BRANT MACHO MAE U215M

TNT TANKER U263

3C CROCUS Z2524 B**3C MS DESPERODO T7105 B***Super disposition on this PB all black bull. The cattle out of Pilgrim are very good.*

3

SAF PRESIDENT 602

AAA # 19936661

BD: 1/29/20
BW: 87
ADJ: 205
800

CE **BW** **WW**
5.0 2.3 71.0

YW **MILK**
121.0 20.0



COLEMAN CHARLO 0256
SAV PRESIDENT 6847
SAV BLACKCP MAY 4136

PRAIRIE PRIDE NEXT STEP 2036
SAF PRAIRIE PRIDE STAR 602
SAF UPSHOT STAR 407

*This bull has been a favorite all year. He's thick and powerful.
Keep every female.*

SAV PRESIDENT 6847



4

SAF PRESIDENT 532

AAA # 19936722

BD: 2/08/20
BW: 98
ADJ: 205
838

CE **BW** **WW**
0.0 3.6 77.0

YW **MILK**
127.0 21.0



COLEMAN CHARLO 0256
SAV PRESIDENT 6847
SAV BLACKCP MAY 4136

SAV RESOURCE 1441
SAF RESOURCE LASS 532
SAF LASS WORTH 919

*Another President son that is loaded with muscle.
Dam is easy fleshing with a great udder.*

5

TSA MR LOCK H098

Black - PB SM - ASA # 3797662

BD: 3/24/20

BW: 98

WW: 849

ET



| CE | BW | WW | YW | MILK | MWW | DOC | REA | API | TI |
|------|-----|------|-------|------|------|------|------|-------|------|
| 10.5 | 0.5 | 72.4 | 120.3 | 19.7 | 55.9 | 11.6 | 1.04 | 112.0 | 67.6 |

REMINGTON ON TARGET 2S
REMINGTON LOCK N LOAD54U
 BAR15 MISS KNIGHT78E-51G

HARVIE JDFWALLBANGER111X
HARVIE DAKOTA ROSE 11Z
 WS DAKOTA ROSE M86

Full brother to Lot 6.



6

TSA MR LOCK H096

Black - PB SM - ASA # 3794002

BD: 3/24/20

BW: 99

WW: 838

ET



| CE | BW | WW | YW | MILK | MWW | DOC | REA | API | TI |
|-----|-----|------|-------|------|------|------|------|-------|------|
| 9.5 | 3.2 | 87.7 | 141.2 | 19.7 | 63.5 | 12.6 | 1.05 | 110.8 | 73.9 |

REMINGTON ON TARGET 2S
REMINGTON LOCK N LOAD54U
 BAR15 MISS KNIGHT78E-51G

HARVIE JDFWALLBANGER111X
HARVIE DAKOTA ROSE 11Z
 WS DAKOTA ROSE M86

Lots 5 & 6 are full brothers. Harvie Dakota Rose 11Z is the Dam of Agribition Champion Harvie Red Summit. These two guys are big time herd bull prospects! They check all the boxes. Worth the trip to see them on February 20th!

7

SAF CAPITALIST 327

AAA # 19918224

BD: 2/06/20
BW: 96
ADJ: 205
869

CE **BW** **WW**
2.0 2.5 72.0
YW **MILK**
121.0 27.0



CONNEALY CAPITALIST 028
LD CAPITALIST 316
LD DIXIE ERICA 2053

WMR TIMELESS 458
MOGCK BLACK LASS 723
MOGCK BLACK LASS C101

Heaviest 205 day bull in the sale. If you sell steers by the pound or want to keep females, don't look any further. Don't let this one slip away.

LD CAPITALIST 316



8

SAF CAPITALIST 107

AAA # 19918223

BD: 2/11/20
BW: 85
ADJ: 205
864

CE **BW** **WW**
10.0 0.0 72.0
YW **MILK**
118.0 31.0



CONNEALY CAPITALIST 028
LD CAPITALIST 316
LD DIXIE ERICA 2053

SAV BISMARCK 5682
SAF ELLA BISMARCK 107
SAF ANALYST 905

A heifer bull with extra size and growth out of a productive Dam.

Bid Online!

If you are unable to attend the sale, you can register to watch or bid online through The Livestock Link by following these instructions:

The Livestock Link™

Livestock Videoing • Video Sales
• Bid-by-Click Online Sales

To view events go to

www.TheLivestockLink.com

- Visit our website, www.thelivestocklink.com
- Click the "Auctions" tab
- Click on "Click Here to Register"
- Enter your e-mail address and password, and fill out all your contact information
- Fill out your Banking Information. If you are only viewing the sale and do not wish to bid, this information can be left blank.
- Check the checkbox at the bottom of the page that says "I'm not a robot" to prove you are a real person
- Click "Register" at the bottom of the page
- You will receive an email with a link to activate your account.
- **Please register to bid at least 24 hours in advance of the sale.**
- Contact Aaron Friedt at (701) 590-9597 for help or with any questions.

You will receive an email when you are approved for bidding. All applications will be reviewed and processed promptly. You will receive a bidder number only after you have made a purchase in the sale, and that number will only be used at that sale. When the sale is completed, please contact the sale owner or manager for instructions of payment and delivery of your purchase.

To use our service, you must have access to High Speed Internet.

Questions?

Contact Aaron Friedt at (701) 590-9597 or Support at (605) 920-9261

www.TheLivestockLink.com

9**TSA MR HI LITE H069**

Black - 1/2 SM - ASA # 3793953

BD: 3/13/20**BW:** 90**WW:** 769

| CE | BW | WW | YW | MILK | MWW | DOC | REA | API | TI |
|-----|-----|------|-------|------|------|-----|------|-------|------|
| 8.2 | 2.8 | 85.8 | 129.8 | 29.1 | 71.9 | 9.2 | 0.75 | 113.0 | 81.3 |

TJ HIGH CALIBRE 556B
TL HI LITE 180
 TL MISS STAR 42B

TSA MISS Z257

One of my favorites. Lots 9 & 10 are sired by TL Hi Lite, our herd bull from Tree Lane Farms. Lots of good in both of these cowboy kind of bulls.

10**TSA MR HI LITE H072**

Black - 1/2 SM - ASA # 3802691

BD: 3/14/20**BW:** 95**WW:** 694

| CE | BW | WW | YW | MILK | MWW | DOC | REA | API | TI |
|-----|-----|------|-------|------|------|-----|------|-------|------|
| 5.3 | 4.6 | 86.1 | 131.2 | 25.7 | 68.7 | 9.7 | 0.82 | 104.2 | 72.9 |

TJ HIGH CALIBRE 556B
TL HI LITE 180
 TL MISS STAR 42B

ROCKIN H MR. BROKER B63
TSA MISS PENNY E762
 TSA MISS TANK B2

11

SAF STUNNER 803

AAA # 19886630

BD: 1/10/20

BW: 74

ADJ: 205
815

CE BW WW
8.0 0.3 70.0

YW MILK
124.0 25.0

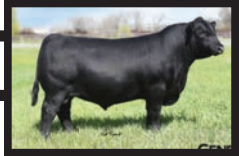


LD CAPITALIST 316
MUSGRAVE 316 STUNNER
MCATL BLACKBIRD 831-1378

PRAIRIE PRIDE NEXT STEP 2036
SAF NEXT STEP QUEEN 803
SAF ANGUS VALLEY QUEEN 620

This is one cool looking bull. He can be used on larger heifers.

MUSGRAVE STUNNER 316



12

SAF STUNNER 825

AAA # 19918263

BD: 1/27/20

BW: 71

ADJ: 205
780

CE BW WW
9.0 0.6 63.0

YW MILK
110.0 25.0



LD CAPITALIST 316
MUSGRAVE 316 STUNNER
MCATL BLACKBIRD 831-1378

SAV HARVESTOR 0338
SAF EDELLA HARVESTOR 821
TSA MISS NET WORTH A7

Another Stunner son with a low BW that can be used on heifers.

13**TSA MR HI LITE H074***Black - PB SM - ASA # 3794001***BD:** 3/15/20**BW:** 90**WW:** 766

| CE | BW | WW | YW | MILK | MWW | DOC | REA | API | TI |
|-----|-----|------|-------|------|------|-----|------|-------|------|
| 5.9 | 3.9 | 86.8 | 130.8 | 29.4 | 72.7 | 9.6 | 0.91 | 115.9 | 78.7 |

TJ HIGH CALIBRE 556B
TL HI LITE 180
 TL MISS STAR 42B

SSR BULL 44Y
MS RMH C3
 MS RMH MACHO U2

Another Hi Lite son. Goes back to SSR 44Y or Supertanker as he is known around here. Lots of muscle and excellent docility.

14**TSA MR HI LITE H070***Black - 1/2 SM - ASA # 3793984***BD:** 3/13/20**BW:** 100**WW:** 727

| CE | BW | WW | YW | MILK | MWW | DOC | REA | API | TI |
|-----|-----|------|-------|------|------|-----|------|-------|------|
| 4.8 | 4.7 | 87.7 | 134.7 | 27.6 | 71.4 | 9.5 | 0.83 | 102.9 | 74.5 |

TJ HIGH CALIBRE 556B
TL HI LITE 180
 TL MISS STAR 42B

SSR BULL 44Y
TSA MISS TANK A356
 TSA MISS X016

Bigger framed cowboy kind of bull. Another Dam out of Supertanker. Performance built in!

15

SAF STUNNER 812

AAA # 19886631

BD: 1/13/20

BW: 74

ADJ: 205
776

CE BW WW
7.0 0.7 69.0

YW MILK
103.0 24.0



LD CAPITALIST 316
MUSGRAVE 316 STUNNER
MCATL BLACKBIRD 831-1378

PRAIRIE PRIDE NEXT STEP 2036
SAF NICKY NEXT STEP 812
SAF SAF UPSHOT NICKY 641

*Another Stunner son that goes back to a great cow family.
He will add pounds to your feeder calves.*

16

SAF STUNNER 825

AAA # 19918265

BD: 1/08/20

BW: 72

ADJ: 205
777

CE BW WW
9.0 -0.4 66.0

YW MILK
115.0 23.0



LD CAPITALIST 316
MUSGRAVE 316 STUNNER
MCATL BLACKBIRD 831-1378

SAV RESOURCE 1441
SAF LASS RESOURCE 825
MOGCK BLACK LASS 723

*This bull is loaded with maternal strength.
Goes back to MOGCK 723 cow. Dam of Lot 7.*

HAMLIN COUNTY
HCFC
FARMERS COOP

**Hayti
Hazel
Lake Norden**

J&R Distributing Inc
Lake Norden, SD 57248
800-658-5540



**Feeds for all your
livestock needs.**



17

TSA MR NEW DIRECTION H03

Red - 1/2 SM - ASA # 3797683

BD: 2/17/20

BW: 84

WW: 647



| CE | BW | WW | YW | MILK | MWW | DOC | REA | API | TI |
|------|-----|------|------|------|------|-----|------|-------|------|
| 10.7 | 0.7 | 63.5 | 96.5 | 19.6 | 51.3 | 7.5 | 0.63 | 106.6 | 68.5 |

HSF BETTER THAN EVER
GLS NEW DIRECTION X184
 GLS N6

C441

A real nice made red blaze bull out of a nice soggy, honest red cow.

18

TSA MR TOP GUN H04

Red - 1/2 SM - ASA # 3797684

BD: 2/18/20

BW: 86

WW: 731



| CE | BW | WW | YW | MILK | MWW | DOC | REA | API | TI |
|-----|-----|------|-------|------|------|-----|------|-------|------|
| 7.9 | 3.3 | 85.2 | 131.1 | 17.1 | 59.7 | 7.0 | 0.74 | 103.6 | 69.0 |

TNT GUNNER N208
TNT TOP GUN R244
 TNT MISS SADIE M68

ROCKIN H MR. BROKER B63
TSA MISS PENNY E798
 TSA MISS ND B04

A real meat wagon PB all red bull by Top Gun.

19

SAF FORT KNOX 415

AAA # 19918228

BD: 2/29/20

BW: 85

ADJ: 205
798

CE BW WW
5.0 1.8 66.0

YW MILK
110.0 24.0

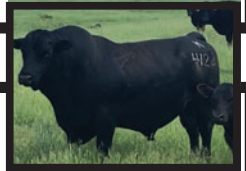


KOUPALS B&B FORT KNOX 2077
KOUPALS B&B FT KNOX 4122
KOUPALS QUEEN 4150

SAV HARVESTOR 0338
SAF 614 NICKY HARVESTOR 415
SAF BG DESIGN NICKY 614

These Fort Knox sons are easy fleshing with lots of power.

KOUPALS B&B FT KNOX 4122



20

SAF FORT KNOX 641

AAA # 19886627

BD: 3/6/20

BW: 83

ADJ: 205
751

CE BW WW
6.0 1.2 62.0

YW MILK
106.0



KOUPALS B&B FORT KNOX 2077
KOUPALS B&B FT KNOX 4122
KOUPALS QUEEN 4150

SAF UPSHOT 138
SAF SAF UPSHOT NICKY 641
SAF DENSITY NICKY 419

*Lot 19 and 20 go back to my top flush cow that never misses. Keep every female.
Youngest Angus on the sale.*

21**TSA MR HI LITE H073**

Black - PB SM - ASA # 3793976

BD: 3/14/20**BW:** 100**WW:** 765

| CE | BW | WW | YW | MILK | MWW | DOC | REA | API | TI |
|-----|-----|------|-------|------|------|------|------|-------|------|
| 6.3 | 5.6 | 83.3 | 132.3 | 20.6 | 62.2 | 11.3 | 0.77 | 109.5 | 75.7 |

TJ HIGH CALIBRE 556B
TL HI LITE 180
 TL MISS STAR 42B

3C MACHO M450 BZ
TSA MISS MAHO 11
 HS UP IN THE STARS Y18T

*Real moderate frame, soggy, and deep kind of bull.
 Should make some nice feeders and easy keepers.*

22**TSA MR HI LITE H097**

Black - 3/4 SM - ASA # 3793979

BD: 3/24/20**BW:** 95**WW:** 758

| CE | BW | WW | YW | MILK | MWW | DOC | REA | API | TI |
|-----|-----|------|-------|------|------|------|------|-------|------|
| 6.6 | 4.1 | 84.9 | 131.3 | 25.3 | 67.6 | 10.0 | 0.78 | 105.8 | 74.3 |

TJ HIGH CALIBRE 5568B
TL HI LITE 180
 TL MISS STAR 42B

SVF STAR POWER S802
TSA MISS STAR POWER C39
 TSA MISS X0143

*Another one of my favorites.
 Just a real good bull that will do a lot of things right.*

23

SAF FORT KNOX 301

AAA # 19936788

BD: 2/24/20
BW: 94
ADJ: 205
812

CE **BW** **WW**
3.0 2.9 73.0
YW **MILK**
121.0 21.0



KOUPALS B&B FORT KNOX 2077
KOUPALS B&B FT KNOX 4122
KOUPALS QUEEN 4150

SAV FINAL ANSWER 0035
SAV FINAL ANSWER ERICA 301
SAV ERICA 1108

This guy could have started the sale. Out of a big broody cow that never misses. We bought the Grand Dam from Schaff Angus in ND.

24

SAF PRESIDENT 611

AAA # 19936659

BD: 2/03/20
BW: 98
ADJ: 205
757

CE **BW** **WW**
-1.0 4.4 68.0
YW **MILK**
115.0 20.0



COLEMAN CHARLO 0256
SAV PRESIDENT 6847
SAV BLACKCAP MAY 4136

RB TOUR OF DUTY 177
SAF TOUR DUTY BLUEBLOOD 611
SAF BLUEBLOOD 401

Another President son that is thick and Dam is picture perfect.

25**TSA MR AUTHORITY H081***Red - PB SM - ASA # 3794005***BD:** 3/19/20
BW: 99
WW: 730
ET

| CE | BW | WW | YW | MILK | MWW | DOC | REA | API | TI |
|-----|-----|------|-------|------|------|------|------|-------|------|
| 7.6 | 3.3 | 76.2 | 120.8 | 23.2 | 61.2 | 11.8 | 0.97 | 102.6 | 67.8 |

NF TRUMP S582
CDI AUTHORITY 77X
CDI MS CROCKET 88T**HARVIE JDFWALLBANGER 111X**
HARVIE DAKOTA ROSE 11Z
WS DAKOTA ROSE M86

Lots 25 & 26 are full brothers. One red and one black. They are both really well made, nice bulls by CDI Authority. Red or black... can't go wrong!

26**TSA MR AUTHORITY H0103***Black - PB SM - ASA # 3793977***BD:** 3/25/20
BW: 99
WW: 776
ET

| CE | BW | WW | YW | MILK | MWW | DOC | REA | API | TI |
|-----|-----|------|-------|------|------|------|------|-------|------|
| 7.1 | 3.9 | 79.7 | 129.7 | 23.2 | 63.0 | 14.3 | 1.08 | 110.2 | 71.0 |

NF TRUMP S582
CDI AUTHORITY 77X
CDI MS CROCKET 88T**HARVIE JDFWALLBANGER 111X**
HARVIE DAKOTA ROSE 11Z
WS DAKOTA ROSE M86

Full brother to Lot 25.

Blueprint®

NUTRITION PROGRAM

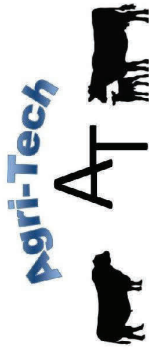
Blueprint® is a premium nutrition program designed to build on genetic potential.

- Utilizes Total Replacement Technology including Bioplex® and Sel-Plex®
- Easily absorbed and readily metabolized
- Maximizes reproductive performance
- Optimizes animal health



HUBBARD

an **Agri-Tech** company



For more information, contact:

Agri-Tech

Watertown, SD: 605-882-7015

Brookings, SD: 605-692-0995



27

SAF PRESIDENT 647

AAA # 19936658

BD: 2/02/20

BW: 98

ADJ: 205

756

CE BW WW
-2.0 4.7 64.0

YW MILK
108.0 17.0



COLEMAN CHARLO 0256
SAV PRESIDENT 6847
SAV BLACKCAP MAY 4136

JANKORD CONSENSUS 448
SAF BLUEBLOOD CONSENSUS 647
STASSENS BLUEBLOOD LADY 1A

This bull goes back to the cow we got at the Stassens dispersal and has done a really good job for us.

28

SAF CAPITALIST 827

AAA # 19918266

BD: 1/22/20

BW: 85

ADJ: 205

767

CE BW WW
2.0 1.5 64.0

YW MILK
114.0 28.0



CONNEALY CAPITALIST 028
LD CAPITALIST 316
LD DIXIE ERICA 2053

SAV TEN SPEED 3022
SAF LASS 10 SPEED 827
SAF LASS WORTH 919

This guy has lots of growth and will put pounds on your calves.

29

TSA MR WALLBANGER H0151

Black - PB SM - ASA # 3802701

BD: 4/02/20

BW: 92

WW: 827



| CE | BW | WW | YW | MILK | MWW | DOC | REA | API | TI |
|-----|-----|-------|-------|------|------|------|------|------|------|
| 8.8 | 3.2 | 100.1 | 161.5 | 20.0 | 70.0 | 13.6 | 1.13 | 99.5 | 79.7 |

SHS ENTICER P1B
HARVIE JDFWALLBANGER111X
JDF PEPSI 1U

W/C EXECUTIVE ORDER 8543B
HILB/MPC EXEC BECKY
MILLIRON/GLS BLACKOUTB86

Big time stud here! Outcross genetics that will add pounds!

30

TSA MR WALLBANGER H0125

Black - PB SM - ASA # 3793895

BD: 4/01/20

BW: 88

WW: 722



HARVIE JDFWALLBANGER

| CE | BW | WW | YW | MILK | MWW | DOC | REA | API | TI |
|-----|-----|------|-------|------|------|------|------|-------|------|
| 8.0 | 3.2 | 88.4 | 137.5 | 17.2 | 61.4 | 10.9 | 0.83 | 101.0 | 73.3 |

SHS ENTICER P1B
HARVIE JDFWALLBANGER111X
JDF PEPSI 61U

MR NLC UPGRADE U8676
HS UP IN THE STARS Y18T
HS EXECTED STAR U215M

Another solid PB bull by Wallbanger Outcross genetics.

31

TSA MR ROSEBUILT H084

Red - PB SM - ASA # 3797668

BD: 3/20/20

BW: 88

WW: 734

ET



| CE | BW | WW | YW | MILK | MWW | DOC | REA | API | TI |
|------|-----|------|-------|------|------|-----|------|-------|------|
| 10.7 | 2.6 | 75.4 | 112.5 | 21.4 | 59.1 | 8.0 | 0.69 | 104.4 | 67.0 |

CNS DREAM ON L186

SVF/NJC BUILT RIGHT N48

NJC EBONY ANTOINETTE

HARVIE JDFWALLBANGER111X
HARVIE DAKOTA ROSE 11Z
WS DAKOTA ROSE M86

Red Blaze by Built Right and Dakota Rose 11Z. All our calves by Harvie Dakota Rose are awesome. Be sure to check out his 2 sisters in replacement pen!

32

TSA MR JUSTICE H046

Black - 1/2 SM - ASA # 3797691

BD: 3/07/20

BW: 70

WW: 713



| CE | BW | WW | YW | MILK | MWW | DOC | REA | API | TI |
|------|------|------|-------|------|------|------|------|-------|------|
| 13.2 | -0.5 | 77.8 | 115.8 | 28.0 | 66.8 | 10.2 | 0.81 | 130.0 | 81.6 |

BDV TRUE GRIT 11X

BBS TRUE JUSTRIC B10

BBS MISS JUSTICE Z7

F880

He is a real nice True Justice out of a first calf heifer. Heifer bull.

33

TSA MR LOCK H0156

Black - PB SM - ASA # 3793948

BD: 4/02/20

BW: 100

WW: 775

ET



| CE | BW | WW | YW | MILK | MWW | DOC | REA | API | TI |
|-----|-----|------|-------|------|------|------|------|-------|------|
| 9.4 | 2.5 | 79.0 | 127.7 | 19.7 | 59.2 | 11.2 | 1.13 | 105.2 | 68.9 |

REMINGTON ON TARGET 2S
REMINGTON LOCK N LOAD54U
BAR15 MISS KNIGHT78E-51G

HARVIE JDFWALLBANGER111X
HARVIE DAKOTA ROSE 11Z
WS DAKOTA ROSE M86

Another Lock n Load x Dakota Rose, only he is a blaze!

34

TSA MR DREAM H058

Black - PB SM - ASA # 3793904

BD: 3/10/20

BW: 80

WW: 792



| CE | BW | WW | YW | MILK | MWW | DOC | REA | API | TI |
|------|-----|------|-------|------|------|-----|------|-------|------|
| 11.9 | 1.9 | 84.6 | 120.0 | 24.4 | 66.6 | 8.0 | 0.92 | 127.7 | 80.1 |

NICHOLAS LEGACY G151
CNS DREAM ON L186
CNS SHEEZA DREAM K107W

SSR BULL 12B
TSA MISS FAE F84
SA MISS TANK B24

Dream On son out of a first calf heifer. Real nice bull.

35

TSA MR DREAM H068

Black - PB SM - ASA # 3793902

BD: 3/12/20

BW: 75

WW: 716



| CE | BW | WW | YW | MILK | MWW | DOC | REA | API | TI |
|------|-----|------|-------|------|------|-----|------|-------|------|
| 11.7 | 1.5 | 75.8 | 106.7 | 21.8 | 59.6 | 7.5 | 0.90 | 121.7 | 73.5 |

NICHOLAS LEGACY G151
CNS DREAM ON L186
 CNS SHEEZA DREAM K107W

ROCKIN H MR. BROKER B63
TSA MISS FRIDAY F8161
 TSA MISS RED MIDNIGHT

Another Dream On son out of a first calf heifer.

36

TSA MR DREAM H067

Black - 3/4 SM - ASA # 3843430

BD: 3/12/20

BW: 80

WW: 779



| CE | BW | WW | YW | MILK | MWW | DOC | REA | API | TI |
|------|-----|------|------|------|------|-----|------|-------|------|
| 12.9 | 0.7 | 67.6 | 98.7 | 16.6 | 58.9 | 9.2 | 0.87 | 119.8 | 67.2 |

NICHOLS LEGACY G151
CNS DREAM ON L186
 CNS SHEEZA DREAM K107W

REMINGTON LOCK N LOAD54U
TSA MISS LOCK 61.4
 61.4

A special lot that combines both our programs. 61.4 was a standout at Solsaa Angus. We bred her to Lock n Load. Here is her first calf. SimAngus at its best.



**CASTLEWOOD
FARMERS ELEVATOR**

**Offer's Great Feed/Seed/Fertilizer
Services**

To Make Your Farm Goals Achievable!



Follow Us On Facebook!
Contact Us: (605)793-2192

THYEN
Simmentals

45142 183rd Street
Hayti, SD 57241