



# NATURAL WAY CHEESE & BAKERY LIQUIDATION AUCTION

Due to closing operations the following will be offered at Public Auction. LOCATED: 2 miles North of Clare, MI on Clare Ave (Old 27) to Beaverton Rd. Then 2 1/4 miles East to Sale Site - 6060 East Beaverton Rd., Clare, MI 48617. Follow Yoder Bros Auction Signs!

## THURSDAY, DECEMBER 1ST, 2022 @ 10:00 AM • CLARE, MI

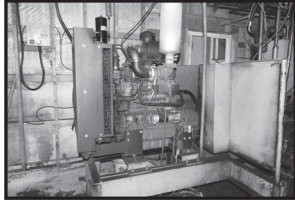


### DIESEL POWER UNITS and COOLING EQUIPMENT

- **PERKINS** Mod 1106 Diesel Motor w/clutch, 12074 Hrs., SN 402913 Good Cond.
- **KUBOTA** Mod B3800T Diesel Motor, 95 HP, 16,0303 Hrs., SN 2EQ1705 Good Cond.
- (3) **THERMO KING** Freon Cooling Compressors on Sliding Motor Mount, 1 Has 12 Volt Clutch
- **2021 MECCALITE** 10 KW Generator, Belt Drive w/ Switch Box
- **METARIS** Hydraulic Pump, 12 G.P.M. w/40 Gal Hyd Tank, Motor & Hyd Stand Frame w/ 2" x 6' Line Shaft
- (3) 21 Lb. Refrigeration Receiving Tanks
- (3) Suction Line Accumulators
- **QUINCY** Mod 5120 Air Compressor, V-Twin, 4 Cyl 25 C.F.M.
- **FUNK** Hydraulic Drive, 4 Pad Hyd. System, 80 G.P.M. w/Omega Coupler and Pulley, 200 Gal Hydr Tank w/ All Relieve Valves
- (3) 10 HP Condensor Units
- 2 **INTERSTATE** 950 AMP Batteries

### ENGINE and POWER ROOM NO. 2 INCLUDES THE FOLLOWING ITEMS

- **KUBOTA** V3600 Diesel Motor w/Centrifugal Clutch, 70 HP 28.713 HRS, SN 2CQ2559



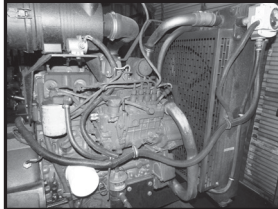
- **MECCALITE** 10 KW Belt Drive Generator
  - (3) **THERMO KING** Freon Compressors w/12Volt Clutches
  - (3) 5 HP Condensor Units
  - Motor Frame Stand 6'x7' w/2"x6' Linshaft
  - (2) **INTERSTATE** 950 AMP Batteries
  - Approx. 80' 1 1/4" Copperline
  - Approx. 60' 1 1/8" Copperline
  - Approx. 100' 7/8" Copperline
- ITEMS WILL BE OFFERED INDIVIDUALLY AND AS A COMPLETE UNIT*

### SEMI VAN with REEFER UNIT

- 48' **DORSEY** Semi Van Trailer w/ Insulated Sides, Alum. Floor, Carrier x2-2500R Reefer Unit, Cooling & Heating w/Auto Switch Temperature Control, 12.645 Hrs. in Good Working Condition

### SHOP and OUTDOOR MISC.

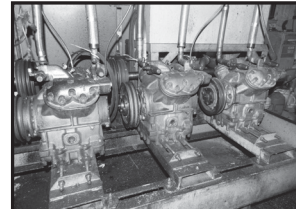
- **HUSQVARNA** 385XP Chain Saw w/32" Blade • 8'x24' Truck Box Stoarge Van • 500 Gal. Air Tanks • **PREDATOR** 6500 Watt Generator •



- **VULCAN** Tig Welder on Cart • **TITAN** Tig Stick & Wire Feed Welder • **DEWALT** Cordless Tools • (2) 12' Roller Stands
- 9 Milk Grade Milk Cans • Water Trough • 2 Bulk Milk Tanks & Beams • Welding Table w/Vise • 14' Step Ladder • 6 & 8' Step Ladders
- **HONDA** Transfer Pump • **SAMLEX** Inverter • Air Hoses • Water Hoses • 5' Alum Dolly
- S.S. LP 30 Gal Hot Water Kettle • Pallet Jack

### PALLET RACKING and BUILDING MATERIALS

- 2 PC 32' Tear Drop Pallet Racking, 3 Shelf X 15' High. 8' Sections
- 2 PC 9' Tear Drop Pallet Racking, 2 Shelf x 6' High
- 8' x 15' High, 4 Shelf Pallet Racking
- 2 PC Tear Drop Pallet Racking, 10' x 15' High / 2 Shelf
- 20 PC 8' x 30' x 1/2" Hi-Mac Corrigan Shelving Boards
- 48 PC Wire Pallet Racking Shelving
- Approx. 75 PC 4' x 8' x 1/2" Plywood
- Quantity of Corrugated Interlocking Paneling 16" Wide by Various Lengths
- ASST. 36" Doors w/Jams
- 70+ Plastic Pallets



### BAKERY and KITCHEN EQUIPMENT

- **MIDDLEBY MARSHALL** Mod PNL15 6 Shelf Unit Rotissory Oven, LP or Natural Gas, SN: 77255
- **UNIVEX** Mod N-6, 60 Qt Variable Speed Mixer w/ Accessories, SN: 627012-3
- **HOBART** A-200, 20 Qt Mixer w/Air Motor & Accessories, SN: 1779711
- **HOBART** II Tray Refrigerator, 120 Volt Electric
- **ANETSBERGER** 5 Burner Deep Fryer w/S.S. Hood & Pipe, LP or Natural Gas
- **HOBART** 1612E Meat Slicer, 120 Volt Electric, SN: 561-082-790
- 10' S.S. 3 Bottom Sink • 6' Work Table w/S.S. Top
- 7' x 30" S.S. Prep Table • 27" x 18" Drying Racks w/ Trays • S.S. Donut Glazing Table • 24 x 18" S.S. Cart
- Cream Stick Filler • 10 **METRO** Shelving Units - Various Sizes • **OLIVER** 32-A Bread Slicer • **SUNSTAR** 24 Volt Chest Freezer, Up To 20 Degrees Below • (2) **SUNSTAR** 12 or 24 Volt Fridges • 2 Dometic LP Fridges • **WESTINGHOUSE** Half Size Stove • 30+ Bread Pans • S.S. Bowls • Rolling Pins • Assorted Kitchen



- Utensils • 14 PC 2' x 3' Adjustable Plastic Shelving • (2) 6' Oak Wall Cabinets

### OFFICE and MISC. ITEMS

- Rolltop Desk • Oak Office Desk • (2) 4 Drawer File Cabinets • Knee Hole Desk • 2 Drawer File Cabinets • (3) 8' Lifetime Tables • Medal Locker Cabinets • **RUBBERMAID** Storage Containers • (2) Swivel Chairs • Folding & Stackable Chairs • Metal Wall Mount Cabinets • **CAS** Label Maker

### OTHER MISC.

- Rollaround Disposal Barrels
- Rollaround 7' Steps Utility Carts • Brooms • Mops & Buckets • Asst. Cleaning Supplies • 20+ Pairs Crocks & Boots • 200+ Plastic Stackable Milk Crates - Med. & Large Size • Quantity of 4" Mini Shrink Wrap Rolls • 500+ Gallon Jugs • Approx. 1000 - 25 Oz. Maple Syrup Jars • Misc. Goodie Wagon!

### MANY MORE ITEMS TOO NUMEROUS TO MENTION!



FOR 100+ PHOTOS SEE GoToAuction.com/2109

## NATURAL WAY CHEESE & BAKERY

**AUCTIONEERS NOTE:** Sale Order - Misc. Items @ 10:00 am; Bakery Equipment Selling at 12:00 Noon; Followed by Diesels and Power Units. Most all items are in good useable condition. Hope to see you there! - *LeRoy*

## Yoder Brothers Auction Service

Specializing in Successful Auctions

Auctioneers LeRoy and Willis Yoder

9484 S. Rodgers Ave., Clare, MI • PH: 989-386-9082



**AUCTION TERMS:** Cash or approved check with proper I.D. Nothing to be removed until settled for. Not responsible for accidents. Lunch on grounds. All announcements made day of sale take precedence over all printed materials. Out of state buyers must have bank letter of credit.