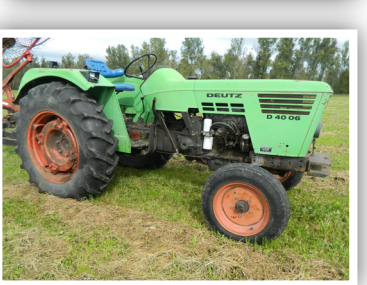




LARGE MOVING AUCTION

We are moving out of state and will offer the following at Public Auction. LOCATED: 5 Miles south of Scottville, MI on S. Scottville Road to Hawley Rd. East one mile to Darr Rd. North 1/2 mile to Sale Site. 4121 South Darr Road – Scottville, MI 49454. Follow Yoder Bros. Auction Signs!

SATURDAY, NOVEMBER 6TH, 2021 @ 9:30 a.m. - Scottville, MI



TRACTORS & SKIDSTEERS

- **NEW HOLLAND T4.75** Tractor w/655T Loader, 4x4 Shuttle Shift, Cab. Heat, Air, 8x8 Trans, 3389 Hrs. 3pt. Dual Hyd Outlets. 16.9R-30 Rear Tires. SN ZDAE01329
- **MUSTANG MT L25** Posi Trac Loader. 2 Speed, Joy Stick Controls, 96hp, Hyd Outlets, Quick Attach., New Snow & Mud Rubber Tracks
- **BOBCAT 443** Skidsteer w/Rebuilt Kubota Engine
- **DEUTZ ALLIS 7085** Tractor, 4x4 w/200 hp, 6 cyl Deutz Diesel, 3pt 540/1000 pto. Hyd Outlets, 460-85-R38 Rear Tires. SN 74350593
- **DEUTZ DX110** Tractor, 2 Wheel Drive, Cab, 540/100 Pto, 3pt Dual Hyd. Outlets. 18-4-38 Rear Tires. SN 76201080
- **DEUTZ D100-06** Tractor, 4x4, 3pt, Hyd Outlets. 7928-158 Rear Tires
- **DEUTZ D40-06** Tractor, 3pt Hyd Outlets SN 75388118
- **TYM MILLENIUM T280** Tractor w/Loader 4x4. 28hp Kubota Diesel, 3 pt, Hyd Outlets, 1600 Hrs. SN 511019
- **1949 JOHN DEERE B** Tractor N/F w/Cultivator Attachment, Elect. Start
- **1941 JOHN DEERE H** Hand Start SN 29229
- **1952 JOHN DEERE M.C.** Crawler Dozer, Orig. Cond. Runs

TRUCKS and TRAILERS

- **2007 FREIGHTLINER M2-106** 26' Box Truck, 6 Speed Trans, Mercedes Diesel, Air Ride Seat. 518,000 Miles
- **2004 FORD RANGER** Ext Cab, 4x4, Automatic, New Tires. 204,950 Miles
- **1987 EAGER BEAVER** 18' Tri Axle Trailer w/ Ramps. 22,600 GVW
- **16' Tandem Axle Trailer** w/Winch
- **JACKSON** 16' Livestock Trailer w/Newer Floor
- **MTI** 4x8 Enclosed Trailer
- **BAJA WARRIOR** 196cc Motor Bike

HAY and FORAGE EQUIPMENT

- **NEW HOLLAND 644** Round Baler, Silage Spec. Net Wrap & Twine Tie. Field Ready. New belts this year. SN 971104
- **NEW HOLLAND 644** Round Baler, Silage Spec. Net Wrap & Twine Tie. Endless Belts. Field Ready. SN 951814

- **KUHN SC303GC** Discbine 9.5' Hydro Swing
- **NEW HOLLAND 499** Discbine 12' Hydro Swing
- **PEERLESS 8** Wheel V Rake
- **I.H. Roll a Bar** Rake
- **RANCH RITE 4** Basket Hay Tedder
- **DEUTZ ALLIS 4** Basket Hay Tedder, Needs Repair
- **3 pt 4 Wheel Rake**
- **F.M. Rotary Rake**
- **NEW HOLLAND BR7090** 5' Round Baler, For Parts
- **NEW HOLLAND 24** Whirl-A-Feed Silage Blower
- **NEW HOLLAND 782** Forage Chopper w/Hay head & 824 2 Row Narrow Corn Head
- **GEHL 960** Forage Wagon

OTHER FARM EQUIPMENT

- **PIONEER 4** Sect Spring Tooth Drag
- **14' Hyd Lift Disc**
- **JOHN DEERE 210** Disc
- **WHITE 4** Bot. Semi Mnt Plow
- **BRILLION 6'** Chisel Plow
- **MELROE 14'** Grain Drill
- **NEW IDEA 3629** Manure Spreader
- **I.H. 100** Manure Spreader
- **VICON 60'** Field Sprayer
- **PARKER** Gravity Wagon
- **PIONEER** Wagon w/Brakes
- **FARM TEC** Fodder System

3 PT and QUICK ATTACH EQUIPMENT

- **I.J. 9' 3pt** Dbl Sickle Bar Mower
- **KING KUTTER 5' 3pt** Tiller Gear Drive
- **RHINO 5' 3pt** Brush Hog
- **3pt 8' Box Blade**
- **3pt Loggers** Winch w/Blade
- **3pt 4' Back Blade**
- **3pt Lucknow 91"** Snow Blower
- **JD 3pt 12"** Post Hole Auger
- **WOLVERINE** Quick Attach Post Hole Auger 12" & 18" Augers
- Like New **FARM KING 600 60"** Snow Blower Quick Attach
- **2- Quick Attach 8' Hyd Tilt** Snow Plows
- **BOBCAT** Quick Attach 84" Power Broom
- Quick Attach 10' to 18' Truss Boom
- Quick Attach 6' to 10' Truss Boom
- Bale Spear

PORTABLE BUILDINGS and SHELTERS

- **16' x 32'** Metal Garage, Finished & Wired
- **14' X 30'** Mini Barn Shop, Insulated & Wired
- **30' x 60'** Hoop Building
- **40' Metal** Shipping Container
- **22' THERMO KING** Cooler Van Box
- **40' x 80'** Tent
- **12' x 20'** Hoop Style Portable Chicken Shelters

SHOP RELATED ITEMS & JLG SCISSOR LIFT

- **JLG 2033E** 20' Scissor Lift, 750 lbs cap. SN 0200030297
- **ATLAS TC289** Tire Changer w/Elect Turn Table
- **FMC 4100** Digital Wheel Balancer
- **BRANICK 7200** Strut Spring Compressor
- **2 Ton Cherry Picker** Hoist
- **20 Ton Shop Press**
- **Parts Washer**
- **LINCOLN 225** Buzz Box Welder
- **LINCOLN 130T** Mig Welder
- **DELTA** Floor Mnt Drill Press
- **RIDGID 14"** Metal Cut Off Saw
- **ATLAS 36"** Metal Lathe
- **10,000 lbs** Digital Pallet Scales
- **CENTRAL 6"** Metal Band Saw
- **4 Ton Porta Power**
- **145 lb Anvil**
- **10' & 4'** Metal Hand Brakes
- **GRIZZLEY 6'** Throatless Shear
- **GRIZZLEY 15"** Planer
- **RYOBI 12"** Planer
- **DELTA 6"** Jointer
- **DELTA 18"** Band Saw
- **DELTA 12"** Band Saw
- **DeWALT 12"** Sliding Arm Saw
- **CLIPPER NO. 9 6"** Belt Lacer w/Stand
- **Transmission Jack**
- **Engine Stand**
- **Pallet Racking**
- **4' Metal Box & Pan Break**
- **5 Tier 2 Sided** Steel Rack w/Flat Stock, Tubing
- **Angle Iron, Rods, Etc.**
- **8' Metal** Welding Table
- **10,000 lb & 8,000 lb** Winch
- **4- Air** Hose Reels
- **3 Ton** Floor Jack
- **2- QUINCY** Air Compressors
- **Air Nailers**
- **Air Grease Gun & Barrel**
- **Log Chains & Binders**
- **RIDGID** Pipe Wrenches
- **COLUMBIAN** Shop Vise
- **POSI** Lock Pulley Pullers
- **1" Air** Impact
- **Assorted MAKITA** Tools
- **RIDGID 16 gal** Shop Vac
- **ECHO** Chain Saw
- **Shop Caster** Wheels
- **L.P. Salamander**
- **Smelting Pots**
- **Electric Motors**
- **MAYTAG** Engine
- **PORTER CABLE** Dove Tail Jig

HAY and BALAGE

- **Approx. 200** Round Bales 1st Cutting Grass Mix Hay
- **400+** 1st and 2nd Cutting Wrapped Hay and Balage

OUTDOOR MISC. ITEMS

- **BANDIT 200 12"** Chipper w/63hp Kubota Diesel
- **39"** Pull Behind Tiller w/13hp Honda
- **TROYBILT** Horse Tiller, Elect. Start
- **TROYBILT** Pony Tiller
- **BOSS 8'** Snow Plow w/Ford Mount
- **4' Lawn** Roller
- **1000 Gal & 500 Gal** Air Tanks
- **28' Fiberglass** Ext. Ladder
- **Step Ladders**
- **C.M. 5hp** Chipper
- **GQF 1502** Sportsman Incubators
- **Chick Brooders**
- **Poultry Waterers & Feeders**

Assorted Gates & Corral Panels • 12" Cider Press w/Elect Grinder • 12" Cider Press • **HARDWOOD RIDGE** Apple Grinder • 16' New Charcoal Grey Metal Side to do a 30 x 40 Pole Barn • Round Bale Feeder • 300 Gal Fuel Tank on Stand • Rough Sawn Lumber • Dumpster Hopper • Table Slab Lumber • Cherry, Oak & Pine • **SEVERAL MISC. GOODIE WAGONS!**

BOATS and TRAILERS

- **1985 THOMPSON 24'** Boat w/Shorlander Trailer, Mercruiser 898 Inboard/Outboard Motor, Elect. Walker Down Riggers
- **1975 STARCRAFT 215 16'** Boat w/85hp Johnson Outboard Motor, Canopy & Trailer
- **21' VIP** Boat Trailer
- **16' SHORLANDER** Boat Trailer
- **6 Place** Canoe & Kayak Trailer
- **2- 8' PELICAN** Kayaks
- **EVINRUDE 9.9 hp** Motor
- **JOHNSON 9.5 hp** Motor
- **MERCURY** Trolling Motor

FIREARMS and SPORTING ITEMS

- **REMINGTON 760** Pump 30-06 w/Scope
- **2- REMINGTON 760** 270 Cal. Rifles w/Scope
- **REMINGTON 760** BSA 243 Cal. W/Scope
- **SAVAGE 111** Bolt Act 270 w/Scope
- **MARLIN 60** Semi Auto 22 Cal
- **MOSSBERG 500** 12ga Pump
- **MARKWELL ARMS 45** Cal. Muzzle Loader
- **MENDI 45** Cal. Muzzle Loader
- **HERITAGE ROUGH RIDER 22** cal. & 22 Mag Revolver
- **Assorted Ammo**
- **2- 177** Cal. Pellet Guns
- **SAVAGE 110** Bolt Act. 7 mm Mag (Like New)
- **GRIZZLEY EXCALIBER** Maxtrix Crossbow (Like New)
- **EASTMAN OUTFITTERS XForce 300DX** Crossbow w/scope
- **BARNETT RECRUIT** Crossbow w/scope
- **PEARSON** Spoiler Compound Bow
- **MYLES KELLER** Flatliner Compound Bow
- **HORNADY 7mm, Rem 243, Ammo.**
- **STRIKE MASTER** Mag 2000 2hp 8" Ice Auger
- **Assorted Fishing Tackle**

HOUSEHOLD RELATED ITEMS

- **KITCHEN QUEEN** Wood Cook Stove
- **Assorted Furniture**
- **Misc Household Items**

LUNCH ON THE GROUNDS



OWNER: LEO and EMMA YODER
4121 South Darr Road – Scottville, MI 49454 • Ph. 231-690-7330

FOR MORE PHOTOS SEE
GoTo Auction.com
#2109

Yoder Brothers Auction Service

Specializing in Successful Auctions

Auctioneers LeRoy and Willis Yoder

9484 S. Rogers Ave., Clare, MI

PH: 989-386-9082



AUCTIONEERS NOTE: Sale order: 9:30 a.m. Misc and shop related goodie wagons. 10:30 2nd auction ring: Outdoor misc items. Guns selling at approx 12:00 noon followed by vehicles, tractors and farm equipment. Don't miss this good country auction with a variety of items in nice condition. Mark your calendars and enjoy the day with us. See ya there! *LeRoy*

AUCTION TERMS: Cash or approved check with proper I.D. Nothing to be removed until settled for. Not responsible for accidents. Lunch on grounds. All announcements made day of sale take precedence over all printed materials. Out of state buyers must have bank letter of credit.