

Merkels Auction- Estate Firearms Collection

by Merkel's Auction Specialists Inc.

Sat, Oct 23, 2021 11:00 AM Eastern

Spectacular 300+ Firearms Collection, including Luger, DWM, Colt, Ruger, Remington, Winchester, Springfield, Aikska, ect. Lots of excellent WWII and Military firearms. More Photos and lots to be posted soon...



Mauser C96 7.63MM Semi-Auto Pistol

Lot #1 (Sale Order 1 of 304)

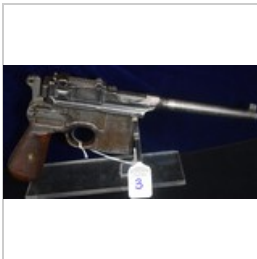
Mauser C96 7.63MM Semi-Auto Pistol with 5.5" barrel with fairly bright bore that is slightly frosty, 10 shot capacity. Late pre-war commercial all matching number, except stock is non-matching but vintage bearing SER# 778 it has a crack extending from button release. SER# 273445



Mauser C96 7.63MM Luger Semi-Auto Pistol

Lot #2 (Sale Order 2 of 304)

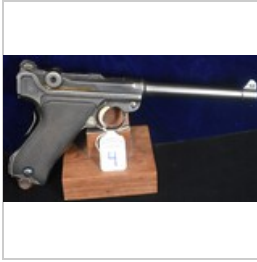
Mauser C96 7.63MM Semi-Auto Pistol with 5.5" barrel with bore that has some frosting, 10 shot capacity. Has 32 grooves on wooden grips. Right hand of receiver reads "WAFFENFABRIK MASUER/ OBERNDORF A. NECKAR" SER# 299075.



Mauser C96 7.63MM Semi-Auto Pistol

Lot #3 (Sale Order 3 of 304)

Mauser C96 7.63MM Semi-Auto Pistol with 5.5" barrel bright but slightly frosty bore, 10 shot capacity. This early pre-wartime commercial C96 has all matching numbers. The grips are aftermarket replacements with 19 grooves. See attached photos for more detail. SER# 55638



DMW 1906 Navy 1st Issue-Rework 9MM Semi-Auto Pistol

Lot #4 (Sale Order 4 of 304)

DMW 1906 Navy 1st Issue 9MM Semi-Auto Pistol with 6" barrel very clean bore, 8 shot capacity. Has correct navy sight, all matching numbers including original magazine, correct original grips with appropriate wear, some straw still showing. This 1st Issue 1906 Navy is a Re-work as the Gesichert has been moved from the lower position, having been milled out, then added to the upper safety position. See added photograph of this specific area. See attached photos for more detail. SER# 7976A



DMW Artillery Luger 9MM Semi-Auto Pistol

Lot #5 (Sale Order 5 of 304)

DMW Artillery Luger 9MM Semi-Auto Pistol with 8" barrel with clean bore, 8 shot capacity, number all matching with exception of unmarked firing pin, and WW1 unnumbered magazine with wooden base. Straw still showing and some fireblue remaining on correct parts. See attached photos for more detail. SER# 3746.



DWM Artillery 9MM Semi-Auto Pistol

Lot #6 (Sale Order 6 of 304)

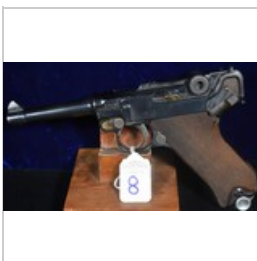
DWM Artillery 9MM Semi-Auto Pistol with 8" Barrel with fairly bright bore with minor frost, 8 shot, gun all matching except WWII magazine. With some straw remaining. See attached photos for more detail. SER#7539D



DWM P08 9MM Semi-Auto Pistol

Lot #7 (Sale Order 7 of 304)

DWM P08 9MM Semi-Auto Pistol with 4" barrel with decent bore, 8 shot capacity. It is all matching numbers, and unit marked on grip frame. See attached photos for unit marking on grip frame. We believe this marking indicates that this marking stands for Polizei Danzig Gdansk, which became part of West Prussia which was under the Nazi's control in the 1930s. Includes correct unnumbered magazine, grips show appropriate wear. See attached photos for more detail. SER#1604B



DWM P08 9MM Semi-Auto Pistol

Lot #8 (Sale Order 8 of 304)

DWM P08 9MM Semi-Auto Pistol with 4" barrel, 8 shot capacity, all numbers matching except magazine, 1920 re-work, reblued, double date stamped 1920, 1918. Left grip panel has a small crack, grips are replacements, come with WWII magazine. See attached photos for more detail. SER# 3413A



DMW P08 9MM Semi-Auto Pistol

Lot #9 (Sale Order 9 of 304)

DMW P08 9MM Semi-Auto Pistol with 4" barrel, 8 shot capacity, 1920 re-work, all matching numbers, comes with WWII magazine. See attached photos for more detail. SER#8595



DWM P08 9MM Semi-Auto Pistol

Lot #10 (Sale Order 10 of 304)

DWM P08 9MM Semi-Auto Pistol with 4" barrel, 8 shot capacity, Model 1920 commercial, all matching numbers still showing some straw. Magazine has been sandblasted because there was some pitting. See attached photos for more detail. SER#8601A.



Mauser P08 9MM Semi-Auto Pistol

Lot #11 (Sale Order 11 of 304)

Mauser P08 9MM Semi-Auto Pistol with 4" barrel, 8 shot capacity, all matching except magazine, very light straw remaining. SER# 687G.



DWM P08 9MM Semi-Auto Pistol

Lot #12 (Sale Order 12 of 304)

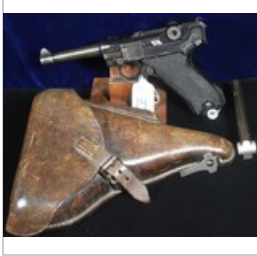
DWM P08 9MM Semi-Auto Pistol with 4" barrel, 8 shot capacity, Model 1920 Commercial date stamped 1921, is unit marked S.O.Q.II, grips are replacements, and magazine is aftermarket, all numbers are matching. See attached photos for more detail. SER# 5798



DWM P08 .30 Luger Semi-Auto Pistol

Lot #13 (Sale Order 13 of 304)

DWM P08 .30 Luger Semi-Auto Pistol with 3 5/8" barrel Bright Bore, 8 shot capacity, model 1923 commercial, grips may be vintage replacements, all matching numbers, and correct magazine. See attached photos for more detail. SER#79641.



Masuer P08 9MM Semi-Auto Pistol

Lot #14 (Sale Order 14 of 304)

Mauser P08 9MM Semi-Auto Pistol with 4" barrel, 8 shot capacity. Comes with 2 matching magazines, vintage takedown tool, and 1939 dated holster. The gun is Dated 1940 and has correct black grips, is all matching numbers. See attached photos for more detail. SER# 5233K



DWM P08 .30 Luger Semi-Auto Pistol

Lot #15 (Sale Order 15 of 304)

DWM P08 .30 Luger Semi-Auto Pistol with 3 5/8" barrel marked "Germany N" underneath, 8 shot capacity, date has been scrubbed, barrel has been changed, as this was originally a military 9mm pistol. The barrel has no caliber marking or serial number. See attached photos for more detail. SER#6316C.



Mauser Model 1906 .30 Luger Semi-Auto Pistol

Lot #16 (Sale Order 16 of 304)

Mauser Model 1906 in .30 Luger Semi-Auto Pistol Reproduction Important by Inter Arms. This pistol comes in original matching factory box with broken corners on top, includes insert and factory test target dated December 19, 1970. Appears new as issued in box, possibly only factory fired. See attached photos for more detail. SER# 1393.



RARE Nazi Proofed .22 Luger Conversion Kit

Lot #17 (Sale Order 17 of 304)

RARE Nazi Proofed .22 Luger Conversion Kit. This this kit includes Complete Upper assembly , breach block is stamped stamped ERMA/Erfurt, front and rear toggle links, along with fixed sight all bear the "WaA 49" Proof mark, indicating Berlin-Lübecker Maschinenfabrik as the Manufacturer, in Lübeck, Germany. Break Block Serial Number is 1549, and all corresponding parts to this unit are stamped "49". The heavy magazine is stamped 1549 below WaA 49 Proof, on left side. The magazines spring mechanism remains in excellent working order, and is fairly stiff. The 4.5" barrel has threaded front end, and barrel end block is stamped "5,40 MM" on one side, and the other side bears Military Eagle Proofs, and "1983" KRIEGHOFF proofs? See detailed photos.



BING Nuremberg Type 2 Snail Drum Magazine for 9MM Luger

Lot #17A (Sale Order 18 of 304)

BING Nuremberg Type 2 Snail Drum Magazine for 9MM Luger. Matching numbers front and back, SN:128722. Includes seldom seen MP-18 Machine Gun Adapter, holster, and dust cover. Magazine has great spring tension.



BING Nuremberg Type 2 Snail Drum Magazine for 9MM Luger

Lot #17B (Sale Order 19 of 304)

BING Nuremberg Type 2 Snail Drum Magazine for 9MM Luger. Matching numbers front and back, SN:176442. Comes with Black Leather Magazine holster. Magazine has great spring tension.



Luger Artillery Holster & LP-08 Stock-Board

Lot #17C (Sale Order 20 of 304)

Luger Artillery Holster & LP-08 Stock-Board SER#2450. No tools included. No alphanumeric serial number indicates that this stock was from the first production series. See attached photos for more details.



Luger Artillery Holster & LP-08 Stock-Board

Lot #17D (Sale Order 21 of 304)

Luger Artillery Holster & LP-08 Stock-Board SER#3677. No tools included. No alphanumeric serial number indicates that this stock was from the first production series. See attached photos for more details.



Luger Artillery LP-08 Stock-Board

Lot #17E (Sale Order 22 of 304)

Luger Artillery LP-08 Stock-Board SER#5050A. A in serial number indicates that this stock was in the second production run of Luger stocks. See attached photos for more details.



1943 Colt M1911 A1 U.S Army .45 Semi-Auto Pistol

Lot #18 (Sale Order 23 of 304)

1943 Colt M1911 A1 U.S Army .45 Semi-Auto Pistol. This pistol has a 5" barrel, two 7 shot magazines, and is chambered in .45ACP. Has early 1911 slide that has been re-blued over some pitting, front grip strap has been stippled. FJA inspection proof is stamped on the left side of frame above trigger. Early slide is stamped, "MODEL OF 1911. U.S. ARMY" and "COLT AUTOMATIC CALIBRE 45." Has hard wood grips, hammer, safety, slide release, and main spring housing are all Colt. Comes with two atwoods two-tone mags. See attached photos for more detail. SER# 956011



Colt 22-45 Service Model Conversion Unit (Floating Chamber)

Lot #18A (Sale Order 24 of 304)

Colt 22-45 Service Model Conversion Unit (Floating Chamber). Please see photos of this seldom encountered kit in original box .22 conversion set.



1945 Colt M1911 A1 British Govt. .45 Semi-Auto Pistol

Lot #19 (Sale Order 25 of 304)

1945 Colt M1911 A1 British Govt. .45 Semi-Auto Pistol. This pistol has a 5" barrel, two 7 shot magazines, and is chambered in .45ACP. This exceptional example has British proofs aswell as British Government Stamp on Right Side of frame, it is also stamped "NOTENGLISHMAKE," below Serial No 2287781 indicating Colt manufactured this pistol in 1945. See detailed photographs of proof marks. All proofs are correct including proof on barrel. Comes with two period correct mags one stamped "S(Scovill)", and one stamped "L(Little)". See attached photos for more detail. SER# 2287781



Federal Ordnance Government Model .45 Semi-Auto Pistol

Lot #20 (Sale Order 26 of 304)

Federal Ordnance Government Model .45 Semi-Auto Pistol. This pistol has a 5" barrel, 7 round magazine, is chambered in .45 ACP, and has checkered walnut grips with Phiosphate-Style finish. This Model was introudcted in 1988 by Fed-Ord INC. of South El Monte California. See attached photos for more details. See attached photos for more detail. SER# F88 01313.



Mauser 1910/1914 7.65MM Semi-Auto Pistol

Lot #21 (Sale Order 27 of 304)

Mauser 1910/1914 7.65MM Semi-Auto Pistol. This pistol has a 3.5" barrel, 8 round detachable magazine with matching Serial Number, original certificate from WWII, is chambered in 7.65MM, and includes holster. See attached photos for more detail. SER#268702.



CZ Modell 27 7.65MM Semi-Auto Pistol

Lot #22 (Sale Order 28 of 304)

CZ Modell 27 7.65MM Semi-Auto Pistol. This pistol has a 4" barrel, 8 round magazine marked "P. Mod . 27" is chambered in 7.65MM, and comes with original certificate from WWII, and holster. See attached photos for more detail. SER#459660.



RARE Jager Pre-Nazi Commercial Semi-Auto ANGM 7.65MM Semi-Auto Pistol

Lot #23 (Sale Order 29 of 304)

RARE Jager Pre-Nazi Commercial Semi-Auto ANGM 7.65MM Semi-Auto Pistol. This pistol has a 4" barrel, two 8 round magazines, and is chambered in 7.65MM. This pistol includes original bring back Certificate from WWII. DRP AGNM Marked WWI to 1934 time period. This Jager Commerical SN# 6905, is in the serial number range of 5,167 to 9,268 of interspersed Jagers, that are mixed in with commercials, and accepted by the Imperial Germany Army. On left side of slide this handgun is marked "Jager- Pistole. D.R.P. ANGEM." Right side of the frame has two German Imperial army "Crown/N" markings. What makes this pistol unique was the innovative manufacturing techniques used with early sheet metal stamping on the sides of the frame, that the rest of the gun is assembled to. See attached photos for more detail. SER# 6905.



Mauser 1914 7.65MM Semi-Auto Pistol

Lot #24 (Sale Order 30 of 304)

Mauser 1914 7.65MM Semi-Auto Pistol. This pistol has a 3.5" barrel, 8 round magazine with matching serial number, and is chambered in 7.65MM. See attached photos for more detail. SER# 337050.



Mauser 1914 7.65MM Semi-Auto Pistol

Lot #25 (Sale Order 31 of 304)

Mauser 1914 7.65MM Semi-Auto Pistol. This pistol has a 3.5" barrel, 8 round magazine, and is chambered in 7.65MM. See attached photos for more detail. SER#348484.



Mauser 1934 7.65MM Semi-Auto Pistol

Lot #26 (Sale Order 32 of 304)

Mauser 1934 7.65MM Semi-Auto Pistol. This pistol has a 3.5" barrel, two 8 Round magazines, and is chambered in 7.65MM. See attached photos for more detail. SER# 572315.



Walther PP 9MM Semi-Auto Pistol

Lot #27 (Sale Order 33 of 304)

Walther PP 9MM Semi-Auto Pistol. This pistol has a 4" barrel, two 7 shot magazines, and is chambered in 9MM Kurz. Comes in original clamshell box, with paperwork. See attached photos for more detail. SER#708078.



Walther PP 7.65MM Semi-Auto Pistol

Lot #28 (Sale Order 34 of 304)

Walther PP 7.65MM Semi-Auto Pistol. This pistol has a 4" barrel, three 8 shot magazines, and is chambered in 7.65MM. See attached photos for more detail. SER#373624P.



Walther PP 9MM Semi-Auto Pistol

Lot #29 (Sale Order 35 of 304)

Walther PP 9MM Semi-Auto Pistol. This pistol has a 4" barrel, 7 shot magazine, and is chambered in 9MM Kurz. See attached photos for more detail. SER#70249A.



Walther PP 7.65MM Semi-Auto Pistol

Lot #30 (Sale Order 36 of 304)

Walther PP 7.65MM Semi-Auto Pistol. This pistol has a 4" barrel, 8 shot magazine, and is chambered in 7.65MM. See attached photos for more detail. SER#115465P.



Mauser HSc Super .380ACP Semi-Auto Pistol

Lot #31 (Sale Order 37 of 304)

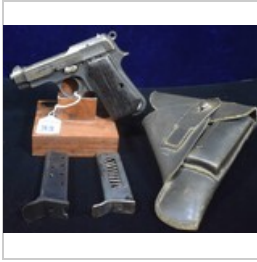
Mauser HSc Super .380ACP Semi-Auto Pistol. This pistol has a 3.5" barrel, 7 round magazine, and is chambered in .380 ACP. See attached photos for more detail. SER#04839.



Beratta 950 BS .25ACP Semi-Auto Pistol

Lot #32 (Sale Order 38 of 304)

Beratta 950 BS .25ACP Semi-Auto Pistol. This pistol has a 2.5" barrel, three 8 round magazine, and is chambered in .25 ACP. Comes in original factory box with paperwork. See attached photos for more detail. SER# BU52452V.



P.Beretta 1935 7.65MM Semi-Auto Pistol

Lot #33 (Sale Order 39 of 304)

This pistol has a 3 3/8" barrel, two 8 round magazine, comes with holster, and is chambered in 7.65MM. See attached photos for more detail. SER# 563817.



Tokarev TT-33 7.62x25MM Semi-Auto Pistol

Lot #34 (Sale Order 40 of 304)

Tokarev TT-33 7.62x25MM Semi-Auto Pistol. This pistol has a 4.25" barrel, two 8 round magazines, and is chambered in 7.62x25MM Tokarev. See attached photos for more detail. SER# PKO1587.



FNH Modell 27 7.65MM Semi-Auto Pistol

Lot #35 (Sale Order 41 of 304)

FNH Modell 27 7.65MM Semi-Auto Pistol. This pistol has a 4" barrel, 8 round magazine, and is chambered in 7.65MM. See attached photos for more detail. SER# 394732.



Fabrique Nationale Model 1922 Nazi Proofed Semi-Auto Pistol

Lot #36 (Sale Order 42 of 304)

Fabrique Nationale Model 1922 Nazi Proofed Semi-Auto Pistol. This pistol has a 4.5" barrel, 8 round magazine, and is chambered in 7.65MM. This pistol has been re-blued. Left side of slide and frame stamped with Waffenmat proof. See attached photos for more detail. SER# 157213.



Fabrique Nationale Model 1922 7.65MM Semi-Auto Pistol

Lot #37 (Sale Order 43 of 304)

Fabrique Nationale Model 1922 7.65MM Semi-Auto Pistol . This pistol has a 4.5" barrel, three 8 shot magazines, and is chambered in 7.65MM. Has proof markings on left side of slide and frame, and on chamber of barrel. See attached photos for more detail. SER#29027.



Astra 600/43 9MM Semi-Auto Pistol

Lot #38 (Sale Order 44 of 304)

Astra 600/43 9MM Semi-Auto Pistol. This pistol has a 5.25" barrel, three 8 round magazines, holster, and is chambered in 9MM. See attached photos for more detail. SER# 45951.



Astra 600 Semi-Auto Pistol

Lot #39 (Sale Order 45 of 304)

Astra 600 Semi-Auto Pistol. This pistol has a 5.25" barrel, two 8 round magazines, wooden case, and is chambered in 9MM. This pistol has been re-blued. See attached photos for more detail. SER# 15759.



Astra 300 7.65MM Semi-Auto Pistol

Lot #40 (Sale Order 46 of 304)

Astra 300 7.65MM Semi-Auto Pistol. This pistol has a 3.75" barrel, two 7 round magazines, chambered in 7.65MM, and has proof markings on left side of slide and frame, and on chamber of barrel. See attached photos for more detail. SER# 596430.



Astra 300 7.65MM Semi-Auto Pistol

Lot #41 (Sale Order 47 of 304)

Astra 300 7.65MM Semi-Auto Pistol. This pistol has a 3.75" barrel, 7 round magazine, chambered in 7.65MM, and has proof markings on left side of slide and frame, and on chamber of barrel. See attached photos for more detail. SER# 611537.



Walther P38 9MM Semi-Auto Pistol

Lot #42 (Sale Order 48 of 304)

Walther P38 9MM Semi-Auto Pistol. This pistol has a 5" barrel, 8 round magazine, and is chambered in 9MM. This pistol has Nazi Waffemat, and 359 proofs on right side of slide, and 359 proof on left side of frame. See attached photos for more detail. SER#8353h.



SpreeWerk P38 9MM Semi-Auto Pistol

Lot #43 (Sale Order 49 of 304)

SpreeWerk P38 9MM Semi-Auto Pistol. This pistol has a 5" barrel, 8 round magazine, is chambered in 9MM, and has Nazi proofs on right side of slide, and on left side of frame next to serial number. See attached photos for more detail. SER# 8395d.



CZ Modell 27 7.65MM Semi-Auto Pistol

Lot #44 (Sale Order 50 of 304)

CZ Modell 27 7.65MM Semi-Auto Pistol. This pistol has a 4" barrel, 8 round magazine marked "P. Mod . 27" and is chambered in 7.65MM. Features plastic checkered grips with CZ logo. See attached photos for more detail. SER# 330407.



BH Eibar 1914 7.65MM Semi-Auto Pistol

Lot #45 (Sale Order 51 of 304)

BH Eibar 1914 7.65MM Semi-Auto Pistol . This pistol has a 3.25" barrel, two 9 round magazines, and is chambered in 7.65MM. See attached photos for more detail. SER# 39667.



Fegarmy PA-63 9x18MAK Semi-Auto Pistol

Lot #46 (Sale Order 52 of 304)

Fegarmy PA-63 9x18MAK Semi-Auto Pistol. This pistol has a 3.75" barrel, two 7 round magazines, holster, and is chambered in 9x18MAK. See attached photos for more detail. SER# AJ4292.



Baikal IJ-70 9MM Semi-Auto Pistol

Lot #47 (Sale Order 53 of 304)

Baikal IJ-70 9MM Semi-Auto Pistol . This pistol has a 3.5" barrel, 8 round magazine, and is chambered in 9MM MAK. See attached photos for more detail. SER# A002722.



Colt Model 1903 Pocket Hammerless 3rd Issue Semi-Auto Pistol

Lot #48 (Sale Order 54 of 304)

Colt Model 1903 Pocket Hammerless 3rd Issue Semi-Auto Pistol. This pistol has a 3.5" barrel, 8 round two tone magazine, and is chambered .32 Colt Rimless. This pistol is a 3rd issue of the 1903 Hammerless Model, grips are in very good conditions. The rampant colt stamped at back of slide is very crisp. See attached photos for more detail. SER# 312037.



Ilima IX-B .45ACP Semi-Auto Pistol

Lot #49 (Sale Order 55 of 304)

Ilima IX-B .45ACP Semi-Auto Pistol. This pistol has a 4" barrel, two 7 round magazines, and is chambered in .45 ACP. In factory box with paperwork. See attached photos for more detail. SER# B53887.



1961 Ruger Pre-MK1 Standard Pistol .22 Semi-Auto Pistol

Lot #50 (Sale Order 56 of 304)

1961 Ruger Pre-MK1 Standard Pistol .22 Semi-Auto Pistol. This pre MK1 pistol has a 6" barrel, 10 shot capacity, patina on barrel, comes with original magazine. SER# 213521.



AMT Lightning Target Pistol W/ Leupold M8-4x Scope .22 Semi-Auto Pistol

Lot #51 (Sale Order 57 of 304)

AMT Lightning Target Pistol W/ Leupold M8-4x Scope .22 Semi-Auto Pistol. This pistol has a 8.5" barrel, two 10 round magazines, and is chambered in .22LR. Includes Leupold M8-4X Extended E.R scope, custom hardwood case and 2 mags. See attached photos for more detail. SER# G08314.



Ruger 22 Charger .22 Semi-Auto Pistol

Lot #52 (Sale Order 58 of 304)

Ruger 22 Charger .22 Semi-Auto Pistol. This pistol has a 10" barrel, two 10 round rotary magazines, and is chambered in .22LR. Includes original factory bag, box, and paperwork. See attached photos for more detail. SER# 490-13454.



Remington 221 Fireball XP-100 Bolt Action Pistol

Lot #53 (Sale Order 59 of 304)

Remington XP-100 Bolt Action Pistol. This pistol has a 11" barrel, is chambered in .221 Fireball, has Bushnell Phantom Scope, and comes with holster. See attached photos for more detail. SER# 2155.



Hi Standard Supermatic Military Trophy .22 Semi-Auto Pistol

Lot #54 (Sale Order 60 of 304)

Hi Standard Supermatic Military Trophy .22 Semi-Auto Pistol. This pistol has a 5.5" barrel, 10 shot capacity, and is chambered in .22LR. Includes factory box, extra set of hard wood checkered grips, and 2 mags. See attached photos for more detail. SER# ML01860.



Hi Standard Longhorn Model 9328 .22 Revolver

Lot #55 (Sale Order 61 of 304)

Hi Standard Longhorn Model 9328 .22 Revolver. This revolver has a 9.5" barrel, 9 shot capacity, and is chambered in 22LR currently, and can be changed to .22 magnum with the second included cylinder. Also comes with, paperwork, and factory box. See attached photos for more detail. SER# M083763.



Colt Peacemaker .22 Revolver

Lot #56 (Sale Order 62 of 304)

Colt Peacemaker .22 Revolver. This revolver has a 6" barrel, 6 shot capacity, and is chambered in 22LR. Excellent case coloring, Crisp unmarred grips. Appears to be in near factory condition. See attached photos for more detail. SER #G52550.



Colt D.A.45 .45 Revolver

Lot #57 (Sale Order 63 of 304)

Colt D.A.45 .45 Revolver. This revolver has a 5.5" barrel, 6 shot capacity and is chambered in .45 caliber. See attached photos for more detail. SER#200886.



Colt Official Police .38 Revolver

Lot #58 (Sale Order 64 of 304)

Colt Official Police .38 Revolver. This revolver has a 5" barrel, 6 shot capacity, and is chambered in .38 caliber. Bottom frame between grips marked "9 NINE" indicating this was a police service revolver with rack number. See attached photos for more detail. SER#706133.



Colt Police Positive .38 Special Revolver

Lot #59 (Sale Order 65 of 304)

Colt Police Positive .38 Special Revolver. This revolver has a 3 7/8" barrel, 6 shot capacity, and is chambered in .38 Special. See attached photos for more detail. SER#322631



Colt D.A.41 .41 Revolver

Lot #60 (Sale Order 66 of 304)

Colt D.A.41 .41 Revolver. This revolver has a 5 7/8" barrel, 6 shot capacity, and is chambered in .41 caliber. See attached photos for more detail. SER#231209.



Smith & Wesson Military Victory Model 1942-1945 .38 S&W Revolver

Lot #61 (Sale Order 67 of 304)

Smith & Wesson Military Victory Model 1942-1945 .38 S&W Revolver. This revolver has a 5 7/8" barrel, 6 shot capacity, and is chambered in 38 S&W Special. See attached photos for more detail. SER#V99217



Smith & Wesson Model 36 .38 S&W Special Revolver

Lot #62 (Sale Order 68 of 304)

Smith & Wesson Model 36 .38 S&W Special Revolver. This revolver has a 2" barrel, 5 shot capacity, and is chambered in .38 S&W Special. See attached photos for more detail. SER#J202198.



Smith & Wesson 36 .38 S&W Special

Lot #63 (Sale Order 69 of 304)

Smith & Wesson 36 .38 S&W Special. This revolver remains in about factory new condition, with very light turn line, and remains in original factory box. See attached photos for more detail. SER#J120292



Colt Diamondback .22 Revolver

Lot #64 (Sale Order 70 of 304)

Colt Diamondback .22 Revolver. This diamondback is chambered in 22LR, having a 4" Barrel, Colt's Blue finish, and fine turn line on cylinder. Comes in Colt Diamondback 2-piece box with cleaning rod brush. See attached photos for more detail. See attached photos for more details. SER#D22684.



Ruger Blackhawk .41 Mag Revolver

Lot #65 (Sale Order 71 of 304)

Ruger Blackhawk .41 Mag Revolver. This Blackhawk comes in original box, with manual dated Oct. 1, 1965, and original blank registration card. Chambered in 41 magnum with 6.5" barrel known as Ruger catalog No. BKH42. This two piece box is very crisp, bearing serial number 6434, and appears as new, most likely only factory fired. See attached photos for more details. SER# 6434.



Ruger Blackhawk .357 Magnum Revolver

Lot #66 (Sale Order 72 of 304)

Ruger Blackhawk .357 Magnum Revolver. This Blackhawk comes in original box, with manual dated 10/6/169, and original blank registration card. Chambered in 357 magnum, and includes extra fitted 9MM cylinder with 6.5" barrel known as Ruger catalog No. BKH36. This two piece box has separation. Gun appears as new, most likely only factory fired. See attached photos for more details SER# 30-42351.



Ruger New Model Super Blackhawk .44 Magnum Revolver

Lot #67 (Sale Order 73 of 304)

Ruger New Model Super Blackhawk .44 Magnum Revolver. This revolver includes original box, instructions, and parts list manual dated MRN2/25/9-72. Ruger's catalog number known as S47N. Pistol has a 7.5" barrel, and is chambered in 44 Magnum. Cylinder has very fine turn line, otherwise about factory new. See attached photos for more details. SER#81-60626.



Ruger Flat Top 3-Screw Blackhawk .357 Magnum Revolver

Lot #68 (Sale Order 74 of 304)

Ruger Flat Top 3-Screw Blackhawk .357 Magnum Revolver with 6.5" barrel. Minor handling marks. See attached photos for more details. SER# 35001.



Ruger 3-Screw Blackhawk .30 Carbine Revolver

Lot #69 (Sale Order 75 of 304)

Ruger 3-Screw Blackhawk .30 Carbine Revolver. This revolver has a 7.5" barrel, very fine turn line, most likley fired only a handfull of times. See attached photos for more details. SER# 50-01322.



Ruger 3-Screw Single-Six .22 Revolver

Lot #70 (Sale Order 76 of 304)

Ruger 3-Screw Single-Six .22 Revolver. This 3-Screw Single Six revolver has a 6.5" barrel, with extra fitted WMR cylinder in box. Includes solid original box with no splits, Ruger string tag, and manual dated March 1, 1965. See attached photos for more detail. SER# 521747.



Ruger Bearcat .22 Revolver

Lot #71 (Sale Order 77 of 304)

Ruger Bearcat .22 Revolver. This bearcat features a 4" barrel, includes original box, instuction manual dated 8/71, and blank registration card. This is an exceptional factory new example in crisp two piece box. See attached photos for more detail. SER# 91-02776.



P. Webley WG Army Model .455 Webley Revolver

Lot #72 (Sale Order 78 of 304)

P. Webley WG Army Model .455 Webley Revolver. This revolver has a 6" barrel, 6 shot capacity, and is chambered in .455 Webley. Comes in wooded case with vintage ammuniton including boxes. See attached photos for more detail. SER#9804.



Webley & Scott Mark III .38 Revolver

Lot #73 (Sale Order 79 of 304)

Webley & Scott Mark III .38 Revolver. This revolver has a 4" barrel, 6 shot capacity, and is chambered in .38 caliber. Proof markings on right side of frame. See attached photos for more detail. SER#53584.



Webley Mark IV .38 Revolver

Lot #74 (Sale Order 80 of 304)

Webley Mark IV .38 Revolver. This revolver has a 5" barrel, 6 shot capacity, and is chambered in .38 caliber. Proof marks on both sides of frame, barrel, and cylinder. See attached photos for more detail. SER#67956.



AT British Military .38 Revolver**

Lot #75 (Sale Order 81 of 304)

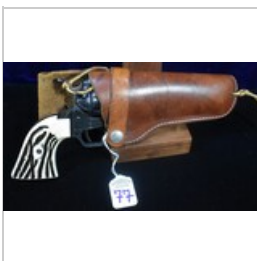
AT** British Military .38 Revolver. This revolver has a 5" barrel, 6 shot capacity, and is chambered in .38 caliber. Proof marks on break-top release, left side of trigger, and right side of frame. See attached photos for more detail. SER#ZB5451



H&R Arms H&R 922 .22 Revolver

Lot #76 (Sale Order 82 of 304)

H&R Arms H&R 922 .22 Revolver. This revolver has a 6" barrel, 9 shot capacity. See attached photos for more detail. SER# F8560



Herbert Schmidt Ostheim Texas Scout .22 Semi-Auto Pistol

Lot #77 (Sale Order 83 of 304)

Herbert Schmidt Ostheim Texas Scout .22 Semi-Auto Pistol. This revolver has a 4.75" barrel, 6 shot capacity, and is chambered in .22LR. See attached photos for more detail. SER# 99506.



Rossi Model 70 .22 Revolver

Lot #78 (Sale Order 84 of 304)

Rossi Model 70 .22 Revolver. This revolver has a 2" barrel, 7 shot capacity, Rossi marked plastic grips, and bright chrome finish. See attached photos for more detail. SER# 42861.



North American Arms Corp NAA 22-S .22 Revolver

Lot #79 (Sale Order 85 of 304)

North American Arms Corp NAA 22-S .22 Revolver. This revolver has a 1" barrel, 5 shot capacity, and comes in original clamp shell box, with paperwork, and appears factory new. See attached photos for more detail. SER# 15010.



Sheridan Products Knocabout .22 Single Shot Pistol

Lot #80 (Sale Order 86 of 304)

Sheridan Products Knocabout .22 Single Shot Pistol. This break top single shot pistol has a 5" barrel. See attached photos for more detail. SER# 04653.



Armi-Galesi 503/b .22 Semi-Auto Pistol

Lot #81 (Sale Order 87 of 304)

Armi-Galesi 503/b .22 Semi-Auto Pistol. This pistol has a 2.25" barrel, 6 shot magazine, is chambered in .22. See attached photos for more detail. SER# 115471.



Colt 1908 Hammerless Vest Pocket .25ACP Semi-Auto Pistol

Lot #82 (Sale Order 88 of 304)

Colt 1908 Hammerless Vest Pocket .25ACP Semi-Auto Pistol. This pistol has a 2" barrel and 6 shot magazine. See attached photos for more detail. SER# 131202.



Colt 1908 Hammerless Vest Pocket .25ACP Semi-Auto Pistol

Lot #83 (Sale Order 89 of 304)

Colt 1908 Hammerless Vest Pocket .25ACP Semi-Auto Pistol. This pistol has a 2" barrel and 6 shot magazine. See attached photos for more detail. SER# 376642.



Colt 1908 Hammerless Vest Pocket .25ACP Semi-Auto Pistol

Lot #84 (Sale Order 90 of 304)

Colt 1908 Hammerless Vest Pocket .25ACP Semi-Auto Pistol. This pistol has a 2" barrel and 6 shot magazine. See attached photos for more detail. SER# 207598.



Pieper-Bayard Herstal-Belgium 7.65MM Semi-Auto Pistol

Lot #85 (Sale Order 91 of 304)

Pieper-Bayard Herstal-Belgium 7.65MM Semi-Auto Pistol. This pistol has a 2.5" barrel, 6 shot magazine, and is chambered in 7.65MM. See attached photos for more details. SER# 100813.



AKT-Ges Einhand 6.35MM Semi-Auto Pistol

Lot #86 (Sale Order 92 of 304)

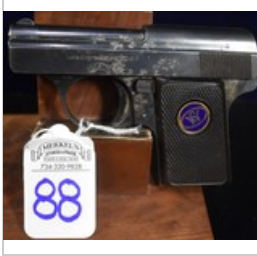
AKT-Ges Einhand 6.35MM Semi-Auto Pistol. This pistol has a 2.25" barrel, 6 shot magazine, and is chambered in 6.35MM (.25 ACP). See attached photos for more detail. SER#9257.



Walther Model 9 6.35MM Semi-Auto Pistol

Lot #87 (Sale Order 93 of 304)

Walther Model 9 6.35MM Semi-Auto Pistol. This pistol has a 2" barrel, 6 shot magazine, is chambered in 6.35MM (.25 ACP), and features a Silver Finish. See attached photos for more detail. SER# 590298.



Walther Model 9 6.35MM Semi-Auto Pistol

Lot #88 (Sale Order 94 of 304)

Walther Model 9 6.35MM Semi-Auto Pistol. This pistol has a 2" barrel, 6 shot magazine, is chambered in 6.35MM (.25 ACP). See attached photos for more detail. SER# 428959.



FN Browning Baby 6.35MM Semi-Auto Pistol

Lot #89 (Sale Order 95 of 304)

FN Browning Baby 6.35MM Semi-Auto Pistol. This pistol has a 2" barrel, 6 shot magazine, is chambered in 6.35MM (.25 ACP). See attached photos for more detail. SER#310889.



Suhl & Sohns Prototype* Pocket Semi Auto Pistol

Lot #90 (Sale Order 96 of 304)

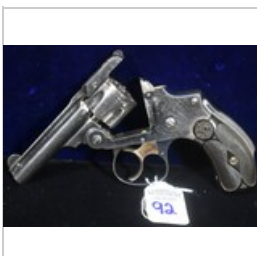
Suhl & Sohns Prototype* Pocket Semi Auto Pistol. We believe this pistol to be prototype. This pistol features a internal 7 round magazine, 2.5" barrel, plastic checkered grips are marked with Suhl & Sohns Logo. Base of frame is stamped with SUHL shield, and SER# "C." See photos for more details. SER# C.



Smith & Wesson Ladysmith .22 Revolver

Lot #91 (Sale Order 97 of 304)

Smith & Wesson Ladysmith .22 Revolver. This fine 3rd Model LadySmith Revolver has a Nickel Plated Finish with a 3 1/2" Barrel. The original hardwood grips are very clean with virtually no handling marks and bear the Brass S&W Medallion. See attached photos for more detail. SER# 19720.



Smith & Wesson 1st Model Saftey Hammerless .32 Revolver

Lot #92 (Sale Order 98 of 304)

Smith & Wesson 1st Model Saftey Hammerless .32 Revolver. This 1st model saftey hammerless has a 3" barrel, 6 shot capacity, is chambered in .32 Cal. See attached photos for more detail. SER# 85365.



ANTIQUA Smith & Wesson .32 Double Action 4th Model Revolver

Lot #93 (Sale Order 99 of 304)

ANTIQUA Smith & Wesson .32 Double Action 4th Model Revolver. This antique revolver has a 3.5" barrel, 5 shot capacity, and is chambered in .32 cal. See attached photos for more detail. SER# 111535.



ANTIQUA Smith & Wesson .32 Single Action Revolver

Lot #94 (Sale Order 100 of 304)

ANTIQUA Smith & Wesson .32 Single Action Revolver. This antique revolver has a 3.5" barrel, 5 shot capacity, and is chambered in .32 cal. See attached photos for more detail. SER# 64782.



1908 Colt Bisley .45 Revolver

Lot #95 (Sale Order 101 of 304)

"1908 Colt Bisley .45 Revolver. This revolver has a 4.75" barrel, 6 shot capacity, and is chambered in .45 cal. Barrel bore is still bright, date of manufacture 1908, original grips very worn, comes with custom set of extra grips, Rampant Colt is slightly Visible . Left side of barrel is marked ""(BISLEY MODEL) COLT FRONTIER SIX SHOOTER."" Action remains tight, and is still crisp. See attached photos for more detail. SER# 300697.



ANTIQUA Target & Parlour Rimfire Pistols Box Set

Lot #96 (Sale Order 102 of 304)

ANTIQUA Target & Parlour Rimfire Pistols Box Set . Francis D'Armes & Cycles 27 Caliber Parlor Pistol, and Belgian Made 27 Caliber Target Pistol. Box pistols come in wooded box, with cleaning rod, key, flathead screwdriver, and ammunition in box. See attached photos for more detail.



J Stevens A&T Tip-Up Small Frame Pocket Rifle .22 Single Shot Pistol

Lot #97 (Sale Order 103 of 304)

J Stevens A&T Tip-Up Small Frame Pocket Rifle .22 Single Shot Pistol with 12" barrel. With skeleton frame extension with matching serial number, left side of grip silver plate reading H.W. McFarland. This pistol has all matching numbers on frame, trigger group, barrel, and frame extension. See attached photos for more detail. SER#43667.



ANTIQUA J. Stevens Model 43 Single Shot Pistol

Lot #98 (Sale Order 104 of 304)

ANTIQUA J. Stevens Model 43 Single Shot Pistol. This tip-up single shot pistol has a 6" barrel. See attached photos for more detail. See attached photos for more detail. SER# 54196.



ANTIQUE Remington Vest Pocket Pistol Saw Handle Deringer in Original Box

Lot #99 (Sale Order 105 of 304)

ANTIQUE Remington Vest Pocket Pistol Saw Handle Deringer in Original Box. This single shot pistol has a 3.25" barrel, and is chambered in .22 Rimfire. This pistol has ivory grips, a Rooster engraved on the left side of frame, and rest of frame has arabesque scrolling. This is also known as a Saw Handle Deringer. Action remains tight and very crisp. See attached photos for more detail. SER# 15391.



ANTIQUA C. Sharps Model 4 Sliding Four Barrel Peppersbox

Lot #100 (Sale Order 106 of 304)

ANTIQUA C. Sharps Model 4 Sliding Four Barrel Peppersbox. This handgun has a 3" barrel, 4 shot capacity, and is chambered in .32 Long Rimfire. Rotating Firing Pin on front of trigger group. See attached photos for more detail. SER# 13422.



Springfield M1 Garand .30 Cal Semi-Auto Rifle

Lot #101 (Sale Order 107 of 304)

Springfield M1 Garand .30 Cal Semi-Auto Rifle. This rifle has a 24" barrel, 8 round capacity, and is chambered in .30 cal. Springfield Barrel Dated 03/55, Stock CMP cartouche, as well as a P proof, stock has not been sanded, Springfield trigger group with Winchester trigger guard. With certificate and title. See attached photos for more detail. SER#5844216.



H&R Arms M1 Garand .30 Cal Semi-Auto Rifle

Lot #102 (Sale Order 108 of 304)

H&R Arms M1 Garand .30 Cal Semi-Auto Rifle. This rifle has a 24" barrel, 8 round capacity, and is chambered in .30 cal. Springfield Bolt, H&R Barrel dated 03/55, H&R Trigger Group, and CMP marked stock. With certificate and title. See attached photos for more detail. SER#5585072.



Winchester M1 Garand .30 Cal Semi-Auto Rifle

Lot #103 (Sale Order 109 of 304)

Winchester M1 Garand .30 Cal Semi-Auto Rifle. This rifle has a 24" barrel, 8 round capacity, and is chambered in .30 cal. Springfield Barrel dated 12/46, Springfield bolt, trigger group marked BMB, stock has visible springfield cartouche, bottom of the pistol grip has a brass unit marker H.IV/79, stock has not been sanded and contains cleaning kit. SER#1341401.



Springfield M1 Garand .30 Cal Semi-Auto Rifle

Lot #104 (Sale Order 110 of 304)

Springfield M1 Garand .30 Cal Semi-Auto Rifle. This rifle has a 24" barrel, 8 round capacity, and is chambered in .30 cal. It has a December 1950 DOM Barrel, springfield bolt, springfield trigger group, and bright bore. SER#2595441.



Springfield Armory M1 Garand .30 Cal Semi-Auto Rifle

Lot #105 (Sale Order 111 of 304)

Springfield Armory M1 Garand .30 Cal Semi-Auto Rifle. This rifle has a 24" barrel, 8 round capacity, and is chambered in .30 cal. Barrel Dated 10/63, Springfield Bolt and trigger group. Stock has been sanded, no cartouche remains. SER#558722.



Inland DIV. M1 Carbine .30 Cal Semi-Auto Rifle

Lot #106 (Sale Order 112 of 304)

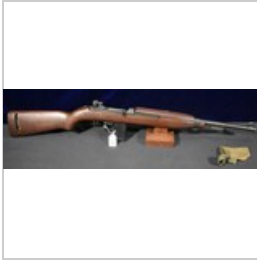
Inland DIV. M1 Carbine .30 Cal Semi-Auto Rifle. This rifle has a 18" barrel, two 15 round detachable magazines, and is chambered in .30 cal. It comes with US marked case for both magazines, and US marked muzzle cover. It features a M2 stock, 4 pin hand guard, comes with utica M4 bayonet, correct sling, and a unit marking that appears to be from the Korean War. SER#6765830.



WWII M1 Carbine Leather Scabbard

Lot #106A (Sale Order 113 of 304)

WWII M1 Carbine Leather Scabbard marked J.Q.N.D/1945/ENS. Indicating that it was manufactured by Jeffersonville Quartermaster Intermediate Depot, Indiana in 1945. ENS is the inspectors mark. 24" overall length. See attached photos for more detail.



Inland DIV. M1 Carbine .30 Cal Semi-Auto Rifle

Lot #107 (Sale Order 114 of 304)

Inland DIV. M1 Carbine .30 Cal Semi-Auto Rifle This rifle has a 18" barrel, 15 round detachable magazine, and is chambered in .30 cal. It comes with a US marked muzzle cover, and features a 2 Pin handgaurd, and Inland barrel dated 4/44. SER#5145368.



Inland DIV. M1 Carbine .30 Cal Semi-Auto Rifle

Lot #108 (Sale Order 115 of 304)

Inland DIV. M1 Carbine .30 Cal Semi-Auto Rifle. This rifle has a 18" barrel, 15 round detachable magazine, and is chambered in .30 cal. Features Barrel dated 10/44 , m2 stock has been refinihsed, 2 pin handgaurd, stamped on the right side of the stock is Toledo Police Department. Comes with US marked muzzle cover. SER#6313538



Inland DIV. M1 Carbine .30 Cal Semi-Auto Rifle

Lot #109 (Sale Order 116 of 304)

Inland DIV. M1 Carbine .30 Cal Semi-Auto Rifle. This rifle has a 18" barrel, 15 round detachable magazine, and is chambered in .30 cal.2 Pin handgaurd, Inland barrel dated 9/44, stock has been sanded.



Norinco MAK-90 Sporter 7.62x39MM Semi-Auto Rifle

Lot #110 (Sale Order 117 of 304)

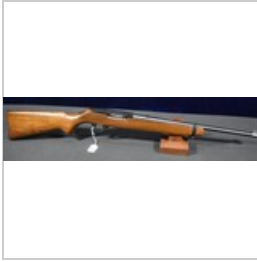
Norinco MAK-90 Sporter 7.62x39MM Semi-Auto Rifle. This rifle has a 16" barrel, 15 round magazine, and is chambered in 7.62x39MM. See attached photos for more detail. SER#9491210.



Ruger 10/22 Carbine .22 Semi-Auto Rifle

Lot #111 (Sale Order 118 of 304)

Ruger 10/22 Carbine .22 Semi-Auto Rifle. This rifle has a 18.5" barrel, 10 shot rotary magazine, and is chambered in .22LR. Includes factory manual, tasco 3-7x20 scope, and eagle international extended magazine. See attache photos for more detail. SER#241-56581.



Ruger 10/22 Carbine .22 Semi-Auto Rifle

Lot #112 (Sale Order 119 of 304)

Ruger 10/22 Carbine .22 Semi-Auto Rifle. This rifle has a 18.5" barrel, 10 shot rotary magazine, and is chambered in .22LR. With factory box on Title. See attached photos for more detail. SER#110-54243.



Remington O3-A3 30-06 Semi-Auto Rifle

Lot #113 (Sale Order 120 of 304)

Remington O3-A3 30-06 Semi-Auto Rifle. This rifle has a 24" barrel, 8 round capacity, and is chambered in .30-06. This rifle has a Barrel Dated 7/43, Excellent cartouches including remington and rock island arsenal on the stock, comes with sling. Stock stamped with rack number 3305. If you have been looking for a O3/A3 this is a very fine example. See attached photos for more detail. SER# 3863305.



Remington US Model of 1917 .30 Cal Semi-Auto Rifle

Lot #114 (Sale Order 121 of 304)

Remington US Model of 1917 .30 Cal Semi-Auto Rifle . This rifle has a 26" barrel, 5 round capacity, 30-06. Four digit serial number indicating first few months of production, June 1918 barrel, stock shows some catouche. See attached photos for more detail. SER# 2441.



Lithgow SMLE No.1 MK3 .303 British Rifle

Lot #115 (Sale Order 122 of 304)

Lithgow SMLE No.1 MK3 .303 British Rifle. This rifle has a 25.2" barrel, 10 round magazine, and is chambered in .303 British. Comes with silent sling, and bayonet with cover. Gun rebuilt for a military shooter, and is in like new condition. See attached photos for more detail. SER# 13033.



Fazakerley SMLE No.4 MK1 .303 British Rifle

Lot #116 (Sale Order 123 of 304)

Fazakerley SMLE No.4 MK1 .303 British Rifle. This rifle has a 25.2" barrel, 10 round magazine, and is chambered in .303 British. Is marked (F) 4/49 indicating that is was manufacutered in Royal Ordnance Factory at Fazakerley, Liverpool in April 1949. See attached photos for more detail. SER# 95696.



Victorian BSA Martini Cadet .310 Rifle

Lot #117 (Sale Order 124 of 304)

Victorian BSA Martini Cadet .310 Rifle. This rifle has a 25" barrel, and is chambered in .310 cal. Has kangaroo stamped on top of receiver where it meets the barrel. See attached photos for more detail. SER# 40964.



Airisaka Type 38 6.5JAP Rifle

Lot #118 (Sale Order 125 of 304)

Airisaka Type 38 6.5JAP Rifle. This rifle has a 31.4" barrel, 5 round internal magazine, and is chambered in 6.5 JAP. This rifle features a full mum, and is in much better than average condition. See attached photos for more detail. SER# 67303.



Airisaka Type 99 7.5 JAP Rifle

Lot #119 (Sale Order 126 of 304)

Airisaka Type 99 7.5 JAP Rifle. This rifle has a 25.9" barrel, 5 round internal magazine, and is chambered in 7.7 JAP. No mum, see attached photos for more detail. SER#2466.



Airisaka Type 99 7.5 JAP Rifle

Lot #120 (Sale Order 127 of 304)

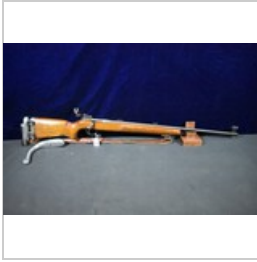
Airisaka Type 99 7.5 JAP Rifle. This rifle has a 25.9" barrel, 5 round internal magazine, and is chambered in 7.7 JAP. Full mum, see attached photos for more detail. SER#89237.



Airisaka Type 99 Sporterized 7.5JAP Rifle

Lot #121 (Sale Order 128 of 304)

Airisaka Type 99 Sporterized 7.5JAP Rifle. This rifle has a 25.9" barrel, 5 round internal magazine, and is chambered in 7.7 JAP. Full mum, see attached photos for more detail. SER#20631.



Remington 513-T MATCHMASTER .22 Bolt Action Rifle

Lot #122 (Sale Order 129 of 304)

Remington 513-T MATCHMASTER .22 Bolt Action Rifle. This rifle has a 27" barrel, 6 shot magazine, and is chambered in .22lr. This remington matchmaster has a redfield target sight with windage and elevation adjustments, and custom freeland fully adjustable stock with shoulder horn. This very well cared for example comes with one matching marked remington mag, and leather sling. This rifle has a heavy bull barrel, and it weights 11lbs in total. See attached photos for more detail. SER# 146090.



Tula TOZ-8 Soviet Military Training Rifle in .22

Lot #123 (Sale Order 130 of 304)

Tula TOZ-8 Soviet Military Training Rifle in .22. This rifle has a 25" barrel, and is chambered in .22LR. T in triangle proof, with 1935 under it on top of barrel. Features 250 yard adjustable sight for elevation, and includes sling. See attached photos for more detail. SER# 79788.



O.F Mossberg & Sons, INC. Model 44U.S. (a) Rifle in .22

Lot #124 (Sale Order 131 of 304)

O.F Mossberg & Sons, INC. Model 44U.S. (a) Rifle in .22. This rifle has a 26" barrel, 7 round capacity, and is chambered in .22LR. This rifle comes with a adjustable Mossberg-Microclick S-100 Sight package, the front sight has four different pins, and all are in tact and function properly, these are usually missing or broken on this model. See attached photos for more detail. No visible serial number.



Savage-N.R.A Match Rifle Model 19 Bolt Action Rifle in .22

Lot #125 (Sale Order 132 of 304)

Savage-N.R.A Match Rifle Model 19 Bolt Action Rifle in .22. This rifle has a 25" barrel, 7 round magazine, and is chambered in 22LR. This rifle bears serial number 32390 with full military style stock, original swivel sling mounts, bolt group, and Savage Arms Corp. Magazine stamped April 28, 1908. See attached photos for more detail. SER#32390.



Scarce Savage Model 1912 22 L.R. Automatic Rifle

Lot #126 (Sale Order 133 of 304)

Scarce Savage Model 1912 22 L.R. Automatic Rifle . This 22 caliber semi automatic takedown rifle has a 20" barrel, open sights, factory correct 7 round magazine, blued, with walnut stock. Left side of forearm DF written on surface on wood. This rifle was manufactured for a short period of time between 1912-1916. SER#2612.



Remington TARGETMASTER Model 41-P .22 Rifle

Lot #127 (Sale Order 134 of 304)

Remington TARGETMASTER Model 41-P .22 Rifle. This rifle has a 27" barrel, and is chambered in .22S/L/LR. This rifle features a rear peep sight, and hooded front sight. This rifle was manufactured for a short period between 1936-1940. See attached photos for more detail. No visible serial number.



Browning BAR .22 Semi-Auto Rifle

Lot #128 (Sale Order 135 of 304)

Browning BAR .22 Semi-Auto Rifle. This semi-automatic is chambered in .22LR, features take down design, with 19.25" barrel, and 11-Round Tubular Magazine, fed through hole in middle of buttstock. Blued finish, with checkered walnut stock, and beavertailed forearm. A very fine rifle. See attached photos for more detail. SER# 8T 98602.



1902 Colt Lightning .22 Rifle

Lot #129 (Sale Order 136 of 304)

1902 Colt Lightning .22 Rifle. This lighting slide-action small-frame rifle has the standard 24" barrel, blued finish, and walnut stock. Octagon barrel stamped with Colt Name, Hartford Address, and patent dates ending Feb 22.87. Rampant Colt on left side of receiver is very light, but visible. See attached photos for more detail. Action is very crisp and fully functional. See photos for more details. SER# 70927.



Winchester Model 90 3rd Model Takedown .22 Rifle

Lot #130 (Sale Order 137 of 304)

Winchester Model 90 3rd Model .22 Rifle. This slide-action is top ejecting with a 18" octagon barrel, with magazine tube. Original crescent buttplate is intact. Third models chambered in 22LR have been bringing premiums at auction. See attached photos for more detail. SER# 782792.



Winchester Model 61 Takedown .22L Rifle

Lot #131 (Sale Order 138 of 304)

Winchester Model 61 .22 Rifle. This rifle has a 24" round barrel, chambered in 22LR. Metal finish in nickel, and side of receiver was tapped for scope. Right forward front of buttstock has piece missing. Collapsible rear peep sight in tact. See attached photos for more detail. SER# 92106.



Winchester Model 62 Takedown .22S/L/LR Rifle

Lot #132 (Sale Order 139 of 304)

Winchester Model 62 Takedown .22S/L/LR Rifle. Rifle has a 23" round barrel, and is chambered for 22 Short/Long and Long Rifle cartridges. This pre-war model features a small slide handle, plain walnut stock, and 10-groove slide handle with crack. Action remains crisp, and original WRA co buttplate is undamaged. See attached photos for more detail. SER# 59722A.



Winchester Model 62 Takedown .22S/L/LR Rifle

Lot #133 (Sale Order 140 of 304)

Winchester Model 62 Takedown .22S/L/LR Rifle. Rifle has a 23" round barrel, and is chambered for 22 Short/Long and Long Rifle cartridges. This example at some point was re-blued and has the longer 17-groove slide handle. See attached photos for more detail. SER# 193364.



Winchester Model 62A Takedown .22S/L/LR Rifle

Lot #134 (Sale Order 141 of 304)

Winchester Model 62A Takedown .22S/L/LR Rifle. This rifle has a 23" round barrel, and is chambered for 22 Short/Long and Long Rifle cartridges. Has 17-groove flat-bottomed slide handle, and original WRA Co. buttplate is undamaged. See attached photos for more detail. SER# 300337.



Winchester Model 62A Takedown .22S/L/LR Rifle

Lot #135 (Sale Order 142 of 304)

Winchester Model 62A Takedown .22S/L/LR Rifle. This rifle has a 23" round barrel, and is chambered for 22 Short/Long and Long Rifle cartridges. Has 17-groove flat-bottomed slide handle, and original WRA Co. buttplate is undamaged. This is an excellent example, with only minor handling marks on wood. See attached photos for more detail. SER# 302586.



Winchester Model 62A Takedown .22S/L/LR Rifle

Lot #136 (Sale Order 143 of 304)

Winchester Model 62A Takedown .22S/L/LR Rifle. This rifle has a 23" round barrel, and is chambered for 22 Short/Long and Long Rifle cartridges. Has 17-groove slide handle, and original WRA Co. buttplate is undamaged. This is an excellent example, with only minor handling marks on wood. See attached photos for more detail. SER# 122157.



Winchester Model 1906 "Lunch Box" Rifle in .22 cal.

Lot #137 (Sale Order 144 of 304)

Winchester Model 1906 Rifle with a 20" barrel, and a maximum capacity of 15 rounds fed from its tube magazine with 22 Short. It is chambered in 22 Short/Long/Long Rifle. See attached photos for more detail. No visible serial number and referred to as a "Lunch Box" Gun as a factory worker most likely took the parts home to make a rifle as there is NO SERIAL NUMBER STAMPED ON LOWER TANG NOR ON FORWARD BOTTOM OF BREECH BLOCK. We have included close up photos of these areas and it clearly has not been altered. Metal is original.



Winchester Model 1904 in .22 cal.

Lot #138 (Sale Order 145 of 304)

Winchester Model 1904 with 21" barrel, chambered in 22 Short/Long/Extra Long. See attached photos for more detail. No visible serial number.



Winchester Model 74 Rifle in .22 cal.

Lot #139 (Sale Order 146 of 304)

Winchester Model 74 Rifle with 24" barrel, 14 round tube magazine, and is chambered in 22LR. This rifle features a casing deflector over chamber. See attached photos for more detail. SER#57785.



Rossi Model 62SA Rifle in .22 cal.

Lot #140 (Sale Order 147 of 304)

Rossi Model 62SA Rifle with 23" barrel, 10 round tube magazine, and is chambered in 22 Short/Long/Long Rifle. See attached photos for more detail. SER# 6229617.



J. Stevens Arms Co Model 1915 Favorite Rifle in .32 Long

Lot #141 (Sale Order 148 of 304)

J. Stevens Arms Co Model 1915 Favorite with a 22.5" barrel, chambered in 32 Long. See attached photos for more detail. SER#K622.



J. Stevens Arms & Tools Model 70 in .22 cal.

Lot #142 (Sale Order 149 of 304)

J. Stevens Arms & Tools Model 70 with 20" barrel, chambered in 22LR. See attached photos for more details. SER# 297.



Winchester Big Bore Mod 94XTR .375 WIN Lever Action Rifle

Lot #143 (Sale Order 150 of 304)

Winchester Big Bore Mod 94XTR .375 WIN Lever Action Rifle with 20" barrel. Receiver tapped for included tasco 2-7x32 scope. See attached photos for more details. This large bore lever action rifle remains in excellent condition, showing little, if any use. SER#BB03616.



Winchester Model 94 Rifle in 30-30 Win

Lot #144 (Sale Order 151 of 304)

Winchester Model 94 Rifle in 30-30 Win with 20" barrel. Comes in original factory box with instructions, blank warranty card, and original tags still on gun. Excellent example, showing little, if any use. SER# 3484700.



Winchester Model 94 XTR Mississippi River Gambler Rifle in 30-30 Win

Lot #145 (Sale Order 152 of 304)

Winchester Model 94 XTR Mississippi River Gambler Rifle in 30-30 Win with 20" barrel. Comes with original factory box, and tag still on gun. See attached photos for more detail. SER#



Winchester Buffalo Bill 30-30 WIN Lever Action Rifle

Lot #146 (Sale Order 153 of 304)

Winchester Buffalo Bill 30-30 WIN Lever Action Rifle with 20" octagon barrel. See attached photos for more detail. SER#



Winchester Model 94 in 30-30 Win Lever Action Rifle

Lot #147 (Sale Order 154 of 304)

Winchester Model 94 in 30-30 Win Lever Action Rifle with 20" barrel. See attached photos for more detail. SER#2763227.



Winchester Model 9422 .22 Magnum Lever Action Rifle

Lot #148 (Sale Order 155 of 304)

Winchester Model 94 .22 Magnum Lever Action Rifle with 20" barrel. See attached photos for more detail. SER#F112880.



Winchester Model 9422 .22 Magnum Lever Action Rifle

Lot #149 (Sale Order 156 of 304)

Winchester Model 94 .22 Magnum Lever Action Rifle with 20" barrel. See attached photos for more detail. SER#F100597.



Winchester Model 9422 .22S/LR Lever Action Rifle

Lot #150 (Sale Order 157 of 304)

Winchester Model 94 in .22Short/Long/Long Rifle with 20" barrel. See attached photos for more detail.



Marlin Model 336 in 30-30 Win Lever Action Rifle

Lot #151 (Sale Order 158 of 304)

Marlin Model 336 in 30-30 Win with 20" barrel. See attached photos for more detail. SER#26120118.



Rossi Model 92 in 44 Magnum Lever Action Rifle

Lot #152 (Sale Order 159 of 304)

Rossi Model 92 in 44 Magnum with 20" barrel. See attached photos for more detail. SER#M159428.



Zabala Hermanos .410GA Side by Side Shotgun

Lot #153 (Sale Order 160 of 304)

Zabala Hermanos .410GA Side by Side Shotgun with 27.75" barrel. See attached photos for more detail. Beautiful case hardening on receiver. SER# AG9241.



Winchester Model 20 in .410GA

Lot #154 (Sale Order 161 of 304)

Winchester Model 20 in .410GA with 22.75" barrel, full choke, and adjustable rear peep sight. See attached photos for more detail. SER#11938



Springfield Model 67F 410GA Shotgun

Lot #155 (Sale Order 162 of 304)

Springfield Model 67F 410GA Shotgun with 26" barrel, and 3" chamber. See attached photos for more detail. SER#A419977.



Mossberg Model 500E 410GA Shotgun

Lot #156 (Sale Order 163 of 304)

Mossberg Model 500E 410GA Shotgun with 24" barrel, and full choke. See attached photos for more details. SER# L137331.



Savage Arms Model 220L-D 410GA Single Shot Shotgun

Lot #157 (Sale Order 164 of 304)

Savage Arms Model 220L-D 410GA Single Shot Shotgun with 26" barrel, this gun has medium blonde colored wood. No visible serial number.



New England Firearms Pardner SB1 .410GA Single Shot Shotgun

Lot #158 (Sale Order 165 of 304)

New England Firearms Pardner SB1 .410GA Single Shot Shotgun with 25.5" barrel, full choke, and 3" chamber. Moderate case hardening on receiver. SER# 352427.



Leinad Inc. DS 410 .410GA Side by Side Shotgun

Lot #159 (Sale Order 166 of 304)

Leinad Inc. DS 410 .410GA Side by Side Shotgun with 18" barrel, at 31 inches of overall length. See attached photos for more detail. SER# S00002866.



F.I Industries Survival Takedown .22/.410GA Rifle Over Shotgun

Lot #160 (Sale Order 167 of 304)

F.I Industries Survival Takedown .22/.410GA Rifle Over Shotgun with 20" swivel barrel, and 3" chamber. See attached photos for more details. SER# A2126.



1961 Winchester Model 42 410GA Shotgun

Lot #161 (Sale Order 168 of 304)

1961 Winchester Model 42 410GA Shotgun. This model 42 has a 26" modified barrel, is all numbers matching, and has excellent bluing. SER#153264.



1951 Winchester Model 42 410GA Shotgun

Lot #162 (Sale Order 169 of 304)

1951 Winchester Model 42 410GA Shotgun. This model 42 has a 28" modified barrel, is all numbers matching, and has excellent bluing, with a few minor scratches on both side of receiver. SER#88610.



1951 Winchester Model 42 410GA Shotgun

Lot #163 (Sale Order 170 of 304)

1951 Winchester Model 42 410GA Shotgun. This model 42 has a 26" full choke barrel, is all numbers matching, and has excellent bluing. SER#87614.



RARE Winchester Model 12 in 28 GA

Lot #164 (Sale Order 171 of 304)

RARE Winchester Model 12 in 28 GA. This seldom seen model 12 has a 26.5" 2 3/4 Improved Cylinder barrel, all matching numbers. This shotgun has bluing loss on receiver area but it appears to be a honest, all original example. SER#723089.



Winchester Model 1912 20GA Shotgun

Lot #165 (Sale Order 172 of 304)

Winchester Model 1912 20GA Shotgun with 28" barrel, and full choke. Made in 1913, second year on manufacture. Matching receiver and barrel. See attached photos for more detail. SER#30191.



Winchester Model 12 20GA Shotgun

Lot #166 (Sale Order 173 of 304)

Winchester Model 12 20GA Shotgun with 26" barrel, and modified choke. Year of manufacture 1936. Receiver and barrel matching. See attached photos for more detail. SER#712569.



Winchester Model 12 20GA Shotgun

Lot #167 (Sale Order 174 of 304)

Winchester Model 12 20GA Shotgun with 28" barrel, and full choke. Year of manufacture 1936. Receiver and barrel matching. See attached photos for more detail. SER#713366.



Winchester Model 12 20GA Shotgun

Lot #168 (Sale Order 175 of 304)

Winchester Model 12 20GA Shotgun with 28" barrel, and modified choke. Year of manufacture 1948. Receiver and barrel matching. See attached photos for more detail. SER#1144828.



Winchester Model 12 20GA Shotgun

Lot #169 (Sale Order 176 of 304)

Winchester Model 12 20GA Shotgun with 28" barrel, and full choke. Year of manufacture 1953. Receiver and barrel matching. See attached photos for more detail. SER#1354569.



Winchester Model 12 20GA Shotgun

Lot #170 (Sale Order 177 of 304)

Winchester Model 12 20GA Shotgun with 28" barrel, and modified choke. Year of manufacture 1956. Receiver and barrel matching. See attached photos for more detail. SER#1586916.



Winchester Model 12 20GA Shotgun

Lot #171 (Sale Order 178 of 304)

Winchester Model 12 20GA Shotgun with 28" barrel, and modified choke. Year of manufacture 1956. Receiver and barrel matching. See attached photos for more detail. SER#1770097.



Winchester Model 1912 16GA Shotgun

Lot #172 (Sale Order 179 of 304)

Winchester Model 1912 16GA Shotgun with 26" barrel, and full choke. Fourth Year of manufacture, 1915. Receiver and barrel matching. See attached photos for more detail. SER#89388.



Winchester Model 12 16GA Shotgun

Lot #173 (Sale Order 180 of 304)

Winchester Model 12 16GA Shotgun with 28" barrel, and full choke. Year of manufacture 1936. Receiver and barrel matching. See attached photos for more detail. SER#689322.



Winchester Model 12 16GA Shotgun

Lot #174 (Sale Order 181 of 304)

Winchester Model 12 16GA Shotgun with 28" barrel, and modified choke. Year of manufacture 1941. Receiver and barrel matching. See attached photos for more detail. SER#877550.



Winchester Model 12 16GA Shotgun

Lot #175 (Sale Order 182 of 304)

Winchester Model 12 16GA Shotgun with 28" barrel, and modified choke. Year of manufacture 1942. Receiver and barrel matching. See attached photos for more detail. SER#909114.



Winchester Model 12 16GA Shotgun

Lot #176 (Sale Order 183 of 304)

Winchester Model 12 16GA Shotgun with 28" barrel, and full choke. Year of manufacture 1947. Receiver and barrel matching. See attached photos for more detail. SER#1046433.



Winchester Model 12 16GA Shotgun

Lot #177 (Sale Order 184 of 304)

Winchester Model 12 16GA Shotgun with 28" barrel, and modified choke. Year of manufacture 1942. Receiver and barrel matching. See attached photos for more detail. SER#914330.



Winchester Model 12 16GA Shotgun

Lot #178 (Sale Order 185 of 304)

Winchester Model 12 16GA Shotgun with 28" barrel, and modified choke. Year of manufacture 1948. Receiver and barrel matching. See attached photos for more detail. SER#1134864.



Winchester Model 12 16GA Shotgun

Lot #179 (Sale Order 186 of 304)

Winchester Model 12 16GA Shotgun with 28" barrel, and modified choke. Year of manufacture 1948. Receiver and barrel matching. See attached photos for more detail. SER#1139973.



Winchester Model 12 12GA Shotgun

Lot #180 (Sale Order 187 of 304)

Winchester Model 12 12GA Shotgun with 21" barrel, and improved cylinder choke. Year of manufacture 1942. Receiver and barrel matching. See attached photos for more detail. SER#937978.



Winchester Model 12 12GA Shotgun

Lot #181 (Sale Order 188 of 304)

Winchester Model 12 12GA Shotgun with 21" barrel, and improved cylinder choke. Year of manufacture 1942. Receiver and barrel matching. See attached photos for more detail. SER#1908384.



Winchester Model 12 12GA Shotgun

Lot #182 (Sale Order 189 of 304)

Winchester Model 12 12GA Shotgun with 28" barrel, and full choke. Year of manufacture 1929. Receiver and barrel matching. See attached photos for more detail. SER#594575.



Winchester Model 12 12GA Shotgun

Lot #183 (Sale Order 190 of 304)

Winchester Model 12 12GA Shotgun with 30" barrel, and full choke. Year of manufacture 1947. Receiver and barrel matching. See attached photos for more detail. SER#1037215.



Winchester Model 12 12GA Shotgun

Lot #184 (Sale Order 191 of 304)

Winchester Model 12 12GA Shotgun with 28" barrel, and modified choke. Year of manufacture 1951. Receiver and barrel matching. See attached photos for more detail. SER#1281621.



Winchester Model 1897 16GA Shotgun

Lot #185 (Sale Order 192 of 304)

Winchester Model 1897 16GA Shotgun with 25" barrel, and full choke. Year of manufacture 1912. See attached photos for more detail. SER#519036.



Winchester Model 97 16GA Shotgun

Lot #186 (Sale Order 193 of 304)

Winchester Model 97 16GA Shotgun with 26" barrel, and modified choke. Year of manufacture 1941. Receiver and barrel are matching. See attached photos for more detail. SER#901963.



Winchester Model 97 12GA Shotgun

Lot #187 (Sale Order 194 of 304)

Winchester Model 97 12GA Shotgun with 30" barrel, and full choke. Year of manufacture 1945. Receiver and barrel are matching. See attached photos for more detail. SER#916897.



FN Browning Auto 5 12GA Semi-Auto Shotgun

Lot #188 (Sale Order 195 of 304)

FN Browning Auto 5 12GA Semi-Auto Shotgun with 27.5" barrel. See attached photos for more detail. SER# 78636.



Browning Twenty Auto-5 20GA Semi-Auto Shotgun

Lot #189 (Sale Order 196 of 304)

Browning Twenty Auto-5 20GA Semi-Auto Shotgun with 27.5" barrel. See attached photos for more detail. SER#1Z54582.



Winchester Super-X Model 1 12GA Semi-Auto Shotgun

Lot #190 (Sale Order 197 of 304)

Winchester Super-X Model 1 12GA Semi-Auto Shotgun with 27.5" barrel. See attached photos for more detail. SER# M2970.



P. Beretta Model 1200 12GA Semi-Auto Shotgun

Lot #191 (Sale Order 198 of 304)

P. Beretta Model 1200 12GA Semi-Auto Shotgun with 28" barrel and modified choke. See attached photos for more detail. SER# T08574E.



Remington Sportsman 48 16GA Semi-Auto Shotgun

Lot #192 (Sale Order 199 of 304)

Remington Sportsman 48 16GA Semi-Auto Shotgun with 27.5" barrel and modified choke. See attached photos for more detail. SER#3538214.



Remington 870 Express Magnum 12GA Pump Action Shotgun

Lot #193 (Sale Order 200 of 304)

Remington 870 Express Magnum 12GA Pump Action Shotgun with 20" barrel, and 2 3/4" and 3" chamber. See attached photos for more detail. SER# C150662M.



Winchester Ranger Model 120 12GA Pump Action Shotgun

Lot #194 (Sale Order 201 of 304)

Winchester Ranger Model 120 12GA Pump Action Shotgun with 28.5" barrel. See attached photos for more detail. SER# L2129351.



Ted Williams Sears Model 200 12GA Shotgun

Lot #195 (Sale Order 202 of 304)

Ted Williams Sears Model 200 12GA Shotgun. This pump action shotgun has a 27" overall barrel length with poly choke, and ventilated rib. Chambered 2 3/4" 12GA, Ted Williams Stamped Signature on barrel. Bluing, wood, and overall condition of shotgun remains excellent. See attached photos for more detail. SER# P159328.



J.C. Higgins Model 20 12GA Pump Action Shotgun

Lot #196 (Sale Order 203 of 304)

J.C. Higgins Model 20 12GA Pump Action Shotgun 26" overall barrel length including poly choke. Right side of receiver has a few scratches, otherwise wood, and shotgun remain in excellent condition. See attached photos for more detail. No visible serial number.



Mossberg Model 500A 12GA Shotgun

Lot #197 (Sale Order 204 of 304)

Mossberg Model 500A 12GA Shotgun with 28" barrel. This pump action shotgun has light wear, and minor handling marks. See attached photos for more detail. SER# B56787.



The Original Marlin Goose Gun 12GA Shotgun

Lot #198 (Sale Order 205 of 304)

The Original Marlin Goose Gun 12GA Shotgun with 36" barrel. This original model Bolt Action Goose Gun comes with correct original metal two round magazine, and sling. Wood has some handling marks. See attached photos for more detail. SER# 25714627.



Stevens Savage Arms 58D 12GA Bolt Action Shotgun

Lot #199 (Sale Order 206 of 304)

Stevens Savage Arms 58D 12GA Bolt Action Shotgun with 25" barrel. Comes with original 2 round magazine, stamped "12GA-B." Rear magazine well screw, in front of trigger guard is missing. See attached photos for more detail. SER# A682046.



Savage Left Handed Model 110-L 30-06 Rifle

Lot #200 (Sale Order 207 of 304)

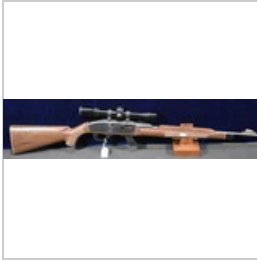
Savage Left Handed Model 110-L 30-06 Rifle with 21.5" barrel. Factory tapped for scope, although no scope has ever been mounted on this rifle. Minor handling marks to wood, otherwise in excellent condition with original aluminum buttplate. See attached photos for more detail. SER# 54138



Remington Mohawk 10C .22 Semi-Auto Rifle

Lot #201 (Sale Order 208 of 304)

Remington Mohawk 10C .22 Semi-Auto Rifle with 19.6" barrel, 10 round detachable magazine, chambered in .22 Long Rifle only. Comes with Weaver V22-A Scope. Minor scratching on left side of receiver. Excellent condition with no cracks. Stock Color is Mohawk Brown. See attached photos for more detail. SER#2476506.



Remington Mohawk 10C .22 Semi-Auto Rifle

Lot #202 (Sale Order 209 of 304)

Remington Mohawk 10C .22 Semi-Auto Rifle with 19.6" barrel, 10 round detachable magazine, chambered in .22 Long Rifle only. Comes with Bushnell SportView Weatherproof scope. Excellent condition with no cracks. Stock Color is Mohawk Brown. See attached photos for more detail. SER#2502990.



Remington Nylon 11 .22 Bolt Action Rifle

Lot #203 (Sale Order 210 of 304)

Remington Nylon 11 .22 Bolt Action Rifle with 19.6" barrel, 10 round magazine, and chambered in .22 Short/Long/Long Rifle. Scratching on left side of receiver. See attached photos for more detail. Stock Color is Mohawk Brown. No visible serial number.



Remington Nylon 66 .22 Semi-Auto Rifle

Lot #204 (Sale Order 211 of 304)

Remington Nylon 66 .22 Semi-Auto Rifle with 19.6" barrel, 14 round tube fed magazine, and is chambered in .22 Long Rifle only. Has minor handling marks. See attached photos for more detail. Stock Color is Mohawk Brown. No visible serial number.



Remington Nylon 66 .22 Semi-Auto Rifle

Lot #205 (Sale Order 212 of 304)

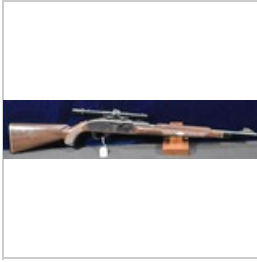
Remington Nylon 66 .22 Semi-Auto Rifle with 19.6" barrel, 14 round tube fed magazine, and is chambered in .22 Long Rifle only. Has handling marks on right side of stock. See attached photos for more detail. Stock Color is Mohawk Brown. SER# 401647.



Remington Nylon 66 .22 Semi-Auto Rifle

Lot #206 (Sale Order 213 of 304)

Remington Nylon 66 .22 Semi-Auto Rifle with 19.6" barrel, 14 round tube fed magazine, and is chambered in .22 Long Rifle only. Receiver has scratches, and nylon stock has handling marks. Stock Color is Mohawk Brown. See attached photos for more detail. No visible serial number.



Remington Nylon 66 .22 Semi-Auto Rifle

Lot #207 (Sale Order 214 of 304)

Remington Nylon 66 .22 Semi-Auto Rifle with 19.6" barrel, 14 round tube fed magazine, and is chambered in .22 Long Rifle only. Includes Springfield 1540B 4X15 scope. Bottom left corner of right side of receiver has indent, nylon has handling marks. Stock Color is Mohawk Brown. See attached photos for more detail. SER#441056.



Remington Nylon 66 .22 Semi-Auto Rifle

Lot #208 (Sale Order 215 of 304)

Remington Nylon 66 .22 Semi-Auto Rifle with 19.6" barrel, 14 round tube fed magazine, and is chambered in .22 Long Rifle only. Both side of receiver have scratching, and nylon has handling marks. Stock Color is Apache Black, with Chrome Receiver. See attached photos for more detail. No visible serial number.



Remington Nylon 66 .22 Semi-Auto Rifle

Lot #209 (Sale Order 216 of 304)

Remington Nylon 66 .22 Semi-Auto Rifle with 19.6" barrel, 14 round tube fed magazine, and is chambered in .22 Long Rifle only. Includes Weaver V22-A scope. Nylon Stock has handling marks and scratches, and receiver has handling marks. Stock Color is Mohawk Brown. See attached photos for more detail. No visible serial number.



Remington Nylon 66 .22 Semi-Auto Rifle

Lot #210 (Sale Order 217 of 304)

Remington Nylon 66 .22 Semi-Auto Rifle with 19.6" barrel, 14 round tube fed magazine, and is chambered in .22 Long Rifle only. Includes Tasco 3-9x32 Scope. Both side of receiver have scratching, and nylon has a scratch on left side of stock. Stock Color is Apache Black. See attached photos for more detail. No visible serial number.



Remington Nylon 76 .22 Lever Action Rifle

Lot #211 (Sale Order 218 of 304)

Remington Nylon 76 .22 Lever Action Rifle with 19.6" barrel, 14 round tube fed magazine, and is chambered in .22 Long Rifle only. Includes Tasco 3-9x32 Scope. Both side of receiver have scratching, and nylon has a scratch on left side of stock. Stock color is Mohawk Brown. See attached photos for more detail. No visible serial number.



Remington Apache 77-Seneca Green .22 Semi-Auto Rifle

Lot #212 (Sale Order 219 of 304)

Remington Apache 77 .22 Semi-Auto Rifle with 19.6" barrel, 14 round tube fed magazine, and is chambered in .22 Long Rifle only. Includes Tasco 3-9x32 Scope. Both side of receiver have stratching, and nylon has a scratch on left side of stock. Stock Color is Seneca Green. See attached photos for more detail. SER# A3278979.



CBC Nylon 66 .22 Semi-Auto Rifle

Lot #213 (Sale Order 220 of 304)

CBC Nylon 66 .22 Semi-Auto Rifle with 19.6" barrel, 14 round tube fed magazine, and is chambered in .22 Long Rifle only. Overall spotting on receiver, nylon stock is in tact with some handling marks. Color is black. See attached photos for more information. SER# GR57575.



Rau Arms Corp Wildcat Rifle in .22 cal.

Lot #214 (Sale Order 221 of 304)

Rau Arms Corp Wildcat Rifle with 17.5" rotating barrel assembly, chambered in .22 Short/Long/Long Rifle. See attached photos for more detail. SER# A2910.



O.F. Mossberg Model 142-A Rifle in .22 cal.

Lot #215 (Sale Order 222 of 304)

O.F. Mossberg Model 142-A Rifle with 18" barrel, chambered in .22 Short/ Long Rifle. No magazine. See attached photos for more detail. No visible serial number.



Winchester Model 275 Rifle in .22 cal.

Lot #216 (Sale Order 223 of 304)

Winchester Model 275 Rifle with 20" barrel, chambered in .22 WIN MAG Rimfire. Includes Tasco 3-7x20 Scope. See attached photos for more detail. SER#459815.



Winchester Model 190 Rifle in .22 cal.

Lot #217 (Sale Order 224 of 304)

Winchester Model 190 Rifle with 20.5" barrel, chambered in 22 Long/ Long Rifle. See attached photos for more detail. SER# B1605121.



Winchester Model 68 Rifle in .22 cal.

Lot #218 (Sale Order 225 of 304)

Winchester Model 68 Rifle with 27" barrel, chambered in .22 Short/ Long/ Long Rifle. See attached photos for more detail. No visible serial number.



Springfield Model 187S Rifle in .22 cal.

Lot #219 (Sale Order 226 of 304)

Springfield Model 187S Rifle with 20" barrel, chambered in .22 Long Rifle. Comes with springfield 4x scope. See attached photos for more detail. SER# 489113.



Springfield Model 187S Rifle in .22 cal.

Lot #220 (Sale Order 227 of 304)

Springfield Model 187S Rifle with 20" barrel, chambered in .22 Long Rifle. See attached photos for more detail. SER# A882833.



Original-Geco-Karabiner-Model 1925 Bolt Action Rifle in 6MM Flobert

Lot #221 (Sale Order 228 of 304)

Original-Geco-Karabiner-Model 1925 Bolt Action Rifle in 6MM Flobert with 23" barrel. With Crown/B and Crown/U proofs on right side of barrel. See attached photos for more detail. SER# 144990.



J.G Anschutz 6MM Flobert Bolt Action Rifle

Lot #222 (Sale Order 229 of 304)

J.G Anschutz 6MM Flobert Bolt Action Rifle with 23.5" barrel. Top of barrel reads, "WAFFEN-JUNG, STUTTGART" Right side of barrel has proof mark Crown/C, Crown/B, and Crown/U. See attached photos for more detail. SER#91293.



J.G Anschutz 9MM Flobert Bolt Action Rifle

Lot #223 (Sale Order 230 of 304)

J.G Anschutz 9MM Flobert Bolt Action Rifle with 19.75" barrel. Right side of bolt and barrel stamped with Waffenmat proofs. Top of barrel reads, "J.G Anschutz Germaniawaffenwerk A.G. Zella Mehlis/ Thur" See attached photos for more detail. SER# 519054.



Original-JGA-Karabiner 9MM Flobert Bolt Action Rifle

Lot #224 (Sale Order 231 of 304)

Original-JGA-Karabiner 9MM Flobert Bolt Action Rifle with 23.5" barrel. Right side of barrel and bolt bear Waffenmat proof markings. Top of barrel reads, "J.G Anschutz Germaniawaffenwerk A.G. Zella Mehlis/ Thur" See attached photos for more detail. Very clean example, includes vintage sling. SER# 489980.



Remington Model 36 Shotgun 9MM Rimfire Rifle

Lot #225 (Sale Order 232 of 304)

Remington Model 36 Shotgun 9MM Rimfire Shotgun with 17.5" barrel, at 33.5" of overall length. Bolt assembly functions properly to cycle rifle, but trigger is soft and does not fire. Broke mainspring? See attached photos for more detail. No visible serial number.



Lot of Two H.M Quackenbush Saftey Cartridge Rifles in .22cal

Lot #226 (Sale Order 233 of 304)

Lot of Two H.M Quackenbush Saftey Cartridge Rifles with 18" barrels, chambered in .22 Rimfire. Gun one is complete and fully functional with chrome receiver and custom engraved wood. Gun two is parts only, missing rear sight, and does not cycle, stock is broken. See attached photos for more detail. No visible serial numbers.



Baikal IZH-18EM-M Basic 16GA Single Shot Shotgun

Lot #227 (Sale Order 234 of 304)

Baikal IZH-18EM-M Basic 16GA Single Shot Shotgun with 28.5" barrel. Includes sling. See attached photos for more detail. SER# 01051665.



Winchester Model 37 SteelBilt 16GA Single Shot Shotgun

Lot #228 (Sale Order 235 of 304)

Winchester Model 37 SteelBilt 16GA Single Shot Shotgun with 28" barrel. Small Chip in wood on right on right side of forearm. See attached photos for more detail. No visible serial number.



Springfield J. Stevens Model 94-A 12GA Single Shot Shotgun

Lot #229 (Sale Order 236 of 304)

Springfield J. Stevens Model 94-A 12GA Single Shot Shotgun with 30" barrel. See attached photos for more detail. No visible serial number.



Riverside Arms Co. 12GA Single Shot Shotgun

Lot #230 (Sale Order 237 of 304)

Riverside Arms Co. 12GA Single Shot Shotgun with 30" barrel. See attached photos for more detail. No visible serial number.



LeFever Arms Co. Nitro Special 12GA Side by Side Shotgun

Lot #231 (Sale Order 238 of 304)

LeFever Arms Co. Nitro Special 12GA Side by Side Shotgun with 30" barrel. Has Duck engraved in receiver, and chip in wood on top right of stock. See attached photos for more information. SER# 241065.



ANTIQUE LeFever Arms Co. 12GA Side by Side Shotgun

Lot #232 (Sale Order 239 of 304)

ANTIQUE LeFever Arms Co. 12GA Side by Side Shotgun with 20" barrel. Front sight bead missing. See attached photos for more detail. SER# 28334.



ANTIQUE N.R Davis & Sons 16GA Side by Side Shotgun

Lot #233 (Sale Order 240 of 304)

ANTIQUE N.R Davis & Sons 16GA Side by Side Shotgun with 19" barrel. Nathan R. Davis shotguns were extremely well made and competed with some of the very best manufactures. See attached photos for more details. SER# 27.



ANTIQUE New Haven Fire Arms Co. 12GA Side by Side Shotgun

Lot #234 (Sale Order 241 of 304)

ANTIQUE New Haven Fire Arms Co. 12GA Side by Side Shotgun with 18.5" barrel. Top of barrel marked "London Fluid Steel." See attached photos for more detail. SER# 2262.



1910 Gold Hibbard 16GA Side by Side Shotgun

Lot #235 (Sale Order 242 of 304)

1910 Gold Hibbard 16GA Side by Side Shotgun with 30.25". Gold hibbard was a trade name used only in 1910 on shotguns imported from Belgium by Crescent Firearms for Hibbard, Spencer, Bartlett, & Co. of Chicago, IL. See attached photos for more detail. SER# 8385.



ANTIQUE T. Parker 16GA Side by Side Shotgun

Lot #236 (Sale Order 243 of 304)

ANTIQUE T. Parker 16GA Side by Side Shotgun with 28" Belgium fine damascus stamped atop barrel. This shotgun was manufactured Henri Piper & Co Leige, Belgium between 1880-1898. See attached photos for more detail. SER# 2207.



Colts Pt. F. A. M. fg. Co. 12GA Side by Side Shotgun

Lot #237 (Sale Order 244 of 304)

Colts Pt. F. A. M. fg. Co. 12GA Side by Side Shotgun with 29.75" barrel.



ANTIQUÉ J.H. Sterling 12GA Side by Side Shotgun

Lot #238 (Sale Order 245 of 304)

ANTIQUÉ J.H. Sterling 12GA Side by Side Shotgun with 28" barrel. H.J Sterling was a trade was used by F. Dumoulin & Company of Leige, Belgium circa 1894-1914. See attached photos for more detail. No visible serial number.



Lot of Two American Gun Co. NY 12GA Side by Side Shotguns

Lot #239 (Sale Order 246 of 304)

Lot of Two American Gun Co. NY 12GA Side by Side Shotguns with 30" barrel. American Gun Co. New York stamped on both guns on left sidelock, although stamped style is different on each. Gun One SER#371200, Gun Two SER# 310390. Both guns for one money. See attached photos for more detail.



Amri-Italy Sport Reproduction-Springfield Model 1847 .69 Caliber Percussion Rifle

Lot #240 (Sale Order 247 of 304)

Amri-Italy Sport Reproduction-Springfield Model 1847 .69 Caliber Percussion Rifle with 42" barrel, 58" overall length. This Italian made Black-powder rifle has similar markings to the original Springfield, including eagle/us and Springfield 1847 on right hand sidelock plate, and US stamped atop buttstock plate. Wood is excellent, virtually no handling marks, nipple shows little if any sign of use. Mechanically very fine, action extremely crisp, about new condition. See attached photos for more detail. SER# L3615.



Amri-Italy Sport Reproduction- US Springfield Model 1859 .58 Caliber Percussion Rifle

Lot #241 (Sale Order 248 of 304)

Amri-Italy Sport Reproduction- US Springfield Model 1859 .58 Caliber Percussion Rifle with 40" barrel, and 56" overall length. This Italian made Black-powder rifle has similar markings to the original Springfield, including eagle/us and Springfield 1859 on right hand sidelock plate, and US stamped atop buttstock plate. Left side of stock bears cartouche. Wood is excellent, with a few minor handling marks, nipple shows little if any sign of use. Mechanically very fine, action extremely crisp, about new condition. See attached photos for more detail. SER# F0402 .



Amri-Italy Sport Reproduction- US Springfield Model 1861 .58 Caliber Percussion Rifle

Lot #242 (Sale Order 249 of 304)

Amri-Italy Sport Reproduction- US Springfield Model 1861 .58 Caliber Percussion Rifle with 40" barrel, and 56" overall length. This Italian made Black-powder rifle has simmlar markings to the original markings to the original springfield, including eagle/us and springfield 1861 on right hand sidelock plate, and US stamped atop buttstock plate. Left side of stock bears two cartouche markings. Wood is excellent, with virtually no handling marks, nipple shows little if any sign of use. Mechanically very fine, action extremely crisp, about new conditon. See attached photos for more detail. SER# S13243 .



Amri-Italy Sport Reproduction- US Springfield Model 1862 .58 Caliber Percussion Rifle

Lot #243 (Sale Order 250 of 304)

Amri-Italy Sport Reproduction- US Springfield Model 1862 .58 Caliber Percussion Rifle with 40" barrel, and 56" overall length. This Italian made Black-powder rifle has simmlar markings to the original markings to the original springfield, "C.S. Richmond VA 1862" stamped on right side lock plate. Wood is excellent, with virtually no handling marks, nipple shows little if any sign of use. Mechanically very fine, action extremely crisp, about new conditon. See attached photos for more detail. SER# R13279 .



A.Uberti Model 1851 Navy .36 Caliber Black Powder Revolver

Lot #244 (Sale Order 251 of 304)

A.Uberti Model 1851 Navy .36 Caliber Black Powder Revolver with 7.5" barrel, and original box See attached photos for more detail. SER# A34353.



A.Uberti Model 1861 Navy .36 Caliber Black Powder Revolver

Lot #245 (Sale Order 252 of 304)

A.Uberti Model 1861 Navy .36 Caliber Black Powder Revolver with 7.5" barrel, and original box See attached photos for more detail. SER# A36245.



A.Uberti Model 1851 Navy .36 Caliber Black Powder Revolver

Lot #246 (Sale Order 253 of 304)

A.Uberti Model 1851 Navy .36 Caliber Black Powder Revolver with 7.5" barrel. See attached photos for more detail. SER# 83034.



A. Uberti Model 1860 Army .44 Caliber Black Powder Revolver

Lot #247 (Sale Order 254 of 304)

A. Uberti Model 1860 Army .44 Caliber Black Powder Revolver with 8" barrel. See attached photos for more detail. SER# 44033.



Fabriques de Armes Leige Belgium 1860 New Model Colt Army .44 Cal Revolver

Lot #248 (Sale Order 255 of 304)

Fabriques de Armes Leige Belgium 1860 New Model Colt Army .44 Cal Pistol. This black powder .44 caliber revolver, was produced in Belgium as directed by William B. Edwards of Centennial Arms Corp of Chicago. This 1860/1960 new model army is a well executed replica of the 1860 Colt. Shows light use, remains in very good functional condition. See attached photos for more detail. SER# 2656.



EIG Navy .36 Caliber Black Powder Revolver

Lot #249 (Sale Order 256 of 304)

EIG Navy .36 Caliber Black Powder Revolver with 7.5" barrel, and hard wood case. See attached photos for more detail. SER# 29755.



EIG Navy .36 Caliber Black Powder Revolver

Lot #250 (Sale Order 257 of 304)

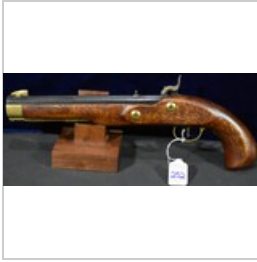
EIG Navy .36 Caliber Black Powder Revolver with 7.5" barrel, and hard wood case. See attached photos for more detail. SER# 29756.



Miroku Replica 1859 C. Sharps Pepperbox in .22LR

Lot #251 (Sale Order 258 of 304)

Miroku Replica 1859 C. Sharps Pepperbox in .22LR with 2.5" barrel. See attached photos for more details. SER# 1524.



Connecticut Valley Arms.45 Caliber Black Powder Pistol

Lot #252 (Sale Order 259 of 304)

Connecticut Valley Arms.45 Caliber Black Powder Pistol with 10" barrel. See attached photos for more detail. SER# 0076869.



32 Caliber Black Powder Revolver

Lot #253 (Sale Order 260 of 304)

32 Caliber Black Powder Revolver with 4.5" barrel. Includes case, extra cylinder, led balls, ball grease, powder horn, and tools. See attached photos for more details. SER# 59881.



ANTIQUE .59 Caliber Black Powder Side by Side Shotgun

Lot #254 (Sale Order 261 of 304)

ANTIQUE .59 Caliber Black Powder Side by Side Shotgun with 28.5" barrel. One hammer has been replaced, see last photo. See attached photos for more detail. No visible serial number.



ANTIQUE 12GA Bore Black Powder Weatherhead Walter and Co Muzzle Loader

Lot #255 (Sale Order 262 of 304)

ANTIQUE 12GA Black Powder Weatherhead Walter and Co Muzzle Loader with 32" barrel. Barrel measures aprox 18MM inner diameter equivalent to 12GA bore. Company began in 1875, located in Derby, England, this appears to be a 19th century muzzle loader. See attached photos for more detail. No visible serial number.



Pedersoli Italy .36 Caliber Flintlock Rifle

Lot #256 (Sale Order 263 of 304)

Pedersoli Italy .36 Caliber Flintlock Rifle with 39" octagon barrel. See attached photos for more detail. SER#66808.



Connecticut Valley Arms Inc. PlainsHunter .50 Caliber Muzzle Loader

Lot #257 (Sale Order 264 of 304)

Connecticut Valley Arms Inc. PlainsHunter .50 Caliber Muzzle Loader with 26" octagon barrel. See attached photos for more detail. SER# 60-13-007813-95.



Traditions INC. Whitetail R. 50 Caliber Muzzle Loader

Lot #258 (Sale Order 265 of 304)

Traditions INC. Whitetail R. 50 Caliber Muzzle Loader with 26" barrel. Comes with leather sling. See attached photos for more detail. SER# 258926.



Thompson Center Arms .45 Cal Muzzle Loader

Lot #259 (Sale Order 266 of 304)

Thompson Center Arms .45 Cal Muzzle Loader with 28" octagon barrel. See attached photos for more detail. SER# 112479.



Thompson Center Arms Renegade .54 Cal Muzzle Loader

Lot #260 (Sale Order 267 of 304)

Thompson Center Arms Renegade .54 Cal Muzzle Loader with 27" octagon barrel. See attached photos for more detail. SER# 320705.



InvestArms Hawken Rifle Model 120B .50 Caliber Muzzle Loader

Lot #261 (Sale Order 268 of 304)

InvestArms Hawken Rifle Model 120B .50 Caliber Muzzle Loader with 29" barrel. See attached photos for more detail. SER# 205491.



Hy Hunter Hollywood California Model 1863 .58 Caliber Muzzle Loader

Lot #262 (Sale Order 269 of 304)

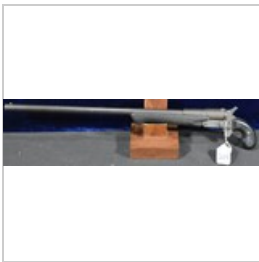
Hy Hunter Hollywood California Model 1863 .58 Caliber Muzzle Loader with 33" barrel. See attached photos for more detail. SER# HHH175.



Centaure Liege Belgium Blunderbuss

Lot #263 (Sale Order 270 of 304)

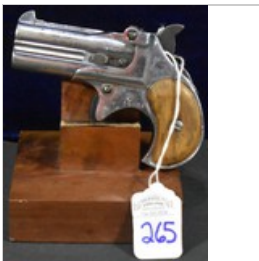
Centaure Liege Belgium Blunderbuss with 14" flared barrel. See attached photos for more detail. SER# 468.



FMJ SH .410GA Single Shot Pistol

Lot #264 (Sale Order 271 of 304)

FMJ SH .410GA Single Shot Pistol with 18.25" barrel. See attached photos for more detail. SER# B00001733.



Rohm RG-17 .38 Special Derringer

Lot #265 (Sale Order 272 of 304)

Rohm RG-17 .38 Special Deringer with 3" barrel. See attached photos for more detail. SER# 39184.



ANTIQUE Lot of Two Remington Derringers in .41 Rimfire

Lot #266 (Sale Order 273 of 304)

ANTIQUE Lot of Two Remington Derringers in .41 Rimfire with 3" barrels. Gun one has ivory like grips, and bears SN# 952. Gun two is non-funtional, does not bear serial number, and has broken left grip. See attached photos for more detail.



ANTIQUE Remington Elliot Ring Trigger Five Barrel Pepperbox in .22 Rimfire

Lot #267 (Sale Order 274 of 304)

ANTIQUE Remington Elliot Ring Trigger Five Barrel Pepperbox in .22 Rimfire with 3" barrel. Grips are replacements. See attached photos for more detail. SER# 5005.



ANTIQUE American Arms .32 Rimfire Double Barrel Derringer

Lot #268 (Sale Order 275 of 304)

ANTIQUE American Arms .32 Rimfire Double Barrel Derringer with 2.75" swivel barrel. See attached photos for more detail. SER# 5502.



ANTIQUE Remington Smoot New Model No. 1 Revolver in .30 Rimfire

Lot #269 (Sale Order 276 of 304)

ANTIQUE Remington Smoot New Model No. 1 Revolver in .30 Rimfire with 3" barrel. See attached photos for more detail. SER# 196.



ANTIQUE Manhattan F.A Mfg Co. .31 Caliber 3-Shot Rotating Barrel Barrel Precusion Pepperbox Pistol

Lot #270 (Sale Order 277 of 304)

ANTIQUE Manhattan F.A Mfg Co. .31 Caliber 3-Shot Rotating Barrel Barrel Precusion Pepperbox Pistol with 3" barrel. Barrel does not index and rotate, must be manually turned to next firing position, hammer mechanics funtions fine. See attached photos for more details. SER# 5.



ANTIQUE Ethan Allen .32 Caliber 6 Barrel Pepperbox

Lot #271 (Sale Order 278 of 304)

ANTIQUE Ethan Allen .32 Caliber 6 Barrel Pepperbox with 3.25" barrel. Action is firm, crisp, and fluted barrel indexes properly. Has standard Worcester style handle, wide flat barrel ribs, and engraved nipple shield. See attached photos for more details. No visible serial number.



ANTIQUEN Allen & Thurber D.A Bar Hammer Pistol in .28 Caliber

Lot #272 (Sale Order 279 of 304)

ANTIQUEN Allen & Thurber D.A Bar Hammer Pistol in .28 Caliber with 2" barrel. Missing trigger guard. Double action does not function properly. See attached photos for more detail. SER# 387.



Lot of Two ANTIQUE Pinfire Revolvers

Lot #273 (Sale Order 280 of 304)

Lot of Two ANTIQUE Pinfire Revolvers. Gun one is 11mm Pinfire, Spanish, has a 4.5" barrel, with collapsible trigger. Gun one cycles, but trigger doesn't fully reset. Gun two is 7mm Pinfire, Belgium, with E/LG/* Proof, Serial Number #8846. Gun two functions properly with crisp action. See attached photos for more details.



ANTIQUEN Belgian .22RF Parlour Pistol

Lot #274 (Sale Order 281 of 304)

ANTIQUEN Belgian .22RF Parlour Pistol with 7.5" barrel, chambered in .22 Rimfire. Underside of grip is marked "III" as well as underside of octagon barrel, to the side of serial number 007. Scroll work engraving on both sides of frame, and trigger guard. ELG in circle proof, and *T proofs on left side of octagon barrel. Case color is excellent, action is extremely crisp. A very fine example. See attached photos for more detail. SER# 007.



ANTIQUEN Smith & Wesson Model No. 1 2nd Issue .22SRF Revolver

Lot #275 (Sale Order 282 of 304)

ANTIQUEN Smith & Wesson Model No. 1 2nd Issue .22SRF Revolver with 3 3/16" octagon barrel, chambered in .22 Short Rim Fire. This second issue was manufactured from 1860-1868, features a 7 shot non-fluted cylinder, having rose wood grips, and squared butt shape. Company name and address on barrel, and cylinder has patent dates. See attached photos for more details. SER# 107356.



ANTIQUEN American Standard Tool 7 Shot .22 Cal Pocket Revolver

Lot #276 (Sale Order 283 of 304)

ANTIQUEN American Standard Tool 7 Shot .22 Cal Pocket Revolver with 3.25" barrel. This model is a near copy to the Smith & Wesson Model No. 1 Revolver, as seen in prior lot. See attached photos for more detail. SER# 33262.



ANTIQUE 1862-1891 Bacon Arms Gaurdian .32RF Revolver

Lot #277 (Sale Order 284 of 304)

ANTIQUE 1862-1891 Bacon Arms Gaurdian .32RF Revolver with 2.25" barrel. This is stamped Guardian on top of brass frame. See attached photos for more detail. SER# 2345.



ANTIQUE Single Shot Side Break Derringer .22 Cal Pistol

Lot #278 (Sale Order 285 of 304)

ANTIQUE Single Shot Side Break Derringer .22 Cal Pistol with 3.25" octagon barrel. Has brass frame and wood grips. See attached photos for more information. SER# 128.



Lot of Two ANTIQUE .32 Cal Revolvers

Lot #279 (Sale Order 286 of 304)

Lot of Two ANTIQUE .32 Cal Revolvers. Gun one is a Meridian Firearms Co Senator No. 2 .32 Caliber Revolver with 2.25" barrel. Gun two is a Hopkins & Allen Dictator .32 Cal Revolver with 2.75" barrel. See attached photos for more details. Gun 1 SER# 3277. Gun 2 SER# 3923.



Redwood Arms New Zealand Duck's Foot

Lot #280 (Sale Order 287 of 304)

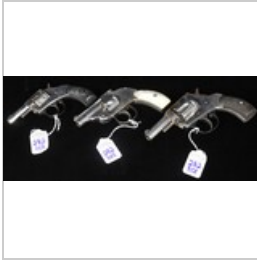
Redwood Arms New Zealand Duck's Foot. Brass frame, four 2.5" barrel, and wooden grips. See attached photos for more detail. SER# 255.



O.F. Mossberg Brownie .22 Cal Pistol

Lot #281 (Sale Order 288 of 304)

O.F. Mossberg Brownie .22 Cal Pistol with four 2.5" barrels. Barrel lock mechanism is soft/weak. See attached photos for more details. SER# 28092.



Lot of Three H&R Revolvers

Lot #282 (Sale Order 289 of 304)

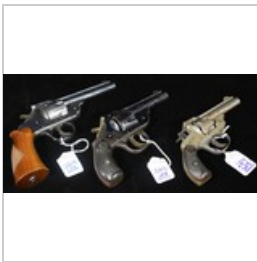
Lot of Three H&R Revolvers. Gun one is a Young American Double Action in .22 Rimfire, with a 2" barrel, and 7 shot capacity. Gun two has a 2" barrel, 5 shot capacity, and is chambered in 32 S&W. Gun three is The American Double Action chambered in .32 cal with a 2.5" barrel, and 6 shot capacity. See attached photos for more detail. Gun one SER#359255. Gun two SER# 100754. Gun three SER#1751.



Lot of Three H&R Revolvers

Lot #283 (Sale Order 290 of 304)

Lot of Three H&R Revolvers. Gun one is chambered in .22 Rimfire, has a 7 shot capacity, and has a 4" barrel. Gun two has a 3.25" barrel, 5 shot capacity, and is chambered in .38 caliber. Gun three cycles but the trigger does not fully reset. Gun three has a 6 shot capacity, is chambered in .32 caliber, and has a 3.25" barrel. Gun one SER# 344731. Gun two SER# 3750. Gun three SER# 585.



Lot of Three Revolvers

Lot #284 (Sale Order 291 of 304)

Lot of Three Revolvers. Gun one is a Iver Johnson DA32 Revolver chambered in .32 caliber, with a 6 shot capacity, and 4" barrel. Gun two is a Iver Johnson Top Break .38 S&W Revolver, with 5 shot capacity, and 3.25" barrel. Gun three does not cycle, as the trigger is stuck. Gun three is a Andrew Fryberg Top Break chambered in .32 Caliber, with a 5 shot capacity, and 3" barrel. See attached photos for more detail. Gun one SER# 73435. Gun two SER# 5386. Gun three SER# 3148.



DRGM Tell II DRP German Pre-Nazi .177 Cal Air Pistol

Lot #285 (Sale Order 292 of 304)

DRGM Tell II DRP German Pre-Nazi .177 Cal Air Pistol. This .177 air pistol functions properly, with great compression. See attached photos for more information.



WWI German Military M1894 Hebel Flare Pistol

Lot #286 (Sale Order 293 of 304)

WWI German Military M1894 Hebel Flare Pistol. This is an original flare/signal pistol, manufactured by L.B.J, and bears the correct Imperial German Arms acceptance proofs. These were used in WWI and WWII primarily to signal soldiers to leave the trenches and go over the top, and engage the allied forces. These were also used by German Airman to shoot at British Aircraft, and hydrogen filled balloons. Remains in very good condition, and has fully functioning, crisp action. ATTENTION ONLINE BUYERS FLARES WILL NOT BE SHIPPED AND ARE LOCAL PICKUP ONLY. See attached photos for more detail. SER# 11282.



Czech 26.5MM Signal Flare Pistol

Lot #287 (Sale Order 294 of 304)

Czech 26.5MM Signal Flare Pistol comes with holster. See attached photos for more detail and proof marks. ATTENTION ONLINE BUYERS FLARES WILL NOT BE SHIPPED AND ARE LOCAL PICKUP ONLY. SER# 15711.



A.H. Fox Gun Company VERY PISTOL 25MM MARK IV Signal Flare Pistol

Lot #288 (Sale Order 295 of 304)

A.H. Fox Gun Company VERY PISTOL 25MM MARK IV Signal Flare Pistol. Interior of barrel measures 1". This heavy brass, US Mark IV Flare pistol was used during the First World War, the original caliber was 25MM, but the bore has been arsenal enlarged to accept 1" or 26.5MM Flares. Comes in later holster. ATTENTION ONLINE BUYERS FLARES WILL NOT BE SHIPPED AND ARE LOCAL PICKUP ONLY. See attached photos for more detail. SER# 9-377.



Factory Sealed Box WINCHESTER 9mm Long Shot Cartridges

Lot #289 (Sale Order 296 of 304)

Un-Opened Vintage Box of 50 Winchester 9mm Long Shot Cartridges. Shrink Sealed to protect the condition of label and box.



Factory Metal Tin Western Germany 9mm Flobert Ammunition

Lot #290 (Sale Order 297 of 304)

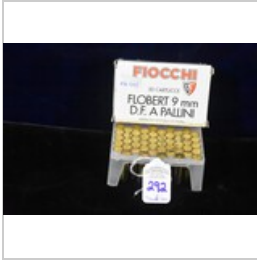
Vorm. Alfted Noble Co. Western Germany Metal Hinged Lid Tin containing 50 Factory Rounds Flobert Patronen 9mm Cartridges



Fiocchi Factory Box 9mm Flobert 6 Shot- 50 Cartridges

Lot #291 (Sale Order 298 of 304)

Fiocchi Factory Box 9mm Flobert 6 Shot- 50 Cartridges. Shrink Wrapped Sealed.



Fiocchi Facotry Box 9mm Flobert 6 Shot- 50 Cartridges

Lot #292 (Sale Order 299 of 304)

Fiocchi Facotry Box 9mm Flobert 6 Shot- 50 Cartridges. Box was opened to photograph.



Fiocchi Facotry Box 9mm Flobert 6 Shot- 50 Cartridges

Lot #293 (Sale Order 300 of 304)

Fiocchi Facotry Box 9mm Flobert 6 Shot- 50 Cartridges. Box was opened to photograph.



Fiocchi Facotry Box 9mm Flobert 8 Shot- 50 Cartridges

Lot #294 (Sale Order 301 of 304)

Fiocchi Facotry Box 9mm Flobert 8 Shot- 50 Cartridges. Shrink Wrapped Sealed.



Fiocchi Facotry Box 9mm Long Shot Flobert 9 Shot- 50 Cartridges

Lot #295 (Sale Order 302 of 304)

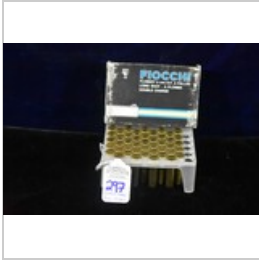
Fiocchi Facotry Box 9mm Long Shot Flobert 9 Shot- 50 Cartridges- Box was opened to photograph.



Fiocchi Facotry Box 9mm Long Shot Double Charge Flobert 8 Shot- 50 Cartridges

Lot #296 (Sale Order 303 of 304)

Fiocchi Facotry Box 9mm Long Shot Double Charge Flobert 8 Shot- 50 CartridgesBox was opened to photograph.



Focchi Facotry Box 9mm Long Shot Double Charge Flobert 8 Shot- 45 Cartridges

Lot #297 (Sale Order 304 of 304)

Focchi Facotry Box 9mm Long Shot Double Charge Flobert 8 Shot-45 Cartridges- Box was opened to photograph and is missing 5 of the original 50 rounds.