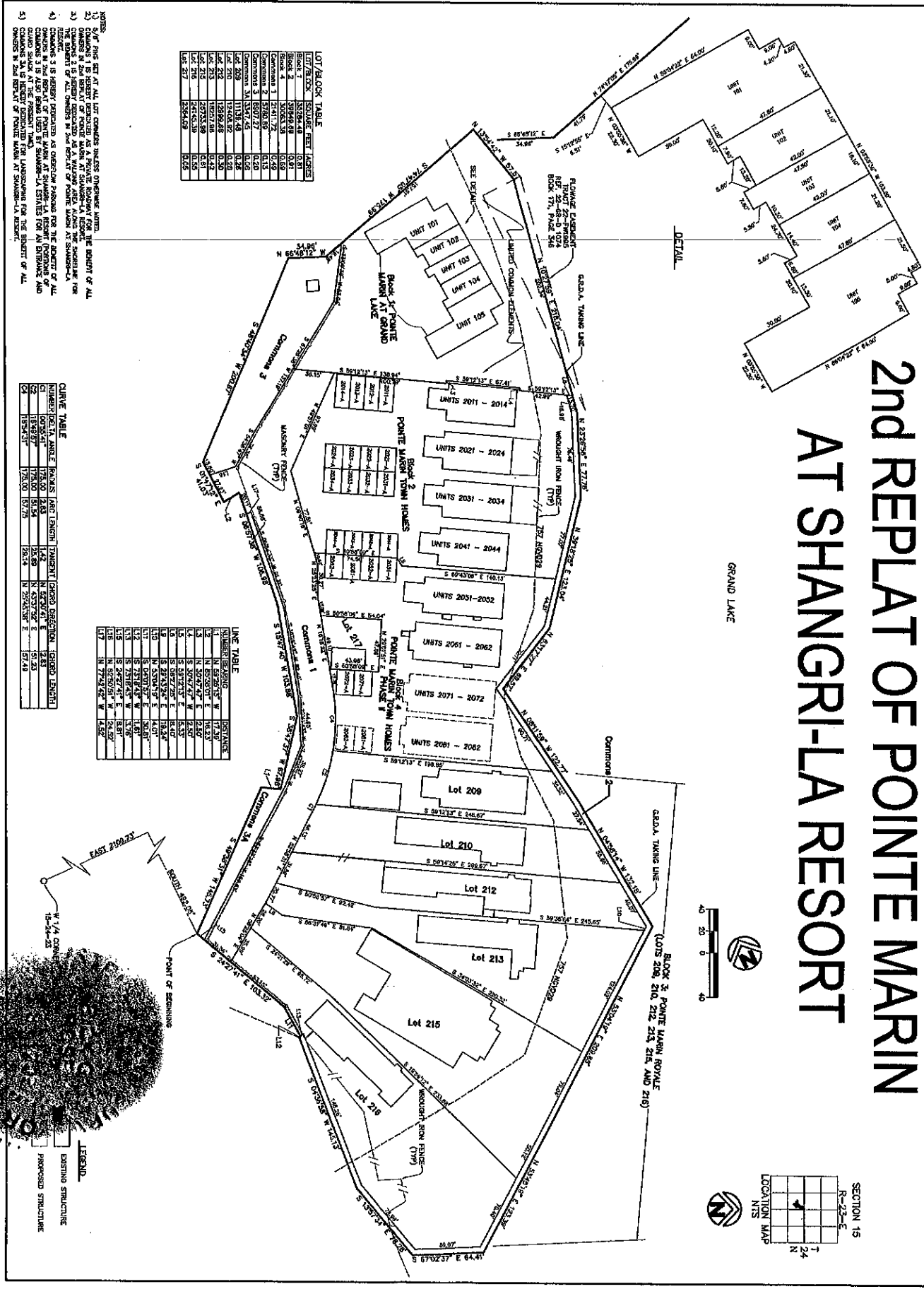




# 2nd REPLAT OF POINTE MARIN AT SHANGRI-LA RESORT



**LOT/BLOCK TABLE**

LOT/BLOCK	ACRES	SQ. FEET	ADDRESS
Block 1	0.381	16,460	Pointe Marin Town Homes
Block 2	0.381	16,460	Pointe Marin Town Homes
Block 3	0.381	16,460	Pointe Marin Town Homes
Block 4	0.381	16,460	Pointe Marin Town Homes
Common 1	0.249	10,750	
Common 2	0.13	5,700	
Common 3	0.13	5,700	
Common 4	0.13	5,700	
Lot 209	0.29	12,500	
Lot 210	0.29	12,500	
Lot 212	0.30	13,000	
Lot 213	0.30	13,000	
Lot 215	0.30	13,000	
Lot 216	0.30	13,000	
Lot 218	0.35	15,200	
Lot 219	0.35	15,200	
Lot 220	0.35	15,200	
Lot 221	0.35	15,200	
Lot 222	0.35	15,200	
Lot 223	0.35	15,200	

**CURVE TABLE**

CURVE DATA	ANGLE	POINT	CHORD	DIRECTION	CHORD LENGTH
1	115.5437°	175.00'	18.74'	N 35.2478° E	51.23
2	115.5437°	175.00'	18.74'	N 35.2478° E	51.23
3	115.5437°	175.00'	18.74'	N 35.2478° E	51.23

**LINE TABLE**

LINE	BEARING	LENGTH	START POINT	END POINT	DISTANCE
1	N 85.9267° E	17.36'	1	2	17.36
2	N 85.9267° W	17.36'	2	1	17.36
3	S 85.9267° E	17.36'	3	4	17.36
4	S 85.9267° W	17.36'	4	3	17.36
5	N 85.9267° E	17.36'	5	6	17.36
6	N 85.9267° W	17.36'	6	5	17.36
7	S 85.9267° E	17.36'	7	8	17.36
8	S 85.9267° W	17.36'	8	7	17.36
9	N 85.9267° E	17.36'	9	10	17.36
10	N 85.9267° W	17.36'	10	9	17.36
11	S 85.9267° E	17.36'	11	12	17.36
12	S 85.9267° W	17.36'	12	11	17.36
13	N 85.9267° E	17.36'	13	14	17.36
14	N 85.9267° W	17.36'	14	13	17.36
15	S 85.9267° E	17.36'	15	16	17.36
16	S 85.9267° W	17.36'	16	15	17.36
17	N 85.9267° E	17.36'	17	18	17.36
18	N 85.9267° W	17.36'	18	17	17.36
19	S 85.9267° E	17.36'	19	20	17.36
20	S 85.9267° W	17.36'	20	19	17.36
21	N 85.9267° E	17.36'	21	22	17.36
22	N 85.9267° W	17.36'	22	21	17.36
23	S 85.9267° E	17.36'	23	24	17.36
24	S 85.9267° W	17.36'	24	23	17.36
25	N 85.9267° E	17.36'	25	26	17.36
26	N 85.9267° W	17.36'	26	25	17.36
27	S 85.9267° E	17.36'	27	28	17.36
28	S 85.9267° W	17.36'	28	27	17.36
29	N 85.9267° E	17.36'	29	30	17.36
30	N 85.9267° W	17.36'	30	29	17.36



2nd REPLAT  
OF  
**POINTE MARIN**  
AT  
SHANGRI-LA RESORT

**Rose & McCrary, P.C.**  
 2125 South Broadway, Grove, OK 74344  
 918.786.6350 FAX: 918.766.7590 www.roseandmccrary.com

Engineering & Land Surveying

SECTION 15  
 R-23-E  
 T-24-N  
 LOCATION MAP

Drawn by	T.HOPKINS
Checked by	ROSE
Date	DECEMBER 2011

Lot Number	11-401-00
Control Feature	ROSE
Scale Number	2 OF 2