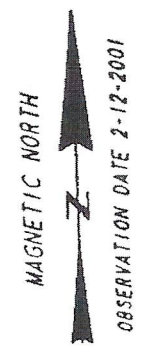


- (A) - JUDY AND FREDDIE CRICK DB 350 PG 213 & DB 354 PG 513.
- (B) - BOBBY JONES DB 350 PG 215 & DB 354 PG 517.
- (C) - JUDY AND FREDDIE CRICK DB 361 PG 514.
- (D) - ROBERT AND MADGE SPEARS DB 305 PG 705.
- (E) - RALPH AND SHIRLEY RUSSO DB 363 PG 178.
- (F) - DOUGLAS AND JANE SUMNER DB 297 PG 59.



SCALE: 1" = 200'

AMAX COAL CO.
DEED NOT FOUND

RONNIE BRIGGS
DB 435 PG 694

HENRY O BANNON
DB 336 PG 179

51.90 AC.

LINE	BEARING	DISTANCE
L 1	S 68° 05' 59" E	35.85
L 2	S 23° 44' 38" W	116.00
L 3	S 66° 46' 42" E	35.13
L 4	N 52° 00' 26" W	127.36

NOTE
THE PROPERTY SHOWN HEREON IS
SUBJECT TO ALL LEGAL EASEMENTS,
PRESCRIPTIVE RIGHTS, AND RIGHT OF
WAYS.

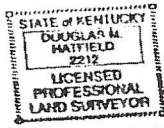
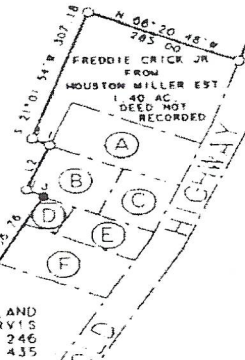
- LEGEND**
- - 3/4" SHAPED IRON PIN WITH STAINLESS STEEL CAP STAMPED "PROPERTY LINE DO NOT DISTURB #2212" (SET THIS SURVEY)
 - - IRON PIN FOUND STAMPED "303"

SURVEYOR'S CERTIFICATION

I DO HEREBY CERTIFY THAT THE SURVEY SHOWN HEREON WAS PERFORMED UNDER MY DIRECTION BY THE METHOD OF RANDOM TRAVERSE THE UNADJUSTED MATHEMATICAL ERROR OF CLOSURE RATIO OF THE RANDOM TRAVERSE EXCEEDS 1/1000 AND THAT THE BEARINGS AND DISTANCES SHOWN HEREON HAVE NOT BEEN ADJUSTED FOR CLOSURE THE BASIS OF THE BEARINGS SHOWN HEREON WAS A MAGNETIC READING TAKEN IN THE FIELD ALONG A RANDOM TRAVERSE LINE NEAR THE SOUTH PROPERTY LINE SHOWN HEREON THE SURVEY SHOWN HEREON IS A CLASS "B" SURVEY THE ACCURACY AND PRECISION OF SAME MEET ALL THE SPECIFICATION OF THIS CLASS.

Douglas Hatfield 2-27-01
DOUGLAS HATFIELD FLS #2212 DATE

HILDA CULBERSON
DB 440 PG 354



SURVEY AND PLAT BY

DOUGLAS HATFIELD
PROFESSIONAL LAND SURVEYOR

400 TERREBONE LOOP
GREENVILLE, KENTUCKY 42345

PHONE: (270) 338-6700

DRAWN BY: DMH CHECKED BY: DMH
DATE: 02-12-2001 FILE: MILLERAZ

DOCUMENT NO: 105662
RECORDED ON: JUNE 08, 2001 05:16:28PM
TOTAL FEES: \$30.00
TRANSFER TAX: \$100.00
COUNTY CLERK: GAYLAN SPURLIN
COUNTY: BOWLING GREEN COUNTY
DEPUTY CLERK: KATHY SADDLER