

PUBLIC AUCTION



Company Closing

COWETA MACHINE & FABRICATION, INC.

83 Amlajack Way, Newnan, Georgia 30265

WEBCAST AUCTION, NO ON-SITE BIDDING

TUESDAY, MAY 24TH AT 10AM ET

Inspection: Day Prior to Auction from 9AM-4PM



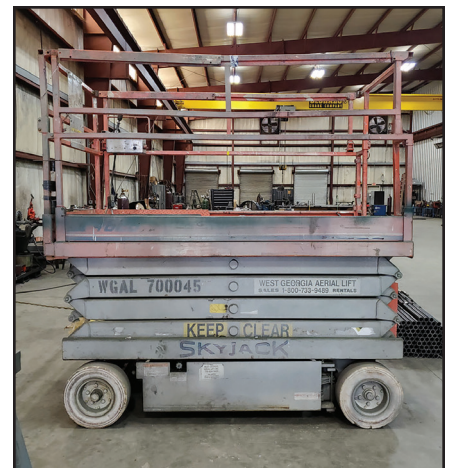
P.O. Box 369 | Ross, Ohio 45061
Phone: 513/738-3311 | Fax: 513/738-0221
www.MyronBowling.com

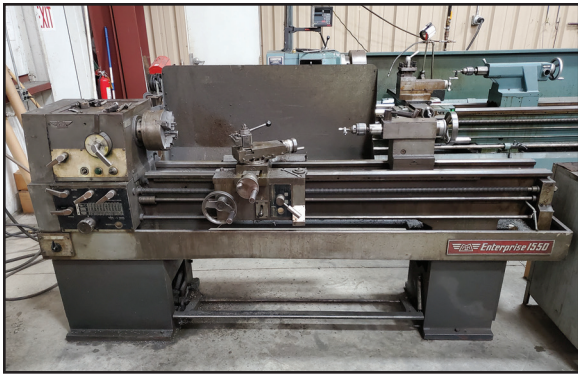


Asset Sales, Inc.
auctioneers * appraisers * liquidators

163 Associates Lane | Indian Trail, NC 28079
Phone: 704/821-4315 | Fax: 704/821-4325
www.Asset-Sales.com | info@Asset-Sales.com

45' BLAST & PAINT BOOTHS





CNC EQUIPMENT

2017 AMADA 220-Ton x 14' Hyd. CNC Press Brake, Model HG2204, S/N 22048794, Amnc 3i CNC Control, Agrip-M Die Clamps, Multi-Axis CNC & Backgauge
2012 HAAS VF6/50 CNC Vertical Machining Center, S/N 1098155, 30-Station ATC, HAAS CNC Control, Tool Probe, 162" x 71" Table with Thru Spindle Coolant
2005 JOHNFORD SL-650+65 CNC Lathe w/Milling, S/N TE05009, Fanuc Series Oi-TC CNC Control, 12-Station Turret, Chip Conveyor, 10" 3-Jaw Chuck

FABRICATING

PRIMELINE 220-Ton x 12' Hyd. Press Brake, Model HAP3720, S/N 706296, Elgo 2-Axis Control • (3) Racks of Press Brakes Dies up to 12'
(2) ROUSSELLE No. 3 25-Ton OBI Punch Presses, 2" Stroke, 10-3/4" Shut Height, 2" Stroke Adj., 135 SPM
GMS 120" x 1/2" Hyd. Shear, Model GMV 3013, Backgauge, Audemi PGP 401 DRO, Footswitch, S/N G1800
W.A. WHITNEY 50-Ton Hyd. Punch, Model Mesa 96" x 57", Dual Footswitch
CENTRAL MACHINERY 16/14-Ga. English Wheel Kit w/Stand, 16-Ga. Sheet Metal, 14-Ga. Aluminum/Copper Capacity
HOSSFELD Universal Iron Bender
TRW Series 5000 Stud Welder, Model 201
MILLER Spot Welder
HYPER THERM Powermax 1000 Plasma Cutter, G3 Series
(10+/-) MILLER, LINCOLN & DIAL-ARC MIG & TIG Welders, some w/Wire Feeders
(2) MILLER Wire Feeders on Carts
THERMAL-ARC Suitcase Plasma Cutter
Acetylene Torch Carts • Steel Welding Tables • 14' x 142" HD Steel Layout Table • Welding Curtains

ENGINE LATHES

2017 KINGSTON 160" Gap Bed Engine Lathe, Model HD261160, 4" Bar Through

Spindle, S/N CH17803, 16" 3-Jaw Chuck, Tailstock, Cross Slide, Tool Post, Steady Rest, Coolant Wash, Newal DP700 2-Axis DRO
LEBLOND Engine Lathe, 120" Bed, 24" 4-Jaw Chuck, 2 1/4" Bar Through Spindle, Tailstock, Cross Slide, Tool Post
1952 VDF Engine Lathe, 108" Gap Bed, Tailstock, Cross Slide, Tool Post, Steady Rest, 12" 3-Jaw Chuck
MK Enterprise 1550 Engine Lathe, 78" Bed, 8" 4-Jaw Chuck, 1-5/8" Bar Through Spindle, Tailstock, Cross Slide, Tool Post, Foot Kick

MILLS

BRIDGEPORT Series I 2-HP Vertical Knee Mill, Acu-Rite 2-Axis DRO, 48" x 9" Servo Power Table
BRIDGEPORT Vertical Knee Mill, Acu-Rite 2-Axis DRO, 48" x 9" Servo Power Table

TOOLROOM

(2) HYD-MECH S23A Hyd. Automatic Horizontal Band Saws, Evolution TS-50 Operator Station, Dual Hyd. Material Clamps, Variable Speed Rate & Force, New 2020 & 2005
DELTA Horizontal Band Saw
SELECT Radial Arm Drill, Model 288RD, 8" Column, 36" Arm, 25" x 35" Bed, 19-1/2" x 15-1/2" x 15" Machine Angle Block
THOMPSON Hyd. Hand Feed Surface Grinder, 24" x 12" PMC
KR WILSON 50-Ton H-Frame Hydraulic Press, Model 37E
MSC RF-40 Geared Head Milling & Drilling Machine, 29" x 8-1/4" Table, 6" Machine Vise, 1-HP
BRIDGEPORT Vertical Mill, Power Draw Bar, 48" x 9" Table
PHASE II 3-Ton Arbor Press, 6-1/2" Throat
RIDGID 300-T2 Pipe Threader, Extra Head & Dies
DUMORE Tool Post Grinder
DRILL DOCTOR Point Sharpener
ENGELBERG 4" Belt Sander • Pedestal & Bench Grinders • Combination Belt/Disc Grinder

Rotary Machining Table

#50 Morris Taper Tool Holders • Selection of Collets - R3, R5, Spring Collets, Collet Wrenches • Spare 3 & 4-Jaw Chucks • Machine Angle Blocks • Spindle Index • 90° Milling Head • 5C Collet Fixture • Sign Plate • Radius/Angle Dresser • Hydraulic & Collet Chucks • Large Face Mills • (5+) 6" & 8" Precision Machine Vises • Lathe Live Tooling & Centers • Boring Bars
Inspection Equipment - Height Stands, Pin/Block Gage Sets, Micrometers & Sets, Digital Caliper, 123 Blocks & More
Racks, Cabinet & Indexes of Perishable Tooling - Reamers, Straight/Taper Shank Drills, Mill Cutters, End Mills, Carbide Drill Bit & Inserts
Modular Tool Cabinets w/Dies, Holders & Punch Support, Assorted Support & Tooling

AIR COMPRESSORS

2006 KAESER CSD-75 75-HP Air Compressor, Sigma DRO
2006 KAESER Sigma SM-15 15-HP Air Compressor, DRO
KAESER TE-91 Air Dryer
250-Gallon Vertical Air Accumulator Tank

FORKLIFTS

DAEWOO 5,300-lb. LP Forklift, 188" Lift Height, 82" 3-Stage Mast, Sideshift, Fork Rack, 5,141 Hours
TOYOTA 4,500-lb. LP Forklift, Model 5FGC25, 130" Lift Height, 82-1/2" 2-Stage Mast, Solid Tires, Sideshift, Fork Positioner, Fork Rack
6' Fork Extensions

MATERIAL HANDLING

SKY-JACK II 4626 Electric Scissor Lift, Extended Platform, 24V, 46' Platform Height, Solid Non-Marking Tires, 500-lb. Platform Capacity
Hydraulic Pallet Jacks
Self-Dumping Trash Hoppers
Rigging Equipment - Chains, Lifting Straps, Sling, Clevises, Hooks, Shackles & More

TRUCKS & TRAILERS

FORD F-350 Super Duty Dually Extended Cab Truck, Power Stroke Diesel V-8 Engine, Automatic
CHEVROLET 1500 Silverado Extended Cab Pickup Truck, 2-Wheel Drive, Vinyl Leather Interior, Automatic
32' T/A Gooseneck T/A Trailer, Wood Deck
20' T/A Trailer, 18' Mesh Deck

MISCELLANEOUS

15'W x 45'L x 12'H Grit Blast Booth, Empire Elevator w/Reclaim System & 400-Gallon Vertical Air Tank
15'W x 45'L x 12'H Paint Booth, Filters, Lighted, Front Barn Door Style
Paint Pots
MULTIFORM Mefcatd Electromatic Heat Treat Furnace, S/N 265
TPI INDUSTRIAL EVAP-36 Fan Chiller
EMPIRE Dust Collector, Model HDFT2-8, 7.5-HP
CHATILLON 20,000 x 10-lb. Digital Crane Scale
(5) Magnetic Base Drills
Hydraulic Knock-Out Sets
Energacs & Assorted HPU Pieces
Sections of Assorted Treadrop Pallet Racking
Flammable Storage Cabinets
Banding Carts
Material Transfer Carts
Power, Cordless & Pneumatic Tools
Rack & Rotating Hardware Bin Full of Hardware
Pipe Extension Stands
Steel Sawhorses
Racks & Shelves of Solid Round Stock
Steel, Steel Round/Square Tubes, Channels, Aluminum & Sheet Stock
Office Furniture & Equipment

Visit MyronBowling.com for more details

WEBCAST ONLY - NO ON-SITE BIDDING



CNC, TOOLROOM & FABRICATING EQUIPMENT



Company Closing

COWETA MACHINE & FABRICATION, INC.

83 Amlajack Way, Newnan, Georgia

TUESDAY, MAY 24TH
Starting at 10AM ET

Inspection: Day Prior to Auction from 9AM-4PM



ALWAYS AVAILABLE TO HELP WITH YOUR AUCTION.

Prior to the Sale Date,
Register at
BidSpotter.com

SCAN
HERE
TO SEE
MORE



Myron Bowling	Joe Oliver 513/604-4958 Joe@MyronBowling.com	Kevin Gamm 513/235-6430 Kevin@MyronBowling.com	Greg Hengehold 513/520-7636 Greg@MyronBowling.com	Christopher Lee 513/720-1687 Christopher@MyronBowling.com	Tom Bowling 513/738-3311 Tom@MyronBowling.com
---------------	--	--	---	---	---

COMPLETE TERMS & CONDITIONS can be found at MyronBowling.com, or call 513-738-3311 if you have questions. Buyer's Premium 18% ONLINE w/BidSpotter.com.

REMOVAL & PAYMENT: Machinery removal is the responsibility of the buyer. All equipment must be removed in accordance with the specific auction timeline and terms of sale. See the specific auction web page for details

Additional terms may be announced during the auction. We make every effort to accurately describe each item in the auction; however, a mistake may occur. Buyers must take responsibility to thoroughly inspect the items on which they intend to bid. Each item will be sold "As is, where is." There is absolutely no warranty or guarantee of any kind either written or implied. Occasionally, additional information may come to light regarding any and all items being sold during the auction. When this occurs the new information takes precedence.

AUCTION LICENSE NUMBERS: Thomas Curtis Bowling, GA Auction Lic # AU004530



P.O. Box 369 | Ross, Ohio 45061
Phone: 513/738-3311 | Fax: 513/738-0221
www.MyronBowling.com



Asset Sales, Inc.
auctioneers * appraisers * liquidators

163 Associates Lane | Indian Trail, NC 28079
Phone: 704/821-4315 | Fax: 704/821-4325
www.Asset-Sales.com | info@Asset-Sales.com