

LIVE WEBCAST AUCTION

OWNER RETIRING

STICKER CORP. REIGHART STEEL PRODUCTS

37877 Elm Street – Willoughby (Cleveland), OH 44094

SALE DATE: WEDNESDAY, AUGUST 14TH STARTING AT 10:00AM

INSPECTION: Day prior to Auction Date or by appointment with jeffjr@cia-industrial.com



55" x 63" Rotary Table

4.75" Wotan Cutmax 2 Rotary Table Type CNC HBM



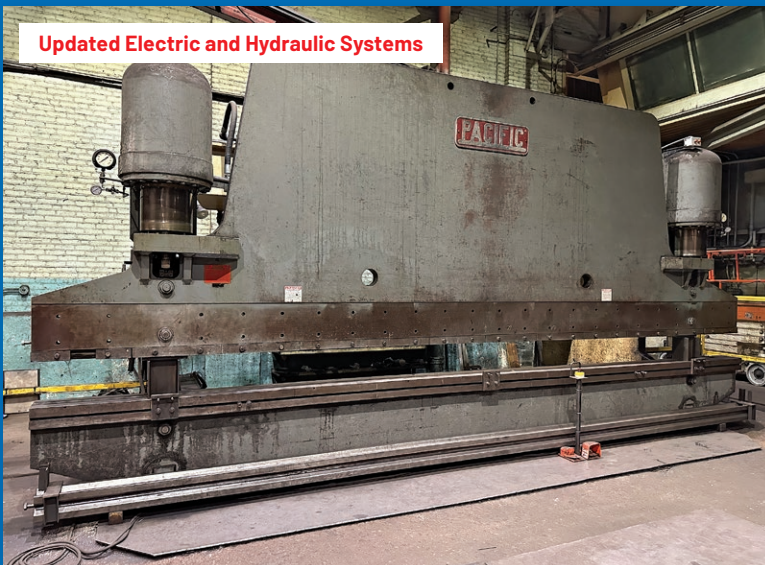
Large Heavy Plate and Storage Rack



New Control, Power Supply, Torch

UPGRADED
2023

CSI 10' x 25' CNC Plasma Table



Updated Electric and Hydraulic Systems

600 Ton x 24' Pacific Hydraulic Press Brake



(15) Miller Welders to 650-Amp

STICKER CORP. REIGHART STEEL PRODUCTS



49" x 63" Rotary Table

5" Olympia HT100x60 Rotary Table Type CNC HBM



Angle Plates to 2' x 8'



Toolholders Including Gerardi Right Angle Head



UPGRADED 2023

New Control, Power Supply, Torch

CSI 10' x 25' CNC Plasma Table, Upgraded 2023 at Cost of \$150K



88 Ton Piranha PII-88 Hydraulic Ironworker



Large Heavy Plate and Storage Rack



Heavy Press Brake Dies



239" Adjustable Channel Die



24' x 6.5" x 6.5" Four-Way Die

WEDNESDAY, AUGUST 14TH - 10:00AM

CNC BORING MILLS AND ACCESSORIES

- 5' Olympia HT100x60 Rotary Table Type CNC HBM, 49" x 63" Rotary
- 4.75' Wotan Cutmax 2 Rotary Table Type CNC HBM, 55" x 63" Rotary
- 4" Giddings and Lewis CNC Table Type, Fanuc, Updated Electric, 48" x 74" Table
- Gerardi G90 Right Angle Head and Accessories
- (10) Sets of Angle Plates 24" x 96"
- (250) No. 50 Taper Tool Holders
- Rotary Tables, Sub Tables
- Hold Down and Set-Up Equipment, Vises, Magnetic Chuck, Accessories

PRESS BRAKE AND BURNING TABLE

- 600 Ton x 24' Pacific Hydraulic Press Brake, Updated Electric and Hydraulic Systems
- Heavy Press Brake Dies Including 24' x 6.5" x 6.5" Four-Way and 239" Channel Die
- CSI 10' x 25' CNC Plasma Table, Upgraded 2023 at Cost of \$150K, Hypertherm Pro-Max 200 Power Supply, Torch, Edge Connect Control, Servo

FABRICATING MACHINERY

- Bentec BT-2000 Horizontal Hydraulic Ram Bender, Tooling
- 1/2" x 6' Webb 7L Plate Bending Roll
- 88 Ton Piranha PII-88 Hydraulic Ironworker, Accessories
- 16" x 27" HEM P120HA Automatic Horizontal Band Saw
- Misc. Fabricating, Saws, Pullmax Bevellers, Mag Base Drills

WELDING EQUIPMENT

- (15) Miller Welders to 650-Amp, Some Late Model
- Stud Welder, Arc Welders, Plasma Cutter
- Welding Positioners to 15,000 Lb.
- Turning Rolls, Heavy Weld Tables, Heavy Horses
- Grinders, Fume Collectors, Clamps

HEAVY PLATE INVENTORY

- Large Heavy Plate and Storage Rack, Sizes to 8' x 20', See pics on website, no inventory listing available
- Heavy Steel Floor Plates Throughout Plant

CNC TURNING CENTER, TOOLROOM, TRUCKS, FORKLIFTS, SCISSOR LIFT

- Mori Seiki SL-400B/800 CNC Turning Center
- LPG Forklifts to 10,000 Lb.
- Lathes, Mills, Drills, Grinders, Tooling and Accessories
- 2006 Ford F550 Flat Bed, Power Stroke Diesel
- Ford 24' Flat Bed Truck
- 12' x 24' x 12' H Binks Drive-In Paint Booth
- Hoppers, Lifting Chains, Plate Grabbers
- Inspection Tools, Shop and Support Equipment

REAL ESTATE FOR SALE - (2) PROPERTIES

- 37,764+/- Sq. Ft. Heavy Manufacturing Building
- High-Bay Addition with 25-Ton Crane done in 2020
- 15,674+/- Sq. Ft. Manufacturing and Office Building
- Manufacturing Space: 11,750+/- Sq. Ft. Office Space: 3,924 Sq. Ft.

Contact Global Real Estate Advisors,
David Sigg, CCIM Broker,
Call/Text 440-668-3300



Mori Seiki SL-400B/800 CNC Turning Center



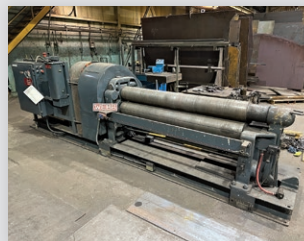
4" G&L CNC Boring Mill



LPG Forklifts to 10,000 Lb.



2006 Ford F550 Flat Bed



1/2" x 6' Webb Plate Roll



HEM Auto Band Saw



Bentec BT-2000 Ram Bender



Webb Turning Rolls



Positioners to 15,000 Lb.



Miller Welding Power Supplies



Support Equipment for Heavy Fabricating and Machining Plant

— LIVE WEBCAST —
AUCTION

OWNER RETIRING

STICKER CORP. REIGHART STEEL PRODUCTS

37877 Elm Street – Willoughby (Cleveland), OH 44094

**SALE DATE: WEDNESDAY, AUGUST 14TH
 STARTING AT 10:00AM**

INSPECTION: Day prior to Auction Date or
 by appointment with jeffjr@cia-industrial.com



CIA-INDUSTRIAL.COM
 2020 DUNLAP ST.
 CINCINNATI, OH 45214
 513.241.9701



24' Press Brake



CNC Boring Mills



Heavy Steel Plate



Welding Equipment

FIRST CLASS MAIL!

PRE-SORT
 FIRST CLASS
 U.S. POSTAGE
PAID
 CINCINNATI, OHIO
 PERMIT NO. 3593



Important Mail

TO BE DIRECTED TO THE ATTENTION OF EXECUTIVE PERSONNEL

• SALE DATE: WEDNESDAY, AUGUST 14TH STARTING AT 10:00AM •

LIVE WEBCAST AUCTION

OWNER RETIRING

STICKER CORP. REIGHART STEEL PRODUCTS

37877 Elm Street – Willoughby (Cleveland), OH 44094

IMPORTANT NOTICE:

Although information has been obtained from sources deemed reliable, the auctioneer makes no warranty or guarantee, expressed or implied, as to the accuracy of the information herein contained. It is for this reason that buyers should avail themselves of the opportunity to make inspection prior to the sale. This brochure is intended to provide general information of the equipment being offered and is subject to errors, omissions, additions or deletions. Please check with the Auctioneer's Office for a final listing. Items offered may or may not necessarily be sold as described and/or photographed in this brochure.

AUCTIONEERS:

**Cincinnati Industrial Auctioneers, Inc. –
 License No. 63-1983-10439**
Jeffrey L. Luggen – License No. 57-1983-33789
Joseph M. Luggen – License No. 2010-0000-19

ASSOCIATIONS:



TERMS OF SALE:

All equipment described herein will be sold "as is", "where is" to the highest bidder or bidders for cash in accordance with our Terms & Conditions. A deposit may be required to bid. All sales are subject to state and/or local taxes unless a signed exemption form is presented at the time of purchase. All sales are final and balance is due within 24 hours of the auction. All bidders must comply with our Terms & Conditions to participate in the auction, which is available on www.cia-industrial.com.

18% BUYERS PERMIUM IN EFFECT FOR ALL PURCHASES

BIDDER INSTRUCTIONS:

All bidders must register for this auction at: www.bidspotter.com.
 Please register 24-hours in advance to get through the approval process.



CIA-INDUSTRIAL.COM
 2020 DUNLAP ST., CINCINNATI, OH 45214
 513.241.9701