

2 COURT AUCTIONS



1ST SALE SATURDAY JUNE 19TH 10:00 A.M.



191 JADE DRIVE, ELIZABETHTON, TN 2 BR 1 BA HOUSE, BARN, AND 2.819 ACRES

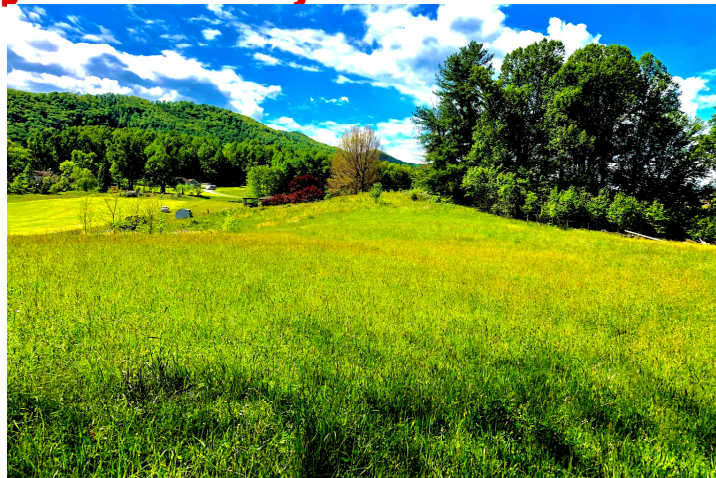
DIRECTIONS: From Elizabethton take Hwy 19E towards Hampton. Turn left onto the second Siam Rd. Follow past Beck Mountain Church and turn right onto Log Cabin Lane. Home is on the corner of Jade Drive and Log Cabin Lane. Follow Signs.

REAL ESTATE: Investor potential with this 2 bedroom 1 bath one level home in Elizabethton. This home has tons of potential, but needs SOME UPDATING. Features 1,044 finished square feet boasting a living room, kitchen/dining room, an office space, a mud room, CH&A, newer roof and updated windows, large barn, pavilion, and outbuilding. All this situated on 2.819 beautiful acres with long range views! Don't miss this sale! Visit www.birchfieldauctions.com, www.auctionzip.com, or our facebook page for more photos.

TERMS: Real Estate: 10% Down day of sale by cash or good check. Balance due in cash 30 days from court confirmation. Sale is subject to Chancery Court Confirmation Case #31056

Lead based paint may exist. Any person has the right to inspect the building 10 days prior to the auction. A waiver must be signed at day of sale.

2ND SALE SATURDAY JUNE 19TH, 11:30 A.M.



TBD WILBUR DAM ROAD/BEE CLIFF RD, ELIZABETHTON, TN

DIRECTIONS: From 19E take highway 91 towards Stoney Creek and turn right onto Blue Springs Rd. Stay Straight onto Steelbridge Rd and follow across the river and continue towards the Dam. Property is on the left just past Bee Cliff Cabins. 447 Wilbur Dam Road will get you there by GPS. The rear lot is accessed from a 14 foot ROW off of Bee Cliff Road. See signs.

REAL ESTATE: Two beautiful building lots close to the Watauga River and the Lake! Tract 1 is 1.805 acres and would make a perfect lot for a cabin or home. Tract 2 fronts on Wilbur Dam Rd and features 1.201 acres of level land just waiting for your new home! Lots like this rarely come available in the Siam community. Don't miss your chance to own them!

TERMS: Real Estate: 10% Down day of sale by cash or good check. Balance due in cash 30 days from court approval. Sale is subject to Chancery Court Confirmation Case #31056 Lots will be sold individually and as a whole.

ANNOUNCEMENTS MADE DAY OF SALE TAKE PRECEDENCE OVER ALL OTHERS



**RANDALL
BIRCHFIELD
REAL ESTATE & AUCTION**

501 East E Street • Elizabethton, TN 37643

JASON BLEVINS • OWNER

AUCTIONEER TN LIC #6030

VA LIC #2907004003

(423) 543-5959

TFL 2458

ASHLEY BLEVINS

APPRENTICE AUCTIONEER

TN LIC. #6029

www.birchfieldauctions.com

