



**CUSTOM BRICK HOME • 8.73+/- ACRES**

# *Absolute Auction*

**SATURDAY • MARCH 9, 10 AM**



**1205 Model Farm Rd.  
Jamestown, TN**

**OPEN HOUSE  
Thur. Feb 28, 4-6 PM**



**A QUALITY, CUSTOM HOME WITH ACREAGE IN A GREAT LOCATION!**

This custom brick home features 3 bedrooms 2 bathrooms and approximately 3,000 sqft of living area. The main level offers a large living room boasting a brick fireplace, formal dining room, parlor, large bedrooms (master suite), extra closets, 2 car garage as well as a huge sunroom along the rear of the home. The kitchen opens to the living room, has lots of cabinet space, appliances and a bar. The ceiling heights vary throughout from 9' to 12' with some being vaulted. The home also features a full drive out basement. It is partially finished with an office area and 4th bedroom. The remainder is unfinished garage area and storage space. Other improvements include a detached garage and 14' x 20' shed. The shed could easily be converted to stables or altered to suit other livestock needs. The majority of the land is wooded; however, it has an open field to the rear of the property and access to head waters of a large pond. This would be a great area for a horse or smaller livestock.

**For More Details visit [www.eagleauctions.com](http://www.eagleauctions.com)**

**LEE J. AMONETT • BROKER/AUCTIONEER • (931) 252-1907**

Terms: 10% Buyers Premium. 15% deposit with balance due on/before 30 days. Property sells "As Is, Where Is" with no warranties. Complete Terms on website. *Announcements made day of sale take precedence over advertising!*



**AMONETT'S EAGLE  
AUCTION & REALTY, LLC**

117 S. Jefferson Ave., Cookeville, TN 38501  
**931-526-5335**

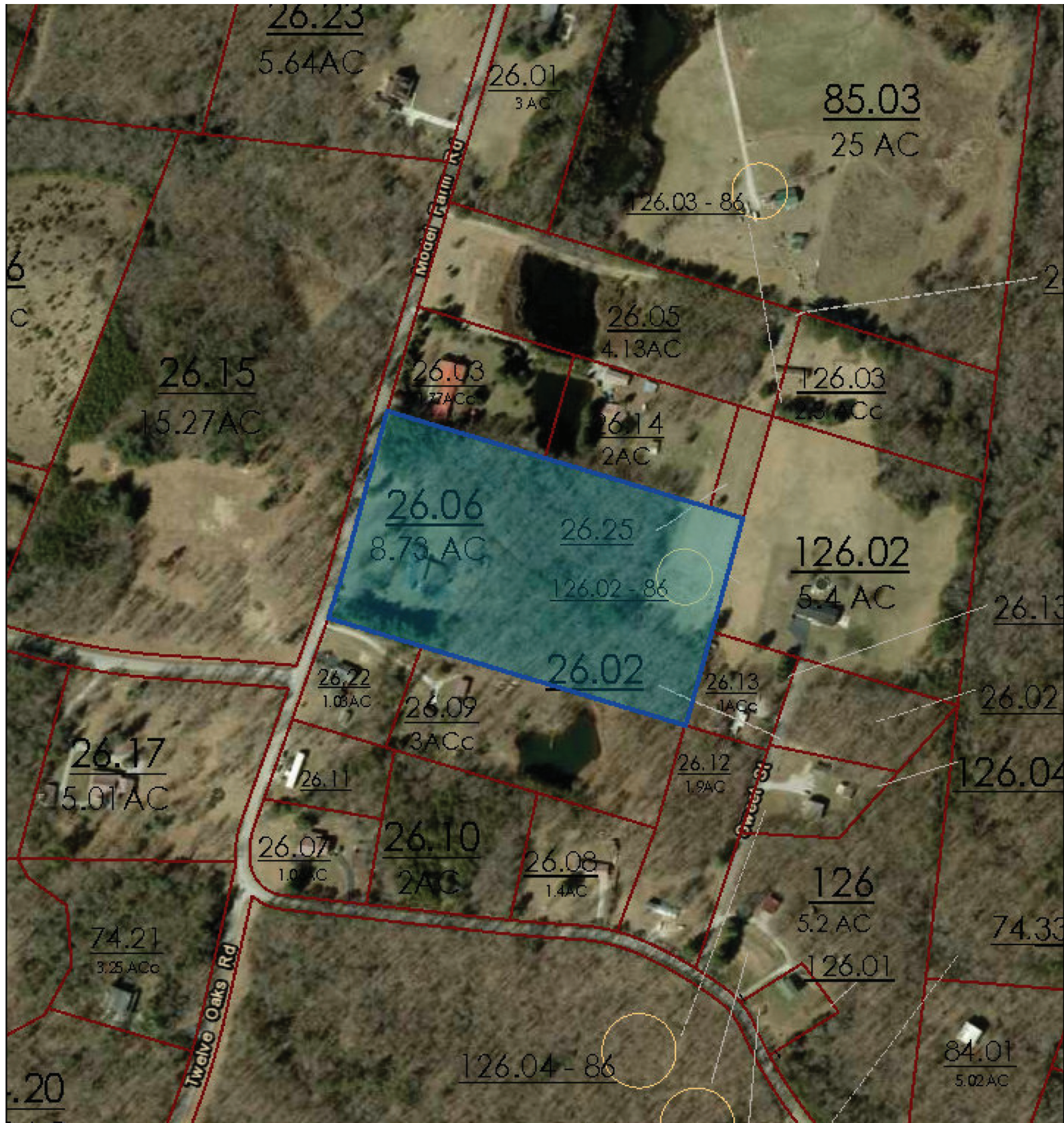
TNF 6105 KY 2965 IN ADU1200022  

[www.eagleauctions.com](http://www.eagleauctions.com)

**Amonett's Eagle Auction where "We Soar Higher"**

# CUSTOM BRICK HOME • 8.73+/- ACRES

1205 Model Farm Rd. • Jamestown, TN



**Amonett's Eagle Auction where "We Soar Higher"**