

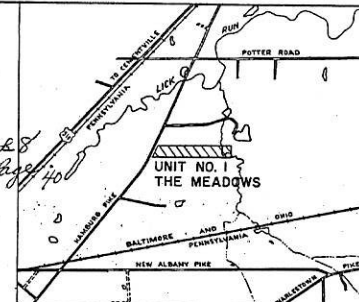
For Sewer Easement see Deed Bk 22 Pgs 48561

# THE MEADOWS SUBDIVISION - UNIT NO. 1

RECEIVED  
FEB 10 1972

DEC 15 11 49 AM '72

Record in Plat Book 8  
Page 40  
CLARK COUNTY  
INDIANA

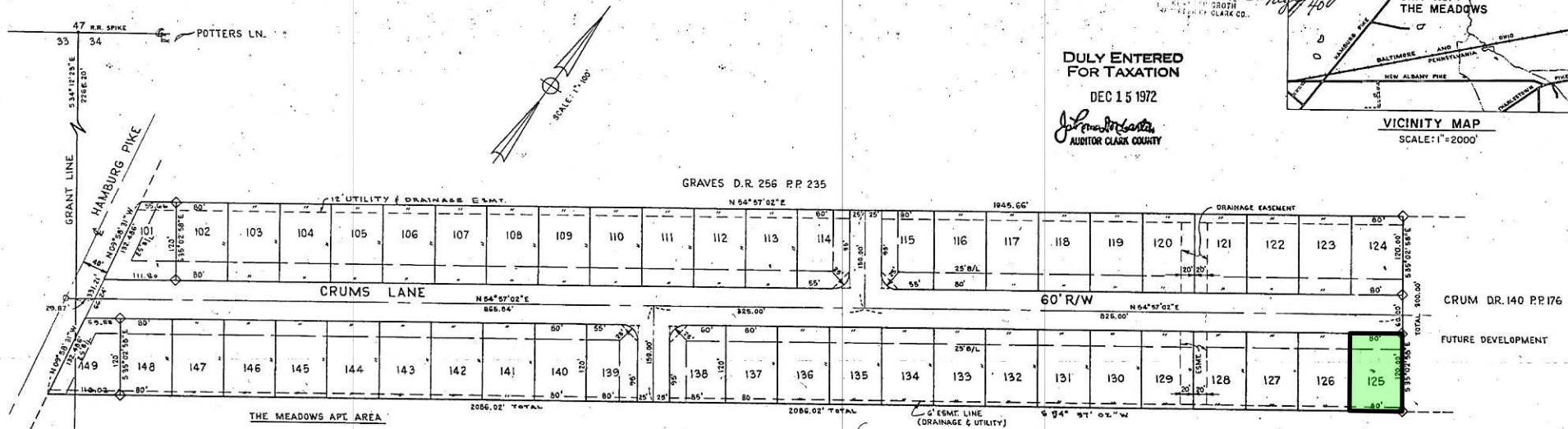


VICINITY MAP  
SCALE: 1"=2000'

DULY ENTERED  
FOR TAXATION

DEC 15 1972

*John M. McLean*  
AUDITOR CLARK COUNTY



### CERTIFICATE OF DEVELOPER AND DEDICATION

THE UNDERSIGNED, **C. G. COMPANY, INC.**, AN INDIANA CORPORATION WITH ITS PRINCIPAL OFFICE AND PLACE OF BUSINESS IN THE CITY OF JEFFERSONVILLE, CLARK COUNTY, INDIANA, BY THIS CERTIFICATE HEREBY CAUSES THE REAL ESTATE HEREIN DESCRIBED TO BE SUBDIVIDED AND PLATTED INTO LOTS AND STREETS AS SHOWN ON THIS PLAT. THE STREETS AND EASEMENTS AS SHOWN ON SAID PLAT ARE HEREBY DEDICATED TO THE PUBLIC USE FOR THE PURPOSES INDICATED THEREIN; AND THE RESTRICTIONS AS RECORDED IN MISCELLANEOUS RECORD NO. 4, PAGE 10881, ARE HEREBY IMPOSED ON EACH AND EVERY LOT WITHIN SAID PLAT AND DECLARED TO BE COVENANTS RUNNING WITH THE LAND. SAID RESTRICTIONS ARE FOR THE BENEFIT OF ALL PERSONS AND CORPORATIONS WHO MAY HEREAFTER HAVE ANY VESTED INTEREST, LEGAL OR EQUITABLE, IN ANY LOT WITHIN SAID PLAT.

IN WITNESS WHEREOF, **C. G. COMPANY, INC.**, INC. HAS CAUSED THIS PLAT TO BE MADE AND THIS CERTIFICATE TO BE EXECUTED FOR AND ON ITS BEHALF BY DANIEL G. CONNER, ITS PRESIDENT, AND ITS CORPORATE SEAL AFFIXED HERETO AND ATTESTED BY MARGARET L. CONNER, ITS SECRETARY, THIS 15 DAY OF DECEMBER 1972.

*Daniel G. Conner*  
C. A. G. COMPANY, INC.  
DANIEL G. CONNER, PRESIDENT

ATTEST:  
*Margaret L. Conner*  
MARGARET L. CONNER, SECRETARY

STATE OF INDIANA  
SS  
COUNTY OF CLARK

BEFORE ME, THE UNDERSIGNED NOTARY PUBLIC IN AND FOR THE COUNTY AND STATE, PERSONALLY APPEARED **DANIEL G. CONNER, MARGARET CONNER, OFFICERS OF C.A.G. COMPANY, INC., CLIFTON CRUM & CLARA D. CRUM**, AND EACH SEPARATELY AND SEVERALLY ACKNOWLEDGED THE EXECUTION OF THE FOREGOING INSTRUMENT AS HIS OR HER VOLUNTARY ACT AND DEED, FOR THE PURPOSES THEREIN EXPRESSED. WITNESS MY HAND AND NOTARIAL SEAL THIS 15 DAY OF DEC, 1972.

*Henry Hasel*  
MY COMMISSION EXPIRES: 10-9-76

### RESTRICTIONS

SUBJECT TO RESTRICTIONS AS RECORDED MISC. RECORD 4 PAGE 10881

### RECORDER

RECEIVED FOR RECORD THIS 15 DAY OF DECEMBER, 1972.  
*Kenneth Luth*  
RECORDER - CLARK COUNTY, INDIANA

### AUDITOR

DULY ENTERED FOR TAXATION THIS 15 DAY OF DECEMBER, 1972.  
*John M. McLean*  
AUDITOR CLARK COUNTY, INDIANA

### CERTIFICATE OF COUNTY PLAN COMMISSION

THIS IS TO CERTIFY THAT THE WITHIN PLAT WAS EXAMINED AND APPROVED BY THE CLARK COUNTY PLAN COMMISSION ON THE 22nd DAY OF MARCH, 1972 IN ACCORDANCE WITH THE PROVISIONS OF AN ORDINANCE ADOPTED DECEMBER 28, 1950, BY THE BOARD OF COUNTY COMMISSIONERS OF CLARK COUNTY, INDIANA, CREATING SAID PLAN COMMISSION, AND AN ORDINANCE OF SAID BOARD OF COUNTY COMMISSIONERS ADOPTED JULY 2, 1951, ENACTING REQUIREMENTS AND PROCEDURES RELATIVE TO THE SUBDIVIDING AND PLATTING OF UNINCORPORATED AREAS WITHIN THE LIMITS OF CLARK COUNTY, INDIANA.

CLARK COUNTY PLAN COMMISSION  
BY *W.P. Hollinger*  
PRESIDENT

### ENGINEERS CERTIFICATE

"I, H. DANIEL LUTHER, HEREBY CERTIFY THAT I AM A REGISTERED LAND SURVEYOR LICENSED IN COMPLIANCE WITH THE LAWS OF THE STATE OF INDIANA, THAT THIS PLAT CORRECTLY REPRESENTS A SURVEY COMPLETED BY ME ON FEBRUARY 14, 1972; THAT ALL THE MONUMENTS SHOWN THEREON ACTUALLY EXIST; AND THAT THE LOCATION, SIZE, TYPE AND MATERIAL ARE ACCURATELY SHOWN.

*H. Daniel Luth*  
2-17-72



◇ INDICATES MONUMENT

### DESCRIPTION

BEING PARTS OF SURVEY NOS. 33 AND 34, OF THE ILLINOIS GRANT, CLARK COUNTY, STATE OF INDIANA, MORE PARTICULARLY DESCRIBED AS FOLLOWS:  
BEGINNING AT THE WESTERLY CORNER OF SAID SURVEY NO. 34 OF THE ILLINOIS GRANT, THENCE WITH THE LINE BETWEEN SURVEY NOS. 33 AND 34 S 31° 12' 23" E 2266.20' TO A POINT, THENCE N 51° 57' 02" E 29.87' TO A POINT, THE TRUE POINT OF BEGINNING, THENCE N 09° 58' 31" W 33.12' TO A POINT BEING THE SOUTHERLY CORNER OF LOT NO. 101, THENCE CONTINUING N 09° 58' 31" W 132.186' TO A POINT, THENCE N 51° 57' 02" E 1915.66' TO A POINT, THENCE S 33° 02' 58" E 200.00' TO A POINT, THENCE S 51° 57' 02" W 2086.02' TO A POINT, THENCE N 09° 58' 31" W 165.60' TO A POINT, THE TRUE POINT OF BEGINNING, CONTAINING 13.8832 ACRES MORE OR LESS.

# CLARK COUNTY, INDIANA

8 X 40