

SOHN
& ASSOCIATES, LTD

12600 N Green River Road
Evansville, IN 47725
(812) 467-0227



SELLER: Estate of Jeffrey Maurice
AUCTIONEER: Doug Emig #AU10700088,
AC#30000226



ONLINE ONLY ESTATE AUCTION FEATURING QUALITY TOOLS, LAWN EQUIPMENT,
COLLECTIBLES W/VINYL LPS, COMIC BOOKS & MUCH MORE!

Bidding Ends: TUESDAY, MARCH 24TH STARTING at 6:00 PM

THIS AUCTION FEATURES A LARGE SELECTION OF TOOLS INCLUDING SNAP-ON, CRAFTSMAN & STANLEY HAND TOOLS; CRAFTSMAN, CAMPBELL HAUSFELD, BLACK & DECKER & CHICAGO ELECTRIC POWER TOOLS; SNAP-ON & CRAFTSMAN TOOL CHESTS; CRAFTSMAN LAWN TRACTOR; TROY-BILT TRIM MOWER; CHICAGO ELECTRIC GENERATOR; LARGE COLLECTION OF VINYL RECORDS 33's & 45's; LARGE COLLECTION OF COMIC BOOKS; VINTAGE ELECTRIC TABLETOP FANS; LIONEL O-GAUGE TRAIN CARS; COCA-COLA COLLECTIBLES; STAR WARS TRADING CARDS; LARGE COLLECTION OF PLAYBOY MAGAZINES; NINTENDO NES & ATARI 2600 VIDEO GAME SYSTEMS; ENGLISH & WESTERN STYLE SADDLES AND MUCH, MUCH MORE!

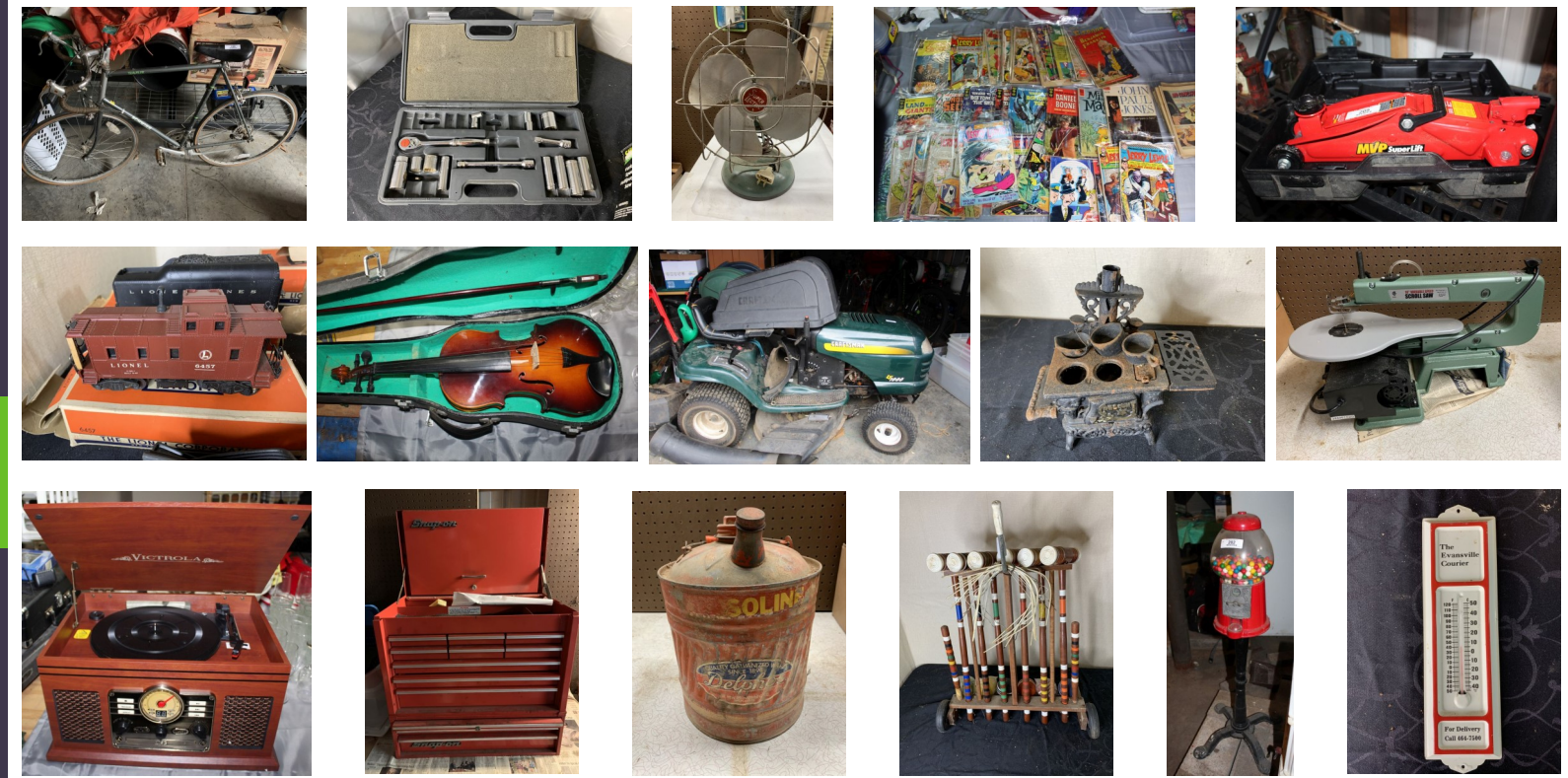
Bidding Link: www.SohnAndAssociates.HiBid.com

Preview: Thursday, March 19th from 3:00 – 6:00 PM - or visit website for pictures!

Auction what you own with Sohn! www.SohnAndAssociates.com 1-800-357-4031

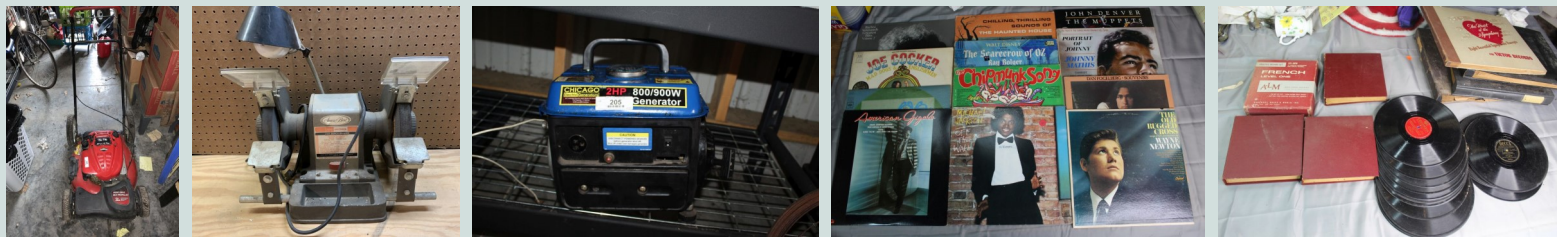
ONLINE ONLY ESTATE AUCTION FEATURING QUALITY TOOLS, LAWN EQUIPMENT,
COLLECTIBLES W/VINYL LPS, COMIC BOOKS & MUCH MORE!

Bidding Ends: TUESDAY, MARCH 24TH STARTING at 6:00 PM

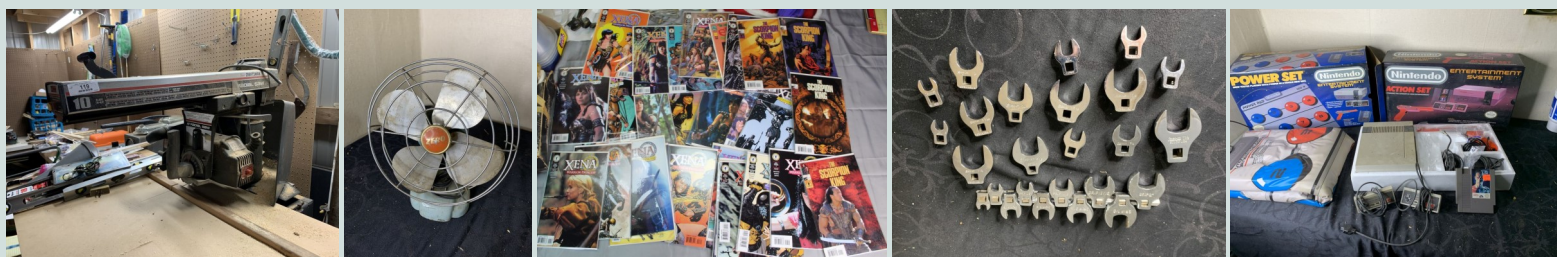


Bidding Link: www.SohnAndAssociates.HiBid.com
Preview: Thursday, March 19th from 3:00 – 6:00 PM - or visit website for pictures!

Location of Preview & Pick-Up: 1510 N St Joseph Avenue in Evansville. From the intersection of Diamond Avenue & St Joseph Avenue head south on St Joseph to auction site on right (Corner of St Joseph Avenue & Ruby Avenue).



Bidding Link: www.SohnAndAssociates.HiBid.com
Preview: Thursday, March 19th from 3:00 – 6:00 PM - or visit website for pictures!



Please visit the bidding link for a complete searchable listing catalog & photos, along with the terms & conditions. Below are just a few of the **HIGHLIGHTS** of this auction:

TOOLS, LAWN EQUIPMENT & MISCELLANEOUS: Large selection of Snap-On tools incl.: Crow Foot wrenches, ratchets, sockets, pliers, insulated nut drivers, screwdrivers & cutters; Craftsman nut driver sets, wrenches, ratchets & sockets; Blue Point hammers & wrenches; additional pliers, ratchets, screwdrivers, wrenches, hammers, pry bars, vice grips, precision tools; Campbell Hausfeld air cut-off tool & portable air compressor; Chicago Electric reciprocating saw & cut-off saw; Sears 10" radial saw; Craftsman bench top drill press; Craftsman 1HP bench grinder; Craftsman 15" 1HP drill press; Schumacher starter/charger; Snap-On multi drawer tool box; Craftsman 5 drawer tool chest; The Chas. Parker Co. vise; several electric milkhouse heaters; Craftsman LT1000 lawn tractor 42" cut w/catcher; Troy-Bilt Tuff Cut 210 trim mower; Chicago Electric 800/900W generator; gas/electric string trimmers; long handled yard/garden tools; asst. work tables/benches & more.

COLLECTIBLES & MISCELLANEOUS: Large collection of vinyl records both 33's & 45's; Lionel O-Gauge train cars & transformer; Nintendo NES-001 video game system w/controllers light gun & power pad; Nintendo NES video games incl.: Super Mario Bros. 2 & 3, Street Fighter 2010; Atari CX-2600A video game system w/controllers & games; large collection of Playboy magazines; Star Wars trading cards; large collection of Marvel/DC comic books incl.: Spiderman, Superman, Justice Batman, Silver Surfer, The Incredible Hulk, Indiana Jones, Xena Warrior Princess, Jerry Lewis, X-Men & many more; selection of vintage Texas Instruments calculators; asst. Coca-Cola collectibles; several vintage tabletop electric fans incl.: Zero, Emerson, Westinghouse & Super Electric; metal Evansville Courier thermometer; Delphos metal gas can; several bicycles incl.: Schwinn Traveler 10-speed, Schwinn Super Sport, Schwinn Boundary & Motobecane; English & Western saddles; stamp collection; sterling

silver flatware-39 pcs; Edison Disc Phonograph S19 upright phonograph & 78 records.

ELECTRONIC & MISCELLANEOUS: Craig stereo w/8-track, turntable & speakers; Realistic DX-300 Communication receiver; Victrola VTA-200B radio/turntable/cd player; Crosley CR8005D-BK portable turntable; Jade 4-Transistor walkie talkies; Konica Autoreflex 35mm camera; GE & Swingmate portable phonographs and much, much more.

Location of Preview & Pick-Up: 1510 N St Joseph Avenue in Evansville. From the intersection of Diamond Avenue & St Joseph Avenue head south on St Joseph to auction site on right (Corner of St Joseph & Ruby Avenue).

Preview: Thursday, March 19th from 3:00 – 6:00 PM - or visit website for pictures!

Pick-Up: Friday, March 27th from 12:00 NOON – 6:00 PM.

Please read all Terms & Conditions online before bidding.

If you have any questions or do not wish to bid online, please call us, and we will be happy to assist!

Terms: 10% Buyers Premium will be added to the final bid price to determine final selling price. ALL PURCHASES MADE BY INDIANA RESIDENTS WILL BE SUBJECT TO INDIANA SALES TAX. SALES TAX WILL BE CHARGED ON THE HAMMER PRICE AND BUYERS PREMIUM. Payment may be made by cash, check or credit card. All items selling AS-IS. For a complete listing of items and auction terms, please visit the bidding link at www.SohnAndAssociates.HiBid.com. If you do not wish to bid online, please call the office to make alternate arrangements.

